

Market Risk Premium and Risk-Free Rate used for 69 countries in 2019: a survey

Pablo Fernandez. Professor of Finance. IESE Business School, fernandezpa@iese.edu
Mar Martinez. Research Assistant. IESE. e-mail: MDMMartinez@iese.edu
Isabel F. Acin. Independent researcher. University of Navarra. ifernandez.28@alumni.unav.es

ABSTRACT

This paper contains the statistics of a survey about the Risk-Free Rate (**RF**) and the Market Risk Premium (**MRP**) used in 2019 for **69 countries**. We got answers for 84 countries, but we only report the results for 69 countries with more than 8 answers.

Due to “Quantitative Easing”, many respondents use for European countries a RF higher than the yield of the 10-year Government bonds. The coefficient of variation (standard deviation / average) of RF is, on average, 2,75 times higher than the CV of MRP for 24 European countries.

For the second time of this survey, 9 respondents provided -without being asked for- a different MRP for Spain and Catalonia (on average, 6,4% for Spain and 11,5% for Catalonia).

1. Market Risk Premium (MRP), Risk Free Rate (RF) and Km [$R_F + MRP$] used in 2019 in 69 countries
2. Distribution of the answers for the US
3. Changes from 2015 to 2017, 2018 and 2019
4. Previous surveys
5. Expected and Required Equity Premium: different concepts
6. Conclusion
 - Exhibit 1. Mail sent on February 2019
 - Exhibit 2. Some comments and webs recommended by respondents

JEL Classification: G12, G31, M21

Keywords: equity premium; required equity premium; expected equity premium; risk-free rate; heterogeneous expectations

March 23, 2019

<https://ssrn.com/abstract=3358901>

xPpLhMjc

1. Market Risk Premium (MRP), Risk Free Rate (RF) and Km [RF + MRP] used in 2019 in 69 countries

We sent a short email (see exhibit 1) on February, 2019 to more 20,000 email addresses of finance and economic professors, analysts and managers of companies obtained from previous correspondence, papers and webs of companies and universities. We asked about the Risk Free Rate (RF) and the Market Risk Premium (MRP) used *“to calculate the required return to equity in different countries”*.

By March 22, 2019, we had received 1,836 emails. 117 persons answered that they do not use MRP for different reasons (see table 1). The remaining emails had specific Risk Free Rates and MRPs used in 2019 for one or more countries.¹ We would like to sincerely thank everyone who took the time to answer us.

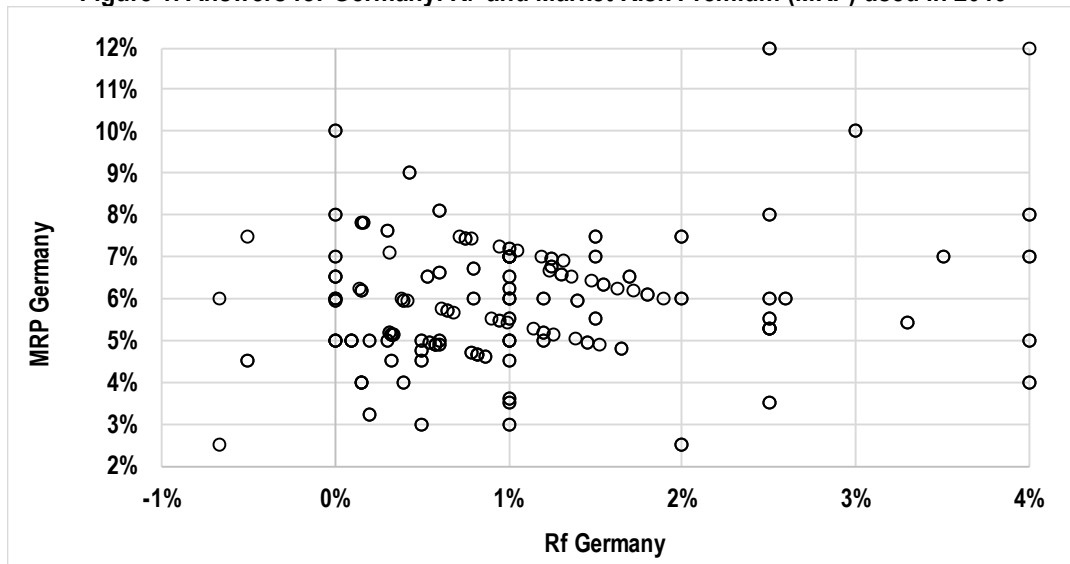
Table 1. MRP and RF used in 2019: 1,836 emails

	Total
Answers reported (MRP figures)	5,096
Outliers	53
Answers for 15 countries with less than 8 answers	46
Only MRP or RF (not both)	29
Answers that do not provide figures	117

Table 2 contains the statistics of the **MRP** used in 2019 for **69 countries**. We got answers for 84 countries, but we only report the results for 69 countries with more than 8 answers. **Table 3** contains the statistics of the Risk-Free Rate (RF) used in 2019 in the 69 countries and **Table 4** contains the statistics of **Km** (required return to equity: $Km = Risk\text{-Free Rate} + MRP$).

Figure 1 is a graphic representation of the answers (MRP and RF) we got for Germany.

Figure 1. Answers for Germany. RF and Market Risk Premium (MRP) used in 2019



¹ We considered 53 of them as outliers because they provided a very small MRP (below 2%)

Table 2. Market Risk Premium (MRP) used for 69 countries in 2019

MRP	Number of Answers	Average	St. Dev.	Median	MAX	min	St.Dev. / Average
USA	1175	5,6%	1,8%	5,5%	17,0%	2,2%	31,9%
Spain	371	6,4%	1,8%	6,4%	12,0%	2,5%	27,7%
Argentina	35	14,9%	2,0%	14,3%	20,0%	12,0%	13,1%
Australia	54	6,5%	1,9%	6,1%	14,0%	3,0%	29,0%
Austria	139	6,1%	1,5%	6,3%	12,0%	3,0%	24,7%
Belgium	145	6,2%	1,5%	6,3%	12,0%	3,0%	24,5%
Bolivia	24	8,8%	2,2%	8,8%	11,3%	6,2%	25,5%
Brazil	58	8,2%	2,2%	8,7%	11,3%	2,0%	26,6%
Bulgaria	28	8,1%	0,8%	8,0%	10,0%	6,0%	9,5%
Canada	60	5,8%	1,4%	5,8%	12,0%	3,1%	24,8%
Chile	42	6,3%	0,8%	6,4%	7,4%	4,0%	12,2%
China	58	7,5%	3,2%	6,9%	17,0%	3,0%	43,1%
Colombia	30	7,7%	1,3%	8,1%	9,1%	4,0%	16,9%
Croatia	27	9,5%	0,7%	9,8%	10,4%	7,8%	7,4%
Czech Republic	32	6,3%	0,6%	6,3%	7,3%	5,4%	9,3%
Denmark	135	6,0%	1,5%	6,0%	12,0%	3,0%	25,3%
Ecuador	26	11,2%	3,6%	8,3%	15,4%	7,5%	31,8%
Egypt	23	13,7%	1,3%	13,3%	15,7%	11,8%	9,4%
Estonia	49	6,0%	2,1%	5,2%	12,0%	3,0%	35,7%
Finland	65	6,2%	1,5%	6,3%	12,0%	3,0%	23,9%
France	175	6,0%	1,6%	6,1%	12,0%	0,6%	27,4%
Germany	239	5,7%	1,7%	5,7%	12,0%	2,5%	29,9%
Greece	30	15,4%	3,8%	15,3%	24,0%	6,0%	24,5%
Hungary	32	7,9%	1,7%	8,5%	9,4%	2,8%	21,8%
Hong Kong	22	6,3%	0,9%	6,3%	9,0%	4,0%	14,4%
India	48	8,3%	2,0%	8,3%	15,0%	5,0%	23,6%
Indonesia	26	9,0%	1,0%	8,9%	13,0%	8,0%	11,0%
Iran	13	11,2%	4,1%	10,6%	19,0%	6,0%	36,7%
Ireland	60	6,0%	1,5%	6,1%	12,0%	3,0%	25,8%
Israel	32	6,4%	0,7%	6,6%	7,3%	5,0%	11,6%
Italy	182	6,3%	1,7%	6,1%	12,0%	2,5%	26,7%
Japan	54	6,1%	1,6%	6,1%	10,0%	3,0%	26,1%
Korea (South)	26	6,6%	0,6%	6,6%	9,0%	5,0%	9,4%
Lebanon	22	11,5%	4,0%	14,6%	15,5%	5,0%	34,4%
Luxembourg	83	6,1%	1,4%	6,2%	12,0%	3,0%	23,6%
Malaysia	19	7,1%	0,6%	7,2%	8,1%	6,1%	8,5%
Mauritius	14	8,7%	1,1%	9,0%	11,0%	6,0%	13,0%
Mexico	72	8,3%	2,6%	7,7%	16,0%	5,3%	30,9%
Montenegro	15	10,4%	2,4%	12,0%	12,6%	6,0%	23,0%
Netherlands	155	6,0%	1,4%	6,0%	12,0%	3,0%	24,0%
New Zealand	32	5,9%	0,4%	5,9%	7,0%	5,3%	6,2%
Nigeria	28	10,9%	3,1%	11,1%	15,3%	4,1%	28,1%
Norway	139	6,0%	1,5%	6,0%	12,0%	3,0%	25,0%
Panama	26	7,8%	0,9%	7,7%	9,0%	5,5%	11,9%
Pakistan	9	12,6%	3,5%	14,8%	15,3%	6,0%	27,9%
Peru	38	7,5%	0,9%	7,6%	10,0%	5,5%	12,5%
Phillipines	24	7,1%	1,6%	7,1%	9,1%	5,0%	22,4%
Poland	42	6,6%	0,8%	6,9%	9,0%	5,0%	12,5%
Portugal	40	7,5%	1,5%	7,7%	9,3%	4,0%	19,9%
Qatar	24	6,8%	0,6%	6,9%	9,0%	5,0%	9,3%
Romania	28	7,7%	1,2%	7,2%	9,4%	5,4%	16,1%
Russia	30	8,5%	1,2%	8,5%	10,1%	5,5%	13,7%
Saudi Arabia	28	7,0%	0,6%	7,1%	9,0%	5,0%	9,1%
Serbia	27	9,6%	1,6%	10,5%	11,4%	6,0%	16,6%

Singapore	21	5,6%	0,7%	5,5%	8,0%	4,8%	12,4%
Slovakia	22	6,6%	0,6%	6,6%	7,5%	5,7%	9,1%
Slovenia	30	7,6%	0,8%	7,6%	9,5%	5,0%	10,6%
South Africa	24	8,4%	0,9%	8,3%	11,0%	6,9%	11,2%
Sri Lanka	20	10,1%	2,2%	10,1%	12,9%	7,3%	21,5%
Sweden	139	6,1%	1,5%	6,1%	12,0%	3,0%	24,8%
Switzerland	150	6,2%	1,5%	6,0%	12,0%	3,0%	24,4%
Taiwan	34	6,1%	1,3%	6,3%	8,0%	3,0%	20,7%
Thailand	26	8,2%	0,7%	8,2%	11,0%	6,7%	9,0%
Turkey	36	9,6%	2,5%	9,4%	15,5%	5,5%	25,6%
Ukraine	26	13,0%	3,3%	10,4%	16,9%	9,5%	25,2%
U. Arab Emirates	28	7,4%	0,8%	7,7%	8,6%	5,9%	10,2%
United Kingdom	86	6,2%	2,3%	6,0%	15,0%	2,3%	37,9%
Uruguay	28	8,4%	0,3%	8,4%	9,0%	7,7%	4,1%
Venezuela	14	23,7%	4,6%	20,4%	30,8%	19,1%	19,4%

Table 3. Risk Free Rate (RF) used for 69 countries in 2019

RF	Number of Answers	Average	St. Dev.	Median	MAX	min	St.Dev. / Average
USA	1175	2,7%	0,9%	2,8%	10,5%	0,0%	31,4%
Spain	371	1,7%	1,3%	1,5%	9,0%	-0,3%	75,4%
Argentina	35	10,1%	2,1%	9,7%	16,0%	7,0%	21,0%
Australia	54	2,8%	0,7%	2,8%	5,0%	1,0%	26,6%
Austria	139	1,3%	1,0%	1,0%	4,0%	0,0%	78,6%
Belgium	145	1,2%	1,0%	1,0%	4,0%	0,0%	82,4%
Bolivia	24	3,0%	0,2%	3,0%	3,4%	2,6%	7,8%
Brazil	58	7,2%	1,8%	7,4%	9,8%	0,8%	25,4%
Bulgaria	28	3,1%	0,6%	3,0%	4,8%	2,0%	19,9%
Canada	60	2,5%	0,5%	2,5%	4,0%	1,7%	20,8%
Chile	42	4,2%	0,9%	4,5%	5,5%	1,5%	21,5%
China	58	4,0%	0,7%	3,8%	6,3%	3,0%	18,4%
Colombia	30	6,2%	1,0%	6,4%	7,3%	3,0%	15,8%
Croatia	27	1,5%	0,3%	1,5%	2,2%	0,7%	22,0%
Czech Republic	32	2,4%	0,7%	2,5%	3,2%	0,3%	27,6%
Denmark	135	1,2%	1,0%	1,0%	4,0%	0,0%	82,1%
Ecuador	26	4,1%	0,6%	4,0%	6,0%	3,4%	15,4%
Egypt	23	10,0%	0,4%	10,0%	10,8%	9,3%	4,1%
Estonia	49	1,4%	1,5%	0,4%	4,0%	0,0%	108,3%
Finland	65	1,1%	0,8%	1,0%	3,5%	0,0%	66,7%
France	175	1,2%	1,0%	1,0%	4,0%	-0,5%	81,2%
Germany	239	1,1%	1,1%	1,0%	5,9%	-0,7%	96,4%
Greece	30	4,3%	1,6%	4,4%	8,0%	0,5%	35,9%
Hungary	32	4,0%	0,7%	4,0%	7,0%	2,8%	17,3%
Hong Kong	22	2,3%	0,5%	2,1%	3,3%	1,7%	22,8%
India	48	6,5%	1,1%	6,6%	9,0%	4,0%	17,5%
Indonesia	26	7,2%	1,0%	7,0%	11,0%	6,0%	13,5%
Iran	13	13,2%	1,6%	13,3%	16,0%	9,0%	12,2%
Ireland	60	1,4%	1,0%	1,4%	4,0%	0,0%	68,1%
Israel	32	2,0%	0,6%	2,1%	3,0%	0,5%	32,7%
Italy	182	1,6%	1,1%	1,5%	4,0%	0,0%	69,8%
Japan	54	1,1%	1,0%	1,0%	4,0%	0,0%	92,6%
Korea (South)	26	2,5%	0,2%	2,5%	2,9%	2,1%	8,7%
Lebanon	22	6,1%	1,5%	5,3%	8,7%	4,5%	24,9%
Luxembourg	83	1,1%	0,9%	0,8%	4,0%	0,0%	81,5%
Malaysia	19	4,3%	0,3%	4,3%	5,0%	3,7%	7,7%

Mauritius	14	5,4%	0,7%	5,0%	6,6%	4,5%	13,3%
Mexico	72	7,1%	1,5%	7,4%	9,0%	2,7%	20,8%
Montenegro	15	3,6%	0,8%	3,3%	5,0%	2,6%	23,1%
Netherlands	155	1,3%	1,0%	1,0%	4,0%	0,0%	76,1%
New Zealand	32	3,0%	0,3%	3,0%	3,5%	2,0%	11,6%
Nigeria	28	25,0%	7,0%	26,1%	31,8%	5,6%	28,0%
Norway	139	1,4%	1,1%	1,3%	4,0%	0,0%	73,9%
Panama	26	4,0%	0,2%	4,0%	4,5%	3,6%	6,2%
Pakistan	9	7,0%	1,7%	6,9%	11,0%	5,0%	23,5%
Peru	38	5,6%	0,8%	5,7%	8,0%	3,8%	14,4%
Phillipines	24	5,3%	0,4%	5,3%	6,5%	4,8%	6,9%
Poland	42	3,1%	0,5%	3,0%	3,9%	1,7%	16,3%
Portugal	40	2,6%	1,2%	2,3%	5,0%	0,0%	48,2%
Qatar	24	3,2%	0,3%	3,1%	3,7%	2,6%	8,9%
Romania	28	4,0%	0,7%	4,1%	5,2%	2,8%	17,7%
Russia	30	8,3%	0,3%	8,3%	9,0%	7,6%	4,1%
Saudi Arabia	28	7,2%	1,6%	7,2%	11,5%	3,2%	22,5%
Serbia	27	4,0%	0,3%	4,0%	4,8%	3,5%	8,6%
Singapore	21	2,6%	0,4%	2,6%	3,2%	1,9%	14,6%
Slovakia	22	2,7%	0,3%	2,8%	3,2%	2,0%	10,3%
Slovenia	30	2,4%	1,3%	1,9%	4,4%	0,2%	53,9%
South Africa	24	8,0%	0,5%	8,1%	8,8%	6,0%	6,7%
Sri Lanka	20	9,2%	0,6%	9,2%	11,0%	8,0%	6,7%
Sweden	139	1,3%	1,0%	1,0%	4,0%	0,0%	76,0%
Switzerland	150	1,1%	1,1%	0,9%	4,0%	-0,8%	97,6%
Taiwan	34	1,8%	0,7%	1,8%	4,0%	0,9%	40,4%
Thailand	26	3,1%	0,6%	3,0%	5,5%	2,6%	18,1%
Turkey	36	11,2%	2,8%	11,0%	16,0%	5,0%	24,6%
Ukraine	26	5,3%	0,4%	5,3%	6,0%	4,5%	7,0%
U. Arab Emirates	28	8,4%	1,7%	8,5%	12,0%	3,9%	19,9%
United Kingdom	86	2,1%	1,0%	2,0%	5,0%	0,5%	46,9%
Uruguay	28	4,4%	0,5%	4,5%	5,2%	3,6%	10,2%
Venezuela	14	12,6%	1,3%	12,4%	15,9%	11,1%	10,0%

Table 4. Km [Required return to equity (market): RF + MRP] used for 69 countries in 2019

Km	Number of Answers	Average	St. Dev.	Median	MAX	min	St.Dev. / Average
USA	1175	8,3%	2,1%	8,0%	24,8%	3,6%	25,1%
Spain	371	8,2%	2,2%	8,2%	16,8%	3,1%	27,5%
Argentina	35	25,0%	3,4%	23,5%	32,0%	19,0%	13,6%
Australia	54	9,2%	2,4%	8,7%	18,0%	5,0%	25,9%
Austria	139	7,4%	1,9%	7,9%	14,5%	3,5%	26,0%
Belgium	145	7,4%	1,9%	7,9%	14,5%	3,5%	25,8%
Bolivia	24	11,8%	2,2%	11,8%	14,0%	9,6%	18,9%
Brazil	58	15,4%	2,3%	15,8%	19,8%	10,0%	15,0%
Bulgaria	28	11,2%	0,9%	11,8%	12,1%	8,0%	8,1%
Canada	60	8,3%	1,3%	8,3%	13,7%	5,9%	15,5%
Chile	42	10,5%	1,3%	10,5%	11,9%	7,5%	12,7%
China	58	11,5%	3,4%	10,8%	22,0%	6,0%	29,7%
Colombia	30	13,9%	2,0%	14,6%	14,6%	7,0%	14,3%
Croatia	27	11,0%	0,9%	11,6%	12,3%	8,5%	7,8%
Czech Republic	32	8,7%	0,8%	8,8%	9,4%	6,3%	9,2%
Denmark	135	7,2%	2,0%	7,9%	14,5%	3,5%	27,1%

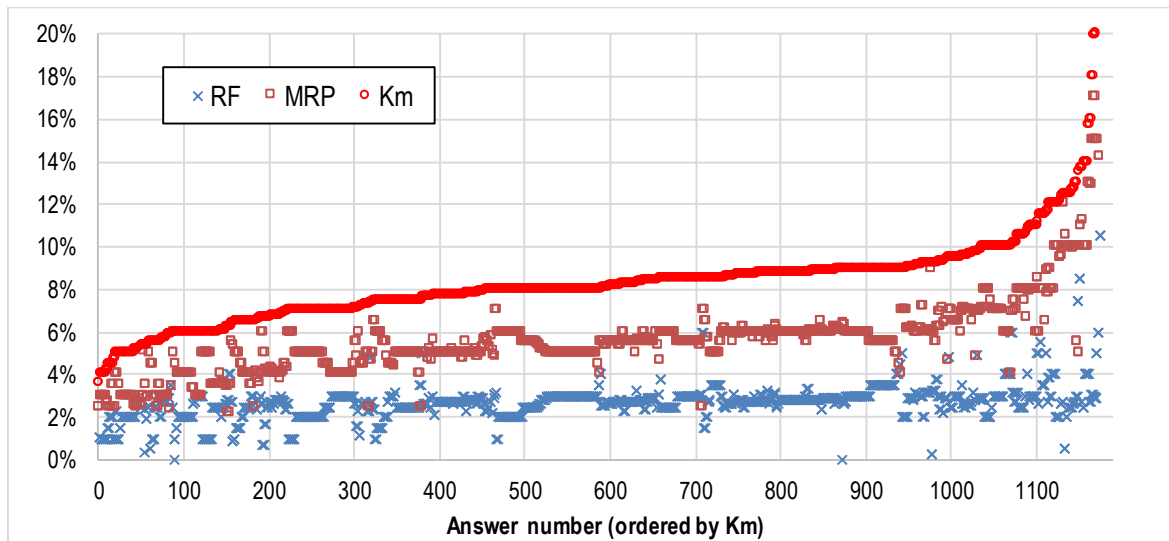
Ecuador	26	15,3%	3,5%	14,0%	19,0%	11,8%	23,2%
Egypt	23	23,7%	1,2%	22,6%	25,0%	22,6%	5,2%
Estonia	49	7,4%	2,7%	6,0%	14,5%	3,5%	37,2%
Finland	65	7,3%	1,8%	7,6%	14,5%	3,5%	24,9%
France	175	7,2%	2,0%	7,8%	14,5%	1,0%	27,9%
Germany	241	6,8%	2,0%	6,5%	14,5%	3,4%	30,0%
Greece	30	19,7%	3,7%	19,0%	26,6%	10,5%	18,5%
Hungary	32	11,8%	1,8%	12,2%	13,0%	5,6%	15,5%
Hong Kong	22	8,6%	0,9%	8,0%	10,7%	7,0%	10,4%
India	48	14,8%	2,7%	14,7%	24,0%	9,0%	18,2%
Indonesia	26	16,2%	1,3%	15,9%	20,8%	15,3%	7,7%
Iran	13	24,4%	3,4%	24,0%	31,0%	19,3%	14,0%
Ireland	60	7,4%	2,1%	7,9%	14,5%	3,5%	28,2%
Israel	32	8,3%	1,1%	8,4%	9,2%	5,5%	13,2%
Italy	182	7,9%	2,2%	8,2%	14,5%	2,9%	27,7%
Japan	54	7,2%	2,2%	6,3%	14,0%	3,3%	30,2%
Korea (South)	26	9,1%	0,7%	9,1%	11,7%	7,1%	7,4%
Lebanon	22	17,6%	3,1%	20,0%	20,0%	10,0%	17,7%
Luxembourg	83	7,2%	1,8%	7,6%	14,5%	3,5%	25,0%
Malaysia	19	11,4%	0,7%	11,7%	12,6%	10,5%	6,0%
Mauritius	14	14,0%	0,6%	14,0%	15,5%	12,3%	4,6%
Mexico	72	15,5%	3,1%	15,0%	24,2%	8,0%	19,8%
Montenegro	15	14,0%	1,6%	15,2%	15,2%	10,6%	11,4%
Netherlands	155	7,3%	1,8%	7,7%	14,5%	3,5%	25,2%
New Zealand	32	8,9%	0,3%	8,9%	9,8%	8,0%	3,8%
Nigeria	28	35,8%	9,6%	35,0%	43,6%	11,9%	26,9%
Norway	139	7,4%	1,9%	8,0%	14,5%	3,5%	26,1%
Panama	26	11,8%	0,9%	11,4%	12,6%	9,7%	7,3%
Pakistan	9	19,7%	3,3%	22,0%	22,0%	12,5%	16,8%
Peru	38	13,1%	1,3%	13,1%	16,0%	10,5%	10,0%
Phillipines	24	12,4%	1,5%	13,1%	13,9%	10,8%	12,5%
Poland	42	9,7%	0,8%	9,8%	12,9%	8,0%	8,6%
Portugal	40	10,1%	2,0%	11,0%	12,1%	4,0%	19,9%
Qatar	24	10,0%	0,6%	10,2%	11,6%	8,0%	5,7%
Romania	28	11,7%	1,1%	11,6%	12,5%	8,2%	9,4%
Russia	30	16,8%	1,1%	16,5%	18,0%	14,0%	6,5%
Saudi Arabia	28	14,3%	1,7%	14,3%	19,0%	9,8%	11,6%
Serbia	27	13,6%	1,8%	15,0%	15,8%	9,5%	12,9%
Singapore	21	8,2%	0,9%	8,0%	11,0%	7,4%	11,1%
Slovakia	22	9,3%	0,5%	9,2%	9,8%	8,9%	5,3%
Slovenia	30	10,1%	1,0%	9,9%	11,5%	7,8%	9,9%
South Africa	24	16,4%	0,7%	16,4%	17,0%	15,7%	4,1%
Sri Lanka	20	19,3%	2,0%	19,7%	21,2%	17,3%	10,2%
Sweden	139	7,4%	2,0%	7,9%	14,5%	3,5%	26,2%
Switzerland	150	7,2%	1,9%	7,5%	14,5%	3,5%	26,7%
Taiwan	34	7,9%	1,7%	7,4%	12,0%	4,0%	21,8%
Thailand	26	11,3%	0,8%	11,3%	13,8%	9,3%	7,5%
Turkey	36	20,8%	3,3%	21,5%	28,0%	12,0%	15,7%
Ukraine	26	18,2%	3,5%	15,5%	21,9%	15,0%	19,1%
U. Arab Emirates	28	15,8%	1,6%	15,8%	20,0%	11,8%	10,0%
United Kingdom	86	8,3%	2,4%	7,9%	20,0%	4,3%	28,8%
Uruguay	28	12,9%	0,3%	12,9%	13,8%	12,6%	2,5%
Venezuela	14	36,3%	5,3%	31,9%	42,9%	31,9%	14,5%

The coefficient of variation ($CV = \text{standard deviation} / \text{average}$) of RF is higher than the CV of MRP for **41** countries.

The coefficient of variation ($CV = \text{standard deviation} / \text{average}$) of Km is lower than the CV of MRP and the CV of RF for **35** countries.

2. Distribution of the answers for the USA

Figure 2. Answers for USA. RF, and Market Risk Premium (MRP) and Km used in 2019



3. Changes from 2015 to 2017, 2018 and 2019

Table 5 compares the results of the 2019 survey with the results of the surveys published in 2015, 2017 and 2018.

Table 5. Market Risk Premium (MRP), Risk Free Rate (RF) and Km (%)
Averages of the surveys of 2018, 2017 and 2015

	Average 2019			Average 2018			Average 2017			Average 2015		
	Km	RF	MRP	Km	RF	MRP	Km	RF	MRP	Km	RF	MRP
USA	8,3	2,7	5,6	8,2	2,8	5,4	8,2	2,5	5,7	7,9	2,4	5,5
Spain	8,2	1,7	6,4	8,8	2,1	6,7	8,8	2,2	6,6	8,1	2,2	5,9
Germany	6,8	1,1	5,7	6,7	1,4	5,3	7,2	1,4	5,7	6,6	1,3	5,3
France	7,2	1,2	6,0	7,4	1,6	5,9	8,3	1,8	6,5	7,2	1,5	5,6
UK	8,3	2,1	6,2	7,5	2,0	5,5	8,1	2,2	5,9	7,2	2,1	5,2
Italy	7,9	1,6	6,3	8,4	2,3	6,1	9,0	2,6	6,4	7,0	1,5	5,4
Canada	8,3	2,5	5,8	8,7	2,9	5,8	9,0	3,0	6,0	8,3	2,3	5,9
Portugal	10,1	2,6	7,5	10,4	3,2	7,2	11,1	3,5	7,6	7,3	1,6	5,7
Switzerland	7,2	1,1	6,2	8,0	1,1	6,9	8,4	1,3	7,1	6,5	1,1	5,4
Belgium	7,4	1,2	6,2	7,8	1,6	6,2	8,1	1,7	6,4	6,7	1,3	5,5
Sweden	7,4	1,3	6,1	8,9	1,8	7,1	8,5	1,7	6,8	6,5	1,1	5,4
Denmark	7,2	1,2	6,0	7,6	1,6	6,0	7,6	1,6	6,1	6,8	1,3	5,5
Finland	7,3	1,1	6,2	7,6	1,7	5,9	7,6	1,7	5,9	6,9	1,2	5,7
Japan	7,2	1,1	6,1	6,0	0,3	5,7	6,3	0,3	6,0	6,6	0,7	5,8
Norway	7,4	1,4	6,0	8,1	2,4	5,7	8,4	2,3	6,1	6,8	1,4	5,5
Brazil	15,4	7,2	8,2	15,7	7,3	8,4	18,0	9,0	9,0	16,5	9,0	7,5
Ireland	7,4	1,4	6,0	8,2	1,6	6,5	8,4	1,7	6,7	6,7	1,3	5,5
China	11,5	4,0	7,5	10,1	3,8	6,3	10,8	3,3	7,5	12,6	4,5	8,1
Mexico	15,5	7,1	8,3	15,3	6,8	8,5	16,0	6,7	9,3	12,2	4,3	8,0
Russia	16,8	8,3	8,5	16,4	7,8	8,7	16,5	8,7	7,7	17,1	7,4	9,7
India	14,8	6,5	8,3	14,7	6,8	7,9	15,0	6,5	8,5	15,8	7,4	8,4
South Africa	16,4	8,0	8,4	14,5	7,6	6,9	15,0	7,5	7,5	15,9	8,2	7,7
Australia	9,2	2,8	6,5	9,7	3,1	6,6	10,3	3,0	7,3	9,2	3,1	6,0
Chile	10,5	4,2	6,3	10,2	4,1	6,1	10,8	4,5	6,2	10,4	3,9	6,5
Uruguay	12,9	4,4	8,4	13,7	5,3	8,3	12,5	4,5	8,0	10,6	3,6	7,1
Poland	9,7	3,1	6,6	9,4	3,4	6,0	9,8	3,4	6,4	7,9	2,7	5,2
Peru	13,1	5,6	7,5	12,6	5,3	7,3	13,0	5,5	7,6	11,2	4,0	7,2
Czech Rep.	8,7	2,4	6,3	8,5	2,6	5,9	8,7	2,5	6,2	7,4	1,8	5,6
Indonesia	16,2	7,2	9,0	15,6	6,8	8,8	16,1	7,2	8,9	16,4	7,5	8,9
Israel	8,3	2,0	6,4	7,7	1,9	5,8	8,4	1,9	6,5	6,1	0,9	5,2
Korea (South)	9,1	2,5	6,6	8,8	2,4	6,4	9,0	2,4	6,6	8,5	2,3	6,2
Netherlands	7,3	1,3	6,0	7,4	1,7	5,8	7,7	1,7	6,0	7,6	1,8	5,9
New Zealand	8,9	3,0	5,9	8,9	3,1	5,8	8,5	2,9	5,6	9,5	2,9	6,6
Thailand	11,3	3,1	8,2	12,3	3,5	8,9	11,2	3,0	8,2	16,0	8,7	7,3
Turkey	20,8	11,2	9,6	18,0	10,3	7,7	18,5	10,5	8,0	17,2	7,8	9,3
Austria	7,4	1,3	6,1	8,2	2,0	6,2	8,0	1,6	6,4	8,4	2,8	5,7
Greece	19,7	4,3	15,4	20,6	4,8	15,8	20,9	4,8	16,2	29,3	15,0	14,3
Colombia	13,9	6,2	7,7	15,4	6,7	8,7	14,1	6,6	7,6	12,1	3,8	8,3
Hungary	11,8	4,0	7,9	11,4	3,6	7,9	12,0	3,6	8,4	9,5	0,6	8,8
Venezuela	36,3	12,6	23,7	28,5	11,7	16,9	28,9	11,5	17,4	23,1	3,5	19,6
Argentina	25,0	10,1	14,9	23,1	9,3	13,9	26,7	10,5	16,3	35,5	12,6	22,9

4. Previous surveys

2008	http://ssrn.com/abstract=1344209
2010	http://ssrn.com/abstract=1606563 ; http://ssrn.com/abstract=1609563
2011	http://ssrn.com/abstract=1822182 ; http://ssrn.com/abstract=1805852
2012	http://ssrn.com/abstract=2084213
2013	http://ssrn.com/abstract=914160
2014	http://ssrn.com/abstract=1609563
2015	https://ssrn.com/abstract=2598104
2016	https://ssrn.com/abstract=2776636
2017	https://ssrn.com/abstract=2954142

2018	https://ssrn.com/abstract=3155709
------	---

Welch (2000) performed two surveys with finance professors in 1997 and 1998, asking them what they thought the Expected MRP would be over the next 30 years. He obtained 226 replies, ranging from 1% to 15%, with an average arithmetic EEP of 7% above T-Bonds.² Welch (2001) presented the results of a survey of 510 finance and economics professors performed in August 2001 and the consensus for the 30-year arithmetic EEP was 5.5%, much lower than just 3 years earlier. In an update published in 2008 Welch reports that the MRP “used in class” in December 2007 by about 400 finance professors was on average 5.89%, and 90% of the professors used equity premiums between 4% and 8.5%.

Johnson et al (2007) report the results of a survey of 116 finance professors in North America done in March 2007: 90% of the professors believed the Expected MRP during the next 30 years to range from 3% to 7%.

Graham and Harvey (2007) indicate that U.S. CFOs reduced their average EEP from 4.65% in September 2000 to 2.93% by September 2006 (st. dev. of the 465 responses = 2.47%). In the 2008 survey, they report an average EEP of 3.80%, ranging from 3.1% to 11.5% at the tenth percentile at each end of the spectrum. They show that average EEP changes through time. Goldman Sachs (O’Neill, Wilson and Masih 2002) conducted a survey of its global clients in July 2002 and the average long-run EEP was 3.9%, with most responses between 3.5% and 4.5%.

Ilmanen (2003) argues that surveys tend to be optimistic: “*survey-based expected returns may tell us more about hoped-for returns than about required returns*”. Damodaran (2008) points out that “*the risk premiums in academic surveys indicate how far removed most academics are from the real world of valuation and corporate finance and how much of their own thinking is framed by the historical risk premiums... The risk premiums that are presented in classroom settings are not only much higher than the risk premiums in practice but also contradict other academic research*”.

Table 4 of Fernandez et al (2011a) shows the evolution of the Market Risk Premium used for the USA in 2011, 2010, 2009 and 2008 according to previous surveys (Fernandez et al, 2009, 2010a and 2010b).

The magazine *Pensions and Investments* (12/1/1998) carried out a survey among professionals working for institutional investors: the average EEP was 3%. Shiller³ publishes and updates an index of investor sentiment since the crash of 1987. While neither survey provides a direct measure of the equity risk premium, they yield a broad measure of where investors or professors expect stock prices to go in the near future. The 2004 survey of the Securities Industry Association (SIA) found that the median EEP of 1500 U.S. investors was about 8.3%. Merrill Lynch surveys more than 300 institutional investors globally in July 2008: the average EEP was 3.5%.

A main difference of this survey with previous ones is that this survey asks about the **Required** MRP, while most surveys are interested in the **Expected** MRP.

5. Expected and Required Equity Premium: different concepts

Fernandez and F. Acín (2015) claim and show that Expected Return and Required Return are two very different concepts. Fernandez (2007, 2009b) claims that the term “equity premium” is used to designate four different concepts:

1. **Historical** equity premium (HEP): historical differential return of the stock market over treasuries.
2. **Expected** equity premium (EEP): expected differential return of the stock market over treasuries.
3. **Required** equity premium (REP): incremental return of a diversified portfolio (the market) over the risk-free rate required by an investor. It is used for calculating the required return to equity.

² At that time, the most recent Ibbotson Associates Yearbook reported an arithmetic HEP versus T-bills of 8.9% (1926–1997).

³ See <http://icf.som.yale.edu/Confidence.Index>

4. **Implied** equity premium (IEP): the required equity premium that arises from assuming that the market price is correct.

The four concepts (HEP, REP, EEP and IEP) designate different realities. The **HEP** is easy to calculate and is equal for all investors, provided they use the same time frame, the same market index, the same risk-free instrument and the same average (arithmetic or geometric). But the **EEP**, the **REP** and the **IEP** may be different for different investors and are not observable.

The **HEP** is the historical average differential return of the market portfolio over the risk-free debt. The most widely cited sources are Ibbotson Associates and Dimson *et al.* (2007).

Numerous papers and books assert or imply that there is a “market” EEP. However, it is obvious that investors and professors do not share “homogeneous expectations” and have different assessments of the **EEP**. As Brealey *et al.* (2005, page 154) affirm, “Do not trust anyone who claims to know what returns investors expect”.

The **REP** is the answer to the following question: What incremental return do I require for investing in a diversified portfolio of shares over the risk-free rate? It is a crucial parameter because the REP is the key to determining the company’s required return to equity and the WACC. Different companies may use, and in fact do use, different **REPs**.

The **IEP** is the implicit REP used in the valuation of a stock (or market index) that matches the current market price. The most widely used model to calculate the IEP is the dividend discount model: the current price per share (P_0) is the present value of expected dividends discounted at the required rate of return (K_e). If d_1 is the dividend per share expected to be received in year 1, and g the expected long term growth rate in dividends per share,

$$P_0 = d_1 / (K_e - g), \text{ which implies: } IEP = d_1 / P_0 + g - R_F \quad (1)$$

The estimates of the IEP depend on the particular assumption made for the expected growth (g). Even if market prices are correct for all investors, there is not an IEP common for all investors: there are many pairs (IEP, g) that accomplish equation (1). Even if equation (1) holds for every investor, there are many *required* returns (as many as expected growths, g) in the market. Many papers in the financial literature report different estimates of the IEP with great dispersion, as for example, Claus and Thomas (2001, IEP = 3%), Harris and Marston (2001, IEP = 7.14%) and Ritter and Warr (2002, IEP = 12% in 1980 and -2% in 1999). There is no a common **IEP** for all investors.

For a particular investor, the **EEP** is not necessary equal to the REP (unless he considers that the market price is equal to the value of the shares). Obviously, an investor will hold a diversified portfolio of shares if his EEP is higher (or equal) than his REP and will not hold it otherwise.

We can find out the REP and the EEP of an investor by asking him, although for many investors the REP is not an explicit parameter but, rather, it is implicit in the price they are prepared to pay for the shares. However, it is not possible to determine the REP for the market as a whole, because it does not exist: even if we knew the REPs of all the investors in the market, it would be meaningless to talk of a REP for the market as a whole. There is a distribution of REPs and we can only say that some percentage of investors have REPs contained in a range. The average of that distribution cannot be interpreted as the REP of the market nor as the REP of a representative investor.

Much confusion arises from not distinguishing among the four concepts that the phrase *equity premium* designates: Historical equity premium, Expected equity premium, Required equity premium and Implied equity premium. 129 of the books reviewed by Fernandez (2009b) identify Expected and Required equity premium and 82 books identify Expected and Historical equity premium.

Finance textbooks should clarify the MRP by incorporating distinguishing definitions of the four different concepts and conveying a clearer message about their sensible magnitudes.

6. Conclusion

Most previous surveys have been interested in the Expected MRP, but this survey asks about the Required MRP.

This paper contains the statistics of a survey about the Risk-Free Rate (**R_F**) and the Market Risk Premium (**MRP**) used in 2019 for **69 countries**. We got answers for 84 countries, but we only report the results for 69 countries with more than 8 answers.

Due to “Quantitative Easing”, many respondents use for European countries a R_F higher than the yield of the 10-year Government bonds. The coefficient of variation (standard deviation / average) of R_F is, on average, 2,75 times higher than the CV of MRP for 24 European countries.

For the second time of this survey, 9 respondents provided -without being asked for- a different MRP for Spain and Catalonia (on average, 6,4% for Spain and 11,5% for Catalonia).

This survey links with the *Equity Premium Puzzle*: Fernandez et al (2009), argue that the equity premium puzzle may be explained by the fact that many market participants (equity investors, investment banks, analysts, companies...) do not use standard theory (such as a standard representative consumer asset pricing model...) for determining their Required Equity Premium, but rather, they use historical data and advice from textbooks and finance professors. Consequently, ex-ante equity premia have been high, market prices have been consistently undervalued, and the ex-post risk premia has been also high. Many investors use historical data and textbook prescriptions to estimate the required and the expected equity premium, the undervaluation and the high ex-post risk premium are self fulfilling prophecies.

EXHIBIT 1. Mail sent on February 2019

Survey Market Risk Premium and Risk-Free Rate 2019

We are doing a **survey** about the **Market Risk Premium** (MRP or Equity Premium) and **Risk-Free Rate** that companies, analysts, regulators and professors use to calculate the **required return on equity** in different countries.

I would be grateful if you would kindly answer the following 2 questions. No companies, individuals or universities will be identified, and only aggregate data will be made public. I will send you the results in a month.

Best regards and thanks,

Pablo Fernandez. Professor of Finance. IESE Business School. Spain.

2 questions:

1. The Market Risk Premium that I am using in 2019

for USA is: _____%

for _____ is: _____%

for _____ is: _____%

2. The Risk-Free rate that I am using in 2019

for USA is: _____%

for _____ is: _____%

for _____ is: _____%

EXHIBIT 2. Some comments and webs recommended by respondents

Equity premium: http://pages.stern.nyu.edu/~adamodar/New_Home_Page/datafile/ctryprem.html

<http://www.market-risk-premia.com/market-risk-premia.html>

<http://www.marktrisikoprämie.de/marktrisikopraemien.html>

US risk free rate: <http://www.treasury.gov/resource-center/data-chart-center/interest-rates/Pages/TextView.aspx?data=yieldYear&year=2015>

risk free rate: <http://www.basiszinssatz.de/basiszinssatz-gemaess-idw.html>

<http://www.econ.yale.edu/~shiller/>

<http://www.cfosurvey.org/pastresults.htm>

<http://alephblog.com/>

Islamic Development Bank works under development mandate and therefore does not follow market based premium on pricing, and uses its internal costs as benchmark. In short, all of our member countries are given financing at the same pricing.

Our commercial bank can invest overnight funds in our excess balance account with the U.S. Federal Reserve Bank at 2.5%. Our overall cost of funds is 0.2%, yielding a spread of 2.3%. Our leverage ratio (equity/assets) is 9.63%. Hence, our pre-tax risk-free rate is 23.88% of equity. Our target is to earn a net interest margin (interest income less interest expense as a percentage of earning assets) of 4.00%, which yields a targeted asset yield of 4.2%, or 43.61% of equity.

Market risk premium = actual equity return - risk free rate

I want to explain the unusually high risk premium I am using in the US market (7%). In my opinion, the way that costs whether they be raw materials, labor, interest etc. process through the economy differently than a simple "add on" cost. I believe that as any cost increase requires a greater capital base to hold inventory or to produce goods and services, that the pass through is not just the actual cost but the cost plus an increment for a return on the greater capital base. Accordingly, the "cost" of money with interest rates so low is more likely than not to be higher in the future. Labor also with unemployment so low is more likely than not to be higher in the future. Therefore although I do not see traditional commodity inflation and labor costs have been unusually stable for this unemployment level, I believe the probability is higher of an increase than a decrease. Thus I have a higher than would be expected market risk premium to address the direction I think the pressures will move on the discount rate. Conversely, If wrong on the upward pressures on capital returns; it would likely be due to slowing global growth and/or trade disruption of longer duration. In that event I again want a higher discount rate to reflect that greater risk potential. Interesting times we live in.

I do not use a MRP or a RF rate for three reasons:

1) I am retired.

- 2) I do not accept their validity.
- 3) The "new normal" makes no economic or financial sense.

I am an academic in a public university – I don't know of any University discount rate.

"The subject who is truly loyal to the Chief Magistrate will neither advise nor submit to arbitrary measures." Junius

Prima de riesgo que utilizo en España: diferencia de rentabilidad que ofrece el bono español respecto al alemán. Tipos de interés sin riesgo: los extraídos día a día del boletín de deuda pública española en operaciones de compra-venta al contado.

I don't value companies on this basis. I prefer to use price to earnings ratio.

In the Netherlands there is a discussion with the fiscal authorities. A lot of valuation experts use the MRP from your Survey. The Fiscal authorities accept that but want consequently also the use of the Rf from your survey. There is a lot of discussion when we use a normalized adjusted Rf.

Por tipo de interés sin riesgo se entiende en el corto plazo, pe 3 meses, al tipo de interés interbancario al plazo correspondiente para el área de referencia. En caso del euro, sería el EURIBOR y en caso de EEUU el Libor USD. Hablando de riesgo soberano USA y Alemania son considerados Benchmarks, por lo que su prima de riesgo es 0 y por tanto se les considera que son libres de riesgo. (Excepto entre ellos cuando se habla de riesgo entre EUR y USD) Por ello, cuando hablamos de prima de riesgo de un país, pe. España, hablamos del diferencial de tipos que hay el bono español con el de Alemania, tomando el mismo plazo. Normalmente se utiliza el plazo estándar del 10 años.

Sigo las recomendaciones de Credit Swiss Global Investment Return Yearbook, en este caso, 2018, con un 3,5% de PRM. No me gustan las recomendaciones de Damodaran, cuando incluye un riesgo país a España mayor que el de, creo, Perú o Ecuador, El tipo de interés sin riesgo que utilizo es, para España, el de el bono alemán a 10 años, según leo es de 0,17%, aunque Credit Swiss, creo recordar utiliza otro...el de EEUU es de 2,73%.

The risk free rate is determined on the historical present value-equivalent base interest rates on the basis of a series of payments increasing with the selected growth rate over a period of 1,000 years. For the calculations, the spot rate from year 30 to year 1,000 is updated constantly based upon the valuation date.

Germany

Risk free rate
Adjustment

0.9%	20 y Bund
1.8%	Credit Suisse
2.7%	

Investing.com/rates-bonds/germany-20-year-bond-yield (1-1-2018)
Credit Suisse Global Investment Source book and Yield book 2016 – Range of estimated long term real rate government bonds 1900-2015 - globally diversified

Risk free rate Adjusted

I don't use the market risk premium. I use a hurdle rate of return and won't invest in investments that don't achieve that hurdle. I aspire to a 25% rate of return on my investments but will generally settle for 15%.

I use the relevant rate from each country/currency "risk-free" yield curve to discount the respective expected future cash flow: $V_0 = CF_1/(1 + Rf_1 + risk\ prem)^1 + CF_2/(1 + Rf_2 + risk\ prem)^2 + \dots + CF_t/(1 + Rf_t + risk\ prem)^t$

The Rf that I am using in 2019 for USA is: 10 year historical average, US Treasuries 20-year notes.

I use the US Equity premium of Damodaran to avoid explanations or justifications to clients.

We only use ROS (Return on Sales).

Rf: 3%, of which 2% is a premium for the risk of manipulation of the interest rate market operated by the ECB with the Quantitative Easing.

Al tener limitación nacional al hacer inversiones, debemos emplear un tipo de interés sin riesgo alto. Al operar en mercados muy consolidados, con pocos operadores y con fuertes barreras de entrada, la prima de riesgo de mercado es muy alta.

En anteriores encuestas intenté ofreceros un tipo orientativo pero estos últimos años, después de la "experimentación" de tipos, de diferentes QE con tipos negativos... sólo tengo una certeza, que ya hemos comentado en muchas ocasiones: es muy difícil, o de dudosa utilidad, establecer un tipo de interés sin riesgo. Porque ¿Es normal que la Deuda Griega pague menos que la Deuda de USA? ¿Emisiones de Deuda del gobierno argentino a periodos larguísimos? ¿Deuda alemana o suiza en tipos negativos?...

Respecto a establecer una tasa que sirva como referencia, mantendría dos premisas: 1) El horizonte de inversión (una Tasa de referencia con el mismo plazo); 2) La seguridad en las estimaciones de los flujos de caja futuros del proyecto o inversión: en caso de menor confianza o duda en las estimaciones, mayor tasa de Descuento
Como norma, siempre tenemos en cuenta que la Renta variable ha sido en periodos muy largos el activo más rentable y, por tanto, a muy largo plazo es el Activo de "Menor riesgo"

Fascinating results. It is always interesting how investors and fund managers interpret the risk free rate of countries who have a negative prevailing long-term bond rate.

I am sure you that you are analysing the data and asking more questions that data can answer. It's time to improve theory! I hope you will advance on it.

In my DCF valuation I use a global perspective of the marginal investor hence a global MRP.

I match rf with currency/inflation of cash flows being discounted and do not rely too much on current interest rates due to imperfections in the market. The MRP is made consistent with the level of interest rate I use in my model $(E(R_m) - R_f)$ end end up with 6%

For equities we use a 10% as a cost of opportunity independently of the level of interest.

Rf: average last 5-year 10 year Treasury

I would like to help you with these two questions, but the problem is that in no any literature sources or analytical reports I met the calculation of Market Risk Premium and Risk Free rate for Uzbekistan.

The risk free rate that I use depends upon the timing of the future cash flows. I refer to the interest rate swap market and the US treasury market for starters. These days, one has to bear in mind currency volatility as that has a bigger effect on PV than market cost-of-capital.

We use the same Market Risk Premium for any country: 5,75% (source: Damodaran). Only Rf changes.

I am happy that you are asking the second question, because it accounts for what I consider to be a historical anomaly in the reply to the first question. I've concluded that the ERP was recently 3-4 percent. But I think US monetary policy (the various "QE" programs) have in the past couple of years distorted the traditional relationship between expected total market returns and the risk free rate. QE has been driving the US Treasury rate down, while the expected total market return has held steady, leading to a larger than usual market risk premium. This higher market risk premium is not a sign of higher market equity risk, but of the perverse impact of aggressive monetary policy.

For the US in 2015: MRP: 14% (as US equities are even more highly priced than last year).

Interest rates are artificially well below historic levels. Thus, bonds and equities values are artificially inflated.

I do not use "canned" rates applicable for a whole year. The rates I use are time-specific and case-specific, depending on conditions prevailing as of the valuation date.

I must confess I am still surprised with the rates suggested that are at the upper bound of respondent answers.

One hint: It might make sense to ask more precisely about the premium before/after personal income tax. For Germany the premium would differ and I am not sure how people would interpret the question.

The Risk-Free Rate we use is based on rates published by the Federal Reserve. We use the 20 year rate, currently 2.73%. The Equity Risk Premium we use is based on Duff & Phelps Annual Valuation Handbook.

For foreign countries, I generally look at it in dollar terms and assume that purchasing power parity held; hence, I'd use US rates. If I had to do it in a foreign currency, I would use the local 10-year treasury for the risk-free rate. I would use the US equity risk premium, adjust for inflation to real terms, and then adjust for foreign inflation to put it in local nominal terms.

USA. MRP 6.4% - essentially bloomberg/ibbotson number. RF 10 year U.S. treasury yield.

Exijo un mínimo de un 15% de retorno neto de impuestos a cualquier acción, independientemente de su nacionalidad.

No existe un activo libre de riesgo en absoluto. Y menos en estos distorsionados entornos debido a la intervención de los bancos centrales. En mi modesta opinión, creo que nunca sido tan riesgosa la renta fija como lo es ahora.

No creo especialmente en el modelo de CAPM y prefiero usar una cifra basada en el sentido común.

En Uruguay la práctica más aceptada es descontar flujos convertidos a USD dada la debilidad de la moneda local y dolarización de la economía.

References

- Brealey, R.A., S.C. Myers and F. Allen (2005), *Principles of Corporate Finance*, 8th edition, McGraw-Hill/Irwin.
- Claus, J.J. and J.K. Thomas (2001), "Equity Premia as Low as Three Percent? Evidence from Analysts' Earnings Forecasts for Domestic and International Stock Markets," *Journal of Finance*. 55, (5), pp. 1629-66.
- Damodaran, A. (2008), "Equity Risk Premiums (ERP): Determinants, Estimation and Implications", Working Paper.
- Dimson, E., P. Marsh and M. Staunton (2007), "The Worldwide Equity Premium: A Smaller Puzzle," in *Handbook of investments: Equity risk premium*, R. Mehra, Elsevier.
- Fernandez, P. (2007), "Equity Premium: Historical, Expected, Required and Implied", <http://ssrn.com/abstract=933070>
- Fernandez, P. (2009a), "Market Risk Premium Used in 2008 by Professors: A Survey with 1,400 Answers", <http://ssrn.com/abstract=1344209>
- Fernandez, P. (2009b), "The Equity Premium in 150 Textbooks", <http://ssrn.com/abstract=1473225>
- Fernandez, P., J. Aguirreamalloa and H. Liechtenstein (2009), "The Equity Premium Puzzle: High Required Premium, Undervaluation and Self Fulfilling Prophecy". IESE Business School WP. <http://ssrn.com/abstract=1274816>
- Fernandez, P. and J. del Campo (2010a), "Market Risk Premium used in 2010 by Analysts and Companies: a survey with 2,400 answers", downloadable in <http://ssrn.com/abstract=1609563>
- Fernandez, P. and J. del Campo (2010b), "Market Risk Premium Used in 2010 by Professors: A Survey with 1,500 Answers", downloadable in <http://ssrn.com/abstract=1606563>
- Fernandez, P., J. Aguirreamalloa and L. Corres (2011a), "US Market Risk Premium Used in 2011 by Professors, Analysts and Companies: A Survey with 5.731 Answers", downloadable in <http://ssrn.com/abstract=1805852>
- Fernandez, P., J. Aguirreamalloa and L. Corres (2011b), "The Equity Premium in Spain: Survey 2011 (in Spanish)", downloadable in <http://ssrn.com/abstract=1822422>
- Fernandez, P., J. Aguirreamalloa and L. Corres (2011c), "Market Risk Premium Used in 56 Countries in 2011: A Survey with 6,014 Answers", downloadable in <http://ssrn.com/abstract=1822182>
- Fernandez, P., J. Aguirreamalloa and P. Linares (2014), "Market Risk Premium and Risk Free Rate Used for 51 Countries in 2013: A Survey with 6,237 Answers", downloadable in <http://ssrn.com/abstract=914160>
- Fernandez, P., J. Aguirreamalloa and L. Corres (2012), "Market Risk Premium Used in 82 Countries in 2012: A Survey with 7,192 Answers", downloadable in <http://ssrn.com/abstract=2084213>
- Fernandez, P. and I. F. Acín (2015), "Expected and Required Returns: Very Different Concepts", downloadable in <http://ssrn.com/abstract=2591319>
- Fernandez, P., P. Linares and I. F. Acín (2014), "Market Risk Premium Used in 88 Countries in 2014: A Survey with 8,228 Answers", downloadable in <http://ssrn.com/abstract=2450452>
- Fernandez, P., A. Ortiz and I. F. Acín (2015), "Discount Rate (Risk-Free Rate and Market Risk Premium) Used for 41 Countries in 2015: A Survey", Available at: <https://ssrn.com/abstract=2598104>
- Fernandez, P., A. Ortiz and I. F. Acín (2016), "Market Risk Premium Used in 71 Countries in 2016: A Survey with 6,932 Answers", Available at: <https://ssrn.com/abstract=2776636>
- Fernandez, P., V. Pershin and I.F. Acín (2017), "Discount Rate (Risk-Free Rate and Market Risk Premium) Used for 41 Countries in 2017: A Survey", Available at: <https://ssrn.com/abstract=2954142>
- Graham, J.R. and C.R. Harvey (2007), "The Equity Risk Premium in January 2007: Evidence from the Global CFO Outlook Survey," *Icfai Journal of Financial Risk Management*, Vol. IV, No. 2, pp. 46-61.
- Harris, R.S. and F.C. Marston (2001), "The Market Risk Premium: Expectational Estimates Using Analysts' Forecasts," *Journal of Applied Finance*, Vol. 11.
- Ilmanen, A. (2003), "Expected returns on stocks and bonds", *Journal of Portfolio Management* 29, pp. 7-27.
- Johnson, D. T., T. Kochanek, T and J. Alexander (2007), "The Equity Premium Puzzle: A New Look", *Journal of the Academy of Finance*, Vol. 5, No. 1, pp. 61-71.
- O'Neill, J., D. Wilson and R. Masih (2002), "The Equity Risk Premium from an Economics Perspective", Goldman Sachs, Global Economics Paper No. 84.
- Ritter, J.R. and R. Warr (2002), "The Decline of Inflation and the Bull Market of 1982 to 1999," *Journal of Financial and Quantitative Analysis*, Vol. 37, No. 1, pp. 29-61.
- Welch, I. (2000), "Views of Financial Economists on the Equity Premium and on Professional Controversies", *Journal of Business*, Vol. 73, No. 4, pp. 501-537.
- Welch, I. (2001), "The Equity Premium Consensus Forecast Revisited", Cowles Foundation Discussion Paper No. 1325.
- Welch, I. (2007), "A Different Way to Estimate the Equity Premium (for CAPM and One-Factor Model Use Only)," SSRN n. 1077876.