

Puget Sound Power & Light Company
Docket No. UE-920499
Response to Bench Request #3

Request

Provide an interpretation of the graphs illustrating the residential rate impacts in Exhibit 14.

Response by Mr. Hoff

The graph on the top of page 2 of Exhibit 14 illustrates that no residential customers will receive a bill increase of more than five percent. However, approximately 62 percent of the residential customers will receive a bill increase of less than five percent. The remaining customers will receive rate a bill decrease from 0 - 10 percent.

The graph on the bottom of page 2 Exhibit 14 attempts to illustrate what types of residential customers will receive the rate increase and what their monthly bills are. The curved lines marked with boxes shows the percent change in summer and winter bills. (The empty boxes are winter bills.) These lines indicate that customers with monthly consumption below 700 kWh will receive a bill decrease. Customers with monthly bills above 700 kWh will receive increases up to five percent. No customers with consumption between 700 - 3000 kWh will receive a bill increase over five percent.

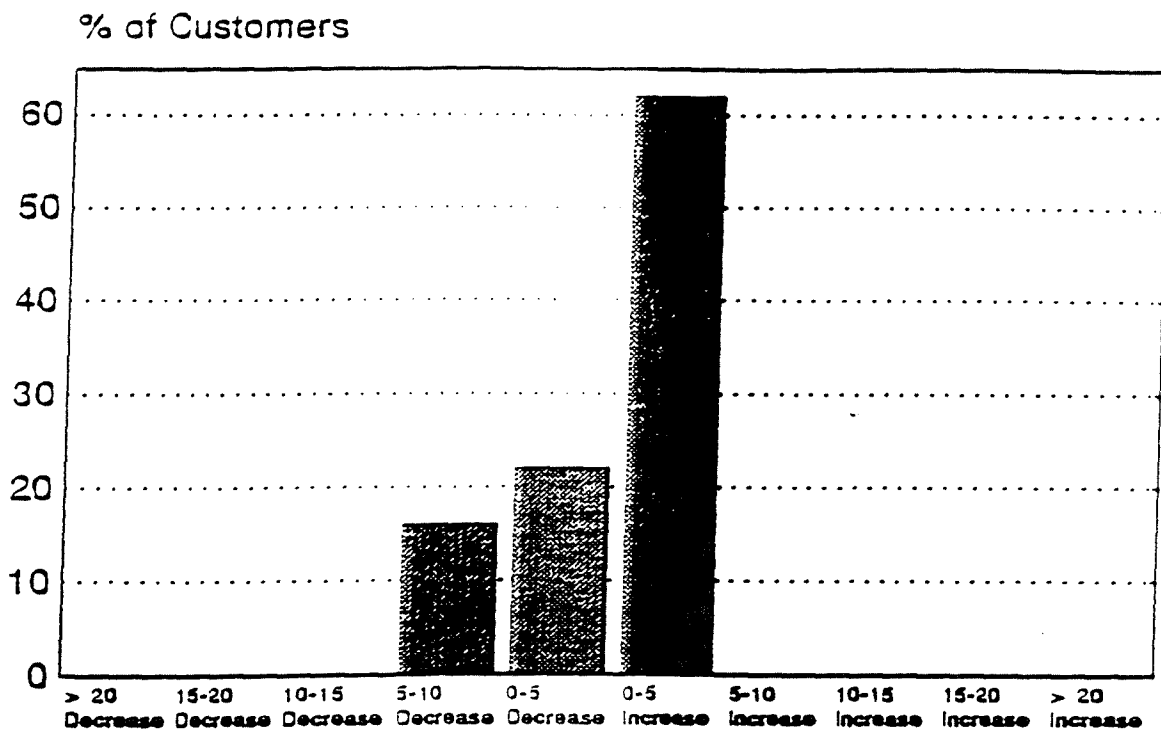
The second set of lines on the graph shown on the bottom of page 2 indicate the monthly summer and winter bills (with PRAM 1). The lines, marked with diamonds, are read with scale on the left side of the graph.

The two sets of lines can be used to examine the impact on a residential customer. For example, a lights and appliance customer using 600 kWh/month in the winter will receive a 3% bill decrease (looking at the line with empty boxes using the scale on the right side.) The customer's winter bill will be approximately \$30/month (looking at the line with empty diamonds using the scale on the left side.)

WASHINGTON UTILITIES AND TRANSPORTATION COMMISSION	
UE-920433;-920499;	
No. 921262	Ex. 28 ✓

Schedule 7 Impacts

Percent Change In Bills



Impacts Of Proposed Residential Rate

