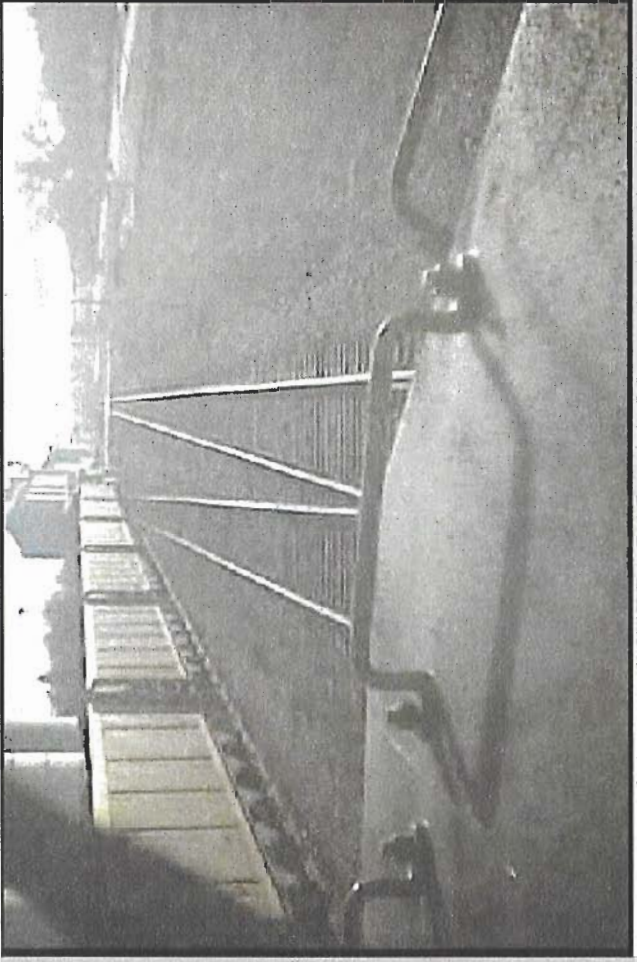


Docket TR-070646
EX. 4 (mm-3A)

LocoCam Viewer-V 7.0 24th January GE Transportation Systems

File View Export Options Help

Session Details
Current File: 4_45F96255_BRUSH_CO.VAM GMT: 2007/03/15 15:12:28 Wheel Diameter: N/A
Roadft: BNSF # 7733 AKST: 2007/03/15 06:12:28



Video Length: 00:00:24 GPS Lat: 40-15:14.00
Position: 00:00:07 GPS Lon: -103:37:34

Monitor Parameters (00000021.ini):
Horn: Off
Belt: On
Speed: 57 mph
Reverser Position: Forward
Power Cutoff Switch: Closed

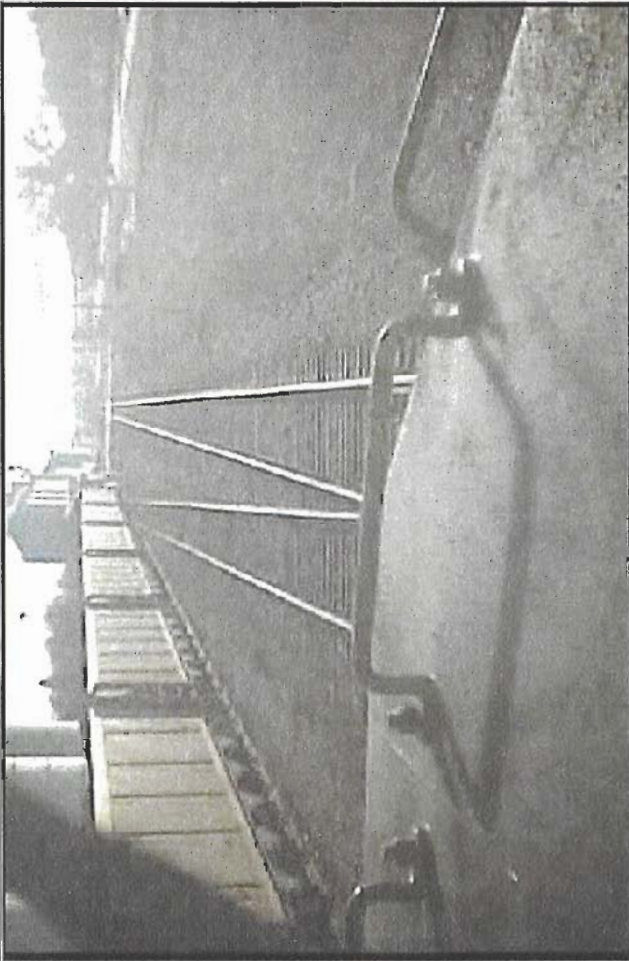
Office Microsoft

Docket TR-070646
EX. 4 (mm-3A)

LocoCam Viewer-V 7.0 24th January GE Transportation Systems Microsoft

File View Export Options Help

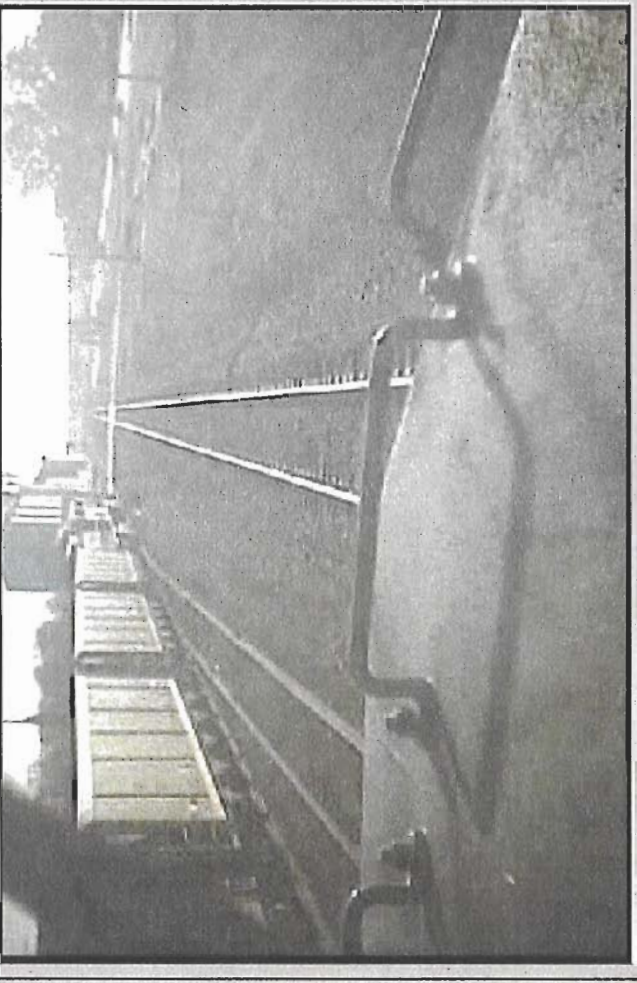
Session Details
Current File: 4_45F96255_BRUSH_CO.VAM GMT: 2007/03/15, 15:12:28 WheelDiameter: N/A
Road#: BNSF # 7733 AKST: 2007/03/15, 06:12:28



Video Length: 00:00:24 GPS Lat: 40:15:14 Position: 00:00:07 GPS Lon: -103:37:34

Monitor Parameters (00000021.ini):
Horn: Off
Bell: On
Speed: 57 mph
Reverser Position: Forward
Power Cutoff Switch: Closed

Session Details
 Current File: 4_45F96255_BRUSH_CO.VAM GMT: 2007/03/15, 15:12:30 Wheel Diameter: N/A
 Road#: BNSF # 7733 AKST: 2007/03/15, 06:12:30



[Play] [Pause] [Stop] [Previous] [Next] [Full Screen] [Refresh] [Volume] [Video Length: 00:00:24] [GPS Lat: 40:15:14] [GPS Lon: -103:37:32]
 [Position: 00:00:09]

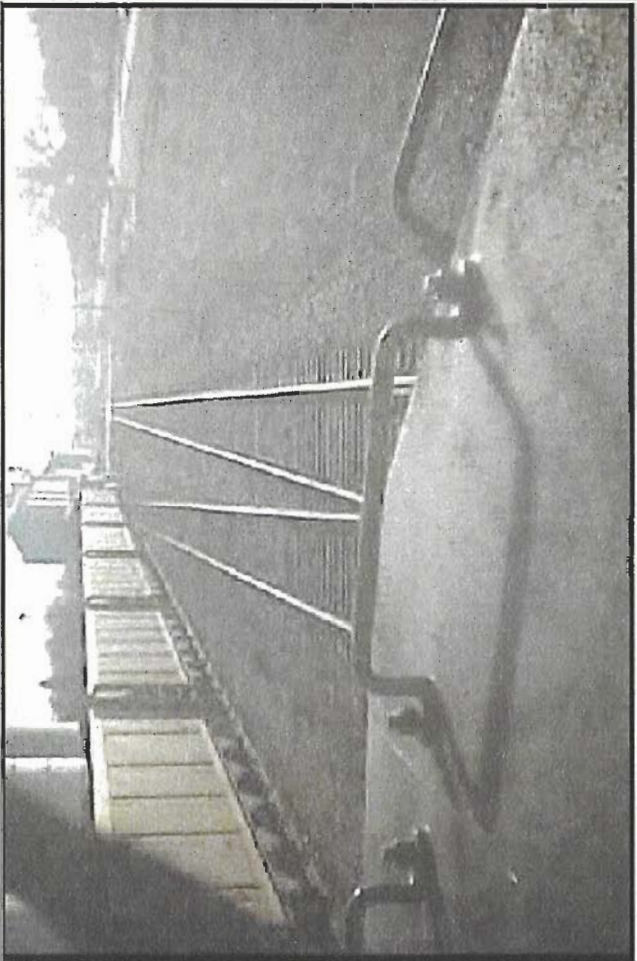
Monitor Parameters [00000021.mi]:
 Horn: On
 Bell: On
 Speed: 57 mph
 Reverser Position: Forward
 Power Cutoff Switch: Closed

Docket TR-070646
EX. 4 (mm-3A)

LocoCam Viewer-V 7.0 24th January GE Transportation Systems

File View Export Options Help

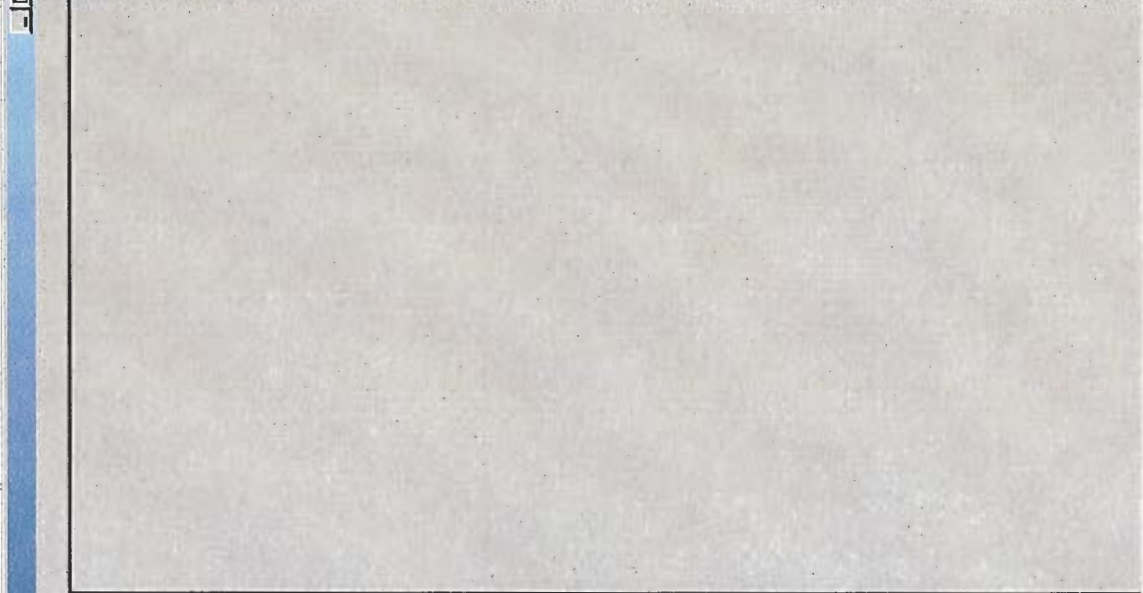
Session Details
Current File: 4_45F96255_BRUSH_CO.VAM GMT: 2007/03/15, 15:12:28 Wheel Diameter: N/A
Road#: BNSF # 7733 AKST: 2007/03/15, 06:12:28



Video Length: 00:00:24 GPS Lat: 40:15:14.00
Position: 00:00:07 GPS Lon: -103:37:34

Monitor Parameters (00000021.mil):
Horn: Off
Belt: On
Speed: 57 mph
Reverser Position: Forward
Power Cutoff Switch: Closed

Office Microsoft



File View Export Options Help

Session Details

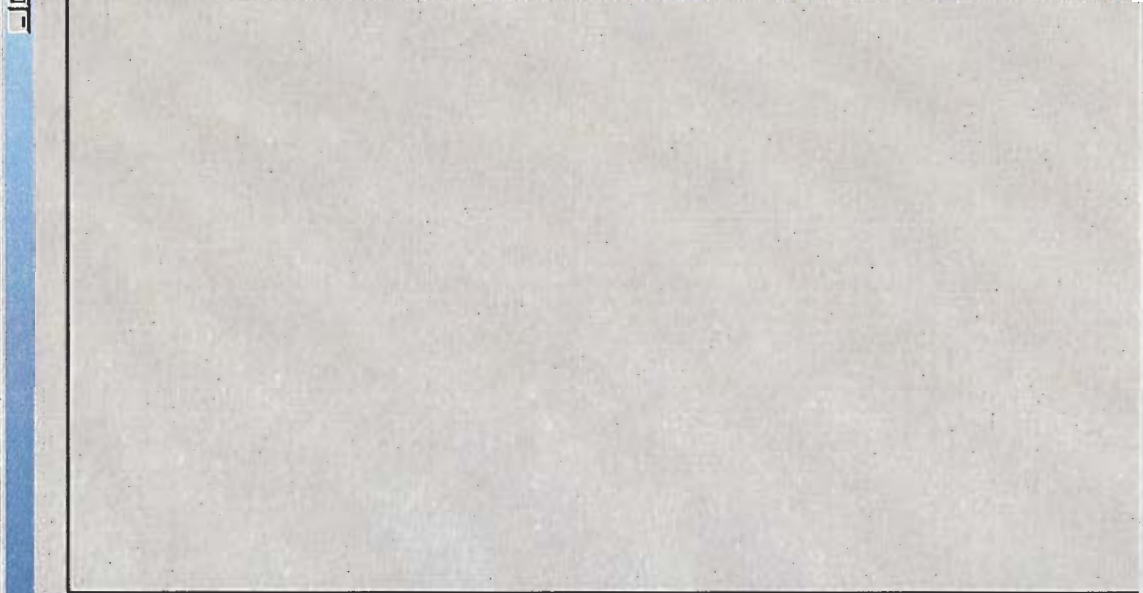
Current File: 4_45F96255_BRUSH_CO.VAM GMT: 2007/03/15, 15:12:30 WheelDiameter: N/A
Road#: BNSF # 7733 AKST: 2007/03/15, 06:12:30



Video Length: 00:00:24 GPS Lat: 40:15:14
Position: 00:00:09 GPS Lon: -103:37:32

Monitor Parameters (00000021.iml):

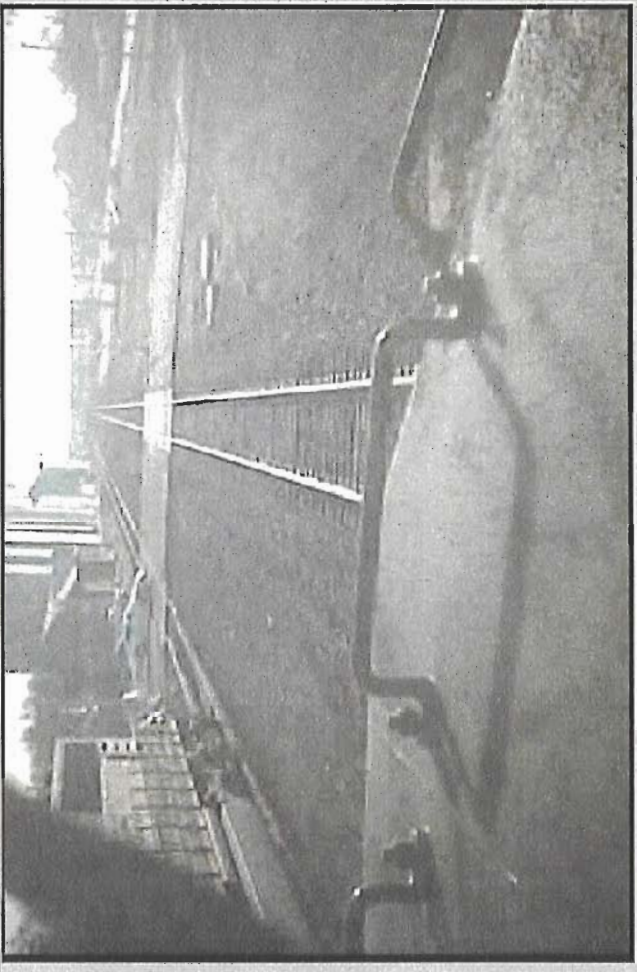
Horn: On
Belt: On
Speed: 57 mph
Reverser Position: Forward
Power Cutoff Switch: Closed



File View Export Options Help

Session Details

Current File: 4_45F96261_BRUSH_CO.VAM GMT: 2007/03/15, 15:12:33 WheelDiameter: N/A
Road#: BNSF # 7733 AKST: 2007/03/15, 08:12:33

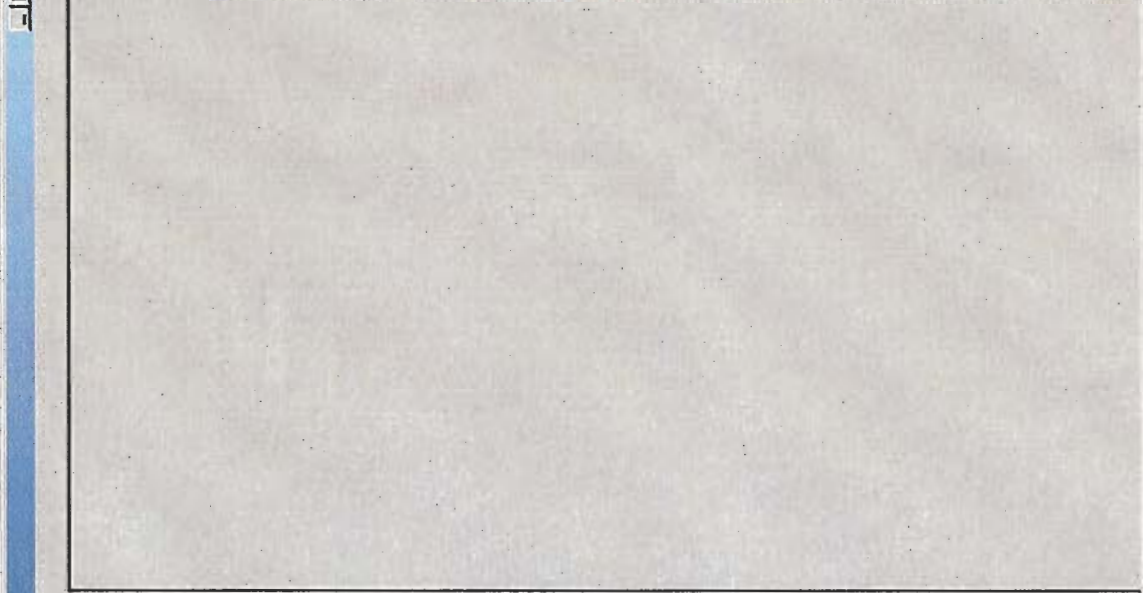


Video Length: 00:00:24 GPS Lat: 40.15:14.00
Position: 00:00:12 GPS Lon: -103:37:29

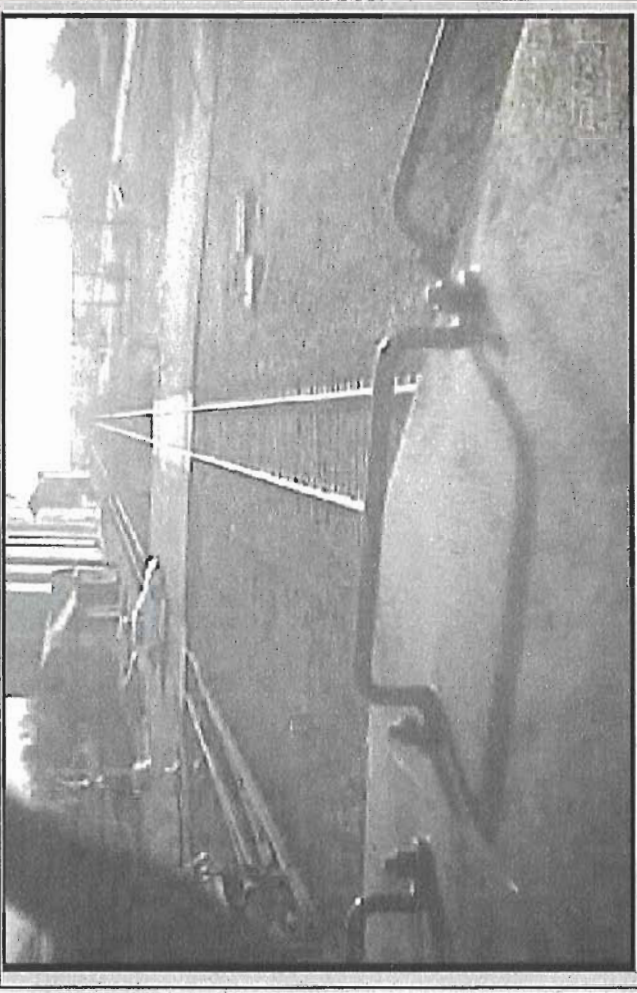


Monitor Parameters (000000021.imi)

Horn: On
Belt: On
Speed: 57 mph
Reverser Position: Forward
Power Cutoff Switch: Closed

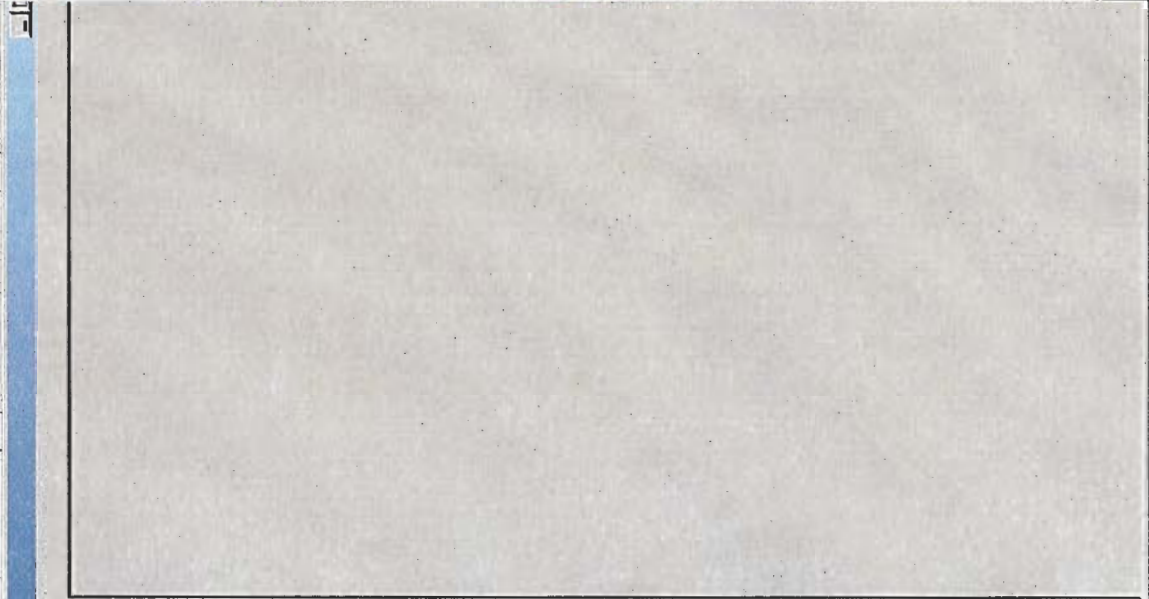


File View Export Options Help
Session Details
Current File: 4_45F96261_BRUSH_CO.VAM GMT: 2007/03/15, 15:12:34 WheelDiameter: N/A
Road#: BNSF # 7733 AKST: 2007/03/15, 06:12:34



Video Length: 00:00:24 GPS Lat: 40:15:14
Position: 00:00:13 GPS Lon: -103:37:26

Monitor Parameters (000000021.in):
Horn: On
Belt: On
Speed: 57 mph
Reverser Position: Forward
Power Cutoff Switch: Closed



File View Export Options Help

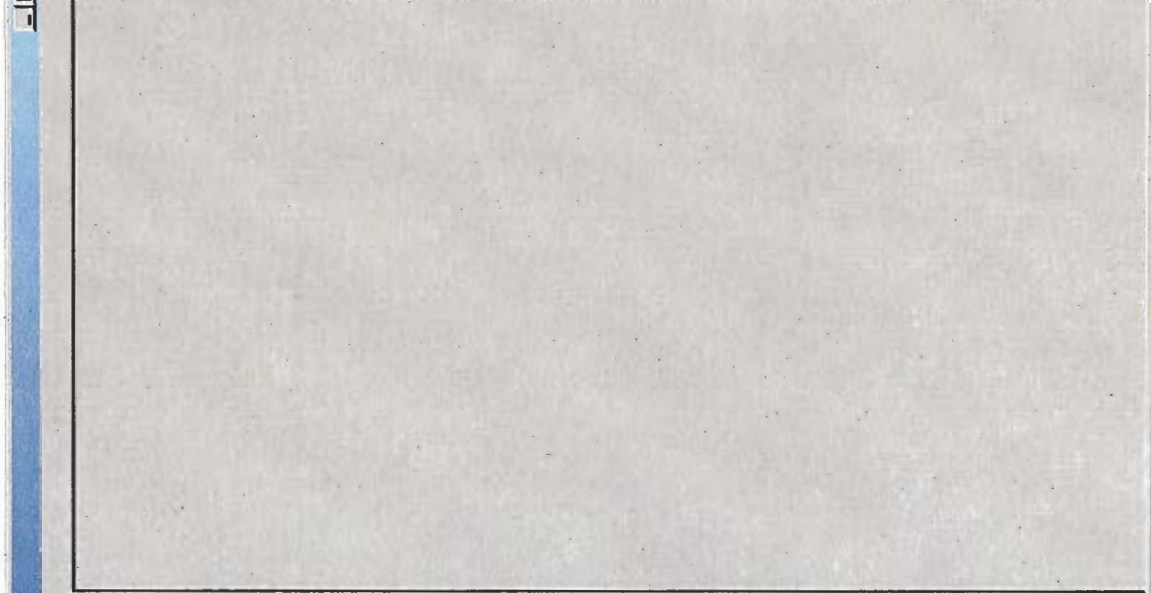
Session Details
Current File: 4_45F96261_BRUSH_CO.VAM GMT: 2007/03/15, 15:12:34 WheelDiameter: N/A
Road#: BNSF # 7733 AKST: 2007/03/15, 06:12:34



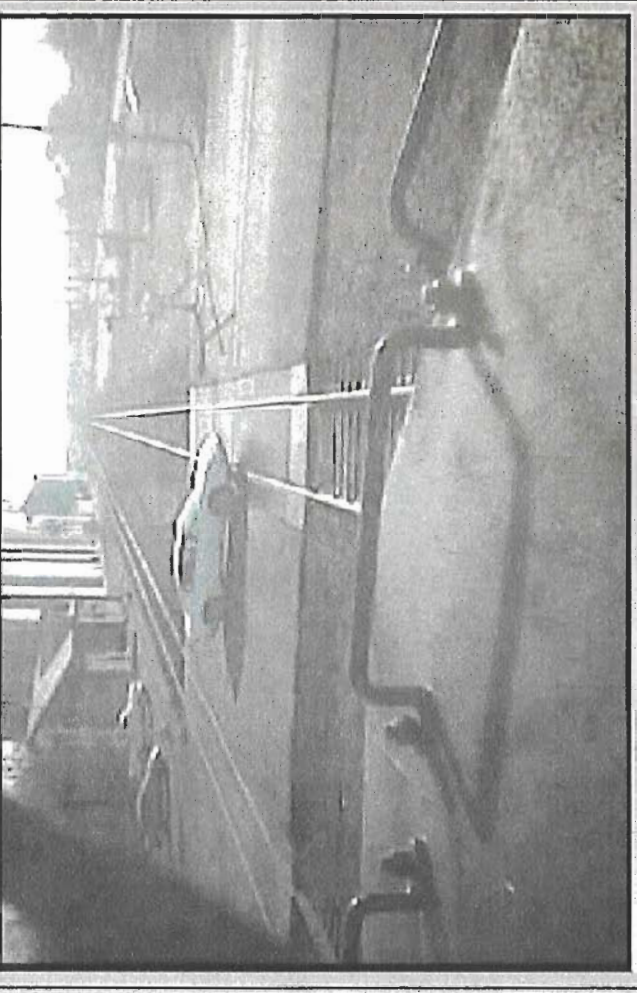
Video Length: 00:00:24 GPS Lat: 40-15:14.0
Position: 00:00:13 GPS Lon: -103:37:26

Monitor Parameters 100000021.inil

- Horn: On
- Belt: On
- Speed: 57 mph
- Reverse Position: Forward
- Power Cutoff Switch: Closed



File View Export Options Help
Session Details
Current File: 4_45f96261_BRUSH_CO.VAM GMT: 2007/03/15, 15:12:35 WheelDiameter: N/A
Road#: BNSF # 7733 AKST: 2007/03/15, 06:12:35



Video Length: 00:00:24 GPS Lat: 40:15:14
Position: 00:00:14 GPS Lon: -103:37:25


Monitor Parameters (000000021.iml):
Horn: On
Belt: On
Speed: 57 mph
Reverse Position: Forward
Power Cutoff Switch: Closed

Docket TR-070696
Exhibit 4 (MM 3-B)

LocoCam Viewer-V 7.0 24th January GE Transportation Systems

File View Export Options Help

Session Details
Current File: 44D12544_080205_DEVORE_CA_GMT: 2005/08/02, 17:04:27 Wheel Diameter: 39.00
Road#: BNSF # 4690 AKST: 2005/08/02, 08:04:27



Video Length: 00:00:36 GPS Lat: 34.13.03 Position: 00:00:07 GPS Lon: -117.24.12

Monitor Parameters (00000004.inl):
Horn: Horn Off
Bell: Bell On
Speed: 31mph
Reverse: Position: Center
Power Cutoff: Switch: Closed

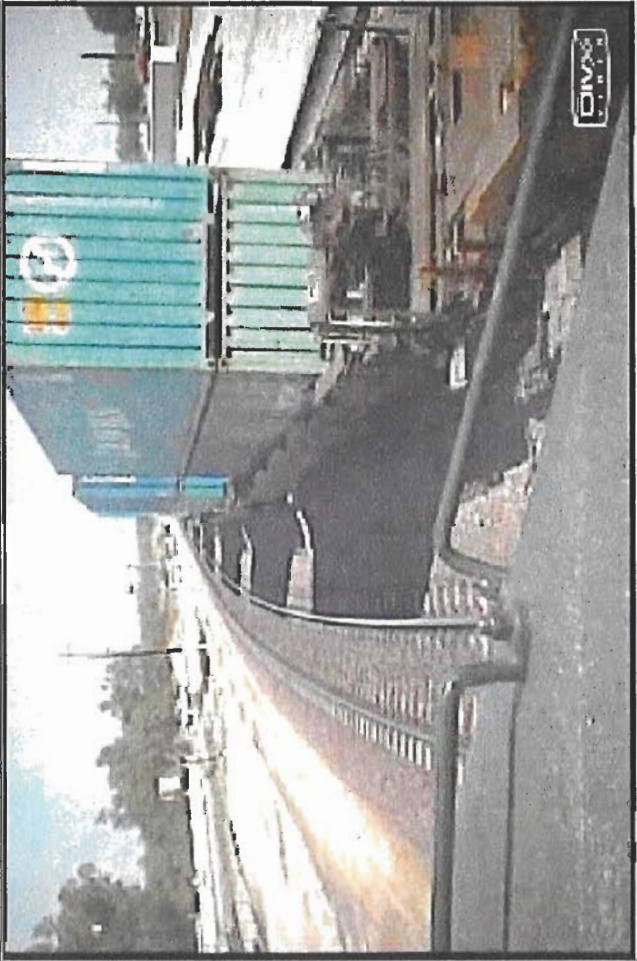
Microsoft Office



File View Export Options Help

Session Details

Current File: 44D12544_080206_DEVORE_CA_GMT: 2006/08/02, 17:04:29 WheelDiameter: 39.00
RoadID: BNSF # 4690 AKST: 2006/08/02, 08:04:29

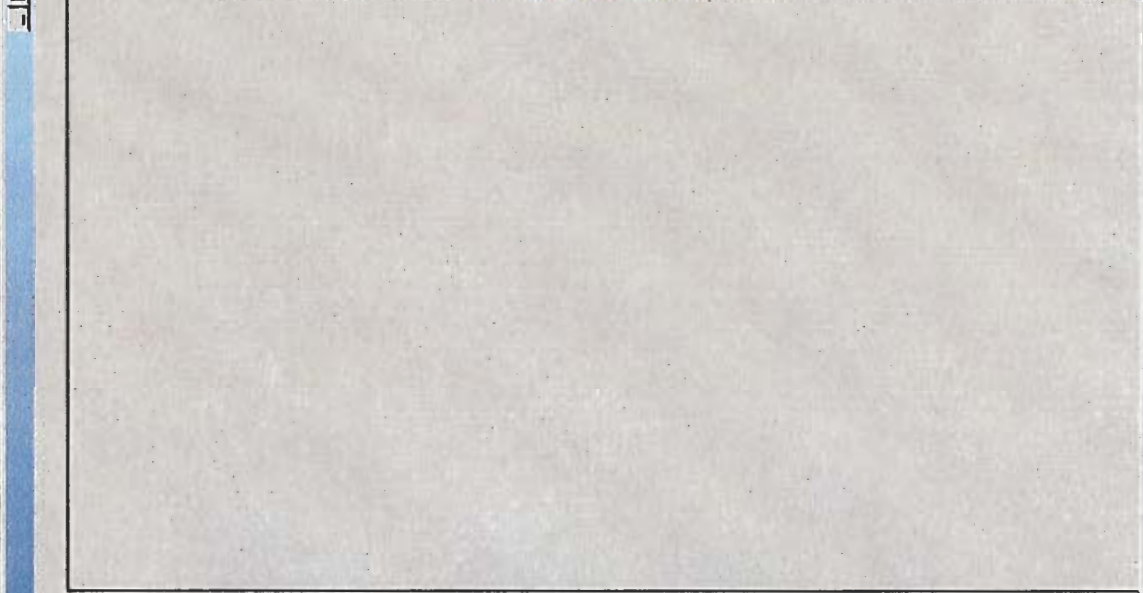


Video Length: 00:00:36 GPS Lat: 34:13:03
Position: 00:00:09 GPS Lon: -117:24:11



Monitor Parameters 1000000004.mil:

- Horn: Horn Off
- Bell: Bell On
- Speed: 31mph
- Reverser Position: Center
- Power Cutoff Switch: Closed



File View Export Options Help

Session Details

Current File: 44D12550_080206_DEVOIRE_CA_080432 GMT: 2006/08/02, 17:04:32 WheelDiameter: 39.00
Road#: BNSF # 4690 AKST: 2006/08/02, 08:04:32

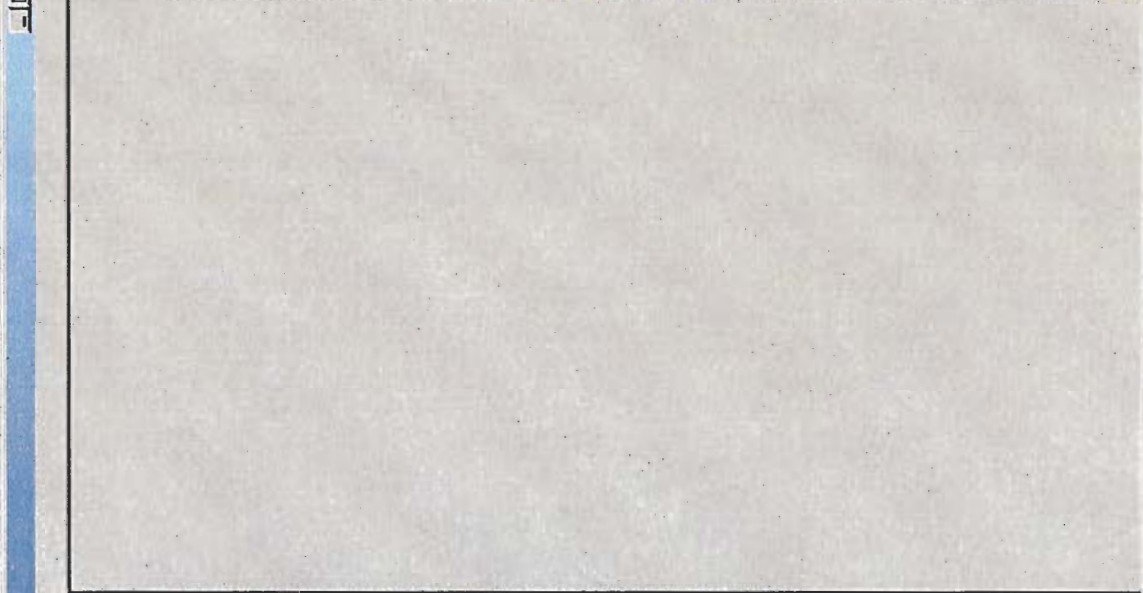


Video Length: 00:00:36 GPS Lat: 34.13:02
Position: 00:00:12 GPS Lon: -117:24:10



Monitor Parameters (00000004.imi):

- Horn: Horn Off
- Bell: Bell On
- Speed: 31mph
- Reverser Position: Center
- Power Cutoff Switch: Closed

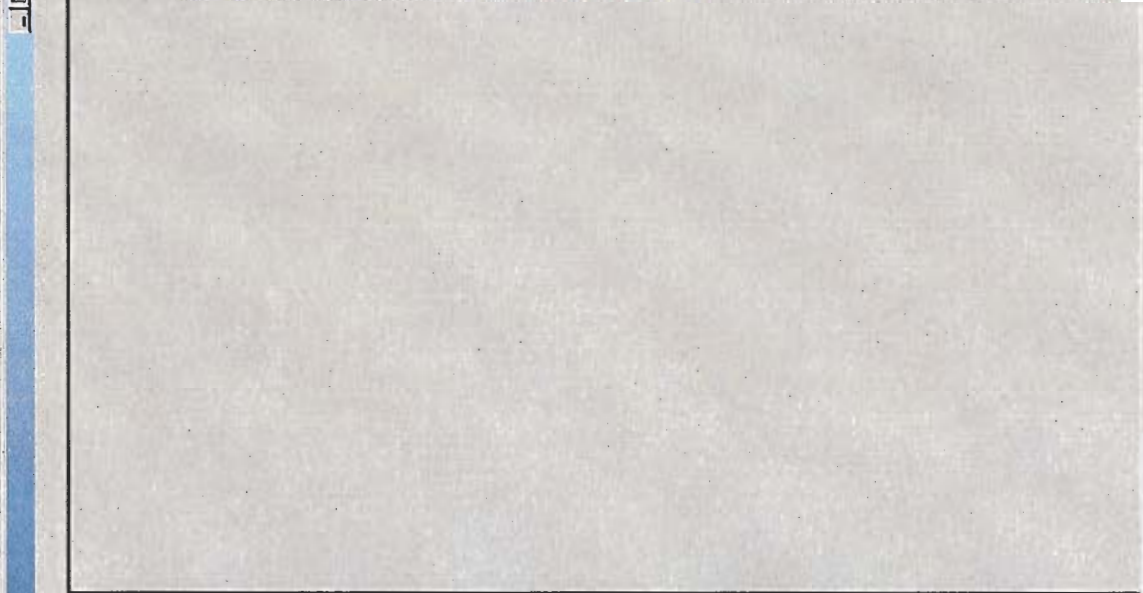


LocoCam Viewer-V 7.0 24th January GE Transportation Systems
File View Export Options Help
Session Details
Current File: 44D12550_080206_DEVORE_CA_GMT: 2006/08/02, 17:04:33 WheelDiameter: 39.00
Road#: BNSF # 4690 AKST: 2006/08/02, 08:04:33



Video Length: 00:00:36 GPS Lat: 34:13:02
Position: 00:00:13 GPS Lon: -117:24:09

Monitor Parameters 000000004.inl:
Horn: Horn Off
Bell: Bell On
Speed: 31mph
Reverser Position: Center
Power Cutoff Switch: Closed



LocoCam Viewer-V 7.0 24th January GE Transportation Systems

File View Export Options Help

Session Details
 Current File: 44D12550_080206_DEVORE_CA_GMT: 2006/08/02, 17:04:34 Wheel Diameter: 39.00
 Road#: BNSF # 4630 AKST: 2006/08/02, 08:04:34



Stop Play Previous Next Full Screen Refresh Volume Mute

Video Length: 00:00:36 GPS Lat: 34:13:02 Mute
 Position: 00:00:14 GPS Lon: -117:24:09

Monitor Parameters (00000004.iml):

- Horn: Horn On
- Belt: Bell On
- Speed: 32mph
- Reverser Position: Center
- Power Cutoff Switch: Closed

File View Export Options Help

Session Details

Current File: 44D12550_080206_DEVORE_CA_GMT: 2006/08/02, 17:04:35 WheelDiameter: 39.00
Road#: BNSF # 4690 AKST: 2006/08/02, 08:04:35



Video Length: 00:00:36 GPS Lat: 34:13:01
Position: 00:00:15 GPS Lon: -117:24:09

Monitor Parameters (000000004.ini):

- Horn: Horn On
- Belt: Bell On
- Speed: 32mph
- Reverser Position: Center
- Power Cutoff Switch: Closed

Session Details
 Current File: 44D12550_080206_DEVDRE_CA_GMT: 2006/08/02, 17:04:36 WheelDiameter: 39.00
 Roadtft: BNSF # 4690 AKST: 2006/08/02, 08:04:36



Play Stop Previous Next Full Screen Mute Volume GPS Lat: 34:13:01 GPS Lon: -117:24:08
 Video Length: 00:00:36 Position: 00:00:16

Monitor Parameters (000000004.ini):

- Horn: Horn Off
- Belt: Bell On
- Speed: 32mph
- Reverser Position: Center
- Power Cutoff Switch: Closed

File View Export Options Help

Session Details
Current File: 44012550_080206_DEVORE_CA GMT: 2006/08/02, 17:04:37 WheelDiameter: 39.00
Road#: BNSF # 4690 AKST: 2006/08/02, 08:04:37



Video Length: 00:00:36 GPS Lat: 34:13:01
Position: 00:00:17 GPS Lon: -117:24:08

Monitor Parameters [000000004.ini]

- Horn: Horn On
- Bell: Bell On
- Speed: 32mph
- Reverser Position: Center
- Power Cutoff Switch: Closed

File View Export Options Help

Session Details

Current File: 44D12550_080206_DEVORE_CA_GMT: 2006/08/02, 17:04:37 Wheel Diameter: 39.00
RoadId: BNSF H 4690 AKST: 2006/08/02, 08:04:37



Video Length: 00:00:36 GPS Lat: 34:13:01
Position: 00:00:17 GPS Lon: -117:24:08

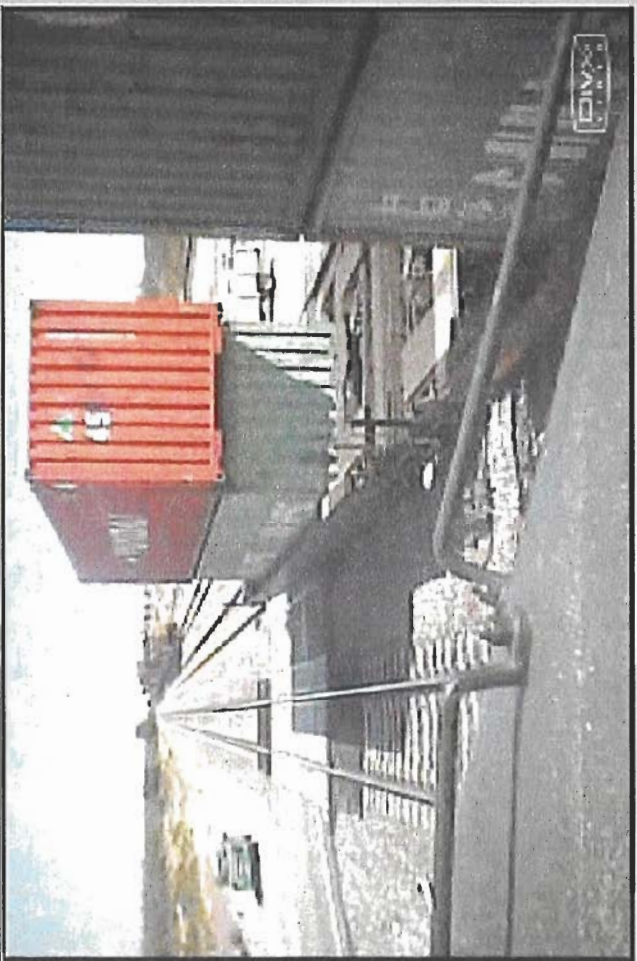
Monitor Parameters [00000004.ini]

- Horn: Horn On
- Bell: Bell On
- Speed: 32mph
- Reverser Position: Center
- Power Cutoff Switch: Closed

File View Export Options Help

Session Details

Current File: 44D12550_080206_DEVORE_CA_GMT: 2006/08/02, 17:04:39 WheelDiameter: 39.00
Road#: BNSF H 4690 AKST: 2006/08/02, 08:04:39



Video Length: 00:00:36 GPS Lat: 34:13:00
Position: 00:00:19 GPS Lon: -117:24:06



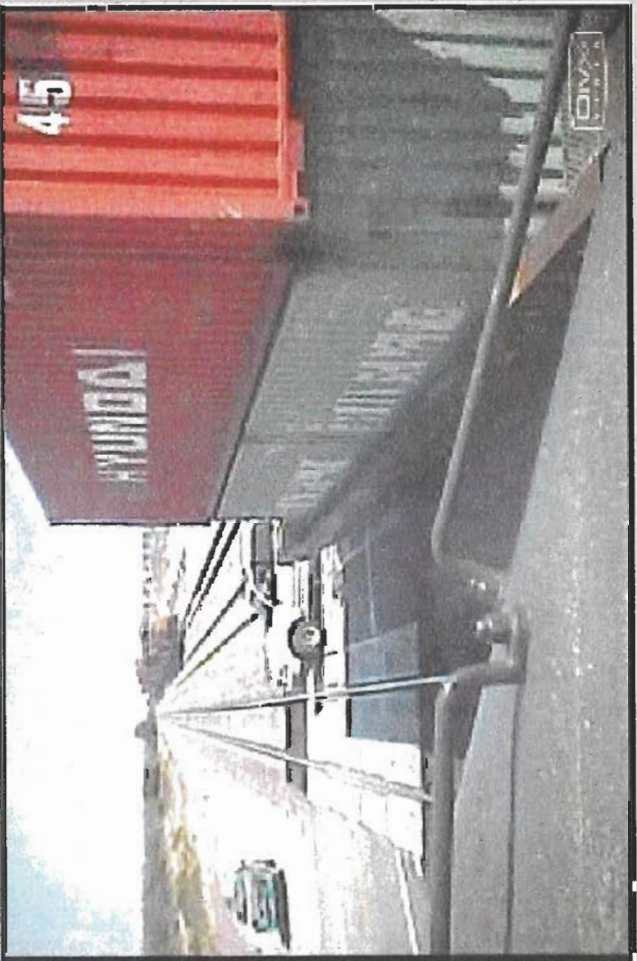
Monitor Parameters (000000004.im)

- Horn: Horn On
- Bell: Bell On
- Speed: 32mph
- Reverser Position: Center
- Power Cutoff Switch: Closed



File View Expert Options Help

Session Details
Current File: 44D12550_080206_DEVORE_CA_ GMT: 2006/08/02 17:04:39 WheelDiameter: 39.00
Road#: BNSF # 4690 AKST: 2006/08/02 08:04:39



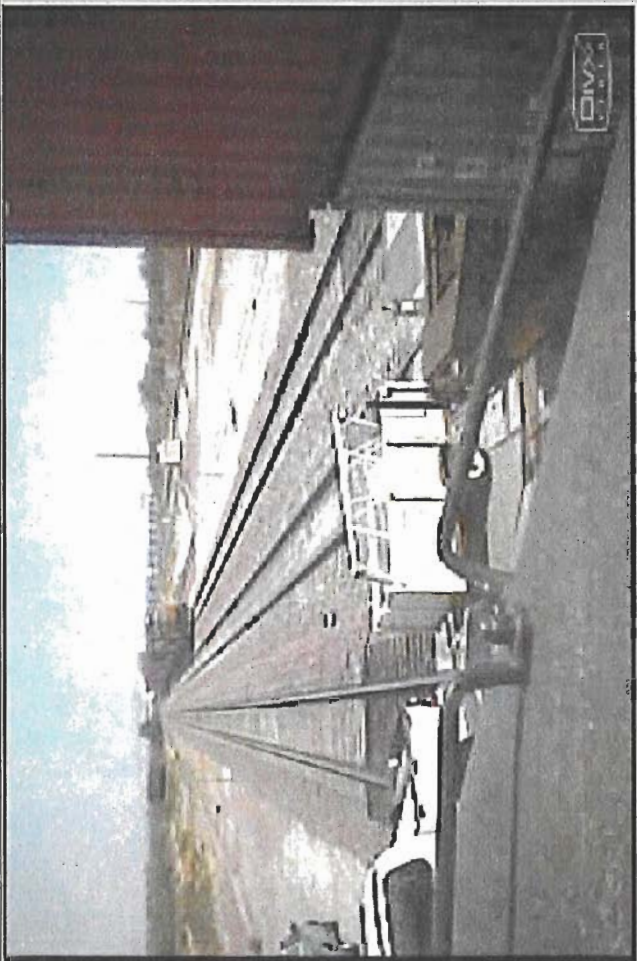
Video Length: 00:00:36 GPS Lat: 34:13:00
Position: 00:00:19 GPS Lon: -117:24:06

Monitor Parameters (000000004.mil)

- Horn:
- Bell:
- Speed: 32mph
- Reverser Position: Center
- Power Cutoff Switch: Closed



Session Details
Current File: 44D12550_080206_DEVORE_CA_GMT: 2006/08/02 17:04:40 WheelDiameter: 39.00
Road#: BNSF # 4690 AKST: 2006/08/02 08:04:40



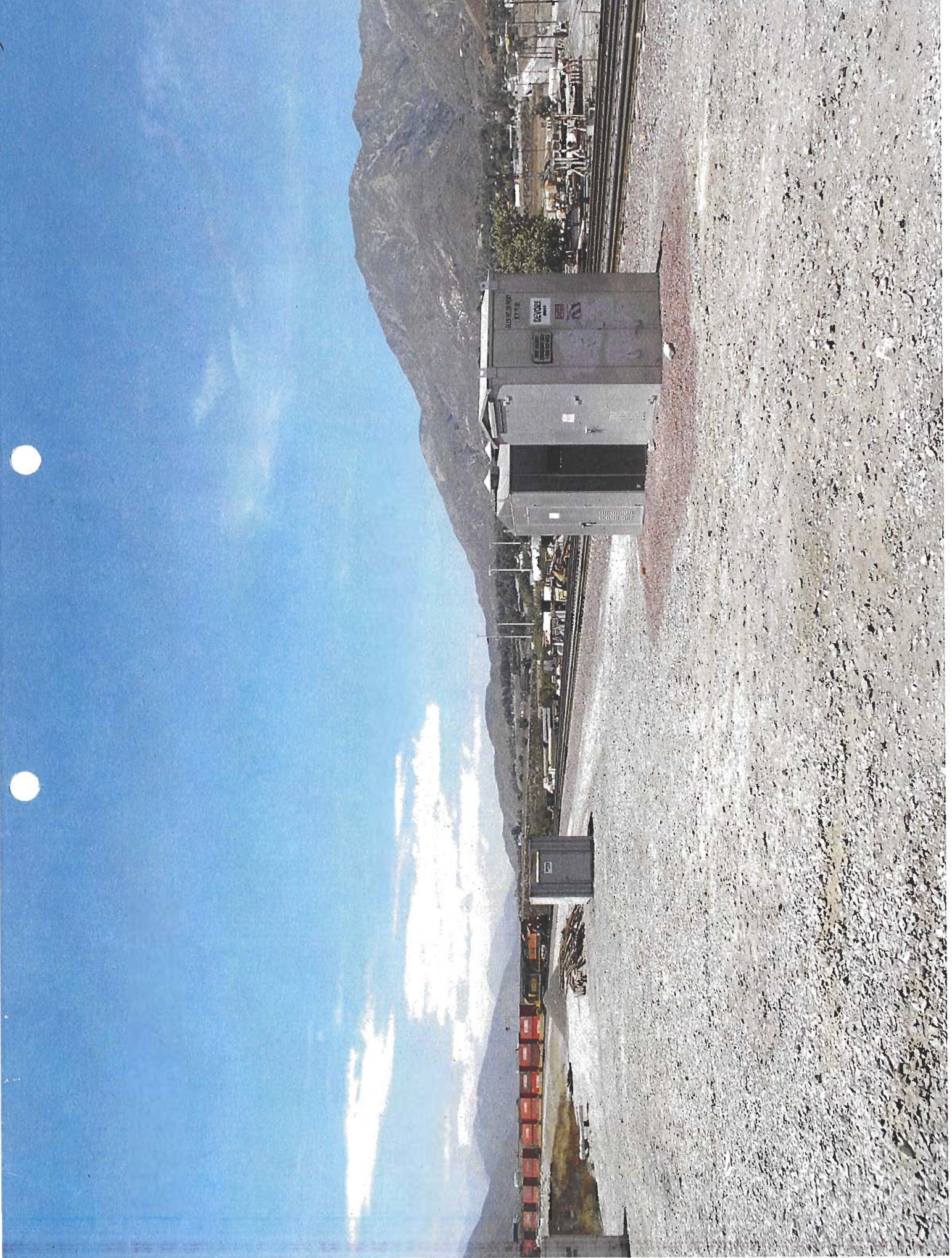
Video Length: 00:00:36
Position: 00:00:20
GPS Lat: 34:13:00
GPS Lon: -117:24:06

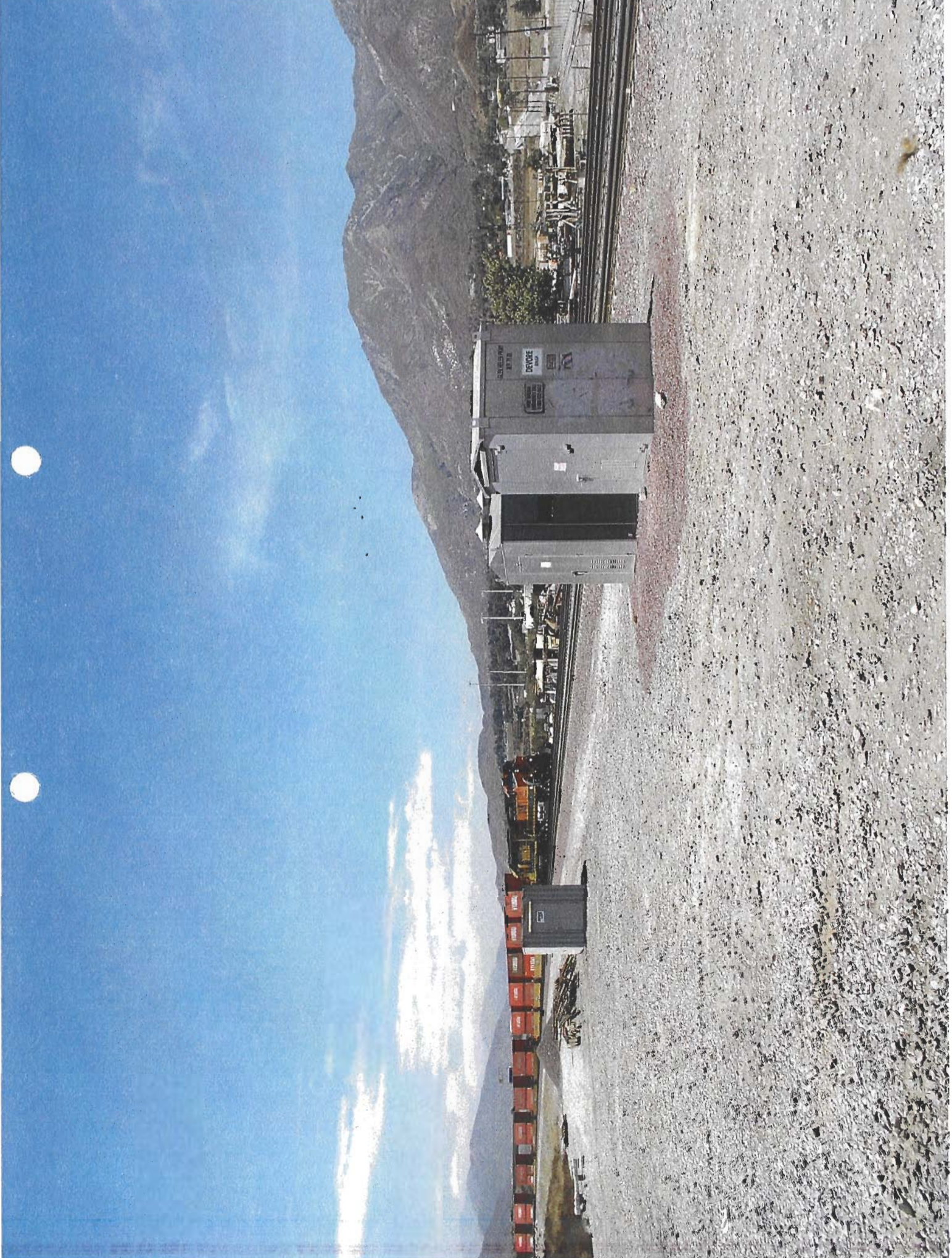


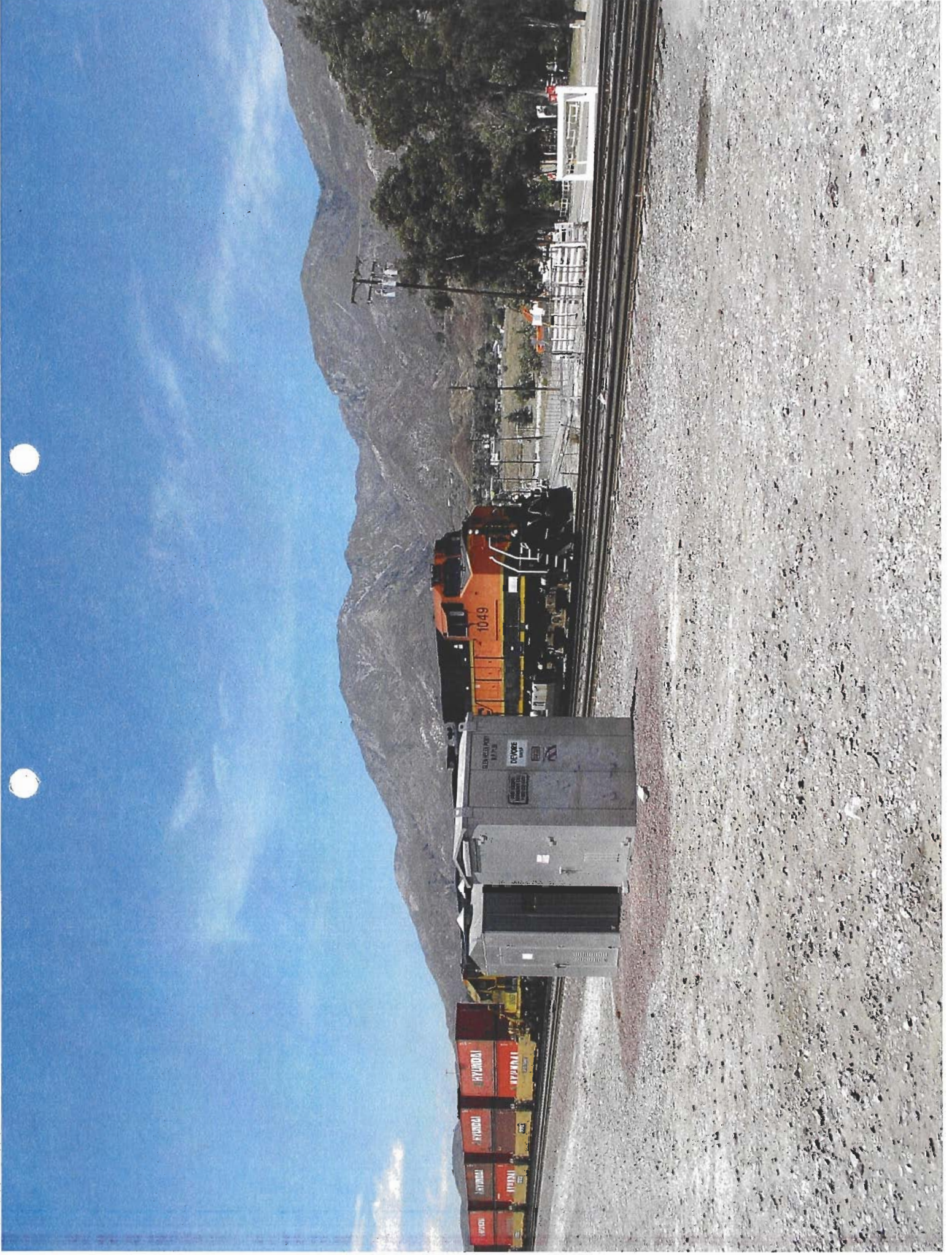
Monitor Parameters (00000004.ini):

- Horn: Horn On
- Belt: Belt On
- Speed: 32mph
- Reverser Position: Center
- Power Cutoff Switch: Closed

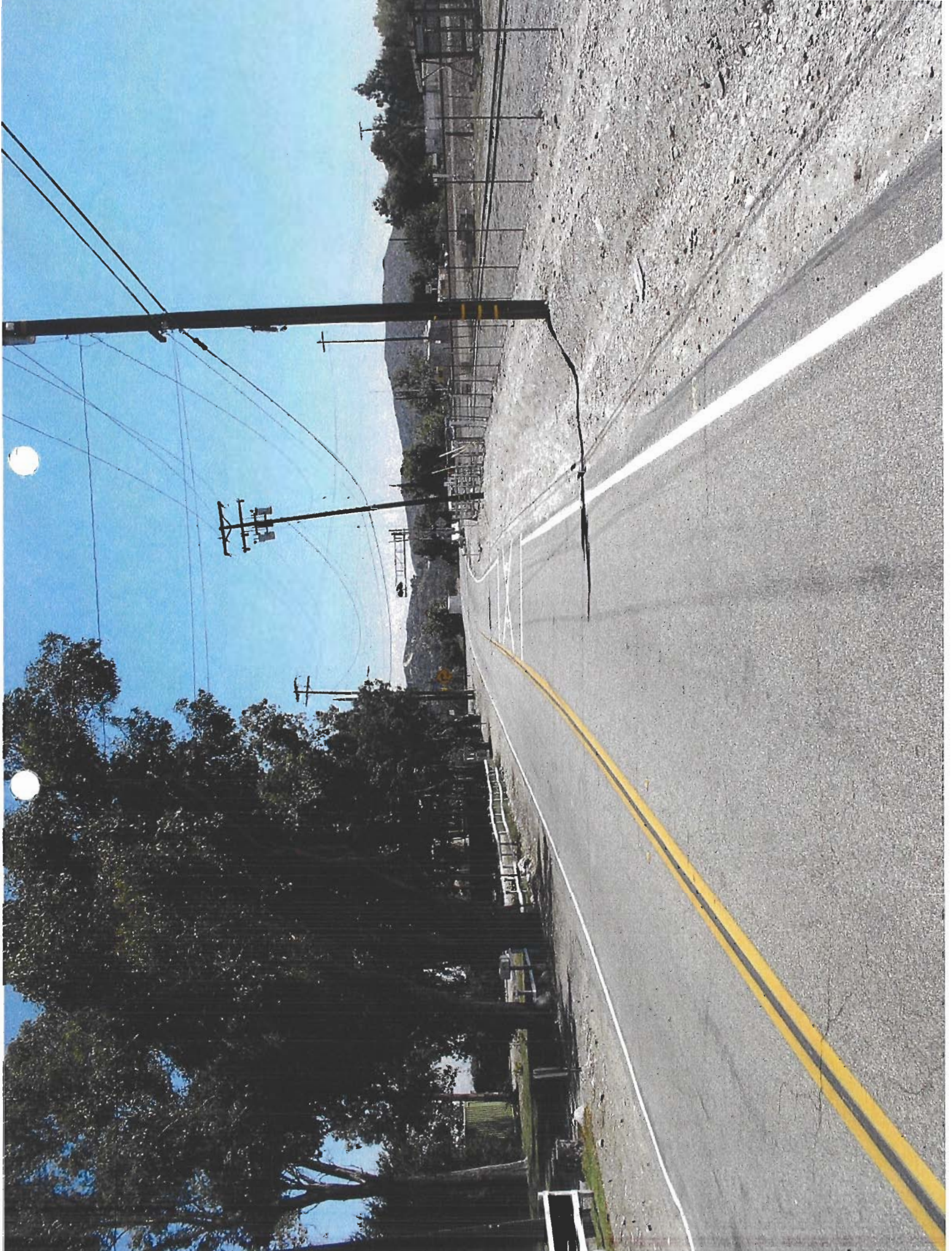
12-0-2014 Exhibit 4 (11/13-2)

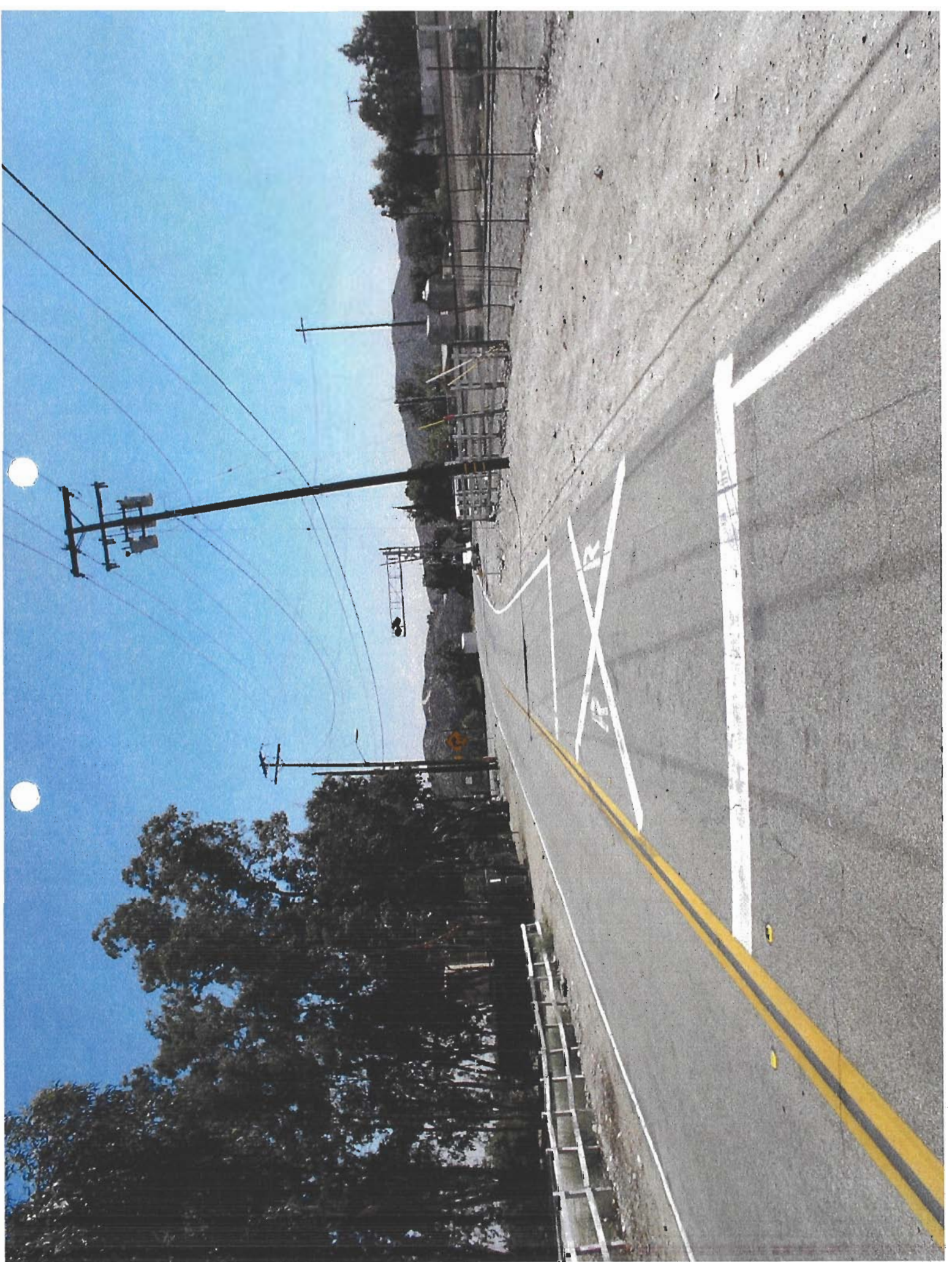


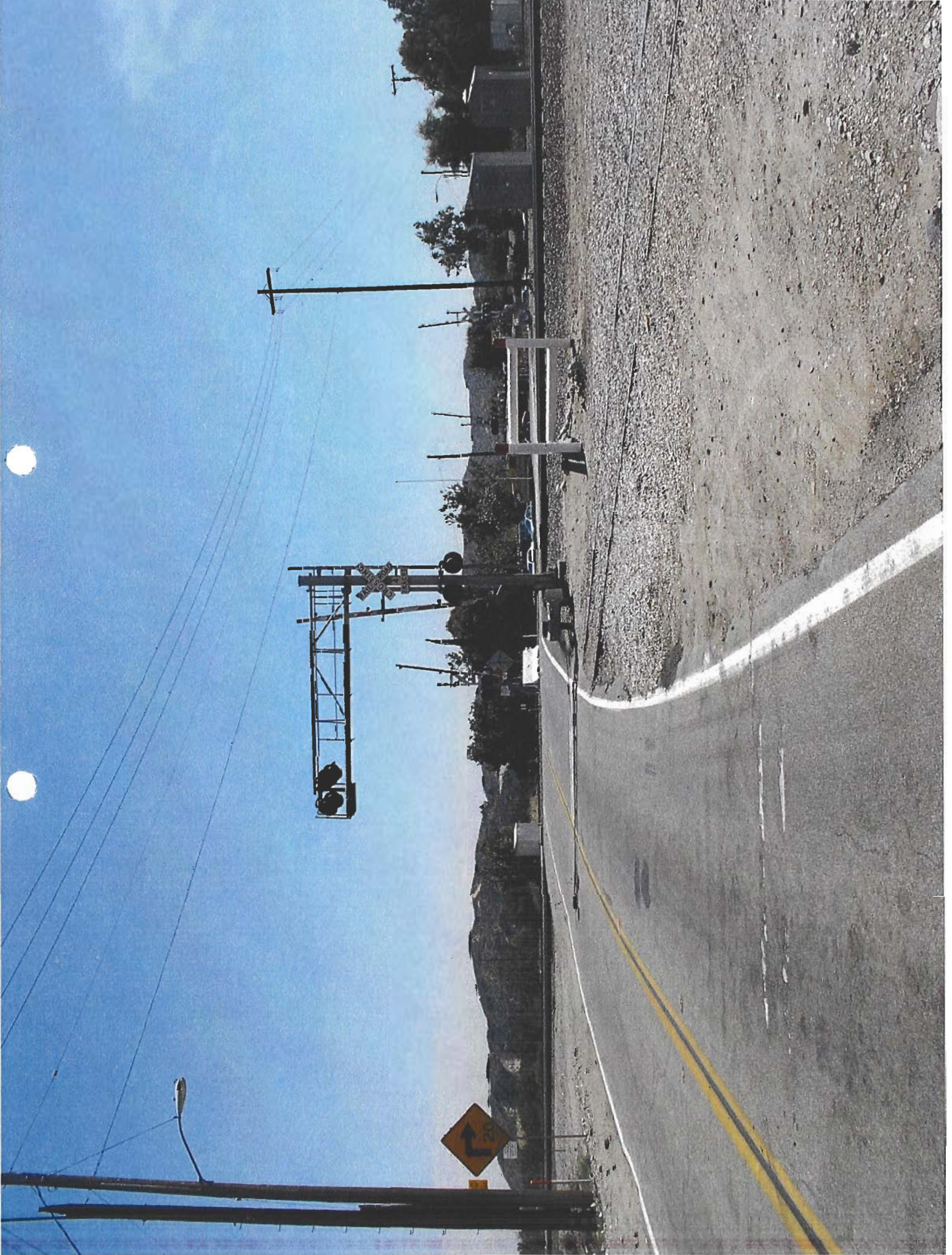


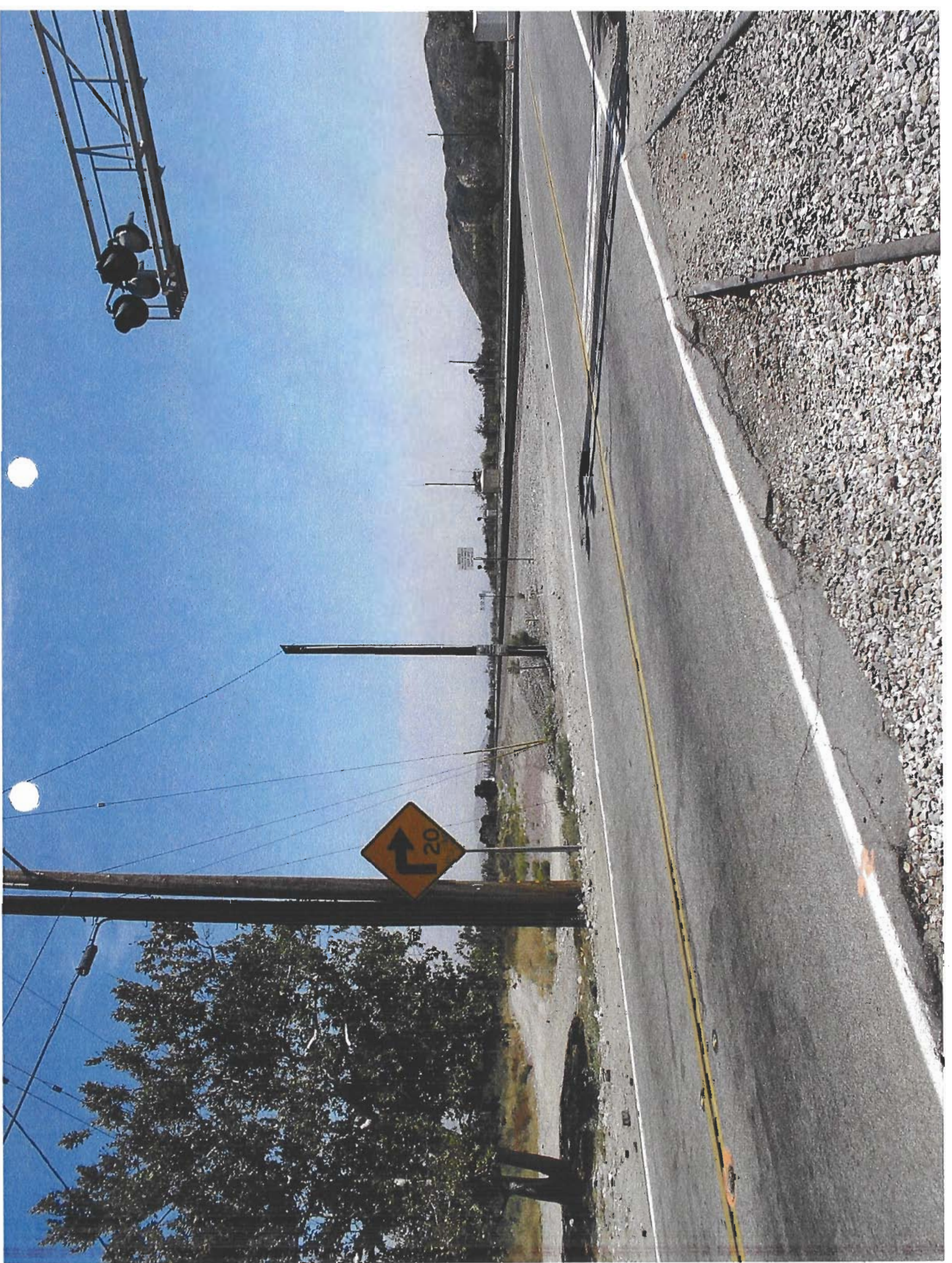


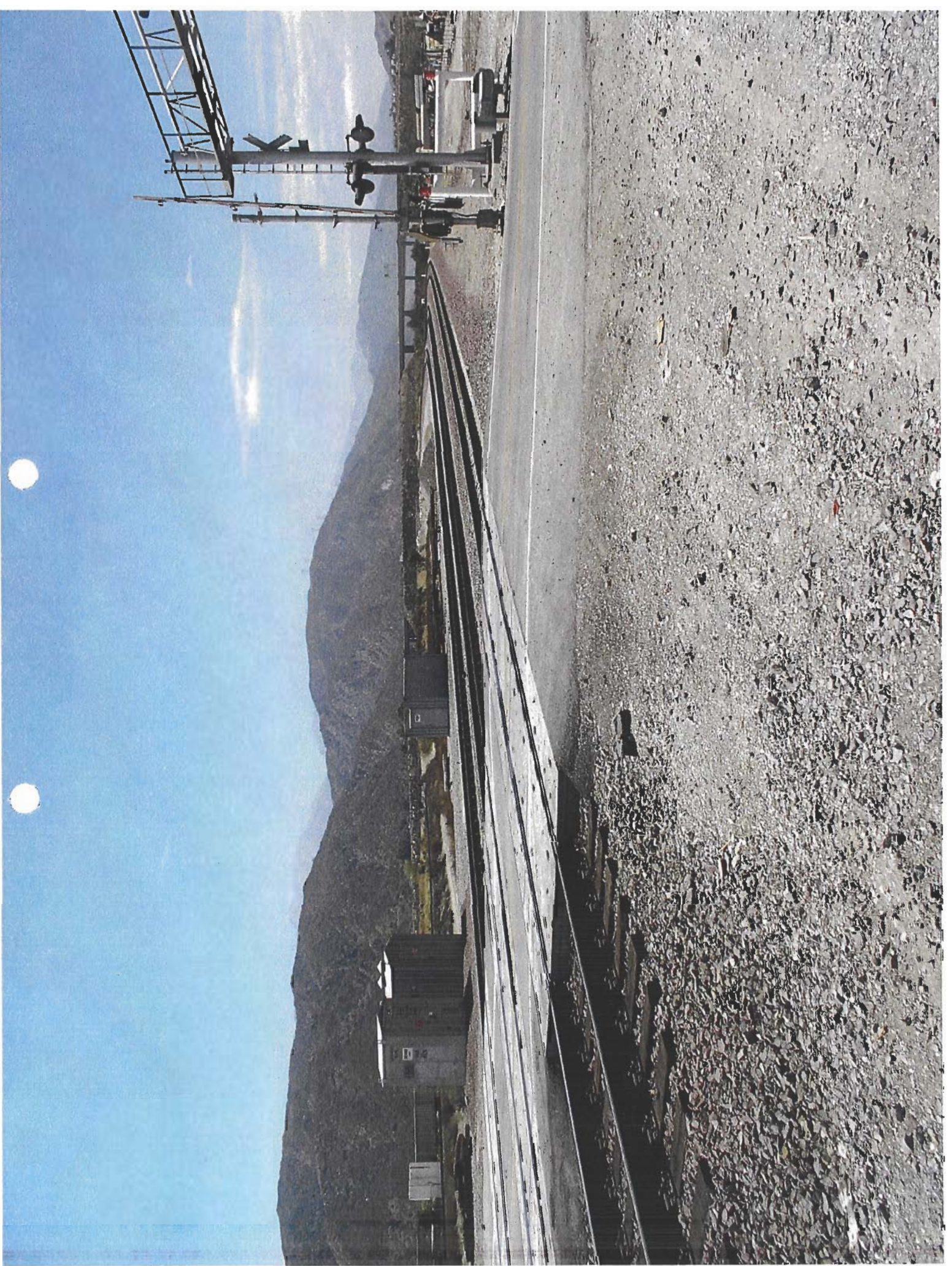














GLEN HELEN PKWY
M.P. 71.00

DEVORE
BNSF

DEVORE STATION
1-800-832-5452



BNSF RAILWAY
EMERGENCY CALL
1-800-832-5452



ALERT TO TRAIN MOVEMENT

BNSF RAILWAY
IN EMERGENCY CALL
1-800-832-6457
GLEN HELEN PKWY
M.P. 71.00
DOT 026103A

ALERT TO TRAIN MOVEMENT

