

BN, CASCADE DIVISION
BELLINGHAM SUBDIVISION

2-021R-94
9-29-94
KIMBRELL



136# CWR →
AWAITING
INSTALLATION

← UNION SLOUGH

MAINLINE TRACK
FROM SOUTH LOOKING NORTH @ MP 37.6
BRIDGE 10.5 OVER UNION SLOUGH



UNION SLOUGH →

← 136# CWR
AWAITING
INSTALLATION

MAINLINE TRACK

FROM NORTH LOOKING SOUTH @ MP 37.7
BRIDGE 10.5 OVER PRIVATE ROAD, UNION SLOUGH

WASHINGTON UTILITIES AND TRANSPORTATION COMMISSION
No. TR-940309 Ex. 22 ✓

1/22

BN CASCADE DIVISION
BELLINGHAM SUBDIVISION

2-021R-94
9-29-94
KIMBRELL

STEAMBOAT
SLOUGH →



MAINLINE TRACK
FROM SOUTH LOOKING NORTH @ MP 37.8
BRIDGE II OVER STEAMBOAT SLOUGH
MARYSVILLE, WA.

SR 529
BRIDGE →



MAINLINE
TRACK

- * 115# CONV. RAIL
- * 36" SHORT-TOE JOINT BARS
- * FAIR-IMPROVED & CHANNELOK RAIL ANCHORS

FROM NORTH LOOKING SOUTH @ MP 37.9
BRIDGE II OVER STEAMBOAT SLOUGH
MARYSVILLE, WA.

BN CASCADE DIVISION
BELLINGHAM SUBDIVISION

2-021R-94
9-29-94
KIMBRELL



SIGNAL @ MP 37.7

MAINLINE TRACK
FROM SOUTH LOOKING NORTH @ MP 37.7
BRIDGE || NEAR CENTER OF PICTURE



SIGNAL @ MP 37.9

SR 529
BRIDGE



MAINLINE
TRACK

FROM NORTH LOOKING SOUTH @ MP 37.9
BRIDGE || NEAR RIGHT-CENTER OF PICTURE
MARYSVILLE, WA.

3/22

BN, CASCADE DIVISION
BELLINGHAM SUBDIVISION

2-021R-94
9-29-94
KIMBRELL

I-5
FREEWAY →



← I-5
FREEWAY
← MILEPOST 38

MAINLINE
TRACK

↑
136# CWR AWAITING
INSTALLATION

FROM SOUTH LOOKING NORTH @ MP 38
MARYSVILLE, WA.

MILEPOST 38 →



↑
136# CWR AWAITING
INSTALLATION

MAINLINE TRACK

FROM NORTH LOOKING SOUTH @ MP 38
MARYSVILLE, WA.

BN, CASCADE DIVISION
BELLINGHAM SUBDIVISION

2-021R-94
9-29-94
KIMBRELL

I-5
FREEWAY



SIGNAL @
MP 38.2

SWITCH POINT
DERAIL @
SIGNAL

MAINLINE TRACK
FROM SOUTH LOOKING NORTH @ MP 38.2
BRIDGE 12 NEAR CENTER OF PICTURE
MARYSVILLE, WA.

I-5
FREEWAY



I-5
FREEWAY

* 115# CONV. RAIL
* PANDROL CLIPS &
PLATES

MAINLINE TRACK
FROM NORTH LOOKING SOUTH @ MP 38.3
BRIDGE 12 DECK IN FOREGROUND
MARYSVILLE, WA.

5/22

BN, CASCADE DIVISION
BELLINGHAM SUBDIVISION

2-021R-94
9-29-94
KIMBRELL



← EBEY SLOUGH

MAINLINE TRACK
FROM SOUTH LOOKING NORTH @ MP 38.3
BRIDGE 12 OVER EBEY SLOUGH
MARYSVILLE, WA.



← I-5
FREEWAY

MAINLINE TRACK
FROM NORTH LOOKING SOUTH @ MP 38.4
BRIDGE 12 OVER EBEY SLOUGH
MARYSVILLE, WA.

6/22

BN, CASCADE DIVISION
BELLINGHAM SUBDIVISION

2-021R-94
9-29-94
KIMBRELL

CEDAR AVE. →



- * #11 RIGHTHAND TURNOUT
- * RIGID RAIL-BOUND MANGANESE-INSERT FROG
- * BETHLEHEM HOOK-FLANGE GUARD RAILS

B&B SPUR MAINLINE TRACK
FROM SOUTH LOOKING NORTH @ MP 38.5
MARYSVILLE, WA.

REVERSE VIEW
OF LEFTHAND
CURVE 38
0°51' 490'



← SIGNAL @
MP 38.5

B&B SPUR

MAINLINE TRACK
FROM NORTH LOOKING SOUTH @ MP 38.5
1ST ST. XING IN FOREGROUND, MARYSVILLE, WA.
BRIDGE 12 NEAR CENTER OF PICTURE

BN, CASCADE DIVISION
BELLINGHAM SUBDIVISION

2-021R-94
9-29-94
KIMBRELL

MARYSVILLE STATION →
MARYSVILLE SIDING →



115# #11 LEFT-HAND TURNOUT

MAINLINE TRACK
FROM SOUTH LOOKING NORTH @ MP 38.8
MARYSVILLE, WA.

MARYSVILLE STATION →



MARYSVILLE SIDING

MAINLINE TRACK
FROM NORTH LOOKING SOUTH @ MP 38.8
MARYSVILLE, WA.

8/22

BN, CASCADE DIVISION
BELLINGHAM SUBDIVISION

2-021R-94
9-29-94
KIMBRELL



8TH ST. →

MARYSVILLE
SIDING →

← MILEPOST 39

← 8TH ST.

MAINLINE TRACK

FROM SOUTH LOOKING NORTH @ MP 39
MARYSVILLE, WA.



MILEPOST 39 →

* 115# CONV. RAIL

* 36" SHIRT-TOE
JOINT BARS

* FAIR-IMPROVED &
CHANNELOK
RAIL ANCHORS

MAINLINE TRACK

← MARYSVILLE
SIDING

90# CONV. RAIL

FROM NORTH LOOKING SOUTH @ MP 39
MARYSVILLE, WA.

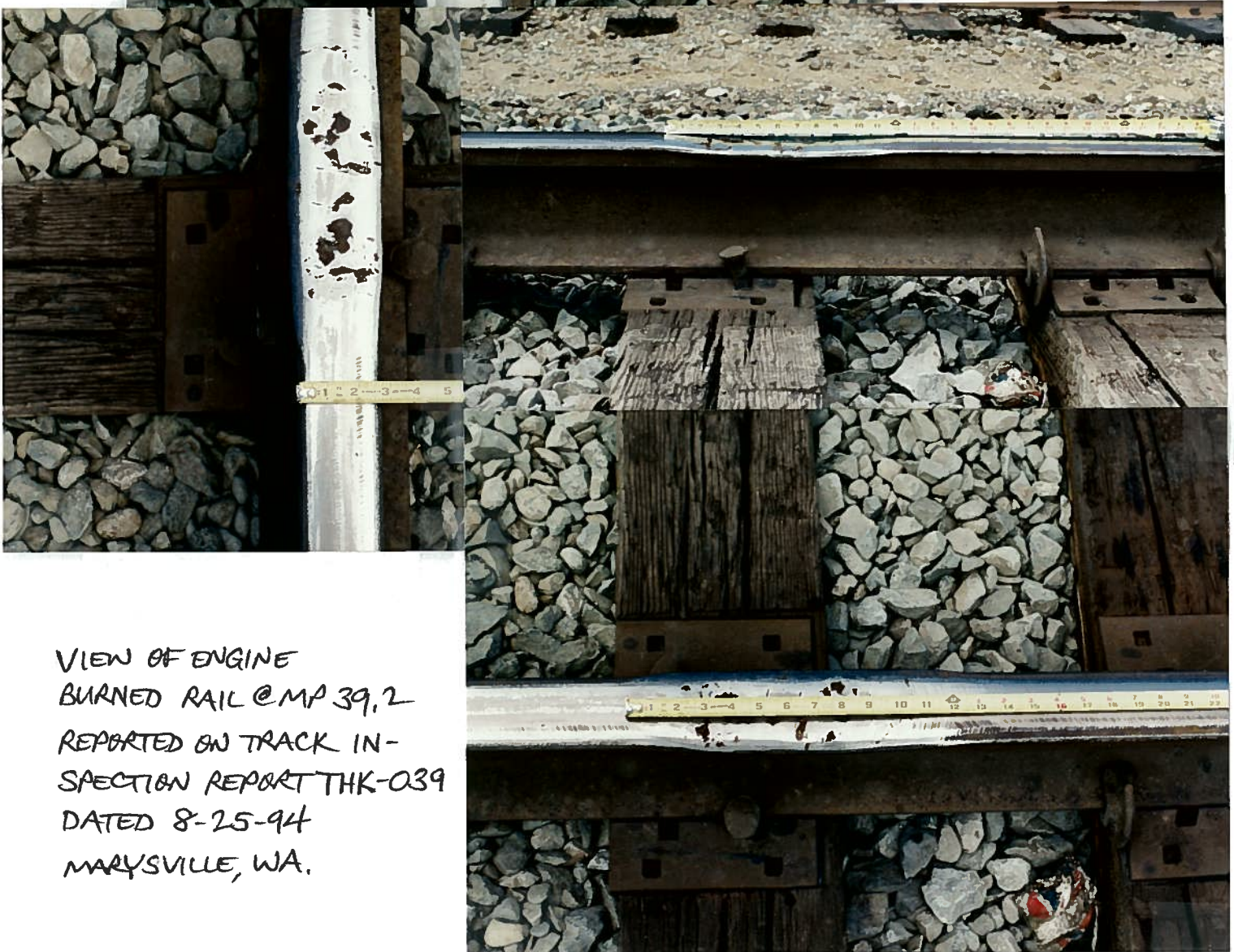
9/22

BN, CASCADE DIVISION
BELLINGHAM SUBDIVISION

2-024R-94
9-29-94
KIMBRELL



VIEW OF ENGINE
BURNED RAIL @
MP 39.2
MARYSVILLE, WA,
115# CONVENTIONAL
MAINLINE RAIL



VIEW OF ENGINE
BURNED RAIL @ MP 39.2
REPORTED ON TRACK IN-
SPECTION REPORT THK-039
DATED 8-25-94
MARYSVILLE, WA.

10/22

BN, CASCADE DIVISION
BELLINGHAM SUBDIVISION

2-021R-94
9-29-94
KIMBRELL



* RIGID RAIL-BOUND
MANGANESE-INSERT
FROG
* RACOR "ONE-PIECE"
GUARD RAILS

MARYSVILLE SIDING

MAINLINE TRACK

FROM SOUTH LOOKING NORTH @ MP 39.2
NOTE TRESPASSER SILHOUETTED IN TRACK
NEAR CENTER OF PICTURE



115# #11 RIGHT-
HAND TURNOUT

TRESPASSER →
PATH

MAINLINE TRACK

FROM NORTH LOOKING SOUTH @ MP 39.2
MARYSVILLE, WA.

11/22

BN, CASCADE DIVISION
BELLINGHAM SUBDIVISION

2-024R-94
9-30-94
KIMBRELL

20 MPH
SOUTHWARD →



← 25 MPH
NORTHWARD

MAINLINE
TRACK

FROM SOUTH LOOKING NORTH @ MP 39.6
MARYSVILLE, WA.

25 MPH
NORTHWARD →



← 20 MPH
SOUTHWARD

MAINLINE
TRACK

FROM NORTH LOOKING SOUTH @ MP 39.6
NOTE TRESPASSERS IN TRACK

12/22

BN, CASCADE DIVISION
BELLINGHAM SUBDIVISION

2-021R-94
9-30-94
KIMBRELL



SIGNALS @ MP 40

← MILEPOST 40

← SMOKEY POINT
BLVD. (OLD 99)

MAINLINE TRACK

FROM SOUTH LOOKING NORTH @ MP 40
PRIVATE XING NEAR CENTER OF PICTURE



SIGNALS
@ MP 40

MILEPOST 40 →

SMOKEY POINT
BLVD. (OLD 99) →

- * 115# CONV. RAIL
- * 36" SHORT-TOE JOINT BARS
- * FAIR-IMPROVED RAIL ANCHORS

MAINLINE TRACK

FROM NORTH LOOKING SOUTH @ MP 40
MARYSVILLE, WA.

BN, CASCADE DIVISION
BELLINGHAM SUBDIVISION

2-021R-94
9-30-94
KIMBRELL



MAINLINE
TRACK

← MILEPOST 41

FROM SOUTH LOOKING NORTH
AT MILEPOST 41

↖ TRESPASSER PATH

MILEPOST 41 →



TRESPASSER
PATH →

MAINLINE TRACK
FROM NORTH LOOKING SOUTH @ MP 41
MARKSVILLE, WA.

14
/22

BN, CASCADE DIVISION
BELLINGHAM SUBDIVISION

2-021R-94
9-29-94
KIMBRELL

VIEW OF LEFT-
HAND CURVE 41
1°32' 1930'
2" ELEV./25MPH



← SIGNAL
@ MP 41.4

MAINLINE
TRACK

← 136# CWR
AWAITING INSTALLATION
FROM SOUTH LOOKING NORTH @ MP 41.4

REVERSE VIEW
OF LEFTHAND
CURVE 41



← SIGNAL
@ MP 41.7

TRESPASSER
PATH →
136# CWR
AWAITING
INSTALLATION →

MAINLINE TRACK

FROM NORTH LOOKING SOUTH @ MP 41.4
MARYSVILLE, WA.

15/22

BN, CASCADE DIVISION
BELLINGHAM SUBDIVISION

2-021R-94
9-29-94
KIMBRELL

116TH NE →
XING



← MILEPOST 42

← SMOKEY PT.
BLVD. (OLD 99)

MAINLINE TRACK
FROM SOUTH LOOKING NORTH @ MP 42
MARYSVILLE, WA.

MILEPOST 42 →

SMOKEY POINT →
BLVD. (OLD 99)



MAINLINE TRACK

FROM NORTH LOOKING SOUTH @ MP 42
MARYSVILLE, WA.

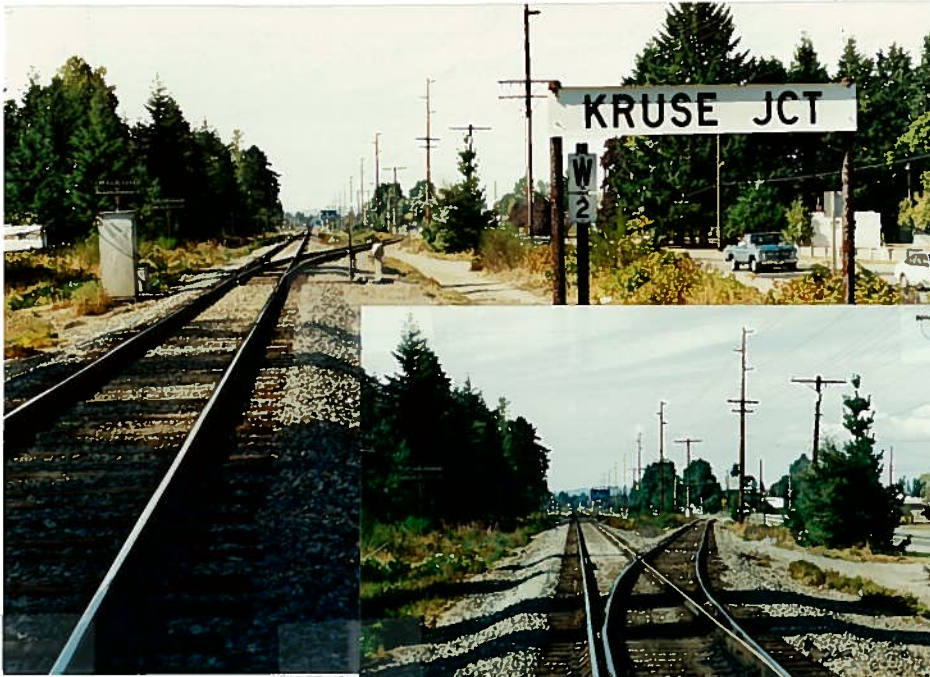
16
/ 22

BN, CASCADE DIVISION, BELLINGHAM SUB.

2-021R-94

9-29-94

KIMBRELL



MAIN
LINE
TRACK

← SMOKEY PT. BLVD. (OLD 99)

KRUSE JCT. MP42.2
BOTH PICTURES FROM
SOUTH LOOKING NORTH
MARYSVILLE, WA.



MAINLINE TRACK

SMOKEY PT. →
BLVD. (OLD 99)



BRANCH LINE
TRACK TO
DARRINGTON

- * #11 RIGHTHAND
TURNOUT
- * RIGID RAIL-BOUND
MANGANESE-
INSERT FROG
- * BETHLEHEM HOOK-
FLANGE GUARD
RAILS

MAINLINE TRACK

FROM NORTH LOOKING SOUTH @ MP42.2
KRUSE JCT. - MARYSVILLE, WA.

17
/22

BN, CASCADE DIVISION
BELLINGHAM SUBDIVISION

2-021R-94
9-30-94
KIMBRELL



MAINLINE
TRACK

← MILEPOST 43
← SMOKEY PT. BLVD.
(OLD 99)

FROM SOUTH LOOKING NORTH @ MP 43
MARYSVILLE, WA.



MILEPOST 43 →
SMOKEY PT. BLVD. (OLD 99) →

MAINLINE
TRACK

FROM NORTH LOOKING SOUTH @ MP 43
MARYSVILLE, WA.

BN, CASCADE DIVISION
BELLINGHAM SUBDIVISION

2-021R-94
9-30-94
KIMBRELL

36TH AVE N.E. →



← SMOKEY PT.
BLVD. (OLD 99)

INDUSTRY
TRACK

MAINLINE TRACK
FROM SOUTH LOOKING NORTH @ MP 43.2
MARYSVILLE, WA

SMOKEY PT.
BLVD. (OLD 99) →



MAINLINE TRACK
FROM NORTH LOOKING SOUTH @ MP 43.2

19/22

BN, CASCADE DIVISION
BELLINGHAM SUBDIVISION

2-021R-94
9-30-94
KIMBRELL



36TH AV. N. E. →

← SIGNALS @
MP 43.2

← SMOKEY PT.
BLVD. (OLD 99)

MAINLINE TRACK
FROM SOUTH LOOKING NORTH @ MP 43.2
MARYSVILLE, WA.



OLD 99 →
SMOKEY PT. BLVD.

← SIGNALS @
MP 43.2

← 36TH AV. N. E.

MAINLINE TRACK
FROM NORTH LOOKING SOUTH @ MP 43.2

20/22

BN, CASCADE DIVISION
BELLINGHAM SUBDIVISION

2-021R-94
9-30-94
KIMBRELL

25 MPH
SOUTHBOUND



← 50 MPH
NORTHBOUND
← OLD 99
SMOKEY PT.
BLVD.

MAINLINE
TRACK

FROM SOUTH LOOKING NORTH @ MP 43.3
MARYSVILLE, WA.

50 MPH
NORTHBOUND



OLD 99
SMOKEY PT.
BLVD.



← 25 MPH
SOUTHBOUND
← 36TH AV. NE.

MAINLINE
TRACK

FROM NORTH LOOKING SOUTH @ MP 43.3
MARYSVILLE, WA.

21/22

BN, CASCADE DIVISION
BELLINGHAM SUBDIVISION

2-021R-94
9-30-94
KIMBRELL

136TH ST, NE. →



← 136TH ST, NE.
@ OLD 99

MAINLINE TRACK
FROM SOUTH LOOKING NORTH @ MP 43.3

OLD 99
@
136TH ST, NE. →



← 136TH ST, NE.

MAINLINE TRACK
FROM NORTH LOOKING SOUTH @ MP 43.3

22/22