

TR-042083

Hunter, Kathy (UTC)

From: Malcolm Bowie [Malcolm.Bowie@co.benton.wa.us]
Sent: Monday, January 04, 2010 2:13 PM
To: Hunter, Kathy (UTC)
Cc: Steve Becken; Sue Schuetze
Subject: order TR-0402083 amendment
Attachments: Wisser Parkway @ BNSF RR.pdf

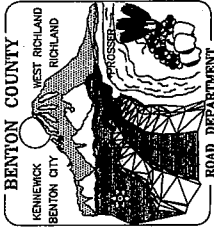
Ms Hunter

Per our discussion last week I have attached the updated plans for the Benton Co. Sage Brush Road RxR crossing so you can issue the amended order. TR-0402083

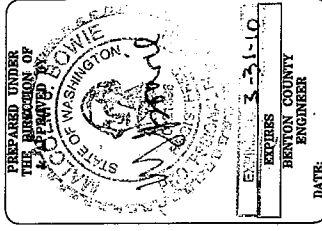
I also talked with Todd Kuhn of BNSF this morning. Todd indicated he had talked with you and that BNSF will be issuing the crossing number. Thanks for your help.

If you need anything else please let us know.

Malcolm Bowie P.E.
Benton County Engineer
620 Market Street, Prosser Wa. 99336
509-786-5611 ext 5666
cell 509-778-2841
Malcolm.Bowie@co.benton.wa.us



WISER PARKWAY
AT BNSF RAILROAD
CE 1918 CRP



CALL TWO WORKING DAYS BEFORE YOU DIG. ALL UNDESIRABLE UTILITIES ARE NOT SHOWN. THE LOCATION OF THESE UTILITIES IS RESPONSIBLE TO FIELD VERIFY WITH THE UTILITY COMPANIES. ANY ENGINEER FOR RESOLUTION OF CONFLICTS.

DIV: I.S.S.
DATE: 09/28/09
SCALE: Noted
FILE NAME: C:\WORK\BNSF\CE 1918 CRP

VICINITY MAP AND TITLE SHEET

SHEET 1 OF 6

BENTON COUNTY WASHINGTON STATE

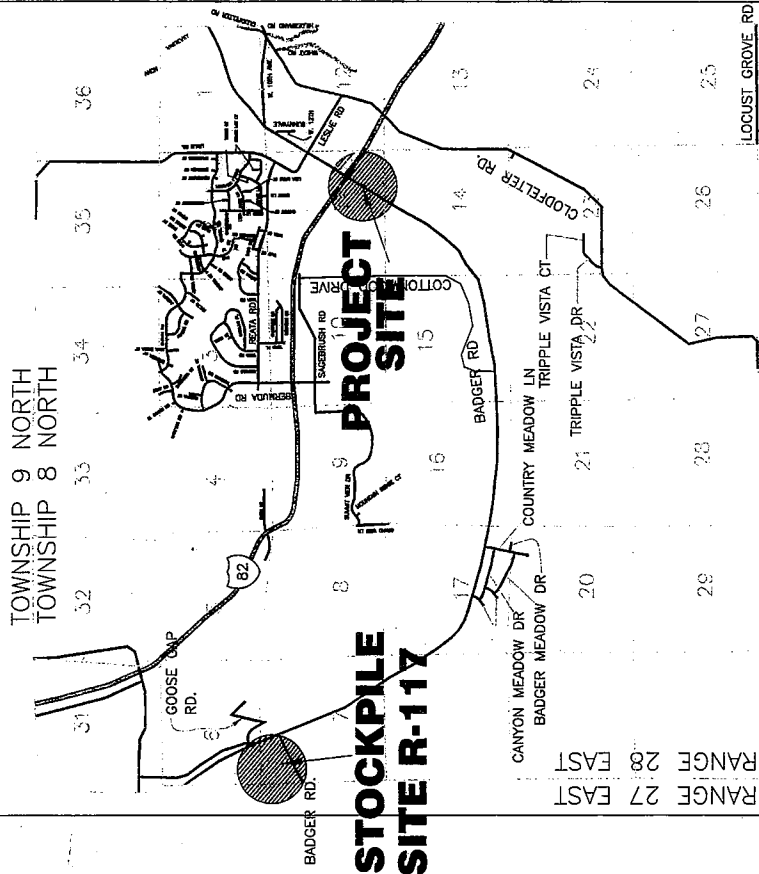
| SHEET TITLE | INDEX | NUMBER |
|-------------------------------------------|-------|--------|
| VICINITY MAP AND TITLE SHEET | 1 | 1 |
| SUMMARY OF QUANTITIES AND STRUCTURE NOTES | 2 | 2 |
| PAVEMENT MARKING PLAN | 3 | 3 |
| PLAN AND PROFILE | 4 | 4 |
| DETAIL SHEETS | 5-6 | 5-6 |

SIGNATURES

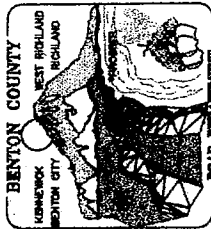
APPROVED: *W. M. Owsie* COUNTY ENGINEER DATE: 9-28-09
 APPROVED: *Maec Berub* CHAIRMAN, BENTON COUNTY COMMISSIONERS DATE: 9-28-09
 ATTEST: *Carrie Mays* CLERK OF THE BOARD DATE: 9-28-09

WISER BLVD AT BNSF RAILROAD VICINITY MAP

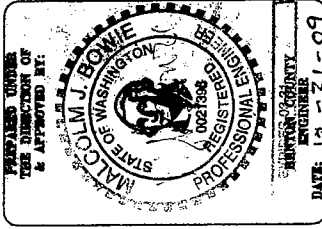
NOT TO SCALE



STOCKPILE SITE R-117



WISER PARKWAY
 AT BNSF RAILROAD
 CE 1918 CRP

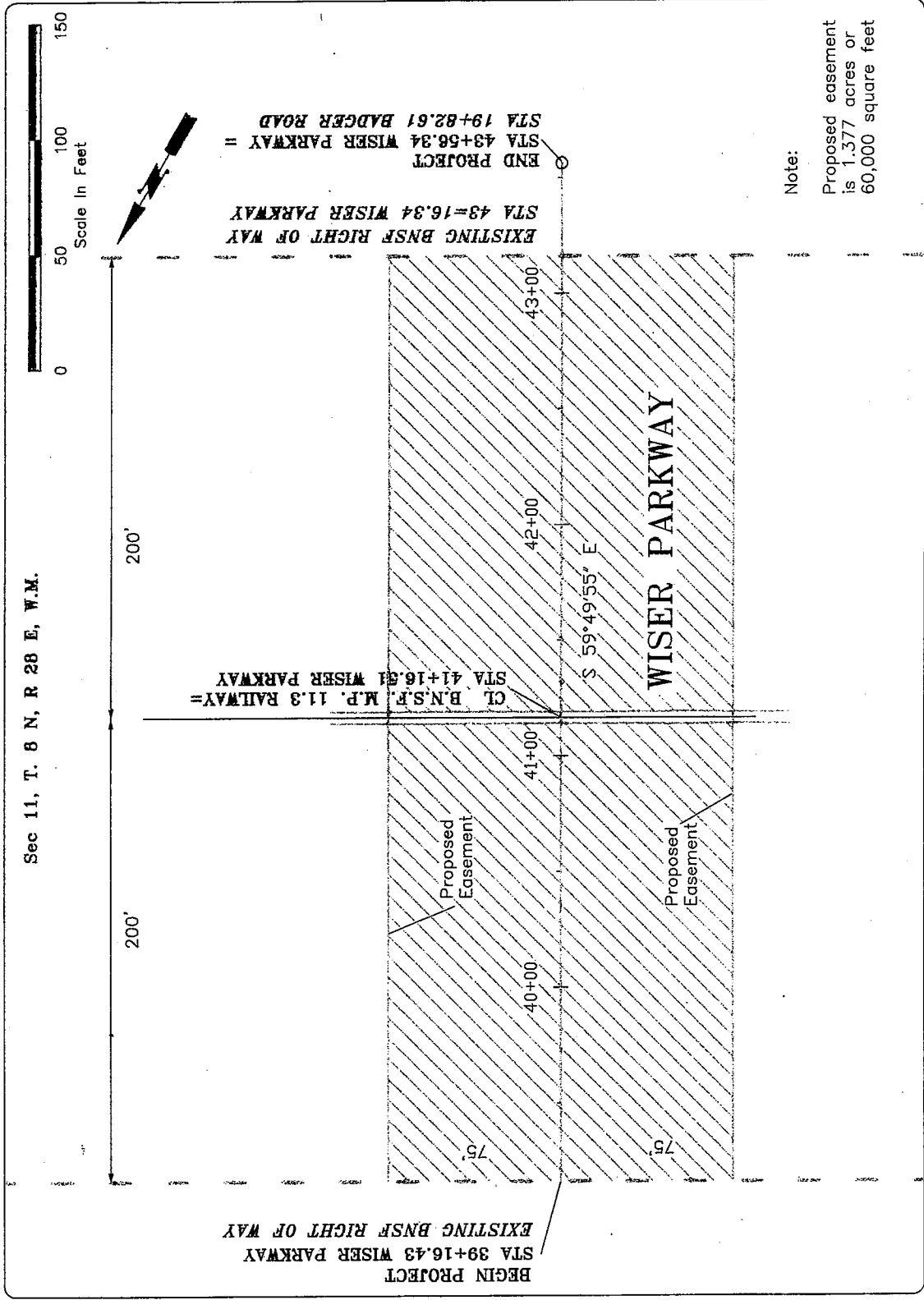


ALL INFORMATION LIMITED AND STRUCTURES
 SHALL BE THE PROPERTY OF THE ENGINEER
 AND SHALL NOT BE REPRODUCED OR COPIED
 IN ANY MANNER WITHOUT THE WRITTEN
 CONSENT OF THE ENGINEER. ANY REPRODUCTION
 WITHOUT THE WRITTEN CONSENT OF THE ENGINEER
 IS PROHIBITED.

| | |
|-----------|------------|
| DATE: | 11/24/2000 |
| SCALE: | NOTED |
| REVISION: | |

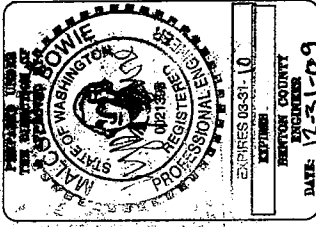
BNSF EASEMENT

SHEET 1 OF 1





WISER PARKWAY
AT BNSF RAILROAD
C/E 1918 CRP



EXPIRES 08-31-10
DATE: 12-31-09
CASE NO. 1918 CRP

DR: LBB
DATE: 9/26/09
SCALE: None
REVISED: 12/26/09

SUMMARY OF
QUANTITIES AND
STRUCTURE NOTES
SHEET 2 OF 6

SUMMARY OF QUANTITIES

WISER BLVD: BADGER ROAD TO BNSF RAILROAD RIGHT OF WAY 450' FEET

NOTE: FOR SPECIAL FEATURES SEE SPECIAL PROVISIONS

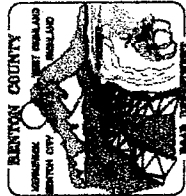
| ITEM NO. | TOTAL QUANTITY | UNIT | ITEM DESCRIPTION |
|-----------------------|----------------|------|-------------------------------------------------------------------------------------------------------------|
| BASE BID ITEMS | | | |
| 1 | LUMP SUM | L.S. | MOBILIZATION |
| 2 | 9,100 | C.Y. | EMBANKMENT COMPACTION |
| 3 | 13,000 | C.Y. | COMMON BORROW INCLUDING HAUL |
| 4 | 250 | C.Y. | PLAIN STEEL CULVERT PIPE 0.064 INCH THICK 48" DIAMETER * |
| 5 | 12 | L.F. | QUARRY SPALLS |
| 6 | LUMP SUM | L.S. | REINFORCED HEADWALLS FOR CULVERT PIPE WITH CLASS 3000 CONCRETE** |
| 7 | 395 | C.Y. | STRUCTURE EXCAVATION CLASS B |
| 8 | 110 | C.Y. | CRUSHED SURFACING TOP COURSE FROM STOCKPILE SP-117 FOR GRAVEL BACKFILL FOR PIPE ZONE BEDDING INCLUDING HAUL |
| 9 | 225 | C.Y. | SURFACING CRUSHED SURFACING TOP COURSE FROM STOCKPILE SP-117 INCLUDING HAUL |
| 10 | 875 | C.Y. | MODIFIED CRUSHED SURFACING FROM STOCKPILE SP-117 INCLUDING HAUL |
| 11 | 215 | TON | HMA CLASS 1/2 INCH PG 64-26 |
| 12 | 115 | C.Y. | CEMENT CONCRETE PAVEMENT CEMENT CONCRETE PAVEMENT INCLUDING DOWEL BARS |
| 13 | 1.0 | ACRE | EROSION CONTROL AND PLANTING SEEDING, FERTILIZING, AND MULCHING |
| 14 | LUMP SUM | L.S. | PROJECT TEMPORARY TRAFFIC CONTROL |
| 15 | LUMP SUM | L.S. | PAINT LINE |
| 16 | LUMP SUM | L.S. | PAVEMENT MARKING |
| 17 | 580 | L.F. | BEAM GUARDRAIL TYPE 1 |
| 18 | 6 | EACH | BEAM GUARDRAIL FLARED TERMINAL*** |
| 19 | 2 | EACH | BEAM GUARDRAIL ANCHOR TYPE 1**** |
| 20 | LUMP SUM | L.S. | MISCELLANEOUS TRIMMING AND CLEANUP |
| 21 | LUMP SUM | L.S. | SPCC PLAN |

STRUCTURE NOTES

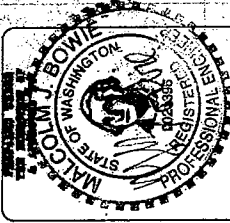
NOTE: THE FIRST NUMBER OF THE "CODE" REFERS TO THE SHEET NUMBER OF THE CONTRACT DRAWING. THE SECOND NUMBER REFERS TO THE PARTICULAR STRUCTURE FOUND ON THE PARTICULAR SHEET.

| STATION | Plain Steel Pipe | 48inch Dia. Trunk | Quarry Spalls | Structure Excavation | Concrete Class 3000 | Rebar No. 4 | GENERAL NOTES |
|---------|------------------|-------------------|---------------|----------------------|---------------------|-------------|-------------------------------------------------------------------------------------------------------------------------------------------------------------------------------------------------------------|
| 4+57 | 250 | | 12 | 335 | 5.0 | 182 | 1. Field Cut Bevel Ends 2.5:1 to match slopes of headwalls 2. Concrete Headwall on Inlet & Outlet (See Standard Plan B-75.20-00) 3. Place Quarry Spalls on Inlet and Outlet Slope. (See Detail Sheet) |
| | | | | | | | |

*** WITH SRT OPTION SEE STANDARD PLAN C-49 and C-2, Case 2
**** WITH FLEAT OPTION (NON FLARED) SEE STANDARD PLAN C-2, C-4B, AND C-2 Case 3



WISER PARKWAY
AT CROSSING
OF BNSF RAILROAD
CE 1918 CEP

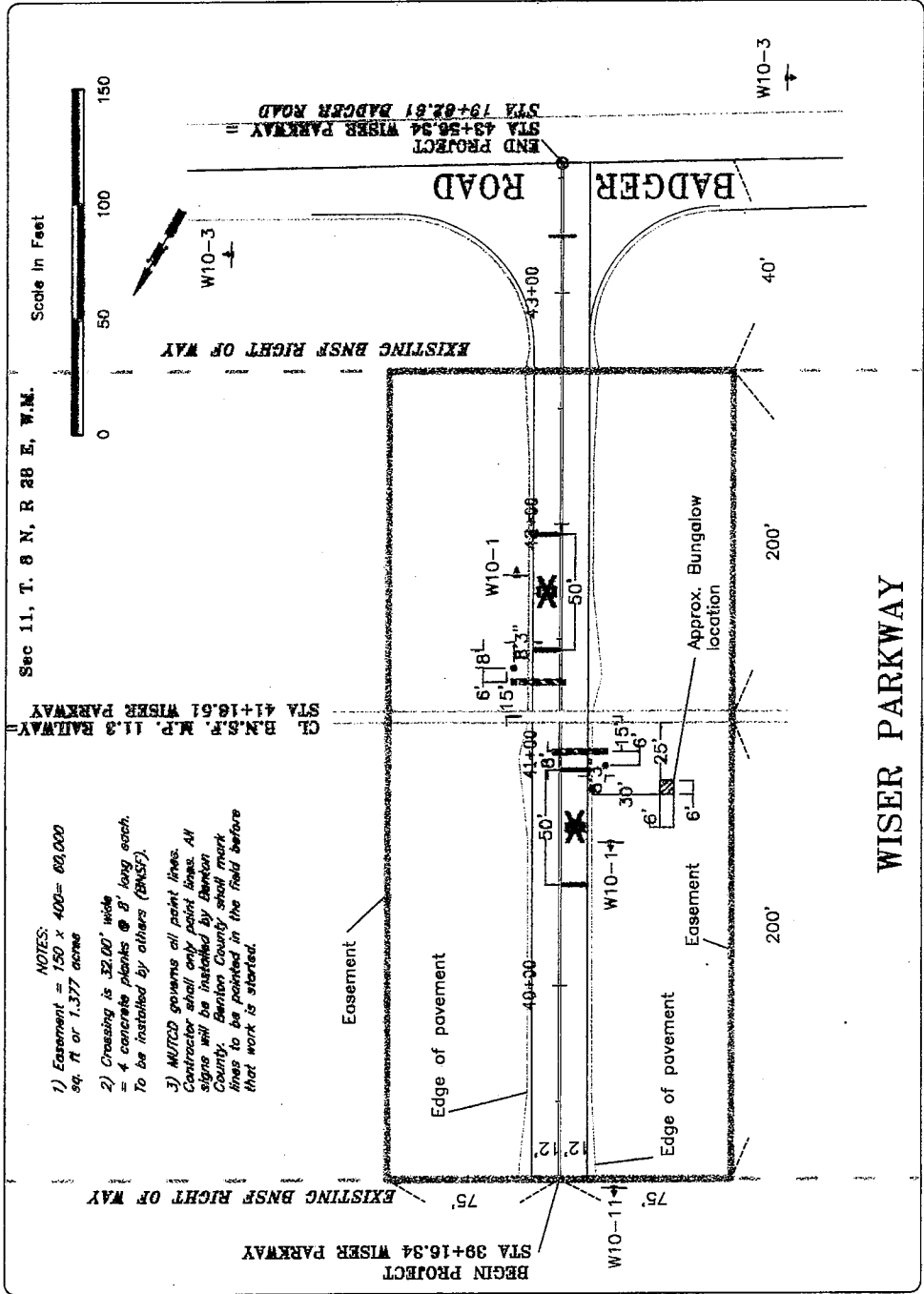


DATE: 10-21-09
SCALE: AS SHOWN
SHEET NO: 3 OF 6

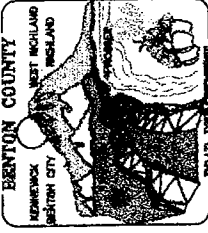
| | |
|-----------|----------|
| DATE | 10-21-09 |
| SCALE | AS SHOWN |
| SHEET NO. | 3 OF 6 |

PAYMENT MARKING PLAN

SHEET 3 OF 6



- NOTES:
- 1) Easement = 150 x 400 = 60,000 sq. ft. or 1.377 acres
 - 2) Crossing is 32.00' wide = 4 concrete planks @ 8' long each. To be installed by others (BMSF).
 - 3) MUTCD governs all paint lines. Contractor shall only paint lines. All signs will be installed by Benton County. Benton County shall mark lines to be painted in the field before that work is started.



WISER PARKWAY
BINSF RR CROSSING
CR 1916 CRP



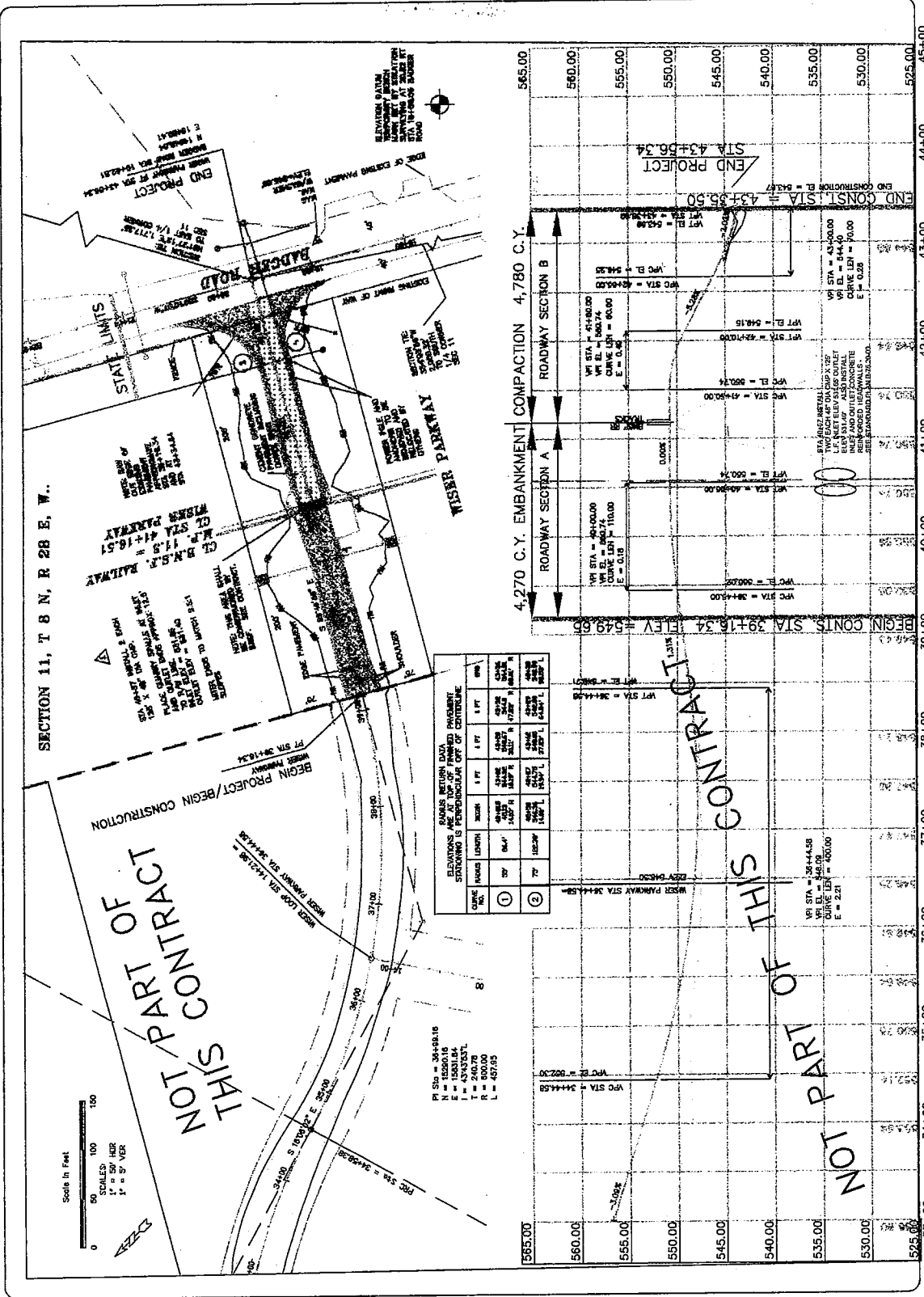
REVISIONS: 03-31-10
DATE: 12-21-09

CALL FOR TYPING DATE
1-800-487-4685

DATE: 09/28/09
SCALE: SEE BAR SCALE
REVISIONS: 12/20/09

PLAN & PROFILE

SHEET 4 OF 6



SECTION 11, T 8 N, R 28 E, W.

THIS IS NOT PART OF THIS CONTRACT

THIS CONTRACT

THIS IS NOT PART OF THIS CONTRACT

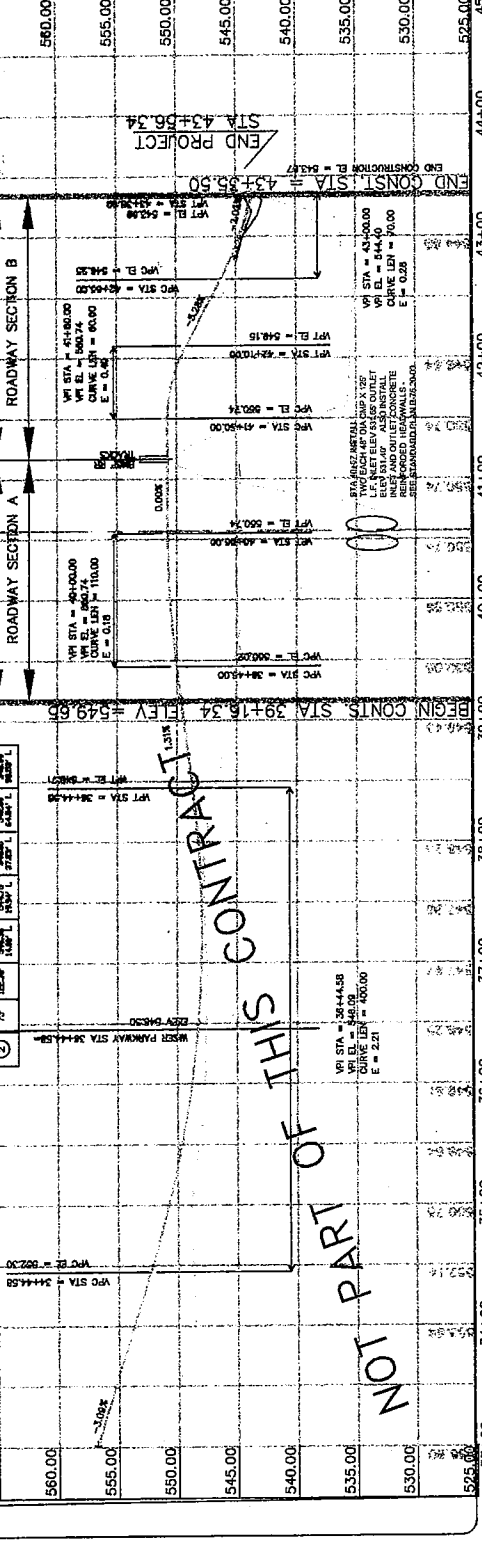
STATIONING IS PERPENDICULAR OFF OF CENTERLINE

| CHAIN | MARK | STATION | OFFSET | MARK | STATION | OFFSET |
|-------|------|---------|--------|------|---------|--------|
| 1 | 20' | 354+00 | 10' | 20' | 354+00 | 10' |
| 2 | 40' | 354+00 | 20' | 40' | 354+00 | 20' |
| 3 | 60' | 354+00 | 30' | 60' | 354+00 | 30' |
| 4 | 80' | 354+00 | 40' | 80' | 354+00 | 40' |
| 5 | 100' | 354+00 | 50' | 100' | 354+00 | 50' |
| 6 | 120' | 354+00 | 60' | 120' | 354+00 | 60' |
| 7 | 140' | 354+00 | 70' | 140' | 354+00 | 70' |
| 8 | 160' | 354+00 | 80' | 160' | 354+00 | 80' |
| 9 | 180' | 354+00 | 90' | 180' | 354+00 | 90' |
| 10 | 200' | 354+00 | 100' | 200' | 354+00 | 100' |

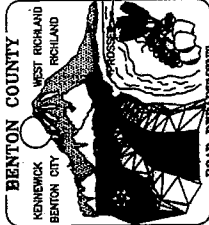
Scale in Feet
0 50 100
SCALE: 1" = 20' VERT
1" = 50' HORIZ

PI STA = 364+82.16
H = 1530.16
E = 1530.16
T = 240.00
R = 500.00
L = 457.95

4,270 C.Y. EMBANKMENT COMPACTION 4,780 C.Y.

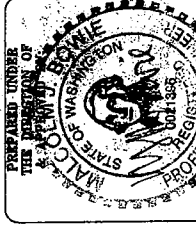


NOT PART OF THIS CONTRACT



ROAD DEPARTMENT
WISER PARKWAY
AT BNSF RAILROAD

CE 1918 CRP



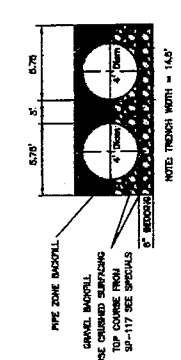
DATE: **12-7-09**
BENTON COUNTY
ENGINEER

CALL FOR WORKING DRAWINGS
 1-800-434-6865
 509-848-4242
 ALL UNDERGROUND UTILITIES AND STRUCTURES ARE NOT SHOWN. THE LOCATION OF THESE UTILITIES AND STRUCTURES IS THE RESPONSIBILITY OF THE CONTRACTOR TO FIELD VERIFY WITH THE BENTON COUNTY ENGINEERING DEPARTMENT FOR RESOLUTION OF CONFLICTS.

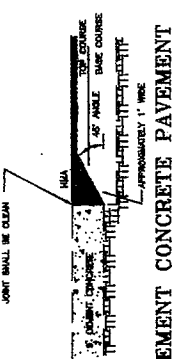
| | |
|------------|------------|
| DRWN: | JSS |
| SCALE: | NONE |
| DATE: | 09/29/2009 |
| REVISIONS: | 12/30/2009 |

DETAIL SHEET

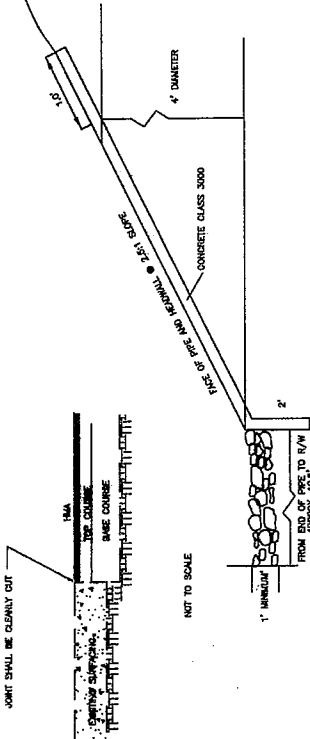
SHEET 5 OF 6



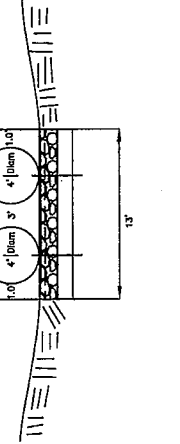
PIPE ZONE BEDDING AND BACKFILL
 NOTE: TRENCH WIDTH = 14.5'
 SEE MOST STANDARD PLAN 8-5430-00 FOR PIPE ZONE BEDDING AND BACKFILL.
 NOT TO SCALE.



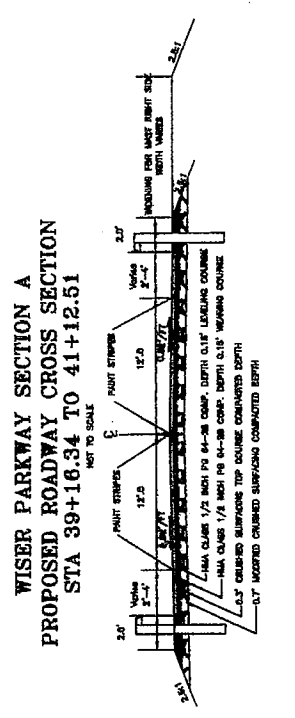
CEMENT CONCRETE PAVEMENT /HMA JOINT
 NOTE: THE JOINT SHALL NOT BE USED ALONG THE RAILROAD. JOINT SHALL BE CLEAN CUT.
 JOINT SHALL BE CLEAN CUT.
 NOT TO SCALE.



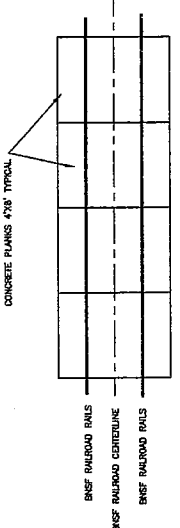
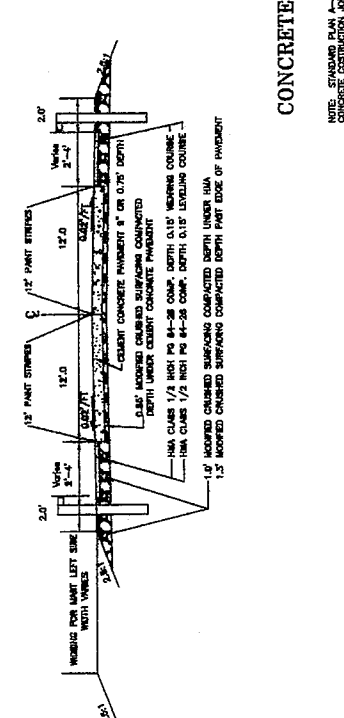
CONCRETE CONSTRUCTION JOINT
 NOTE: STANDARD PLAN 4-4010-00 SHOWS DETAILS FOR THE CONCRETE CONSTRUCTION JOINT.
 NOT TO SCALE.



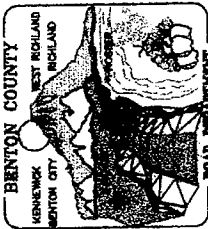
QUARRY SPALLS INLET AND OUTLET
 NOT TO SCALE.



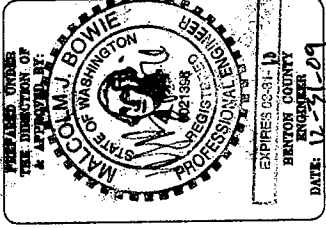
WISSER PARKWAY SECTION B
PROPOSED ROADWAY CROSS SECTION
STA 41+20.51 TO 43+34.84
 NOT TO SCALE



RAILROAD CROSSING TO BE INSTALLED BY OTHERS
 NOT TO SCALE.



WISER PARKWAY
AT BNSF RAILROAD
CE 1918 CRP



APPROVED UNDER THE DIRECTION OF
A LICENSED PROFESSIONAL ENGINEER
DATE: 12-31-09
BENTON COUNTY ENGINEER

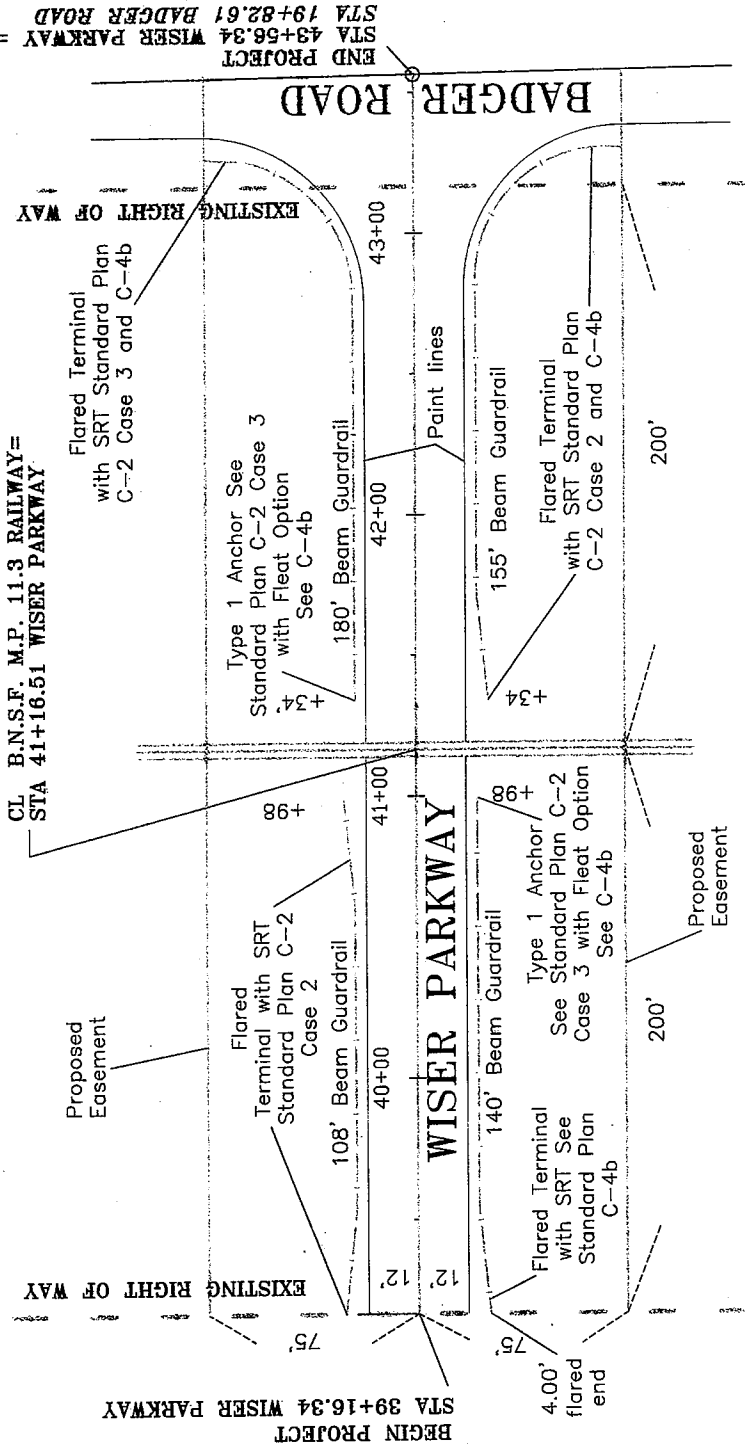
| | |
|-----------|--------------|
| DR/N: | L.S.S. |
| DATE: | 09/28/2009 |
| SCALE: | NOT TO SCALE |
| REVISION: | 12/30/2009 |

GUARDRAIL
DETAIL

SHEET 6 OF 6

Sec 11, T. 8 N, R 28 E, W.M.

NOTES: Before ordering the guardrail, lengths shall be verified in the field by the Engineer.



BEGIN PROJECT
STA 39+16.34 WISER PARKWAY

END PROJECT
STA 43+58.34 WISER PARKWAY =
STA 19+82.61 BADGER ROAD