

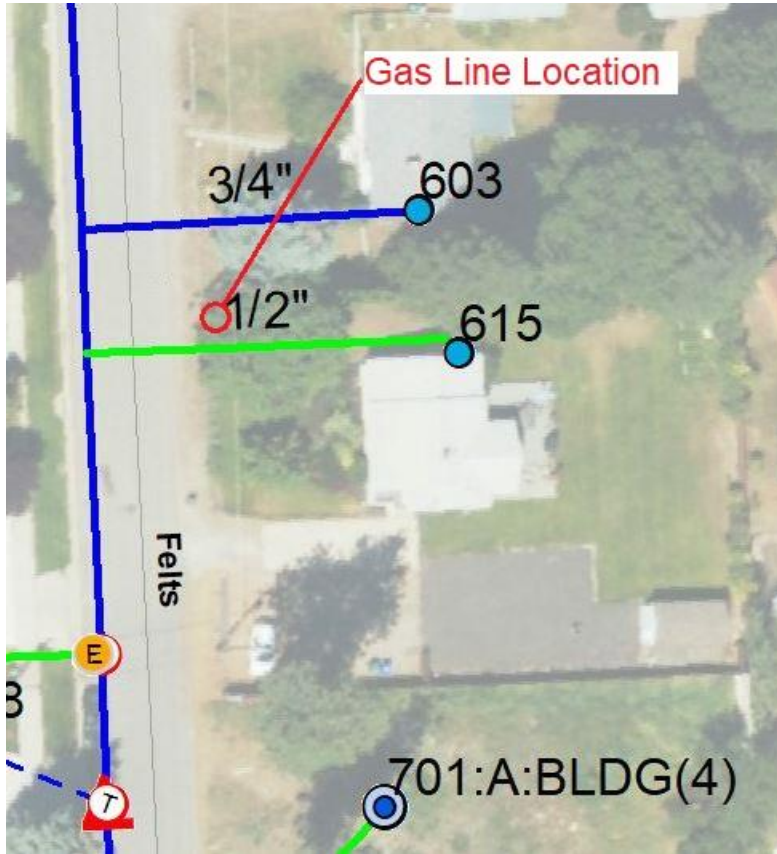


M&L Construction vs Avista
Case 24-114
616 S Felts Rd Spokane Valley Wa

Avista Supporting Documentation Narrative

M&L Construction requested locate ticket 24517056 on December 18, 2024, to install TDS fiber on the east side of S Felts Rd from the south side of 603 to the north side of 701 in Spokane Valley. The Work to Begin date was December 23, 2024. ELM addressed the locate promptly, locating a gas service to 603 and an electric primary at the south end of the dig area. 615 S Felts had an unlocatable gas service that crossed the dig area. ELM tried locating from 615, 616-618 (to the south of 615), and 603 (to the north of 615) and was unable to get a reliable signal through multiple hookup points and locate frequencies. ELM marked the line according to Avista mapping on December 19, 2024. ELM notified Avista personnel in the Spokane Gas Construction office immediately after marking the line and was able to receive a service card with the best reasonably available measurements indicating the location of the gas service on the same day. ELM used the provided measurement to mark the recorded location of the service, 554 ft north of the center line of 8th Ave, and blacked out the previously marked location. The ticket was completed on December 19, 2024.

Avista Gas Prints and Gas Line Location Sketch



Original Locate Marks

Lat: 47.651259, Long: -117.2668187, H: North



Ticket: 24517056.0 Timestamp:12/19/2024 9:51:21 AM

Service Record Measure and Mark (Blackout previous marks)

Lat: 47.6512496, Long: -117.2668317, H: South



Ticket: 24517056.0 Timestamp:12/19/2024 11:48:43 AM

Sketch of mark, gas, and meter location

Lat: 47.6512496, Long: -117.2668317, H: South



Ticket: 24517056.0 Timestamp:12/19/2024 11:48:43 AM