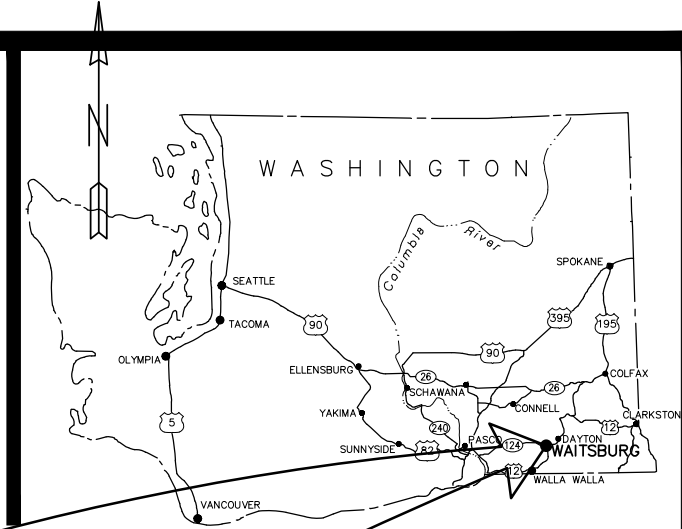


CITY OF WAITSBURG, WA.

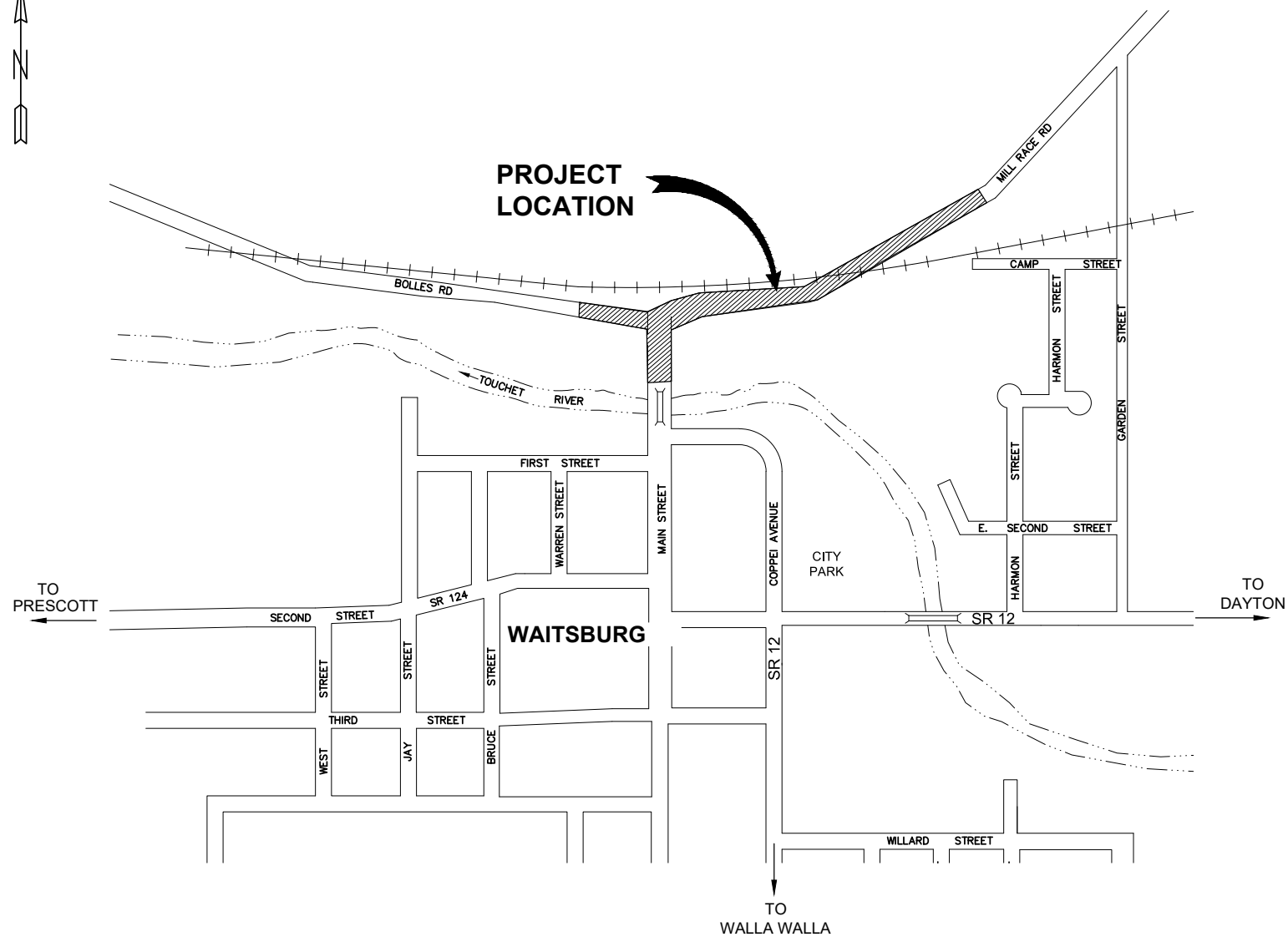
MILL RACE ROAD GRADE CROSSING 2020

FED. AID PROJECT NO. XXX
CONTRACT NO. XXX



INDEX

SHEET NO.		PAGE NO.
G-001	COVER	1
G-002	LEGEND, GENERAL NOTES, SURVEY	2
G-101	TRAFFIC CONTROL PLAN	3
D-101	SITE PREPARATION PLAN	4
C-101	PLAN AND PROFILE A-LINE	5
C-102	PLAN AND PROFILE A-LINE	6
C-103	PLAN AND PROFILE A-LINE	7
C-104	PLAN B,C,D,& E LINES	8
C-105	PROFILE B,C,D, & E LINES	9
C-301	TYPICAL SECTIONS	10
W-101	SIGNING AND STRIPING PLAN	11



VICINITY MAP
NTS

CITY COUNCIL

- Martin Dunn - Mayor
- David Paxton
- Kevin House
- Jim Romine
- Karl Newell
- Karen Gregutt

CITY OFFICIALS

- Randy Hinchliffe, City Administrator
- Jim Lynch, Public Works Director

SHEET

G-001

1 OF 11



Know what's below.
Call before you dig.



214 E. Birch - Walla Walla, WA 99362 Ph: (509)529-9260 Fax: (509)529-8102
LA GRANDE, OR WALLA WALLA, WA. REDMOND, OR. HERMISTON, OR.

LEGEND

WATER

	EXISTING	PROPOSED
WATER LINE	— W —	6" W
WATER METER	⊕	⊕
FIRE HYDRANT	⊕	⊕
DRAIN LINE	— D —	

SEWER/STORM DRAIN

	EXISTING	PROPOSED
STORM DRAIN LINE	— SD —	12" SD
STORM DRAIN MANHOLE	⊕	⊕
STORM DRAIN CATCH BASIN	□	■

MISC. UTILITIES

	EXISTING	PROPOSED
BURIED POWER	— P —	P
OVERHEAD POWER	— OHP —	OHP
BURIED TELEPHONE	— UT —	UT
FIBER OPTIC	— FO —	FO
UTILITY POLE	⊕	⊕
UTILITY POLE ANCHOR	←	←
PAD TRANSFORMER	⊕	⊕
POWER VAULT	⊕	⊕
TELEPHONE RISER	⊕	⊕
TELEPHONE VAULT	⊕	⊕
STREET LIGHT	⊕	⊕

SURVEY

	EXISTING	PROPOSED
MONUMENT (IN CASE)	⊕	⊕
MONUMENT (SURFACE)	⊕	⊕
CENTERLINE	—	—
RIGHT-OF-WAY	—	—
PROPERTY LINE	—	—
EASEMENT LINE	—	—
SECTION LINE	—	—

RESTORATION

	EXISTING	PROPOSED
ASPHALT HATCH	[Pattern]	[Pattern]
GRAVEL HATCH	[Pattern]	[Pattern]
CONCRETE HATCH	[Pattern]	[Pattern]
GRASS/SOD HATCH	[Pattern]	[Pattern]

SURFACE FEATURES

	EXISTING	PROPOSED
INDEX CONTOUR	— 740 —	— 740 —
INTERMEDIATE CONTOUR	—	—
CREEK/DITCH CENTERLINE	—	—
SIDEWALK CURB & GUTTER	[Pattern]	[Pattern]
DRIVEWAY/ACCESS RAMP W/WARNING STRIP	[Pattern]	[Pattern]
EDGE ASPHALT/CONCRETE	—	—
EDGE GRAVEL	—	—
RAILROAD	—	—
DAYLIGHT/CATCH POINT	—	—
TREE, CONIFER	[Symbol]	[Symbol]
TREE, DECIDUOUS	[Symbol]	[Symbol]
SIGN	[Symbol]	[Symbol]

TRAFFIC CONTROL

	EXISTING	PROPOSED
TYPICAL TRAFFIC CONTROL ARROWS	[Arrows]	[Arrows]
TYPICAL TRAFFIC CONTROL SYMBOLS	[Symbols]	[Symbols]
TYPICAL TRAFFIC DIVIDER LINES	[Lines]	[Lines]
FOG LINE	[Line]	[Line]

SECTION DESIGNATION: **A**
SHEET WHERE SECTION IS SHOWN: **2**

DETAIL NUMBER: **1**
PAGE WHERE DETAIL IS FROM: **1**

SECTION NUMBER: **A**
PAGE WHERE SECTION IS FROM: **1**

GENERAL CONSTRUCTION NOTES

- THESE PLANS SPECIFICATIONS AND REFERENCED DOCUMENTS SHALL BE USED TO CONSTRUCT THE IMPROVEMENTS SHOWN. REFERENCED DOCUMENTS INCLUDE THE WASHINGTON STATE DEPARTMENT OF TRANSPORTATION (WSDOT) STANDARD SPECIFICATIONS FOR ROAD, BRIDGE AND MUNICIPAL CONSTRUCTION (2020 EDITION), WSDOT STANDARD PLANS AND THE MANUAL ON UNIFORM TRAFFIC CONTROL DEVICES (MUTCD).
- THE CONTRACTOR SHALL BE RESPONSIBLE FOR ALL VEHICULAR AND PEDESTRIAN TRAFFIC CONTROL. WSDOT STANDARD PLANS MAY BE USED AS A GUIDE FOR TRAFFIC CONTROL. ALL SIGNING SHALL COMPLY WITH THE MUTCD AND ALL TRAFFIC OPERATIONS MUST BE ACCEPTABLE TO WALLA WALLA COUNTY AND THE CITY OF WAITSBURG.
- ALL EXISTING UTILITIES SHOWN ON THE PLANS ARE SHOWN WITH AS MUCH ACCURACY AS POSSIBLE, BASED ON AVAILABLE INFORMATION. SOME DISCREPANCIES AND OMISSIONS IN LOCATION, TYPE, AND SIZE SHOULD BE EXPECTED TO OCCUR. THE CONTRACTOR SHALL BE RESPONSIBLE FOR LOCATING AND PROTECTING ALL EXISTING UTILITIES IN AND AROUND THE WORK AREAS. BOTH PRIVATE AND PUBLIC POWER, WATER, IRRIGATION, TELEPHONE, GAS, CABLE, AND WASTEWATER SHALL BE INCLUDED. ANY DISCREPANCIES BETWEEN THE DESIGN SHEETS AND EXISTING CONDITIONS SHALL BE REPORTED TO THE ENGINEER.
- ANY OBSTRUCTIONS ENCOUNTERED THAT MAY NOT BE SHOWN ON THE PLANS SHALL BE IMMEDIATELY BROUGHT TO THE ATTENTION OF THE ENGINEER. ITEMS VISIBLE IN THE FIELD ARE THE CONTRACTOR'S RESPONSIBILITY, EVEN IF NOT SHOWN ON THE PLANS.
- SAW CUT ALL EXISTING ASPHALT AND CONCRETE WHERE JOINTS WITH NEW CONSTRUCTION WILL BE REQUIRED.
- UNLESS OTHERWISE SHOWN, HYDROSEED ALL SOIL AREAS DISTURBED FROM CONSTRUCTION OPERATIONS.
- KNOWN SURVEY MONUMENTS AND CONTROL POINTS ARE SHOWN ON THE PLANS. THE CONTRACTOR SHALL BE RESPONSIBLE FOR PRESERVING, PROTECTING, AND IF NECESSARY, RESETTING MONUMENTS. THE CONTRACTOR SHALL BE REQUIRED TO RETAIN A WASHINGTON STATE LICENSED SURVEYOR TO DIRECT THE WORK REQUIRED TO RESET MONUMENTS AND PERMANENT BENCHMARKS.
- THE CONTRACTOR SHALL MAINTAIN AN ACCURATE AND UPDATED SET OF RECORD DRAWINGS THAT INCORPORATE ANY CHANGES OR ADDITIONS ENCOUNTERED. THESE SHALL BE DELIVERED TO THE ENGINEER UPON COMPLETION OF THE WORK AND WILL BE USED AS A BASIS FOR PREPARING A SET OF RECORD DRAWINGS FOR THE CITY OF WAITSBURG. FINAL PAYMENT WILL NOT BE MADE UNTIL ACCEPTABLE RECORD DRAWINGS HAVE BEEN PROVIDED.

VERTICAL DATUM

XX

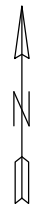
HORIZONTAL DATUM

XX

CONTROL POINT DATA				
NO.	NORTHING	EASTING	ELEVATION	DESCRIPTION
104	351475.39	2233355.46	1261.54	APA-RPC
109	351576.60	2233210.93	1271.93	APA-RPC
110	351729.76	2234058.98	1273.48	APA-NAIL
405	351010.21	2233341.89	1252.37	MON-CASE
511	351180.18	2233297.40	1260.19	APA-NAIL

NOTE:
THE CONTRACTOR SHALL PROTECT AND/OR REFERENCE CONTROL POINTS WITHIN AREAS TO BE DEMOLISHED.

DESIGNED BY E. ZITTERKOPF	DATE July 22, 2020	<p>PRELIMINARY FOR REVIEW ONLY NOT FOR CONSTRUCTION FED AID NO: XXXX</p>		<p>CITY OF WAITSBURG, WA MILL RACE ROAD GRADE CROSSING 2020</p>	SHEET
DRAWN BY E. ZITTERKOPF	ACAD FILE: 366-115-060-G-002.DWG				<p>G-002</p>
REVIEWED BY A. SCHMIDTGALL	COPYRIGHT 2020 BY ANDERSON PERRY & ASSOC., INC.				



TRAFFIC CONTROL NOTES

1. ALL REGULATORY TRAFFIC CONTROL DEVICES SHALL BE IN COMPLIANCE WITH THE LATEST EDITION OF THE MUTCD AND ALL TRAFFIC OPERATIONS MUST BE APPROVED BY THE AGENCY.
2. ALL TRAFFIC CONTROL SIGNS AND DEVICES SHALL BE IN NEW OR LIKE NEW CONDITION.
3. TYPE III BARRICADES SHALL HAVE REFLECTORIZED SHEETING ATTACHED. PAINTED STRIPING WILL NOT BE ALLOWED.
4. TWO FLASHING WARNING LIGHTS SHALL BE USED TO MARK EACH BARRICADE AND CONCRETE BARRIER AT NIGHT.
5. LOCATION OF ALL SIGNS SHALL BE AS APPROVED BY THE ENGINEER.
6. REMOVE, COVER, OR RELOCATE SIGNS AS REQUIRED DURING VARIOUS CONSTRUCTION STAGES.
7. ACCESS SHALL BE PROVIDED AT ALL TIMES TO EMERGENCY VEHICLES AND PROPERTY OWNERS WITHIN PROJECT LIMITS.
8. UNLESS OTHERWISE NOTED, ALL SIGNS SHALL BE BLACK WITH ORANGE BACKGROUND.

LEGEND

TYPE III BARRICADE, SEE WSDOT STD PLAN K-80.20-00

SIGN SCHEDULE



①



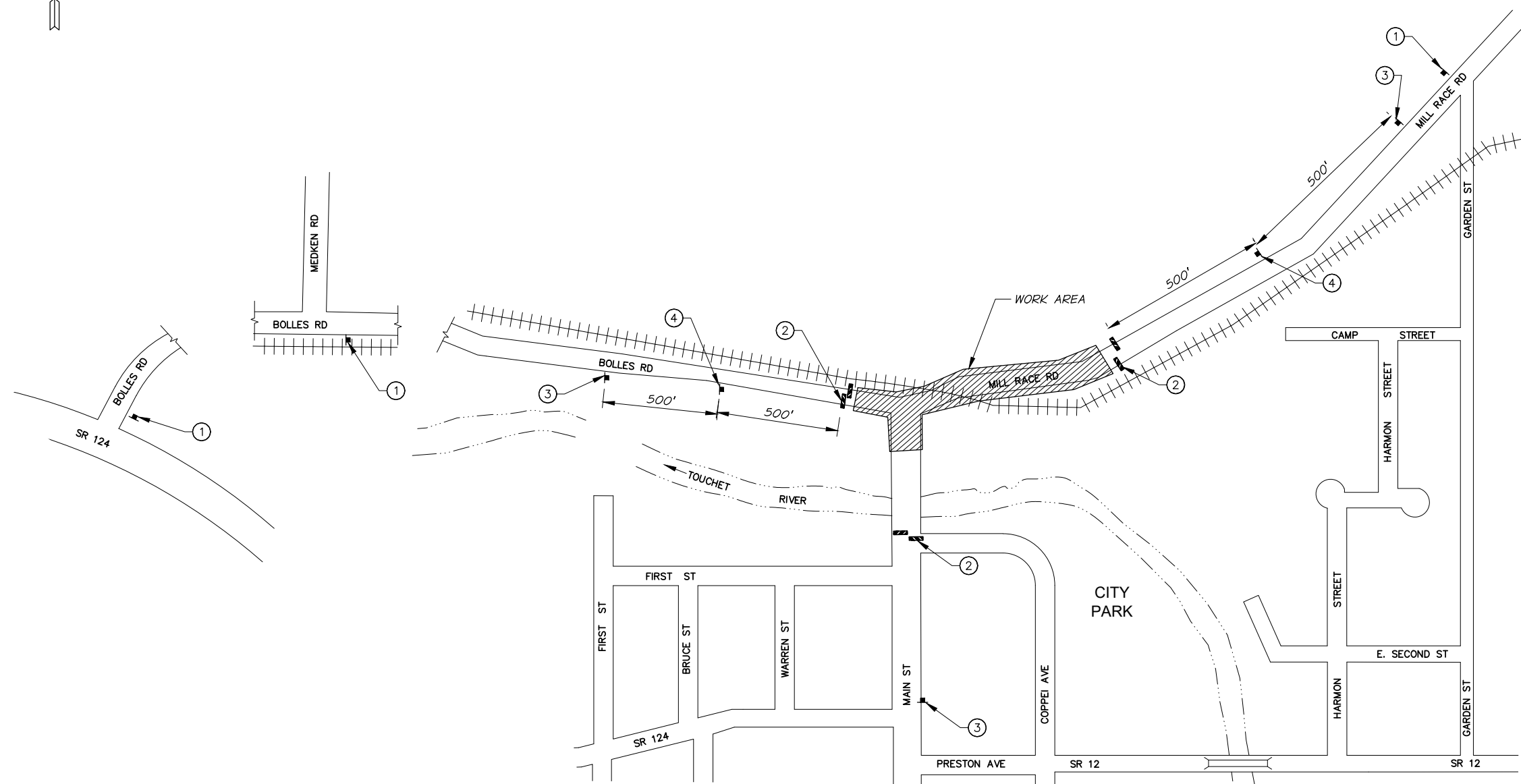
②



③



④



PLAN
NTS

DESIGNED BY E. ZITTERKOPF	JOB NUMBER 366-115	DATE July 22, 2020
DRAWN BY E. ZITTERKOPF	ACAD FILE: 366-115-060-G-101.DWG	
REVIEWED BY A. SCHMIDTGALL	COPYRIGHT 2020 BY ANDERSON PERRY & ASSOC., INC.	

**PRELIMINARY
FOR REVIEW ONLY
NOT FOR CONSTRUCTION**

FED AID NO: XXXX



CITY OF WAITSBURG, WA
MILL RACE ROAD GRADE CROSSING
2020

TRAFFIC CONTROL PLAN

SHEET

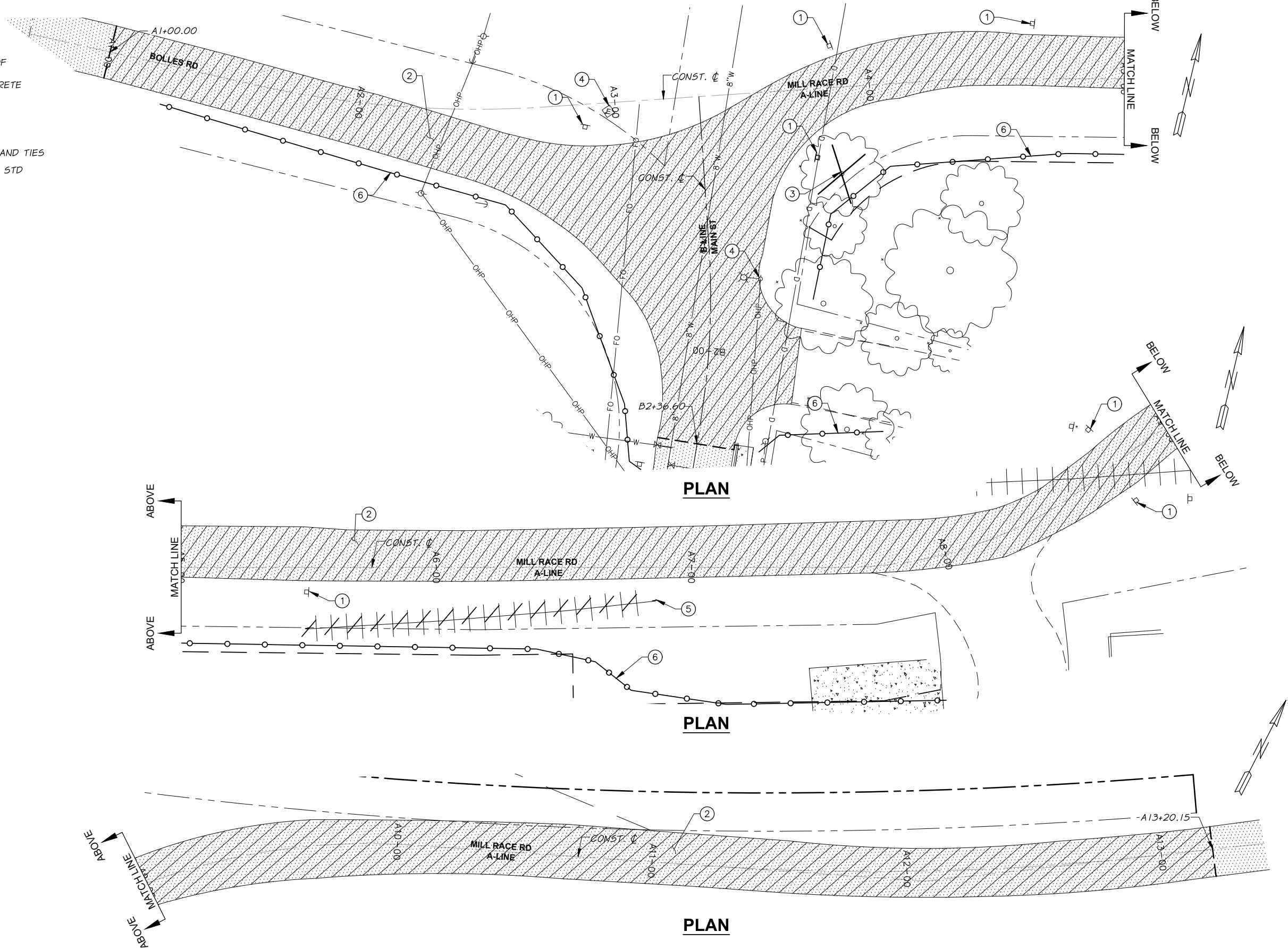
G-101

3 OF 11

R:\Clients\Waitsburg\366-115 Mill Race Rd\060 Design\366-115-060-G-101.dwg, 7/22/2020 11:26:11 AM, _AutoCAD.PDF (General Documentation).pc3

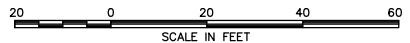
DEMOLITION NOTES

- ① SALVAGE EXISTING SIGN AND DELIVER TO CITY OF WAITSBURG PUBLIC WORKS SHOP.
- ② REMOVE OR PULVERIZE EXISTING ASPHALT CONCRETE PAVEMENT
- ③ REMOVE EXISTING TREE
- ④ UTILITY TO BE RELOCATED BY OTHERS
- ⑤ REMOVE EXISTING ABANDONED RAILROAD TRACK AND TIES
- ⑥ INSTALL HIGH VISIBILITY SILT FENCE. SEE WSDOT STD I-30.17-01.



REVISION	BY	DATE
DESIGNED BY E. ZITTERKOPF		
DRAWN BY E. ZITTERKOPF		
REVIEWED BY A. SCHMIDTGALL		

JOB NUMBER 366-115	DATE July 22, 2020
ACAD FILE: 366-115-060-D-101.DWG	
COPYRIGHT 2020 BY ANDERSON PERRY & ASSOC., INC.	



**PRELIMINARY
FOR REVIEW ONLY
NOT FOR CONSTRUCTION**

FED AID NO: XXXX



CITY OF WAITSBURG, WA
MILL RACE ROAD GRADE CROSSING
2020

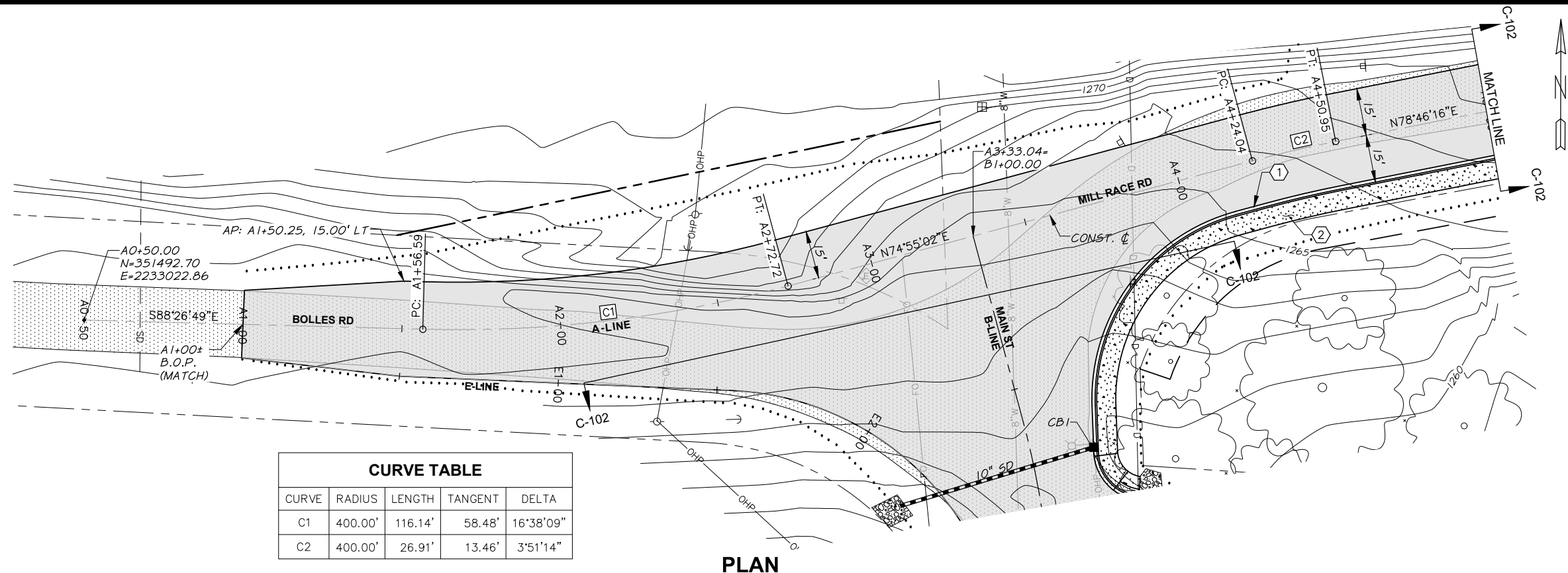
SITE PREPARATION PLAN

SHEET
D-101
4 OF 11

R:\Clients\Waitsburg\366-115-Mill Race Rd\060 Design\366-115-060-D-101.dwg, 7/22/2020 11:26:25 AM, _AutoCAD PDF (General Documentation).pc3

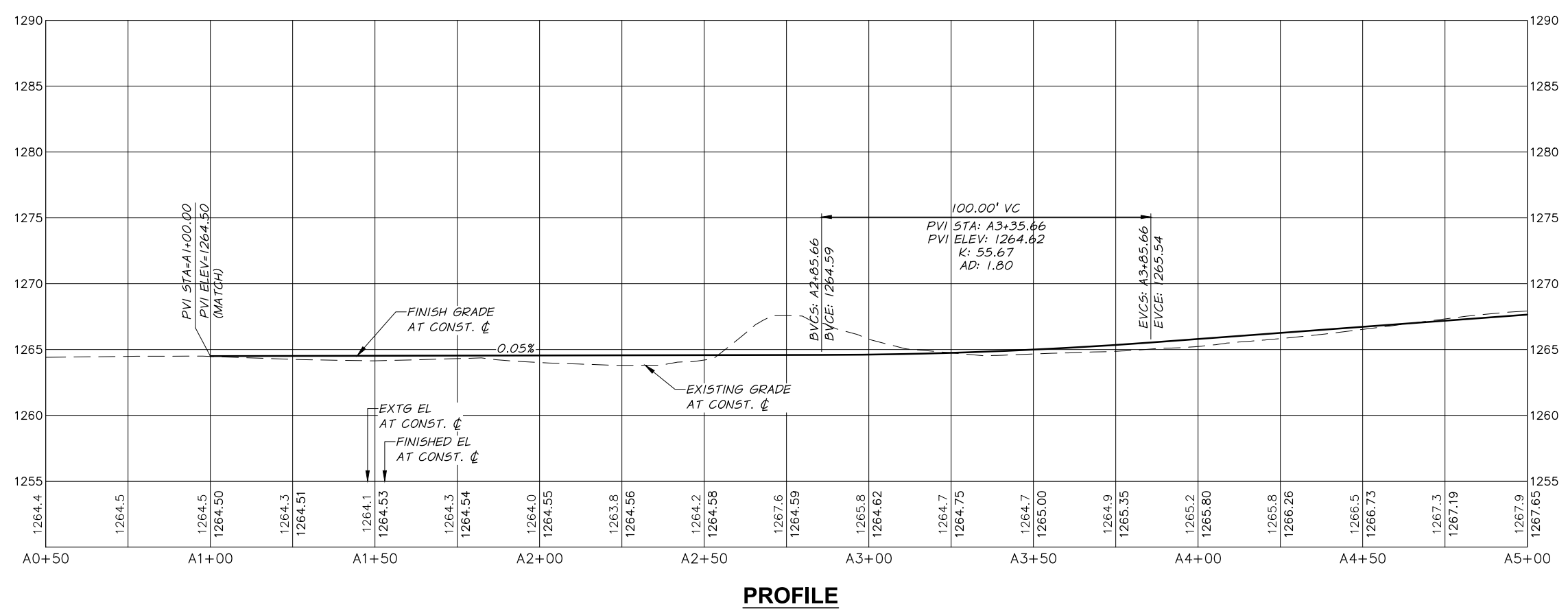
CONSTRUCTION NOTES

- ① CEMENT CONCRETE TRAFFIC CURB AND GUTTER, SEE WSDOT STD PLAN F-10.12-03
- ② CEMENT CONCRETE SIDEWALK, SEE WSDOT STD PLAN F-30.10-03
- ③ TYPE PARALLEL B CURB RAMP, SEE WSDOT STD PLAN F-40.12-03
- ④ TYPE SINGLE DIRECTION A CURB RAMP, SEE WSDOT STD PLAN F-40.16-03
- ⑤ CATCH BASIN TYPE II WITH DIRECTIONAL GRATE, SEE WSDOT STD PLAN B-5.40-02
- ⑥ QUARRY SPALL PAD 1' THICK OVER GEOTEXTILE FOR SEPARATION



CURVE TABLE				
CURVE	RADIUS	LENGTH	TANGENT	DELTA
C1	400.00'	116.14'	58.48'	16°38'09"
C2	400.00'	26.91'	13.46'	3°51'14"

PLAN



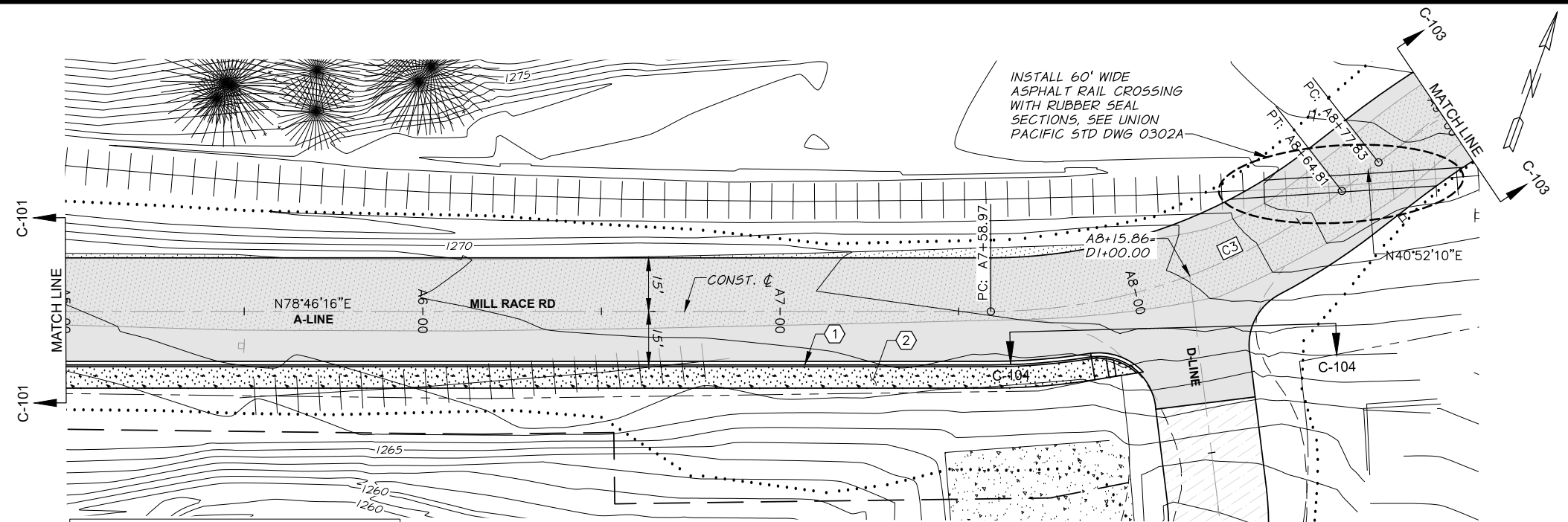
PROFILE

<table border="1" style="width: 100%; border-collapse: collapse;"> <tr> <th>REVISION</th> <th>BY</th> <th>DATE</th> </tr> <tr> <td> </td> <td> </td> <td> </td> </tr> </table>	REVISION	BY	DATE				<p>HORIZONTAL SCALE IN FEET VERTICAL SCALE IN FEET</p>	<p>PRELIMINARY FOR REVIEW ONLY NOT FOR CONSTRUCTION</p> <p>FED AID NO: XXXX</p>	<p>Anderson Perry & Associates, Inc. engineering • surveying • natural resources</p>	<p>CITY OF WAITSBURG, WA MILL RACE ROAD GRADE CROSSING 2020</p> <p>PLAN AND PROFILE A-LINE</p>	<p>SHEET</p> <p>C-101</p> <p>5 OF 11</p>
REVISION	BY	DATE									
DESIGNED BY E. ZITTERKOPF DRAWN BY E. ZITTERKOPF REVIEWED BY A. SCHMIDTGALL	JOB NUMBER 366-115 DATE July 22, 2020 ACAD FILE: 366-115-060-C-101.DWG COPYRIGHT 2020 BY ANDERSON PERRY & ASSOC., INC.										

R:\Clients\Waitsburg\366-115-060-C-101.dwg, 7/22/2020 11:26:39 AM, _AutoCAD PDF (General Documentation).pc3

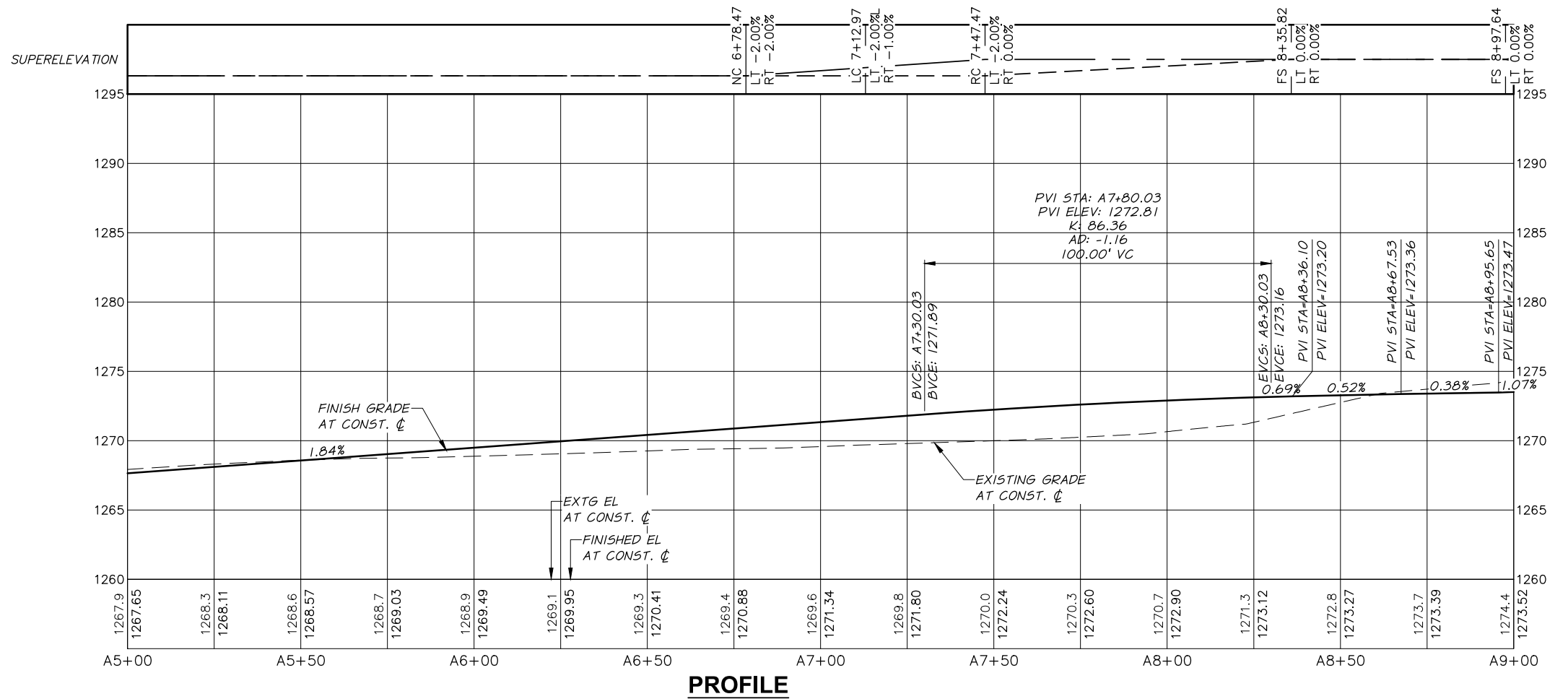
CONSTRUCTION NOTES

- ① CEMENT CONCRETE TRAFFIC CURB AND GUTTER, SEE WSDOT STD PLAN F-10.12-03
- ② CEMENT CONCRETE SIDEWALK, SEE WSDOT STD PLAN F-30.10-03
- ③ TYPE PARALLEL B CURB RAMP, SEE WSDOT STD PLAN F-40.12-03
- ④ TYPE SINGLE DIRECTION A CURB RAMP, SEE WSDOT STD PLAN F-40.16-03
- ⑤ CATCH BASIN TYPE 1L WITH DIRECTIONAL GRATE, SEE WSDOT STD PLAN B-5.40-02
- ⑥ QUARRY SPALL PAD 1' THICK OVER GEOTEXTILE FOR SEPARATION



CURVE TABLE				
CURVE	RADIUS	LENGTH	TANGENT	DELTA
C3	160.00'	105.84'	54.94'	37°54'06"

PLAN



PROFILE

REVISION	BY	DATE
DESIGNED BY E. ZITTERKOPF		
DRAWN BY E. ZITTERKOPF		
REVIEWED BY A. SCHMIDTGALL		

JOB NUMBER 366-115	DATE July 22, 2020
ACAD FILE: 366-115-060-C-102.DWG	
COPYRIGHT 2020 BY ANDERSON PERRY & ASSOC., INC.	

**PRELIMINARY
FOR REVIEW ONLY
NOT FOR CONSTRUCTION**

FED AID NO: XXXX

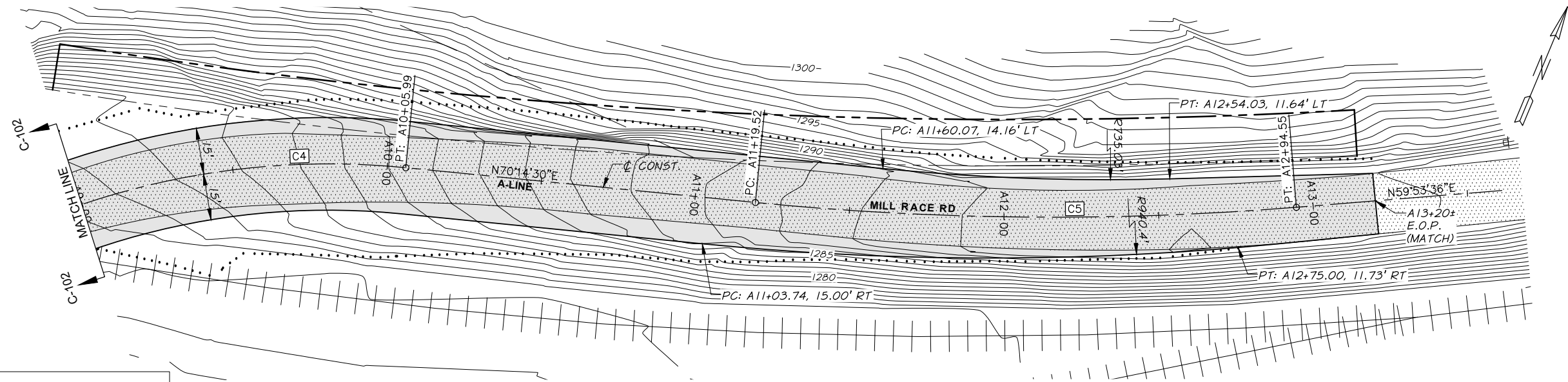


CITY OF WAITSBURG, WA
MILL RACE ROAD GRADE CROSSING
2020

PLAN AND PROFILE A-LINE

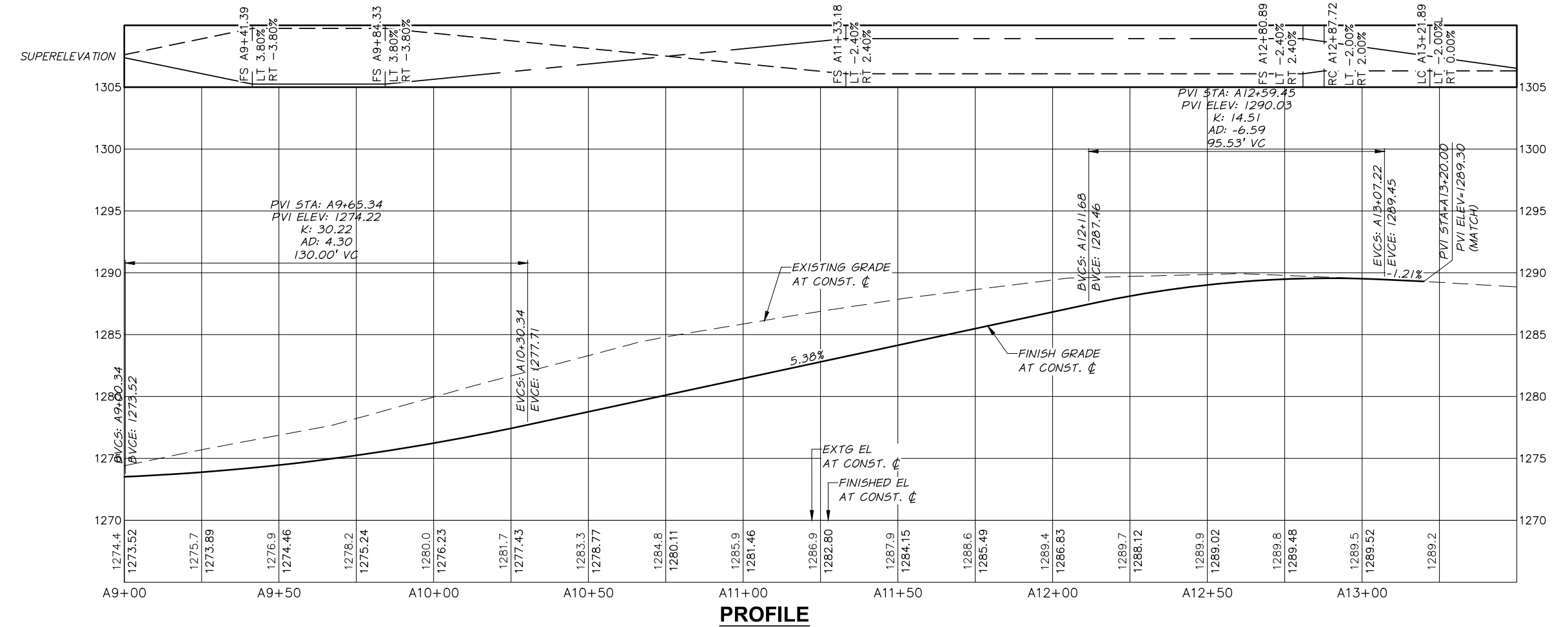
SHEET
C-102
6 OF 11

R:\Clients\Waitsburg\366-115 Mill Race Rd\060 Design\366-115-060-C-102.dwg, 7/22/2020 11:26:54 AM, AutoCAD PDF (General Documentation).pc3



CURVE TABLE				
CURVE	RADIUS	LENGTH	TANGENT	DELTA
C4	250.00'	128.16'	65.52'	29°22'19"
C5	969.11'	175.03'	87.76'	10°20'54"

PLAN

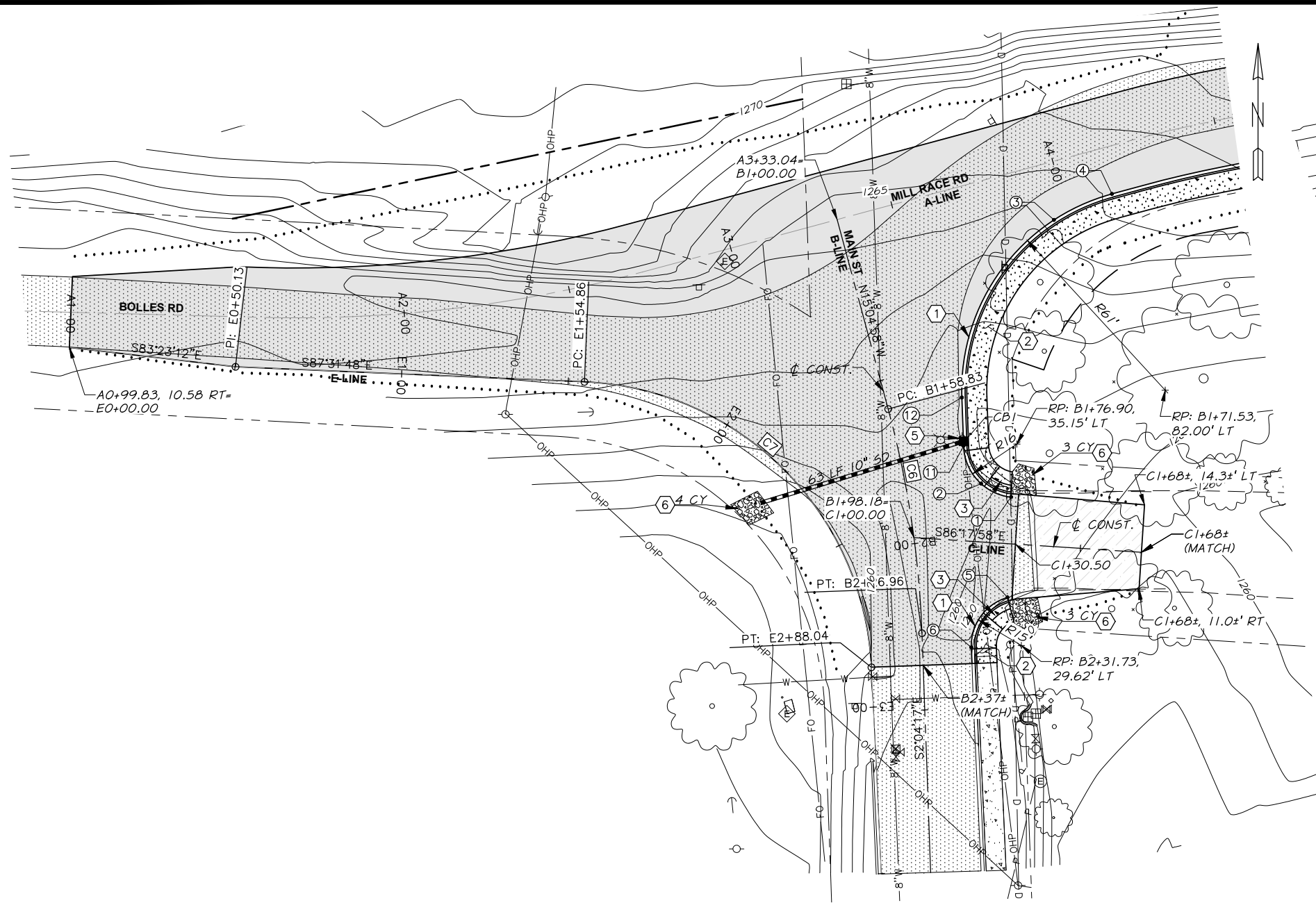


PROFILE

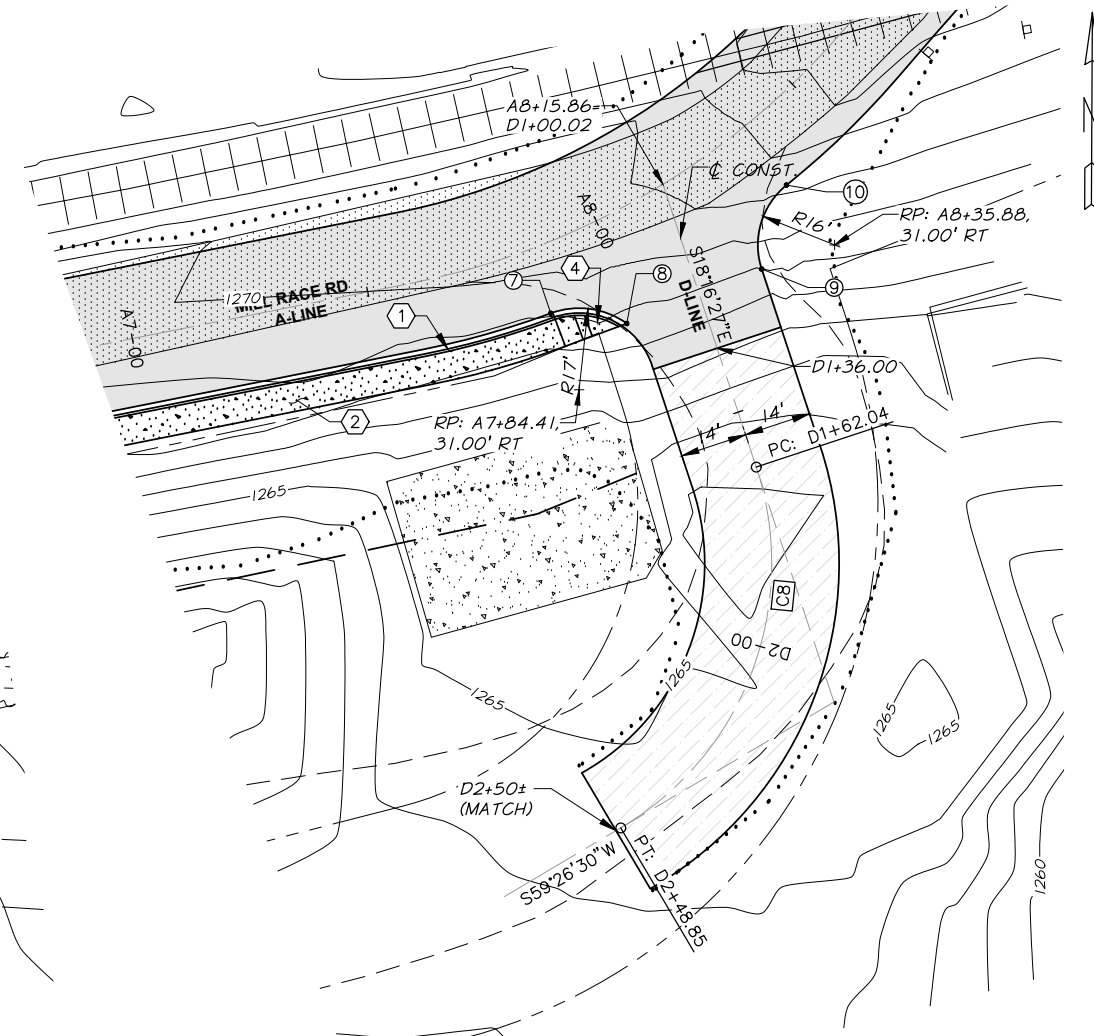
DESIGNED BY E. ZITTERKOPF DRAWN BY E. ZITTERKOPF REVIEWED BY A. SCHMIDTGALL		JOB NUMBER 366-115 ACAD FILE: 366-115-060-C-103.DWG DATE July 22, 2020 COPYRIGHT 2020 BY ANDERSON PERRY & ASSOC., INC.				<p>PRELIMINARY FOR REVIEW ONLY NOT FOR CONSTRUCTION</p> <p>FED AID NO: XXXX</p>		<p>CITY OF WAITSBURG, WA MILL RACE ROAD GRADE CROSSING 2020</p> <p>PLAN AND PROFILE A-LINE</p>		SHEET C-103 7 OF 11
---	--	---	--	--	--	--	--	---	--	----------------------------------

R:\Clients\Waitsburg\366-115-060-C-103.dwg, 7/22/2020 11:27:04 AM, AutoCAD PDF (General Documentation).pc3

R:\Clients\Waitsburg\366-115 Mill Race Rd\060 Design\366-115-060-C-104-105.dwg, 7/22/2020 11:27:16 AM, _AutoCAD PDF (General Documentation).pc3



PLAN



PLAN

CONSTRUCTION NOTES

- ① CEMENT CONCRETE TRAFFIC CURB AND GUTTER, SEE WSDOT STD PLAN F-10.12-03
- ② CEMENT CONCRETE SIDEWALK, SEE WSDOT STD PLAN F-30.10-03
- ③ TYPE PARALLEL B CURB RAMP, SEE WSDOT STD PLAN F-40.12-03
- ④ TYPE SINGLE DIRECTION A CURB RAMP, SEE WSDOT STD PLAN F-40.16-03
- ⑤ CATCH BASIN TYPE IL WITH DIRECTIONAL GRATE, SEE WSDOT STD PLAN B-5.40-02
- ⑥ QUARRY SPALL PAD 1' THICK OVER GEOTEXTILE FOR SEPARATION

CURVE	RADIUS	LENGTH	TANGENT	DELTA
C6	300.00'	68.13'	34.21'	13°00'41"
C7	90.00'	133.18'	82.16'	84°47'17"
C8	64.00'	86.81'	51.56'	77°42'57"

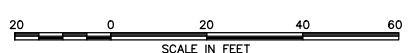
POINT #	DESCRIPTION	ELEVATION	STATION	OFFSET
1	LIP	1261.92	B1+90.72	30.58 LT
2	LIP	1262.10	B1+85.71	22.39 LT
3	LIP	1265.46	A3+95.77	17.01 RT
4	LIP, PT	1265.81	A4+14.59	14.00 RT
5	LIP	1261.72	B2+17.95	26.16 LT
6	LIP	1261.83	B2+31.78	14.62 LT
7	LIP	1272.83	A7+84.41	14.00 RT
8	LIP	1272.77	A7+96.81	22.05 RT
9	HMA	1272.66	A8+22.98	26.00 RT
10	HMA	1273.20	A8+35.88	15.00 RT
11	LIP, PC	1262.58	B1+74.40	19.38 LT
12	LIP, PT	1263.12	B1+61.08	22.24 LT

LEGEND

⑥ - FINISHED GRADE ELEVATION POINT

REVISION	BY	DATE

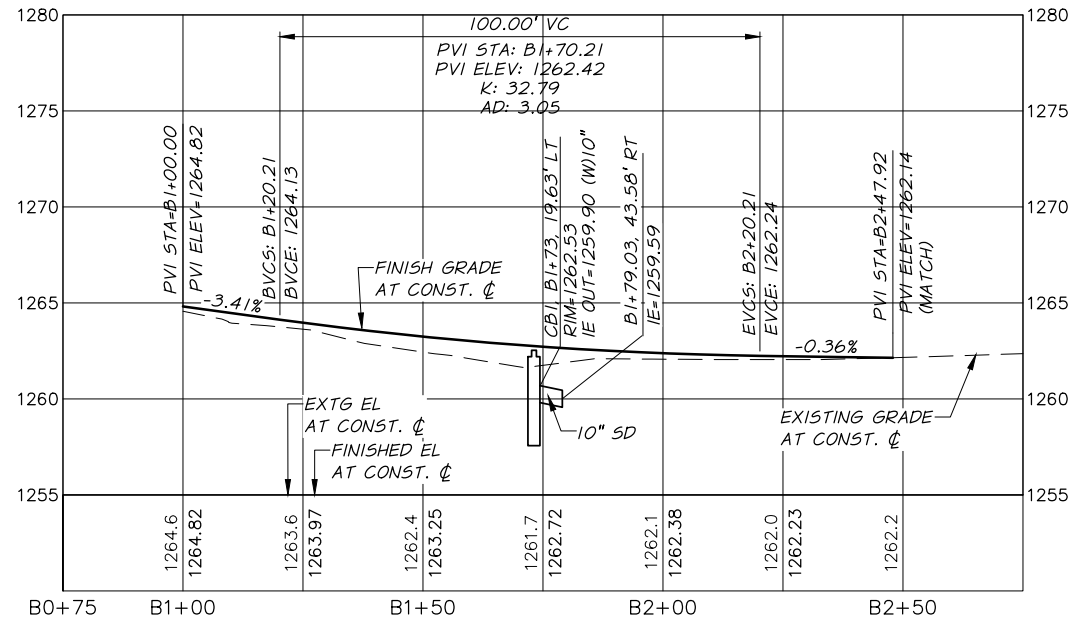
DESIGNED BY E. ZITTERKOPF	JOB NUMBER 366-115	DATE July 22, 2020
DRAWN BY E. ZITTERKOPF	ACAD FILE: 366-115-060-C-104-105.DWG	
REVIEWED BY A. SCHMIDTGALL	COPYRIGHT 2020 BY ANDERSON PERRY & ASSOC., INC.	



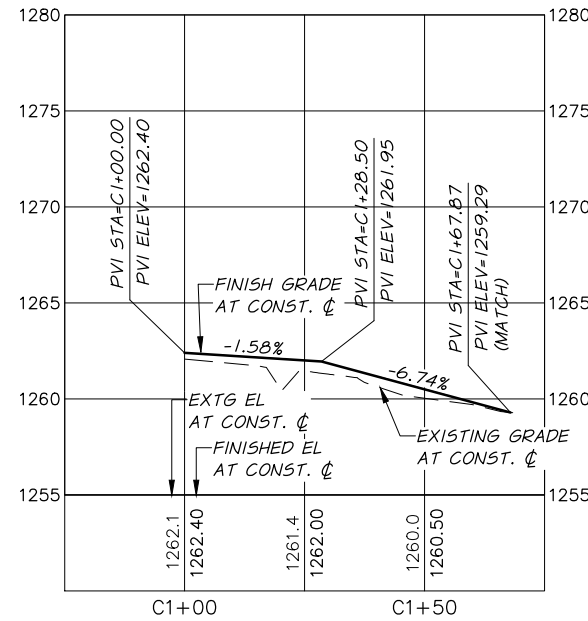
PRELIMINARY FOR REVIEW ONLY NOT FOR CONSTRUCTION
FED AID NO: XXXX



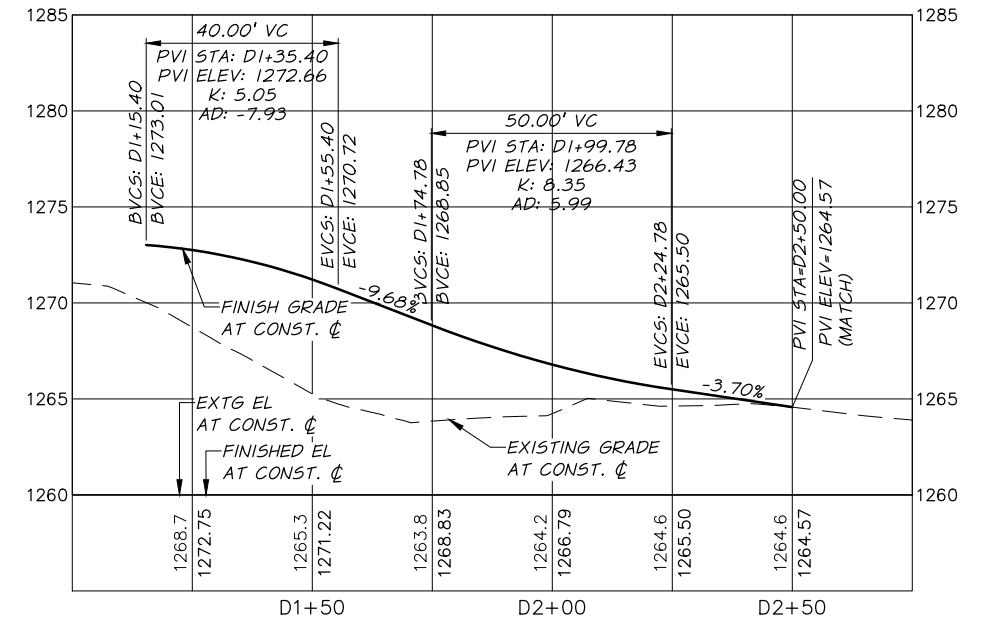
CITY OF WAITSBURG, WA MILL RACE ROAD GRADE CROSSING 2020	SHEET
	C-104
PLAN B,C,D,& E LINES	8 OF 11



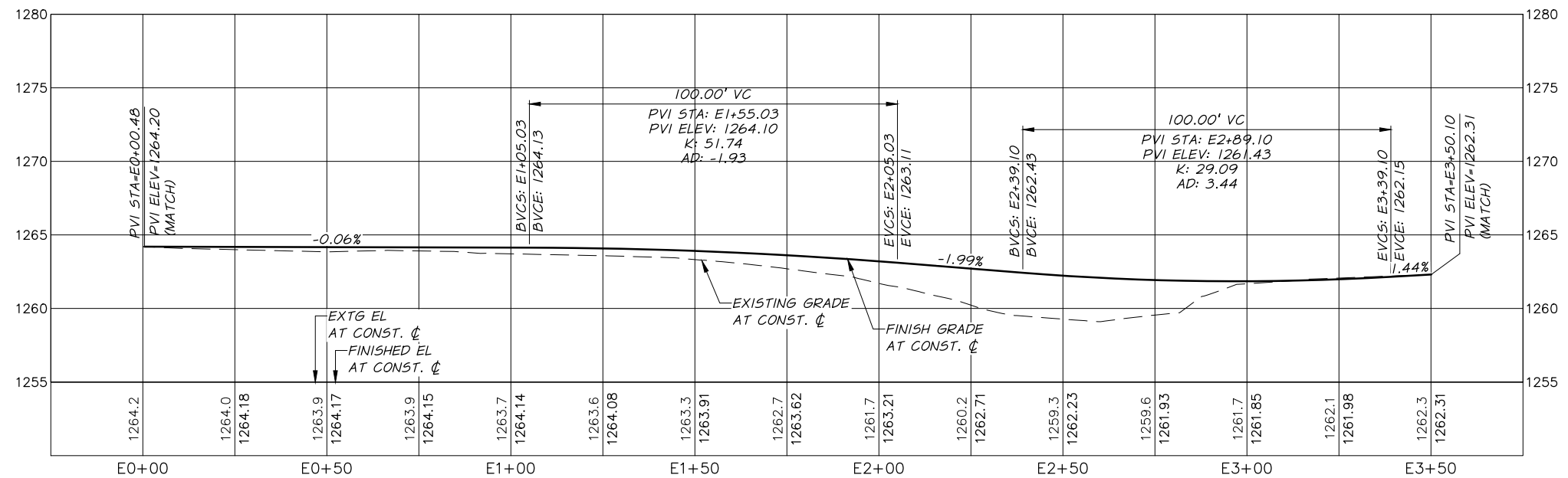
PROFILE - B-LINE



PROFILE - C-LINE



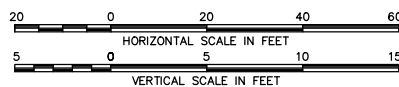
PROFILE - D-LINE



PROFILE - E-LINE

DESIGNED BY	E. ZITTERKOPF
DRAWN BY	E. ZITTERKOPF
REVIEWED BY	A. SCHMIDTGALL

JOB NUMBER	366-115	DATE	July 22, 2020
ACAD FILE:	366-115-060-C-104-105.DWG		
COPYRIGHT 2020 BY ANDERSON PERRY & ASSOC., INC.			



**PRELIMINARY
FOR REVIEW ONLY
NOT FOR CONSTRUCTION**
FED AID NO: XXXX



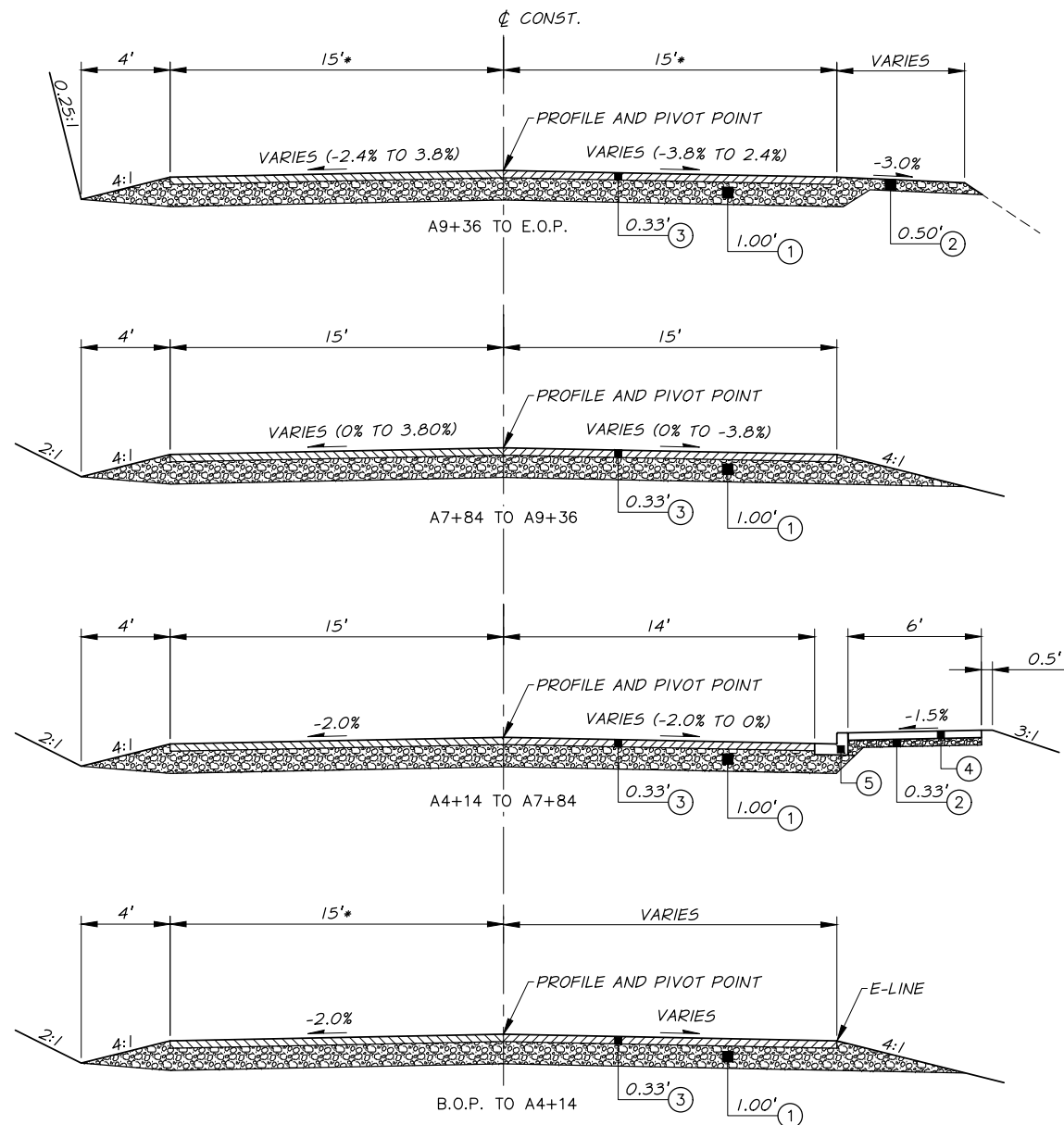
**CITY OF WAITSBURG, WA
MILL RACE ROAD GRADE CROSSING
2020**

PROFILE B,C,D,& E LINES

SHEET

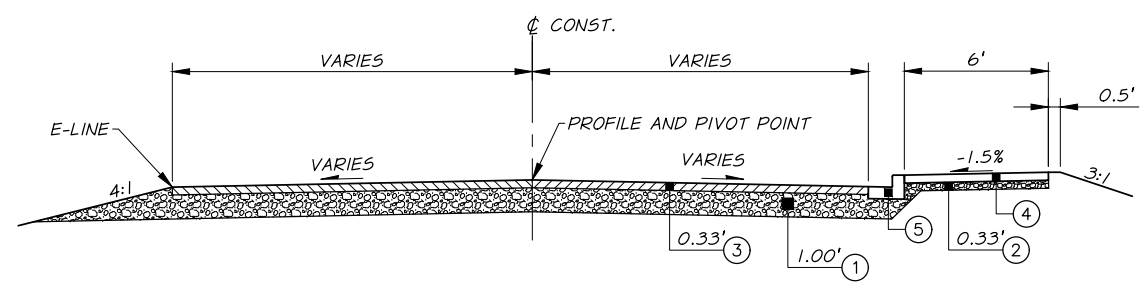
C-105

9 OF 11

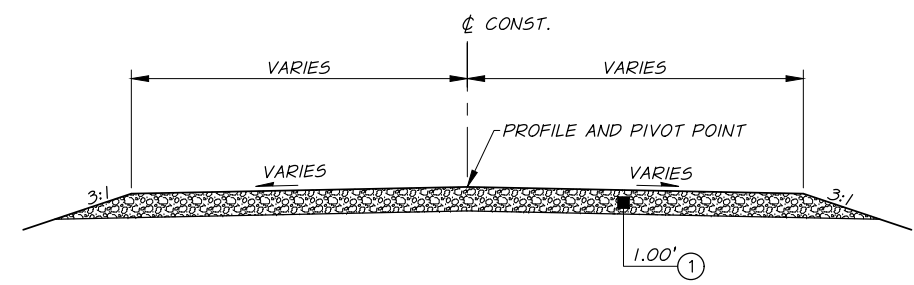


TYPICAL SECTION - MILL RACE RD
NTS

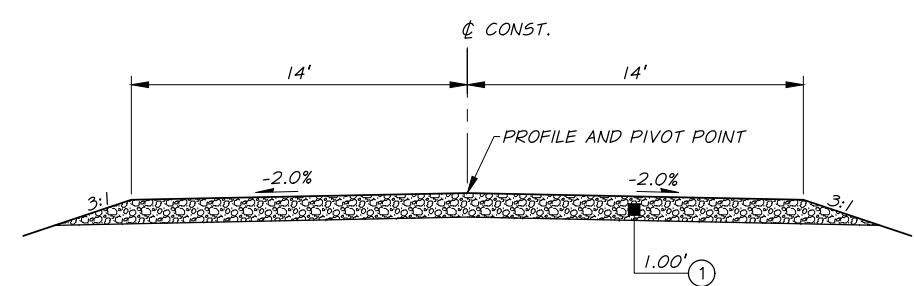
*SEE PLAN FOR TRANSITIONS



TYPICAL SECTION - MAIN ST
NTS



TYPICAL SECTION - C-LINE
NTS



TYPICAL SECTION - D-LINE
NTS

MATERIALS LEGEND

- ① CRUSHED SURFACING BASE COURSE
- ② CRUSHED SURFACING TOP COURSE
- ③ HMA CL. 1/2-INCH PG64-28
- ④ CEMENT CONCRETE SIDEWALK
- ⑤ CEMENT CONCRETE TRAFFIC CURB AND GUTTER

DESIGNED BY E. ZITTERKOPF	DATE July 22, 2020
DRAWN BY E. ZITTERKOPF	ACAD FILE: 366-115-060-C-301 TYP SCT.DWG
REVIEWED BY A. SCHMIDTGALL	COPYRIGHT 2020 BY ANDERSON PERRY & ASSOC., INC.

**PRELIMINARY
FOR REVIEW ONLY
NOT FOR CONSTRUCTION**
FED AID NO: XXXX



CITY OF WAITSBURG, WA
MILL RACE ROAD GRADE CROSSING
2020
TYPICAL SECTIONS

R:\Clients\Waitsburg\366-115 Mill Race Rd\060 Design\366-115-060-C-301 TYP SCT.dwg, 7/22/2020 11:27:31 AM, _AutoCAD PDF (General Documentation).p03









CONSTRUCTION NOTES

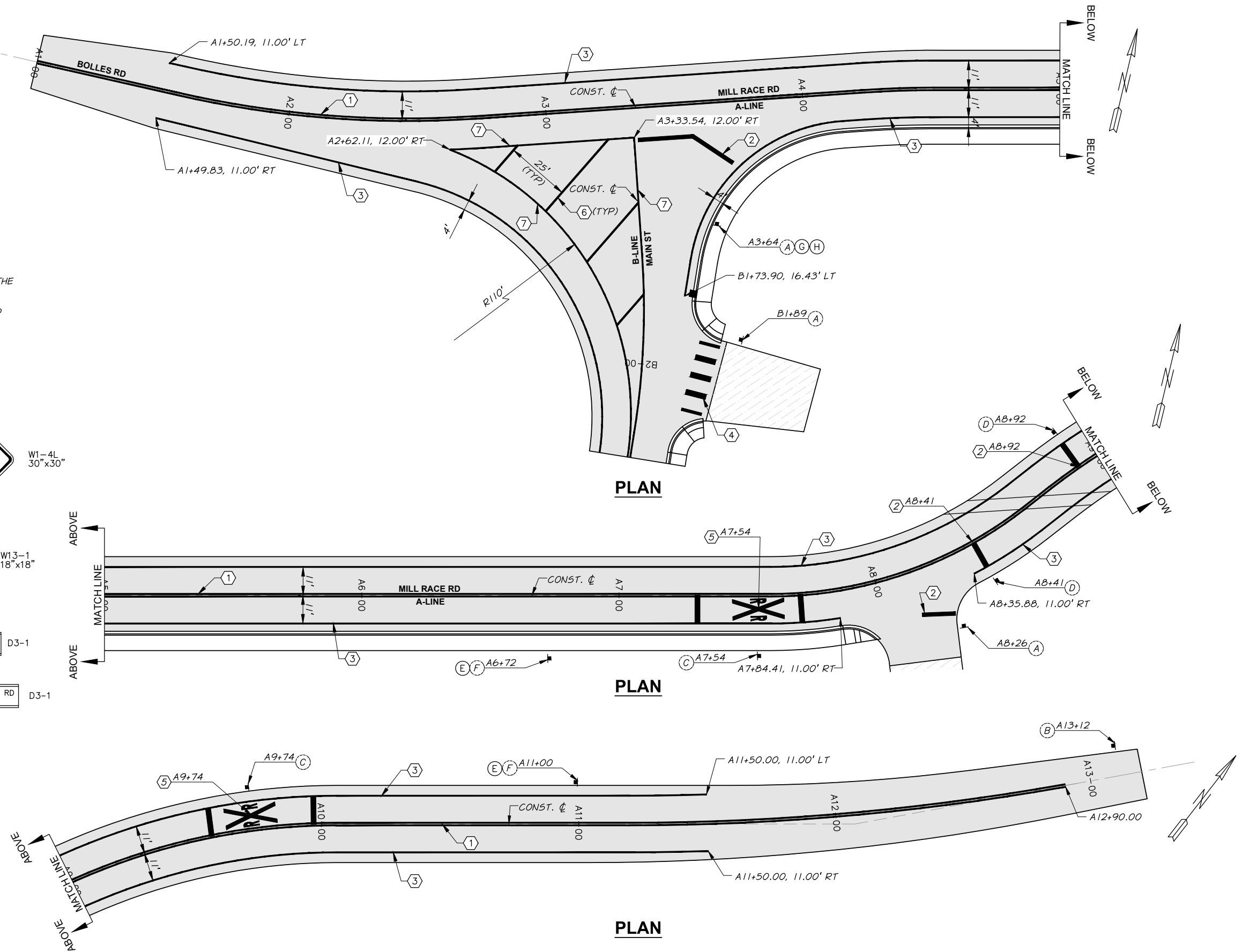
- ① PAINTED DOUBLE YELLOW SOLID LINE, SEE WSDOT STD PLAN M-20.10-02
- ② PAINTED STOP LINE, SEE WSDOT STD PLAN M-24.60-04
- ③ PAINTED WHITE EDGE LINE, SEE WSDOT STD PLAN M-20.10-02
- ④ PAINTED CROSSWALK, SEE WSDOT STD PLAN M-15.10-01
- ⑤ PAINTED RAILROAD CROSSING SYMBOL, SEE WSDOT STD PLAN M-11.10-03
- ⑥ PAINTED YELLOW WIDE LANE LINE, SEE WSDOT STD PLAN M-20.10-02
- ⑦ PAINTED YELLOW EDGE LINE, SEE WSDOT STD PLAN M-20.10-02

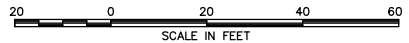

**SIGNING AND STRIPING
GENERAL NOTES**

- 1. ALL NEW SIGNS SHALL CONFORM TO THE LATEST EDITION OF THE MUTCD.
- 2. SIGNS SHALL BE INSTALLED ON STEEL POST. SEE WSDOT STD PLAN G-24.50-03, TYPE ST-2.

SIGN SCHEDULE

<p>(A)  R1-1 36"x36"</p>	<p>(E)  W1-4L 30"x30"</p>
<p>(B)  R2-1 24"x30"</p>	<p>(F)  W13-1 18"x18"</p>
<p>(C)  W10-1 36" DIA</p>	<p>(G)  D3-1</p>
<p>(D)  R15-1 48"x9"</p>	<p>(H)  D3-1</p>



		 <p>SCALE IN FEET</p>	<p>PRELIMINARY FOR REVIEW ONLY NOT FOR CONSTRUCTION</p> <p>FED AID NO: XXXX</p>	 <p>Anderson Perry & associates, inc. engineering • surveying • natural resources</p>	<p>CITY OF WAITSBURG, WA MILL RACE ROAD GRADE CROSSING 2020</p> <p>SIGNING AND STRIPING PLAN</p>	<p>SHEET</p> <p>W-101</p> <p>11 OF 11</p>
<p>DESIGNED BY: E. ZITTERKOPF</p> <p>DRAWN BY: E. ZITTERKOPF</p> <p>REVIEWED BY: A. SCHMIDTGALL</p>	<p>BY: _____</p> <p>DATE: _____</p>	<p>JOB NUMBER: 366-115</p> <p>DATE: July 22, 2020</p> <p>ACAD FILE: 366-115-060-W-101.DWG</p> <p>COPYRIGHT 2020 BY ANDERSON PERRY & ASSOC., INC.</p>				