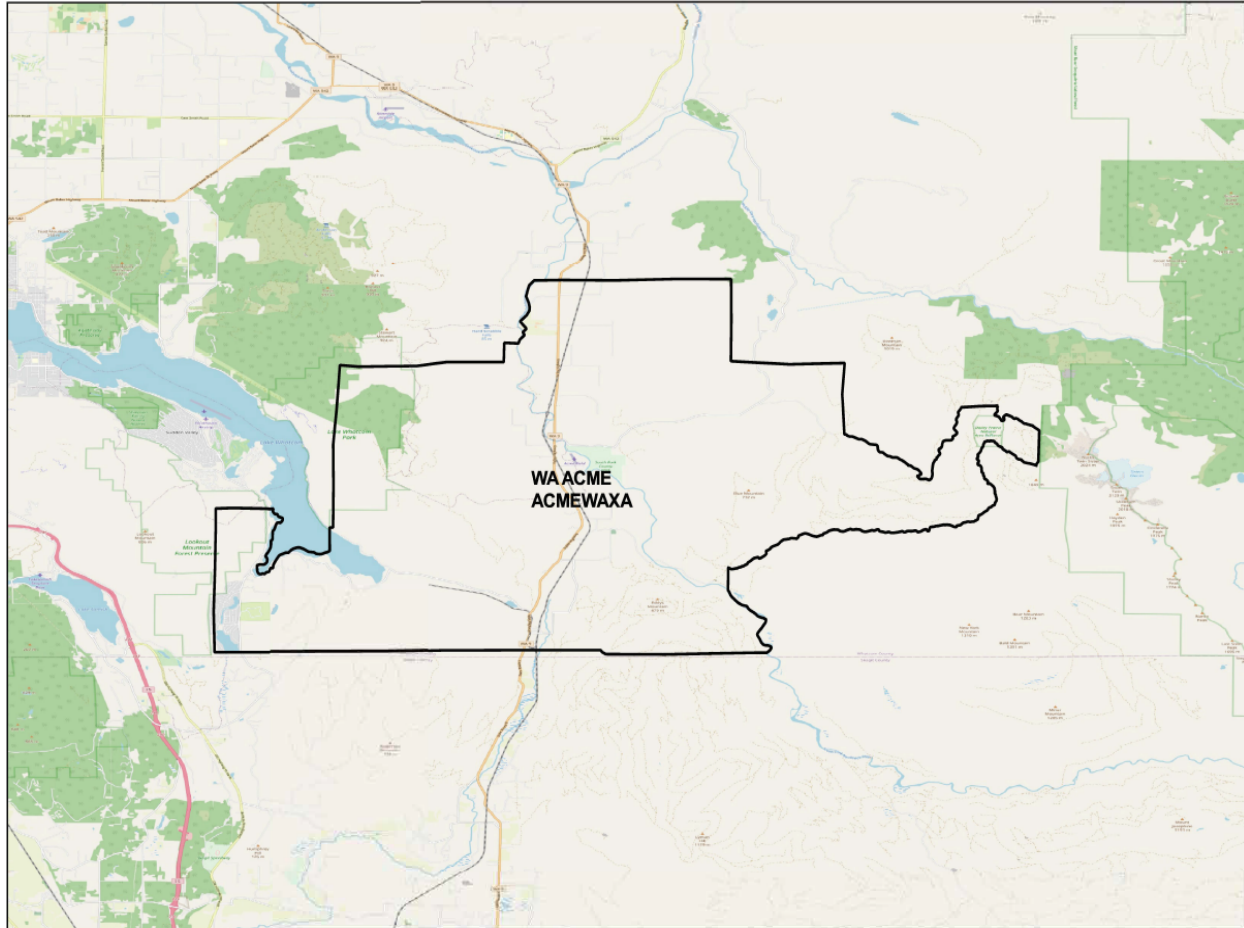


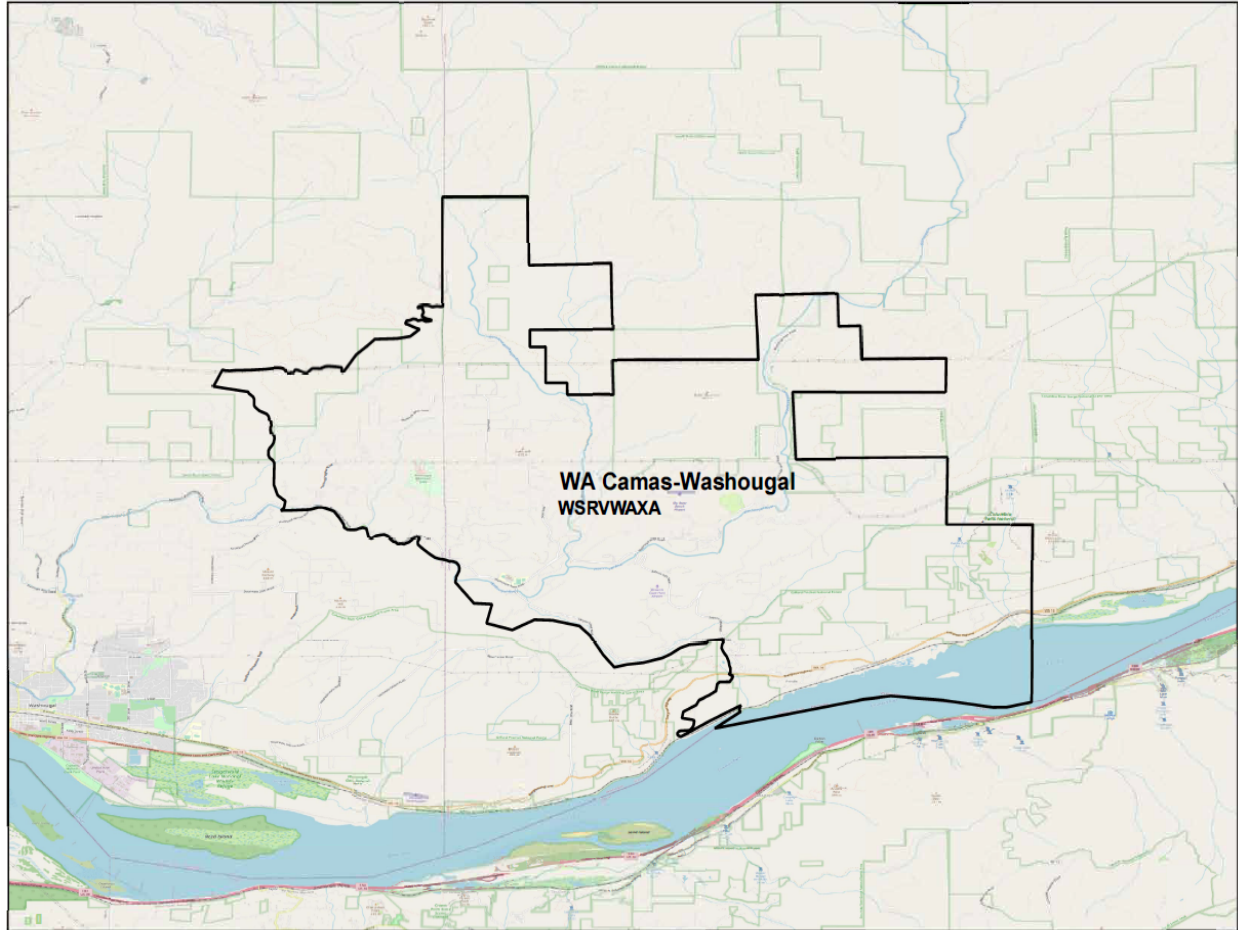
ACME EXCHANGE AREA MAP



ISSUED: JANUARY 6, 2021
ISSUED BY ZIPLY FIBER
BY JESSICA EPLEY, REGULATORY & EXTERNAL AFFAIRS DIRECTOR

EFFECTIVE: FEBRUARY 5, 2021

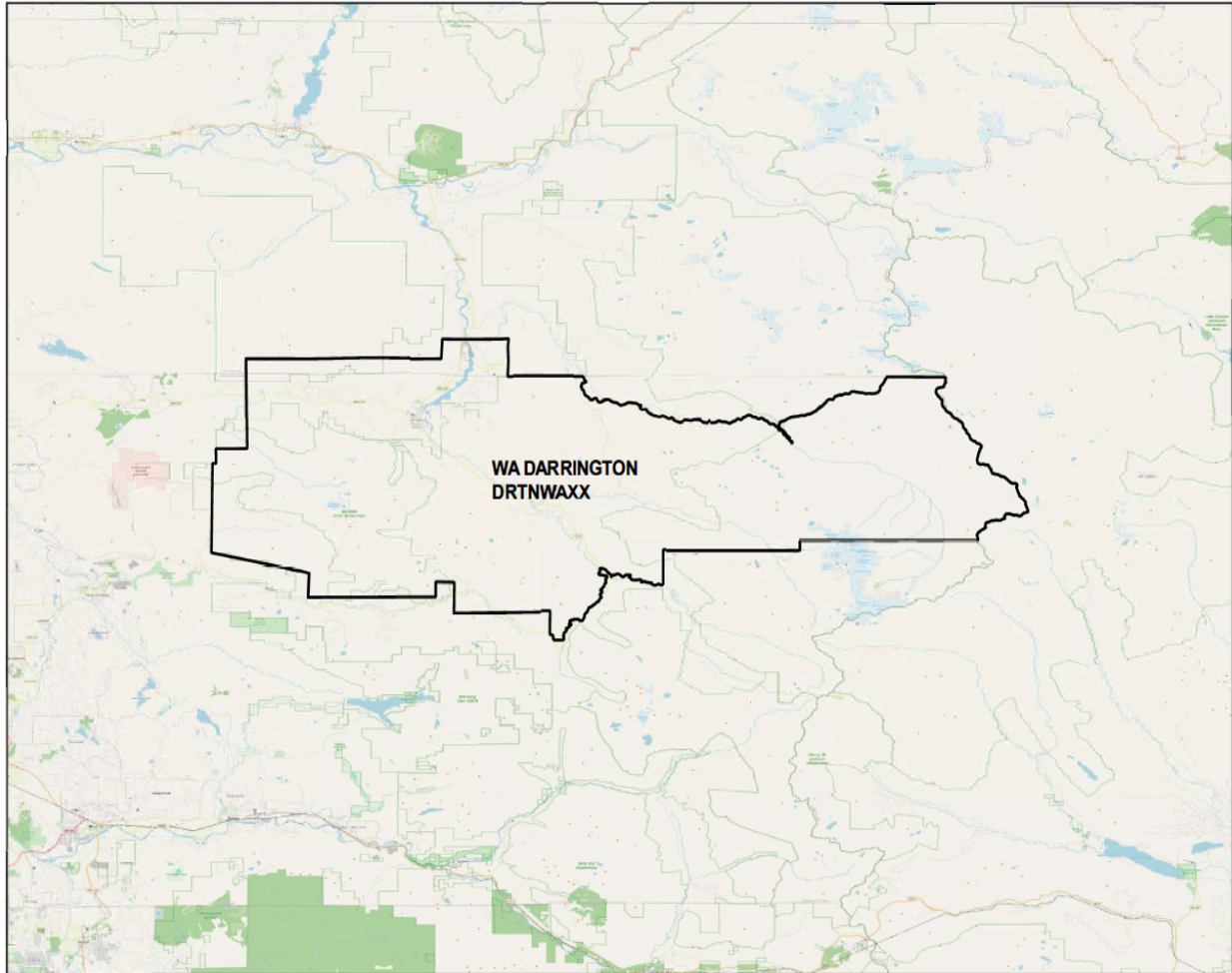
CAMAS-WASHOUGAL EXCHANGE AREA MAP



ISSUED: JANUARY 6, 2021
ISSUED BY ZIPLY FIBER
BY JESSICA EPLEY, REGULATORY & EXTERNAL AFFAIRS DIRECTOR

EFFECTIVE: FEBRUARY 5, 2021

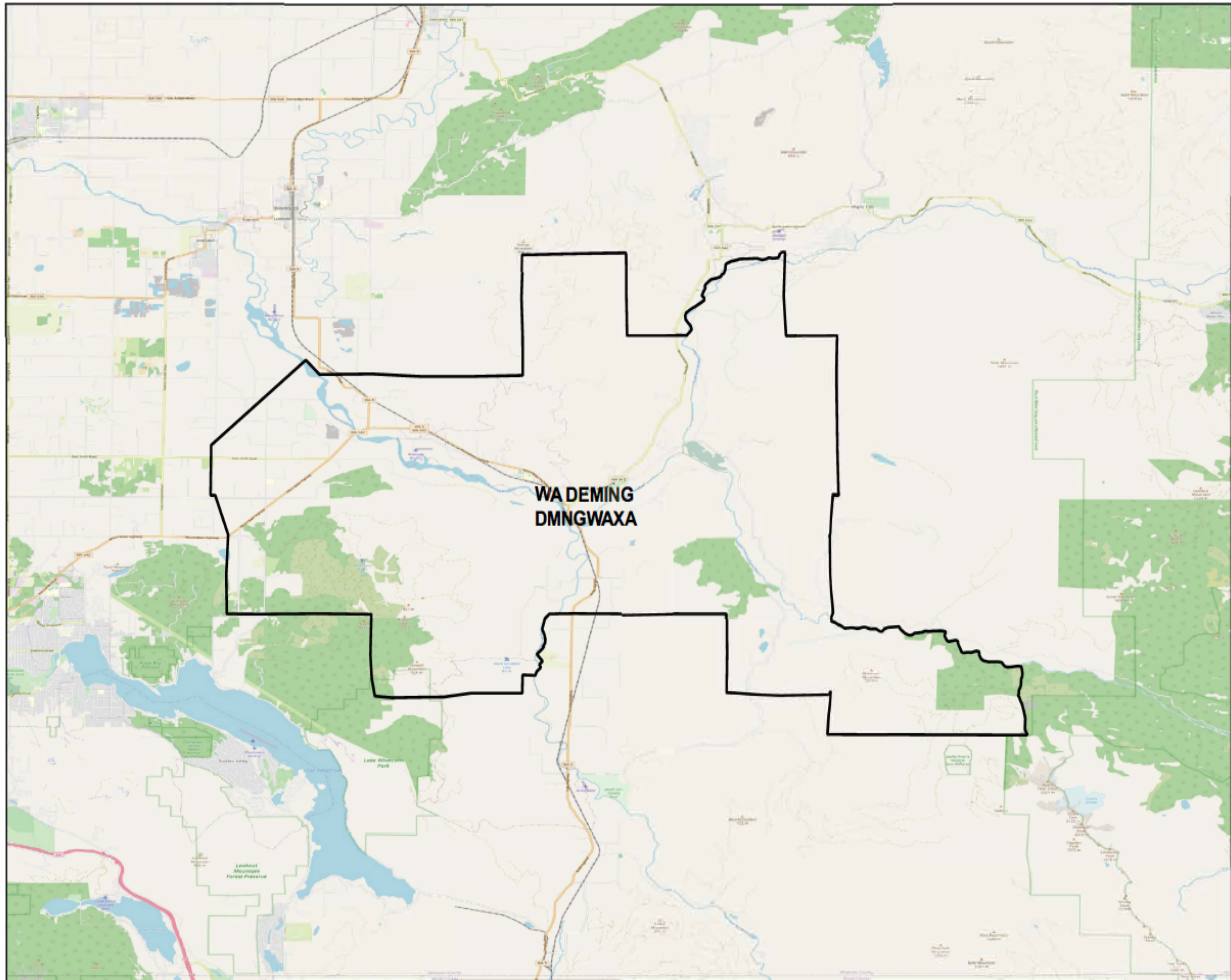
DARRINGTON EXCHANGE AREA MAP



ISSUED: JANUARY 6, 2021
ISSUED BY ZIPLY FIBER
BY JESSICA EPLEY, REGULATORY & EXTERNAL AFFAIRS DIRECTOR

EFFECTIVE: FEBRUARY 5, 2021

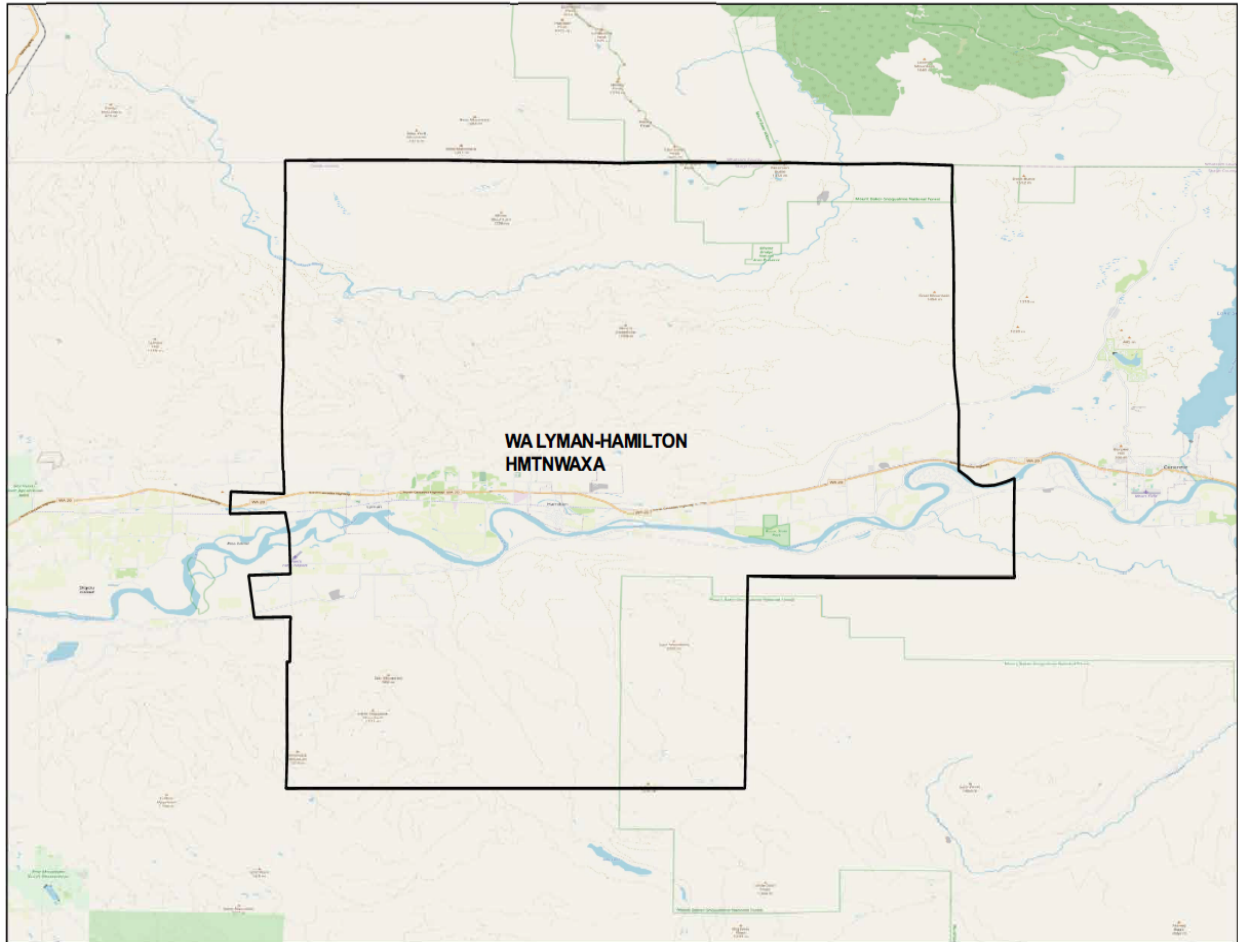
DEMING EXCHANGE AREA MAP



ISSUED: JANUARY 6, 2021
ISSUED BY ZIPLY FIBER
BY JESSICA EPLEY, REGULATORY & EXTERNAL AFFAIRS DIRECTOR

EFFECTIVE: FEBRUARY 5, 2021

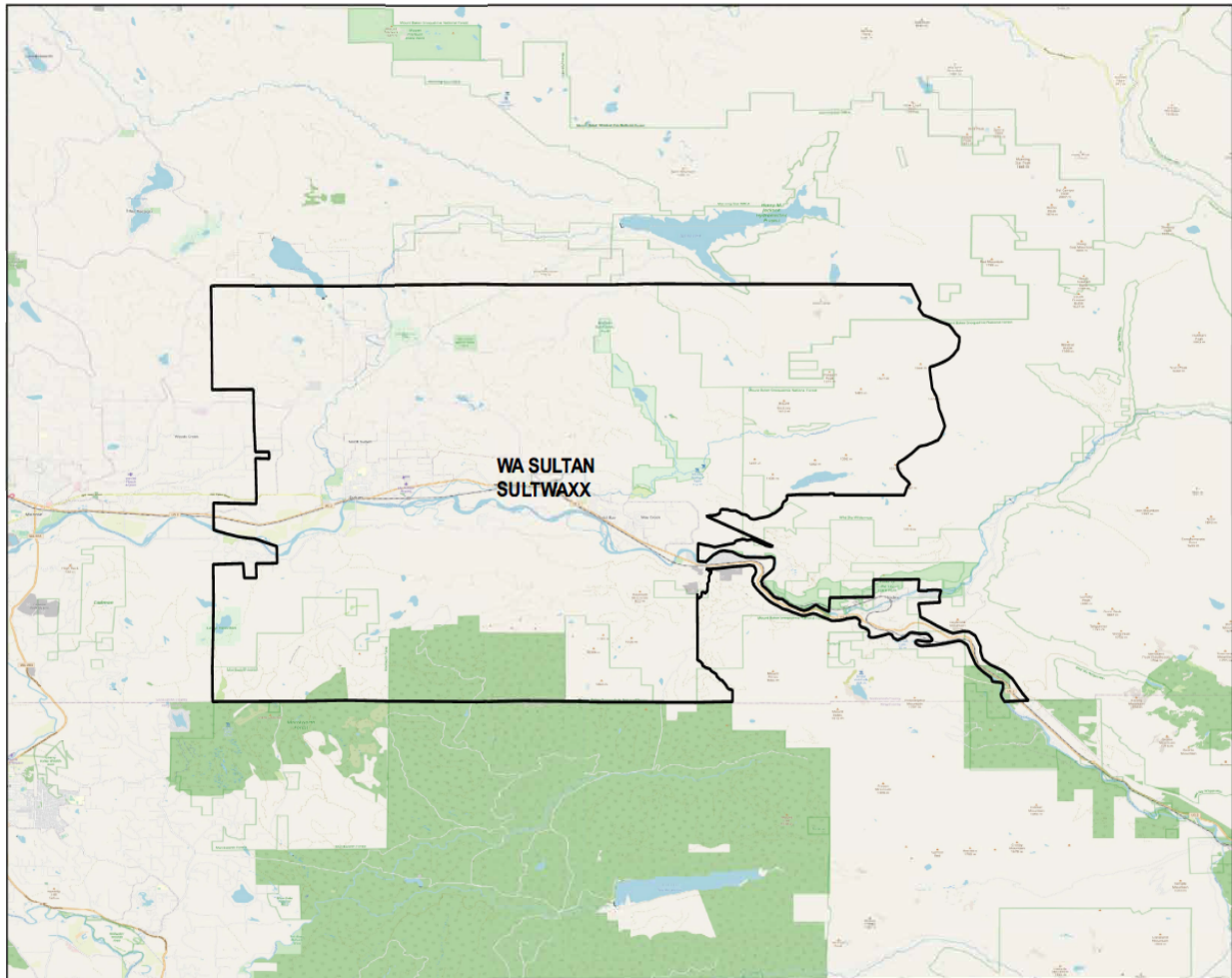
LYMAN-HAMILTON EXCHANGE AREA MAP



ISSUED: JANUARY 6, 2021
ISSUED BY ZIPLY FIBER
BY JESSICA EPLEY, REGULATORY & EXTERNAL AFFAIRS DIRECTOR

EFFECTIVE: FEBRUARY 5, 2021

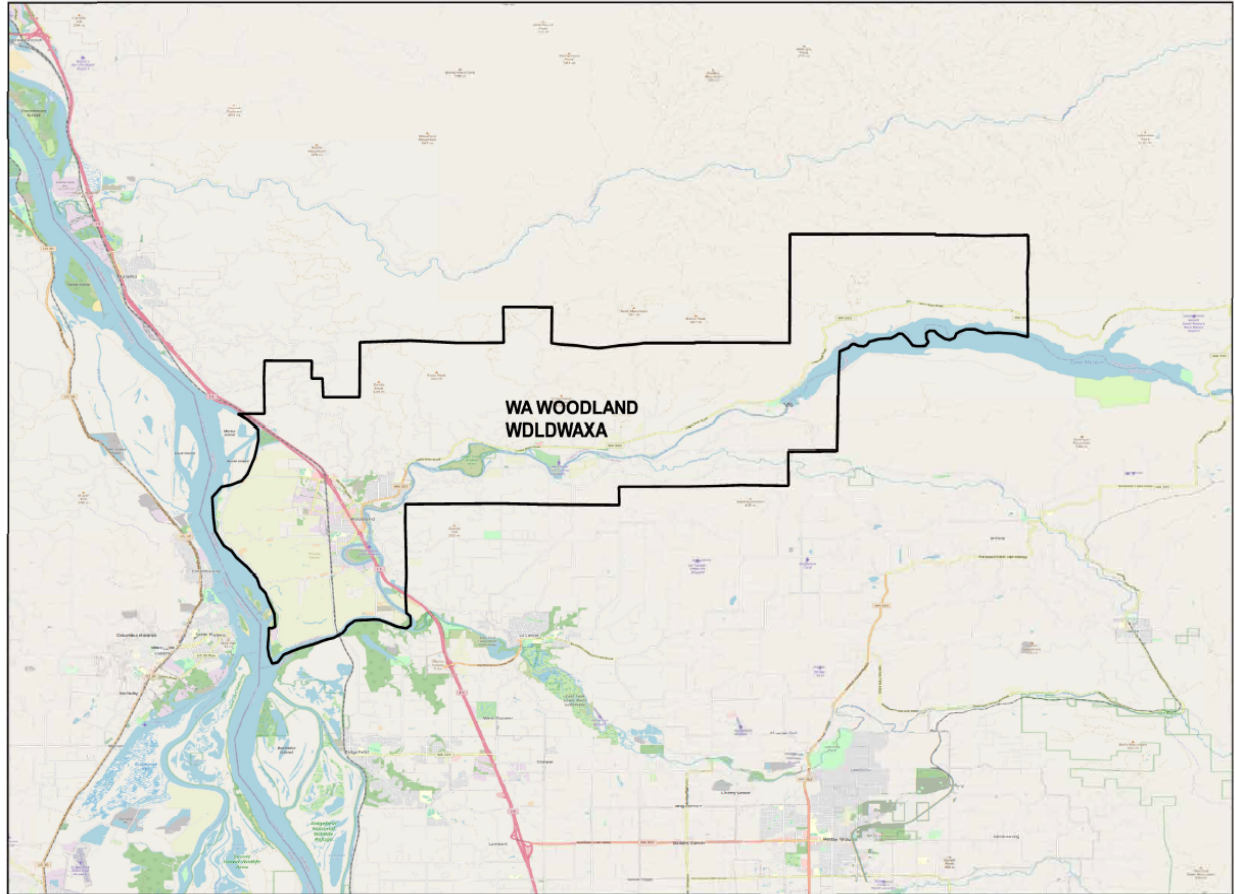
SULTAN EXCHANGE AREA MAP



ISSUED: JANUARY 6, 2021
ISSUED BY ZIPLY FIBER
BY JESSICA EPLEY, REGULATORY & EXTERNAL AFFAIRS DIRECTOR

EFFECTIVE: FEBRUARY 5, 2021

WOODLAND EXCHANGE AREA MAP



ISSUED: JANUARY 6, 2021
ISSUED BY ZIPLY FIBER
BY JESSICA EPLEY, REGULATORY & EXTERNAL AFFAIRS DIRECTOR

EFFECTIVE: FEBRUARY 5, 2021