

Kelso Fencing

Ron Rose

DEPUTY CHIEF, BNSF POLICE

MAY 26, 2020



Kelso Fencing



Issue:

- High Trespasser Traffic due to contributing area-specific conditions
- Three train versus trespasser fatalities in the past 30 months

Location:

- Seattle Subdivision, milepost 96 to 96.7, Kelso Washington

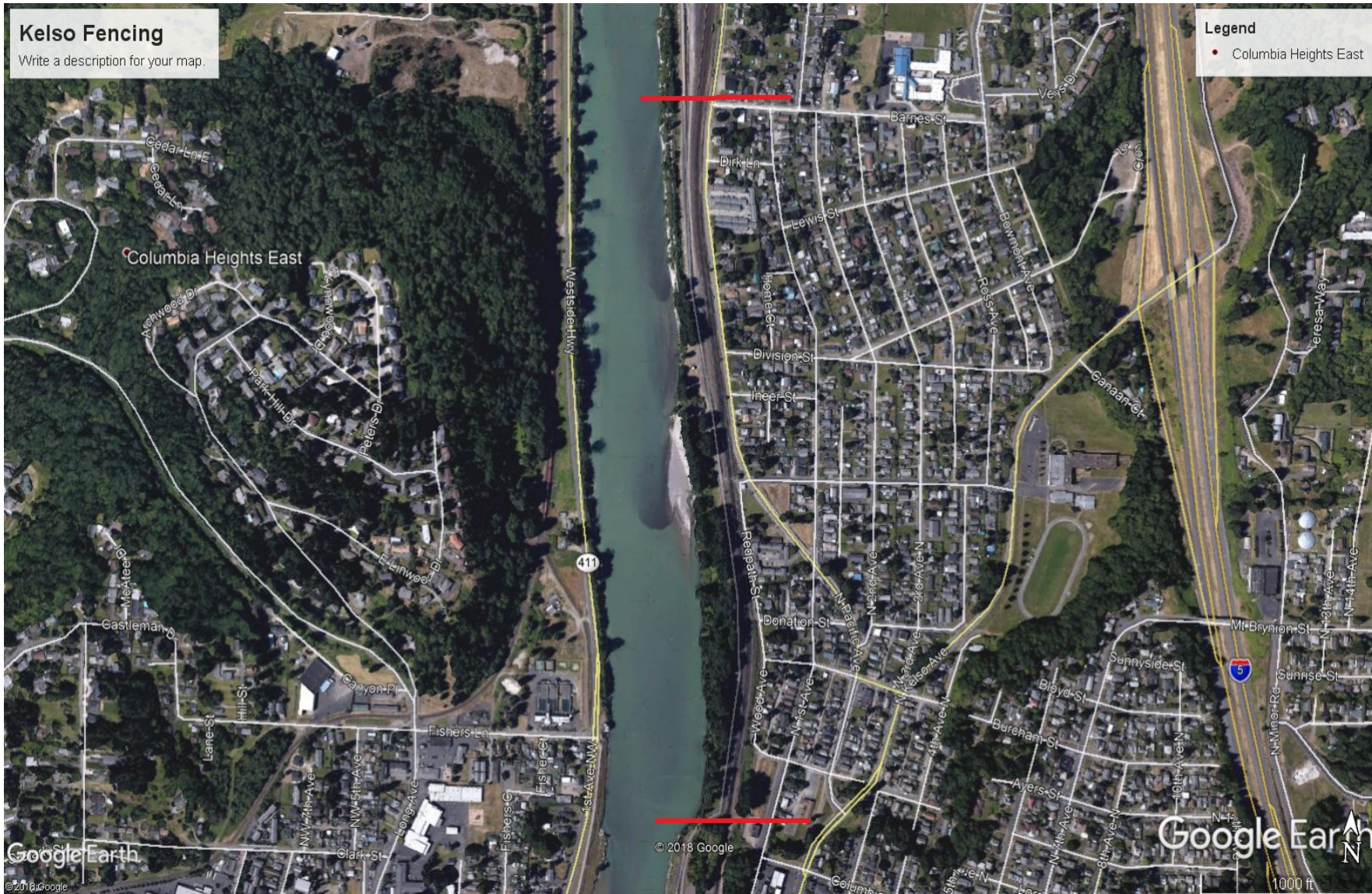
Area Description:

- Two mainline tracks with a few siding tracks closer to milepost 96
- Cowlitz River is on the west side of the tracks (sport fishing)
- Residences (single and multi-family) and road access are on the east side of the tracks
- Paved walking path runs along the west edge of BNSF Railway property
- Six foot cyclone fence runs between the walking path and railroad property

Area Description (continued):

- Cyclone fence is approximately one mile in length
- Cyclone fence has been cut in numerous locations to allow access to/from the east
- Fence belongs to / maintained by the City of Kelso
- Acceptable crossing points are at milepost 95.556 and milepost 97.67

Kelso Fencing



Kelso Fencing



Kelso Fencing



Kelso Fencing



Kelso Fencing



Kelso Fencing



Kelso Fencing



Kelso Fencing



Kelso Fencing



