

Univar USA Inc.  
3075 Highland Pkwy #200  
Downers Grove, IL 60515

T 331 777 6000  
www.univarusa.com



Washington Utilities and Transportation Commission  
1300 S. Evergreen Park  
Drive S.W.  
PO Box 47205  
Olympia, WA 98504-7250

July 13th, 2016

RE: Univar USA - Spokane: Rule Exemption Request, WAC-480-60-40

Univar USA – Spokane  
4515 E. Wisconsin Avenue  
Spokane, WA 99212

Phone: 503-539-9161  
Contact: Vincent Matteson

As required under WAC 480-60-20(4) Univar USA – Spokane is requesting a rule exemption as described below.

Rule Exemption Request:

- 1) Written request to the Commission requesting exemption from railroad clearance rules in WAC 480-60.
- 2) WAC 480-60-040 generally requires an overhead clearance of at least 22'-6" measured from the top of the track. Although the rules provide for exceptions, the structure associated with Univar USA – Spokane's request is subject to the general rule.
- 3) The request relates to the installation of railcar unloading racks which will provide additional safety / fall protection for personnel while unloading railcars.  
Reference attachment "A" Spokane Railcar Unloading Rack and attachment "B" Spokane Railcar Unloading Rack Description
- 4) The BNSF Railway Company (BNSF), as the primary rail operator within the OP facility, has tentatively approved our facility improvement requiring the proposed exemption. BNSF's support is conditional upon the Commission granting an exception for the proposed clearances.
- 5) The overhead track clearance attained by the proposed railcar unloading design is less than that required by WAC-480-60-40. The overhead clearance under the

rack safety cage (in stored position) would be reduced to 18'-2" & 20'-8" for the length of the 8' x 8' horizontal safety cage.

- 6) The proposed overhead track clearance exception is as follows: Clearance below the loading rack (in stored position) to be reduced to 18'-2" & 20'-8" for the length of 8'-0" directly below the horizontally stored rack with safety cage.
- 7) Univar USA – Spokane, with direction from the BNSF, will clearly mark and sign the structure identified above as having substandard clearances.

I look forward to your response to our rule exemption request. Please contact me at the above number or my office number 503-222-6265 should you have any questions or require further clarification.

Sincerely,

Vincent Matteson  
AutoCAD Technician

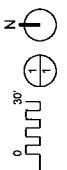
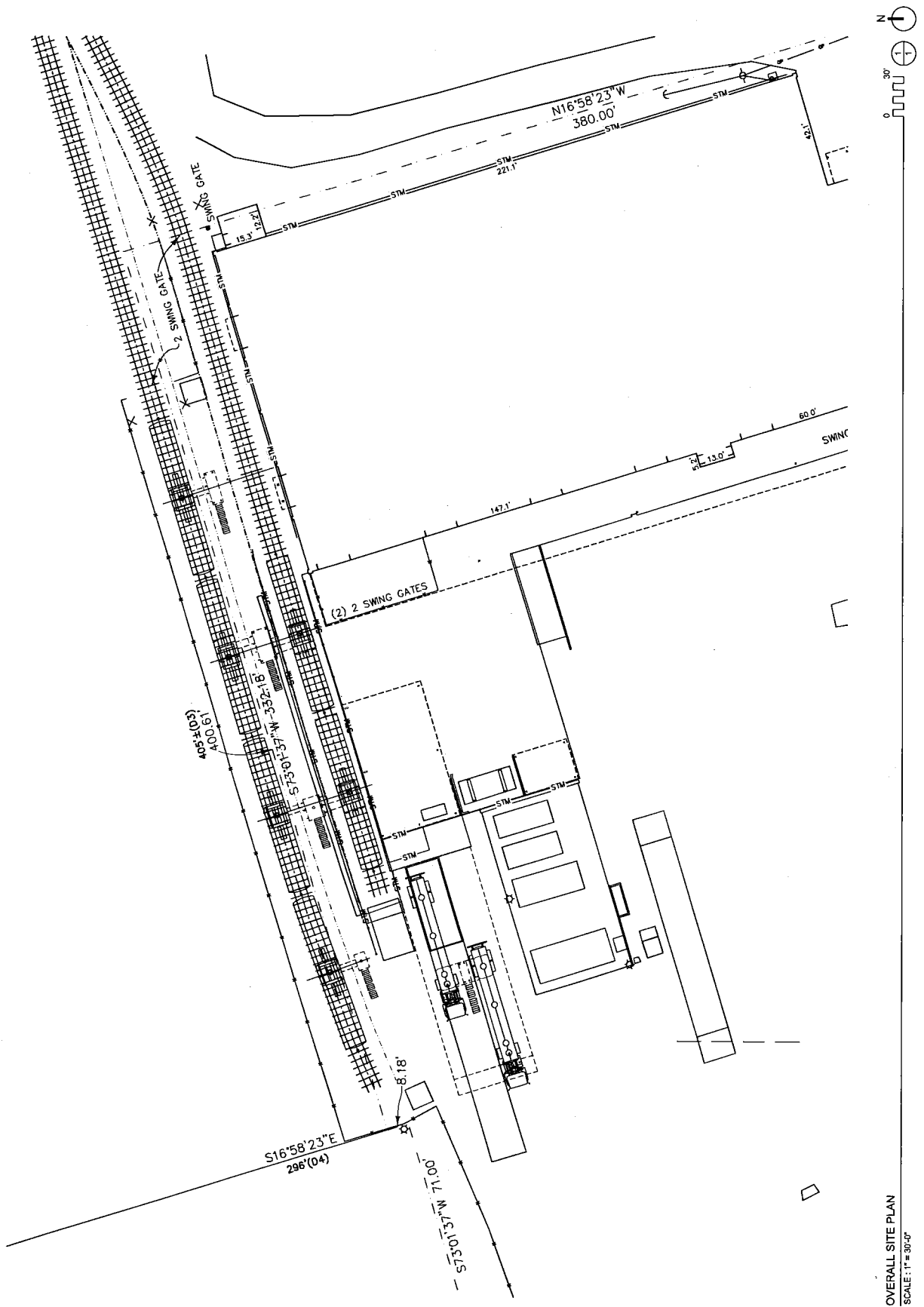
cc: Clay Gehring

RESONANCE ARCHITECTURE  
 PLLC  
 955 BARNETT AVENUE, SUITE 100, SPOKANE, WA 83402  
 PHONE: 781-888-8888 FAX: 781-888-8888  
 EMAIL: INFO@RESONANCE-ARCHITECTURE.COM

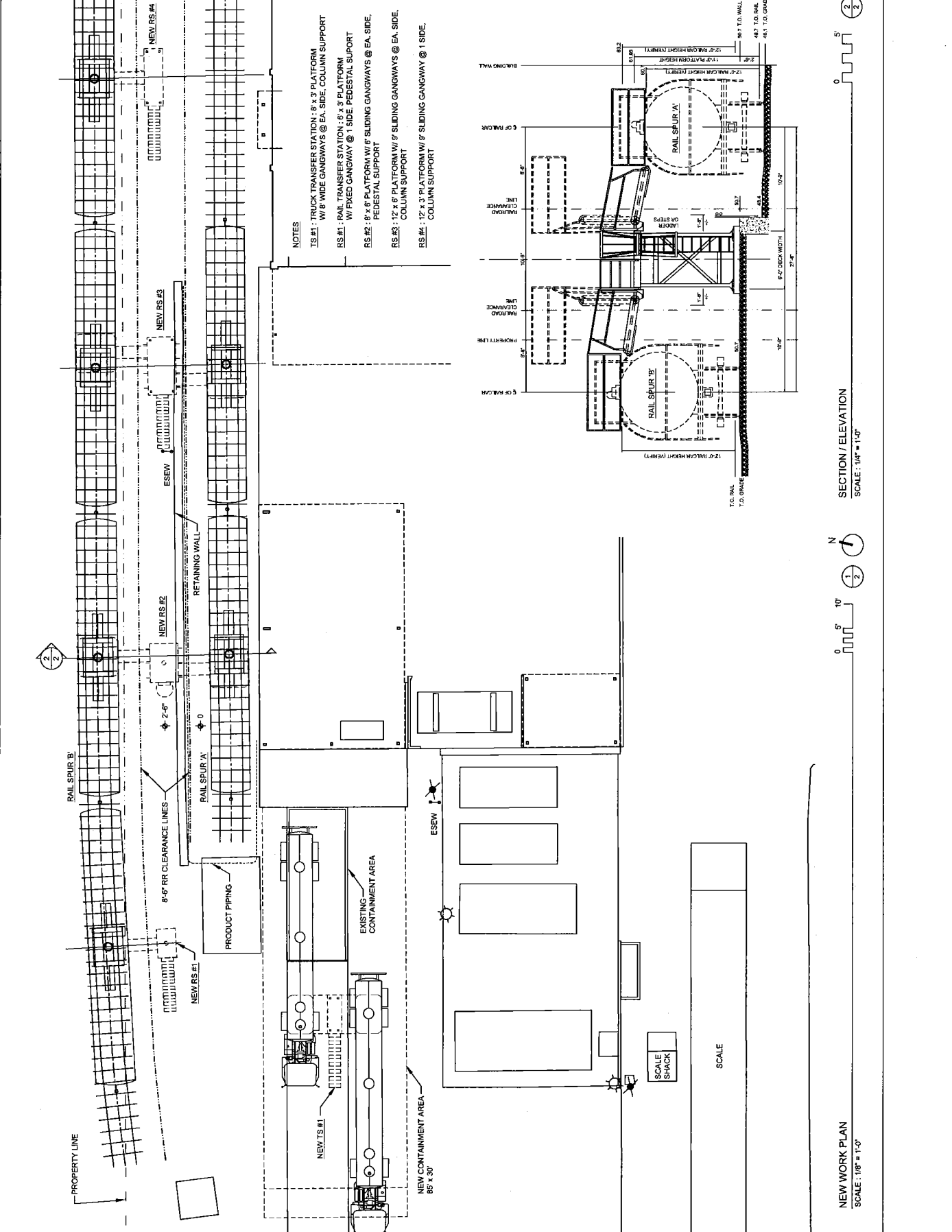
UNIVAR USA, INC.  
 NEW GAUSTITANK FARM  
 AND TRANSFER ADDITIONS  
 4515 East Wisconsin Avenue, Spokane, WA



DATE: 02/12/11  
 SHEET: 000001  
 TITLE: SITE PLAN



OVERALL SITE PLAN  
 SCALE: 1" = 30'-0"

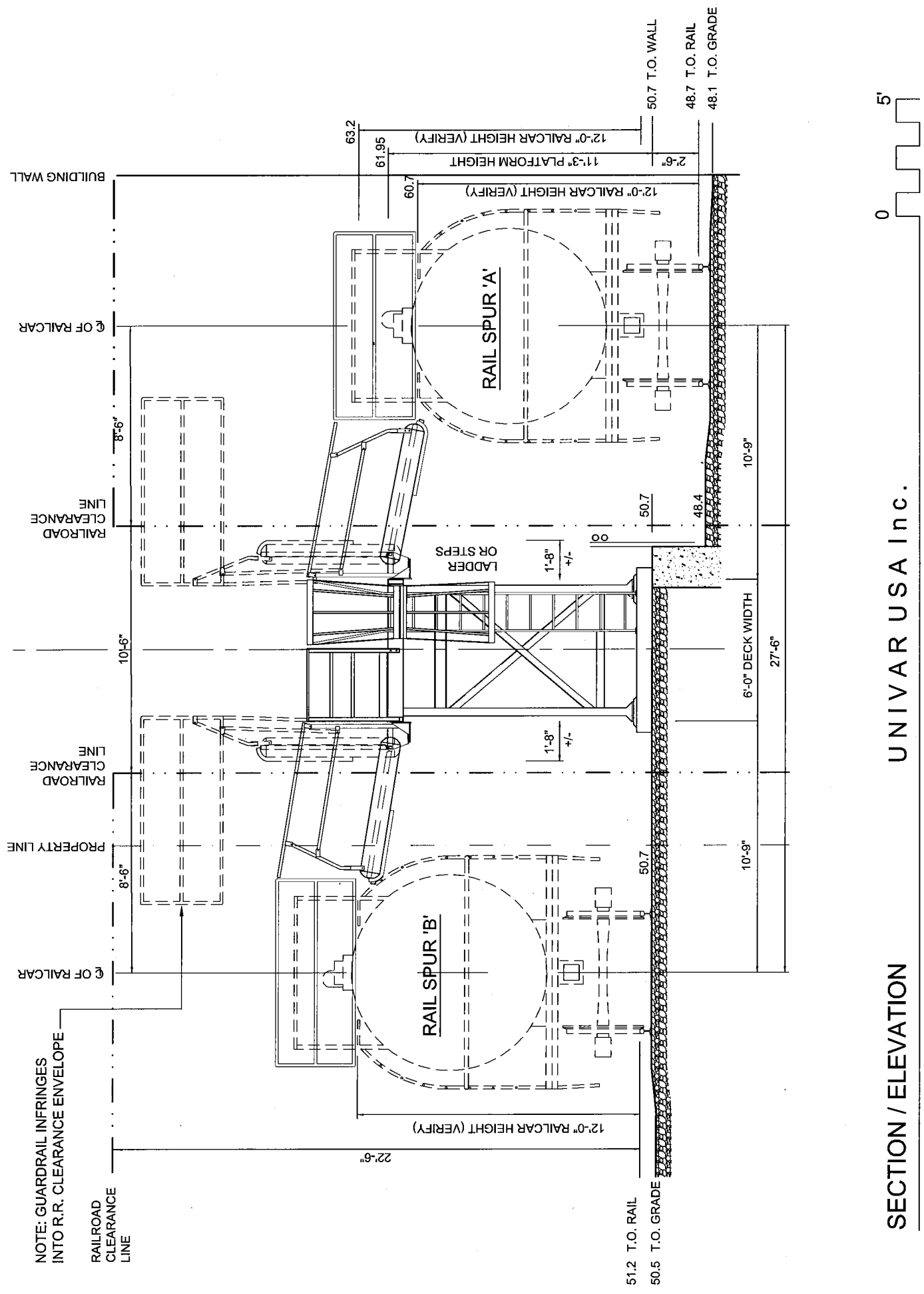


NOTES  
 TS #1: TRUCK TRANSFER STATION: 8' x 3' PLATFORM W/ 8' WIDE GANGWAYS @ EA. SIDE. COLUMN SUPPORT  
 RS #1: RAIL TRANSFER STATION: 8' x 3' PLATFORM W/ FIXED GANGWAY @ 1 SIDE. PEDESTAL SUPPORT  
 RS #2: 8' x 8' PLATFORM W/ 8' SLIDING GANGWAYS @ EA. SIDE. PEDESTAL SUPPORT  
 RS #3: 12' x 6' PLATFORM W/ 8' SLIDING GANGWAYS @ EA. SIDE. COLUMN SUPPORT  
 RS #4: 12' x 3' PLATFORM W/ 8' SLIDING GANGWAY @ 1 SIDE. COLUMN SUPPORT

RAIL SPUR A  
 RAIL SPUR B  
 NEW TS #1  
 NEW RS #1  
 NEW RS #2  
 NEW RS #3  
 NEW RS #4  
 ESEW  
 PRODUCT PIPING  
 EXISTING CONTAINMENT AREA  
 NEW CONTAINMENT AREA 85' x 30'  
 SCALE SHACK  
 SCALE

SECTION/ELEVATION  
 SCALE: 1/4" = 1'-0"

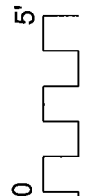
NEW WORK PLAN  
 SCALE: 1/8" = 1'-0"



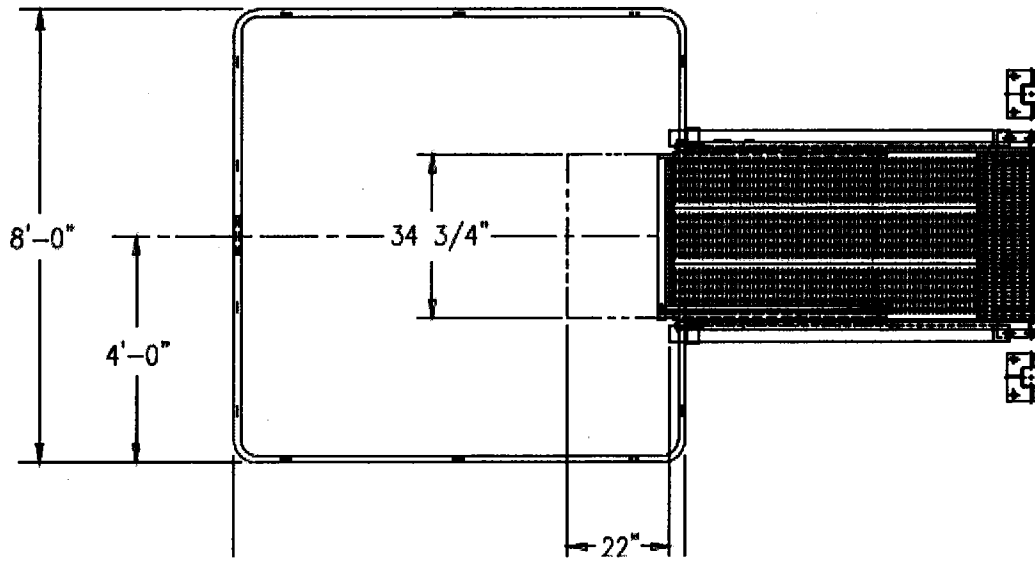
SECTION / ELEVATION

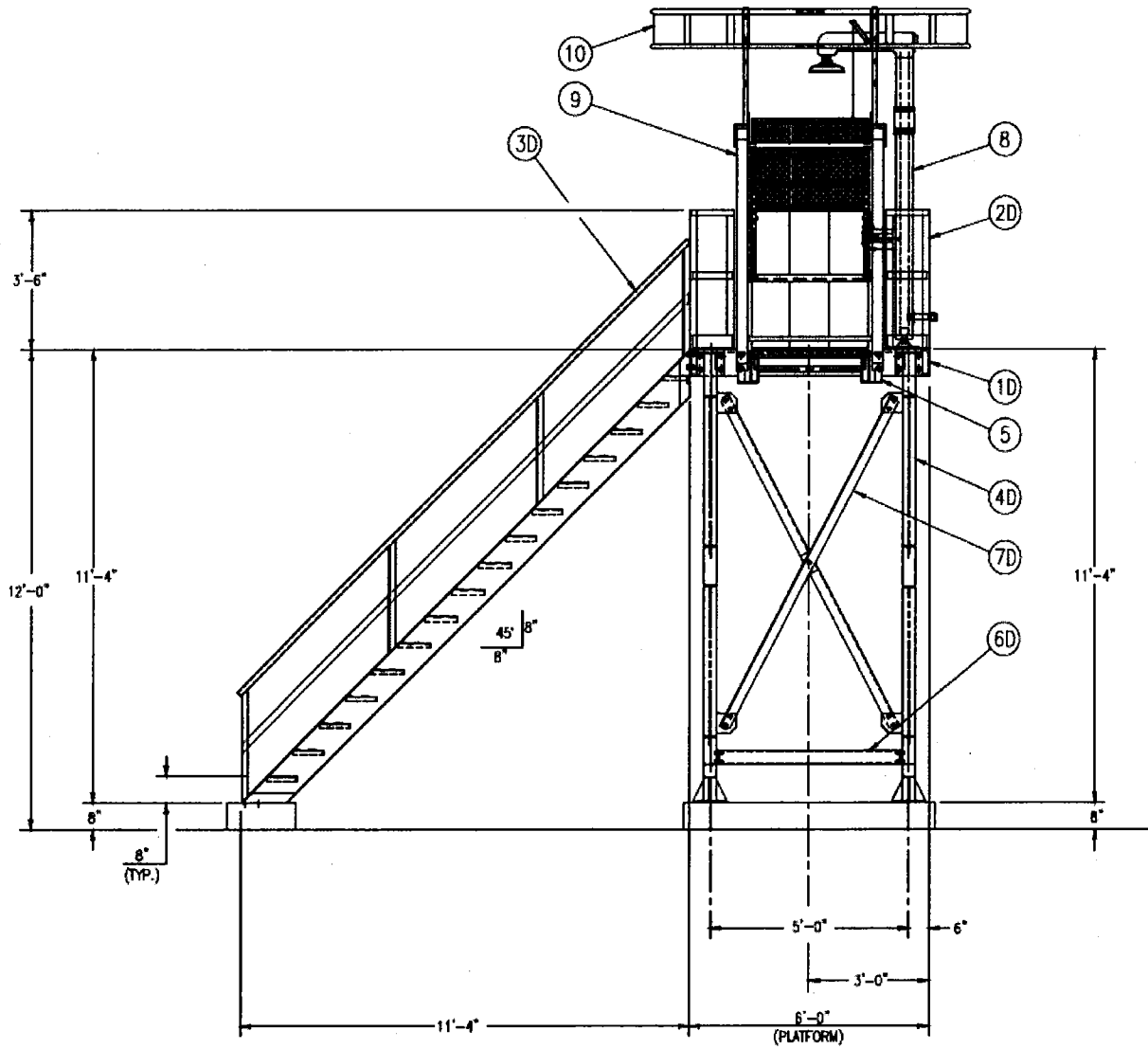
UNIVAR USA Inc.

4515 East Wisconsin Avenue, Spokane, WA











## Attachment B – Spokane Railcar Unloading Rack (Description)

- 6        **TELESCOPING RAMP**
  - \*3' wide, FRP tread – Horizontal reach side mounted = 6'8 3/8" with a 22" extension
  - \*Spring counter-balanced for easy raising and lowering
  - \*Includes handrails, midrails, uprights, and adjustable chain stops
  
- 6        **RAILCAR SAFETY CAGE**
  - \*8' deep x 8' wide – 2-rail, 12" high, self-leveling enclosure
  
- 1        **RS-1: 'INSTA-RACK' - SINGLED SIDED**
  - \*3' wide x 6' long x 11'-4" high platform with 1(x) 30" wide access stairs
  - \*Includes 1(x) Pedestal support – FRP Grating on Platform + Stairs
  - \*Includes handrails, midrails, and 4" kick-plates
  
- 1        **RS-2: 'INSTA-RACK' - DOUBLE SIDED**
  - \*6' wide x 8' long x 11'-4" high w/ Caged Ladder Access – Pedestal support – FRP Grating
  - \*Includes 2(x) 6' long Slide-tracks, 3' wide swing-gates and rolling carriages
  - \*Includes handrails, midrails, and 4" kick-plates
  
- 1        **RS-3: 'INSTA-RACK' - DOUBLE SIDED**
  - \*6' wide x 12' long x 11'-4" high w/ 30" wide access stairs – 2(x) Chair supports – FRP grating
  - \*Includes 2(x) 9' long Slide-tracks, 3' wide swing-gates and rolling carriages
  - \*Includes handrails, midrails, and 4" kick-plates
  
- 1        **RS-4: 'INSTA-RACK' - SINGLED SIDED**
  - \*3' wide x 12' long x 11'-4" high w/ 30" wide access stairs – 2(x) Chair supports – FRP grating
  - \*Includes 2(x) 9' long Slide-tracks, 3' wide swing-gates and rolling carriages
  - \*Includes handrails, midrails, and 4" kick-plates