

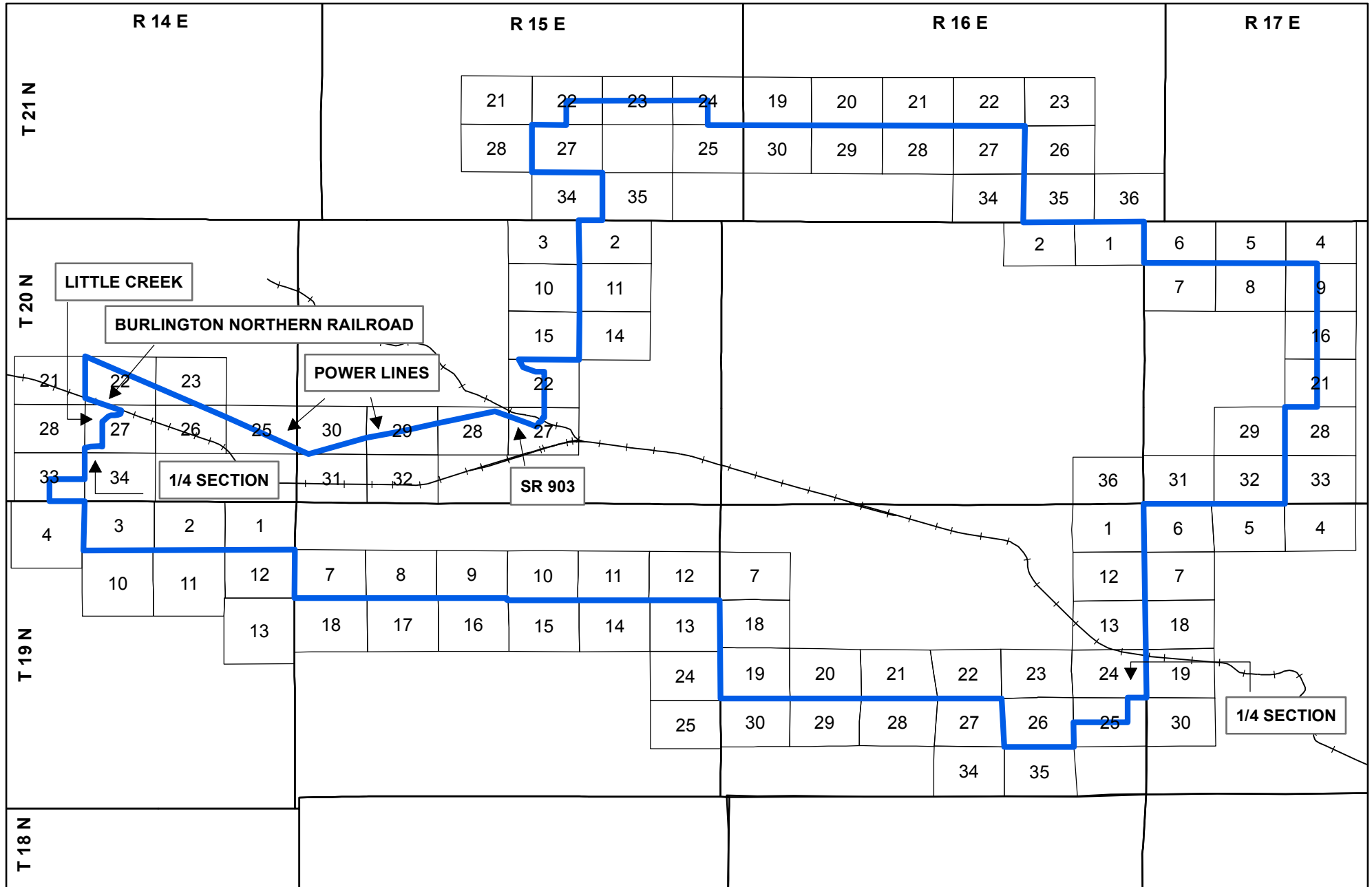


CLE ELUM, WASHINGTON
EXCHANGE AREA



WN U-40
SECTION 5
1ST REVISED SHEET M-19

ISSUED: December 19, 2013
EFFECTIVE: January 1, 2014



Qwest Corporation d/b/a CenturyLink QC	TITLE PAGE
WN U-45	Second Revised Sheet 1
EXCHANGE AND	Cancels First Revised Sheet 1
NETWORK SERVICES	
WASHINGTON	

TERMS, CONDITIONS, RATES AND CHARGES

Applying to the provision of Intrastate

EXCHANGE AND NETWORK SERVICES

within the operating territory of

Qwest Corporation d/b/a CenturyLink QC

whether offered under that name, or the trade or brand name CenturyLink

in the State of

WASHINGTON

Mailing Address: CenturyLink
100 CenturyLink Drive
Monroe, LA 71201
Email: www.centurylink.com
Unified Business Identifier (UBI):601 295 793
Telephone: (303) 992-1400

Tariff No. WN U-45 replaces Tariff No. WN U-40 (except for Maps which may retain the WN U-40 numbering system).

(T)
(T)

Qwest Corporation d/b/a CenturyLink QC

WN U-45
EXCHANGE AND
NETWORK SERVICES
WASHINGTON

SECTION 5
 Second Revised Sheet 24
 Cancels First Revised Sheet 24

5. EXCHANGE SERVICES**5.1 EXCHANGE AREAS (Cont'd)****5.1.7 MAPS**

The following exchange maps, under the jurisdiction of the Company within the State of Washington, are on file with the Washington Utilities and Transportation Commission (WUTC) and the Company.

The maps are numbered as follows:

EXCHANGE	MAP NO.	REVISION NO.
Aberdeen-Hoquiam	M-1	Original
Auburn	M-4	4th
Bainbridge Island	M-5	Original
Battleground	M-6	3rd
Belfair	M-7	Original
Bellevue	M-8	Original
Bellingham	M-9	Original
Black Diamond	M-11	1st
Bremerton	M-12	Original
Buckley	M-13	Original
Castle Rock	M-14	Original
Centralia	M-16	Original
Chehalis	M-17	Original
Clarkston	M-18	Original
Cle Elum	M-19	First
Colfax	M-20	Original
Colville	M-21	Original
Copalis	M-22	Original
Coulee Dam	M-24	Original
Crystal Mountain	M-25	Original

(T)