

WN U-2
 CenturyTel of Washington, Inc.
 Exchange and Network Services

Fifth Revised Sheet No. M1
 Cancels Fourth Revised Sheet No. M1

EXCHANGE MAPS - INDEX

All references herein to "Telephone Utilities of Washington"; "Pacific Telecom Inc. and subsidiaries"; "Telephone Utilities of WA PTI Communications"; and "PTI Communications", hereby refer to and are replaced by "CenturyTel of Washington, Inc."

<u>Exchange</u>	<u>Tariff No.</u>	<u>Sheet No.</u>	<u>Revision No.</u>
Ames Lake	WN U-1	M33	Original
Arletta (see Gig Harbor)	WN U-2	M 3	Second Revised
Basin City (see Connell)	WN U-2	M 6	Third Revised
Carnation	WN U-2	M34	Second Revised
Cheney	WN U-1	M23	Fourth Revised
Chewelah (includes former exchange of Hunters)	WN U-2	M30	Fourth Revised
Chinook (see Long Beach)	WN U-2	M2.1	Third Revised
Clearwater	WN U-1	M36	Original
Connell (includes former exchanges of Basin City, Mesa & Kahlotus)	WN U-2	M 6	Third Revised
Creston	WN U-1	M28	First Revised
Davenport	WN U-1	M27	First Revised
Elma	WN U-1	M17	First Revised
Eltopia (see Mathews Corner)	WN U-1	M10	Original
Fall City	WN U-2	M32	First Revised
Forks	WN U-2	M37	Second Revised
Fox Island (see Gig Harbor)	WN U-2	M 3	Second Revised
Gig Harbor (includes former exchanges of Arletta, Fox Island & Lakebay)	WN U-2	M 3	Second Revised
Glenoma	WN U-1	M 4	Second Revised
Kahlotus (see Connell)	WN U-2	M 6	Third Revised
Kettle Falls	WN U-1	M31	Fifth Revised
Kingston	WN U-2	M19	Second Revised
Lakebay (see Gig Harbor)	WN U-2	M 3	Second Revised
Long Beach (includes former exchanges of Chinook & Ocean Park)	WN U-2	M 2.1	Third Revised
Mathews Corner (includes former exchange of Eltopia)	WN U-2	M10	Original
McCleary	WN U-1	M16	Original
Medical Lake	WN U-1	M26	First Revised
Mesa (see Connell)	WN U-2	M 6	Third Revised
Mineral	WN U-1	M 4	Second Revised
Montesano	WN U-1	M18	Original
Morton	WN U-1	M 4	Second Revised
North Bend	WN U-2	M29	Third Revised
Ocean Park (see Long Beach)	WN U-2	M2.1	Third Revised
Ortig	WN U-1	M 5	First Revised
Packwood	WN U-2	M13	Original
Puget Island (Cathlamet)	WN U-1	M14	Original

(T)

(T)

WN U-2
 CenturyTel of Washington, Inc.
 Exchange and Network Services

Third Revised Sheet No. M2
 Cancels Second Revised Sheet No. M2

EXCHANGE MAPS - INDEX

All references herein to "Telephone Utilities of Washington"; "Pacific Telecom Inc. and subsidiaries"; "Telephone Utilities of WA PTI Communications"; and "PTI Communications", hereby refer to and are replaced by "CenturyTel of Washington, Inc."

<u>Exchange</u>	<u>Tariff No.</u>	<u>Sheet No.</u>	<u>Revision No.</u>
Randle	WN U-1	M 4	Second Revised
Rearadan	WN U-1	M25	Original
Reserved For Future Use	WN U-2	M38	First Revised
Reserved For Future Use	WN U-2	M39	First Revised
Reserved For Future Use	WN U-2	M40	First Revised
Reserved For Future Use	WN U-2	M41	Second Revised
Reserved For Future Use	WN U-2	M42	First Revised
San Juan (includes former exchanges of Blakely, East Sound, Friday Harbor & Lopez)	WN U-2	M29	Third Revised
Snoqualmie Pass	WN U-2	M35	Second Revised
South Prairie	WN U-1	M 5	First Revised
Spangle	WN U-1	M24	First Revised
Twisp (includes former exchange of Winthrop)	WN U-1	M20	Second Revised
Vashon	WN U-1	M22	First Revised
Washtucna	WN U-1	M12	Original

(T)

(T)

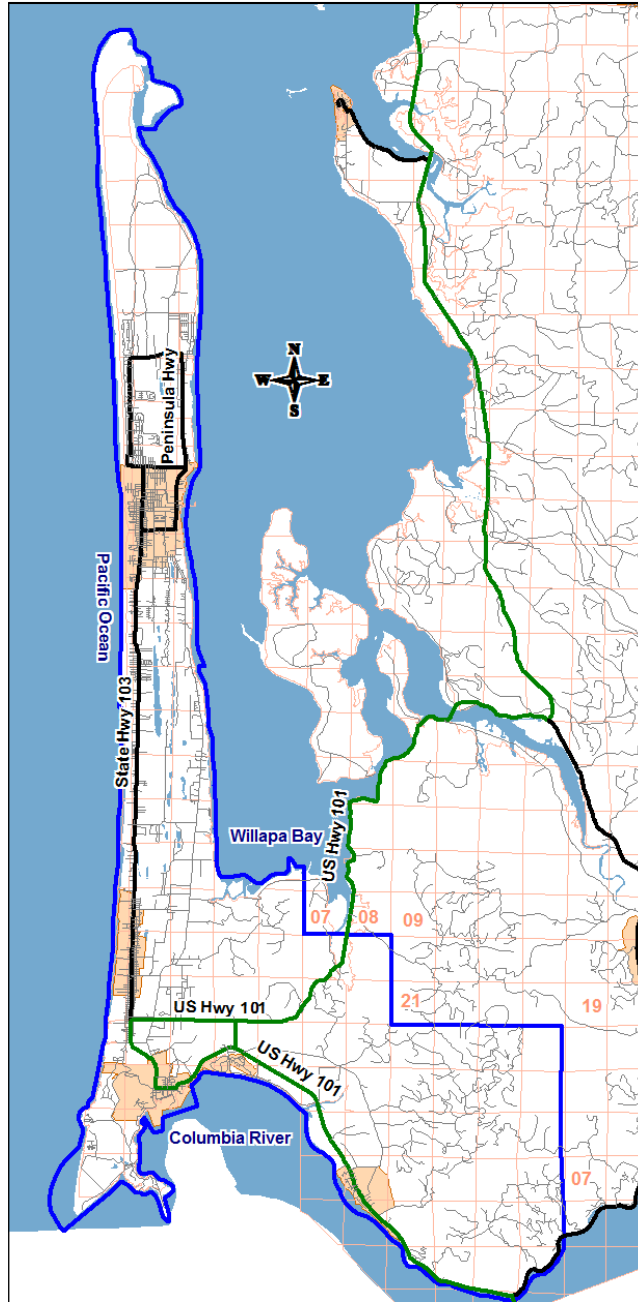
WN U-2
CenturyTel of Washington, Inc.
Exchange and Network Services

Second Revised Sheet No. M 2.1 (T)
Cancels First Revised Sheet No. M 2.1 (T)

EXCHANGE MAPS

Long Beach
(Includes Chinook & Ocean Park)

(T)

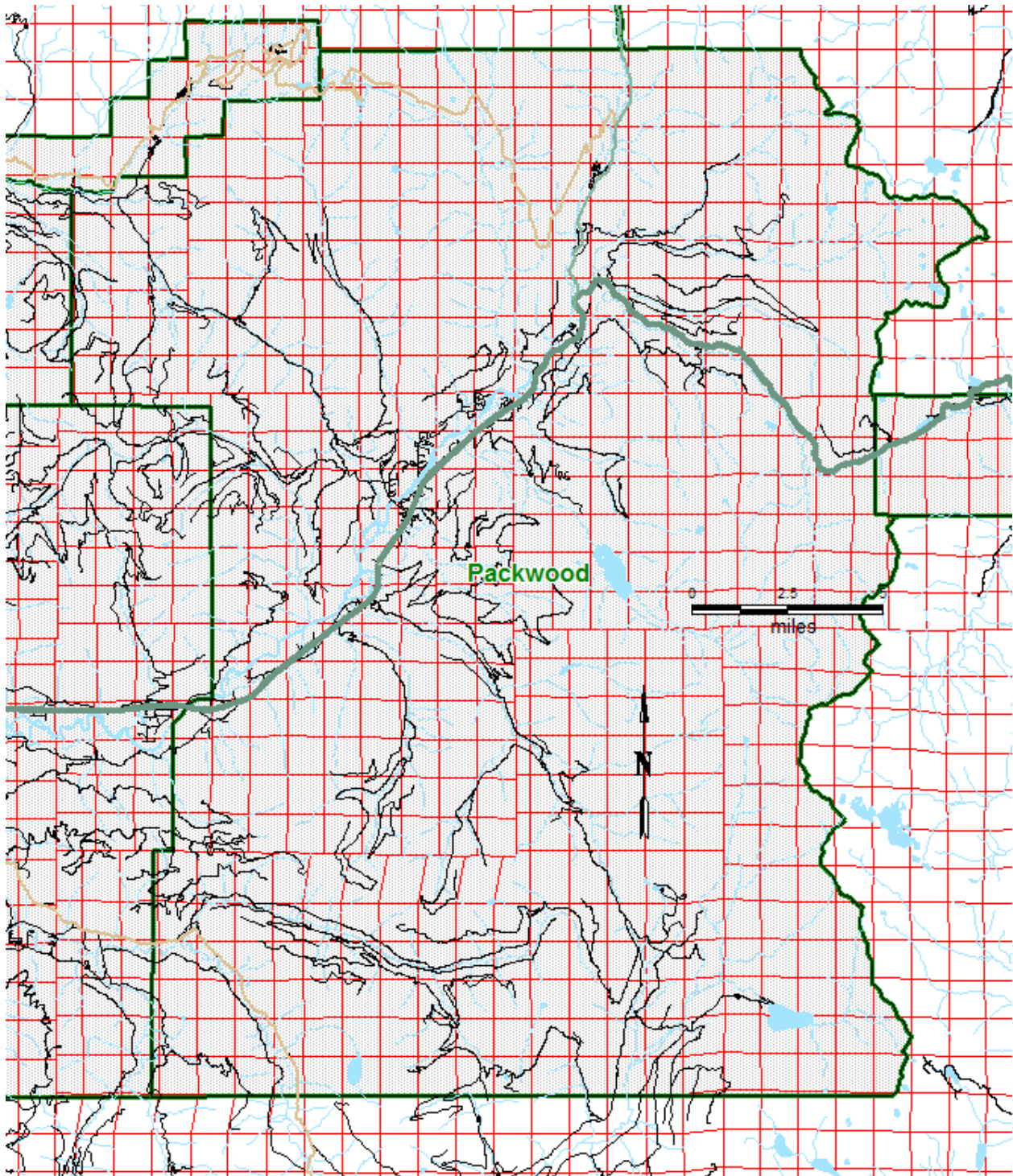


WN U-2
CenturyTel of Washington, Inc.
Exchange and Network Services

Original Sheet No. M13

EXCHANGE MAPS

Packwood



(M,C)

(M,C)

(M) Map previously located on Sheet No. M4 in WN U-1.

Advice No. WA CT 13-17
Issued By CenturyLink of Washington, Inc.
By Darlene N. Terry, Manager - Tariffs

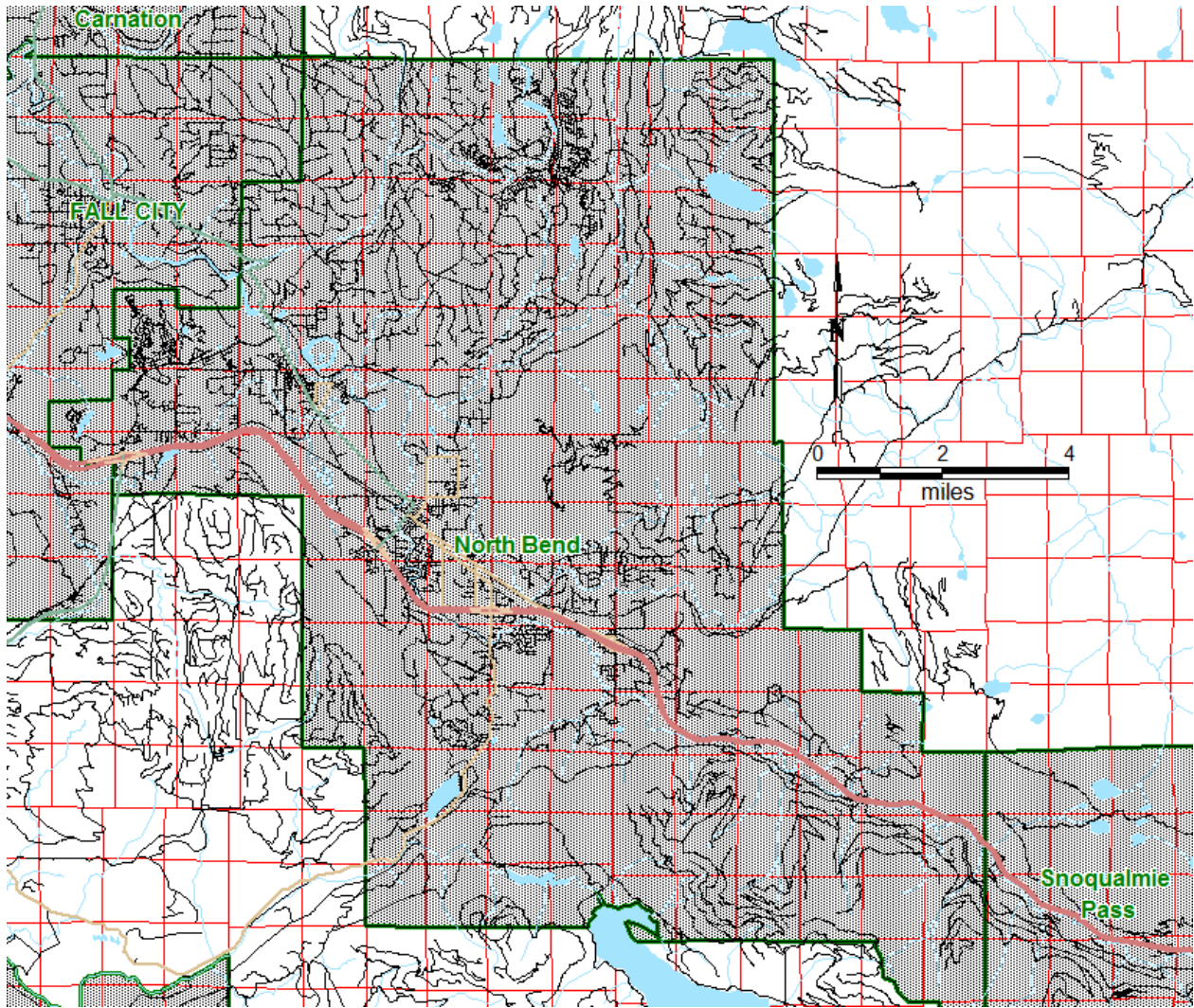
Effective: December 1, 2013

WN U-2
CenturyTel of Washington, Inc.
Exchange and Network Services

Third Revised Sheet No. M29
Cancels Second Revised Sheet No. M29

EXCHANGE MAPS

North Bend



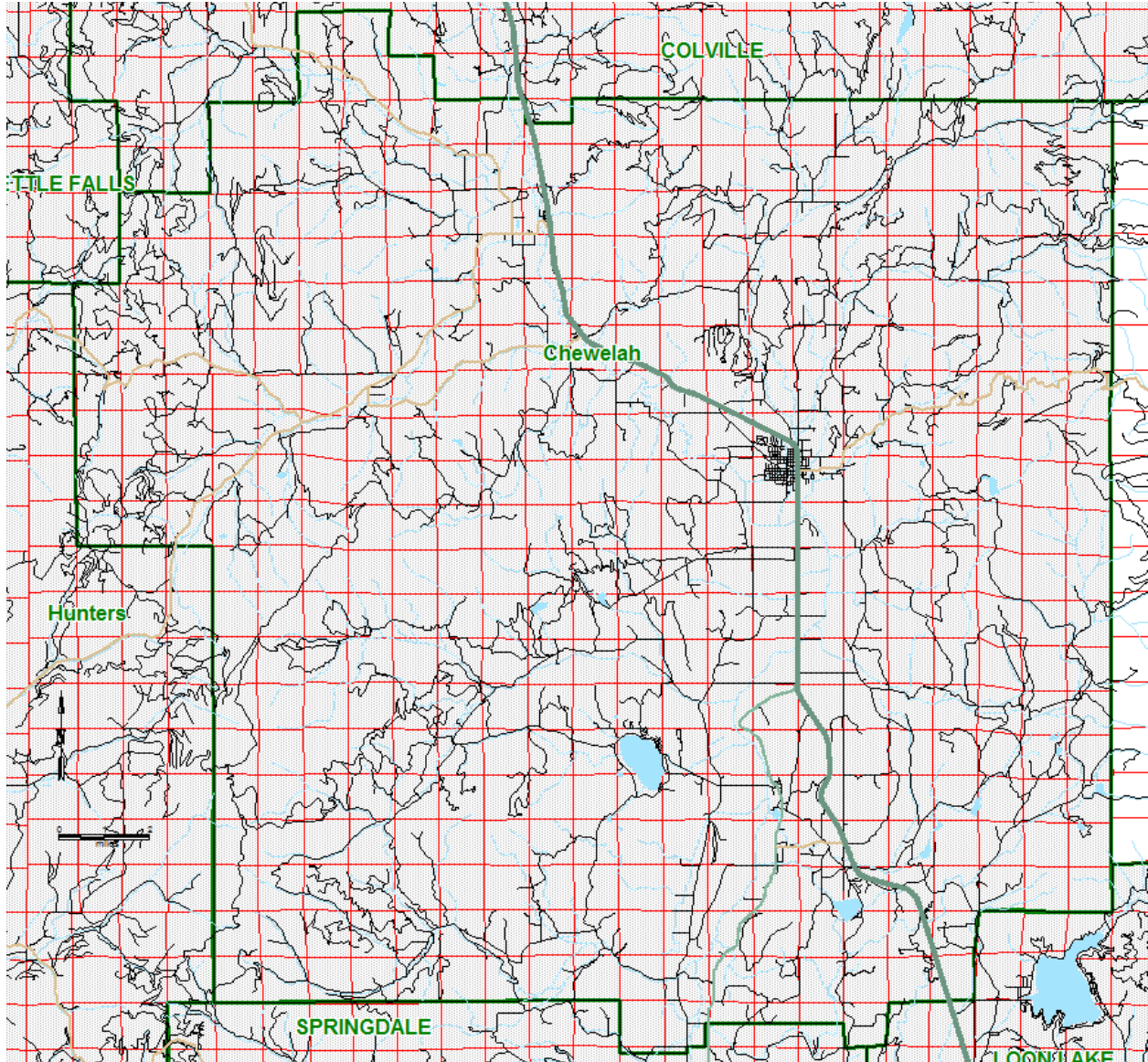
(M) Map previously located on First Revised Sheet No. M32 of WN U-1.

WN U-2
CenturyTel of Washington, Inc.
Exchange and Network Services

Fourth Revised Sheet No. M30
Cancels Third Revised Sheet No. M30

EXCHANGE MAPS

Chewelah
(Includes Hunters)



(T)

(C)

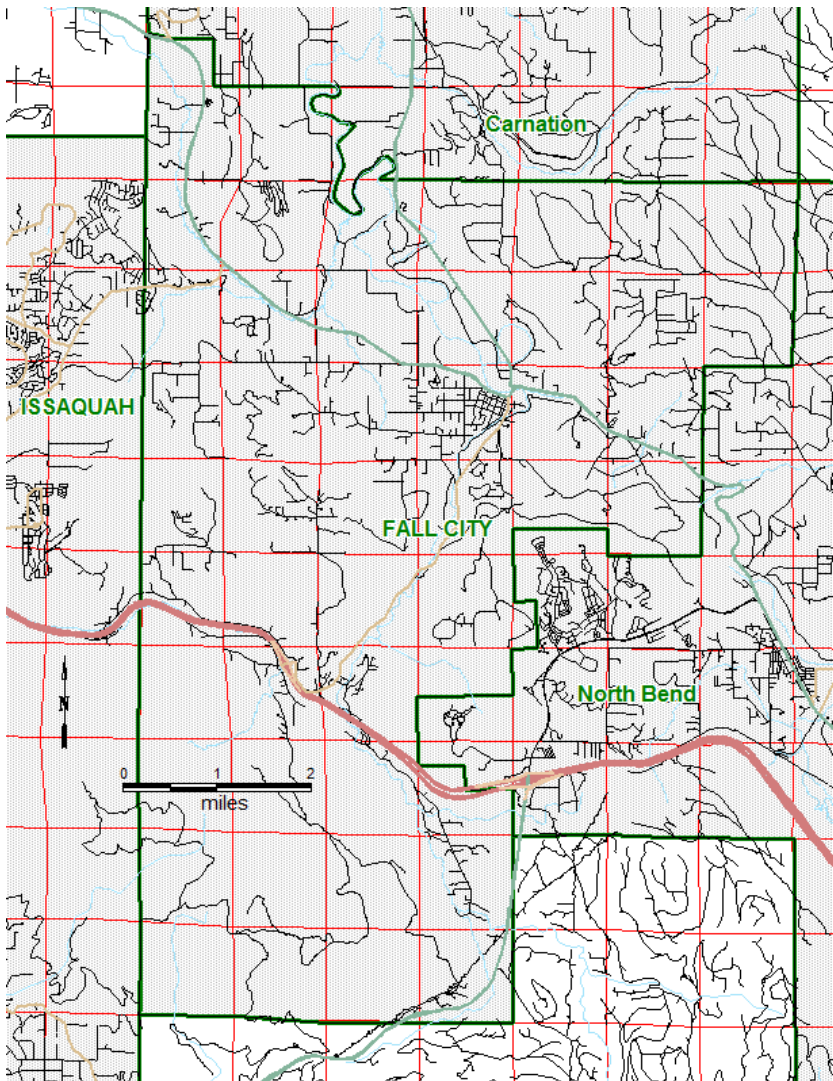
(C)

WN U-2
CenturyTel of Washington, Inc.
Exchange and Network Services

First Revised Sheet No. M32
Cancels Original Sheet No. M32

EXCHANGE MAPS

Fall City



(C)

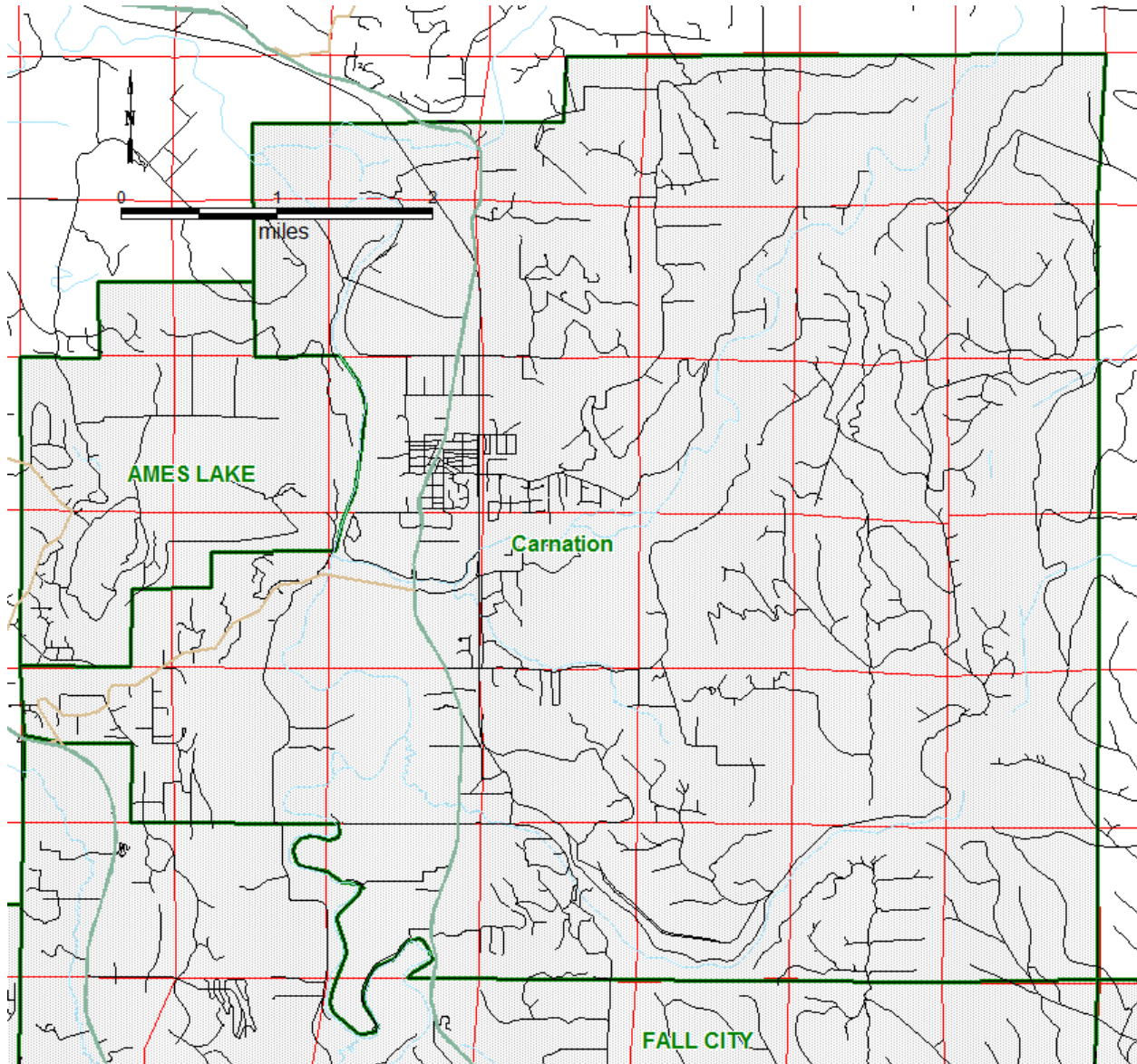
(C)

WN U-2
CenturyTel of Washington, Inc.
Exchange and Network Services

Second Revised Sheet No. M34
Cancels First Revised Sheet No. M34

EXCHANGE MAPS

Carnation

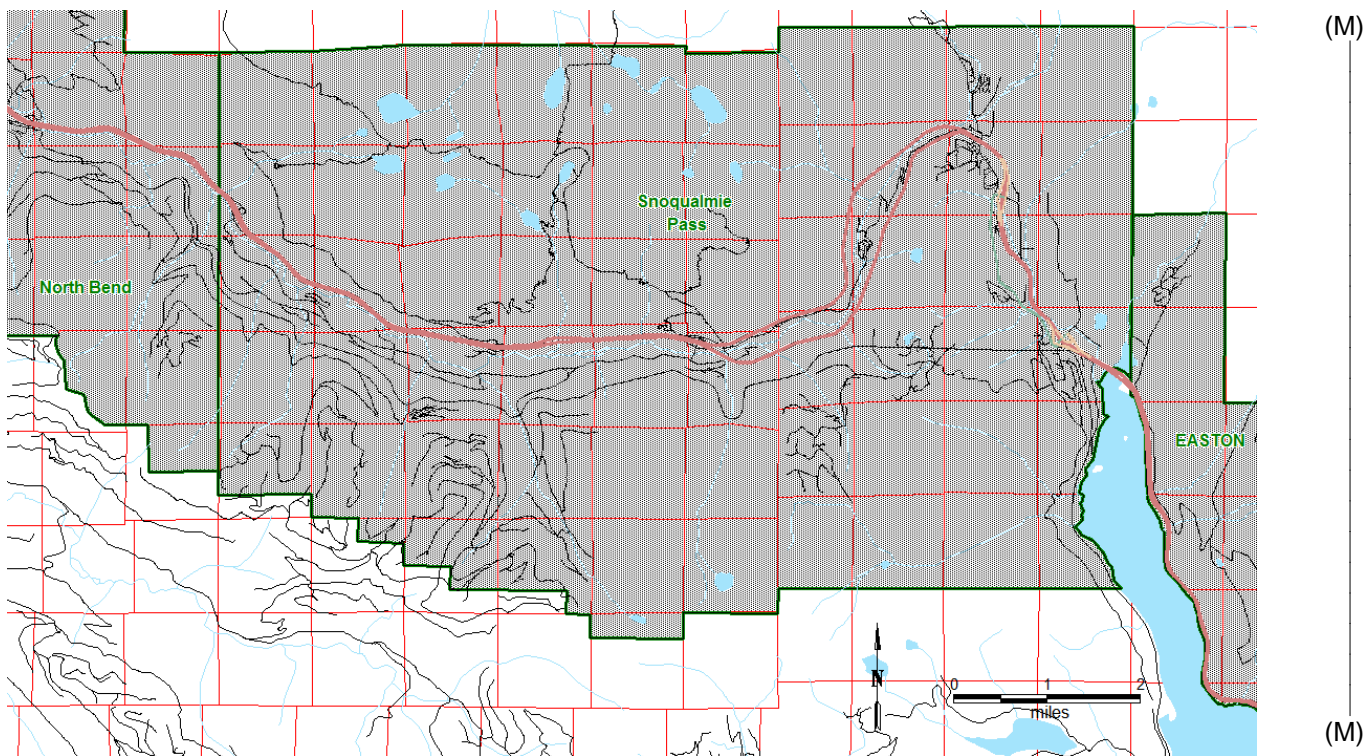


WN U-2
CenturyTel of Washington, Inc.
Exchange and Network Services

Second Revised Sheet No. M35
Cancels First Revised Sheet No. M35

EXCHANGE MAPS

Snoqualmie Pass



(M) Map previously located on First Revised Sheet No. M32 of WN U-1.

Advice No. WA CT 13-17
Issued By CenturyLink of Washington, Inc.
By Darlene N. Terry, Manager - Tariffs

Effective: December 1, 2013