

**BEFORE THE WASHINGTON UTILITIES
AND TRANSPORTATION COMMISSION**

UG-_____

NORTHWEST NATURAL GAS COMPANY

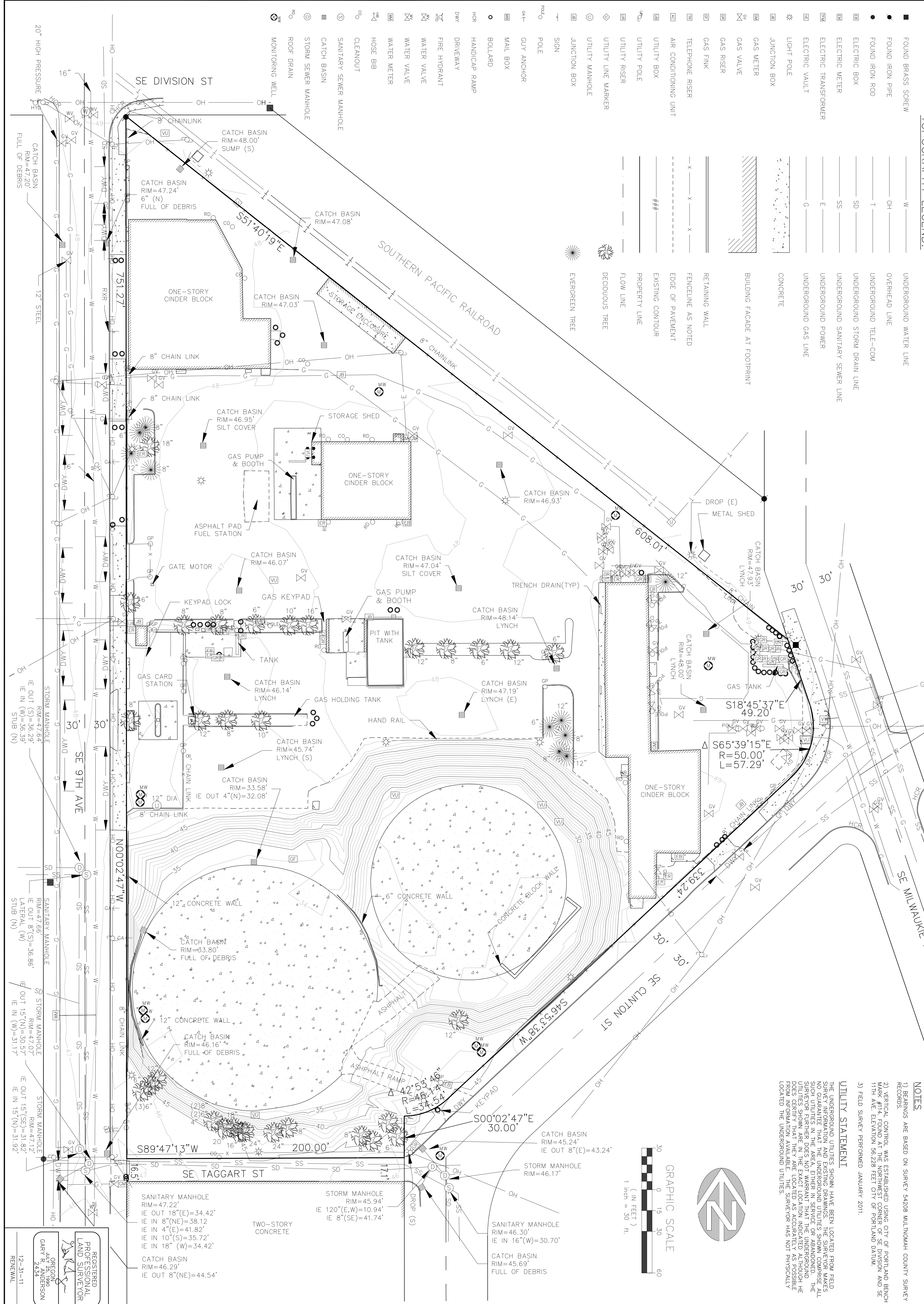
**Application for an Order
Determining that the Central
Property is No Longer Useful or,
in the Alternative, an Order Authorizing
the Sale of the Central Property**

Exhibit A

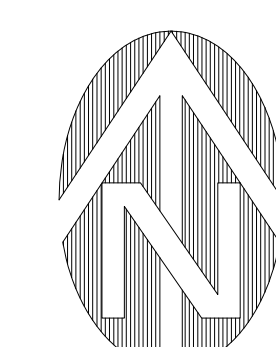
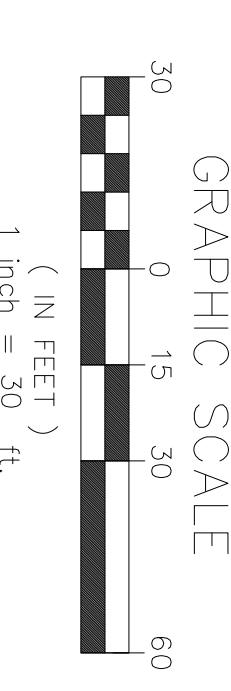
August 22, 2013

TOPOGRAPHY LEGEND:

■	FOUND BRASS SCREW	— W —	UNDERGROUND WATER LINE
●	FOUND IRON PIPE	— OH —	OVERHEAD LINE
●	FOUND IRON ROD	— T —	UNDERGROUND TELE-COM
●	ELECTRIC BOX	— SD —	UNDERGROUND STORM DRAIN LINE
●	ELECTRIC METER	— SS —	UNDERGROUND SANITARY SEWER LINE
●	ELECTRIC TRANSFORMER	— E —	UNDERGROUND POWER
●	ELECTRIC VAULT	— G —	UNDERGROUND GAS LINE
●	LIGHT POLE	— C —	CONCRETE
●	JUNCTION BOX	—	BUILDING FACADE AT FOOTPRINT
●	GAS METER	—	RETAINING WALL
●	GAS VALVE	—	FENCELINE AS NOTED
●	GAS RISER	—	EDGE OF PAVEMENT
●	GAS FINK	—	EXISTING CONTOUR
●	TELEPHONE RISER	—	PROPERTY LINE
●	AIR CONDITIONING UNIT	—	FLOW LINE
●	UTILITY BOX	—	DECIDUOUS TREE
●	UTILITY POLE	—	EVERGREEN TREE
●	UTILITY RISER	—	
●	UTILITY LINE MARKER	—	
●	UTILITY MANHOLE	—	
●	JUNCTION BOX	—	
●	SIGN	—	
●	POLE	—	
●	GUY ANCHOR	—	
●	MAIL BOX	—	
●	BOLLARD	—	
●	HANDICAP RAMP	—	
●	DRIVEWAY	—	
●	FIRE HYDRANT	—	
●	WATER VALVE	—	
●	WATER VALVE	—	
●	WATER METER	—	
●	HOSE BIB	—	
●	CLEANOUT	—	
●	SANITARY SEWER MANHOLE	—	
●	CATCH BASIN	—	
●	STORM SEWER MANHOLE	—	
●	ROOF DRAIN	—	
●	MONITORING WELL	—	



- NOTES**
- 1) BEARINGS ARE BASED ON SURVEY 54208 MULTNOMAH COUNTY SURVEY RECORDS.
 - 2) VERTICAL CONTROL WAS ESTABLISHED USING CITY OF PORTLAND BENCH MARK #14, FOUND AT THE NORTHWEST CORNER OF SE DIVISION AND SE 11TH AVE. ELEVATION 56.229 FEET CITY OF PORTLAND DATUM.
 - 3) FIELD SURVEY PERFORMED JANUARY 2011.
- UTILITY STATEMENT**
- THE UNDERGROUND UTILITIES SHOWN HAVE BEEN LOCATED FROM FIELD SURVEY INFORMATION AND EXISTING RECORDS. THE SURVEYOR MAKES NO GUARANTEE AS TO THE ACCURACY OF THE UTILITIES SHOWN. SUCH UTILITIES IN THE AREA, EITHER IN SERVICE OR ABANDONED, THE SURVEYOR FURTHER DOES NOT WARRANT THAT THE UNDERGROUND UTILITIES SHOWN ARE IN THE EXACT LOCATION INDICATED ALTHOUGH THE UTILITIES SHOWN ARE THE BEST LOCATION AS ACCURATELY AS POSSIBLE FROM THE AVAILABLE INFORMATION. THE SURVEYOR HAS NOT PHYSICALLY LOCATED THE UNDERGROUND UTILITIES.



REGISTERED PROFESSIONAL LAND SURVEYOR
GARY R. ANDERSON
2454
12-31-11
RENEWAL

NO.	DATE	DESCRIPTION	DESIGN BY:	DRAFT BY:	CHECK BY:	ENGR. BY:	CAD COMP.
1	2011FEB08	INITIAL RELEASE					

NO.	DATE	DESCRIPTION	DESIGN BY:	DRAFT BY:	CHECK BY:	ENGR. BY:	CAD COMP.

TOPOGRAPHIC SURVEY
FOR: NW NATURAL
NW 1/4, SEC 11, T 1 S, R 1 E, WM
CITY OF PORTLAND, MULTNOMAH COUNTY, OREGON

WESTLAKE CONSULTANTS INC.
ENGINEERING • SURVEYING • PLANNING
PACIFIC CORPORATE CENTER
15115 S.W. SEQUOIA PARKWAY, SUITE 150 TIGARD, OREGON 97224
(503) 684-0652
FAX (503) 624-0157