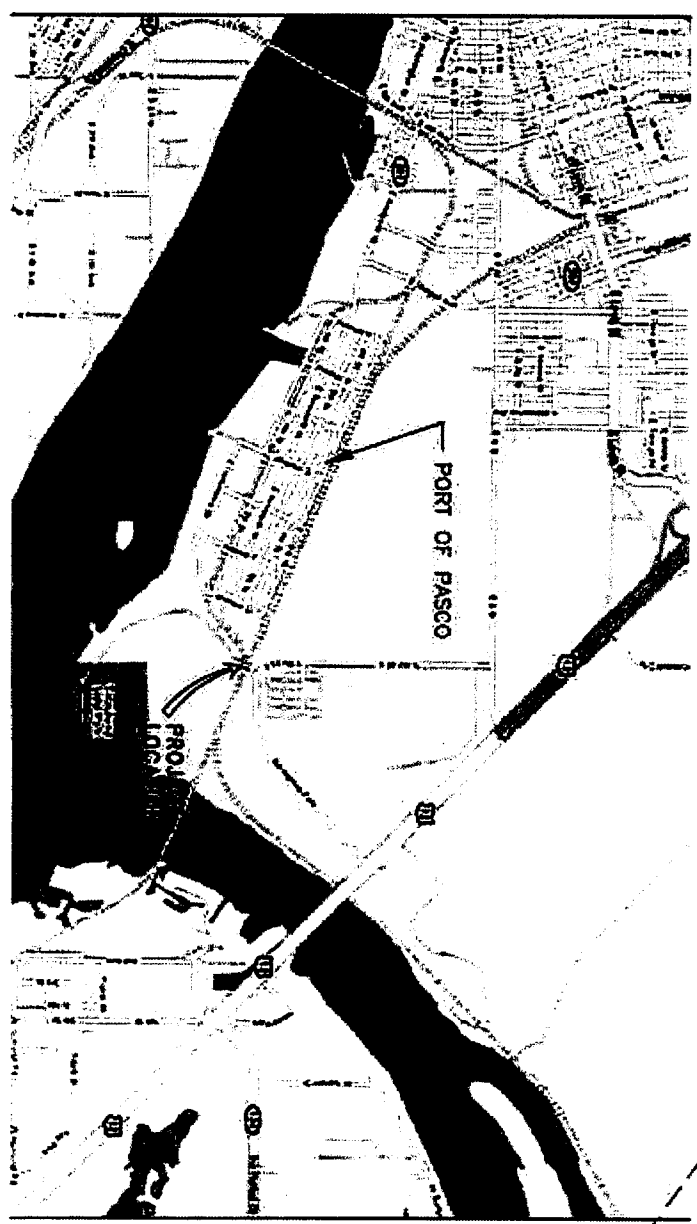


**BNSF ENGINEER:**  
 BNSF has reviewed these plans and no exceptions are taken with regard to BNSF's ability to use the project as intended. BNSF has not reviewed the design details or calculations for structural integrity of engineering for accuracy. BNSF accepts no responsibility for errors or omissions in the design of the project.  
*26 [Signature]*  
 27 May 09



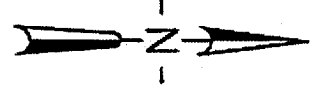
**LEGEND**

—	NEW TRACK
- - -	EXISTING TRACK
▬▬▬▬	EXISTING ASPHALT
▬▬▬▬	NEW ASPHALT (PATCH)

**NOTE:**  
 ALL TRACK INFORMATION AND SACAJAWEA ROAD SOUTH OF THE BNSF MAINLINE CROSSING WAS OBTAINED FROM SITE SURVEY DATA. EXISTING SACAJAWEA ROAD INFORMATION IS DERIVED FROM AERIAL PHOTOS AND IS APPROXIMATE.

**PRELIMINARY  
 NOT FOR CONSTRUCTION**

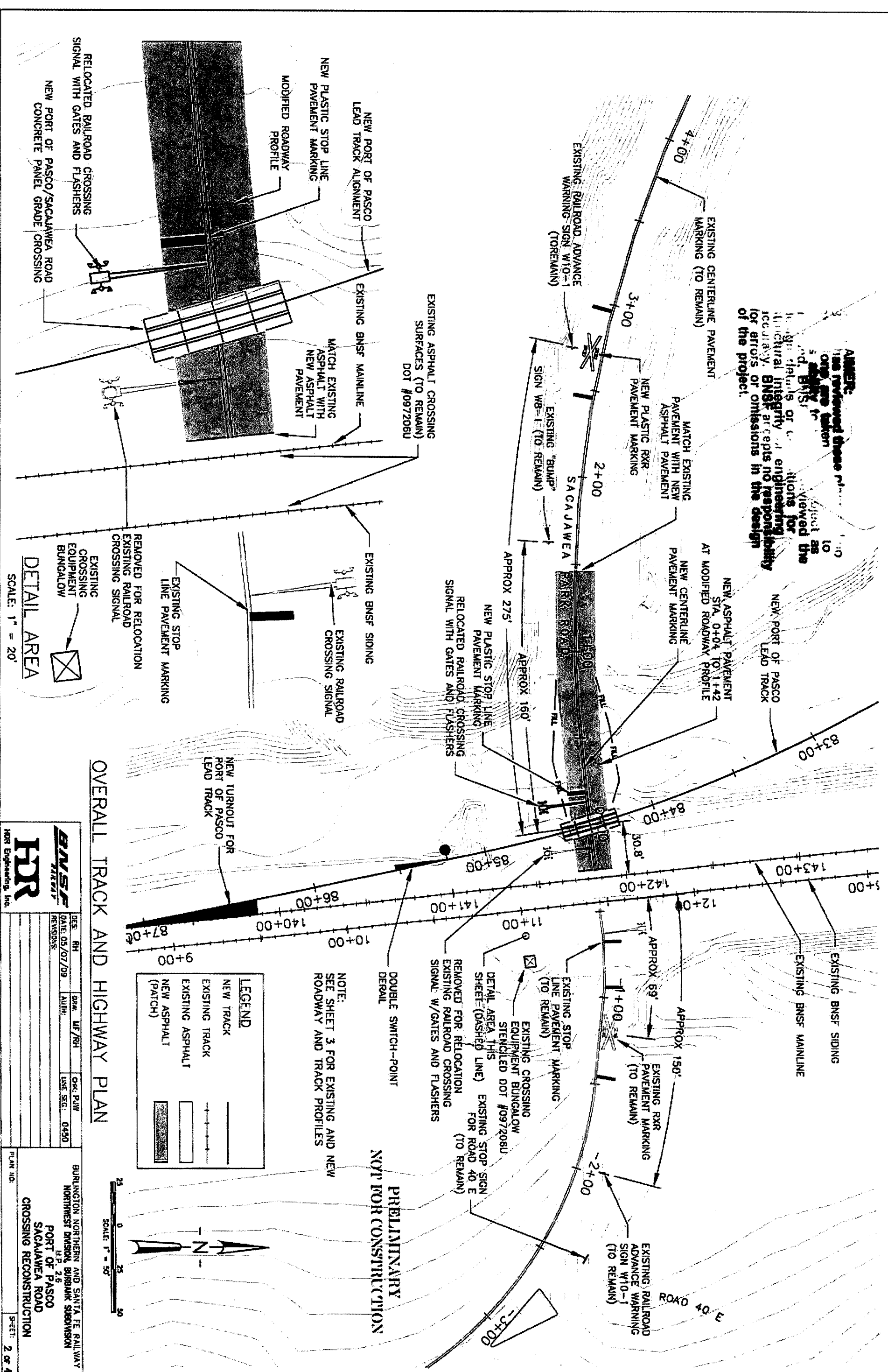
**OVERALL TRACK AND ROADWAY PLAN**



VICINITY MAP  
 N.T.S.

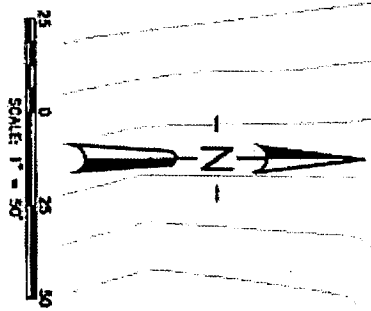
<b>BNSF</b>		<b>HRR</b>	
DES: RH	DWG: ME/RH	CYC: P/W	LINE SECT: 0450
DATE: 05/07/09	AUTH:		
REVISIONS:			
BURLINGTON NORTHERN AND SANTA FE RAILWAY NORTHWEST DIVISION, BURBANK SUBDIVISION L.P. 2.5 PORT OF PASCO SACAJAWEA ROAD CROSSING RECONSTRUCTION			
PLAN NO:	SHEET: 1	OF: 4	

**ALERT:**  
 This drawing has been reviewed and approved by the Engineer of Record, BNSF Railway Company, for the project. BNSF Railway Company accepts no responsibility for errors or omissions in the design of the project.

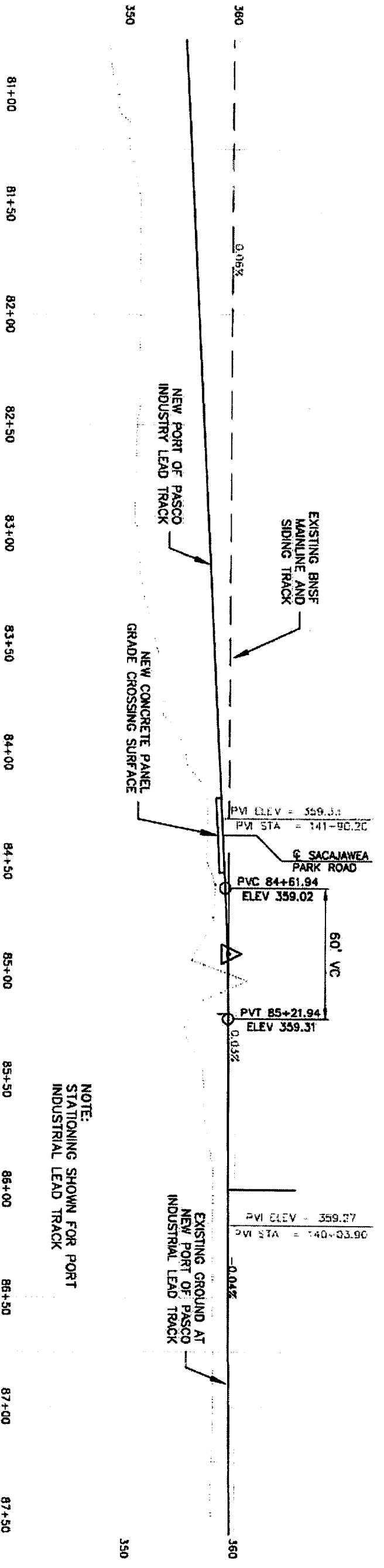


LEGEND	
	NEW TRACK
	EXISTING TRACK
	EXISTING ASPHALT
	NEW ASPHALT (PATCH)

**OVERALL TRACK AND HIGHWAY PLAN**



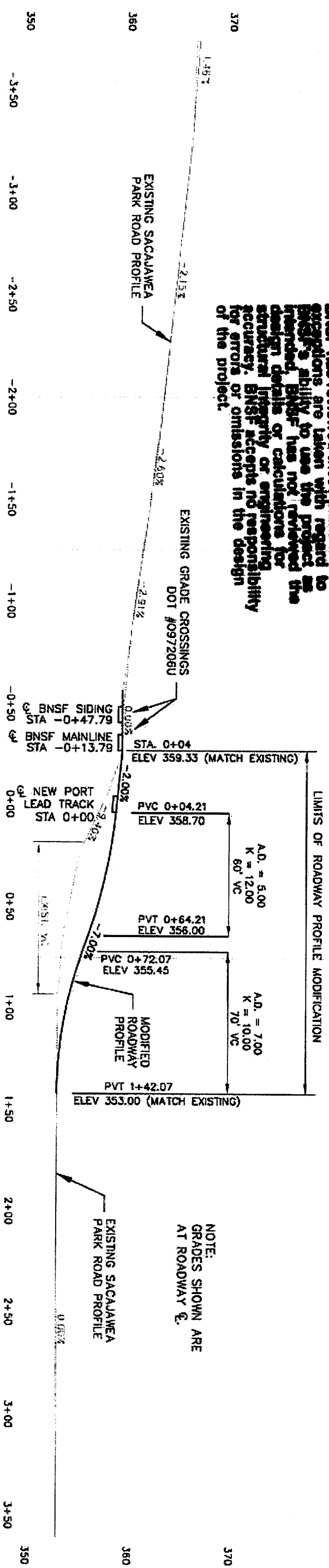
<b>BNSF</b> RAILWAY		DATE: 05/07/09	APP: [ ]	LINE SEG: 0420
DES: RH	CHK: MF/RL	DESIGNED BY: [ ]	DATE: [ ]	SCALE: [ ]
<b>HDR</b> HDR Engineering, Inc.				
BURLINGTON NORTHERN AND SANTA FE RAILWAY NORTHWEST DIVISION, BUNGALOW SUBDIVISION PORT OF PASCO SACAJAWEA ROAD CROSSING RECONSTRUCTION				
PLAN NO:	SHEET: 2 OF 4			



**PORT INDUSTRIAL LEAD TRACK, BNSF MAINLINE, AND BNSF SIDING PROFILE**

SCALE: HORI 1" = 100'  
VERT 1" = 5'

**DISCLAIMER:**  
BNSF has reviewed these plans and no exceptions are taken with regard to BNSF's ability to use the project as intended. BNSF has not reviewed the design details or calculations for structural integrity or engineering accuracy. BNSF accepts no responsibility for errors or omissions in the design of the project.



**SACAJAWEA PARK ROAD PROFILE MODIFIED**

SCALE: HORI 1" = 100'  
VERT 1" = 5'

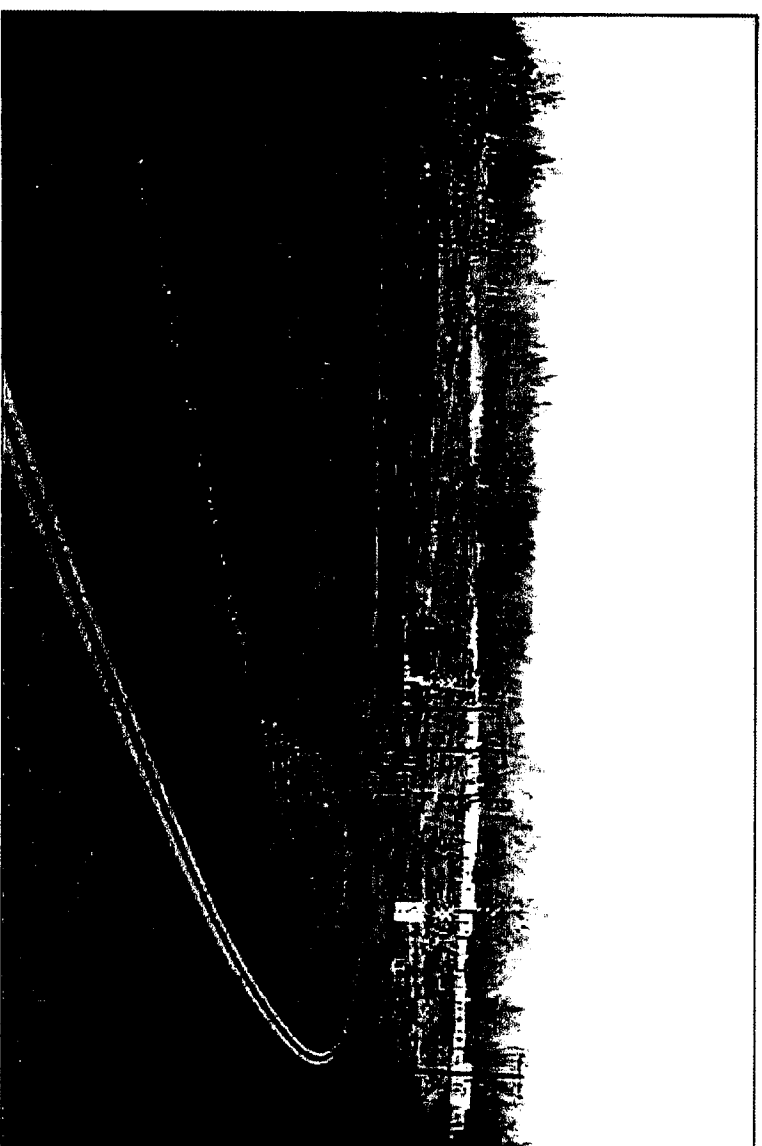
NOTE:  
GRADES SHOWN ARE AT ROADWAY  $\phi$ .

**PRELIMINARY  
NOT FOR CONSTRUCTION**

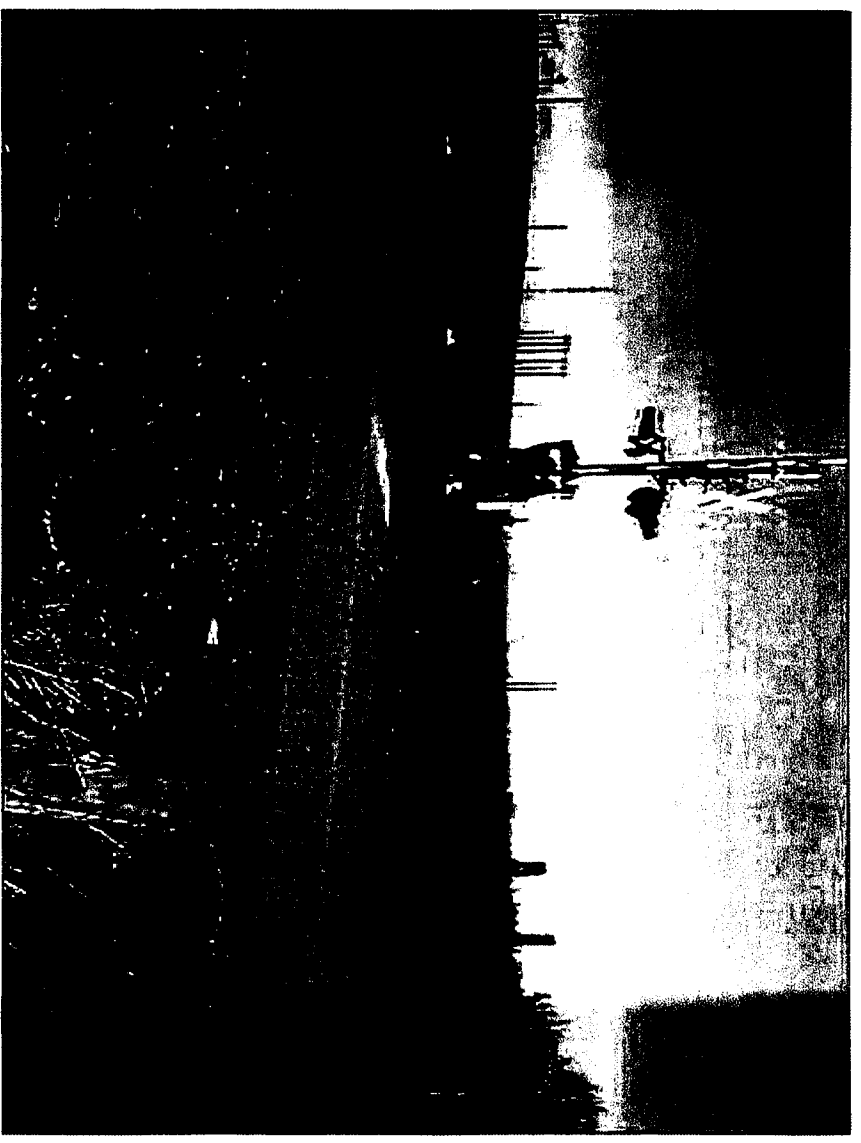
<b>BNSF</b>		<b>HDR</b>	
DATE: 05/07/09	DRW: MF/RH	CHEK: PJW	LINE SEG: 0450
REVISIONS:			
BURLINGTON NORTHERN AND SANTA FE RAILWAY NORTHWEST DIVISION, BURBANK SUBDIVISION M.P. 2.6 PORT OF PASCO SACAJAWEA ROAD CROSSING RECONSTRUCTION			
PLAN NO:	SHEET:		3 OF 4



SOUTH SIDE OF SACAJAWEA ROAD CROSSING - VIEW WEST  
NEW PORT INDUSTRIAL LEAD TRACK SHOWN AS RED LINE



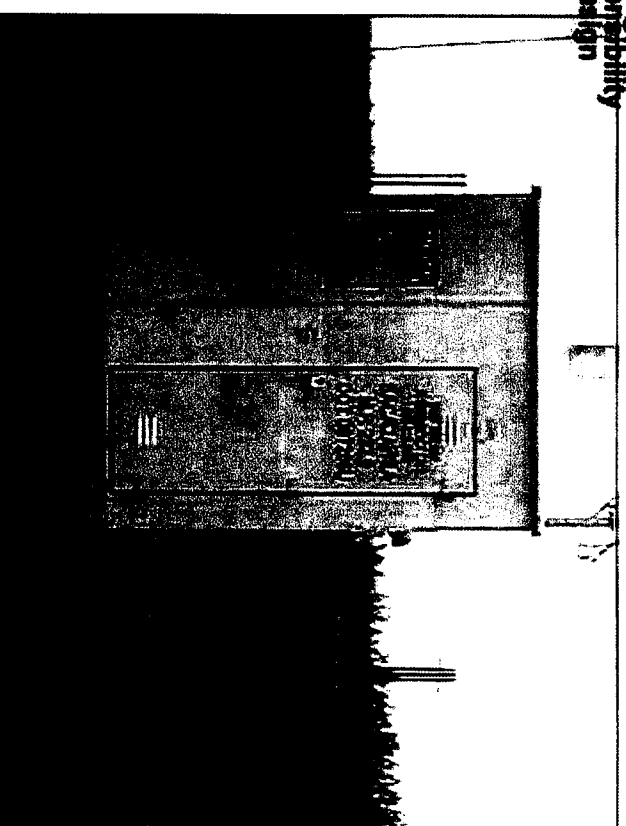
EXISTING SACAJAWEA PARK ROAD CROSSING - VIEW NORTH



EAST SIDE OF SACAJAWEA ROAD CROSSING - VIEW EAST  
NEW PORT INDUSTRIAL LEAD TRACK SHOWN AS RED LINE

**DISCLAIMER:**  
BNSF has reviewed these plans and no exceptions are taken with regard to BNSF's ability to use the project as intended. BNSF has not reviewed the design details or calculations for structural integrity or engineering accuracy. BNSF accepts no responsibility for errors or omissions in the design of the project.

PRELIMINARY  
NOT FOR CONSTRUCTION



EXISTING GRADE CROSSING CONTROL BUNGALOW

<b>BNSF</b> RAILWAY		<b>HDR</b> Engineering, Inc.	
DES. BY RH	CHECKED BY MF/RH	DATE 05/07/09	PROJECT NO. 0250
REVISIONS		SHEET NO. 4 OF 4	
BURLINGTON NORTHERN AND SANTA FE RAILWAY NORTHWEST DIVISION, BURBANK SUBDIVISION U.P. 219 PORT OF PASCO SACAJAWEA ROAD CROSSING RECONSTRUCTION			