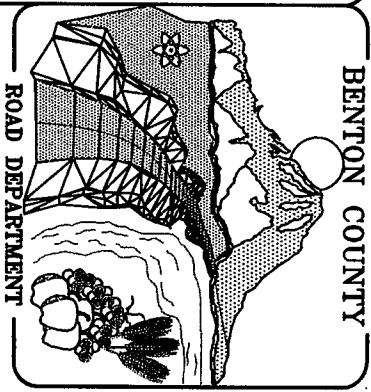


LEGEND

- ▬ LIMITS OF NEW PAVEMENT
- ▨ LIMITS OF PAVEMENT REMOVAL
- BORING DESIGNATION AND APPROXIMATE LOCATION



**WEBBER CANYON
ROAD UNDERPASS
BNSF RAILWAY
ROADWAY**

CES, Inc.
Consulting Engineering Services
1211 Fourth Avenue East
Olympia, Washington 98505-4211
Tel: (360) 752-2189 Fax: (360) 752-2187

DRAFT
NOT FOR CONSTRUCTION

PREPARED UNDER
THE DIRECTION OF
& APPROVED BY:

ENGINEER
DATE:

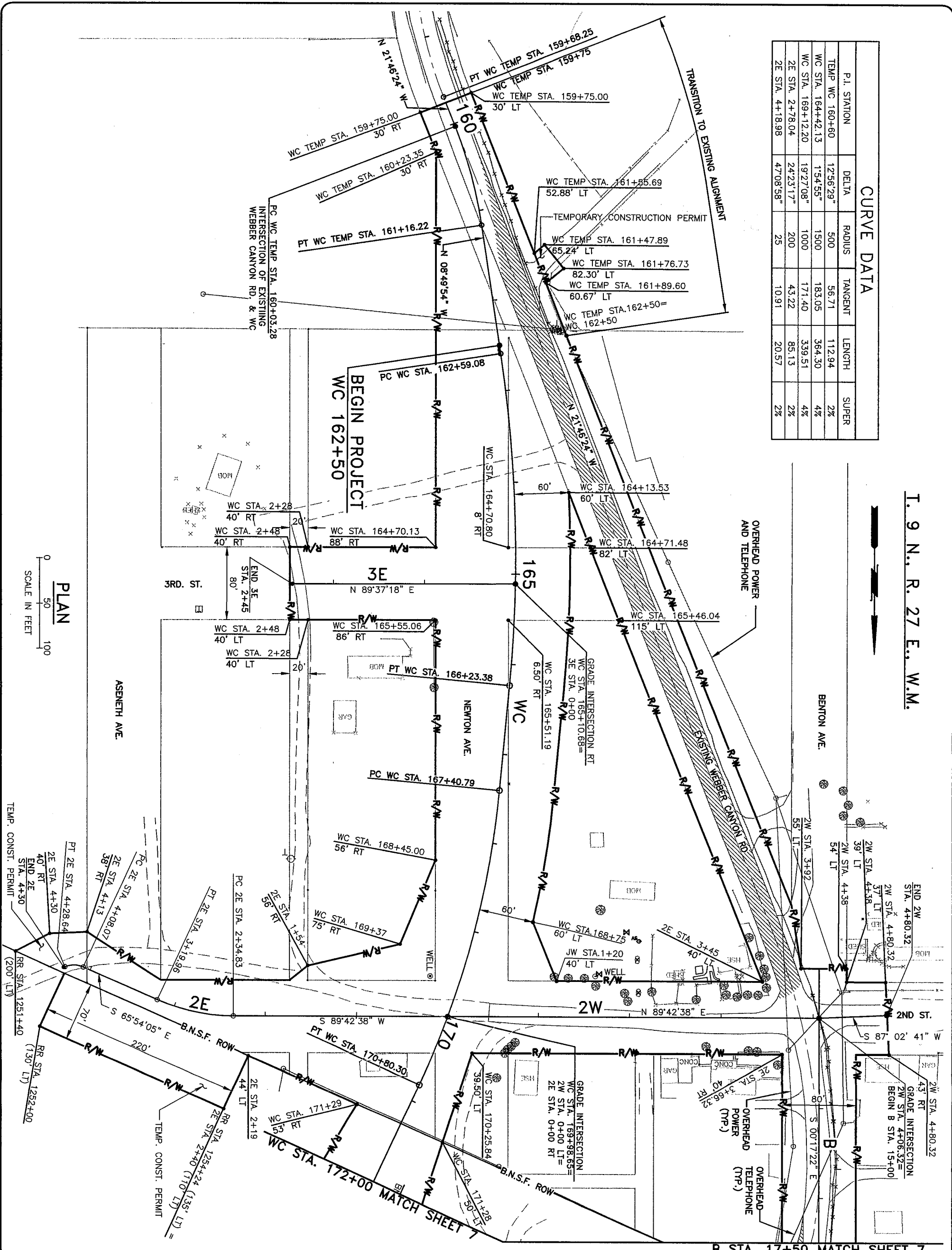
**CALL TWO WORKING DAYS
BEFORE YOU DIG**
1-800-424-6565

ALL UNDERGROUND UTILITIES AND STRUCTURES
ARE NOT SHOWN. THE LOCATION OF THESE
SHOWN ARE APPROXIMATE. THE CONTRACTOR
IS RESPONSIBLE TO FIELD VERIFY BOTH
UNDERGROUND & ABOVE GROUND EXISTING
CONDITIONS. NOTIFY ENGINEER FOR RESOLUTION
OF CONFLICTS.

DR'N:	D.R.T.
DATE:	3/05
SCALE:	
REVISION:	

**SITE PLAN
S1**

CURVE DATA					
P.I. STATION	DELTA	RADIUS	TANGENT	LENGTH	SUPER
TEMP WC 160+60	1256'29"	500	56.71	112.94	2%
WC STA. 164+42.13	154'55"	1500	183.05	364.30	4%
WC STA. 169+12.20	19'27'08"	1000	171.40	339.51	4%
2E STA. 2+78.04	24'23'17"	200	43.22	85.13	2%
2E STA. 4+18.98	47'08'58"	25	10.91	20.57	2%

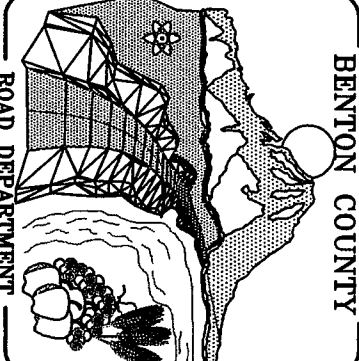


I. 9 N. R. 27 E., W.M.

PLAN

SCALE IN FEET
0 50 100

B STA. 17+50 MATCH SHEET 7



WEBBER CANYON ROAD UNDERPASS BNSF RAILWAY ROADWAY

CES, Inc.
Consulting Engineering Services
1314 First Avenue East
Olympia, Washington 98506-4211
Tel: (360) 705-2188 Fax: (360) 705-2187

DRAFT NOT FOR CONSTRUCTION

PREPARED UNDER THE DIRECTION OF & APPROVED BY:

DATE: _____ ENGINEER

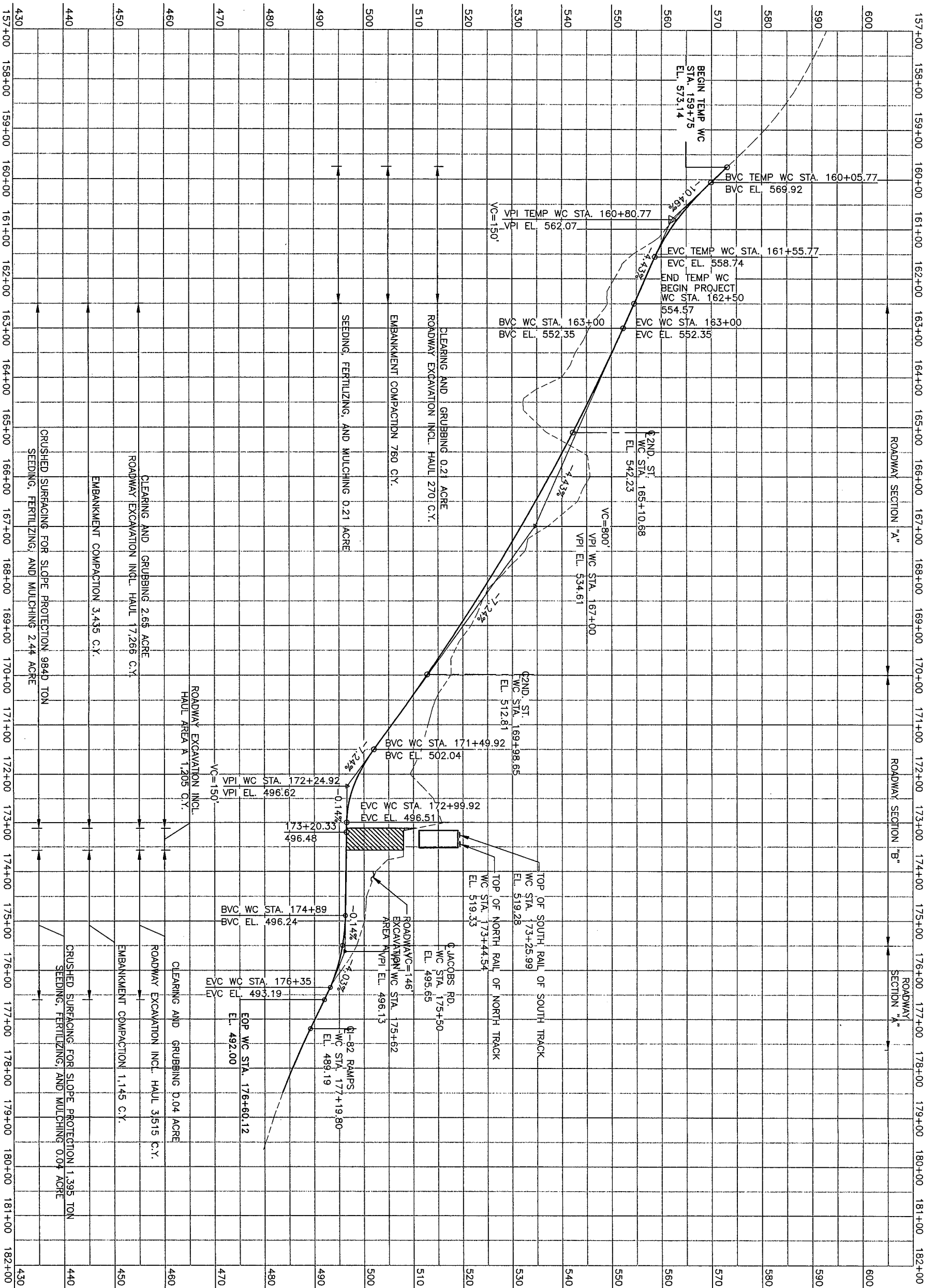
CALL TWO WORKING DAYS BEFORE YOU DIG 1-800-424-6666

ALL UNDERGROUND UTILITIES AND STRUCTURES ARE NOT SHOWN. THE LOCATION OF THOSE SHOWN ARE APPROXIMATE. THE CONTRACTOR IS RESPONSIBLE TO FIELD VERIFY BOTH UNDERGROUND AND ABOVE GROUND EXISTING CONDITIONS. NOTIFY ENGINEER FOR RESOLUTION OF CONFLICTS.

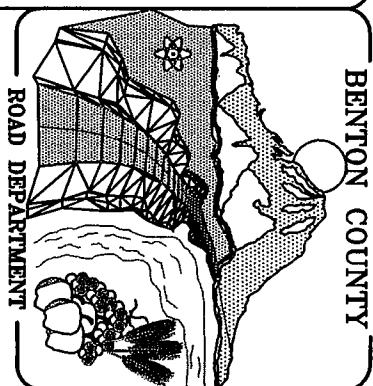
DR.N:	D.R.T.
DATE:	2/05
SCALE:	AS SHOWN
REVISION:	

ALIGNMENT/SITE PREPARATION A1

SHEET 6 OF 25



WC PROFILE



**WEBBER CANYON
ROAD UNDERPASS
BNSF RAILWAY
ROADWAY**

CES, Inc.
Consulting Engineering Services
1211 Faint Avenue East
Olympia, Washington 98506-4211
Tel: (360) 705-2185 Fax: (360) 705-2187

DRAFT
NOT FOR CONSTRUCTION

PREPARED UNDER
THE DIRECTION OF
& APPROVED BY:

EUGENE R. BRICK
PROFESSIONAL ENGINEER
STATE OF WASHINGTON
No. 13887
EXPIRES 03-16-05

ENGINEER

**CALL TWO WORKING DAYS
BEFORE YOU DIG
1-800-424-6555**

ALL UNDERGROUND UTILITIES AND STRUCTURES ARE NOT SHOWN. THE LOCATION OF THOSE SHOWN ARE APPROXIMATE. THE CONTRACTOR IS RESPONSIBLE TO FIELD VERIFY BOTH UNDERGROUND & ABOVE GROUND EXISTING CONDITIONS. NOTIFY ENGINEER FOR RESOLUTION OF CONFLICTS.

DR'N:	D.R.T.
DATE:	2/05
SCALE:	HORIZ. 1"=100' VERT. 1"=10'
REVISION:	

**ROADWAY PROFILES
RP1**