

BEFORE THE WASHINGTON UTILITIES AND TRANSPORTATION COMMISSION

)
)
The Burlington Northern and)
Santa Fe Railway Company)
Petitioner,)
)
vs.)
)
Mt. Vernon, Washington)
)
Respondent)
)

DOCKET NO. TR-

PETITION FOR MODIFICATION OF
DETECTGION CIRCUITRY

WUTC No. 2B 67.60
DOT No. 084-741T

RECEIVED
 RECORDS MANAGEMENT
 03 APR 24 AM 8:16
 STATE OF WASH.
 UTIL. AND TRANSP.
 COMMISSION

Petitioner request the Washington Utilities and Transportation Commission to enter an order consenting to the modification of detection circuitry for a grade crossing signal system as follows:

1. Identifying information for the crossing:

Existing highway, street or road: Blackburn Road

Existing Railway The Burlington Northern and Santa Fe Railway

WUTC Crossing Number: 2B 67.60

DOT Number 084-741T

2. Description of current signals and/or gates at the crossing:

Cantilevered flashing light traffic control devices with gates.

3. Type of current crossing circuitry:

Constant Warning Devices.

4. Project description and justification:

(a) Proposed changes: Provide Simultaneous Pre-emption

(b) Justification for changes: Provide an intertie to proposed traffic signals

(c) Affects of proposed changes on warning devices and warning times for drivers:


None

5. **Drawings.** Sketches drawn to scale are attached accurately showing the current and proposed layout of the highway (including shoulders, sidewalks, lanes of travel, bike lanes and crossing warning devices), of the crossing surface and of the railway in the vicinity of the crossing.

I certify under penalty of perjury that the foregoing is true and correct

Dated at Seattle, Washington this 7th day of April, 2003

The Burlington Northern & Santa Fe Ry.
Petitioner



By: Title: Manager Public Projects

2454 Occidental Avenue So., Suite 1-A
Address

Seattle, Washington 98134

WAIVER OF HEARING BY RESPONDENT

The respondent has investigated the conditions existing at and in the vicinity of the grade crossing described herein and is satisfied that such conditions are substantially as described in the petition. Respondent consents to the modification of the signal system circuitry as described in the petition. Hearing in this proceeding is hereby waived.

Dated at MOUNT VERNON, Washington, on the 22 day of APRIL, 2003

Mt. Vernon, Washington

Respondent



By:

FRED BUCKENMEYER
ENGINEERING SERVICES MANAGER

(Address)

1024 Cleveland Avenue
P.O. Box 809
Mt. Vernon, WA. 98273

INSTRUCTIONS

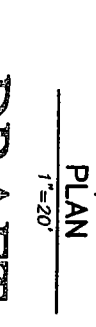
Petitioner can be the railroad, the road authority or the Washington Utilities and Transportation Commission. If the railroad is the petitioner, the road authority will be the respondent. If the road authority is the petitioner, the railroad will be the respondent.

The original and two copies of the petition must be filed with the Washington Utilities and Transportation Commission.

If the waiver of hearing is executed, the petition be investigated and a decision made within approximately two weeks from receipt of the documents.

If the waiver of hearing is not executed on the petition filed, a copy of the petition will be served upon the respondent by the Commission for answer within 20 days. Upon receipt of respondent's answer or after the 20 day period has elapsed, the application will be processed. Time for making a decision will depend on whether an answer is filed and the content of the answer.

NO.	REVISIONS	DATE	BY	DESIGNED	DRAWN	CHECKED
				B. FRANKLIN	C. DYER	

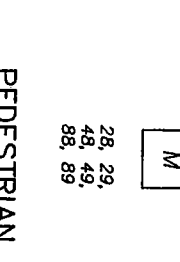
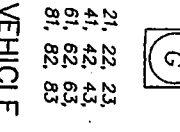


Parametrix, Inc. Quality Service Through Employee Ownership
 1231 Fayer Avenue
 Summer, WA 98390
 WASHINGTON OREGON PORTLAND

PROJECT NAME: OLD HWY 99 AND BLACKBURN ROAD INTERSECTION IMPROVEMENTS

SHEET NO. G-03

Ø1	BLANK	Ø5	BLANK
Ø2	BLANK	Ø6	BLANK
Ø3	BLANK	Ø7	BLANK
Ø4	BLANK	Ø8	BLANK



VEHICLE PEDESTRIAN SIGNAL HEADS

21, 22, 23, 41, 42, 43, 61, 62, 63, 81, 82, 83, 28, 29, 48, 49, 88, 89

PHASE DIAGRAM EXCLUSIVE PEDESTRIAN PHASE

PRELIMINARY CONSTRUCTION NOTES:
 1. INSTALL CONTROLLER, CONTROLLER CABINET AND SERVICE CABINET ON CEMENT CONCRETE PAD AT BACK OF NEW SIDEWALK.

INSTALL CONDUIT AND 2C CABLE INTO EXISTING BNSF BUNGALOW FOR SIGNAL INTERCONNECT EXISTING BNSF BUNGALOW

NEW CURB AND SIDEWALK * PER INFORMATION FROM BNSF (ATTACHED)

EASEMENT TO CITY OF MOUNT VERNON

EASEMENT TO CITY OF MOUNT VERNON

EASEMENT TO CITY OF MOUNT VERNON

EASEMENT TO CITY OF MOUNT VERNON

EASEMENT TO CITY OF MOUNT VERNON

EASEMENT TO CITY OF MOUNT VERNON

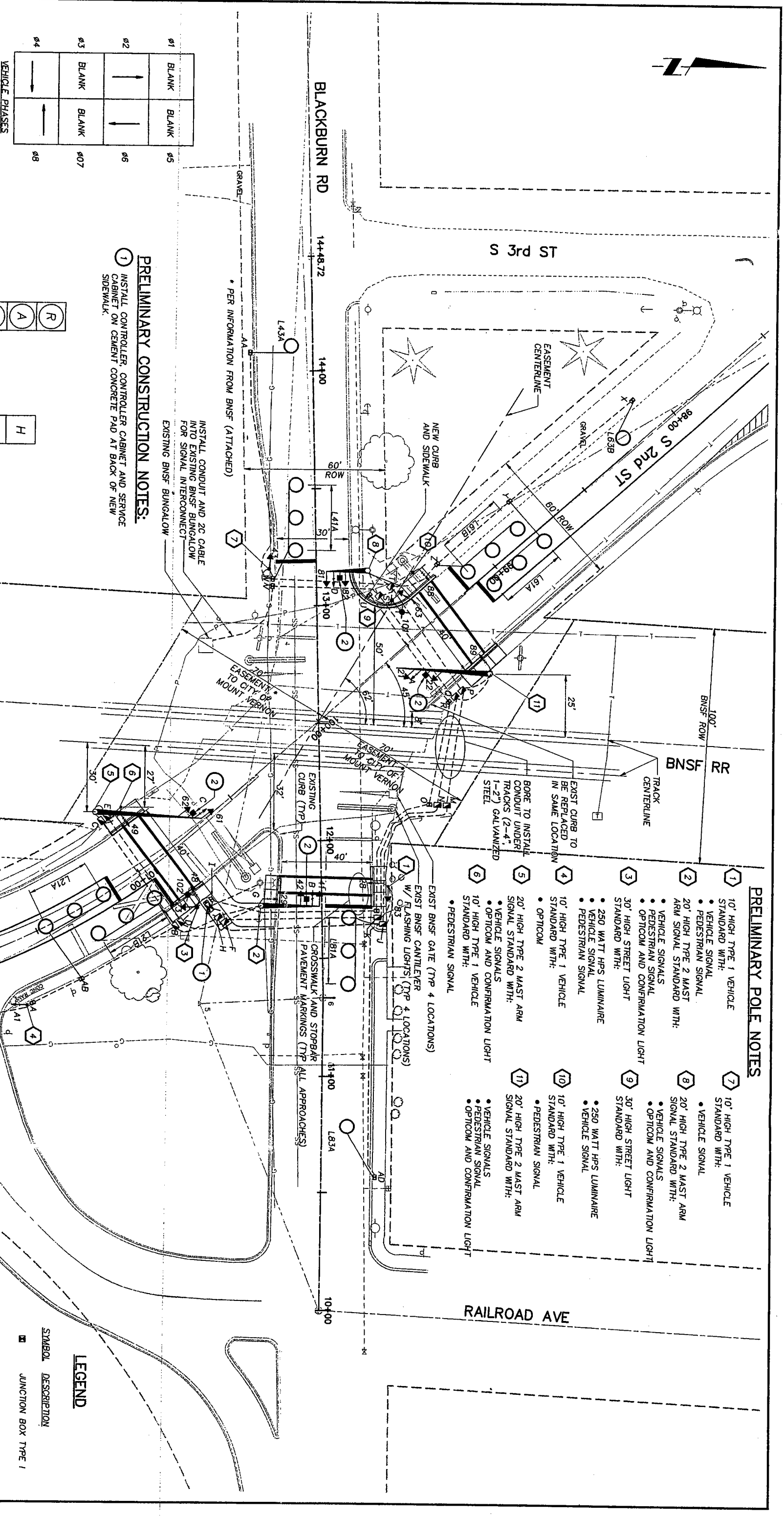
EASEMENT TO CITY OF MOUNT VERNON

EASEMENT TO CITY OF MOUNT VERNON

EASEMENT TO CITY OF MOUNT VERNON

EASEMENT TO CITY OF MOUNT VERNON

EASEMENT TO CITY OF MOUNT VERNON



- PRELIMINARY POLE NOTES**
- 1. 10' HIGH TYPE 1 VEHICLE STANDARD WITH:
 - VEHICLE SIGNAL
 - PEDESTRIAN SIGNAL
 - 2. 20' HIGH TYPE 2 MAST ARM SIGNAL STANDARD WITH:
 - VEHICLE SIGNALS
 - PEDESTRIAN SIGNAL
 - OPTICOM AND CONFIRMATION LIGHT
 - 3. 30' HIGH STREET LIGHT STANDARD WITH:
 - 250 WATT HPS LUMINAIRE
 - VEHICLE SIGNAL
 - PEDESTRIAN SIGNAL
 - 4. 10' HIGH TYPE 1 VEHICLE STANDARD WITH:
 - OPTICOM
 - 5. 20' HIGH TYPE 2 MAST ARM SIGNAL STANDARD WITH:
 - VEHICLE SIGNALS
 - OPTICOM AND CONFIRMATION LIGHT
 - PEDESTRIAN SIGNAL
 - 6. 10' HIGH TYPE 1 VEHICLE STANDARD WITH:
 - PEDESTRIAN SIGNAL
 - 7. 10' HIGH TYPE 1 VEHICLE STANDARD WITH:
 - VEHICLE SIGNAL
 - 8. 20' HIGH TYPE 2 MAST ARM SIGNAL STANDARD WITH:
 - VEHICLE SIGNALS
 - OPTICOM AND CONFIRMATION LIGHT
 - 9. 30' HIGH STREET LIGHT STANDARD WITH:
 - 250 WATT HPS LUMINAIRE
 - VEHICLE SIGNAL
 - PEDESTRIAN SIGNAL
 - 10. 10' HIGH TYPE 1 VEHICLE STANDARD WITH:
 - PEDESTRIAN SIGNAL
 - 11. 20' HIGH TYPE 2 MAST ARM SIGNAL STANDARD WITH:
 - VEHICLE SIGNALS
 - PEDESTRIAN SIGNAL
 - OPTICOM AND CONFIRMATION LIGHT

LEGEND

SYMBOL	DESCRIPTION
☒	JUNCTION BOX TYPE I
☑	JUNCTION BOX TYPE II
☐	CONTROLLER CABINET
○	INDUCTION LOOP
---	CONDUIT

EXHIBIT "A"

PEDESTRIAN SIGNALS		VEHICLE SIGNALS			HEAD NO.
88	89	21	22	23	2
P4	P2	41	42	43	4
DW	DW	61	62	63	6
DW	DW	81	82	83	8
DW	DW	28	29	29	
DW	DW	48	49	49	
DW	DW	68	69	69	
DW	DW	88	89	89	

PEDESTRIAN SIGNALS		VEHICLE SIGNALS			HEAD NO.
88	89	21	22	23	2
P4	P2	41	42	43	4
DW	DW	61	62	63	6
DW	DW	81	82	83	8
DW	DW	28	29	29	
DW	DW	48	49	49	
DW	DW	68	69	69	
DW	DW	88	89	89	

NORMAL OPERATION
*WHEN ACTIVATED

RAILROAD PRE-EMPTION OPERATION
*ALL RED CLEARANCE INTERVAL

PEDESTRIAN SIGNALS		VEHICLE SIGNALS			HEAD NO.
88	89	21	22	23	2
P4	P2	41	42	43	4
DW	DW	61	62	63	6
DW	DW	81	82	83	8
DW	DW	28	29	29	
DW	DW	48	49	49	
DW	DW	68	69	69	
DW	DW	88	89	89	

PEDESTRIAN SIGNALS		VEHICLE SIGNALS			HEAD NO.
88	89	21	22	23	2
P4	P2	41	42	43	4
DW	DW	61	62	63	6
DW	DW	81	82	83	8
DW	DW	28	29	29	
DW	DW	48	49	49	
DW	DW	68	69	69	
DW	DW	88	89	89	

- LEGEND**
1. VEHICLE SIGNALS
 R = RED BALL
 A = AMBER BALL
 G = GREEN BALL
2. PEDESTRIAN SIGNALS
 W = WALK (MAN SYMBOL)
 DW = DON'T WALK (HAND SYMBOL)
 FDW = FLASHING DON'T WALK (FLASHING HAND SYMBOL)

SIGNAL SEQUENCE CHART

EXHIBIT "A"