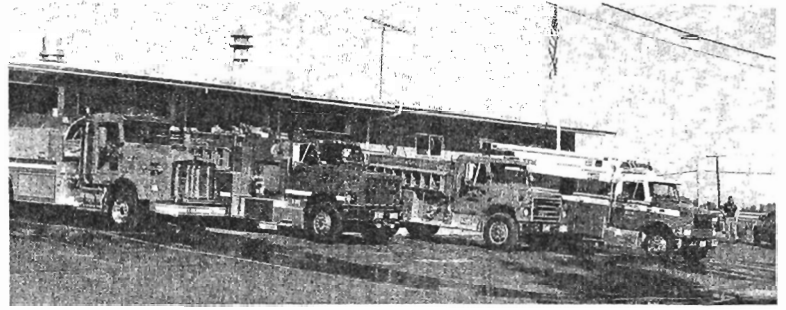




Station
1
Conway



Chief David Skrinde
Captain Jeff Hughes

Assistant Chief Scott Hanseth
Captain Nate Sheridan

Lieutenant Ryan Johnson

Lieutenant Harvey Moyer

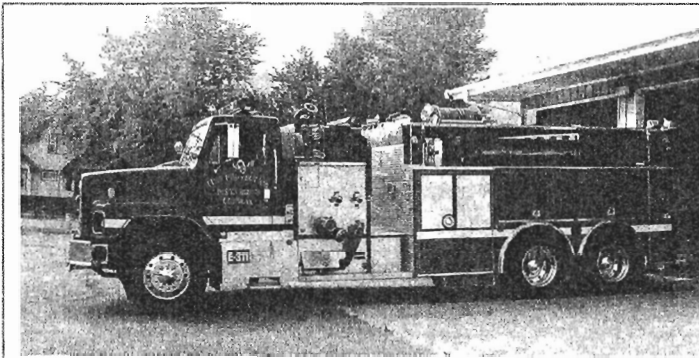
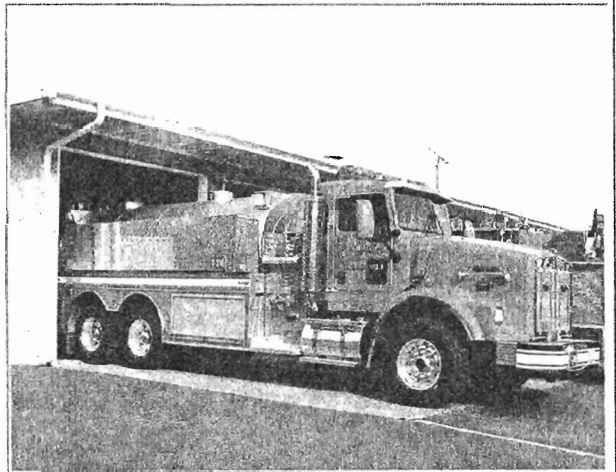
Lieutenant Scott Cleave

Lieutenant Jim Hutchens

Lieutenant Stan LaBore

Tender 316

This is our main portable water supply. It can carry 3500 gallons of water to a fire scene and dump it in a portable 3000 gallon pool for other engines to draw. It is also the newest piece of equipment in the department that entered in service in 2005. It is often called to assist other departments in rural fire scenes.

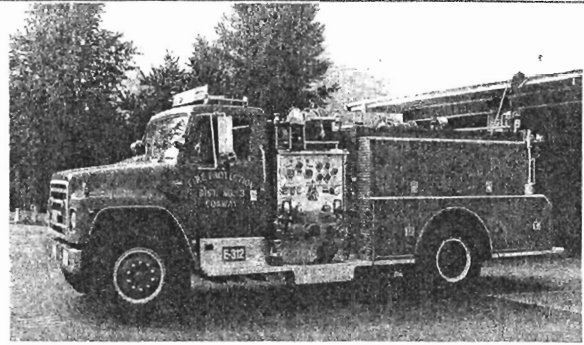


Engine 311

The main fire response comes from this workhorse of the department. It can carry 2500 gallons of water and deliver more than 500 gallons per minute to the fire scene. It began service in 1990 and can carry four firefighters and one officer.

Engine 312

This is the oldest truck in the station, and is used as back-up for large fire scenes. This little engine is especially useful for fighting brush fires and hard to reach areas. But it is a full fire rig with three ladders, some first aid supplies and a 750 gallon storage tank.



Rescue 317

This is the truck that responds to rescue scenes and traffic accidents. It is fully equipped for rescue with external scene lighting, hydraulic extraction equipment and EMT supplies. It entered service in 1999.



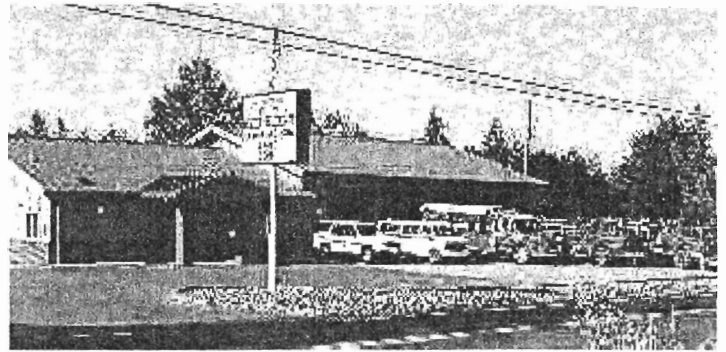
- [[Skagit Fire 3 Home](#)] [[Kid's Page](#)] [[Home Safety](#)] [[Fire Prevention for the Home](#)] [[Surviving a House Fire](#)]
[[Emergency Preparedness](#)] [[Business Preparation](#)] [[Flood Awareness](#)] [[Earthquake Preparation](#)]
[[Conway Station](#)] [[Cedardale Station](#)] [[Photo Gallery](#)] [[Commissioners Page](#)] [[Links](#)] [[Contact Us](#)]



Station
2
Cedardale

19746 East
Hickox Road

(360) 424-1661



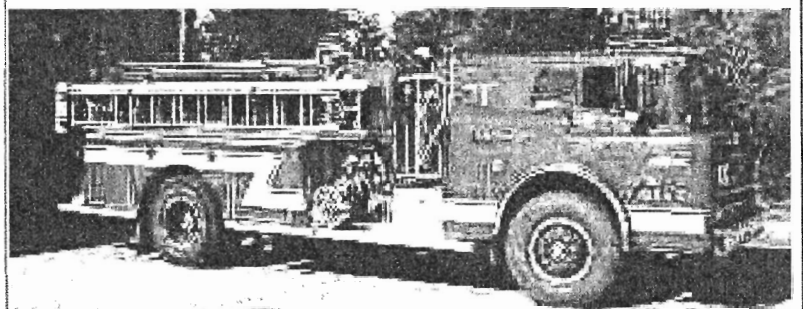
Glenn Harmon, Chief
Dave Walde, Captain

John VanPelt, Assistant Chief
Angela Pederson, Medical

Lieutenant Larry Alvord Lieutenant Kyle Frydenlund Lieutenant Darrin Morrison Lieutenant Jake Pederson

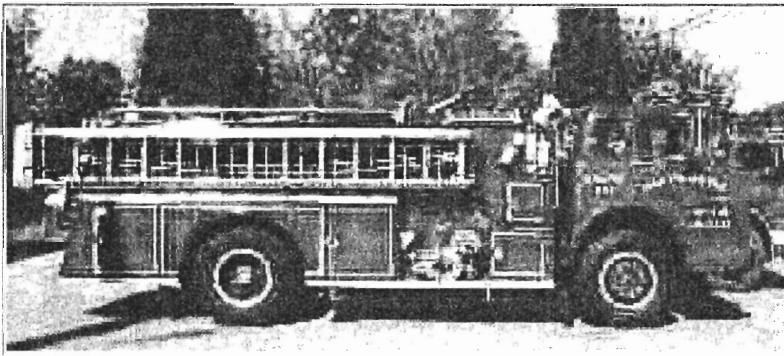
Engine 321

This is our first response truck for all fires. Commonly called a "pumper" it carries 4 firefighters and one officer. Besides four sizes of hose, it has an onboard water tank and carries three ladders, and is equipped for medical emergencies.



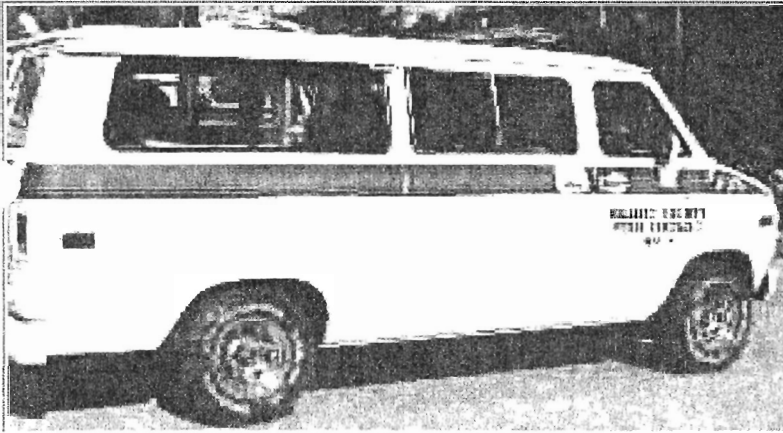
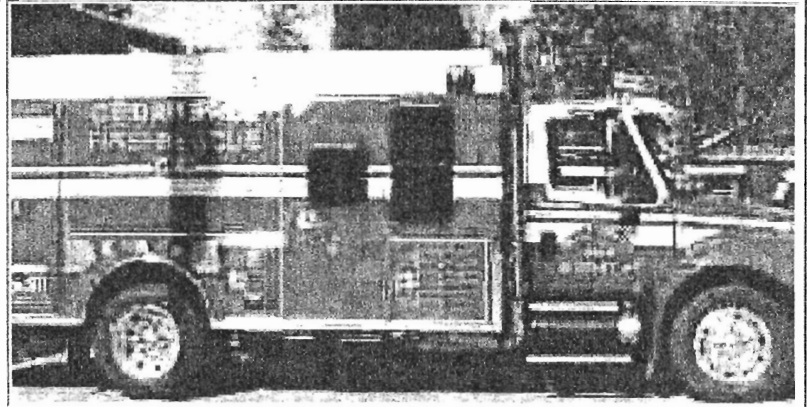
Engine 322

This is our oldest truck and does not have inside seating for extra firefighters, so is used as a back-up and responds second to fire scenes. It also carries water onboard along with a monitor nozzle, external pump for drafting and rescue equipment.



Rescue 327

This is our main rescue vehicle. It carries medical equipment and EMS supplies, emergency food supplies, major demolition tools, and exterior scene lighting. It is the newest of our trucks and gets the most use. We use it first on all rescue and medical aid calls.



Utility 328

This is an older van that carries extra people and supplies to a major incident. It also serves as back-up command vehicle so it has extra foam, flares, and road safety equipment.

Battalion 3

This is our new command vehicle. It is used by the Duty Chief to respond to all calls, anytime we are called. It is equipped with radios for Skagit and Snohomish responses. You can find it parked at the edge of the fire scene so that the incident commander can see the whole scene and not be in the way of fire and rescue operations.



- [[Skagit Fire 3 Home](#)] [[Kid's Page](#)] [[Home Safety](#)] [[Fire Prevention for the Home](#)]
- [[Surviving a House Fire](#)] [[Emergency Preparedness](#)] [[Business Preparation](#)] [[Flood Awareness](#)]
- [[Earthquake Preparation](#)] [[Conway Station](#)] [[Cedardale Station](#)] [[Photo Gallery](#)]
- [[Commissioners Page](#)] [[Links](#)] [[Contact Us](#)]

