

DATE PREPARED: November 4, 2022	WITNESS: N/A
DOCKET: TG-220243-220215	Responder: Packaging Corporation of America
REQUESTER: Basin Disposal, Inc.	

DATA REQUEST NO. 23:

Produce all budgets, cost estimates, internal analyses prepared by or for PCA relating to the disposal of its OCC Rejects prior to March 3, 2021.

RESPONSE:

Objection. Over broad, unduly burdensome in that the request asks for information irrelevant to this proceeding. PCA's project analysis and budgets would have considered options other than disposal for the OCC Rejects. Additionally, the question also asks for confidential business information. Subject to and without waiving the foregoing objections, PCA responds as follows:

For documents responsive to this Data Request, please see the PDF titled "PCA Responsive Documents to DR 23."

Shaded information is designated as CONFIDENTIAL per Protective Order in Dockets TG-220243 & TG-220215 as marked in documents produced in PCA's Response to BDI Data Request No. 023.

PCA reserves the right to amend or supplement this response.

From: Butkus, Paul [/O=PACKAGINGCORP/OU=EXCHANGE ADMINISTRATIVE GROUP (FYDIBOHF23SPDLT)/CN=RECIPIENTS/CN=34F438FF2FF749CB9657ED5BAEEF4BD1-BUTKUS, PA]
Sent: 3/19/2019 8:47:11 PM
To: Garber, Rich D [/o=PackagingCorp/ou=Exchange Administrative Group (FYDIBOHF23SPDLT)/cn=Recipients/cn=4717c44e7f7f49eeb003bb157214cadd-Garber, Ri]; Piotrowski, John [/o=PackagingCorp/ou=Exchange Administrative Group (FYDIBOHF23SPDLT)/cn=Recipients/cn=651fe92cc8194da69d98cde138e88943-JSP2968]
CC: Ramos, Charleston [/o=PackagingCorp/ou=Exchange Administrative Group (FYDIBOHF23SPDLT)/cn=Recipients/cn=c6036e8c448d446e8ade897c8fc77307-Ramos, Cha]
Subject: OCC Plant Info

FYI – Here is some additional info from Dave Tobin:

- Anticipate the CAR for the OCC Plant will not be submitted for another four months or so.
- Best guess would be construction in Q3/Q4 2020.
- Currently assuming 110 tpd of OCC rejects (a little bit more than the initial estimate). At current disposal rate of \$2.5M/tpd, that would be about \$2.75M/yr.

• Evaluating the impacts of the OCC Plant on the environment.

From: Tobin, David [/O=PACKAGINGCORP/OU=EXCHANGE ADMINISTRATIVE GROUP (FYDIBOHF23SPDLT)/CN=RECIPIENTS/CN=7B31B160DEE345568F3D794F235399AE-TOBIN, DAV]
Sent: 9/23/2019 5:04:55 PM
To: Davis, Nick [/o=PackagingCorp/ou=Exchange Administrative Group (FYDIBOHF23SPDLT)/cn=Recipients/cn=59548d657bce4e2c93fafc583ac2f53a-Davis, Nic]; Thomas, Rodney [/o=PackagingCorp/ou=Exchange Administrative Group (FYDIBOHF23SPDLT)/cn=Recipients/cn=4e902572df2b4feb8263a069682bf835-RKT3587]; Treadwell, Curt [/o=PackagingCorp/ou=Exchange Administrative Group (FYDIBOHF23SPDLT)/cn=Recipients/cn=1c6beb2855f24f3fb8ba2b40ba06ae89-Treadwell,]
CC: Butkus, Paul [/o=PackagingCorp/ou=Exchange Administrative Group (FYDIBOHF23SPDLT)/cn=Recipients/cn=34f438ff2ff749cb9657ed5baeef4bd1-Butkus, Pa]
Subject: FW: DeRidder OCC Rejects Burning.xlsx
Attachments: P29532 PCA Wallula OCC Reject System Budget.pdf; Visio-P29532 V.1.pdf; RE: DeRidder OCC Rejects Burning.xlsx; 190923 P29532 PCA Wallula OCC Rejects Burning Project.pptx

Here is a proposal from Western Pneumatics and other related information to blow OCC rejects from the Ponderosa site to the hog boiler. Several questions and additional tasks exist for this approach:

- Costs and benefits must be compared to the truck / hopper transport option
- Rail road permission must be secured for blowing rejects in a pipe over the tracks on a new pipe rack bridge. An underground pipe for conveyance will not be considered.
- Other tasks for the OCC plant project have higher priority like issuing Voith a PO for major equipment, completing engineering of long lead item equipment such as large pumps, valves, motors etc.
- Securing other independent installation quotes
- Estimating costs to purchase and install a magnet and transfer conveyor to the proposed Western Pneumatic air density separator

Will have Scott continue to work with the boiler group on developing options to consider for transporting OCC rejects to the hog boiler for incineration and keep this group informed of progress.

From: Schlieff, Scott <ScottSchlieff@packagingcorp.com>
Sent: Monday, September 23, 2019 8:53 AM
To: Tobin, David <DavidTobin@packagingcorp.com>
Subject: FW: DeRidder OCC Rejects Burning.xlsx

FYI- does not include engineering, civil, structural, or electrical. Note that there is a bag house type separator for the Hog Fuel Boiler which would sit on the roof.

From: Jason Damon <jasond@westernp.com>
Sent: Friday, September 20, 2019 2:01 PM
To: Hiner, Larry <LarryHiner@packagingcorp.com>
Cc: Schlieff, Scott <ScottSchlieff@packagingcorp.com>
Subject: [EXTERNAL] RE: DeRidder OCC Rejects Burning.xlsx

Gentlemen,
Your budget quote is attached. I feel it would be safe to use Wallula's budget for DeRidder as for the hp system length is close to the same.

Thank you for the opportunity and if I can answer any questions please let me know.

Best regards,

Jason Damon

Pneumatic consulting, sales and service

WPI

jasond@westernp.com

westernpneumatics.com

Bus. 541-461-2600

Cell 541-914-3194

Post Office Box 21340

Eugene, Oregon USA 97402

From: Hiner, Larry <LarryHiner@packagingcorp.com>

Sent: Thursday, September 19, 2019 8:31 AM

To: Jason Damon <jasond@westernp.com>

Subject: RE: DeRidder OCC Rejects Burning.xlsx

Jason,

The alternate route shown on the picture I sent previous is about 260' west and 340 " south (approximately 600') of horizontal travel. I would expect 100' of vertical from grade to line exit . Estimating 6 elbows to make the path for the alternate.

Larry

From: Hiner, Larry

Sent: Thursday, September 19, 2019 10:57 AM

To: 'Jason Damon' <jasond@westernp.com>

Subject: RE: DeRidder OCC Rejects Burning.xlsx

Tons per hour. Thanks for asking. We have about 50 TPD at DeRidder of rejects to transfer.

From: Jason Damon <jasond@westernp.com>

Sent: Thursday, September 19, 2019 10:33 AM

To: Hiner, Larry <LarryHiner@packagingcorp.com>

Subject: [EXTERNAL] RE: DeRidder OCC Rejects Burning.xlsx

Hi Larry,

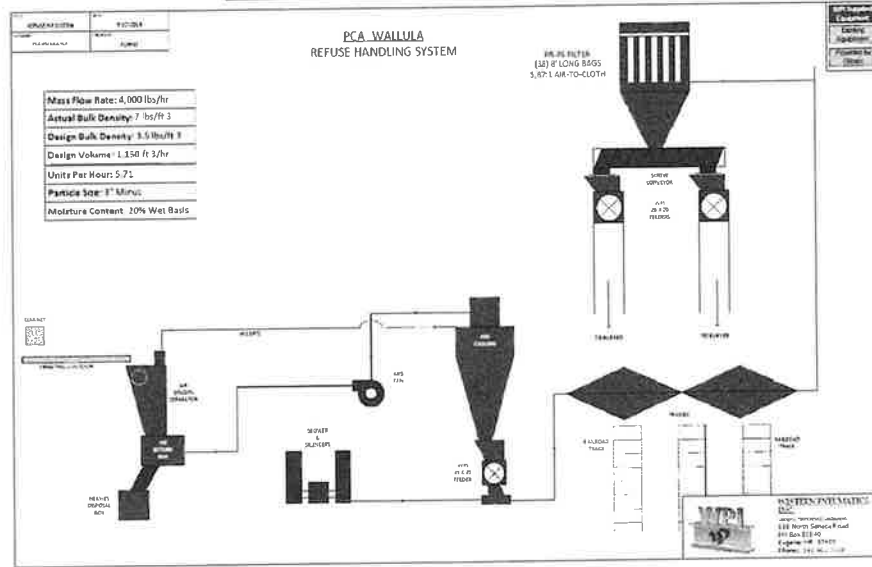
Is the mass flow of material 2-3 tons per day or hour? The pipe length and routing are somewhat similar as Wallula's. I can provide you their budget pricing and if we want to confirm pipe routing and any obstacles I would be happy to get one of our guys to come down and look at it.

Jason Damon

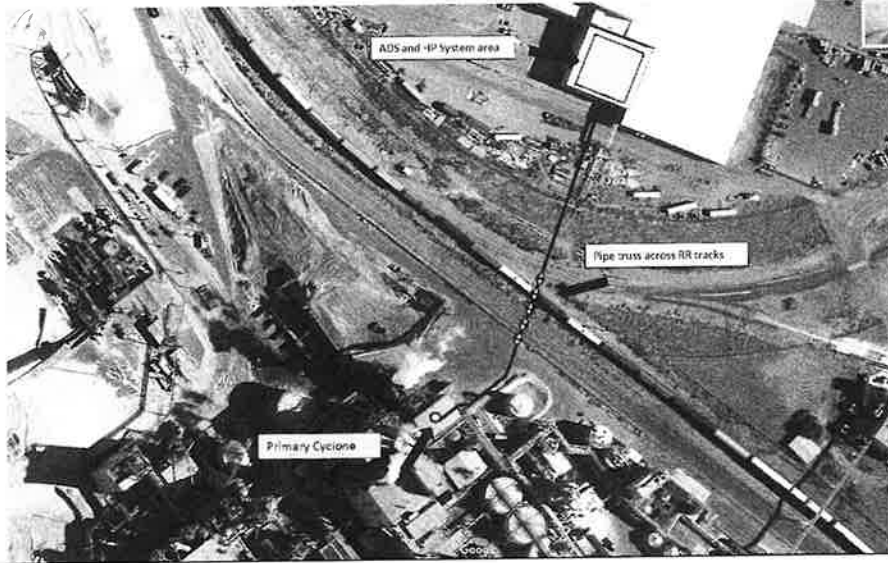
PCA Wallula OCC Rejects Burning Project

P29532

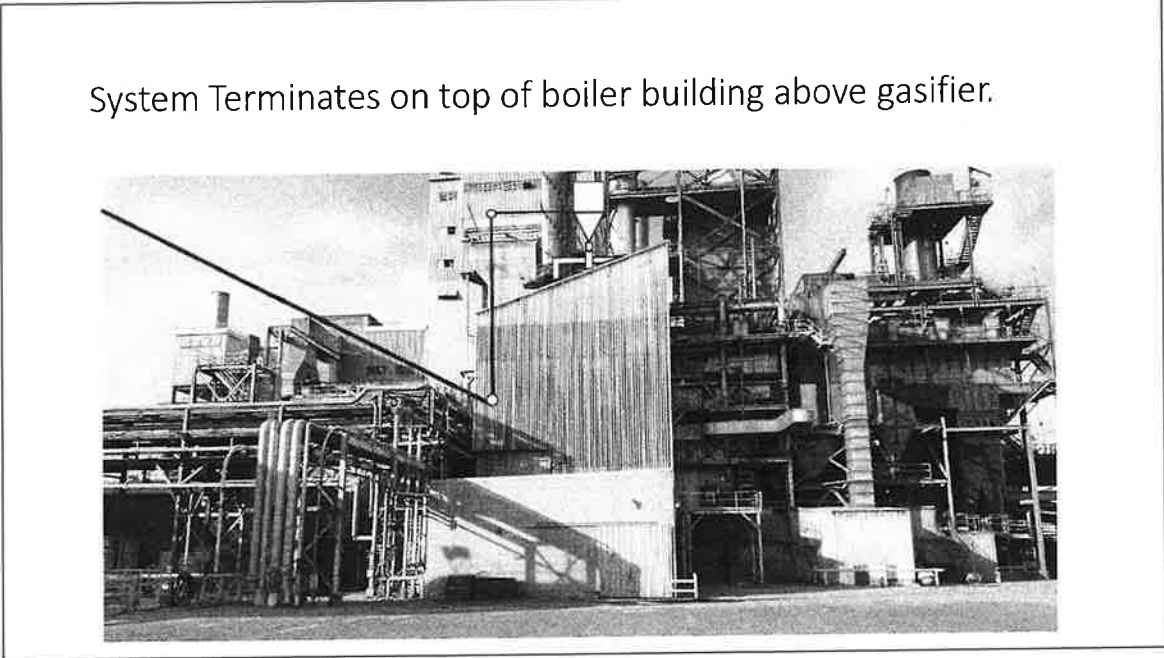
System Schematic



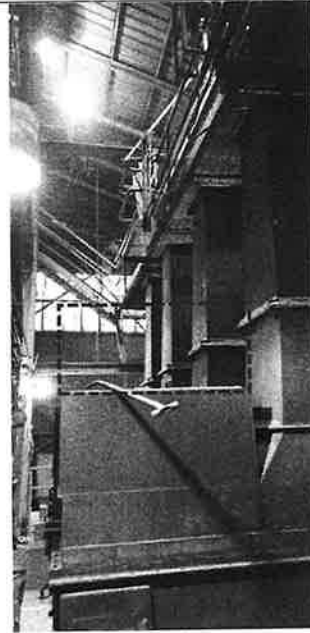
Equipment Layout and Pipe Routing



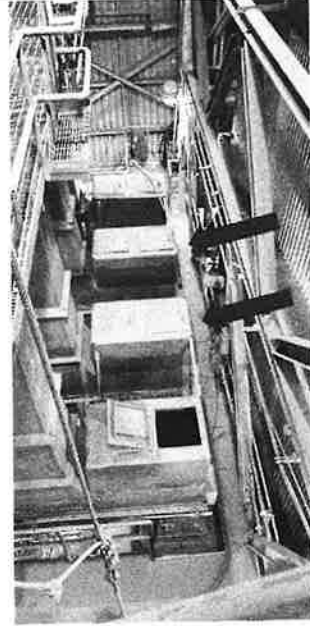
System Terminates on top of boiler building above gasifier.



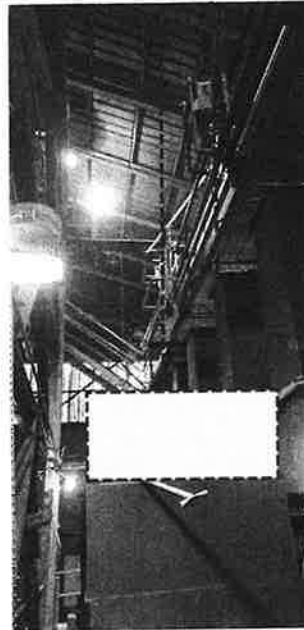
#2 and #3 fuel screw infeed boxes will be modified to allow for a small amount of material storage above the gasifier infeed screw.



Material will enter #2 and #3
fuel infeed screws only.



Chuting will come through the roof from the bottom of the primary cyclone and drop material into #2 and #3 fuel screw infeed.





Western Pneumatics, Inc.

220243 and 220215 Exh. SR ___ RX
220243 and 220215 Exh. BW ___ RX
220243 and 220215 Exh. KT ___ RX
Page 12 of 54

Pneumatic Conveying & Material Handling
Machinery Group & Finger Jointing
Industrial Installation

Custom Fabrication
Dampers
Agricultural Products

Tanks & Pressure Vessels
Biomass
Parts & Service

****PLEASE NOTE: DUE TO THE VOLATILITY OF STEEL AND ALUMINUM PRICING, ALL ORDERS ARE SUBJECT TO PRICE AND DELIVERY REVIEW PRIOR TO ACCEPTANCE****

See Terms and Conditions for additional Information

9/20/2019

Quotation # P29532

PCA
P O Box 500
Wallula, WA 99363-0500
Tel: 208-384-6161
Fax: 208-331-5745

Attention: Larry Hiner

Subject: High Pressure System For OCC Rejects System to Boiler

Gentlemen:

Thank you for the opportunity to offer our proposal for your consideration. The following is a list of the equipment, materials and a scope of work to be provided.

Scope: Provide budget pricing for below systems

Provide equipment to blow 2 tons per hour of wood and plastic from ADS system located at the old Ponderosa Building to the #2 and #3 fuel feed screw bins located at the Boiler Building.

We propose an air density separator and magnet (magnet by others) be installed prior to the infeed of the feeder to assure proper operation of the high-pressure system. Due to the light nature of some of the material we recommend the termination point of the high-pressure system be a primary dust collector. This will remove any of the light carry over material leaving from the exhaust of the cyclone.

This system also has been designed with a screw conveyer under the primary dust collector. This will split the material flow and also allow infeed of material to be stopped if there is an upset condition in the gasifier. The infeed chutes at the feeders will have access doors to clear the material away from the feeder if this happens prior to starting back up.

The existing tops of the fuel screws will be modified to allow extra room for the material to drop out into the discharge of the fuel screw. This will also allow room for surges of material and prevent the feeder discharge chutes from plugging.

PO Box 21340
110 N Seneca Rd.
Eugene, Oregon 97402

Design – Fabrication – Installation

www.westernp.com

Tel: 541-461-2600
Fax: 541-461-2606

This system was designed using the below specs:

- Material-** 2 tons per hour of wood and plastic 3" minus with a bulk density of 7 lbs/ ft3
- System elevation-** 360' above sea level
- Horizontal run length-** 700'
- Vertical rise length-** 100'
- Degrees of elbow-** approximately 600 degrees
- Termination point-** Filtered primary cyclone

System to include the following equipment:

- Acrowood Air Density Separator which includes ADS assembly, piping and elbow to cyclone, cyclone, piping from cyclone to centrifugal fan, centrifugal fan, and piping back to ADS.
- High pressure blower package which includes Sutorbilt 1024-5000 blower, 75 hp motor, blower base assembly, inlet silencer, discharge silencer and all air piping to feeder.
- Blower pressure control panel
- WPI 25x25 feeder package which includes feeder, drive, t-injector and table
- 700' of 8.625" .250 wall painted pipe and flanges
- Flatback elbows
- Support structure and pole supports for piping.
- Pipe truss to span pipe 110' across railroad tracks
- PR-76 Pulse Air Round Primary Baghouse complete with structure
- Screw conveyer to split material stream and convey material to gasifier chutes
- Qty. 2- 20x20 feeder assembly's with drives
- Qty. 2- mild steel chutes to #2 and #3 gasifiers
- Qty. 2- tri-braze boxes to modify existing fuel feed screw

Installation of equipment includes mobilization to plant site, subsistence, labor, toilets, cranes, manlifts and forklift. Please allow 6 weeks to install.

Total estimated budget amount for above equipment f.o.b. plant site is for.....\$637,000.00

Total estimated budget amount to install the above equipment is for\$288,000.00

STEEL AND ALUMINUM PRICING VOLATILITY AND THE IMPACT ON WESTERN PNEUMATICS TO SERVICE ITS CUSTOMERS:

The Western Pneumatics Team is doing its best to secure the best pricing and delivery for its customers. However, our suppliers are unable to secure pricing and firm delivery dates until an order is placed.

For this reason, until the market stabilizes, *ALL ORDERS ARE SUBJECT TO PRICE AND DELIVERY REVIEW PRIOR TO ACCEPTANCE. NO ORDERS WILL BE ACCEPTED WITHOUT AN OFFICER SIGNATURE.*

As you would expect this is going to add additional time and review of every order. As always, your patience and understanding, as we work to get you the best available pricing and delivery, is greatly appreciated.

Please note: any reference to price, delivery or contradiction to the above statements noted below in our standard terms and conditions is subject to review and/or change prior to acceptance of an order.

DELIVERY:

Estimated time of completion is twenty-four (24) to twenty-eight (28) weeks from receipt of down payment and all information necessary to complete fabrication of the described equipment. Freight and installation time frames are added to our equipment completion schedule (if applicable.)

PAYMENT TERMS:

SUPPLY & FABRICATION

1. Invoice 30% of contract value at the time the order is placed.
2. Billings totaling up to 70% of the contract value for labor, materials, equipment and subcontracts will be made on 30-day intervals following the initial invoice date.
3. All payments are net 30 days.
4. Freight will be billed separately when actual freight amount is established.
5. Parts sales will be invoiced at time of shipment and will include freight charges.
6. Interest will be charged on past due balances at the end of the month at 18% per annum.

MECHANICAL INSTALLATION

1. Mobilization: Invoice 15% of contract value at the time the order is placed, or 60 days prior to mobilization to site.
2. Billings totaling up to 80% of the contract value for labor, materials, equipment and subcontracts will be made on 30-day intervals following the initial mobilization date.
3. Approved Change Orders: Invoiced weekly, summary statement provided to customer for review and approval.
4. Final payment: Invoice 5% of contract value after mechanical installation is complete and substantial billing and final billing forms signed off by customer.
5. All Payments are net 30 days.
6. Interest will be charged on past due balances at the end of the month at 18% per annum.

Please Note: Western Pneumatics, Inc. *REQUIRES* a copy of customer's purchase order for all services greater than \$10,000 and customer approval signature on substantial completion forms at each milestone and final billing.

PAINT SPECIFICATIONS:

Surface preparation for most all pieces involves SSPC-S.P.-6 commercial blast cleaning to remove all oil, grease, dirt, rust scale and foreign matter by abrasive blasting. The first coat consists of an iron oxide primer. The top finish coat is alkyd enamel with one of our standard 17 colors. Chain guards and other safety enclosures are orange or yellow. If one of our standard paint colors is not acceptable, we can offer pricing for a custom paint system.

WPI paint specification does not include the top coating of pre-painted buy-out items such as fans, blowers, actuators, reducers, motors, controls, etc. These items are supplied as received from the original manufacturer.

ENGINEERING SERVICES:

WPI design and engineering services includes in-house documentation for all equipment provided in our proposal. WPI standard engineering services **do not** include Professional Engineer stamped and sealed drawings. This service can be offered as an option if required by the customer.

EXCLUSIONS:

1. All state and local taxes, permits, licenses, brokerage fees, and duties that may apply.
2. All costs for additional insurance associated with specific project requirements.
3. Overtime labor: Additional overtime required if requested different than proposed schedule.
4. Fire security watch, including water supply unless otherwise noted in the proposal.
5. Confined space attendants for vessel entry, gas monitors and required permits unless otherwise noted in the proposal.
6. All concrete, concrete embeds, concrete engineering, excavation, electrical, plumbing and carpentry work.
7. Supply and installation of grout other than what is specifically described in each proposal.
8. Installation of any equipment not listed above.
9. Equipment lubrication and first fills.
10. Western Pneumatics reserves the right to charge \$250 for power cleaning of used equipment tainted with wood waste, oils, or the like (if applicable.)
11. Roof penetrations and rework of roof system around penetrations.

LIMITED WARRANTY: DISCLAIMER; LIMITATION OF REMEDY.

WPI warrants to buyer that the equipment manufactured by WPI shall be free from defects in material and workmanship for a period of one (1) year. Warranty period begins from the date of shipment or commissioning date if equipment installed by WPI during normal use and with proper maintenance. Any modification of equipment without WPI's written consent voids WPI's warranty. WPI's obligation for any defect in the equipment shall be limited to replacement or repair, at WPI's option, at a site selected by WPI, of any parts which WPI's inspection shows to have been defective. All other warranties whether express, implied, statutory or otherwise, including warranties as to merchantability and as to fitness for a particular purpose are hereby expressly excluded. In no event shall WPI be liable under any legal theory for buyers down time, loss of profits or other economic loss, indirect, special consequential, punitive or other similar damages.

All components of the equipment sold under this agreement which are not manufactured by WPI are not warranted by WPI. Buyer understands and acknowledges that if such a component fails, buyer's remedy is limited to the warranty, if any, made by the manufacturer of such component. WPI hereby assigns such warranty rights, if any, to buyer to the extent such rights are assignable.

Please Note

The prices as quoted in the above Proposal are subject to change after thirty (30) days and specialty material prices are subject to revision based upon material prices on the day the accepted proposal is accepted by a WPI officer or Sales Manager.

If you have any questions regarding the above information, please let us know. We look forward to working with you soon.

Sincerely,



Jason Damon
Sales and Service



Excellence Since 1982
Design – Fabrication – Installation
Western Pneumatics, Inc.

Enclosure

Terms of Sale
Contractor's License #486100
OEM Warranty

Proposals exceeding \$200,000 in value require a 2nd binding signature by a WPI Officer or Sales Manager.

Title: Officer / Sales Manager

Date:

Customer hereby accepts the foregoing proposal of WPI and acknowledges receipt of, and agreement to Western Pneumatics enclosed terms of sale (2 pages) including, but not limited to, Western Pneumatics' limited warranty, disclaimer, and limitation of remedy. Customer understands that this Proposal is not binding upon the parties until signed below by WPI officer or Sales Manager.

Customer Acceptance:

Approval of Customer Acceptance by WPI:

By:

Title: WPI Officer / Sales Manager

Title:

Date:

Date:

PO#:

WESTERN PNEUMATICS TERMS OF SALE

1. **Terms Exclusive.**
Unless other terms are expressly accepted by Western Pneumatics, Inc. (hereafter, "**WPI**") by means of a written amendment to these terms of sale signed by an officer of **WPI** and referring specifically to the terms to be amended, the contract shall be on the terms set out below (hereafter "the Contract") to the exclusion of any other terms.
2. **LIMITED WARRANTY; DISCLAIMER; LIMITATION OF REMEDY.**
WPI WARRANTS TO BUYER THAT THE EQUIPMENT MANUFACTURED BY WPI SHALL BE FREE FROM DEFECTS IN MATERIAL AND WORKMANSHIP FOR A PERIOD OF ONE (1) YEAR FROM THE DATE OF SHIPMENT DURING NORMAL USE AND WITH PROPER MAINTENANCE. ANY MODIFICATION OF EQUIPMENT WITHOUT WPI'S WRITTEN CONSENT VOIDS WPI'S WARRANTY. WPI'S OBLIGATION FOR ANY DEFECT IN THE EQUIPMENT, SHALL BE LIMITED TO REPLACEMENT OR REPAIR, AT WPI'S OPTION, AT A SITE SELECTED BY WPI, OF ANY PARTS WHICH WPI'S INSPECTION SHOWS TO HAVE BEEN DEFECTIVE. ALL OTHER WARRANTIES WHETHER EXPRESS, IMPLIED, STATUTORY OR OTHERWISE, INCLUDING WARRANTIES AS TO MERCHANTABILITY AND AS TO FITNESS FOR A PARTICULAR PURPOSE ARE HEREBY EXPRESSLY EXCLUDED. IN NO EVENT SHALL WPI BE LIABLE UNDER ANY LEGAL THEORY FOR BUYER'S DOWN TIME, LOSS OF PROFITS OR OTHER ECONOMIC LOSS, INDIRECT, SPECIAL CONSEQUENTIAL, PUNITIVE OR OTHER SIMILAR DAMAGES.

ALL COMPONENTS OF THE EQUIPMENT SOLD UNDER THIS AGREEMENT WHICH ARE NOT MANUFACTURED BY WPI ARE NOT WARRANTED BY WPI. BUYER UNDERSTANDS AND ACKNOWLEDGES THAT IF SUCH A COMPONENT FAILS, BUYER'S REMEDY IS LIMITED TO THE WARRANTY, IF ANY, MADE BY THE MANUFACTURER OF SUCH COMPONENT. WPI HEREBY ASSIGNS SUCH WARRANTY RIGHTS, IF ANY, TO BUYER TO THE EXTENT SUCH RIGHTS ARE ASSIGNABLE.
3. **Shipment and Delivery.**
Method and route of shipment are at **WPI's** discretion unless Buyer supplies express written instructions. All shipments are insured at Buyer's expense and made at Buyer's risk. Title to any goods covered by this Contract shall pass to the Buyer when they are delivered to the common carrier or otherwise shipped by **WPI**.
4. Deliveries are subject to, and contingent upon, strikes, labor difficulties, riot, war, fire, acts of God, delay or default of common carriers, governmental actions or any other delays beyond **WPI's** reasonable control, and **WPI** shall not be liable for any damage or loss arising therefrom. If, due to the foregoing, **WPI's** performance of this Contract becomes impossible or substantially hindered or made more difficult, **WPI** shall have the option of either canceling this Contract or any part thereof without any resulting liability or performing within a reasonable time after the reasons for nonperformance have terminated.
5. **NO CLAIM FOR DAMAGES OR SHORTAGES WILL BE CONSIDERED UNLESS WPI AND THE CARRIER ARE NOTIFIED IN WRITING WITHIN THREE (3) DAYS OF DELIVERY, AND NO CLAIM FOR NONDELIVERY WILL BE CONSIDERED UNLESS WPI IS NOTIFIED IN WRITING WITHIN TEN (10) DAYS OF REASONABLE DELIVERY TIME.**
6. **Return of Goods.**
In no case may goods be returned without first obtaining the permission of **WPI**.
7. **No License.**
No right or license is granted by the terms of this Contract to Buyer under any patent, copyright, registered design or other industrial property right except the right to use or resell the goods sold under this Contract.
8. **Assignment and Subcontract.**
WPI shall be entitled to assign, subcontract, or sublet this Contract or any portion thereof.
9. **No Waiver.**
Failure by **WPI** to enforce any of the Contract terms shall not constitute a waiver of any of **WPI's** rights.
10. **Payment.**
All invoices are due upon receipt unless they expressly provide otherwise. Buyer agrees to pay a service charge at a rate of one and one-half percent (1½%) per month, or the maximum legal rate, whichever is lesser, on all sums past due.
11. **Default.**
In event of Buyer's default, **WPI** may, at its option: (a) suspend **WPI's** manufacture of the Equipment indefinitely until Buyer's default is remedied; or (b) terminate **WPI's** manufacture of the equipment and receive from Buyer an amount equal to the gross profit to have been earned under this Agreement plus all costs and expenses accrued or incurred by **WPI** to the date of termination. The remedies provided for in this Agreement shall not be deemed exclusive and **WPI** shall have in addition thereto all other remedies available at law and in equity.

12. **Collection Costs.**
Buyer agrees to pay **WPI**'s expenses incurred in collection of any monies due from Buyer, including **WPI**'s reasonable attorney fees incurred at trial and on appeal, to be set by the court.
13. **Indemnification.**
If goods are manufactured to the design specification of Buyer, Buyer agrees to indemnify and hold harmless **WPI** against all losses, costs, charges, expenses and damages which **WPI** might suffer as a result of any claim that: (a) the goods infringe on the intellectual property rights of any other person; or (b) the goods do not comply with any statute, rule or regulation.
14. **Governing Law.**
This Contract shall be governed by the laws of the state of Oregon. The parties agree that all disputes relating to this Agreement shall be tried before the courts of Oregon to the exclusion of all other courts which might have jurisdiction apart from this provision. Venue in any litigation arising hereunder shall be in the Circuit Court of the State of Oregon for Lane County, or in United States District Court for the District of Oregon, Eugene Division.
15. **Taxes.**
All quoted or contract prices shall be subject to an additional charge to cover any existing or future manufacturing, sales, use or similar tax which may be applicable. Buyer shall be solely responsible for all such taxes and securing any permits.
16. **Security Interest.**
WPI shall retain a security interest in all of the goods sold to Buyer until the purchase price is fully paid. In the event that any such payment is not made promptly when due, **WPI** shall have all the rights and remedies of a secured creditor under the Uniform Commercial Code with respect to the goods delivered to Buyer, in addition to any other rights and remedies available under applicable law. Buyer shall execute, at **WPI**'s request, any appropriate documents to perfect **WPI**'s security interest granted under this paragraph.
17. **No Waiver of Subrogation.**
No waiver of subrogation by **WPI** shall be effective unless signed by the CEO or president of **WPI**.

From: Tobin, David [/O=PACKAGINGCORP/OU=EXCHANGE ADMINISTRATIVE GROUP (FYDIBOHF23SPDLT)/CN=RECIPIENTS/CN=7B31B160DEE345568F3D794F235399AE-TOBIN, DAV]
Sent: 2/4/2020 2:09:31 AM
To: Cook, Dana [/o=PackagingCorp/ou=Exchange Administrative Group (FYDIBOHF23SPDLT)/cn=Recipients/cn=205bdee60bdd4669bb8cbc9a48536ca5-DCC060114]; Thomas, Rodney [/o=PackagingCorp/ou=Exchange Administrative Group (FYDIBOHF23SPDLT)/cn=Recipients/cn=4e902572df2b4feb8263a069682bf835-RKT3587]
CC: Thorne, Kurt [/o=PackagingCorp/ou=Exchange Administrative Group (FYDIBOHF23SPDLT)/cn=Recipients/cn=63a0fe866d634b9eb2c1c186aab09c38-Thorne, Ku]; Wilhelm, Brian [/o=PackagingCorp/ou=Exchange Administrative Group (FYDIBOHF23SPDLT)/cn=Recipients/cn=a4026b7f7c424e80a477fe21a993aa85-Wilhelm, B]
Subject: Wallula OCC re-estimate
Attachments: 200203 190808 OCC Project Est.r10.xlsx NDavis.xlsx

Right now the new estimate consumes all the contingency but could stay out of supplemental.

- OCC rejects will have > 50 % DLK so consider just dumping on the hog pile and mix in with pusher, savings potential \$ 1.9 MM

Will update estimate Wed / Thurs as soon as the electrical info arrives.

David
C: (509) 430-1998

From: Rachford, Skyler [/O=PACKAGINGCORP/OU=EXCHANGE ADMINISTRATIVE GROUP (FYDIBOHF23SPDLT)/CN=RECIPIENTS/CN=6784500E517C498EB9DB9CEE3FB99590-RACHFORD,]
Sent: 12/17/2020 8:08:06 PM
To: Holm, Sam [/o=PackagingCorp/ou=Exchange Administrative Group (FYDIBOHF23SPDLT)/cn=Recipients/cn=e53d662511a94bd591eea1f8d5de3110-Holm, Sam]
CC: Markland, Kasey [/o=BoisePaper/ou=Exchange Administrative Group (FYDIBOHF23SPDLT)/cn=Recipients/cn=b5ff64f5af9147e8b020614da2bdcee3-Markland, Kas]; Thorne, Heather [/o=PackagingCorp/ou=Exchange Administrative Group (FYDIBOHF23SPDLT)/cn=Recipients/cn=127a9885a7b446e48b39bbaf6e0f6170-Thorne, He]
Subject: RE: BDI contact
Attachments: OCC Rejects Dumpsters.xlsx

Sam,

Model looks good to me! The negotiation seems very reasonable.

Looking at the numbers again it looks like we will need 17, 20 yd BDI dumpsters for start up on 450 tpd. The calculations are on my spreadsheet attached.

Thanks,

Skyler Rachford

Assistant Supt. – OCC & Recycled Fiber

Office: Ext. 3327

Cell: (509) 316-1354

SkylerRachford@packagingcorp.com



Wallula, WA

From: Holm, Sam
Sent: Thursday, December 17, 2020 10:07 AM
To: Rachford, Skyler <SkylerRachford@packagingcorp.com>
Subject: RE: BDI contact

Skyler

Please take a look at my model. NOT looking at Seabright at all, only BDI.

I captured the mileage from BDI transfer to the mill total of 27 miles round trip less the 5 miles they don't charge for.

My baseline total per haul calculates out to \$704.54 based BDI's numbers and using 9 tons / dumpster.



Samuel Holm
C# 509-627-9155

From: Rachford, Skyler <SkylerRachford@packagingcorp.com>
Sent: Thursday, December 17, 2020 7:56 AM
To: Holm, Sam <SamHolm@packagingcorp.com>
Subject: RE: BDI contact

Sam,

Here you go! The calculations below are for if we are using the Seabright dumpsters that weigh close to 6 tons. The standard BDI dumpsters weigh about 1 ton so we can put 9 tons of waste in those as opposed to 4. If you add up the delivery fee, the haul fee, and the mileage it is basically about \$211 per raw haul. Then we have the weight charge on top of that per ton of waste.

Let me know if you need anything else.

Skyler

Kurt,

Here is the write up I sent to Phil yesterday.

Here are some additional numbers that will be useful in determining a path forward:

- An empty Seabright Dumpster weighs 5.625 tons
- I do not believe this includes the weight of the undercarriage that is added by the hauler.
- Rejects exiting Seabright are estimated to be about 60% solids
- You will typically see solids content anywhere between 50 and 80%. This largely depends on maintenance of the unit and how much fiber is in the rejects stream.
- Density of the Rejects exiting the Seabright is estimated to be 750 lbs/yd³

Skyler Rachford
Assistant Supt. – OCC & Recycled Fiber
Office: Ext. 3327
Cell: (509) 316-1354
SkylerRachford@packagingcorp.com



Wallula, WA

450 TPD Production Rate					
OCC Dumpsters	ODTPD Waste Generated	Estimated % Solids	Actual TPD Waste Generated	Dumpsters Used Per Day	Number of Dumpsters to Store On-Site
Seabright	35	60%	58.3	6.5	13.0
Effluent	2	30%	6.7	0.7	1.5
Ragger	3	95%	3.2	0.4	0.7
Junk Tower	1	20%	5.0	0.6	1.1
Sediminator	1	80%	1.3	0.1	0.3
				Total to Store On-Site:	17
650 TPD Production Rate					
OCC Dumpsters	ODTPD Waste Generated	Estimated % Solids	Actual TPD Waste Generated	Dumpsters Used Per Day	Number of Dumpsters to Store On-Site
Seabright	48	60%	80.0	8.9	17.8
Effluent	3	30%	10.0	1.1	2.2
Ragger	4	95%	4.2	0.5	0.9
Junk Tower	2	20%	10.0	1.1	2.2
Sediminator	2	80%	2.5	0.3	0.6
				Total to Store On-Site:	24
800 TPD Production Rate					
OCC Dumpsters	ODTPD Waste Generated	Estimated % Solids	Actual TPD Waste Generated	Dumpsters Used Per Day	Number of Dumpsters to Store On-Site
Seabright	58	60%	96.7	10.7	21.5
Effluent	4	30%	13.3	1.5	3.0
Ragger	11	95%	11.6	1.3	2.6
Junk Tower	3	20%	15.0	1.7	3.3
Sediminator	3	80%	3.8	0.4	0.8
				Total to Store On-Site:	31

Assumptions

ODTPD Wate Generated was taken off the P&ID

Assumed % Solids for All Waste. Used yeild studies from Deridder

20 yd BDI dumpsters weigh 1 ton. Can put 9 tons of waste into dumpster to stay under 10 ton

Want to have enough dumpsters on site to get us through 2 days of production

limit

From: Rachford, Skyler
Sent: Tuesday, December 15, 2020 5:32 PM
To: Theyerl, Philip <ptheyerl@packagingcorp.com>
Cc: Markland, Kasey <KaseyMarkland@packagingcorp.com>; Thorne, Heather <HeatherThorne@packagingcorp.com>;
Tobin, David <DavidTobin@packagingcorp.com>; Davis, Nick <NickDavis@packagingcorp.com>
Subject: OCC Seabright Rejects

Phil,

Here are the numbers I gave you over the phone:

BDI quote for services in 2021:

Delivery	\$56.50
20yd Haul	\$110.00
Weight	\$51.96 per ton
Mileage	\$3.20 per mile after 5 miles

The dumpsters for the Seabright weigh 5.625 tons. They are structurally reinforced, enclosed, and have BDIs custom undercarriage on them. BDI can only haul 10 tons with their trucks which includes the weight of the trailer. This means we can only put ~4 tons into a dumpster.

This is what we anticipate the rejects load out of the Seabright to be based on the balance:

450 TPD Production Rate - 35 ODTPD Rejects
650 TPD Production Rate - 48 ODTPD Rejects
800 TPD Production Rate - 58 ODTPD Rejects

These are oven dry tons, so really the raw tonnages that the extruder will produce looks like this (assuming the rejects exits the extruder at 60% solids):

450 TPD Production Rate - 58 TPD Rejects
650 TPD Production Rate - 80 TPD Rejects
800 TPD Production Rate - 97 TPD Rejects

If we use the Seabright dumpsters we would go through this amount of dumpsters per day:

450 TPD Production Rate - 14.5 Dumpsters/day
650 TPD Production Rate - 20 Dumpsters/day
800 TPD Production Rate - 24 Dumpsters/day

We would also need to change these out ourselves since BDI only operates Monday through Saturday from 7am to 9pm. They do not operate on Sunday so we will need to have enough dumpsters onsite to get us through Saturday night though Monday morning. We also currently don't have the man-power, nor the equipment, to swap these dumpsters every 1-2 hours.

For the cost aspect, using BDIs hauling costs, the cost to haul each dumpster is ~\$400/dumpster. The daily cost of this for each production rate is:

450 TPD Production Rate - \$5,800/day
650 TPD Production Rate - \$8,000/day
800 TPD Production Rate - \$9,600/day

From these numbers, the heavy Seabright dumpsters just don't seem feasible. We can look at alternative methods to put the seabright rejects into standard, open-top BDI dumpsters as they are considerably lighter (less than 1 ton). This would cause us fit more rejects into a dumpster and reduce the amount of hauls BDI would have to do. This would help reduce the cost, but the seabright rejects would need to be frequently picked up to dump into the BDI open-top

dumpster (roughly every 30 minutes at 450 tpd if we put a 4 yd self-dumping hopper under the Seabright. 15 minutes at 800 tpd). It may be worth looking into adding an additional shift utility if this is the route we choose to go.

Just wanted to get the conversation started on this. I think any input would be appreciated here.

Thanks,

Skyler Rachford

Assistant Supt. – OCC & Recycled Fiber

Office: Ext. 3327

Cell: (509) 316-1354

SkylerRachford@packagingcorp.com



Wallula, WA

From: Holm, Sam

Sent: Thursday, December 17, 2020 7:43 AM

To: Rachford, Skyler <SkylerRachford@packagingcorp.com>

Subject: FW: BDI contact

Skyler

I'm going back to the table with BDI

Can send me your notes related to cost per ton

Thanks.

Samuel Holm

C# 509-627-9155

From: Gibson, Paul <PaulGibson@packagingcorp.com>

Sent: Thursday, December 17, 2020 7:42 AM

To: Butkus, Paul <PaulButkus@packagingcorp.com>; Holm, Sam <SamHolm@packagingcorp.com>

Subject: RE: BDI contact

Kris May

(509) 546-7706 Work
(509) 547-2476 Work
kris@basindisposal.com

Basin Disposal
PO Box 3850
Pasco, WA 99302-3850

Paul Gibson

Environmental Specialist

31831 W Hwy 12

Wallula, WA 99363

Office: 509-546-3421

Cell: 509-987-7641



From: Holm, Sam <SamHolm@packagingcorp.com>
Sent: Wednesday, December 16, 2020 4:31 PM
To: Butkus, Paul <PaulButkus@packagingcorp.com>
Subject: BDI contact

Paul
Who do you talk with at BDI...send me your contact please.
I am going to setup a meeting to negotiate a better deal.

Thanks.

Samuel Holm
C# 509-627-9155

From: Rachford, Skyler [/O=PACKAGINGCORP/OU=EXCHANGE ADMINISTRATIVE GROUP (FYDIBOHF23SPDLT)/CN=RECIPIENTS/CN=6784500E517C498EB9DB9CEE3FB99590-RACHFORD,]
Sent: 12/17/2020 8:08:06 PM
To: Holm, Sam [/o=PackagingCorp/ou=Exchange Administrative Group (FYDIBOHF23SPDLT)/cn=Recipients/cn=e53d662511a94bd591eea1f8d5de3110-Holm, Sam]
CC: Markland, Kasey [/o=PackagingCorp/ou=Exchange Administrative Group (FYDIBOHF23SPDLT)/cn=Recipients/cn=55bb92fcae1a4f0d9abc5ec11ebc38da-Markland,]; Thorne, Heather [/o=PackagingCorp/ou=Exchange Administrative Group (FYDIBOHF23SPDLT)/cn=Recipients/cn=127a9885a7b446e48b39bbaf6e0f6170-Thorne, He]
Subject: RE: BDI contact
Attachments: OCC Rejects Dumpsters.xlsx

Sam,

Model looks good to me! The negotiation seems very reasonable.

Looking at the numbers again it looks like we will need 17, 20 yd BDI dumpsters for start up on 450 tpd. The calculations are on my spreadsheet attached.

Thanks,

Skyler Rachford

Assistant Supt. – OCC & Recycled Fiber

Office: Ext. 3327

Cell: (509) 316-1354

SkylerRachford@packagingcorp.com



Wallula, WA

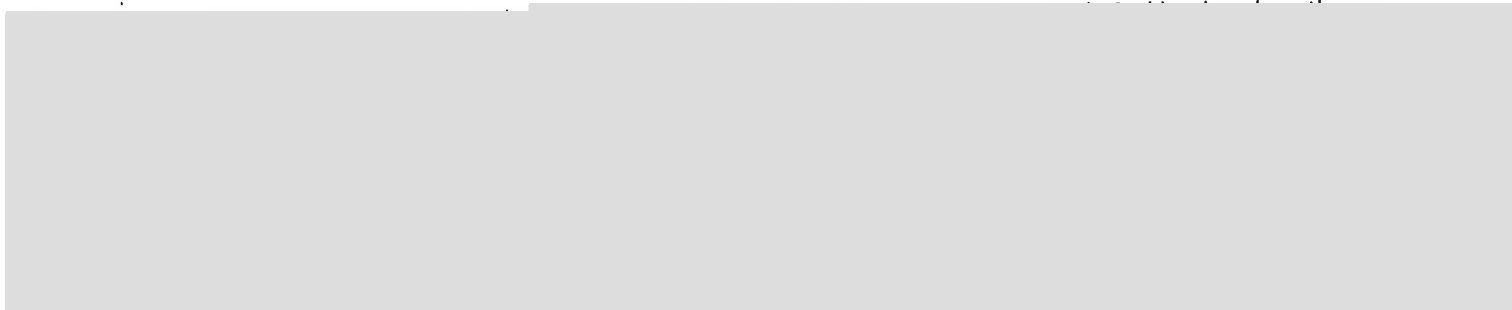
From: Holm, Sam
Sent: Thursday, December 17, 2020 10:07 AM
To: Rachford, Skyler <SkylerRachford@packagingcorp.com>
Subject: RE: BDI contact

Skyler

Please take a look at my model. NOT looking at Seabright at all, only BDI.

I captured the mileage from BDI transfer to the mill total of 27 miles round trip less the 5 miles they don't charge for.

My baseline total per haul calculates out to \$704.54 based BDI's numbers and using 9 tons / dumpster.



- Win / win they gain business and we have an affordable waste outlet

Check my month and let me know if you concur.

Samuel Holm
C# 509-627-9155

From: Rachford, Skyler <SkylerRachford@packagingcorp.com>
Sent: Thursday, December 17, 2020 7:56 AM
To: Holm, Sam <SamHolm@packagingcorp.com>
Subject: RE: BDI contact

Sam,

Here you go! The calculations below are for if we are using the Seabright dumpsters that weigh close to 6 tons. The standard BDI dumpsters weigh about 1 ton so we can put 9 tons of waste in those as opposed to 4. If you add up the delivery fee, the haul fee, and the mileage it is basically about \$211 per raw haul. Then we have the weight charge on top of that per ton of waste.

Let me know if you need anything else.

Skyler

Kurt,

Here is the write up I sent to Phil yesterday.

Here are some additional numbers that will be useful in determining a path forward:

- An empty Seabright Dumpster weighs 5.625 tons
- I do not believe this includes the weight of the undercarriage that is added by the hauler.
- Rejects exiting Seabright are estimated to be about 60% solids
- You will typically see solids content anywhere between 50 and 80%. This largely depends on maintenance of the unit and how much fiber is in the rejects steam.
- Density of the Rejects exiting the Seabright is estimated to be 750 lbs/yd³

Skyler Rachford
Assistant Supt. – OCC & Recycled Fiber
Office: Ext. 3327
Cell: (509) 316-1354
SkylerRachford@packagingcorp.com



Wallula, WA

From: Rachford, Skyler
Sent: Tuesday, December 15, 2020 5:32 PM
To: Theyerl, Philip <ptheyerl@packagingcorp.com>
Cc: Markland, Kasey <KaseyMarkland@packagingcorp.com>; Thorne, Heather <HeatherThorne@packagingcorp.com>;
Tobin, David <DavidTobin@packagingcorp.com>; Davis, Nick <NickDavis@packagingcorp.com>
Subject: OCC Seabright Rejects

Phil,

Here are the numbers I gave you over the phone:

BDI quote for services in 2021:

Delivery	\$56.50
20yd Haul	\$110.00
Weight	\$51.96 per ton
Mileage	\$3.20 per mile after 5 miles

The dumpsters for the Seabright weigh 5.625 tons. They are structurally reinforced, enclosed, and have BDIs custom undercarriage on them. BDI can only haul 10 tons with their trucks which includes the weight of the trailer. This means we can only put ~4 tons into a dumpster.

This is what we anticipate the rejects load out of the Seabright to be based on the balance:

450 TPD Production Rate	- 35 ODTPD Rejects
650 TPD Production Rate	- 48 ODTPD Rejects
800 TPD Production Rate	- 58 ODTPD Rejects

These are oven dry tons, so really the raw tonnages that the extruder will produce looks like this (assuming the rejects exits the extruder at 60% solids):

450 TPD Production Rate	- 58 TPD Rejects
650 TPD Production Rate	- 80 TPD Rejects
800 TPD Production Rate	- 97 TPD Rejects

If we use the Seabright dumpsters we would go through this amount of dumpsters per day:

450 TPD Production Rate	- 14.5 Dumpsters/day
650 TPD Production Rate	- 20 Dumpsters/day
800 TPD Production Rate	- 24 Dumpsters/day

We would also need to change these out ourselves since BDI only operates Monday through Saturday from 7am to 9pm. They do not operate on Sunday so we will need to have enough dumpsters onsite to get us through Saturday night though Monday morning. We also currently don't have the man-power, nor the equipment, to swap these dumpsters every 1-2 hours.

For the cost aspect, using BDIs hauling costs, the cost to haul each dumpster is ~\$400/dumpster. The daily cost of this for each production rate is:

450 TPD Production Rate	- \$5,800/day
650 TPD Production Rate	- \$8,000/day
800 TPD Production Rate	- \$9,600/day

From these numbers, the heavy Seabright dumpsters just don't seem feasible. We can look at alternative methods to put the seabright rejects into standard, open-top BDI dumpsters as they are considerably lighter (less than 1 ton). This would cause us fit more rejects into a dumpster and reduce the amount of hauls BDI would have to do. This would help reduce the cost, but the seabright rejects would need to be frequently picked up to dump into the BDI open-top

dumpster (roughly every 30 minutes at 450 tpd if we put a 4 yd self-dumping hopper under the Seabright. 15 minutes at 800 tpd). It may be worth looking into adding an additional shift utility if this is the route we choose to go.

Just wanted to get the conversation started on this. I think any input would be appreciated here.

Thanks,

Skyler Rachford

Assistant Supt. – OCC & Recycled Fiber

Office: Ext. 3327

Cell: (509) 316-1354

SkylerRachford@packagingcorp.com



Wallula, WA

From: Holm, Sam

Sent: Thursday, December 17, 2020 7:43 AM

To: Rachford, Skyler <SkylerRachford@packagingcorp.com>

Subject: FW: BDI contact

Skyler

I'm going back to the table with BDI

Can send me your notes related to cost per ton

Thanks.

Samuel Holm

C# 509-627-9155

From: Gibson, Paul <PaulGibson@packagingcorp.com>

Sent: Thursday, December 17, 2020 7:42 AM

To: Butkus, Paul <PaulButkus@packagingcorp.com>; Holm, Sam <SamHolm@packagingcorp.com>

Subject: RE: BDI contact

Kris May

(509) 544-7706 Work

(509) 547-2476 Work

kris@basindisposal.com

Basin Disposal

PO Box 3850

Pasco, WA 99302-3850

Paul Gibson

Environmental Specialist

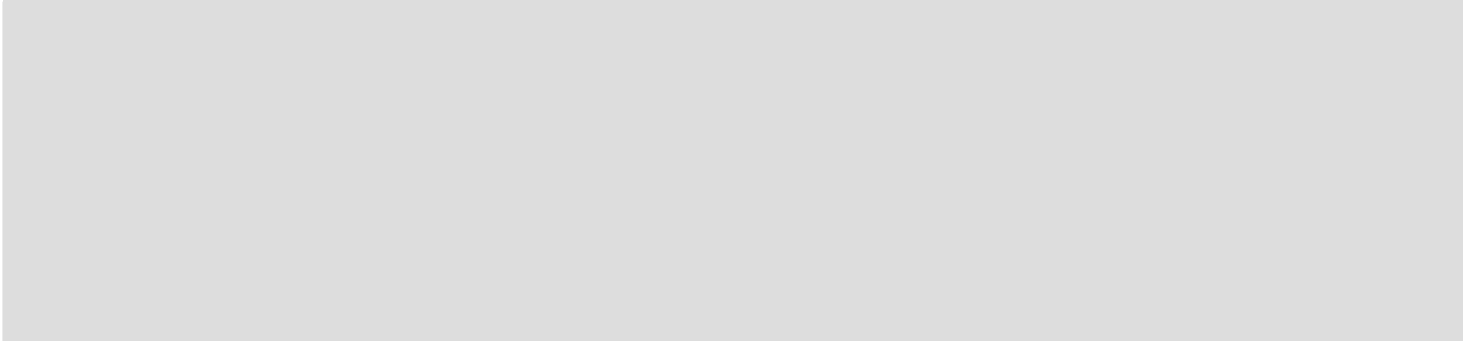
31831 W Hwy 12

Wallula, WA 99363

Office: 509-546-3421

Cell: 509-987-7641

From: Butkus, Paul
Sent: Thursday, December 17, 2020 7:00 AM
To: Gibson, Paul <PaulGibson@packagingcorp.com>; Holm, Sam <SamHolm@packagingcorp.com>
Subject: FW: BDI contact



From: Holm, Sam <SamHolm@packagingcorp.com>
Sent: Wednesday, December 16, 2020 4:31 PM
To: Butkus, Paul <PaulButkus@packagingcorp.com>
Subject: BDI contact

Paul
Who do you talk with at BDI...send me your contact please.
I am going to setup a meeting to negotiate a better deal.

Thanks.

Samuel Holm
C# 509-627-9155

From: Thorne, Kurt [/O=PACKAGINGCORP/OU=EXCHANGE ADMINISTRATIVE GROUP (FYDIBOHF23SPDLT)/CN=RECIPIENTS/CN=63A0FE866D634B9EB2C1C186AAB09C38-THORNE, KU]
Sent: 1/20/2021 10:38:38 PM
To: Holm, Sam [/o=PackagingCorp/ou=Exchange Administrative Group (FYDIBOHF23SPDLT)/cn=Recipients/cn=e53d662511a94bd591eea1f8d5de3110-Holm, Sam]; Markland, Kasey [/o=PackagingCorp/ou=Exchange Administrative Group (FYDIBOHF23SPDLT)/cn=Recipients/cn=55bb92f0ce1a4f0d9abc5ec11ebc38da-Markland,]
Subject: OCC Rejects to Landfill

Do we have a good yearly estimate of costs associated with sending OCC rejects to the landfill? Thanks.

Kurt

From: Markland, Kasey [/O=PACKAGINGCORP/OU=EXCHANGE ADMINISTRATIVE GROUP (FYDIBOHF23SPDLT)/CN=RECIPIENTS/CN=55BB92FCCE1A4F0D9ABC5EC11EBC38DA-MARKLAND,]
Sent: 1/21/2021 12:22:39 AM
To: Rachford, Skyler [/o=PackagingCorp/ou=Exchange Administrative Group (FYDIBOHF23SPDLT)/cn=Recipients/cn=6784500e517c498eb9db9cee3fb99590-Rachford,]
Subject: FW: OCC Rejects to Landfill

From: Thorne, Kurt
Sent: Wednesday, January 20, 2021 2:39 PM
To: Holm, Sam <SamHolm@packagingcorp.com>; Markland, Kasey <KaseyMarkland@packagingcorp.com>
Subject: OCC Rejects to Landfill

Do we have a good yearly estimate of costs associated with sending OCC rejects to the landfill? Thanks.

Kurt

From: Thorne, Kurt [/O=PACKAGINGCORP/OU=EXCHANGE ADMINISTRATIVE GROUP (FYDIBOHF23SPDLT)/CN=RECIPIENTS/CN=63A0FE866D634B9EB2C1C186AAB09C38-THORNE, KU]
Sent: 1/22/2021 9:59:34 PM
To: Markland, Kasey [/o=PackagingCorp/ou=Exchange Administrative Group (FYDIBOHF23SPDLT)/cn=Recipients/cn=55bb92fcce1a4f0d9abc5ec11ebc38da-Markland,]; Rachford, Skyler [/o=PackagingCorp/ou=Exchange Administrative Group (FYDIBOHF23SPDLT)/cn=Recipients/cn=6784500e517c498eb9db9cee3fb99590-Rachford,]
Subject: Cost of BDI hauling OCC Rejects

Any luck getting what it will cost for BDI to haul OCC rejects?

Kurt Thorne
Operations Manager
PCA, Wallula
509-987-7638

From: Rachford, Skyler [/O=PACKAGINGCORP/OU=EXCHANGE ADMINISTRATIVE GROUP (FYDIBOHF23SPDLT)/CN=RECIPIENTS/CN=6784500E517C498EB9DB9CEE3FB99590-RACHFORD,]
Sent: 1/22/2021 10:17:14 PM
To: Thorne, Kurt [/o=PackagingCorp/ou=Exchange Administrative Group (FYDIBOHF23SPDLT)/cn=Recipients/cn=63a0fe866d634b9eb2c1c186aab09c38-Thorne, Ku]; Markland, Kasey [/o=PackagingCorp/ou=Exchange Administrative Group (FYDIBOHF23SPDLT)/cn=Recipients/cn=55bb92fcce1a4f0d9abc5ec11ebc38da-Markland,]
Subject: RE: Cost of BDI hauling OCC Rejects
Attachments: BDI Negotiations Cost Model.xlsx

Here's a model Sam made-up and sent me awhile back. He was attempting to negotiate with BDI to have them eliminate the dumpster delivery fee and the flat haul fee. The "Seabright" calculations are for the 6 ton Seabright dumpsters and the "BDI" calculations are for the 1 ton BDI dumpsters. We've already decided to use the BDI dumpsters at this point.

This shows the yearly costs for BDI hauling rejects at the 450, 650, and 800 TPD production rates with and without the flat fees waived. Keep in mind, that this just shows the costs for the Process rejects from the Seabright. I would add an additional 50% to these costs for the final estimate to include the other reject streams (Junk Tower Heavies, Ragger Tail, Effluent Solids, Sedimator, ect.)

Skyler Rachford

Assistant Supt. – OCC & Recycled Fiber

Office: Ext. 3327

Cell: (509) 316-1354

SkylerRachford@packagingcorp.com



Wallula, WA

From: Thorne, Kurt
Sent: Friday, January 22, 2021 2:00 PM
To: Markland, Kasey <KaseyMarkland@packagingcorp.com>; Rachford, Skyler <SkylerRachford@packagingcorp.com>
Subject: Cost of BDI hauling OCC Rejects

Any luck getting what it will cost for BDI to haul OCC rejects?

Kurt Thorne
Operations Manager
PCA, Wallula
509-987-7638

BDI			
Delivery			\$ 56.50
20yd Haul			\$ 110.00
Weight	9	51.96	\$ 467.64
Mileage	3.2	22	\$ 70.40
total per raw haul			\$ 236.90
total w/weight			\$ 704.54

BASELINE			
Bin Type	Bin Wgt (Tons)	Mtl Wgt (Tons)	
seabright	6	4	
bdi	1	9	
	TPD	TDP rejects	# of bins daily
seabright	450	58	15
	650	80	20
	800	97	24
bdi	450	58	6
	650	80	9
	800	97	11

BDI			
Delivery			\$ -
20yd Haul			\$ -
Weight	9	42	\$ 378.00
Mileage	\$ 2.50	22	\$ 55.00
total per raw haul			\$ 55.00
total w/weight			\$ 433.00

flat rate per haul			
Bin Type	Bin Wgt (Tons)	Mtl Wgt (Tons)	
seabright	6	4	
bdi	1	9	
	TPD	TDP rejects	# of bins daily
seabright	450	58	15
	650	80	20
	800	97	24
bdi	450	58	6
	650	80	9
	800	97	11

decrease dollars per mile; weight cost per ton
 eliminate delivery and 20yd haul

ANNUALIZED

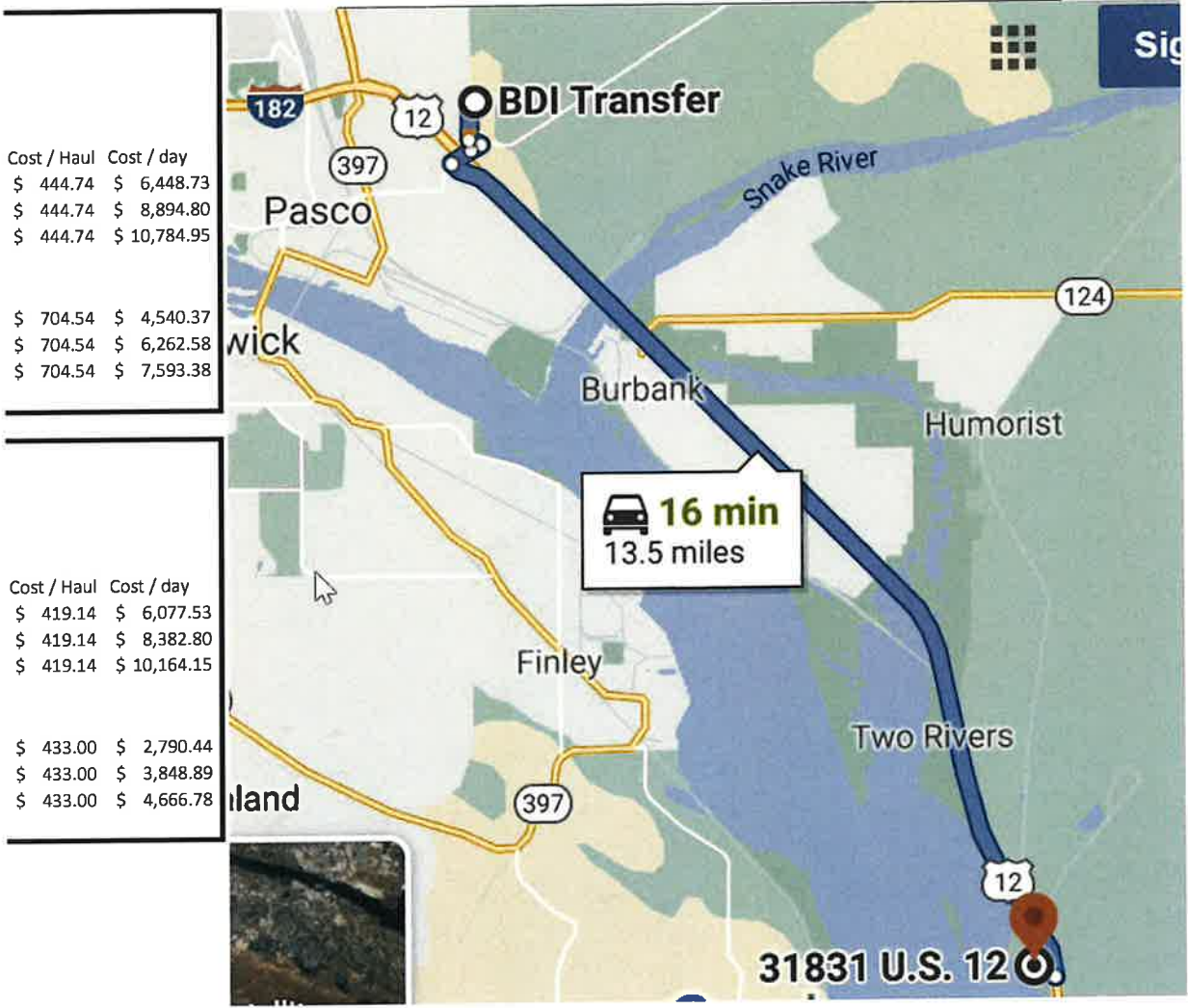
BASELINE			
365	365	365	
\$ 4,540.37	\$ 6,262.58	\$ 7,593.38	
\$ 1,657,234.64	\$ 2,285,840.89	\$ 2,771,582.08	

FLAT RATE HAUL			
365	365	365	
\$ 2,790.44	\$ 3,848.89	\$ 4,666.78	
\$ 1,018,512.22	\$ 1,404,844.44	\$ 1,703,373.89	

\$ (638,722.42) \$ (880,996.44) \$ (1,068,208.19) annual savings

WEEKENDS NEED TO STAGE ABOUT 14 DUMPSTERS TO ACCOUNT FOR
 NO SUNDAY SERVICE

INITIAL DELIVERY 20 DUMPSTERS \$ 2,460.00



Cost / Haul	Cost / day
\$ 444.74	\$ 6,448.73
\$ 444.74	\$ 8,894.80
\$ 444.74	\$ 10,784.95
\$ 704.54	\$ 4,540.37
\$ 704.54	\$ 6,262.58
\$ 704.54	\$ 7,593.38

Cost / Haul	Cost / day
\$ 419.14	\$ 6,077.53
\$ 419.14	\$ 8,382.80
\$ 419.14	\$ 10,164.15
\$ 433.00	\$ 2,790.44
\$ 433.00	\$ 3,848.89
\$ 433.00	\$ 4,666.78

From: Holm, Sam [/O=PACKAGINGCORP/OU=EXCHANGE ADMINISTRATIVE GROUP (FYDIBOHF23SPDLT)/CN=RECIPIENTS/CN=E53D662511A94BD591EEA1F8D5DE3110-HOLM, SAM]
Sent: 1/26/2021 4:29:43 PM
To: Thorne, Kurt [/o=PackagingCorp/ou=Exchange Administrative Group (FYDIBOHF23SPDLT)/cn=Recipients/cn=63a0fe866d634b9eb2c1c186aab09c38-Thorne, Ku]; Rachford, Skyler [/o=PackagingCorp/ou=Exchange Administrative Group (FYDIBOHF23SPDLT)/cn=Recipients/cn=6784500e517c498eb9db9cee3fb99590-Rachford,]
Subject: BDI cost proposal for OCC waste
Attachments: Copy of OCC Rejects Dumpsters.xlsx

From: Thorne, Kurt [/O=PACKAGINGCORP/OU=EXCHANGE ADMINISTRATIVE GROUP (FYDIBOHF23SPDLT)/CN=RECIPIENTS/CN=63A0FE866D634B9EB2C1C186AAB09C38-THORNE, KU]
Sent: 1/28/2021 6:38:43 PM
To: Curtis, Brandon [/o=PackagingCorp/ou=Exchange Administrative Group (FYDIBOHF23SPDLT)/cn=Recipients/cn=2dba301a0f734a85bfc894b803244bdb-Curtis, Br]; Moore, Brandon [/o=PackagingCorp/ou=Exchange Administrative Group (FYDIBOHF23SPDLT)/cn=Recipients/cn=82251189ea7c4da3a2b0f3adc86db2ee-CBM3807]; Theyerl, Philip [/o=PackagingCorp/ou=Exchange Administrative Group (FYDIBOHF23SPDLT)/cn=Recipients/cn=dfb183a66efd46a9aec7e068a5f7a56f-PMT6937]; Davis, Nick [/o=PackagingCorp/ou=Exchange Administrative Group (FYDIBOHF23SPDLT)/cn=Recipients/cn=59548d657bce4e2c93fafc583ac2f53a-Davis, Nic]; Tobin, David [/o=PackagingCorp/ou=Exchange Administrative Group (FYDIBOHF23SPDLT)/cn=Recipients/cn=7b31b160dee345568f3d794f235399ae-Tobin, Dav]; Butkus, Paul [/o=PackagingCorp/ou=Exchange Administrative Group (FYDIBOHF23SPDLT)/cn=Recipients/cn=34f438ff2ff749cb9657ed5baeef4bd1-Butkus, Pa]; Markland, Kasey [/o=PackagingCorp/ou=Exchange Administrative Group (FYDIBOHF23SPDLT)/cn=Recipients/cn=55bb92fcce1a4f0d9abc5ec11ebc38da-Markland,]; Rachford, Skyler [/o=PackagingCorp/ou=Exchange Administrative Group (FYDIBOHF23SPDLT)/cn=Recipients/cn=6784500e517c498eb9db9cee3fb99590-Rachford,]; Stevens, Jeff [/o=PackagingCorp/ou=Exchange Administrative Group (FYDIBOHF23SPDLT)/cn=Recipients/cn=a67b98ab155e4d6c82e7ba27fed8c5f2-Stevens, J]; Wilhelm, Brian [/o=PackagingCorp/ou=Exchange Administrative Group (FYDIBOHF23SPDLT)/cn=Recipients/cn=a4026b7f7c424e80a477fe21a993aa85-Wilhelm, B]; Holm, Sam [/o=PackagingCorp/ou=Exchange Administrative Group (FYDIBOHF23SPDLT)/cn=Recipients/cn=e53d662511a94bd591eea1f8d5de3110-Holm, Sam]

Subject: OCC Rejects: Burning in Hog versus Hauling to BDI
Attachments: Hog Fuel Resurrection Costs.xlsx; Copy of OCC Rejects Dumpsters.xlsx
Location: WLL Training Room 115

Start: 2/1/2021 6:00:00 PM
End: 2/1/2021 6:30:00 PM
Show Time As: Tentative

Required Attendees: Curtis, Brandon; Moore, Brandon; Theyerl, Philip; Davis, Nick; Tobin, David; Butkus, Paul; Markland, Kasey; Rachford, Skyler; Stevens, Jeff; Wilhelm, Brian; Holm, Sam

COST COMPARISON OVERVIEW

- OCC
- BDI cost to haul rejects (assuming 650 tpd rate): \$2.9MM

ENVIRONMENTAL INFO

Permit Project Description

F

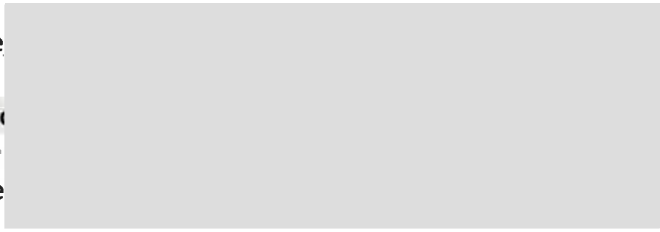
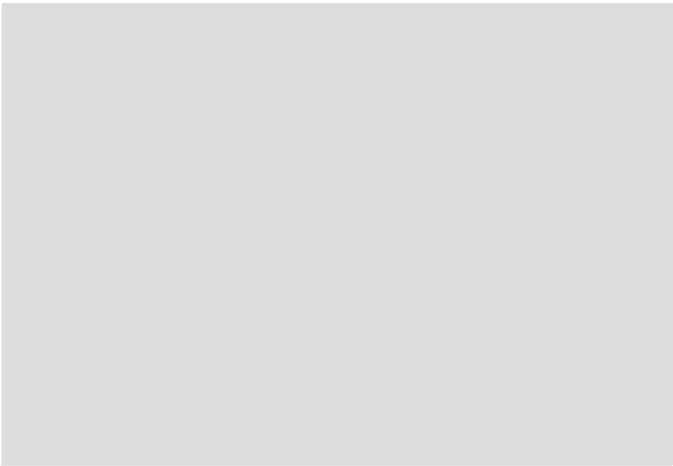
450 TPD Production Rate							
OCC Dumpsters	ODTPD Waste Generated	Estimated % Solids	Actual TPD Waste Generated	Dumpsters Used Per Day	Number of Dumpsters to Store On-Site	BDI COST PER DUMPSTER HAUL	
Seabright	35	60%	58.3	6.5	13.0	Delivery \$ -	
Effluent	2	30%	6.7	0.7	1.5	20YD Haul \$ 110.28	
Ragger	3	95%	3.2	0.4	0.7	Disposal - Pass Through \$ 479.34	
Junk Tower	1	20%	5.0	0.6	1.1	Mileage \$ 70.62	
Sediminator	1	80%	1.3	0.1	0.3	TOTAL PER HAUL COST \$ 660.24	
Total to Store On Site:					17	EST. 9 DUMPSTER / DAY \$ 5,942.16	\$ 2,168,888.40

Notes:
 delivery charge removed
 BDI revenue
 disposal site owned by CBLLC no affiliation to
 BDI revenue; \$3.21/mile after 5 miles

650 TPD Production Rate							
OCC Dumpsters	ODTPD Waste Generated	Estimated % Solids	Actual TPD Waste Generated	Dumpsters Used Per Day	Number of Dumpsters to Store On-Site	BDI COST PER DUMPSTER HAUL	
Seabright	48	60%	80.0	8.9	17.8	Delivery \$ -	
Effluent	3	30%	10.0	1.1	2.2	20YD Haul \$ 110.28	
Ragger	4	95%	4.2	0.5	0.9	Disposal - Pass Through \$ 479.34	
Junk Tower	2	20%	10.0	1.1	2.2	Mileage \$ 70.62	
Sediminator	2	80%	2.5	0.3	0.6	TOTAL PER HAUL COST \$ 660.24	
Total to Store On Site:					24	EST. 12 DUMPSTER / DAY \$ 7,922.88	\$ 2,891,851.20

Assumptions
 ODTDP Waste Generated was taken off the P&
 Assumed % Solids for All Waste. Used yield sti
 20 yd BDI dumpsters weigh 1 ton. Can put 9 t
 Want to have enough dumpsters on site to ge

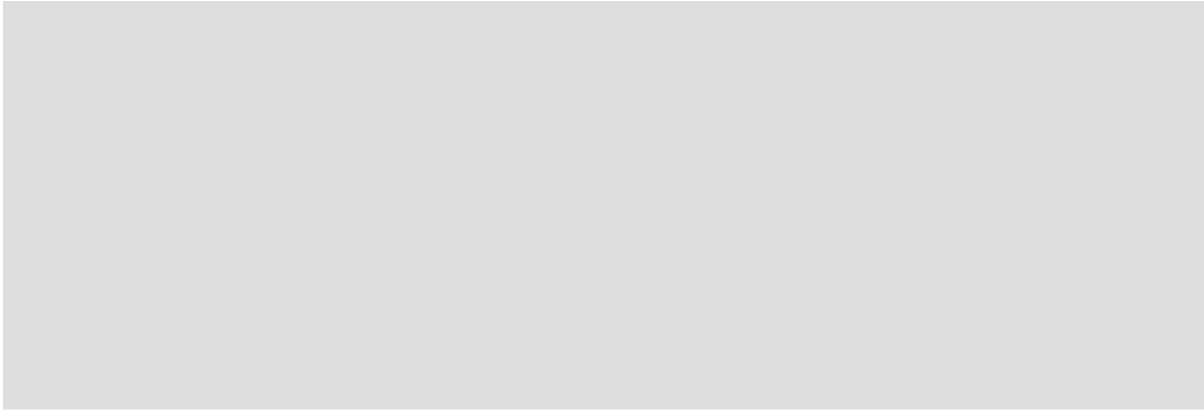
800 TPD Production Rate							
OCC Dumpsters	ODTPD Waste Generated	Estimated % Solids	Actual TPD Waste Generated	Dumpsters Used Per Day	Number of Dumpsters to Store On-Site	BDI COST PER DUMPSTER HAUL	
Seabright	58	60%	96.7	10.7	21.5	Delivery \$ -	
Effluent	4	30%	13.3	1.5	3.0	20YD Haul \$ 110.28	
Ragger	11	95%	11.6	1.3	2.6	Disposal - Pass Through \$ 479.34	
Junk Tower	3	20%	15.0	1.7	3.3	Mileage \$ 70.62	
Sediminator	3	80%	3.8	0.4	0.8	TOTAL PER HAUL COST \$ 660.24	
Total to Store On Site:					31	EST. 15 DUMPSTER / DAY \$ 9,903.60	\$ 3,614,814.00



OCC Rejects Landfill Costs: \$2,000,000

vn Cover Sheets\2020 Hog Boiler ASD Cover Sheet.xlsx
iler\Hog Fuel ASD 2019 - Major\2019 Hog Boiler ASD Sheet.xlsx

annually







From: Butkus, Paul [/O=PACKAGINGCORP/OU=EXCHANGE ADMINISTRATIVE GROUP (FYDIBOHF23SPDLT)/CN=RECIPIENTS/CN=34F438FF2FF749CB9657ED5BAEEF4BD1-BUTKUS, PA]
Sent: 2/1/2021 6:58:49 PM
To: Ramos, Charleston [/o=PackagingCorp/ou=Exchange Administrative Group (FYDIBOHF23SPDLT)/cn=Recipients/cn=c6036e8c448d446e8ade897c8fc77307-Ramos, Cha]
Subject: OCC Rejects Disposal

FYI – I sat in on a meeting this morning about management of OCC rejects and it was decided to move forward with the plan to landfill all rejects for the first year to better evaluate landfill costs vs burning the portion that qualifies as paper recycling residuals. So, no anticipation of burning rejects for a while, if ever.

From: Kris May [kris@basindisposal.com]
Sent: 12/30/2020 7:42:18 PM
To: Holm, Sam [/o=PackagingCorp/ou=Exchange Administrative Group (FYDIBOHF23SPDLT)/cn=Recipients/cn=e53d662511a94bd591eea1f8d5de3110-Holm, Sam]; Charlie Dietrich [charlied@basindisposal.com]
CC: Rachford, Skyler [/o=PackagingCorp/ou=Exchange Administrative Group (FYDIBOHF23SPDLT)/cn=Recipients/cn=6784500e517c498eb9db9cee3fb99590-Rachford,]
Subject: [EXTERNAL] RE: OCC BDI Dumpster Locations

Sam and Skyler,

I now have the pricing for 2021 for the 20yd containers. They are minimal changes on the prices but I wanted to make sure you had accurate information.

Delivery	\$56.64
20yd Haul	\$110.28
Tip Fee	\$53.26 per ton
Mileage	\$3.21 per mile

Thank you,

Kris May

509-544-7706 direct line
509-547-2476 office
509-547-8617 fax

BASIN
disposal

PO Box 3850
Pasco, WA 99302-3850

From: Holm, Sam <SamHolm@packagingcorp.com>
Sent: Wednesday, December 30, 2020 11:36 AM
To: Charlie Dietrich <charlied@basindisposal.com>; Kris May <kris@basindisposal.com>
Subject: FW: OCC BDI Dumpster Locations

Charlie and Kris

Attached is the birds eye view of the OCC plant and below are some comments from Skyler on process.

Samuel Holm
C# 509-627-9155

From: Rachford, Skyler <SkylerRachford@packagingcorp.com>
Sent: Tuesday, December 29, 2020 5:02 PM

To: Holm, Sam <SamHolm@packagingcorp.com>
Cc: Markland, Kasey <KaseyMarkland@packagingcorp.com>
Subject: OCC BDI Dumpster Locations

Sam,

Attached is the locations for the BDI dumpsters and traffic flow for their trucks at OCC. I put down that their trucks can enter through either gate 1 or 3.

Thanks,

Skyler Rachford

Assistant Supt. – OCC & Recycled Fiber

Office: Ext. 3327

Cell: (509) 316-1354

SkylerRachford@packagingcorp.com



Wallula, WA

From: DoNotReply@packagingcorp.com <DoNotReply@packagingcorp.com>

Sent: Tuesday, December 29, 2020 4:59 PM

To: Rachford, Skyler <SkylerRachford@packagingcorp.com>

Subject: Scan from Wallula STS Building

From: BDI CS [BDICS@basindisposal.com]
Sent: 1/14/2021 12:25:53 AM
To: Ferguson, Glenn [/o=PackagingCorp/ou=Exchange Administrative Group (FYDIBOHF23SPDLT)/cn=Recipients/cn=e432dbf6c726616b98d53-Ferguson,]
CC: Markland, Kasey [/o=PackagingCorp/ou=Exchange Administrative Group (FYDIBOHF23SPDLT)/cn=Recipients/cn=55bb92f9ce1a4f0d9abc5ec11ebc38da-Markland,]
Subject: [EXTERNAL] RE: PO216677.pdf

Hello,

The PO has been updated.

Thank you,

Basin Disposal

📍 PO Box 3850, Pasco, WA 99302
☎ 509-547-2476 Main office | 509-547-8617 fax
@ bdics@basindisposal.com | www.basindisposal.com



From: Ferguson, Glenn [mailto:GlennFerguson@packagingcorp.com]
Sent: Wednesday, January 13, 2021 3:25 PM
To: BDI CS <BDICS@basindisposal.com>
Cc: Markland, Kasey <KaseyMarkland@packagingcorp.com>
Subject: PO216677.pdf

Please acknowledge receipt of the attached 2021 blanket purchase order request. Note this PO replaces our 2020 blanket PO 206057 effective 1/1/2021 through 12/31/2021.

Thanks,

Glenn



Glenn Ferguson
Purchasing Agent
509.545.3230 office
208.395.7589 fax
GlennFerguson@packagingcorp.com

Packaging Corporation of America
Wallula Mill
PO Box 138
31831 West Highway 12
Wallula, WA 99363

BILL TO:
 PACKAGING CORP OF AMERICA
 ACCOUNTS PAYABLE
 PO BOX 138
 WALLULA, WA 99363-0138

STMT #: 3878877
 STMT DATE: 03/31/21
 DUE DATE: 04/15/21
 DELQ DATE: 04/30/21
 ACCT NBR: 1924900

SERVICE AT: 31831 W HIGHWAY 12

PREVIOUS BALANCE: 1567.48
 PAYMENTS & CREDITS: 0.00
 NEW ACTIVITY: 85847.31
 TOTAL DUE: 87414.79

DATE	DESCRIPTION	REFERENCE	QTY	TOTAL
03/02/21	20YD DROP BOX			
HAUL	1129617		1	110.28
03/02/21	PLP Superfund Cleanup			
Sur	1129617		5.2	13.47
03/02/21	MILEAGE			
CHARGE	1129617		10	3
2.10				
03/02/21	DISPOSAL ROLL	1129617 - Material Ref		
291674	5.2	276.95		
03/03/21	20YD DROP BOX			
HAUL	1130249		1	110.28
03/03/21	PLP Superfund Cleanup			
Sur	1130249		8.71	22.56
03/03/21	MILEAGE			
CHARGE	1130249		10	3
2.10				
03/03/21	DISPOSAL ROLL	1130249 - Material Ref		
292016	8.71	463.89		
03/04/21	20YD TEMP			
HAUL	1128301		1	130.
33				
03/04/21	PLP Superfund Cleanup			
Sur	1128301		11.27	29.19
03/04/21	MILEAGE			
CHARGE	1128301		10	3
2.10				
03/04/21	DISPOSAL ROLL	1128301 - Material Ref		
292216	11.27	600.24		
03/04/21	20YD TEMP			
HAUL	1128302		1	130.
33				
03/04/21	PLP Superfund Cleanup			
Sur	1128302		12.91	33.44
03/04/21	MILEAGE			
CHARGE	1128302		10	3
2.10				
03/04/21	DISPOSAL ROLL	1128302 - Material Ref		
292182	12.91	687.59		

BASIN DISPOSAL INC
 PO Box 3850
 Pasco, WA 99302
 509-547-2476

BILL TO:
 PACKAGING CORP OF AMERICA
 ACCOUNTS PAYABLE
 PO BOX 138
 WALLULA, WA 99363-0138

STMT #: 3878877
 STMT DATE: C3/31/21
 DUE DATE: C4/15/21
 DELQ DATE: C4/30/21
 ACCT NBR: 1924900

SERVICE AT: 31831 W HIGHWAY 12

PREVIOUS BALANCE: 1567.48
 PAYMENTS & CREDITS: C.00
 NEW ACTIVITY: 85847.31
 TOTAL DUE: 87414.79

DATE	DESCRIPTION	REFERENCE	QTY	TOTAL
03/02/21	20YD DROP BOX HAUL	1129617		
03/02/21	PLP Superfund Cleanup Sur	1129617	1	110.28
03/02/21	MILEAGE CHARGE	1129617	5.2	13.47
03/02/21	DISPCAL ROLL	1129617	10	32.10
03/03/21	20YD DROP BOX HAUL	1130249	5.2	276.95
03/03/21	PLP Superfund Cleanup Sur	1130249	1	110.28
03/03/21	MILEAGE CHARGE	1130249	8.71	22.56
03/03/21	DISPCAL ROLL	1130249	10	32.10
03/04/21	20YD TEMP HAUL	1128301	8.71	463.89
03/04/21	PLP Superfund Cleanup Sur	1128301	1	130.33
03/04/21	MILEAGE CHARGE	1128301	11.27	29.19
03/04/21	DISPCAL ROLL	1128301	10	32.10
03/04/21	20YD TEMP HAUL	1128302	11.27	600.24
03/04/21	PLP Superfund Cleanup Sur	1128302	1	130.33
03/04/21	MILEAGE CHARGE	1128302	12.91	33.44
03/04/21	DISPCAL ROLL	1128302	10	32.10
03/04/21	20YD TEMP HAUL	1130592	12.91	687.59
03/04/21	PLP Superfund Cleanup Sur	1130592	1	130.33
03/04/21	MILEAGE CHARGE	1130592	8.82	22.84
03/04/21	DISPCAL ROLL	1130592	10	32.10
03/04/21	20YD TEMP HAUL	1130593	8.82	469.75
03/04/21	PLP Superfund Cleanup Sur	1130593	1	130.33
03/04/21	MILEAGE CHARGE	1130593	8.01	20.75
03/04/21	DISPCAL ROLL	1130593	10	32.10
03/05/21	20YD TEMP HAUL	1128390	8.01	426.61
03/05/21	PLP Superfund Cleanup Sur	1128390	1	130.33
03/05/21	MILEAGE CHARGE	1128390	12.36	32.01
03/05/21	DISPCAL ROLL	1128390	10	32.10
03/05/21	20YD TEMP HAUL	1128391	12.36	658.29
03/05/21	PLP Superfund Cleanup Sur	1128391	1	130.33
03/05/21	MILEAGE CHARGE	1128391	12.79	33.13
03/05/21	DISPCAL ROLL	1128391	10	32.10
03/05/21	20YD TEMP HAUL	1128392	12.79	681.20
03/05/21	PLP Superfund Cleanup Sur	1128392	1	130.33
03/05/21	MILEAGE CHARGE	1128392	11.58	29.99
03/05/21	DISPCAL ROLL	1128392	10	32.10
03/05/21	20YD TEMP HAUL	1128393	11.58	616.75
03/05/21	PLP Superfund Cleanup Sur	1128393	1	130.33
03/05/21	MILEAGE CHARGE	1128393	10.1	26.16
03/05/21	DISPCAL ROLL	1128393	10	32.10
03/05/21	20YD TEMP HAUL	1128394	10.1	537.93
03/05/21	PLP Superfund Cleanup Sur	1128394	1	130.33
03/05/21	MILEAGE CHARGE	1128394	6.07	15.72
03/05/21	DISPCAL ROLL	1128394	10	32.10
03/05/21	20YD DROP BOX HAUL	1130701	6.07	323.29
03/05/21	PLP Superfund Cleanup Sur	1130701	1	110.28
03/05/21	MILEAGE CHARGE	1130701	7.7	19.94
03/05/21	DISPCAL ROLL	1130701	10	32.10
03/06/21	20YD TEMP HAUL	1128411	7.7	410.10
03/06/21	PLP Superfund Cleanup Sur	1128411	1	130.33
03/06/21	MILEAGE CHARGE	1128411	9.79	25.36
03/06/21	DISPCAL ROLL	1128411	10	32.10
03/06/21	20YD TEMP HAUL	1128412	9.79	521.42
03/06/21	PLP Superfund Cleanup Sur	1128412	1	130.33