

DATE PREPARED: November 4, 2022 DOCKET: TG-220243-220215 REQUESTER: Basin Disposal, Inc.	WITNESS: Brian Wilhelm Skyler Rachford Kurt Thorne Responder: Packaging Corporation of America
--	--

DATA REQUEST NO. 9:

Produce every Communication or record of any kind which demonstrates that PCA requested that Basin Disposal provide a service to collect piles of OCC Rejects from PCA.

RESPONSE:

PCA requested that BDI provide services to collect and haul the OCC Rejects from PCA.

PCA refers BDI to the documents provided by PCA in response to BDI's Data Request 1. For additional documents responsive to this Data Request, please see the PDF titled "PCA Responsive Documents to DR 3."

PCA reserves the right to supplement or amend its response.

From: Thorne, Kurt [/O=EXCHANGELABS/OU=EXCHANGE ADMINISTRATIVE GROUP (FYDIBOHF23SPDLT)/CN=RECIPIENTS/CN=1708B864AA054CBF83C17247975D2BED-KURTTHORNE]
Sent: 12/21/2021 8:44:21 PM
To: Richard Dietrich [richardd@basindisposal.com]
CC: Markland, Kasey [/o=ExchangeLabs/ou=Exchange Administrative Group (FYDIBOHF23SPDLT)/cn=Recipients/cn=f878e694df554c90804ec955a0249dc6-KaseyMarkla]; Cova, Paul [/o=ExchangeLabs/ou=Exchange Administrative Group (FYDIBOHF23SPDLT)/cn=Recipients/cn=0902773e33d14122be71e2bb30919417-PaulCova]; Wilhelm, Brian [/o=ExchangeLabs/ou=Exchange Administrative Group (FYDIBOHF23SPDLT)/cn=Recipients/cn=ddfb4d95f3d74a0da9547ffea9e1c7e4-BrianWilhel]
Subject: OCC Rejects

Richard,

If my memory serves me right, you mentioned that BDI would be able to haul PCA OCC rejects in a similar manner as Jammies (big truck straight to the landfill). Could you give us a quote for this type of service and BDI handling all of our rejects. I am guessing you will have questions – please direct them to Kasey Markland, she is copied on this email.

Thank you.

Kurt

Kurt Thorne
Mill Manager
PCA, Wallula

From: Holm, Sam [/O=PACKAGINGCORP/OU=EXCHANGE ADMINISTRATIVE GROUP (FYDIBOHF23SPDLT)/CN=RECIPIENTS/CN=E53D662511A94BD591EEA1F8D5DE3110-HOLM, SAM]
Sent: 2/5/2021 6:45:04 PM
To: Charlie Dietrich [charlied@basindisposal.com]; Kris May [kris@basindisposal.com]
CC: Rachford, Skyler [/o=PackagingCorp/ou=Exchange Administrative Group (FYDIBOHF23SPDLT)/cn=Recipients/cn=6784500e517c498eb9db9cee3fb99590-Rachford,]
Subject: FW: OCC BDI Rejects Dumpsters

Hi Charlie and Kris,
Got the word about container delivery.
Please review the below. Would like to start getting the containers on February 10th.

Skyler Rachford will be your point of contact to position the containers and what not. His contact info is at the bottom of the email.

Thanks.

Samuel Holm
C# 509-627-9155

From: Rachford, Skyler <SkylerRachford@packagingcorp.com>
Sent: Friday, February 5, 2021 10:42 AM
To: Davis, Nick <NickDavis@packagingcorp.com>; Holm, Sam <SamHolm@packagingcorp.com>; Schreiber, Jack <JSchreiber@packagingcorp.com>; Castillo, Jesus <JesusCastillo@packagingcorp.com>; Jackson, Traylor <TraylorJackson@packagingcorp.com>; Tobin, David <DavidTobin@packagingcorp.com>; Galloway, Michael <MichaelGalloway@packagingcorp.com>; Fischer, Hector <HFischer@packagingcorp.com>; Mathis, Richie <RMathis@packagingcorp.com>; Gunter, Johnny <JohnnyGunter@packagingcorp.com>; Thorne, Kurt <KurtThorne@packagingcorp.com>
Cc: Markland, Kasey <KaseyMarkland@packagingcorp.com>; Thorne, Heather <HeatherThorne@packagingcorp.com>
Subject: OCC BDI Rejects Dumpsters

All,

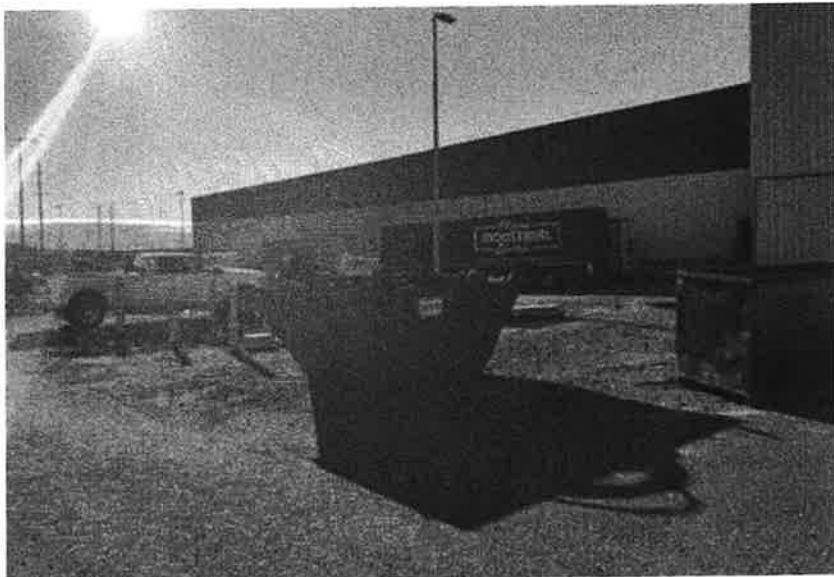
I would like to start receiving the BDI dumpsters next week so we have enough on-site for start-up on the 21st.

Sam: Lets have BDI start bring dumpsters on-site starting Wednesday 2/10/21 and have them stage the dumpsters in the areas shown in the first 3 pictures below.

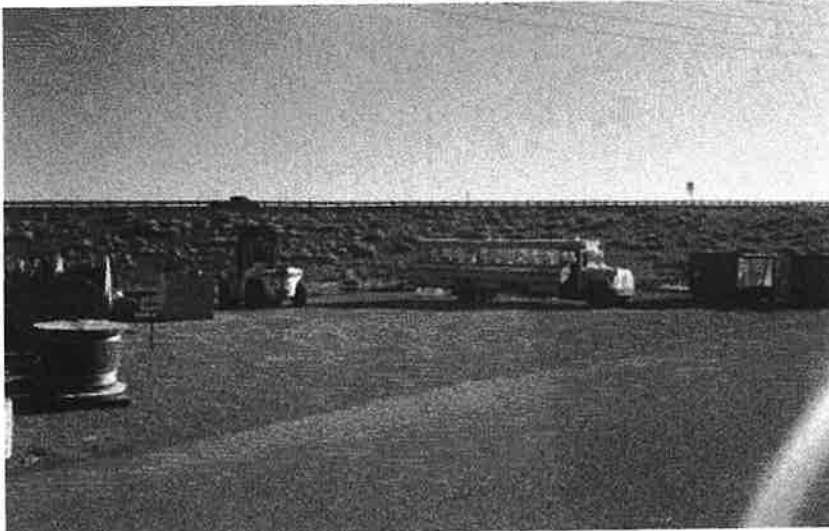
I need these areas cleared around the OCC site so the dumpsters can be staged:



This pad needs to be cleared ASAP. This will be the primary staging location for the BDI dumpsters. We will need to find an alternate storage location for the transformers.



Clear by 2/10/21



Clear by 2/10/21



Olsson's area will need to be cleared eventually. They are still actively working in the plant so we will find alternate staging areas for dumpsters until this area is clear.

Thank you,

Skyler Rachford

Assistant Supt. – OCC & Recycled Fiber

Office: Ext. 3327

Cell: (509) 316-1354

SkylerRachford@packagingcorp.com



Wallula, WA

From: Kris May [kris@basindisposal.com]
Sent: 2/18/2021 12:47:16 AM
To: Rachford, Skyler [/o=PackagingCorp/ou=Exchange Administrative Group
(FYDIBOHF23SPDLT)/cn=Recipients/cn=6784500e517c498eb9db9cee3fb99590-Rachford,]
CC: Charlie Dietrich [charlied@basindisposal.com]
Subject: [EXTERNAL] CONTAINER DELIVERIES

Skylar,

Per our phone conversation, I have 2 open top 20yd containers scheduled for delivery for tomorrow. This will give you a total of 7 of the 20yd containers for your March 1st start date. Once we get a couple of hauls going we will have a better idea of the weight of the loads and at that time will have more containers in our inventory to send your way as needed.

Please let us know if you have any questions and have a great evening!

Thank you,

Kris May

509-544-7706 direct line

509-547-2476 office

509-547-8617 fax

BASIN
disposal

PO Box 3850

Pasco, WA 99302-3850

From: Kris May [kris@basindisposal.com]
Sent: 2/25/2021 4:42:08 PM
To: Rachford, Skyler [/o=PackagingCorp/ou=Exchange Administrative Group (FYDIBOHF23SPDLT)/cn=Recipients/cn=6784500e517c498eb9db9cee3fb99590-Rachford,]
CC: Markland, Kasey [/o=PackagingCorp/ou=Exchange Administrative Group (FYDIBOHF23SPDLT)/cn=Recipients/cn=55bb92fcce1a4f0d9abc5ec11ebc38da-Markland,]
Subject: [EXTERNAL] RE: OCC Plant Dumpsters

Skylar,

Good morning! We are bringing some containers from our other location today and will be delivering another 7 – 20yd containers tomorrow. Will you be available to show where to place?

This will give you a total of 14 – 20yd containers for the 3/1/2021 start date.

Thank you,

Kris May

509-544-7706 direct line
509-547-2476 office
509-547-8617 fax

BASIN
disposal

PO Box 3850
Pasco, WA 99302-3850

From: Rachford, Skyler <SkylerRachford@packagingcorp.com>
Sent: Monday, February 22, 2021 11:40 AM
To: Kris May <kris@basindisposal.com>
Cc: Markland, Kasey <KaseyMarkland@packagingcorp.com>
Subject: OCC Plant Dumpsters

Kris,

Can we get another delivery set-up for dumpsters at the OCC Plant?

I would like to have 17 dumpsters on site before our Plant Start-Up on March 1st. We currently have 7 that have been delivered, so will need 10 more delivered to be allocated for process rejects. If you do not have any 20 yd dumpsters available, 30 yd will be acceptable.

Thanks,

Skyler Rachford
Assistant Supt. – OCC & Recycled Fiber
Office: Ext. 3327
Cell: (509) 316-1354

SkylerRachford@packagingcorp.com



From: Holm, Sam [/O=PACKAGINGCORP/OU=EXCHANGE ADMINISTRATIVE GROUP (FYDIBOHF23SPDLT)/CN=RECIPIENTS/CN=E53D662511A94BD591EEA1F8D5DE3110-HOLM, SAM]
Sent: 3/3/2021 6:48:27 PM
To: Kris May [kris@basindisposal.com]; Charlie Dietrich [charlied@basindisposal.com]
CC: Markland, Kasey [/o=PackagingCorp/ou=Exchange Administrative Group (FYDIBOHF23SPDLT)/cn=Recipients/cn=55bb92fcce1a4f0d9abc5ec11ebc38da-Markland,]; Rachford, Skyler [/o=PackagingCorp/ou=Exchange Administrative Group (FYDIBOHF23SPDLT)/cn=Recipients/cn=6784500e517c498eb9db9cee3fb99590-Rachford,]
Subject: dumpsters hauling

Charlie / Kris

Wanted to let you know that Kasey has communicated they are filling dumpsters so I would like for BDI to start making runs to haul the filled dumpsters. As you recall during our conversations, we expect to be filling anywhere from 6 – 8 dumpsters per day so we need you guys to remove those and bring empties. Now would be a good time to start that process.

Let me know your thinking and when we can expect to start seeing a flow of dumpsters.

Thanks.

Samuel Holm
C# 509-627-9155

From: Holm, Sam [/O=PACKAGINGCORP/OU=EXCHANGE ADMINISTRATIVE GROUP (FYDIBOHF23SPDLT)/CN=RECIPIENTS/CN=E53D662511A94BD591EEA1F8D5DE3110-HOLM, SAM]
Sent: 3/4/2021 10:02:44 PM
To: Markland, Kasey [/o=PackagingCorp/ou=Exchange Administrative Group (FYDIBOHF23SPDLT)/cn=Recipients/cn=55bb92fcce1a4f0d9abc5ec11ebc38da-Markland,]; Rachford, Skyler [/o=PackagingCorp/ou=Exchange Administrative Group (FYDIBOHF23SPDLT)/cn=Recipients/cn=6784500e517c498eb9db9cee3fb99590-Rachford,]
CC: Lockard, Mitch [/o=PackagingCorp/ou=Exchange Administrative Group (FYDIBOHF23SPDLT)/cn=Recipients/cn=908c135c47ec427ead33069100203bde-Lockard, M]
Subject: FW: PCA Wallula

Kasey

We need to talk. Please call me when you have a moment.

Samuel Holm
C# 509-627-9155

From: Charlie Dietrich <charlied@basindisposal.com>
Sent: Thursday, March 4, 2021 1:52 PM
To: Holm, Sam <SamHolm@packagingcorp.com>; Kris May <kris@basindisposal.com>
Cc: Andy Foxx <andyf@basindisposal.com>
Subject: [EXTERNAL] RE: PCA Wallula

Hi Sam,

Just to keep you in the loop, we pulled three trucks off of route to accommodate the extra hauls. However, when they arrived only 4 of the 14 containers were full.

I think it would be helpful to get my Route Manager and Dispatch connected with a specific contact on site so that the information does not have to flow through too many channels. We attempted to reach out to Skyler but did not receive any call back.

Thanks,
Charlie

From: Holm, Sam <SamHolm@packagingcorp.com>
Sent: Thursday, March 4, 2021 9:51 AM
To: Charlie Dietrich <charlied@basindisposal.com>; Kris May <kris@basindisposal.com>
Cc: Andy Foxx <andyf@basindisposal.com>
Subject: RE: PCA Wallula

Thanks Charlie.

Samuel Holm
C# 509-627-9155

From: Charlie Dietrich <charlied@basindisposal.com>
Sent: Thursday, March 4, 2021 9:50 AM
To: Holm, Sam <SamHolm@packagingcorp.com>; Kris May <kris@basindisposal.com>
Cc: Andy Foxx <andyf@basindisposal.com>
Subject: [EXTERNAL] RE: PCA Wallula

Sam,

We are working to send people your way. Kris will be reaching out soon to let you know the plan and to talk through this increase in production.

Thanks,
Charlie

From: Holm, Sam <SamHolm@packagingcorp.com>
Sent: Thursday, March 4, 2021 9:24 AM
To: Charlie Dietrich <charlied@basindisposal.com>; Kris May <kris@basindisposal.com>
Subject: PCA Wallula

Charlie / Kris
Our Dumpsters are all full; we need your service to start pulling and replacing immediately.

Please give me a call so we can talk this through.

Thaks.

Samuel Holm
C# 509-627-9155

Paul,

I apologize for the delay, Monday is a very hectic day. I have listed the pricing below:

Delivery	\$56.50
20yd Haul	\$110.00
Weight	\$51.96 per ton
Mileage	\$3.20 per mile after 5 miles

The pricing is per each container. Please let me know if you have any questions.

Thank you,

Kris May

509-544-7706 direct line
509-547-2476 office
509-547-8617 fax

BASIN
disposal

PO Box 3850
Pasco, WA 99302-3850

From: Gibson, Paul [<mailto:PaulGibson@packagingcorp.com>]
Sent: Monday, December 7, 2020 1:06 PM
To: Kris May <kris@basindisposal.com>
Subject: Quote for services in 2021

Kris:

Can you provide me a quote for services. These are required for all our PO's now. Something that designates pricing would suffice.

Thanks,

Paul Gibson
Environmental Specialist
31831 W Hwy 12
Wallula, WA 99363
Office: 509-546-3421
Cell: 509-987-7641

From: Gibson, Paul [/O=PACKAGINGCORP/OU=EXCHANGE ADMINISTRATIVE GROUP (FYDIBOHF23SPDLT)/CN=RECIPIENTS/CN=AB065D15D0E1488AB2AC54157B4ACCBE-GIBSON, PA]
Sent: 12/14/2020 10:18:09 PM
To: Rachford, Skyler [/o=PackagingCorp/ou=Exchange Administrative Group (FYDIBOHF23SPDLT)/cn=Recipients/cn=6784500e517c498eb9db9cee3fb99590-Rachford,]
Subject: FW: Quote for services in 2021

Here is quote with contact information.

Paul Gibson

Environmental Specialist
31831 W Hwy 12
Wallula, WA 99363
Office: 509-546-3421
Cell: 509-987-7641

From: Kris May <kris@basindisposal.com>
Sent: Monday, December 7, 2020 5:26 PM
To: Gibson, Paul <PaulGibson@packagingcorp.com>
Subject: [EXTERNAL] RE: Quote for services in 2021

Paul,

I apologize for the delay, Monday is a very hectic day. I have listed the pricing below:

Delivery	\$56.50
20yd Haul	\$110.00
Weight	\$51.96 per ton
Mileage	\$3.20 per mile after 5 miles

The pricing is per each container. Please let me know if you have any questions.

Thank you,

Kris May

509-544-7706 direct line
509-547-2476 office
509-547-8617 fax

BASIN
disposal

PO Box 3850
Pasco, WA 99302-3850

From: Gibson, Paul [<mailto:PaulGibson@packagingcorp.com>]
Sent: Monday, December 7, 2020 1:06 PM
To: Kris May <kris@basindisposal.com>
Subject: Quote for services in 2021

Kris:

Can you provide me a quote for services. These are required for all our PO's now. Something that designates pricing would suffice.

Thanks,

Paul Gibson

Environmental Specialist

31831 W Hwy 12

Wallula, WA 99363

Office: 509-546-3421

Cell: 509-987-7641

From: Kris May [kris@basindisposal.com]
Sent: 12/15/2020 10:37:49 PM
To: Rachford, Skyler [/o=PackagingCorp/ou=Exchange Administrative Group (FYDIBOHF23SPDLT)/cn=Recipients/cn=6784500e517c498eb9db9cee3fb99590-Rachford,]
CC: Markland, Kasey [/o=PackagingCorp/ou=Exchange Administrative Group (FYDIBOHF23SPDLT)/cn=Recipients/cn=55bb92fcce1a4f0d9abc5ec11ebc38da-Markland,]; Davis, Nick [/o=PackagingCorp/ou=Exchange Administrative Group (FYDIBOHF23SPDLT)/cn=Recipients/cn=59548d657bce4e2c93fac583ac2f53a-Davis, Nic]; Gibson, Paul [/o=PackagingCorp/ou=Exchange Administrative Group (FYDIBOHF23SPDLT)/cn=Recipients/cn=ab065d15d0e1488ab2ac54157b4accbe-Gibson, Pa]; Charlie Dietrich [charlied@basindisposal.com]; Jasen Markee [jasenm@basindisposal.com]
Subject: [EXTERNAL] RE: BDI Dumpster Capacity

Skyler,

I have answered your questions below in red, I hope this helps. Please let us know if you have further questions. Have a great day!

Thank you,

Kris May

509-544-7706 direct line

509-547-2476 office

509-547-8617 fax

BASIN
disposal

PO Box 3850

Pasco, WA 99302-3850

From: Rachford, Skyler [mailto:SkylerRachford@packagingcorp.com]
Sent: Monday, December 14, 2020 2:11 PM
To: Kris May <kris@basindisposal.com>
Cc: Markland, Kasey <KaseyMarkland@packagingcorp.com>; Davis, Nick <NickDavis@packagingcorp.com>; Gibson, Paul <PaulGibson@packagingcorp.com>
Subject: BDI Dumpster Capacity

Kris,

I had a couple questions about the dumpster load capacity for our OCC Plant:

1. Does the 10 ton load capacity include the weight of the dumpster, or had this been compensated for already and we can put up to 10 tons of waste into the dumpster? The 10 ton load capacity is what our trucks can carry, so it does include the weight of the dumpster.
2. The special dumpster for the seabright press is a structurally reinforced, enclosed, 35 yd dumpster. BDI has installed their custom undercarriage so they can be hauled on your trucks. These dumpsters weigh close to 6 tons. Does this mean that we can only put 4 tons into these dumpsters for them to get hauled? That is correct, it would have to be 10 ton, subtract the weight of the dumpster = weight of waste we can haul.
3. How much do the 20 and 30 yd dumpsters weigh? The dumpsters we provide weigh less than 1 ton.

Thanks,

Skyler Rachford

Assistant Supt. – OCC & Recycled Fiber

Office: Ext. 3327

Cell: (509) 316-1354

SkylerRachford@packagingcorp.com



Walla Walla, WA

From: Kris May [kris@basindisposal.com]
Sent: 12/30/2020 7:42:18 PM
To: Holm, Sam [/o=PackagingCorp/ou=Exchange Administrative Group (FYDIBOHF23SPDLT)/cn=Recipients/cn=e53d662511a94bd591eea1f8d5de3110-Holm, Sam]; Charlie Dietrich [charlied@basindisposal.com]
CC: Rachford, Skyler [/o=PackagingCorp/ou=Exchange Administrative Group (FYDIBOHF23SPDLT)/cn=Recipients/cn=6784500e517c498eb9db9cee3fb99590-Rachford,]
Subject: [EXTERNAL] RE: OCC BDI Dumpster Locations

Sam and Skyler,

I now have the pricing for 2021 for the 20yd containers. They are minimal changes on the prices but I wanted to make sure you had accurate information.

Delivery	\$56.64
20yd Haul	\$110.28
Tip Fee	\$53.26 per ton
Mileage	\$3.21 per mile

Thank you,

Kris May

509-544-7706 direct line

509-547-2476 office

509-547-8617 fax

BASIN
disposal

PO Box 3850
Pasco, WA 99302-3850

From: Holm, Sam <SamHolm@packagingcorp.com>
Sent: Wednesday, December 30, 2020 11:36 AM
To: Charlie Dietrich <charlied@basindisposal.com>; Kris May <kris@basindisposal.com>
Subject: FW: OCC BDI Dumpster Locations

Charlie and Kris
Attached is the birds eye view of the OCC plant and below are some comments from Skyler on process.

Samuel Holm
C# 509-627-9155

From: Rachford, Skyler <SkylerRachford@packagingcorp.com>
Sent: Tuesday, December 29, 2020 5:02 PM

To: Holm, Sam <SamHolm@packagingcorp.com>
Cc: Markland, Kasey <KaseyMarkland@packagingcorp.com>
Subject: OCC BDI Dumpster Locations

Sam,

Attached is the locations for the BDI dumpsters and traffic flow for their trucks at OCC. I put down that their trucks can enter through either gate 1 or 3.

Thanks,

Skyler Rachford

Assistant Supt. – OCC & Recycled Fiber

Office: Ext. 3327

Cell: (509) 316-1354

SkylerRachford@packagingcorp.com



Wallula, WA

From: DoNotReply@packagingcorp.com <DoNotReply@packagingcorp.com>

Sent: Tuesday, December 29, 2020 4:59 PM

To: Rachford, Skyler <SkylerRachford@packagingcorp.com>

Subject: Scan from Wallula STS Building

From: Gibson, Paul [/O=PACKAGINGCORP/OU=EXCHANGE ADMINISTRATIVE GROUP (FYDIBOHF23SPDLT)/CN=RECIPIENTS/CN=AB065D15D0E1488AB2AC54157B4ACCBE-GIBSON, PA]
Sent: 12/7/2020 9:00:24 PM
To: Butkus, Paul [/o=PackagingCorp/ou=Exchange Administrative Group (FYDIBOHF23SPDLT)/cn=Recipients/cn=34f438ff2ff749cb9657ed5baeef4bd1-Butkus, Pa]; Rachford, Skyler [/o=PackagingCorp/ou=Exchange Administrative Group (FYDIBOHF23SPDLT)/cn=Recipients/cn=6784500e517c498eb9db9cee3fb99590-Rachford,]; Kris May [kris@basindisposal.com]; Gibson, Paul [/o=PackagingCorp/ou=Exchange Administrative Group (FYDIBOHF23SPDLT)/cn=Recipients/cn=ab065d15d0e1488ab2ac54157b4accbe-Gibson, Pa]
Subject: Waste disposal options for new OCC plant
Location: Microsoft Teams Meeting
Start: 12/9/2020 6:00:00 PM
End: 12/9/2020 7:00:00 PM
Show Time As: Tentative

Required Attendees: Butkus, Paul; Rachford, Skyler; Kris May; Gibson, Paul

Skyler:

Here is the meeting invite to discuss waste options with BDI. Please invite other individuals you think might be interested in this discussion.

Paul

Microsoft Teams meeting

Join on your computer or mobile app

[Click here to join the meeting](#)

Join with a video conferencing device

[378877287@t.plcm.vc](tel:378877287)

Video Conference ID: 116 099 321 0

[Alternate VTC dialing instructions](#)

[Learn More](#) | [Meeting options](#)

From: Rachford, Skyler [/O=EXCHANGELABS/OU=EXCHANGE ADMINISTRATIVE GROUP (FYDIBOHF23SPDLT)/CN=RECIPIENTS/CN=05D507E8C42D4BB28AC5E555803F2560-SKYLERRACHF]
Sent: 10/25/2021 5:33:13 PM
To: Kasey Markland (KaseyMarkland@packagingcorp.com) [KaseyMarkland@packagingcorp.com]; Cova, Paul [/o=ExchangeLabs/ou=Exchange Administrative Group (FYDIBOHF23SPDLT)/cn=Recipients/cn=0902773e33d14122be71e2bb30919417-PaulCova]; Brian Wilhelm (BrianWilhelm@packagingcorp.com) [BrianWilhelm@packagingcorp.com]; Kurt Thorne (KurtThorne@packagingcorp.com) [KurtThorne@packagingcorp.com]
Subject: FW: OCC

FYI. Got this email last Friday.

Skyler Rachford

Assistant Supt. – OCC & Recycled Fiber

Office: Ext. 3327

Cell: (509) 316-1354

SkylerRachford@packagingcorp.com



Wallula, WA

From: Charlie Dietrich <charlied@basindisposal.com>
Sent: Friday, October 22, 2021 5:56 AM
To: Rachford, Skyler <SkylerRachford@packagingcorp.com>
Subject: [EXTERNAL] OCC

Hi Skyler,

Maybe you can help me out:

- A while back it was discussed and requested (by PCA) to start using the compactor to haul the OCC rejects. The details for a quick set-up would be:
 - The compactor will require 24/7 service, this will take time to procure equipment, labor, and discussions with the transfer station. However, we can start hauling the compactor during regular operating hours. These hours would start around 6:00a and end around 9:00p.
 - With the weight of the compactor, for the time being, we will make up for the lighter loads by increasing the frequency that we will haul the container. I anticipate a haul every 3 hours. This would put the hauls for the day around 5.
 - Fifteen hours of work would mean the compactor would contain around 24 tons of material. The remaining 45-55 tons would then be put into the drop boxes under the current system.
- The alternative to the drop boxes would be using a semi and belt trailer to go straight to the Landfill.

Currently I am aware of the diversion of material from our DropBoxes to the Jammie's environmental, whom is illegally hauling the waste to the landfill. As a partnership we need to resolve this as quickly as possible.

Any help in the matter you can provide would be appreciated.

Thanks,

Charlie Dietrich

*PO Box 3850
Pasco, WA 99302-3850*

*Ph. 509-542-4959
Cell 360-635-8995
Fax 509-547-8617*

BASIN
disposal

From: Rachford, Skyler [/O=PACKAGINGCORP/OU=EXCHANGE ADMINISTRATIVE GROUP (FYDIBOHF23SPDLT)/CN=RECIPIENTS/CN=6784500E517C498EB9DB9CEE3FB99590-RACHFORD,]
Sent: 2/22/2021 7:39:42 PM
To: Kris May [kris@basindisposal.com]
CC: Markland, Kasey [/o=BoisePaper/ou=Exchange Administrative Group (FYDIBOHF23SPDLT)/cn=Recipients/cn=b5ff64f5af9147e8b020614da2bdcee3-Markland, Kas]
Subject: OCC Plant Dumpsters

Kris,

Can we get another delivery set-up for dumpsters at the OCC Plant?

I would like to have 17 dumpsters on site before our Plant Start-Up on March 1st. We currently have 7 that have been delivered, so will need 10 more delivered to be allocated for process rejects. If you do not have any 20 yd dumpsters available, 30 yd will be acceptable.

Thanks,

Skyler Rachford

Assistant Supt. – OCC & Recycled Fiber

Office: Ext. 3327

Cell: (509) 316-1354

SkylerRachford@packagingcorp.com



Wallula, WA

From: Rachford, Skyler [/O=PACKAGINGCORP/OU=EXCHANGE ADMINISTRATIVE GROUP (FYDIBOHF23SPDLT)/CN=RECIPIENTS/CN=6784500E517C498EB9DB9CEE3FB99590-RACHFORD,]
Sent: 2/26/2021 3:09:27 PM
To: Kris May [kris@basindisposal.com]
CC: Markland, Kasey [/o=PackagingCorp/ou=Exchange Administrative Group (FYDIBOHF23SPDLT)/cn=Recipients/cn=55bb92fcce1a4f0d9abc5ec11ebc38da-Markland,]
Subject: RE: [EXTERNAL] RE: OCC Plant Dumpsters

Hi Kris,

Yes! I will show the driver where to place.

Thanks!

Sent from my Verizon, Samsung Galaxy smartphone

----- Original message -----

From: Kris May <kris@basindisposal.com>
Date: 2/25/21 8:42 AM (GMT-08:00)
To: "Rachford, Skyler" <SkylerRachford@packagingcorp.com>
Cc: "Markland, Kasey" <KaseyMarkland@packagingcorp.com>
Subject: [EXTERNAL] RE: OCC Plant Dumpsters

Skylar,

Good morning! We are bringing some containers from our other location today and will be delivering another 7 – 20yd containers tomorrow. Will you be available to show where to place?

This will give you a total of 14 – 20yd containers for the 3/1/2021 start date.

Thank you,

Kris May

509-544-7706 direct line
509-547-2476 office
509-547-8617 fax

BASIN
disposal

PO Box 3850
Pasco, WA 99302-3850

From: Rachford, Skyler <SkylerRachford@packagingcorp.com>
Sent: Monday, February 22, 2021 11:40 AM
To: Kris May <kris@basindisposal.com>
Cc: Markland, Kasey <KaseyMarkland@packagingcorp.com>
Subject: OCC Plant Dumpsters

Kris,

Can we get another delivery set-up for dumpsters at the OCC Plant?

I would like to have 17 dumpsters on site before our Plant Start-Up on March 1st. We currently have 7 that have been delivered, so will need 10 more delivered to be allocated for process rejects. If you do not have any 20 yd dumpsters available, 30 yd will be acceptable.

Thanks,

Skyler Rachford
Assistant Supt. – OCC & Recycled Fiber
Office: Ext. 3327
Cell: (509) 316-1354
SkylerRachford@packagingcorp.com



Wallula, WA

From: Rachford, Skyler [/O=PACKAGINGCORP/OU=EXCHANGE ADMINISTRATIVE GROUP (FYDIBOHF23SPDLT)/CN=RECIPIENTS/CN=6784500E517C498EB9DB9CEE3FB99590-RACHFORD,]
Sent: 7/14/2021 9:05:22 PM
To: Kurt Thorne (KurtThorne@packagingcorp.com) [/o=PackagingCorp/ou=Exchange Administrative Group (FYDIBOHF23SPDLT)/cn=Recipients/cn=63a0fe866d634b9eb2c1c186aab09c38-Thorne, Ku]; Brian Wilhelm (BrianWilhelm@packagingcorp.com) [/o=PackagingCorp/ou=Exchange Administrative Group (FYDIBOHF23SPDLT)/cn=Recipients/cn=a4026b7f7c424e80a477fe21a993aa85-Wilhelm, B]; Cova, Paul [/o=PackagingCorp/ou=Exchange Administrative Group (FYDIBOHF23SPDLT)/cn=Recipients/cn=626490df27bf4a98b614c4ec6e8eca1a-PAC051016]; Kasey Markland (KaseyMarkland@packagingcorp.com) [/o=PackagingCorp/ou=Exchange Administrative Group (FYDIBOHF23SPDLT)/cn=Recipients/cn=55bb92fccc1a4f0d9abc5ec11ebc38da-Markland,]; Charlie Dietrich [charlied@basindisposal.com]; Castillo, Jesus [/o=PackagingCorp/ou=Exchange Administrative Group (FYDIBOHF23SPDLT)/cn=Recipients/cn=416871999f3343828abc798648ca1272-Castillo,]

Subject: OCC Rejects Hauling Plans

Location: Meet by BDI Dumpsters

Start: 7/19/2021 5:00:00 PM

End: 7/19/2021 6:00:00 PM

Show Time As: Tentative

Required Attendees: Kurt Thorne (KurtThorne@packagingcorp.com); Brian Wilhelm (BrianWilhelm@packagingcorp.com); Cova, Paul; Kasey Markland (KaseyMarkland@packagingcorp.com); Charlie Dietrich; Castillo, Jesus

Meeting to discuss BDI's proposal for hauling rejects from the OCC Plant.

From: Rachford, Skyler [/O=PACKAGINGCORP/OU=EXCHANGE ADMINISTRATIVE GROUP (FYDIBOHF23SPDLT)/CN=RECIPIENTS/CN=6784500E517C498EB9DB9CEE3FB99590-RACHFORD,]
Sent: 7/20/2021 4:25:28 PM
To: Charlie Dietrich [charlied@basindisposal.com]
Subject: RE: Weights

Sebright roll off box was 65% full after 6.17 hours. We were running slightly lower rates during this time so normally this box would fill up slightly faster. I'd say 5 hours would be a good change out frequency to start with.

9.74 tons of rejects were in the roll off box when weighed. Roll off box is 5.6 tons empty so total load was 15.3 tons. I'm guessing if we filled up the box all the way we'd get around 15 tons of rejects into it for a total load of about 20 tons.

Skyler Rachford

Assistant Supt. – OCC & Recycled Fiber

Office: Ext. 3327

Cell: (509) 316-1354

SkylerRachford@packagingcorp.com



Wallula, WA

From: Charlie Dietrich <charlied@basindisposal.com>
Sent: Tuesday, July 20, 2021 5:58 AM
To: Rachford, Skyler <SkylerRachford@packagingcorp.com>
Subject: [EXTERNAL] Weights

Hi Skyler,

Thanks again for allowing to meet with you and your team.

Would I be able to get the weights that we gathered doing the test on Friday with the compactor boxes?

Thanks,

Charlie Dietrich

*PO Box 3850
Pasco, WA 99302-3850*

*Ph. 509-542-4959
Cell 360-635-8995
Fax 509-547-8617*



From: Gibson, Paul [PaulGibson@packagingcorp.com]
Sent: 12/10/2020 2:42:10 AM
To: Kris May [kris@basindisposal.com]; Tobin, David [/o=ExchangeLabs/ou=Exchange Administrative Group (FYDIBOHF23SPDLT)/cn=Recipients/cn=2844e17d08594766bb8228dedb2b8152-DavidTobin]; Rachford, Skyler [/o=ExchangeLabs/ou=Exchange Administrative Group (FYDIBOHF23SPDLT)/cn=Recipients/cn=05d507e8c42d4bb28ac5e555803f2560-SkylerRachf]; Butkus, Paul [/o=ExchangeLabs/ou=Exchange Administrative Group (FYDIBOHF23SPDLT)/cn=Recipients/cn=15871d5cc5bd48af89bbd94b78c06552-PaulButkus]; Thorne, Heather [/o=ExchangeLabs/ou=Exchange Administrative Group (FYDIBOHF23SPDLT)/cn=Recipients/cn=59a65166544b44389dc9ab6c9b5ed925-HeatherThor]; Gibson, Paul [/o=ExchangeLabs/ou=Exchange Administrative Group (FYDIBOHF23SPDLT)/cn=Recipients/cn=049b2c61e071481b8c8995eaf67aae3e-PaulGibson]; Application b1902c3e-b9f7-4650-9b23-5772bd429747

Subject: Meeting (ScheduledMeeting)/Thread Id:
 19:meeting_YjczOWM0ODktZTdjMi00MGM2LWFhZTltMGUzYTE4ZDgwZjBi@thread.v2/Communication Id:
 22eef261-bd48-4fa3-9d6c-44170cdeec2b/Kris May,Tobin, David,Rachford, Skyler,Butkus, Paul,Thorne,
 Heather,Gibson, Paul

Start: 12/9/2020 4:51:43 PM

End: 12/9/2020 6:32:14 PM

Show Time As: Busy

Recurrence: (none)

Required Attendees: Kris May; Tobin, David; Rachford, Skyler; Butkus, Paul; Thorne, Heather; Gibson, Paul; Application b1902c3e-b9f7-4650-9b23-5772bd429747

Start Time (UTC): 12/9/2020 4:51:43 PM

End Time (UTC): 12/9/2020 6:32:14 PM

Duration: 01:40:31.0160684

[12/9/2020 6:04:56 PM (UTC)] kris@basindisposal.com joined.
 [12/9/2020 6:31:56 PM (UTC)] kris@basindisposal.com left.
 [12/9/2020 5:58:06 PM (UTC)] DavidTobin@packagingcorp.com joined.
 [12/9/2020 6:31:56 PM (UTC)] DavidTobin@packagingcorp.com left.
 [12/9/2020 5:57:33 PM (UTC)] SkylerRachford@packagingcorp.com joined.
 [12/9/2020 6:32:04 PM (UTC)] SkylerRachford@packagingcorp.com left.
 [12/9/2020 5:55:54 PM (UTC)] PaulButkus@packagingcorp.com joined.
 [12/9/2020 6:32:11 PM (UTC)] PaulButkus@packagingcorp.com left.
 [12/9/2020 5:58:48 PM (UTC)] HeatherThorne@packagingcorp.com joined.
 [12/9/2020 6:32:12 PM (UTC)] HeatherThorne@packagingcorp.com left.
 [12/9/2020 4:51:43 PM (UTC)] PaulGibson@packagingcorp.com joined.
 [12/9/2020 6:32:14 PM (UTC)] PaulGibson@packagingcorp.com left.
 [12/9/2020 6:06:59 PM (UTC)] Application b1902c3e-b9f7-4650-9b23-5772bd429747 joined.
 [12/9/2020 6:32:14 PM (UTC)] Application b1902c3e-b9f7-4650-9b23-5772bd429747 left.

From: Rachford, Skyler [/O=PACKAGINGCORP/OU=EXCHANGE ADMINISTRATIVE GROUP (FYDIBOHF23SPDLT)/CN=RECIPIENTS/CN=6784500E517C498EB9DB9CEE3FB99590-RACHFORD,]
Sent: 7/14/2021 9:05:20 PM
To: Rachford, Skyler [/o=PackagingCorp/ou=Exchange Administrative Group (FYDIBOHF23SPDLT)/cn=Recipients/cn=6784500e517c498eb9db9cee3fb99590-Rachford,]; Kurt Thorne (KurtThorne@packagingcorp.com) [/o=PackagingCorp/ou=Exchange Administrative Group (FYDIBOHF23SPDLT)/cn=Recipients/cn=63a0fe866d634b9eb2c1c186aab09c38-Thorne, Ku]; Brian Wilhelm (BrianWilhelm@packagingcorp.com) [/o=PackagingCorp/ou=Exchange Administrative Group (FYDIBOHF23SPDLT)/cn=Recipients/cn=a4026b7f7c424e80a477fe21a993aa85-Wilhelm, B]; Cova, Paul [/o=PackagingCorp/ou=Exchange Administrative Group (FYDIBOHF23SPDLT)/cn=Recipients/cn=626490df27bf4a98b614c4ec6e8eca1a-PAC051016]; Kasey Markland (KaseyMarkland@packagingcorp.com) [/o=PackagingCorp/ou=Exchange Administrative Group (FYDIBOHF23SPDLT)/cn=Recipients/cn=55bb92fccc1a4f0d9abc5ec11ebc38da-Markland,]; Charlie Dietrich [charlied@basindisposal.com]; Castillo, Jesus [/o=PackagingCorp/ou=Exchange Administrative Group (FYDIBOHF23SPDLT)/cn=Recipients/cn=416871999f3343828abc798648ca1272-Castillo,]

Subject: OCC Rejects Hauling Plans

Location: Meet by BDI Dumpsters

Start: 7/19/2021 5:00:00 PM

End: 7/19/2021 6:00:00 PM

Show Time As: Busy

Required Attendees: Kurt Thorne (KurtThorne@packagingcorp.com); Brian Wilhelm (BrianWilhelm@packagingcorp.com); Cova, Paul; Kasey Markland (KaseyMarkland@packagingcorp.com); Charlie Dietrich; Castillo, Jesus

Meeting to discuss BDI's proposal for hauling rejects from the OCC Plant.

PO Date 12/15/2020
 Vendor: 195-1 BASIN DISPOSAL INC

***** COPY ONLY *** Purchase Order *** COPY ONLY *****

Purchase Order # 215863

Attn: PO BOX 3850
 PASCO, WA 99302-3850
 Vendor Fax (509)547-8617

*** SHIP TO ***
 PACKAGING CORP OF AMERICA
 31831 W Highway 12
 P.O. BOX 138
 WALLULA, WA 99363

*** SEND INVOICE TO ***
 ATTN: Accounts Payable
 wllaccountspayable@packagingcorp.com
 PACKAGING CORP OF AMERICA
 P.O. BOX 138
 WALLULA, WA 99363

220243 and 220215 Exh. SR X
 220243 and 220215 Exh. BW X
 220243 and 220215 Exh. KT X

Item/Stock #	Quantity	Description	PO Type : Contract	Lump Sum	Price	UOM	Due Date
Purchase Order to cover period 1/1/2021 to 12/31/2021							
[A/P Terms:Net 30 Days]		[Ship Via:Best Way]	[Freight Terms:Allowed]	[F.O.B:Your Store]	Acct #53-0-990-0000-651-58		
1	1	2021 BLANKET PO FOR - SOLID WASTE DISPOSAL - BDI ACCOUNT NUMBER 1925721 ONLY			198,000.00	Lot	12/31/2021
*** Closed Item ***							
					Grand Total		198,000.00

REPLACES 2020 blanket PO 206066 EFFECTIVE 01/01/2021

THIS BLANKET PURCHASE ORDER IS TO BE UTILIZED FOR 2021 TRANSACTIONS ONLY.
 DOCUMENTS AND COMMUNICATIONS RELATED TO THIS ORDER MUST REFERENCE THE PURCHASE ORDER NUMBER AS LISTED ABOVE.

QUANTITIES NOTED ON THIS PURCHASE ORDER ARE FOR ACCOUNTING PURPOSES ONLY AND DO NOT REPRESENT A COMMITMENT ON THE PART OF PACKAGING CORPORATION OF AMERICA.
 PLEASE DIRECT QUESTIONS PERTAINING TO THIS PURCHASE ORDER TO THE PURCHASING AGENT LISTED AT THE BOTTOM OF THIS DOCUMENT.

Requisitioner Gibson, Paul
 WO # 0
 Req # 192262



Printed By:
 Mcauslan, Amanda
 10/28/2022 9:47 Am

Sales Tax

DO NOT CHARGE SALES TAX CHANGE SALES TAX

DIRECT PAY PERMIT: CERT. NO. **602797815-072/DP**

This P.O. is issued subject to PCA's Purchase Order Terms and Conditions unless stated otherwise on the Purchase Order
<http://www.packagingcorp.com/doinq-business-with-pca>

Packaging Corporation of America

Phone # (509)545-3230
 Fax # (208)395-7589
 Contact Ferguson, Glenn
 Email glennferguson@packagingcorp.com
 Purchase Order # 215863

No Chinese or Indian Steel or castings are to be provided to PCA. Material Certifications showing test results and country of origin are required on all steel products.

PO Date 4/14/2021
 Vendor: 195-1 BASIN DISPOSAL INC
 *** COPY ONLY *** Purchase Order # 219633

220243 and 220215 Exh. SR X
 220243 and 220215 Exh. BW X
 220243 and 220215 Exh. KT X
 PO BOX 3850
 PASCOC, WA 99302-3850
 Vendor Fax (509)547-8617
 ** Print **
 *** SHIP TO ***
 PACKAGING CORP OF AMERICA
 31831 W Highway 12
 P.O. BOX 138
 WALLULLA, WA 99363
 *** SEND INVOICE TO ***
 ATTN: Accounts Payable
 wallaccountspayable@packagingcorp.com
 PACKAGING CORP OF AMERICA
 P.O. BOX 138
 WALLULLA, WA 99363

Item/Stock # Quantity Description PO Type : Contract Lump Sum Price UOM Due Date

[A/P Terms:Net 30 Days] [Ship Via:Vendor Truck] Purchase Order to cover period 1/1/2021 to 12/31/2021 Acct #53-0-990-0000-651-37

1 1 2021 BLANKET PO - OCC PRODUCTION WASTE STREAM - BDI ACCOUNT NUMBER 1924900 ONLY 819,253.82 Lot 4/21/2021

*** Closed Item ***

[A/P Terms:Net 30 Days] [Ship Via:Best Way] [Freight Terms:Allowed] [F.O.B:Your Store] Acct #53-0-990-0000-651-37

2 1 Change order to increase total PO amount for PO line1 - to cover outstanding invoice 4152821 and the remainder of services for 2021 calendar year. .01 Lot 12/9/2021

*** Closed Item ***

*** CHANGE ORDER *****

[A/P Terms:Net 30 Days] [Ship Via:Best Way] [Freight Terms:Allowed] [F.O.B:Your Store] Acct #53-0-990-0000-651-37

3 1 Change order for BDI OCC rejects hauling for 2021 .01 Each 12/17/2021

*** Closed Item ***

**** CHANGE ORDER *****

Added by change order:

Terms and Conditions of this change order are the same as the original PO.

Added by change order:

Terms and Conditions of this change order are the same as the original PO.

Grand Total 819,253.84

Requisitioner Markland, Kasey

WOC # 0

Req # 194888



Printed By:
 Mcauslan, Amanda
 10/28/2022 10:00 Am

Sales Tax

DO NOT CHARGE SALES TAX
 CHARGE SALES TAX

DIRECT PAY PERMIT:
 CERT. NO. 6022797815-072/DP

This P.O. is issued subject to PCA's Purchase Order Terms and Conditions unless stated otherwise on the Purchase Order
<http://www.packagingcorp.com/doing-business-with-pca>

Packaging Corporation of America

Phone # (509)545-3230

Fax # (208)395-7589

Contact Ferguson, Glenn

Email glennferguson@packagingcorp.com

Purchase Order # 219633

Page 1 of 2

No Chinese or Indian Steel or castings are to be provided to PCA. Material Certifications showing test results and country of origin are required on all steel products.

PO Date 4/14/2021

Vendor: 195-1 BASIN DISPOSAL INC

Attn: P.O. BOX 3850
PACSCO, WA 99302-3850
Page 1 of 1
Vendor Fax (509)547-8617

*** COPY ONLY *** Purchase Order *** COPY ONLY ***

Purchase Order # 219633

*** SHIP TO ***
PACKAGING CORP OF AMERICA
31831 W Highway 12
P.O. BOX 138
WALLULA, WA 99363

*** SEND INVOICE TO ***
ATTN: Accounts Payable
willaccountspayable@packagingcorp.com
PACKAGING CORP OF AMERICA
P.O. BOX 138
WALLULA, WA 99363

Item/Stock #	Quantity	Description	PO Type : Contract	Lump Sum	Price	UOM	Due Date
PLEASE SIGN AND RETURN A COPY OF THIS PURCHASE ORDER TO ACKNOWLEDGE ACCEPTANCE OF THIS ORDER.							
SIGNED							
DATED							

THIS BLANKET PURCHASE ORDER IS TO BE UTILIZED FOR 2021 TRANSACTIONS ONLY.
DOCUMENTS AND COMMUNICATIONS RELATED TO THIS ORDER MUST REFERENCE THE PURCHASE ORDER NUMBER AS LISTED ABOVE.
QUANTITIES NOTED ON THIS PURCHASE ORDER ARE FOR ACCOUNTING PURPOSES ONLY AND DO NOT REPRESENT A COMMITMENT ON THE PART OF PACKAGING CORPORATION OF AMERICA.
PLEASE DIRECT QUESTIONS PERTAINING TO THIS PURCHASE ORDER TO THE PURCHASING AGENT LISTED AT THE BOTTOM OF THIS DOCUMENT.

Requisitioner Markland, Kasey
WO # 0
Req # 194888



Printed By: Mcauslan, Amanda
10/28/2022 10:00 Am

Sales Tax

DO NOT CHARGE SALES TAX
 DIRECT PAY PERMIT: CERT. NO. CHARGE SALES TAX

602797815-072/DP

This P.O. is issued subject to PCA's Purchase Order Terms and Conditions unless stated otherwise on the Purchase Order
<http://www.packagingcorp.com/doinq-business-with-pca>

Packaging Corporation of America

Phone # (509)545-3230
Fax # (208)395-7589
Contact Ferguson, Glenn

Email glennferguson@packagingcorp.com

Purchase Order # 219633

Page 2 of 2

No Chinese or Indian Steel or castings are to be provided to PCA. Material Certifications showing test results and country of origin are required on all steel products.

220243 and 220215 Exh. SR X
 220243 and 220215 Exh. BW X
 220243 and 220215 Exh. KT X

PO Date 3/4/2022
 Vendor: 195-1 BASIN DISPOSAL INC

***** COPY ONLY *** Purchase Order *** COPY ONLY *****

Purchase Order # 228032

Attn: PO BOX 3850
 PACSCO, WA 99302-3850
 Vendor Fax (509)547-8617

*** SHIP TO ***
 PACKAGING CORP OF AMERICA
 31831 W Highway 12
 P.O. BOX 138
 WALLULLA, WA 99363

*** SEND INVOICE TO ***
 ATTN: Accounts Payable
 willaccounts payable@packagingcorp.com
 PACKAGING CORP OF AMERICA
 P.O. BOX 138
 WALLULLA, WA 99363

Item/Stock #	Quantity	Description	PO Type : Contract	Lump Sum	Price	UOM	Due Date
--------------	----------	-------------	--------------------	----------	-------	-----	----------

[AP Terms: Net 30 Days] [F.O.B. Job Site] Purchase Order to cover period 3/1/2022 to 12/31/2022 Acct # 53-0-990-0000-651-37

1	10	2022 BLANKET PO - OCC PRODUCTION WASTE STREAM - BDI ACCOUNT NUMBER 1924900 ONLY			9,500.00	Each	12/31/2022
---	----	---	--	--	----------	------	------------

Grand Total 95,000.00

A VALID CERTIFICATE OF INSURANCE IS REQUIRED BEFORE WORK CAN BE PERFORMED UNDER THIS PURCHASE ORDER. PLEASE EMAIL, FAX, OR MAIL AN UPDATED CERTIFICATE OF INSURANCE TO THE BUYER PROVIDING PURCHASE ORDER FOR THE WORK TO BE PERFORMED.

FAX: 509-545-3797

MAIL: PACKAGING CORPORATION OF AMERICA
 ATTN: PURCHASING COI
 31831 W. HIGHWAY 12
 WALLULLA, WA 99363

THE CERTIFICATE MUST NAME PACKAGING CORPORATION OF AMERICA LLC AS ADDITIONALLY INSURED, PER THE FOLLOWING LANGUAGE:

Packaging Corporation of America, its parents, subsidiaries, affiliates, and employees are added as Additional Insureds (per CG 20 10 07 04 and CG 20 37 07 04). It is agreed Waiver of Subrogation in favor of Certificate Holder is granted. Coverage afforded is primary and non-contributory.

CERTIFICATE MUST LIST THE CERTIFICATE HOLDER AS FOLLOWS:

Packaging Corporation of America
 1 North Field Court
 Lake Forest, IL 60045

THIS BLANKET PURCHASE ORDER IS TO BE UTILIZED FOR 2022 TRANSACTIONS ONLY.

Requisitioner Meriland, Kasey
 WOC # 0
 Req # 200387



Printed By:
 Mcauslan, Amanda
 10/28/2022 10:07 AM

Sales Tax	
<input checked="" type="checkbox"/> DO NOT CHARGE SALES TAX	<input type="checkbox"/> CHARGE SALES TAX
DIRECT PAY PERMIT: CERT. NO. 602797815-072/DP	

This P.O. is issued subject to PCA's Purchase Order Terms and Conditions unless stated otherwise on the Purchase Order
<http://www.packagingcorp.com/doing-business-with-pca>

Packaging Corporation of America

Phone # (509)545-3230
 Fax # (208)395-7589
 Contact Ferguson, Glenn

Email glennferguson@packagingcorp.com

Purchase Order # 228032

No Chinese or Indian Steel or castings are to be provided to PCA. Material Certifications showing test results and country of origin are required on all steel products.

PO Date 3/4/2022

Vendor: 195-1 BASIN DISPOSAL INC

PO BOX 3850
PASCO, WA 99302-3850

*** SHIP TO ***
PACKAGING CORP OF AMERICA
31831 W Highway 12
P.O. BOX 138
WALLULA, WA 99363

*** SEND INVOICE TO ***
ATTN: Accounts Payable
willaccountspayable@packagingcorp.com
PACKAGING CORP OF AMERICA
P.O. BOX 138
WALLULA, WA 99363

*** COPY ONLY *** Purchase Order # 228032

220243 and 220215 Exh. SR X
220243 and 220215 Exh. BW X
220243 and 220215 Exh. A X

QUANTITIES NOTED ON THIS PURCHASE ORDER ARE FOR ACCOUNTING PURPOSES ONLY AND DO NOT REPRESENT A COMMITMENT ON THE PART OF PACKAGING CORPORATION OF AMERICA.
PLEASE DIRECT QUESTIONS PERTAINING TO THIS PURCHASE ORDER TO THE PURCHASING AGENT LISTED AT THE BOTTOM OF THIS DOCUMENT.

Item/Stock #	Quantity	Description	PO Type : Contract	Lump Sum	Price	UOM	Due Date
DOCUMENTS AND COMMUNICATIONS RELATED TO THIS ORDER MUST REFERENCE THE PURCHASE ORDER NUMBER AS LISTED ABOVE.							

Requisitioner Markland, Kasey
 WO # 0
 Req # 200387

Printed By:
 Mcauslan, Amanda
 10/28/2022 10:07 Am



PACKAGING CORPORATION OF AMERICA

Sales Tax

DO NOT CHARGE SALES TAX
 CHARGE SALES TAX

DIRECT PAY PERMITT. CERT. NO.
 602797815-072/DP

This P.O. is issued subject to PCA's Purchase Order Terms and Conditions unless stated otherwise on the Purchase Order
<http://www.packagingcorp.com/doing-business-with-pca>

Packaging Corporation of America

Phone # (509)545-3230
 Fax # (208)395-7589
 Contact Ferguson, Glenn
 Email glennferguson@packagingcorp.com

Purchase Order # 228032
 Page 2 of 2

No Chinese or Indian Steel or castings are to be provided to PCA. Material Certifications showing test results and country of origin are required on all steel products.

PO Date 1/3/2020
 Vendor: 195-1 BASIN DISPOSAL INC

***** COPY ONLY *** Purchase Order *** COPY ONLY *****

Purchase Order # 206066

PO BOX 3850
 PASCO, WA 99302-3850
 Vendor Fax (509)547-8617

*** SHIP TO ***
 PACKAGING CORP OF AMERICA
 31831 W Highway 12
 P.O. BOX 138
 WALLULA, WA 99363

*** SEND INVOICE TO ***
 ATTN: Accounts Payable
 willaccounts payable@packagingcorp.com
 PACKAGING CORP OF AMERICA
 P.O. BOX 138
 WALLULA, WA 99363

Item/Stock #	Quantity	Description	PO Type : Contract	Lump Sum	Price	UOM	Due Date
Purchase Order to cover period 1/1/2020 to 12/31/2020							
[A/P Terms: Net 30 Days] [Ship Via: Best Way] [Freight Terms: Allowed] [F.O.B: Your Store]				Acct # 53-0-990-0000-651-58			
1	1	2020 BLANKET PO FOR - SOLID WASTE DISPOSAL - BDI ACCOUNT NUMBER 1925721 ONLY			162,000.00	Lot	1/1/2020
*** Closed Item ***							

Grand Total

162,000.00

THIS BLANKET PURCHASE ORDER IS TO BE UTILIZED FOR 2020 TRANSACTIONS ONLY.
 DOCUMENTS AND COMMUNICATIONS RELATED TO THIS ORDER MUST REFERENCE THE PURCHASE ORDER LISTED ABOVE.
 QUANTITIES NOTED ON THIS PURCHASE ORDER ARE FOR ACCOUNTING PURPOSES ONLY AND DO NOT REPRESENT A COMMITMENT ON THE PART OF PACKAGING CORPORATION OF AMERICA.
 CONTACT PURCHASING AGENT GLENN FERGUSON FOR QUESTIONS PERTAINING TO THIS PO VIA ANY OF THE FOLLOWING METHOD:
 EMAIL: Glenn.Ferguson@packagingcorp.com
 PHONE: 509-545-3230
 FAX: 208-395-7589

Requisitioner Gibson, Paul
 WO # 0
 Req # 185761



Printed By:
 McAulian, Amanda
 10/28/2022 9:25 Am

Sales Tax

DO NOT CHARGE SALES TAX CHARGE SALES TAX

DIRECT PAY PERMIT: CERT. NO. 602797815-072/DP

This P.O. is issued subject to PCA's Purchase Order Terms and Conditions unless stated otherwise on the Purchase Order
<http://www.packagingcorp.com/doinp-business-with-pca>

Packaging Corporation of America

Phone # (509)545-3230
 Fax # (208)395-7589
 Contact Ferguson, Glenn
 Email glennferguson@packagingcorp.com

Purchase Order # 206066
 Page 1 of 1

No Chinese or Indian Steel or castings are to be provided to PCA. Material Certifications showing test results and country of origin are required on all steel products.

220243 and 220215 Exh. SR X
 220243 and 220215 Exh. BW X
 220243 and 220215 Exh. KT X

PO Date 12/21/2021
 Vendor: 195-1 BASIN DISPOSAL INC

***** COPY ONLY *** Purchase Order *** COPY ONLY *****

Purchase Order # 225882

Attn: PO BOX 3850
 PASCAGO, WA 99302-3850
 Page 35
 Vendor Fax (509)547-8617

*** SHIP TO ***
 PACKAGING CORP OF AMERICA
 31831 W Highway 12
 P.O. BOX 138
 WALLULA, WA 99363

*** SEND INVOICE TO ***
 ATTN: Accounts Payable
 willaccounts payable@packagingcorp.com
 PACKAGING CORP OF AMERICA
 P.O. BOX 138
 WALLULA, WA 99363

Item/Stock #	Quantity	Description	PO Type : Contract	Lump Sum	Price	UOM	Due Date
Purchase Order to cover period 1/1/2022 to 12/31/2022							
		[A/P Terms:Net 30 Days] [Ship Via:Vendor Truck] [Freight Terms:Delivery At Place] [F.O.B.Job Site]	Acct #53-0-990-0000-651-58				
1	1	2022 BLANKET PO FOR - SOLID WASTE DISPOSAL - BDI ACCOUNT NUMBER 1925721 ONLY		193,000.00		Lot	12/31/2022
		[A/P Terms:Net 30 Days] [Ship Via:Vendor Truck] [Freight Terms:Delivery At Place] [F.O.B.Job Site]	Acct #53-0-990-0000-651-58				
2	1	2022 BLANKET PO FOR - DISPOSAL OF ASBESTOS ABATEMENT WASTE IN PCA ASBESTOS CONTAINER - BDI ACCOUNT NUMBER 1921807 ONLY		5,000.00		Lot	12/31/2022
				Grand Total	198,000.00		

THIS BLANKET PURCHASE ORDER IS TO BE UTILIZED FOR 2022 TRANSACTIONS ONLY.
 DOCUMENTS AND COMMUNICATIONS RELATED TO THIS ORDER MUST REFERENCE THE PURCHASE ORDER NUMBER AS LISTED ABOVE.
 QUANTITIES NOTED ON THIS PURCHASE ORDER ARE FOR ACCOUNTING PURPOSES ONLY AND DO NOT REPRESENT A COMMITMENT ON THE PART OF PACKAGING CORPORATION OF AMERICA.
 PLEASE DIRECT QUESTIONS PERTAINING TO THIS PURCHASE ORDER TO THE PURCHASING AGENT LISTED AT THE BOTTOM OF THIS DOCUMENT.

Requisitioner Gibson, Paul
 WO # 0
 Req # 199027

Printed By: Mcauslan, Amanda



10/28/2022 10:06 Am

Sales Tax
 DO NOT CHARGE SALES TAX
 CHANGE SALES TAX
 DIRECT PAY PERMIT: CERT. NO. 602797815-072/DP

This P.O. is issued subject to PCA's Purchase Order Terms and Conditions unless stated otherwise on the Purchase Order
<http://www.packagingcorp.com/doin-business-with-pca>

Packaging Corporation of America

Phone # (509)545-3230
 Fax # (208)395-7589
 Contact Ferguson, Glenn
 Email glennferguson@packagingcorp.com

Purchase Order # 225882

No Chinese or Indian Steel or castings are to be provided to PCA. Material Certifications showing test results and country of origin are required on all steel products.