

Exh. CAT-22
Docket UE-19 _____
Witness: Chad A. Teply

**BEFORE THE WASHINGTON
UTILITIES AND TRANSPORTATION COMMISSION**

WASHINGTON UTILITIES AND
TRANSPORTATION COMMISSION,

Complainant,

v.

PACIFICORP dba
PACIFIC POWER & LIGHT COMPANY

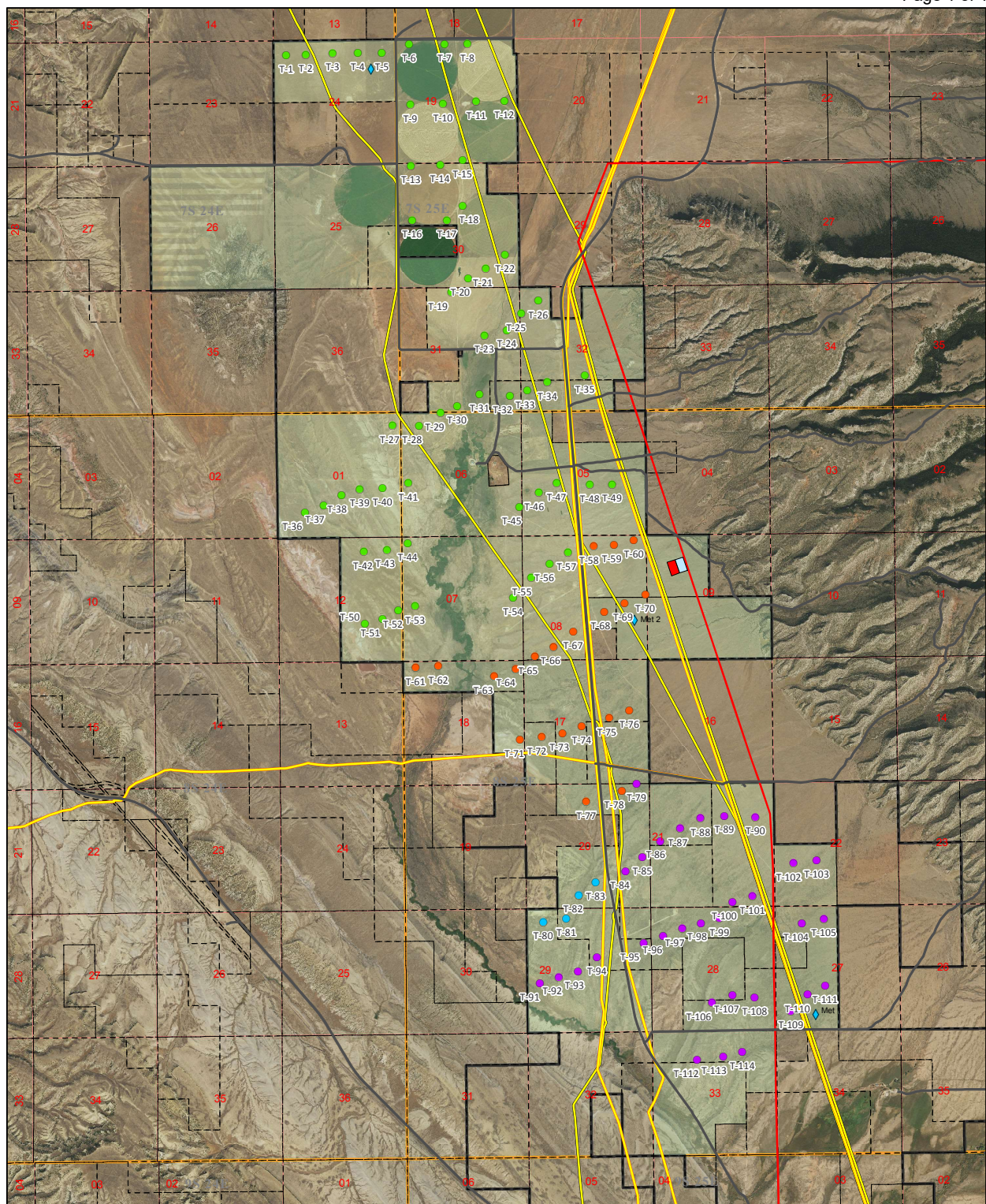
Respondent.

Docket UE-19 _____

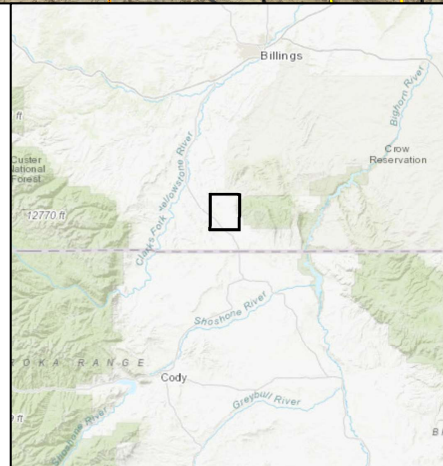
**PACIFICORP
EXHIBIT OF CHAD A. TEPLY**

Site Plan Pryor Mountain

December 2019



- V110-2.0MK10B
- V110-2.2MK10C
- V110-2.2MK10D
- ◆ GE2.3-116
- Permanent Met Masts
- Collector Substation
- POI Substation
- Public Roads
- Transmission Line
- Natural Gas Pipelines
- Oil Pipelines
- Active Development Area
- 2014 SWPPP Boundary
- Parcel Boundaries



Pryor Mountain Wind Farm

Turbine Layout
Revision 13

Carbon County, Montana
14 November 2019

[Preliminary/Subject to Change](#)

N
0 0.25 0.5 1 1.5 Miles
0 0.5 1 2 Kilometers