

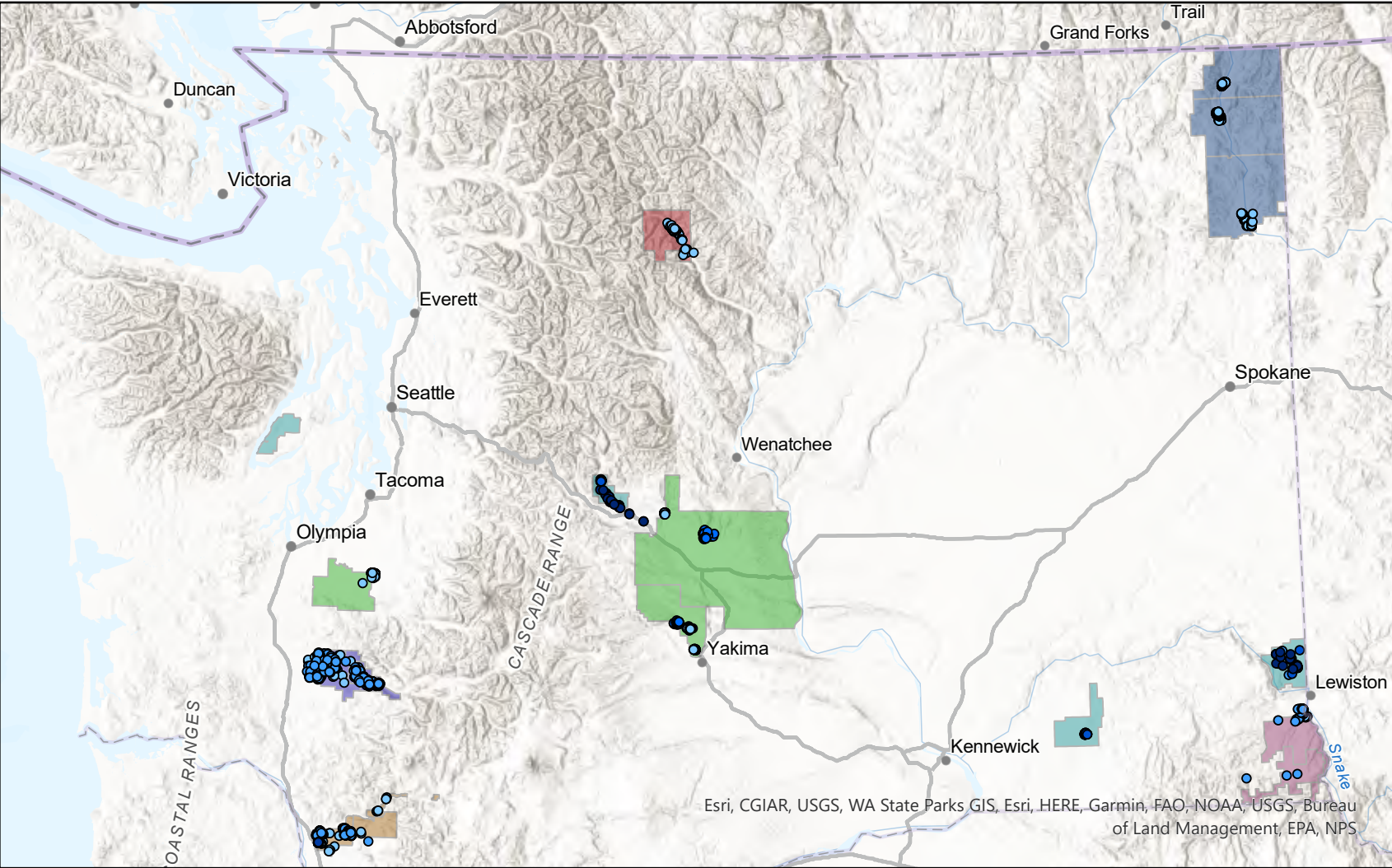
# SUSF Criterion Two Supported Broadband Locations

## Companies

- Asotin Telephone Company
- Consolidated Communications of WA Co., LLC
- Inland Telephone Company
- Lewis River Telephone Company, Inc.
- McDaniel Telephone Company
- Pend Oreille Telephone Company
- Westgate Communications LLC

## Broadband Speed

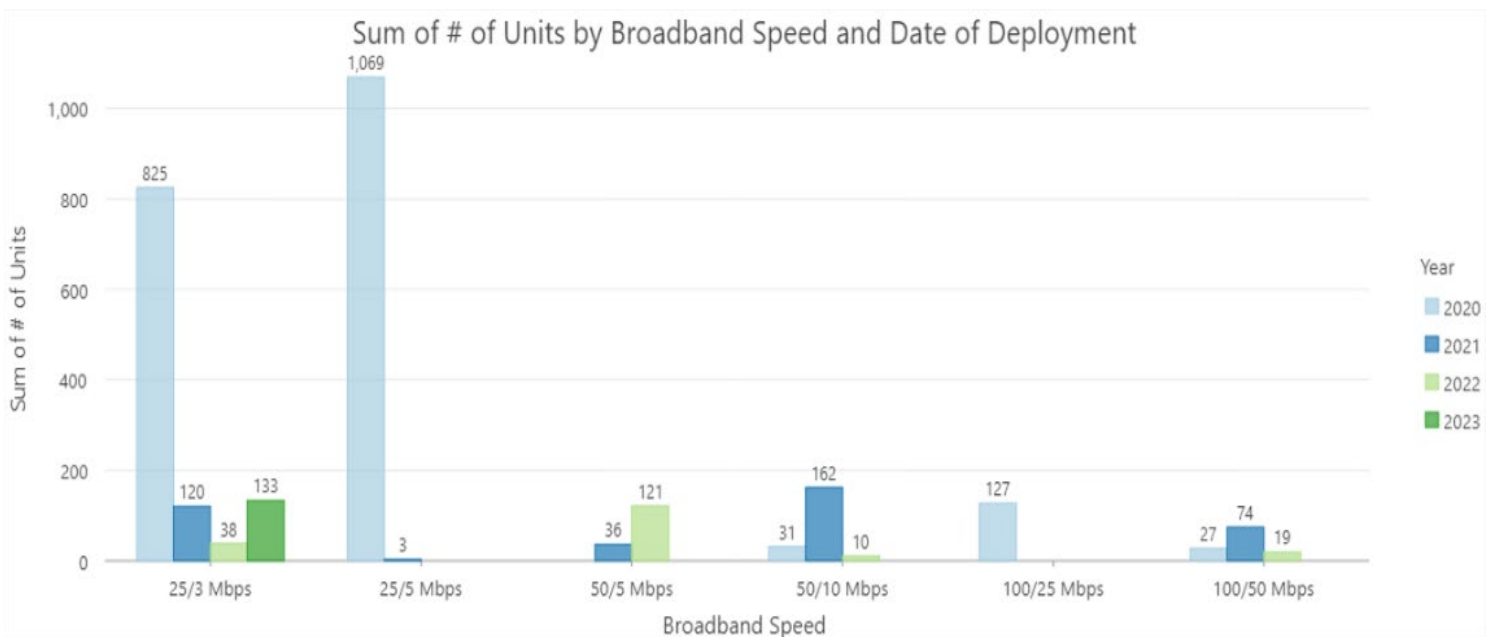
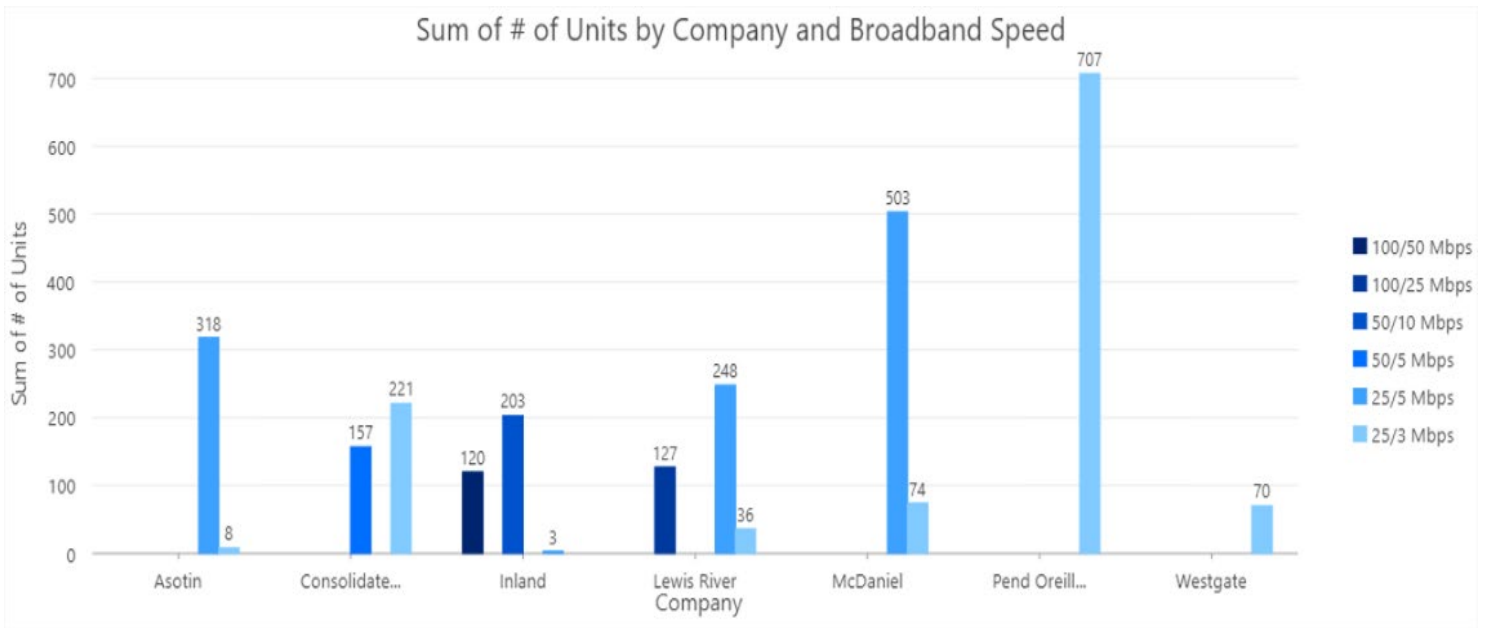
- 100/50 Mbps
- 100/25 Mbps
- 50/10 Mbps
- 50/5 Mbps
- 25/5 Mbps
- 25/3 Mbps
- 10/1 Mbps



Seven companies previously petitioned the UTC for support under eligibility criterion two. Each company made a commitment to deploy 25/3 Mbps (or faster) broadband consistent with the UTC Broadband Buildout requirement by June 30, 2024.

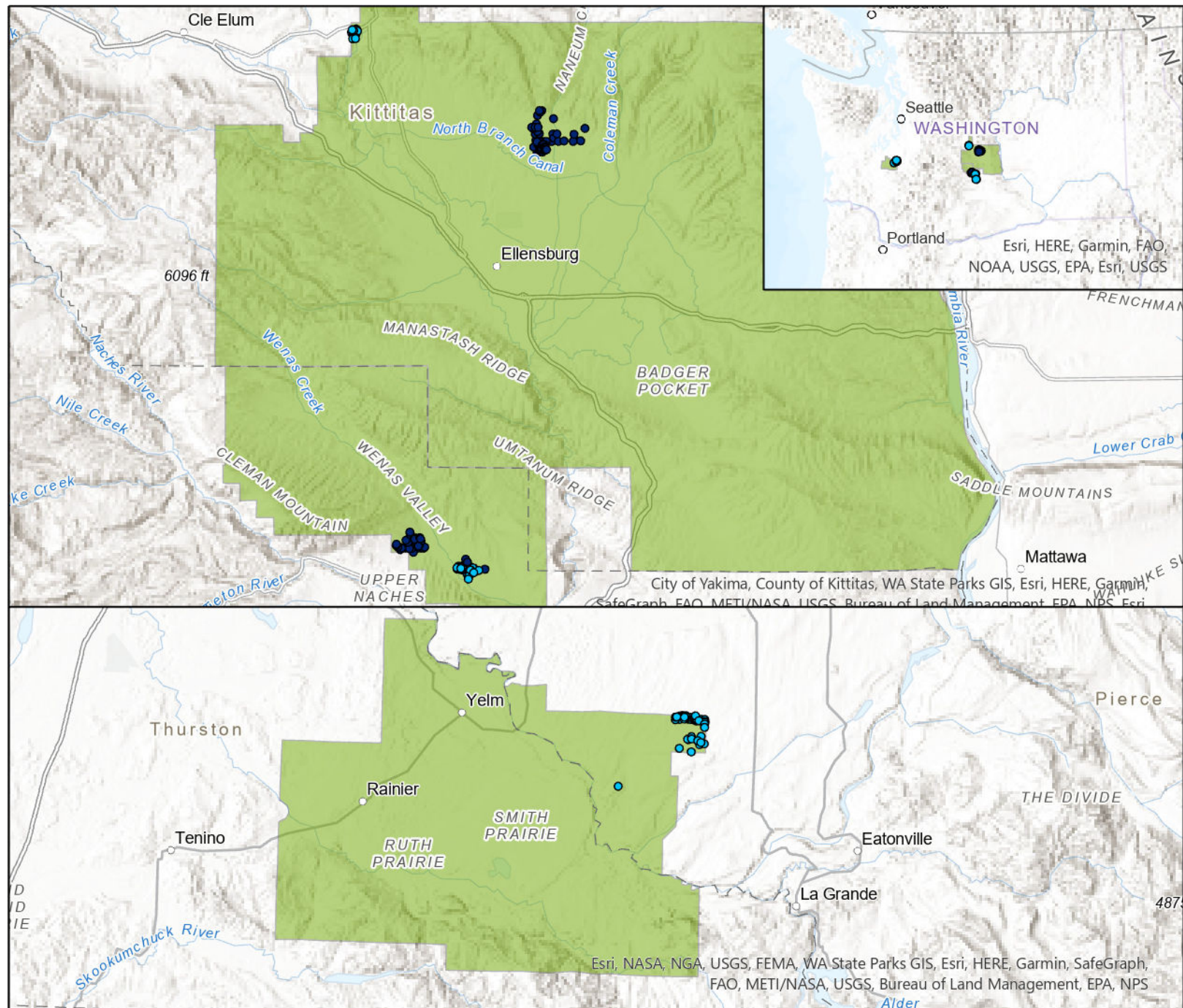
Six companies (Asotin, Inland, Lewis River, McDaniel, Pend Oreille, and Westgate) met its UTC Broadband Buildout requirement.

Consolidated deployed to 378 of its 398 UTC Broadband Buildout requirement.



Note: Companies continue to deploy broadband to additional locations, however, companies only report locations initially used to meet their UTC Broadband Buildout obligation. Staff verified that locations are not reported to the FCC’s portal to meet a company’s federal high-cost broadband buildout obligation.

# Consolidated's SUSF Supported Broadband Locations



**SUSF Buildout Locations FY21-23**

**Broadband\_Speed**

- 50/5 Mbps
- 25/3 Mbps

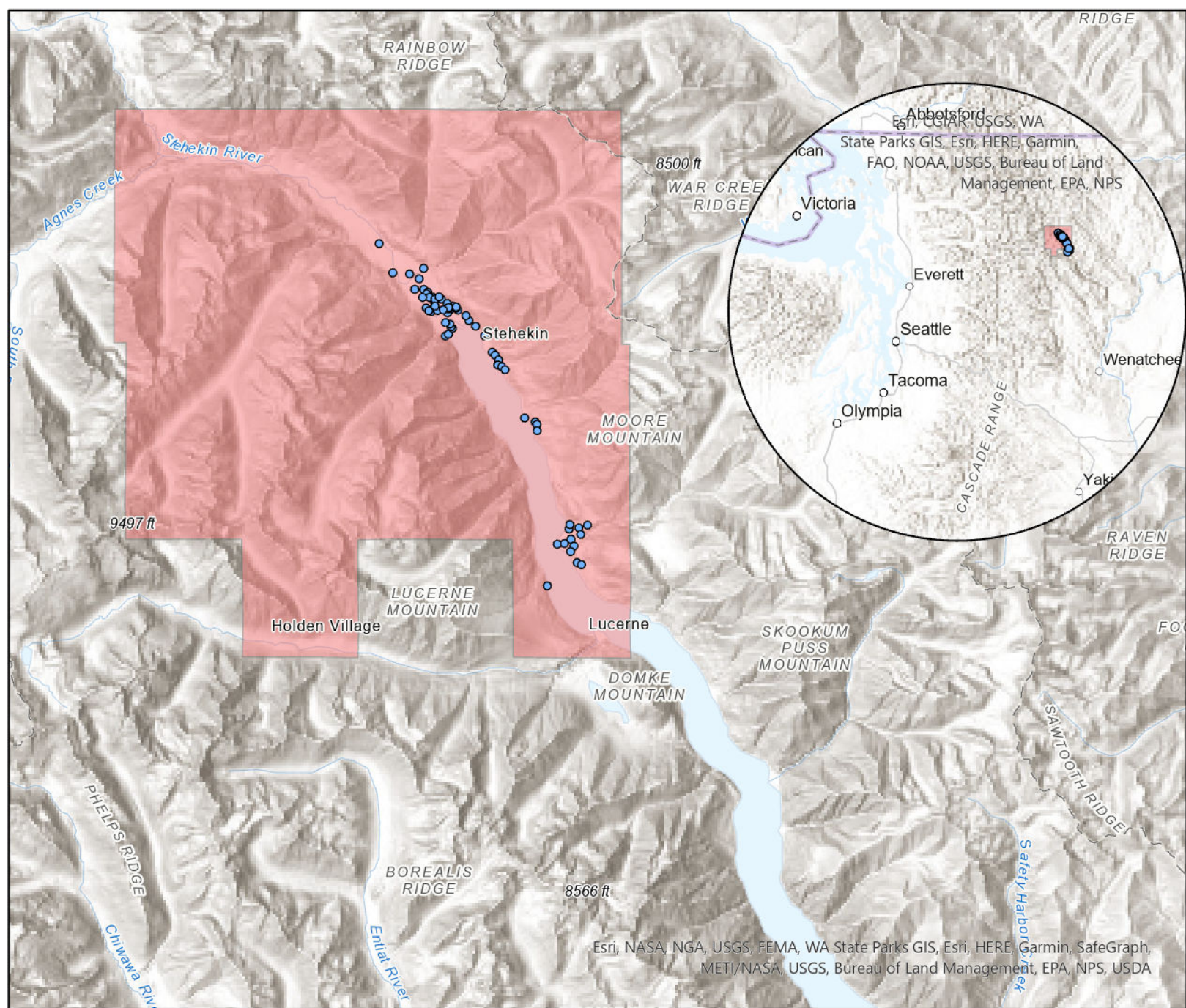
**Criterion II Study Areas**

Consolidated  
 Communications  
 of WA Co., LLC

Consolidated has a SUSF UTC Broadband Buildout obligation of 398 locations by June 30, 2024. Consolidated has provided coordinates for 378 location to which it has deployed 25/3 Mbps (or faster) broadband during the 2022 and 2023 fiscal years.

This consists of 157 locations with 50/5 Mbps capability and 221 locations with 25/3 Mbps broadband capability.

# Westgate's SUSF Supported Broadband Locations



## SUSF Buildout Locations FY23

### Broadband\_Speed

- 25/3 Mbps

### Criterion II Study Areas

- Westgate
- Communications LLC

Westgate has a SUSF UTC Broadband Buildout obligation of 70 locations by June 30, 2024. Westgate has provided coordinates for 70 location to which it has deployed 25/3 Mbps (or faster) broadband capability during the 2023 fiscal year.

Esri, NASA, NGA, USGS, FEMA, WA State Parks GIS, Esri, HERE, Garmin, SafeGraph, METI/NASA, USGS, Bureau of Land Management, EPA, NPS, USDA