

Exh. CAT-9
Docket UE-19____
Witness: Chad A. Teply

**BEFORE THE WASHINGTON
UTILITIES AND TRANSPORTATION COMMISSION**

WASHINGTON UTILITIES AND
TRANSPORTATION COMMISSION,

Complainant,

v.

PACIFICORP dba
PACIFIC POWER & LIGHT COMPANY

Respondent.

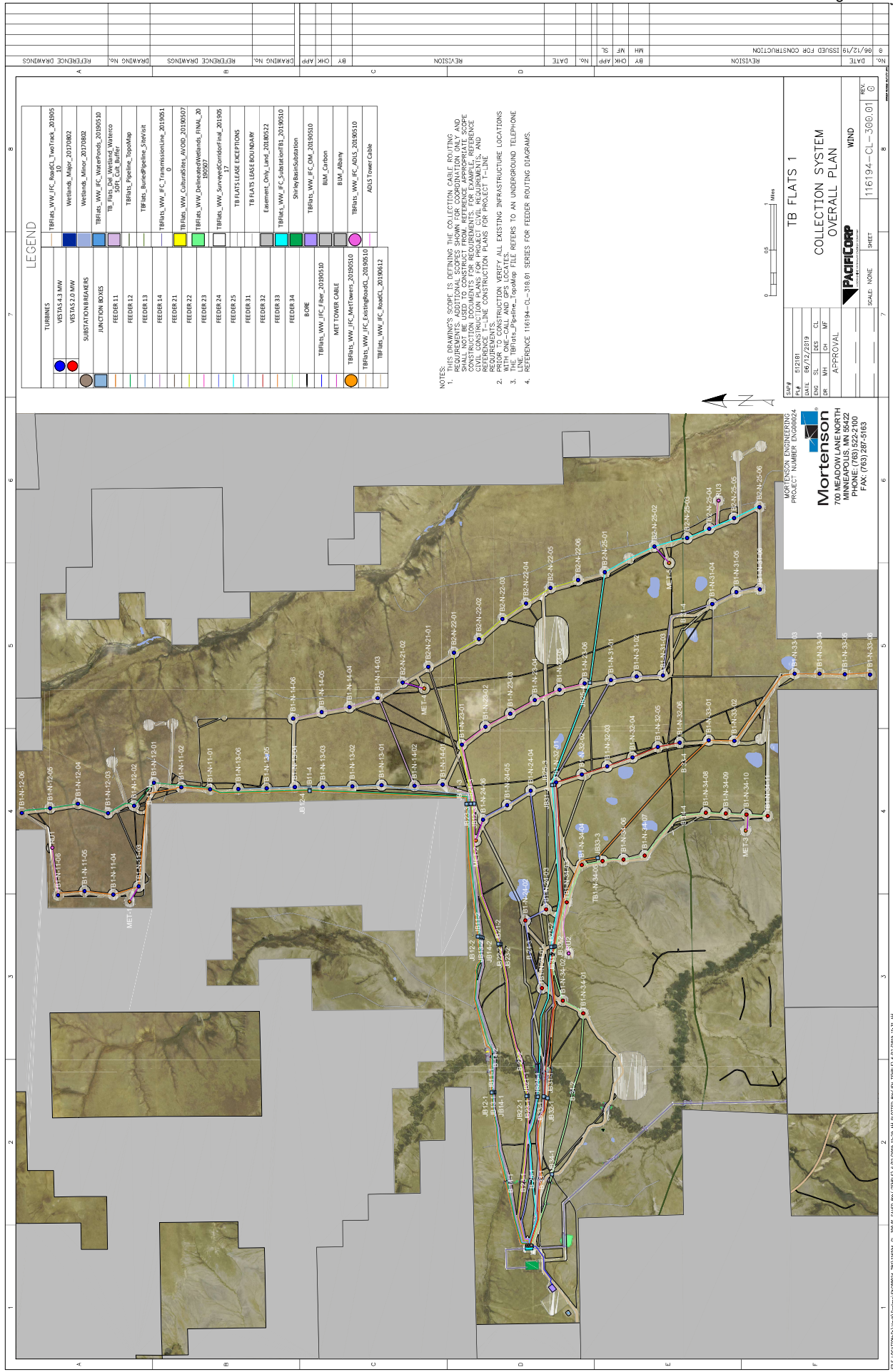
Docket UE-19____

PACIFICORP

EXHIBIT OF CHAD A. TEPLY

Site Plan TB Flats

December 2019



LEGEND

TURBINES	TBFlats_WW_JFC_Boards_WebTrack_20190510
VISTAS 3.0 MW	WebTrack_Major_20170802
VISTAS 2.0 MW	WebTrack_Misc_20170802
SUBSTATION BARRIERS	
JUNCTION BOXES	TBFlats_WW_JFC_Waterpoles_20190510
FEEDER 11	TBFlats_WW_JFC_CableMap_20190510
FEEDER 12	TBFlats_Pipeline_Topomap
FEEDER 13	TBFlats_BoreingPipeline_Sterisist
FEEDER 14	TBFlats_WW_JFC_TransmissionLine_20190510
FEEDER 21	TBFlats_WW_JFC_CultureLine_AVOID_20190507
FEEDER 22	TBFlats_WW_JFC_DebrisCollectionLine_FINAL_20190507
FEEDER 23	TBFlats_WW_JFC_DebrisCollectionLine_FINAL_20190507
FEEDER 24	TBFlats_WW_SurveyedContourLine_20190517
FEEDER 25	TB FLATS LEASE EXCEPTIONS
FEEDER 31	TB FLATS LEASE BOUNDARY
FEEDER 32	Easement_Own_Land_20180522
FEEDER 33	TBFlats_WW_JFC_SubstationBarr_20190510
FEEDER 34	Sh-ley/Beaubsabatation
BORE	TBFlats_WW_JFC_Fiber_20190510
MET TOWER CABLE	BMK_Carbon
TBFlats_WW_JFC_Avoidance_20190510	BMK_Abbey
TBFlats_WW_JFC_ExistingBoards_20190510	TBFlats_WW_JFC_Avoid_20190510
TBFlats_WW_JFC_Boards_20190512	ADULT TOWER CABLE

NOTES:
 1. THIS DRAWING SHOWS THE COLLECTION CABLE ROUTING. REQUIREMENTS, ADDITIONAL NOTES FOR COORDINATION ONLY AND SHALL NOT BE USED TO CONSTRUCT THE PROJECT. THE PROJECT SHALL BE CONSTRUCTED IN ACCORDANCE WITH THE APPROPRIATE SCOPE AND CIVIL CONSTRUCTION PLANS FOR PROJECT. CIVIL REQUIREMENTS, AND REQUIREMENTS LINE CONSTRUCTION PLANS FOR PROJECT 1-LINE.
 2. PRIOR TO CONSTRUCTION VERIFY ALL EXISTING INFRASTRUCTURE LOCATIONS.
 3. THE TBFlats_Pipeline_Topomap FILE REFERS TO AN UNDERGROUND TELEPHONE.
 4. REFERENCE 116194-CL-318.01 SERIES FOR FEEDER ROUTING DIAGRAMS.

TB FLATS 1
COLLECTION SYSTEM
OVERALL PLAN

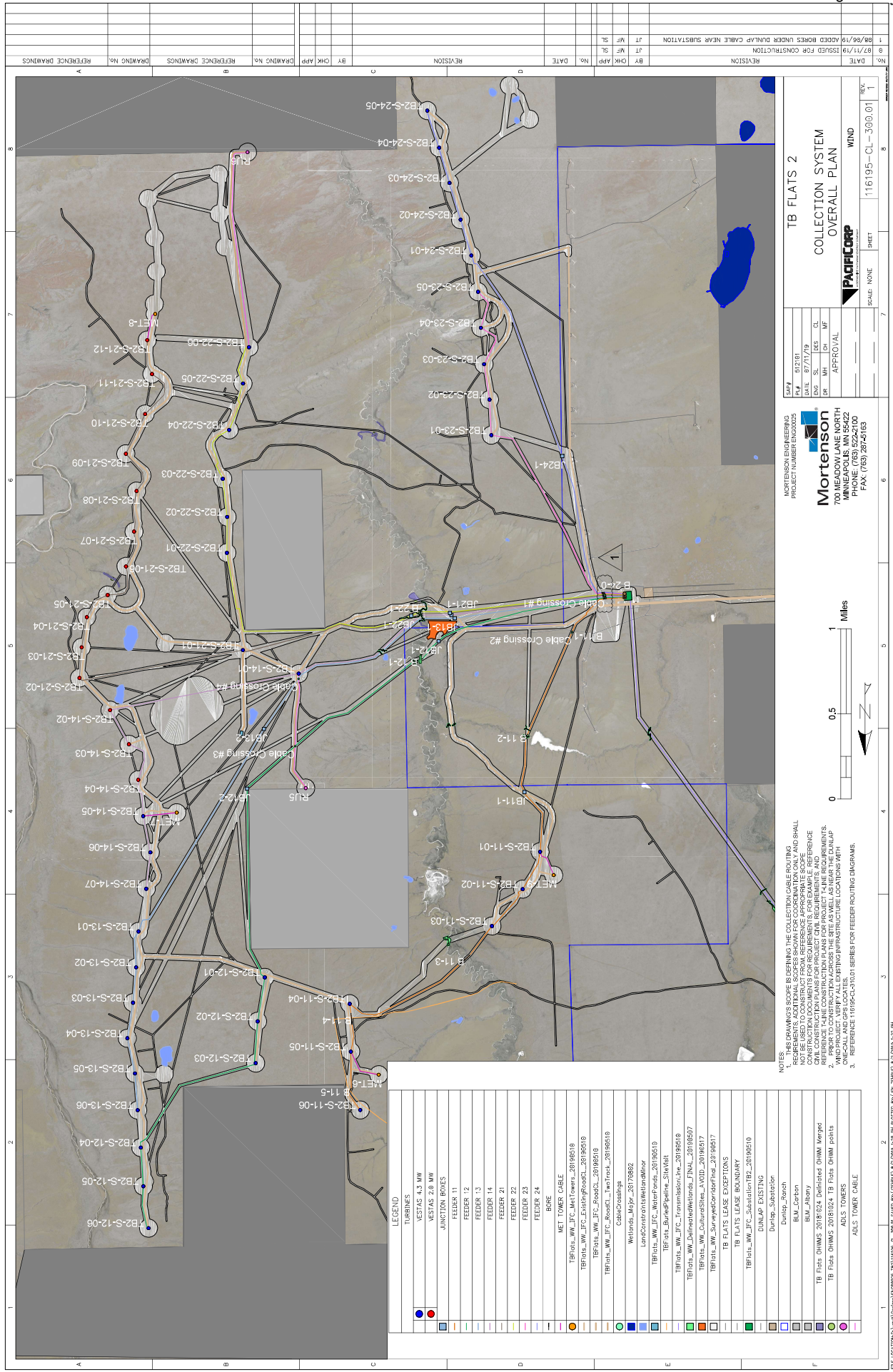
PACIFICORP
 ENERGY SERVICES

SCALE: NONE
 SHEET: 116194-CL-318.01
 OF: 6

DATE: 06/12/19
 ISSUED FOR CONSTRUCTION

Mortenson ENGINEERING
 PROJECT NUMBER: ENG080924

Mortenson
 700 MEDDEN LANE NORTH
 MINNEAPOLIS, MN 55422
 PHONE: (763) 622-2100
 FAX: (763) 287-5163



LEGEND

[Symbol]	TURBINES
[Symbol]	WESTAS 4.2 MW
[Symbol]	WESTAS 2.8 MW
[Symbol]	JUNCTION BOXES
[Symbol]	FELDER 11
[Symbol]	FEEDER 12
[Symbol]	FEEDER 13
[Symbol]	FEEDER 14
[Symbol]	FEEDER 21
[Symbol]	FEEDER 22
[Symbol]	FEEDER 23
[Symbol]	FEEDER 24
[Symbol]	BORE
[Symbol]	MET TOWER
[Symbol]	TB Flats_WW_JFC_MatTowers_20190519
[Symbol]	TB Flats_WW_JFC_ExistingPODCL_20190519
[Symbol]	TB Flats_WW_JFC_PodCL_20190519
[Symbol]	TB Flats_WW_JFC_RoadCL_20190519
[Symbol]	CableCrossing
[Symbol]	Waterlines_MSPF_20170802
[Symbol]	LandConstructionMaterial
[Symbol]	TB Flats_WW_JFC_WaterCable_20190519
[Symbol]	TB Flats_Burke@Selle_SiteCL
[Symbol]	TB Flats_WW_JFC_TransmissionLine_20190519
[Symbol]	TB Flats_WW_DelineatedRoads_TSNL_20190507
[Symbol]	TB Flats_WW_ColourLines_AVD_20190517
[Symbol]	TB Flats_WW_SurveyControlPoint_20190517
[Symbol]	TB FLATS LEASE BOUNDARY
[Symbol]	TB FLATS LEASE EXCEPTIONS
[Symbol]	TB Flats_WW_JFC_SubstationTB_20190519
[Symbol]	DUNLAP EXISTING
[Symbol]	Dunlap-Substation
[Symbol]	Dunlap-Ranch
[Symbol]	BLM_Corbin
[Symbol]	BLM_Abbey
[Symbol]	TB Flats OHMMS_20180224_Defined OHM Mapped
[Symbol]	TB Flats OHMMS_20180224_TB Flats OHM points
[Symbol]	ADLS TOWERS
[Symbol]	ADLS TOWER CABLE

NOTES

1. THIS DRAWING'S SCOPE IS DEFINING THE COLLECTION CABLE ROUTING REQUIREMENTS. ADDITIONAL SCOPES SHOWN FOR COORDINATION ONLY AND SHALL NOT BE CONSIDERED FOR CONSTRUCTION. FOR EXAMPLE, REFERENCE CONSTRUCTION DOCUMENTS FOR REQUIREMENTS FOR PROJECT NAME REQUIREMENTS. PLEASE CONSTRUCTION PLANS FOR PROJECT NAME REQUIREMENTS.
2. PRIOR TO CONSTRUCTION ADDRESS THE SITES AS WELL AS NEAR THE DUNLAP CABLE CROSSING WITH THE FOLLOWING FIGURE LOCATIONS WITH ONE-CALL AND GPS LOCATES.
3. REFERENCE 116195-CL-390.01 SERIES FOR FEEDER ROUTING DIAGRAMS.

TB FLATS 2
COLLECTION SYSTEM
OVERALL PLAN

SCALE: NONE
SHEET: 7
PROJECT: 116195-CL-390.01

MORTENSON ENGINEERING
PROJECT NUMBER: EN000003
DATE: 07/17/19
BY: [Signature]
APP'D: [Signature]

Mortenson
700 MEADOW LANE NORTH
MINNEAPOLIS, MN 55422
PHONE: (763) 522-2100
FAX: (763) 287-2163

No.	DATE	REVISION	BY	CHK	APP	DRAWING NO.	REFERENCE DRAWINGS
9	8/7/19	ISSUED FOR CONSTRUCTION					
8	8/6/19	ADDED BORES UNDER DUNLAP CABLE NEAR SUBSTATION					