

Liz Norton, Director,  
Products/Services

Tom Maclean, Manager,  
Customer Renewables



## PSE's Commitment

- The market is evolving
- PSE is evolving with its customers
- We are committed to assisting our customers meet their distributed generation needs

## PSE's Current Suite of Services

PSE works with customers everyday...

- Schedule 91 - Power Purchase Agreements (PPAs) for local energy projects up to 5 MW
- Net Energy Metering (new metering)
- Optional Production Metering
- Solar Referrals through our Contactor Alliance Network
- Green Power Program

3

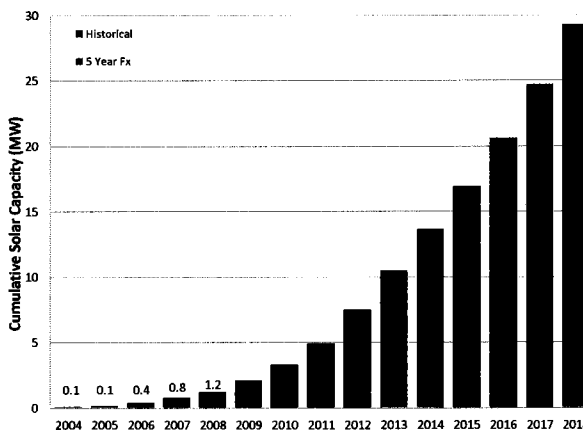


## PSE by the Numbers

### The Stats

- 1,810 NEM customers
  - 5 Micro hydro
  - 35 Wind
  - 1770 PV
- 10.2 MW capacity
- 4.8 KW median PV system size
- 1/3 of power needs
- 36% WA made panels
- 1,700 in Production Metering
- ~\$2 Million annual payments

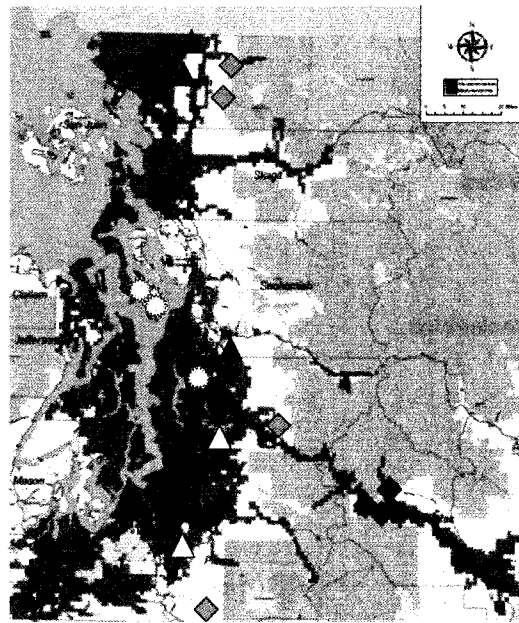
PSE Cumulative Solar Capacity (MW)



4



## Distributed Generation up to 5 MW



### Schedule 91 PPA's

▲ Dairy Digesters

△ Landfill Gas

◆ Micro Hydro

◆ Small Wind

☀ Solar

**PSE** PUGET SOUND ENERGY  
The Energy To Do Great Things

## Issues to Discuss

- Fair Allocation of Costs
  1. Incremental System/Infrastructure Expenses (i.e. transformers, breakers, substations)
  2. Distribution Reliability Expenses
  3. Administrative Expenses
- Appropriate valuation of DG
- Managing customer expectations

**Liz Norton**  
**Director, Products/Services**  
**425.456.2477**

**Tom Maclean**  
**Manager, Customer Renewables**  
**425.462.3064**