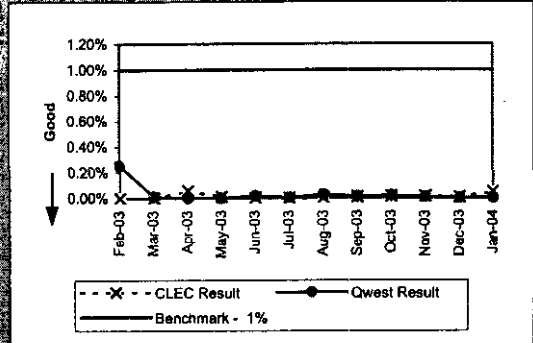
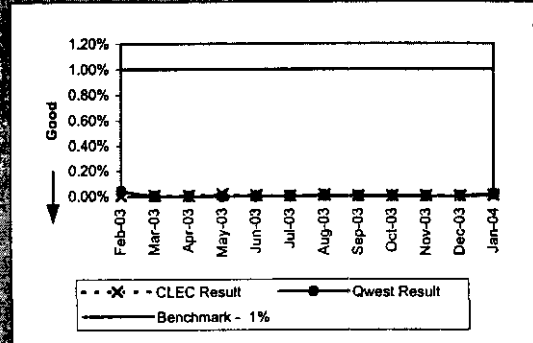


NI-1 - Trunk Blocking

Trunk Blockage to Qwest Tandem Offices (NI-1A) (Benchmark)									
Date	CLEC Num	CLEC Den	CLEC Resu	CLEC Std	Qwest Num	Qwest Den	Qwest Resu	Mod Z Scr	Parity Scr
Feb-03	0	29328	0.00%	0.00%	87.36	34584	0.25%	-26.3	-16.99
Mar-03	0.21	29304	0.00%	0.00%	3.28	34343	0.01%	-18.31	-10.92
Apr-03	18.45	32976	0.06%	0.15%	0	34271	0.00%		
May-03	4.5	33720	0.01%	0.08%	0	34007	0.00%		
Jun-03	1.26	33648	0.00%	0.04%	8.16	34007	0.02%	-18.28	-12.1
Jul-03	0.38	34248	0.00%	0.02%	1.44	34007	0.00%	-8.88	-6.4
Aug-03	0.79	32448	0.00%	0.02%	9.13	33408	0.03%	-19.06	-12.59
Sep-03	3.06	33192	0.01%	0.06%	4.3	33335	0.01%	-5.79	-4.52
Oct-03	4.74	32184	0.01%	0.07%	6.51	33431	0.02%	-8.9	-6.41
Nov-03	4.72	32352	0.01%	0.09%	2.81	33431	0.01%	21.07	11.81
Dec-03	2.48	32664	0.01%	0.06%	0	33431	0.00%		
Jan-04	15.4	31392	0.05%	0.46%	0.95	33431	0.00%	326.9	197.74



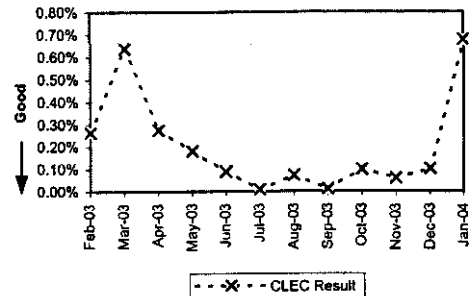
Trunk Blockage to Qwest End Offices (NI-1B) (Benchmark)									
Date	CLEC Num	CLEC Den	CLEC Resu	CLEC Std	Qwest Num	Qwest Den	Qwest Resu	Mod Z Scr	Parity Scr
Feb-03	0.51	20556	0.00%	0.03%	12.61	32588	0.04%	-13.73	-9.35
Mar-03	1.7	21168	0.01%	0.07%	0	32396	0.00%		
Apr-03	0.9	20376	0.00%	0.08%	0	32108	0.00%		
May-03	3.6	20604	0.02%	0.10%	0.01	31796	0.00%	1181.72	717.44
Jun-03	1.49	20940	0.01%	0.07%	0.05	31796	0.00%	235	141.87
Jul-03	0.3	20400	0.00%	0.03%	0	31796	0.00%		
Aug-03	2.13	19956	0.01%	0.09%	1.44	31676	0.00%	11.95	6.28
Sep-03	0.5	20196	0.00%	0.03%	0	31676	0.00%		
Oct-03	0.53	20112	0.00%	0.03%	0.85	31172	0.00%	-0.24	-1.14
Nov-03	0.48	20076	0.00%	0.02%	0.08	31028	0.00%	59.7	35.3
Dec-03	0.13	19908	0.00%	0.01%	0	30327	0.00%		
Jan-04	1.54	19800	0.01%	0.07%	4.2	29031	0.01%	-5.2	-4.16



NI-1 - Trunk Blocking

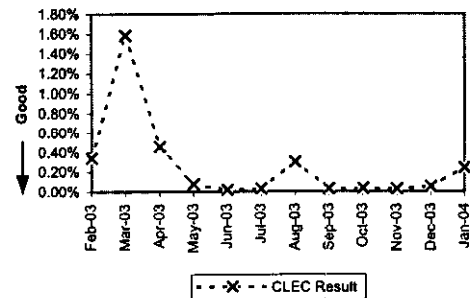
Trunk Blockage to Qwest Tandem Offices (Percent) (NI-1C) (Diagnostic)

Date	Numerator	Denominator	CLEC Result	Standard Deviation
Feb-03	78.89	29976	0.26%	2.42%
Mar-03	205.39	32232	0.64%	4.16%
Apr-03	91.37	33192	0.28%	2.71%
May-03	61.33	34176	0.18%	1.73%
Jun-03	29.96	34200	0.09%	0.66%
Jul-03	3.13	34440	0.01%	0.11%
Aug-03	24.02	33432	0.07%	0.46%
Sep-03	3.98	33264	0.01%	0.08%
Oct-03	32.73	32976	0.10%	0.58%
Nov-03	19.6	32736	0.06%	0.44%
Dec-03	33.8	32976	0.10%	0.97%
Jan-04	228.22	33648	0.68%	4.42%



Trunk Blockage to Qwest End Offices (Percent) (NI-1D) (Diagnostic)

Date	Numerator	Denominator	CLEC Result	Standard Deviation
Feb-03	71.5	21012	0.34%	2.88%
Mar-03	347.38	21948	1.58%	9.46%
Apr-03	93.8	20604	0.46%	4.78%
May-03	15.86	20868	0.08%	0.87%
Jun-03	3.92	21012	0.02%	0.21%
Jul-03	6.31	20844	0.03%	0.20%
Aug-03	61.05	20316	0.30%	3.58%
Sep-03	4.9	20316	0.02%	0.34%
Oct-03	6.61	20316	0.03%	0.34%
Nov-03	5.45	20220	0.03%	0.36%
Dec-03	10.22	20220	0.05%	0.48%
Jan-04	48.9	20220	0.24%	1.88%



Network Performance

NI-1 – Trunk Blocking

Purpose: Evaluates factors affecting completion of calls from Qwest end offices to CLEC end offices, compared with the completion of calls from Qwest end offices to other Qwest end offices, focusing on average busy-hour blocking percentages in interconnection or interoffice final trunks.	
Description: Measures the percentage of trunks blocking in interconnection and interoffice final trunks. <ul style="list-style-type: none"> • Includes blocking percentages on all direct final and alternate final interconnection and interoffice trunk groups that are in service during the reporting period, subject to exclusions specified below. 	
Reporting Period: One month	Unit of Measure: Percent Blockage
Reporting Comparisons: CLEC aggregate, individual CLEC, and Qwest Interoffice trunk blocking results.	Disaggregation Reporting: Statewide level. Reports the percentage of trunks blocking in interconnection final trunks, reported by: <ul style="list-style-type: none"> NI-1A Interconnection (LIS) trunks to Qwest tandem offices, with TGSR-related exclusions applied as specified below; NI-1B LIS trunks to Qwest end offices, with TGSR-related exclusions applied as specified below; NI-1C LIS trunks to Qwest tandem offices, without TGSR-related exclusions; NI-1D LIS trunks to other Qwest end offices, without TGSR-related exclusions.
Formula: $\left\{ \left[\sum (\text{Blockage in Final Trunk Group of Specified Type}) \times (\text{Number of Circuits in Trunk Group}) \right] \div (\text{Total Number of Final Trunk Circuits in all Final Trunk Groups}) \right\} \times 100$ <p>Explanation: Actual average percentage of trunk blockage is calculated by dividing the equivalent average number of trunk circuits blocking by the total number of trunk circuits in final trunks of the type being measured.</p>	
Exclusions: <u>For NI-1A and NI-1B only:</u> <ul style="list-style-type: none"> • Trunk groups, blocking in excess of one percent in the reporting period, for which: <ul style="list-style-type: none"> – A Trunk Group Service Request (TGSR)^{NOTES 1 & 2} has been issued in the reporting period; or – CLECs do not submit, within 20 calendar days of receiving a TGSR: <ul style="list-style-type: none"> a) Responsive ASRs (or have ASRs pending that are delayed for CLEC reasons^{NOTE 3}); b) Trouble Tickets; or c) Notification of traffic re-routing (as described in Note 1 below). <u>For NI-1A, NI-1B, NI-1C, and NI-1D:</u> <ul style="list-style-type: none"> • Trunk groups, blocking in excess of one percent in the reporting period, for which Qwest can identify, in time to incorporate in the regular reporting of this measurement, the cause as being attributable to: <ul style="list-style-type: none"> – Trunk group out-of-service conditions arising from cable cuts, severe weather, or force majeure circumstances, – The CLEC placing trunks in a “busy” condition. – Lack of interconnection facilities to fulfill LIS requests for which the CLEC did not provide a timely forecast to Qwest. (This portion of the exclusion is limited to being applied in (a) the month the LIS requests could not be fulfilled, due to lack of facilities, and (b) each month thereafter up to the month following facility availability OR up to five months after the month the LIS requests could not be fulfilled, whichever is sooner^{NOTE 4}); or – Isolated incidences of blocking, about which Qwest provides notification to the CLEC, that (a) are not recurring or persistent (affecting the same trunk groups), (b) do not warrant corrective action by CLEC or Qwest, and (c) thus, do not require an actionable TGSR. 	

NI-1 – Trunk Blocking (Continued)

- Trunk groups recently activated that have not been in service for a full “20-high-day, busy hour” review period.
- Toll trunks, non-final trunks, and trunks that are not connected to the public switched network.
- One-way trunks originating at CLEC end offices.
- Qwest official services trunks, local interoffice operator and directory assistance trunks, and local interoffice 911/E911 trunks.
- Records with invalid product codes.
- Records missing data essential to the calculation of the measurement per the PID.

Product Reporting:

LIS Trunks

Standard:

Where NI-1A \leq 1%: 1 %
 Where NI-1A $>$ 1%: Parity with Qwest Interoffice Trunks to tandems
 Where NI-1B \leq 1%: 1 %
 Where NI-1B $>$ 1%: Parity with Qwest Interoffice Trunks to end offices
 NI-1C and NI-1D: Diagnostic ^{NOTE 5}

Availability:

Available

Notes:

1. Qwest uses TGSRs to notify CLECs when trunk blocking exceeds standard thresholds or is determined to be persistent. To respond properly to TGSRs, a CLEC must (a) submit within 20 days ASRs to provide necessary trunk augmentations to avoid further blocking, (b) notify Qwest within 20 days that it is initiating a Trouble Report where Qwest traffic routing problems are causing the blocking referenced by the TGSR, or (c) notify Qwest that the CLEC will undertake its own re-routing of traffic within 20 days to alleviate the blocking.
2. The TGSR-related exclusion is applied in the month in which the TGSR is issued and in the month in which the above-specified 20-day response period ends. Thus, any trunk group excluded in one month will not be excluded in the next month, unless there is (a) a 20-day period following a TGSR ends in that month, (b) there is another TGSR applicable to the next month for the same trunk group or (c) an exception documented, in lieu of issuing a subsequent TGSR, where the CLEC's response to the previous TGSR indicated that, for its own reasons, it plans to take no action at any time to augment the trunk group.
3. CLEC delays are reflected by CLEC-initiated order supplements that move the due date later.
 - a) Qwest-initiated due date delays, including supplements made pursuant to Qwest requests to delay due dates, shall not be counted as CLEC delays in this measurement.
 - b) Qwest-initiated due date changes to earlier dates that the CLEC does not meet shall not be counted as a CLEC delay in this measurement unless the earlier dates were mutually agreed-upon.
 - c) CLEC delays (e.g., “customer not ready” in advance of a due date) that do not contribute to a Qwest-established due date being missed shall not be counted as a CLEC delay in this measurement.
4. The limitation on part (3) of this exclusion is intended to bound its applicability to a period of time that treats the unforecasted ASR as if it were, in effect, the first forecast for the facilities needed.
 - a) Given that forecast advance intervals are currently six months, this provision allows the exclusion to apply for no longer than that period of time.
 - b) Nevertheless, this limitation to the exclusion also recognizes that facilities may become available sooner and, if so, reduces the limitation accordingly. In that context, this limitation recognizes that, absent a CLEC forecast, Qwest still retains a responsibility to provide facilities for the ASR, although in a longer timeframe than for ASRs covered by forecasts. NI-1C and NI-1D will be reported for information purposes only, with no standard to be applied.
 - c) This limitation may change depending on the outcome of separate workshops dealing with issues of interconnection forecasting.
5. NI-1C and NI-1D will be reported for information purposes only, with no standard to be

NI-1 – Trunk Blocking (Continued)

	applied.
--	----------