

2017 Affiliated Interest Report for Torre Refuse & Recycling, LLC (G-260) d/b/a Sunshine Disposal & Recycling in accordance with WAC 480-70-079 (Redacted Version)

Torre Refuse & Recycling, LLC (TRR) shares common ownership and control with the following companies:

- Ada-Lin Waste Systems, Inc. (AWS)
- WSF, LLC (WSF)
- South Clayton Land Company, LLC (SCLC)
- Sunshine Recyclers, Inc. (SRI)
- Sunshine Disposal, Inc. (SDI) (wholly owned by Sunshine Recyclers, Inc.)

TRR provides the following services to AWS, SRI and SDI:

Equipment Repair, Management, Procurement, Facility, Accounting, and Customer Service.

The total amount paid by each entity for these combined services in 2017 was:

AWS: \$126,337  
SDI: \$229,012  
SRI: \$ [REDACTED]

These totals are determined through an allocation of actual usage of these services by the various entities.

These 3 companies also have loans due to or due from TRR as needed. Interest is paid at the bank's prime rate (currently 5.00%). The terms are perpetual. The balances at 12/31/2017 were as follows:

AWS payable to TRR: \$ 16,710  
TRR payable to SRI: \$ [REDACTED]  
TRR payable to SDI: \$ 151,912

WSF provides the following services to TRR:

Container maintenance and manufacturing and truck component purchasing. (\$ [REDACTED] in 2017)

SCLC provides the following services to TRR: Facility Rental (\$24,000 in 2017)

The following are the owners and officers of the related companies with affiliated transactions in excess of \$100,000:

Torre Refuse and Recycling, LLC

- Marc Torre, Managing Member (80% owner)
- Michael Torre, Member (20% owner)

WSF, LLC

- Marc Torre, Managing Member (95% owner)
- Michael Torre, Member (5% owner)

Ada-Lin Waste Systems, Inc.

Marc Torre, President (100% owner)  
 Michael Torre, Secretary/Treasurer

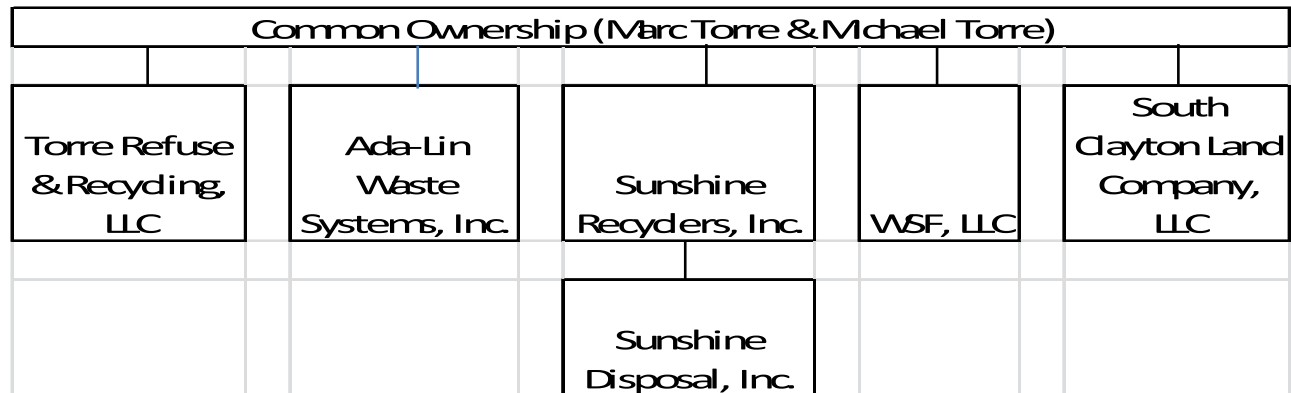
Sunshine Recyclers, Inc.

Marc Torre, President (100% owner)  
 Michael Torre, Vice President/Secretary/Treasurer

Sunshine Disposal, Inc. (100% owned by SRI)

Marc Torre, President  
 Michael Torre, Vice President/Secretary/Treasurer

The organization chart is as follows:



The following are financial statements for related in compliance with WAC 480-70-079(3)(A)

	Ada-Lin Waste Systems, Inc.	Sunshine Disposal, Inc.	Sunshine Recyclers, Inc.	WSF, LLC
<b>Balance Sheet</b>				
Current Assets	367,430	670,956		
Fixed Assets	267,565	828,662		
Other Assets	99,000	5,542		
Total Assets	<u>733,995</u>	<u>1,505,070</u>		
Liabilities	46,891	168,071		
Due Related Entity	(16,710)	151,912		
Equity	703,814	1,185,088		
Total Liab + Equity	<u>733,814</u>	<u>1,505,070</u>		
<b>Income Statement</b>				
Revenue	827,968	2,709,987		
Expense	655,208	2,628,130		
Net Income	172,760	81,857		