

VICINITY MAP  
NOT TO SCALE

# CITY OF GRANDVIEW

YAKIMA COUNTY

WASHINGTON


## OLD INLAND EMPIRE HIGHWAY IMPROVEMENTS

FEDERAL AID NO. STPUS 8052-(003)  
HLA PROJECT NO. 13134

MARCH 2023

### SHEET INDEX

SHEET 1	COVER SHEET
SHEET 2	LEGEND AND GENERAL NOTES
SHEETS 3-5	TYPICAL ROADWAY SECTIONS
SHEETS 6-7	TEMPORARY EROSION AND SEDIMENT CONTROL PLAN
SHEETS 8-14	DEMOLITION PLAN
SHEETS 15-26	PLAN AND PROFILE SHEETS
SHEETS 27-28	SIGNING, STRIPING, AND MAILBOX PLAN
SHEET 29	CLASS "A" SIGNING PLAN
SHEETS 30-32	TRAFFIC CONTROL PLANS
SHEET 33	ILLUMINATION PLAN
SHEETS 34-35	DRAINAGE STRUCTURE NOTES AND DETAILS
SHEETS 36-37	PROJECT DETAILS

 **DATUM ELEVATION**  
REBAR WITH RED CAP STAMPED 'HLA CONTROL'  
LOCATED AT THE WEST SIDE OF THE INTERSECTION  
OF 4TH STREET AND DIVISION STREET.



2803 River Road  
Yakima, WA 98902  
509.966.7000  
Fax 509.965.3800  
www.hlacivil.com



FEDERAL AID NO. STPUS 8052-(003)		JOB NUMBER: 13134	DATE: 03-22-23
		FILE NAMES: DRAWING: Sheets-ROAD PLAN: 13134	
		DESIGNED BY: MDU	
		ENTERED BY: MEM/OCK	
REVISION		DATE	

**CITY OF GRANDVIEW**  
OLD INLAND EMPIRE  
HIGHWAY IMPROVEMENTS

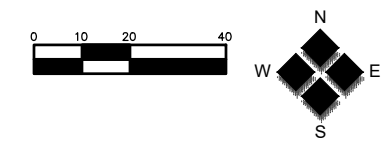
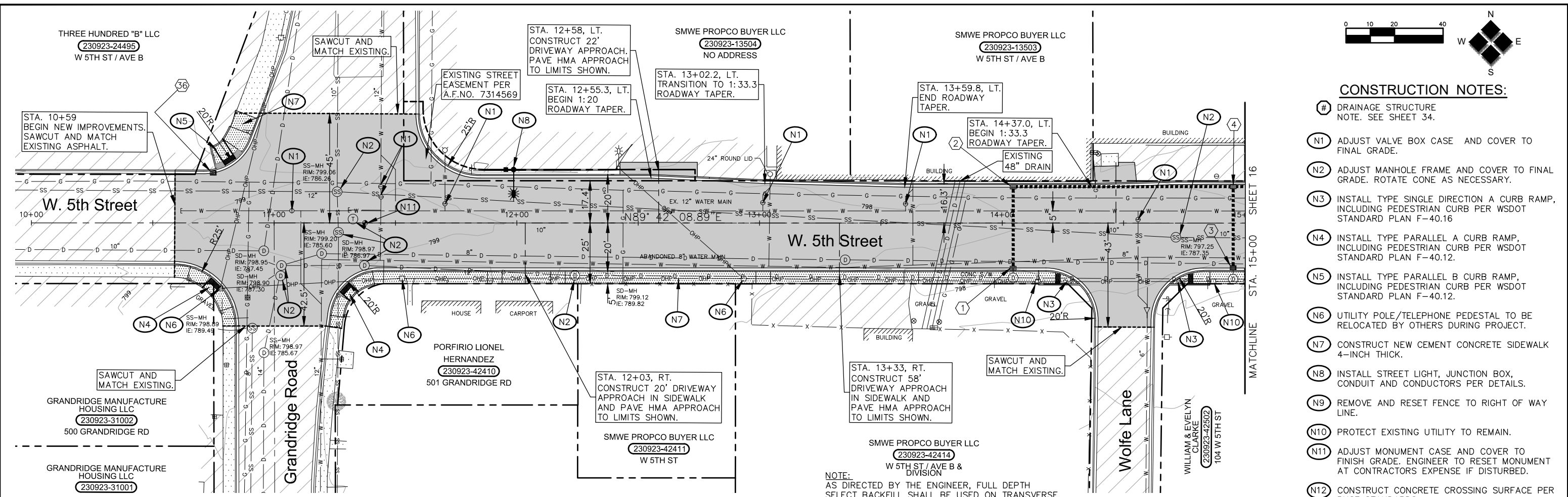
COVER SHEET

SHEET  
1  
OF  
37





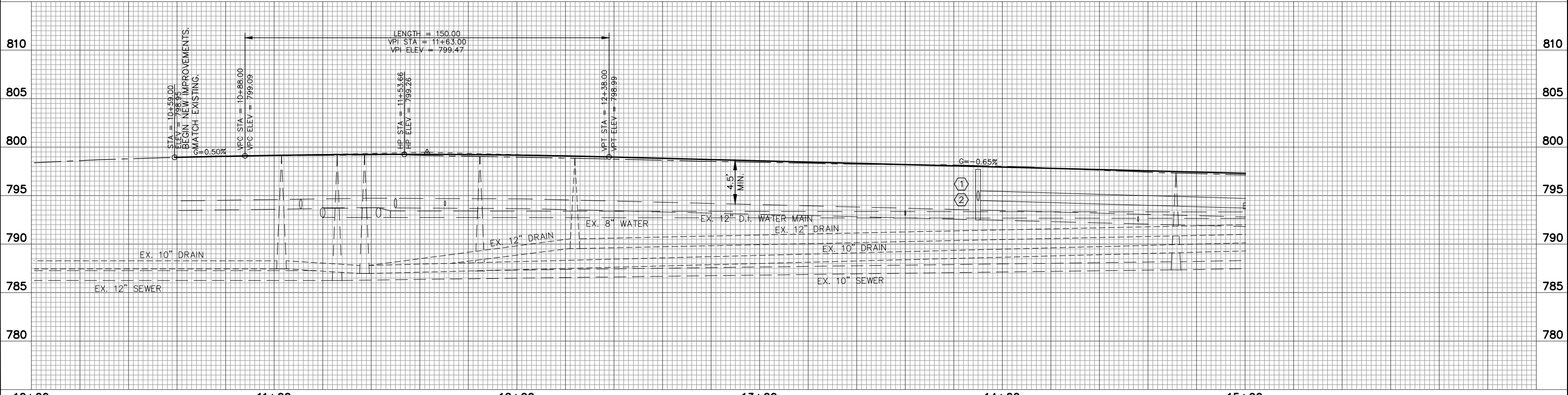




**CONSTRUCTION NOTES:**

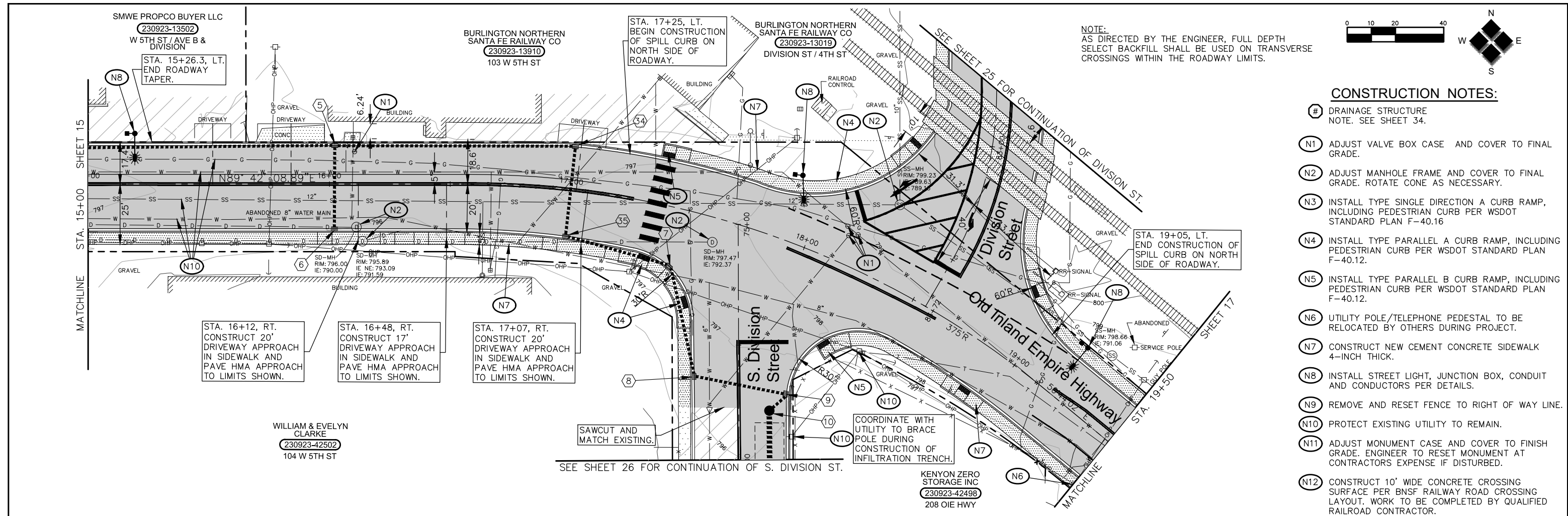
- # DRAINAGE STRUCTURE NOTE. SEE SHEET 34.
- N1 ADJUST VALVE BOX CASE AND COVER TO FINAL GRADE.
- N2 ADJUST MANHOLE FRAME AND COVER TO FINAL GRADE. ROTATE CONE AS NECESSARY.
- N3 INSTALL TYPE SINGLE DIRECTION A CURB RAMP, INCLUDING PEDESTRIAN CURB PER WSDOT STANDARD PLAN F-40.16
- N4 INSTALL TYPE PARALLEL A CURB RAMP, INCLUDING PEDESTRIAN CURB PER WSDOT STANDARD PLAN F-40.12.
- N5 INSTALL TYPE PARALLEL B CURB RAMP, INCLUDING PEDESTRIAN CURB PER WSDOT STANDARD PLAN F-40.12.
- N6 UTILITY POLE/TELEPHONE PEDESTAL TO BE RELOCATED BY OTHERS DURING PROJECT.
- N7 CONSTRUCT NEW CEMENT CONCRETE SIDEWALK 4-INCH THICK.
- N8 INSTALL STREET LIGHT, JUNCTION BOX, CONDUIT AND CONDUCTORS PER DETAILS.
- N9 REMOVE AND RESET FENCE TO RIGHT OF WAY LINE.
- N10 PROTECT EXISTING UTILITY TO REMAIN.
- N11 ADJUST MONUMENT CASE AND COVER TO FINISH GRADE. ENGINEER TO RESET MONUMENT AT CONTRACTORS EXPENSE IF DISTURBED.
- N12 CONSTRUCT CONCRETE CROSSING SURFACE PER BNSF STANDARDS.

NOTE:  
AS DIRECTED BY THE ENGINEER, FULL DEPTH SELECT BACKFILL SHALL BE USED ON TRANSVERSE CROSSINGS WITHIN THE ROADWAY LIMITS.

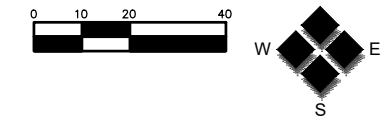


	2803 River Road Yakima, WA 98902 509.966.7000 Fax 509.965.3800 www.hlacivil.com			FEDERAL AID NO. STPUS 8052-(003)	JOB NUMBER: 13134	DATE: 03-22-23	<b>CITY OF GRANDVIEW</b> OLD INLAND EMPIRE HIGHWAY IMPROVEMENTS PLAN AND PROFILE, B.O.P. TO STA. 15+00	SHEET <b>15</b> OF <b>37</b>
				REVISION DATE	FILE NAMES: DRAWING: Sheets-ROAD PLAN: 13134	DESIGNED BY: MDU ENTERED BY: MEM/OCK		



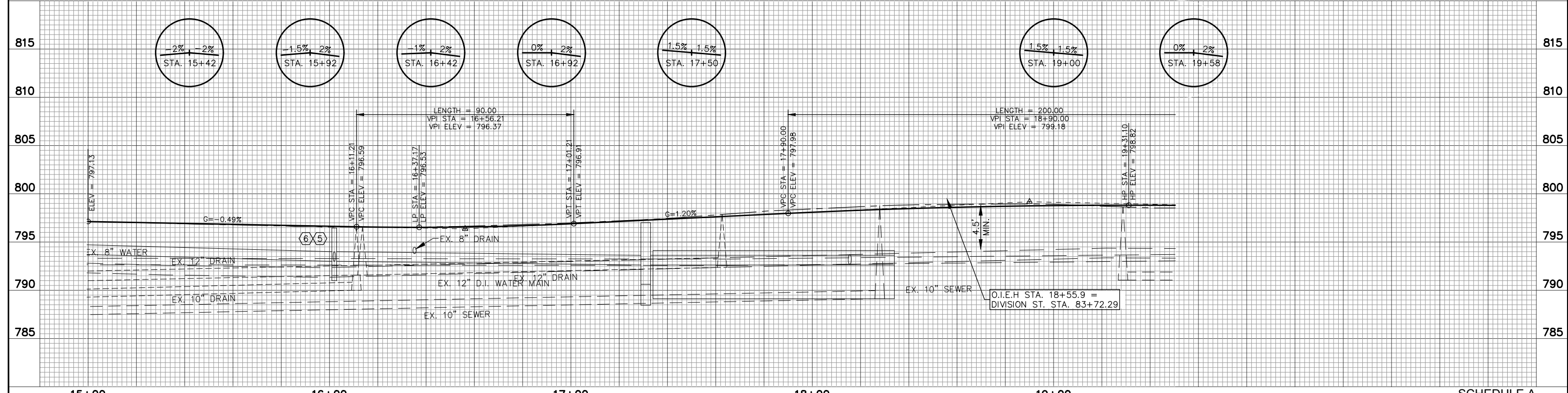


NOTE:  
AS DIRECTED BY THE ENGINEER, FULL DEPTH  
SELECT BACKFILL SHALL BE USED ON TRANSVERSE  
CROSSINGS WITHIN THE ROADWAY LIMITS.

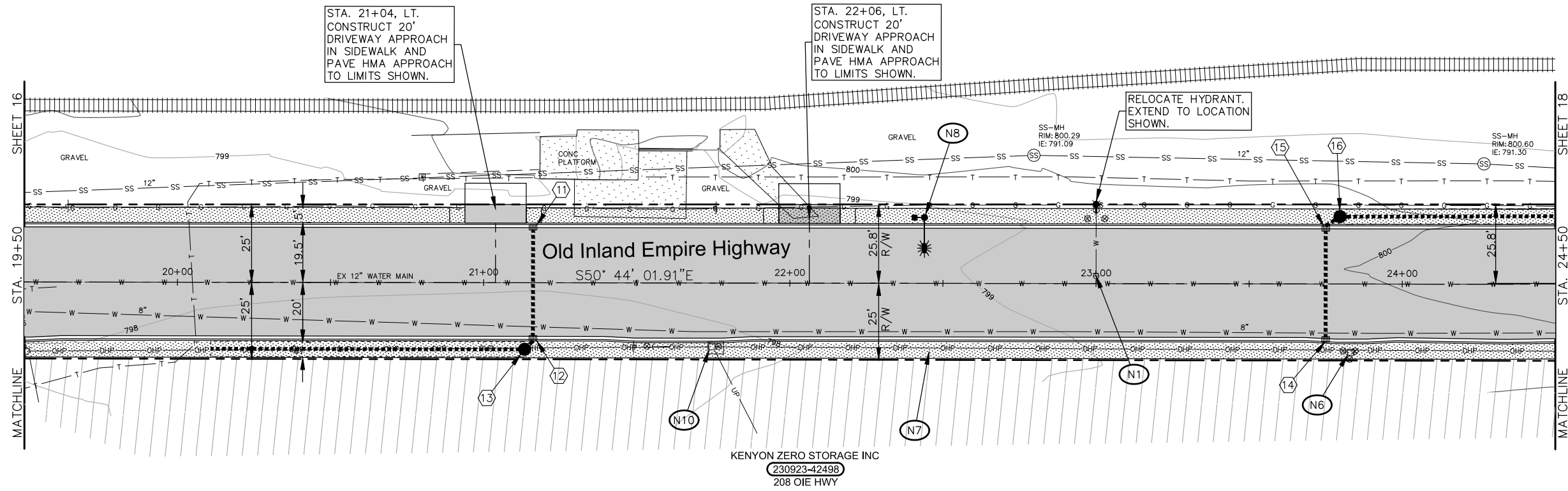


**CONSTRUCTION NOTES:**

- # DRAINAGE STRUCTURE  
NOTE. SEE SHEET 34.
- N1 ADJUST VALVE BOX CASE AND COVER TO FINAL GRADE.
- N2 ADJUST MANHOLE FRAME AND COVER TO FINAL GRADE. ROTATE CONE AS NECESSARY.
- N3 INSTALL TYPE SINGLE DIRECTION A CURB RAMP, INCLUDING PEDESTRIAN CURB PER WSDOT STANDARD PLAN F-40.16
- N4 INSTALL TYPE PARALLEL A CURB RAMP, INCLUDING PEDESTRIAN CURB PER WSDOT STANDARD PLAN F-40.12.
- N5 INSTALL TYPE PARALLEL B CURB RAMP, INCLUDING PEDESTRIAN CURB PER WSDOT STANDARD PLAN F-40.12.
- N6 UTILITY POLE/TELEPHONE PEDESTAL TO BE RELOCATED BY OTHERS DURING PROJECT.
- N7 CONSTRUCT NEW CEMENT CONCRETE SIDEWALK 4-INCH THICK.
- N8 INSTALL STREET LIGHT, JUNCTION BOX, CONDUIT AND CONDUCTORS PER DETAILS.
- N9 REMOVE AND RESET FENCE TO RIGHT OF WAY LINE.
- N10 PROTECT EXISTING UTILITY TO REMAIN.
- N11 ADJUST MONUMENT CASE AND COVER TO FINISH GRADE. ENGINEER TO RESET MONUMENT AT CONTRACTORS EXPENSE IF DISTURBED.
- N12 CONSTRUCT 10' WIDE CONCRETE CROSSING SURFACE PER BNSF RAILWAY ROAD CROSSING LAYOUT. WORK TO BE COMPLETED BY QUALIFIED RAILROAD CONTRACTOR.



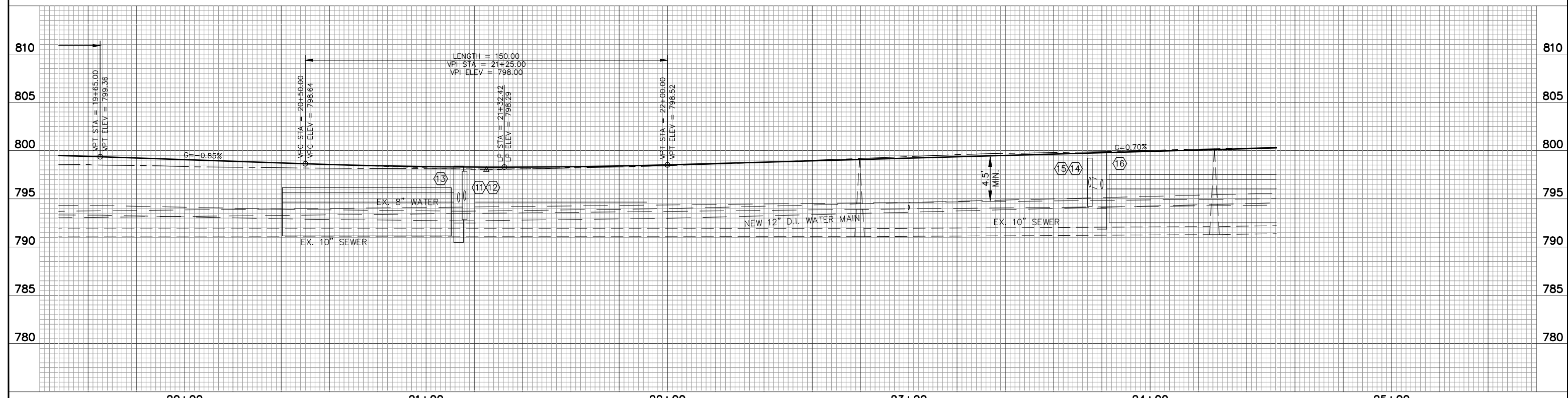
15+00	16+00	17+00	18+00	19+00	<b>SCHEDULE A</b>
				<b>FEDERAL AID NO. STPUS 8052-(003)</b> JOB NUMBER: 13134 DATE: 03-22-23 FILE NAMES: DRAWING: Sheets-ROAD PLAN: 13134 DESIGNED BY: MDU ENTERED BY: MEM/OCK	
2803 River Road Yakima, WA 98902 509.966.7000 Fax 509.965.3800 www.hlacivil.com				<b>CITY OF GRANDVIEW</b> OLD INLAND EMPIRE HIGHWAY IMPROVEMENTS PLAN AND PROFILE, STA. 15+00 TO 19+50	
					SHEET <b>16</b> OF <b>37</b>



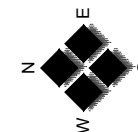
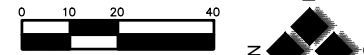
**CONSTRUCTION NOTES:**

- # DRAINAGE STRUCTURE  
NOTE. SEE SHEET 34.
- N1 ADJUST VALVE BOX CASE AND COVER TO FINAL GRADE.
- N2 ADJUST MANHOLE FRAME AND COVER TO FINAL GRADE. ROTATE CONE AS NECESSARY.
- N3 INSTALL TYPE SINGLE DIRECTION A CURB RAMP, INCLUDING PEDESTRIAN CURB PER WSDOT STANDARD PLAN F-40.16
- N4 INSTALL TYPE PARALLEL A CURB RAMP, INCLUDING PEDESTRIAN CURB PER WSDOT STANDARD PLAN F-40.12.
- N5 INSTALL TYPE PARALLEL B CURB RAMP, INCLUDING PEDESTRIAN CURB PER WSDOT STANDARD PLAN F-40.12.
- N6 UTILITY POLE/TELEPHONE PEDESTAL TO BE RELOCATED BY OTHERS DURING PROJECT.
- N7 CONSTRUCT NEW CEMENT CONCRETE SIDEWALK 4-INCH THICK.
- N8 INSTALL STREET LIGHT, JUNCTION BOX, CONDUIT AND CONDUCTORS PER DETAILS.
- N9 REMOVE AND RESET FENCE TO RIGHT OF WAY LINE.
- N10 PROTECT EXISTING UTILITY TO REMAIN.
- N11 ADJUST MONUMENT CASE AND COVER TO FINISH GRADE. ENGINEER TO RESET MONUMENT AT CONTRACTORS EXPENSE IF DISTURBED.
- N12 CONSTRUCT CONCRETE CROSSING SURFACE PER BNSF STANDARDS.

NOTE:  
AS DIRECTED BY THE ENGINEER, FULL DEPTH SELECT BACKFILL SHALL BE USED ON TRANSVERSE CROSSINGS WITHIN THE ROADWAY LIMITS.

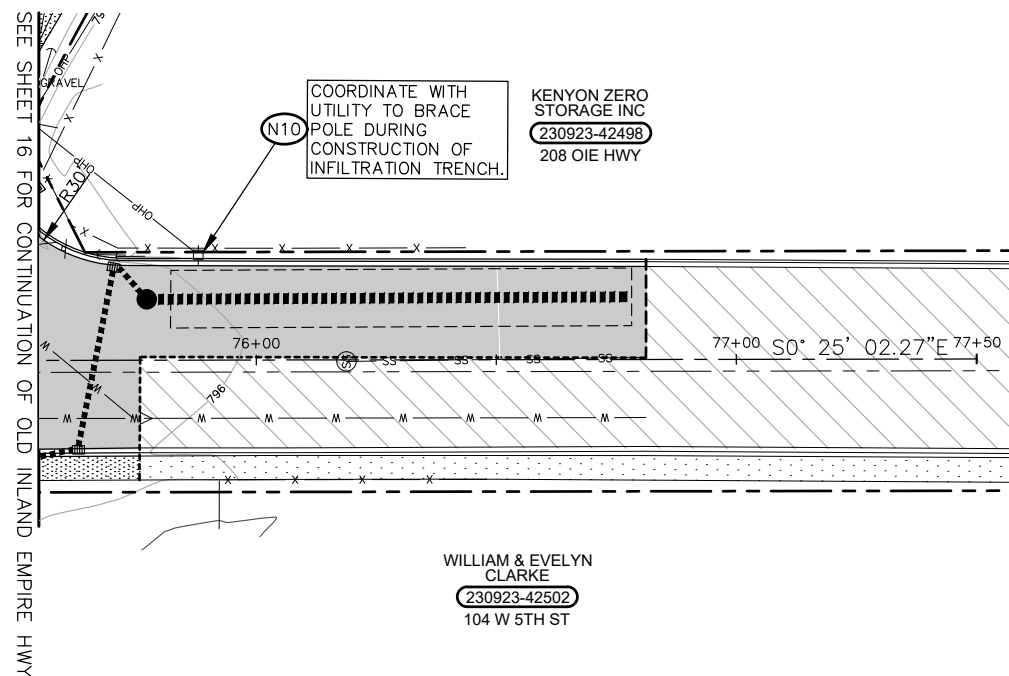


20+00	21+00	22+00	23+00	24+00	25+00
2803 River Road Yakima, WA 98902 509.966.7000 Fax 509.965.3800 www.hlacivil.com		FEDERAL AID NO. STPUS 8052-(003)		JOB NUMBER: 13134    DATE: 03-22-23 FILE NAMES: DRAWING: Sheets-ROAD PLAN: 13134	
		DESIGNED BY: MDU ENTERED BY: MEM/OCK		<b>CITY OF GRANDVIEW</b> OLD INLAND EMPIRE HIGHWAY IMPROVEMENTS	
				PLAN AND PROFILE, STA. 19+50 TO STA. 24+50	
				REVISION	DATE
				SHEET	17
				OF	37

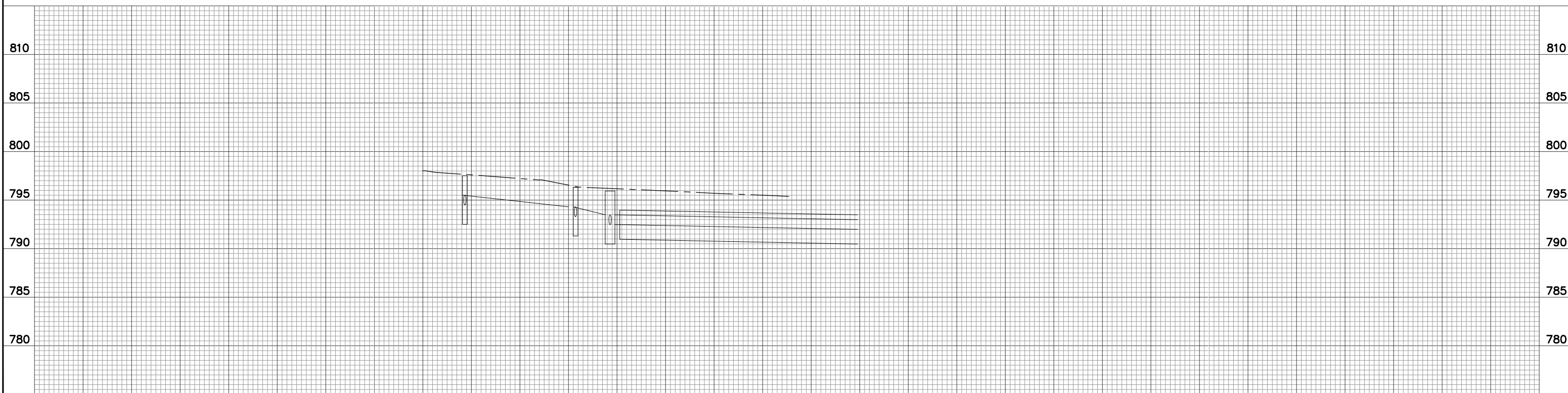


**CONSTRUCTION NOTES:**

- # DRAINAGE STRUCTURE  
NOTE. SEE SHEET 31.
- N1 ADJUST VALVE BOX CASE AND COVER TO FINAL GRADE.
- N2 ADJUST MANHOLE FRAME AND COVER TO FINAL GRADE. ROTATE CONE AS NECESSARY.
- N3 INSTALL TYPE SINGLE DIRECTION A CURB RAMP, INCLUDING PEDESTRIAN CURB PER WSDOT STANDARD PLAN F-40.16
- N4 INSTALL TYPE PARALLEL A CURB RAMP, INCLUDING PEDESTRIAN CURB PER WSDOT STANDARD PLAN F-40.12.
- N5 INSTALL TYPE PARALLEL B CURB RAMP, INCLUDING PEDESTRIAN CURB PER WSDOT STANDARD PLAN F-40.12.
- N6 UTILITY POLE/TELEPHONE PEDESTAL TO BE RELOCATED BY OTHERS DURING PROJECT.
- N7 CONSTRUCT NEW CEMENT CONCRETE SIDEWALK 4-INCH THICK.
- N8 INSTALL STREET LIGHT, JUNCTION BOX, CONDUIT AND CONDUCTORS PER DETAILS.
- N9 REMOVE AND RESET FENCE TO RIGHT OF WAY LINE.
- N10 PROTECT EXISTING UTILITY TO REMAIN.
- N11 ADJUST MONUMENT CASE AND COVER TO FINISH GRADE. ENGINEER TO RESET MONUMENT AT CONTRACTORS EXPENSE IF DISTURBED.

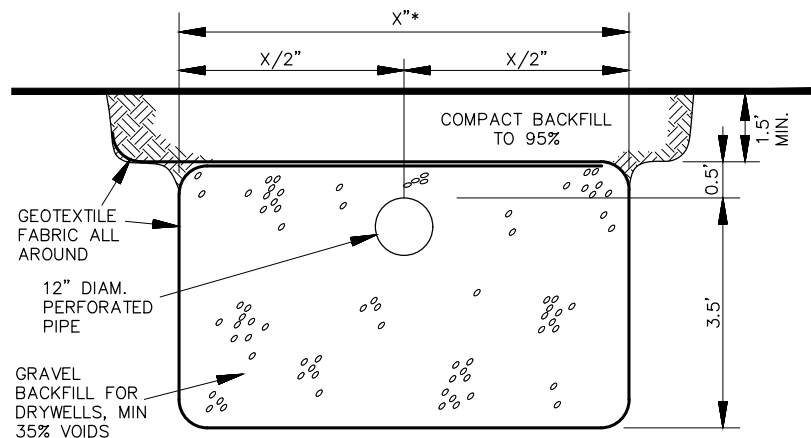


NOTE:  
AS DIRECTED BY THE ENGINEER, FULL DEPTH  
SELECT BACKFILL SHALL BE USED ON TRANSVERSE  
CROSSINGS WITHIN THE ROADWAY LIMITS.



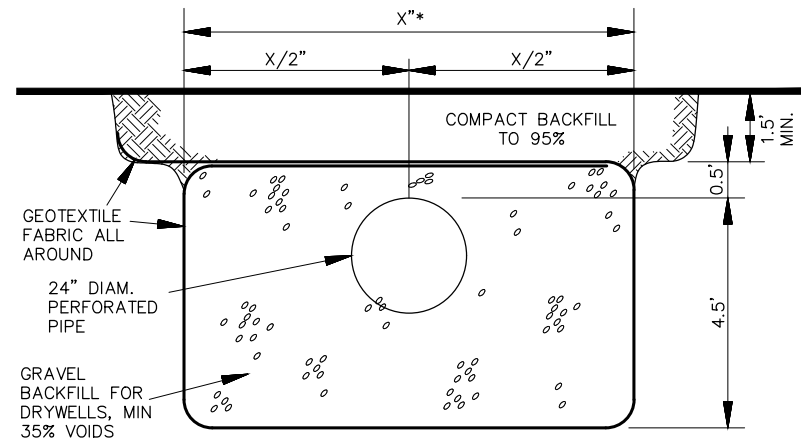
	2803 River Road Yakima, WA 98902 509.966.7000 Fax 509.965.3800 www.hlacivil.com			FEDERAL AID NO. STPUS 8052-(003)	JOB NUMBER: 13134	DATE: 03-22-23	<b>CITY OF GRANDVIEW</b> OLD INLAND EMPIRE HIGHWAY IMPROVEMENTS PLAN AND PROFILE, STA. B.O.P. TO E.O.P.	SHEET <b>26</b> OF <b>37</b>
				REVISION	DATE	FILE NAMES: DRAWING: Sheets-ROAD PLAN: 13134		





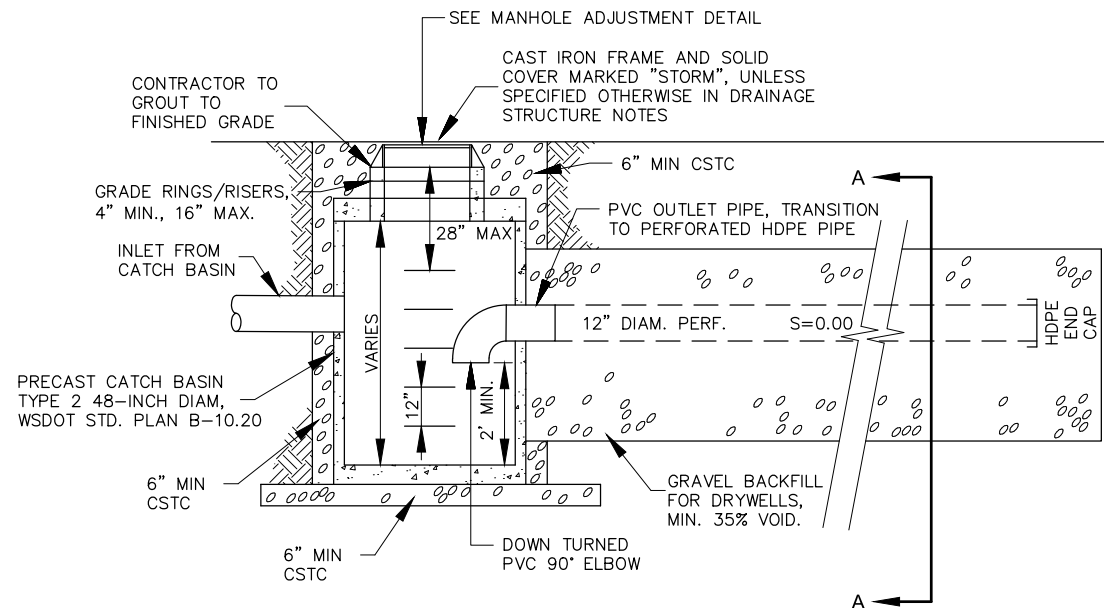
**SECTION A-A**

\*SEE CONTRACT PLANS AND DRAINAGE STRUCTURE TABLE



**SECTION A-A**

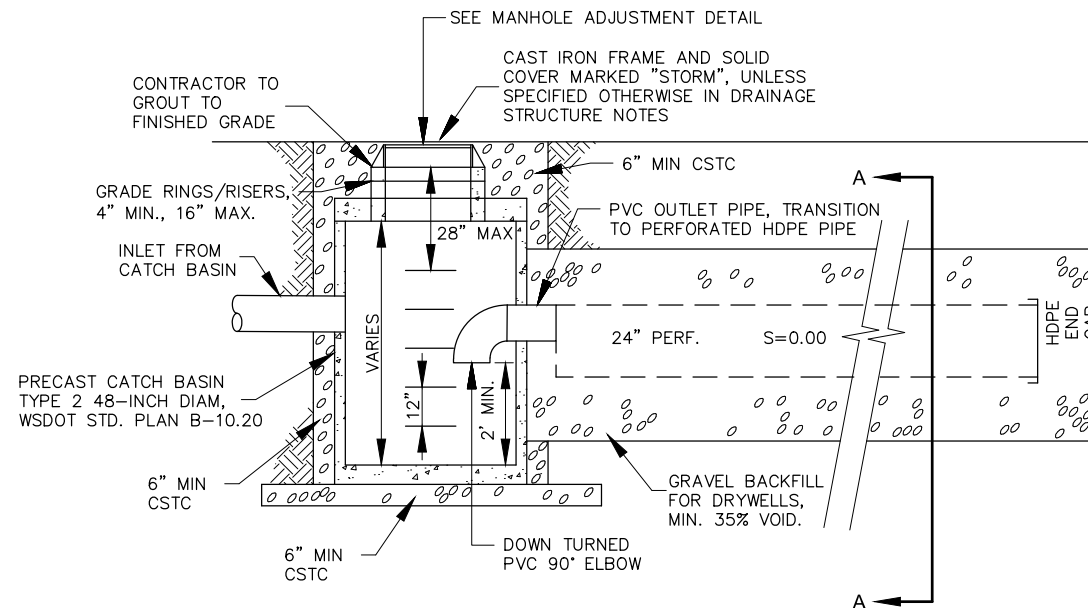
\*SEE CONTRACT PLANS AND DRAINAGE STRUCTURE TABLE



**PLAN**

- NOTES:  
 1. SEE DRAINAGE STRUCTURE NOTES FOR IE'S OF PIPES.  
 2. SEE DRAINAGE STRUCTURE NOTES AND PLAN SHEETS FOR ORIENTATION AND TRENCH LENGTH.

**1.1 INFILTRATION SYSTEM DETAIL**  
 NOT TO SCALE



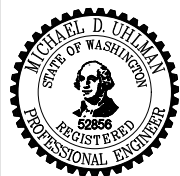
**PLAN**

- NOTES:  
 1. SEE DRAINAGE STRUCTURE NOTES FOR IE'S OF PIPES.  
 2. SEE DRAINAGE STRUCTURE NOTES AND PLAN SHEETS FOR ORIENTATION AND TRENCH LENGTH.

**1.2 INFILTRATION SYSTEM DETAIL**  
 NOT TO SCALE



2803 River Road  
 Yakima, WA 98902  
 509.966.7000  
 Fax 509.965.3800  
 www.hlacivil.com



FEDERAL AID NO. STPUS 8052-(003)		JOB NUMBER: 13134	DATE: 03-22-23
		FILE NAMES: DRAWING: Sheets-ROAD	
		PLAN: 13134	
DESIGNED BY: MDU			
ENTERED BY: MEM/OCK			
REVISION	DATE		

**CITY OF GRANDVIEW**  
 OLD INLAND EMPIRE  
 HIGHWAY IMPROVEMENTS

**DRAINAGE STRUCTURE NOTES AND DETAILS**

SHEET  
**35**  
 OF  
**37**



