



Department of Community Development
 Planning Division
 301 Yakima St, Suite 100
 Wenatchee, WA 98801

State Of WASH.
 UTIL. AND TRANSP.
 COMMISSION

01/09/23 15:46:47

Received
 Records Management

December 15, 2022

To whom it may concern:

The Wenatchee City Council recently approved an annexation that brought property located in unincorporated Chelan County into the City of Wenatchee. The annexation was completed by Ordinance Number 2022-32. **The effective date is February 13, 2023.**

Parcel number and associated address assigned to the site are listed below:

232033310900 – 1425 Maple St, Wenatchee, WA 98801

On the opposite side of this letter, you will find a map of the annexation area. A copy of the Ordinance, including the legal description, can be provided upon request. In accordance with RCW35A.14.801, you have 60 days from receipt of this notice to make the necessary changes to your records as it pertains to the remittance of utility taxes to the City of Wenatchee. If your utility has a city tax imposed upon users that differs from the rate imposed on Chelan County residents, please take this opportunity to make the necessary changes.

In an effort to ensure your records reflect the most up to date city boundary, the Washington State Office of Financial Management (OFM) has established an online annexation tracking system. This tracking system can be accessed at <http://www.ofm.wa.gov/pop/annex/cats/default.asp> and contains maps and legal descriptions for annexations of all jurisdictions within Washington State occurring since 2009.

Please contact me, at (509) 888-3253 or by email at mparsons@wenatcheewa.gov if you have questions.

Thank you for your assistance in this matter.

Sincerely,
 Matt Parsons, AICP
 Senior Planner
 Community Development Department
 City of Wenatchee

RECEIVED
 RECORDS MANAGEMENT
 JAN 09 2023
 STATE OF WASH
 UTIL. & TRANSP. COMMISSION

ORDINANCE NO. 2022-32

AN ORDINANCE, providing for the annexation of an unincorporated area containing one parcel located south of Maple St between Pershing St and Princeton Ave also known as the Jacoby Annexation, subject to the provisions of Ordinance No. 2007-34 and all subsequent amendments thereto.

WHEREAS, a petition to annex the real property hereinafter described was filed with the City Council of the City of Wenatchee, signed by owners representing 60% of the assessed valuation in the area for which annexation is petitioned, and

WHEREAS, the applicable zoning for the annexed property will be Residential High (RH) for the whole area and the overlay known as Mixed Residential Corridor (MRC) for the portion of the area extending 200 feet south of the right-of-way of Maple Street, as designated on the pre-annexation zoning map, and

WHEREAS, the City Council of the City of Wenatchee considered all factors relative to the proposed annexation, and

WHEREAS, the City Council of the City of Wenatchee held a public hearing on September 8, 2022, and

WHEREAS, the City Council of the City of Wenatchee approved Resolution 2022-23 providing for the Notice of Intention, and


WHEREAS, a Notice of Intention was submitted to the Washington State Boundary Review Board in and for the County of Chelan with the required fee on November 2, 2022, and

SECTION III

This Ordinance shall take effect from and after its passage on the later of sixty (60) days after publication of such Ordinance once in The Wenatchee World, the same being the official newspaper of the City of Wenatchee, and the Clerk is hereby directed to cause the same to be so publicized, or sixty (60) days from the date notice of the annexation is provided to the Chelan County Treasurer, Assessor, and light, power and gas distribution businesses.

PASSED BY THE CITY COUNCIL OF THE CITY OF WENATCHEE, at a regular meeting thereof, this 8th day of December, 2022.

CITY OF WENATCHEE, a Municipal Corporation

By: 
FRANK J. KUNTZ, Mayor

ATTEST:

By: 
TAMMY STANGER, City Clerk

APPROVED:

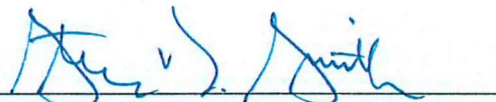
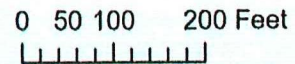
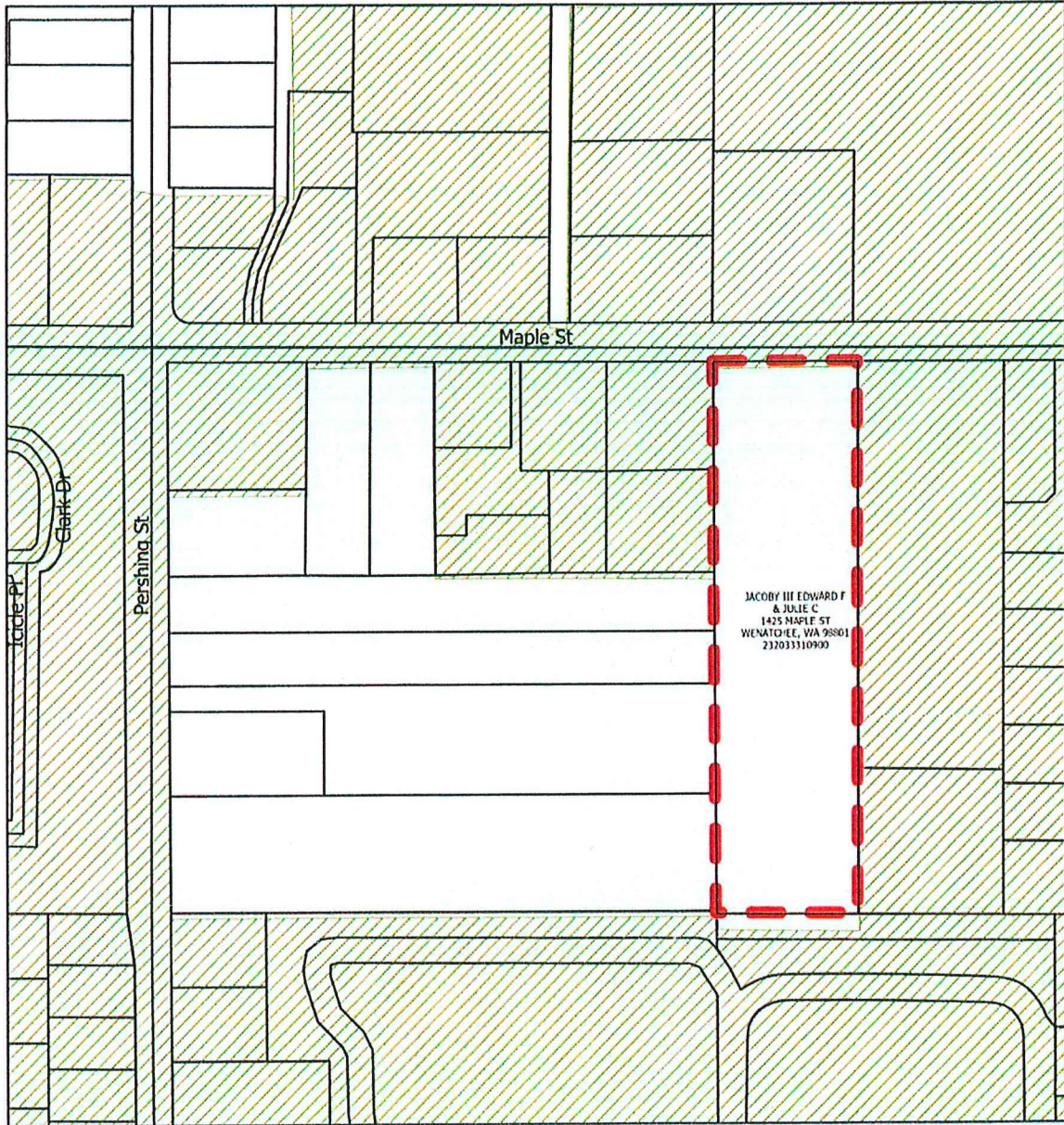
By: 
STEVE D. SMITH, City Attorney

Exhibit B

Jacoby Annexation Proposed Boundary



Legend

- Proposed Boundary
- Parcels
- City limits

- Urban Growth Area
- Streets

