



WASHINGTON WATER SERVICE

P.O. Box 336
Gig Harbor, WA 98335 Tel: (877) 408-4060

August 7, 2020

Via e-filing
Mark L. Johnson, Secretary
Washington Utilities and Transportation Commission
1300 South Evergreen Park Drive SW
Olympia, WA 98504-7250

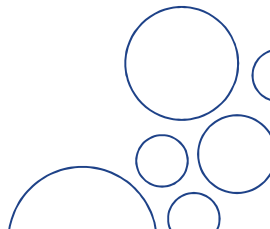
Re: Tariff Sheet Clean up (various sheets)

Dear Mr. Johnson,

The purpose of this filing is to revise various tariff sheets for Washington Water Service Company's (WWSC) tariff sheets. The following table summarizes the tariff sheets that are being revised. WWSC files these tariff changes pursuant to WAC 480-80-121 and respectfully requests Commission review and approval.

Received
Records Management
08/07/20 11:12
State Of WASH.
UTIL. AND TRANSP.
COMMISSION

Original Tariff Sheet No.	Revised Tariff Sheet No.	Description of Tariff/Rule	Reason for Revision
Second Revision of Sheet No. 3	Third Revision of Sheet No. 3	Table of Contents	Added Capital Improvement Surcharge Tariff pursuant to UW-141301
First Revision of Sheet No. 6	Second Revision of Sheet No. 6	Rule 8	revised language to define "potential customer"
First Revision of Sheet No. 10	Second Revision of Sheet No. 10	Rule 15	Added reference to Schedule 2.1
First Revision of Sheet No. 15	Second Revision of Sheet No. 15	Rule 26, Rule 27	Added reference to Schedule 2.1
Second Revision of Sheet No. 21	Third Revision of Sheet No. 21	Service Area	Added Cristalina pursuant to UW-141301
Original Sheet No. 30.2	First Revision of Sheet No. 30.2	General Facilities Charge	Revise charge for 1 inch meter (numbers were transposed)
Second Revision of Sheet No. 31	Third Revision of Sheet No. 31	Ready to Serve Service	Added reference to Schedule 2.1
Original Sheet No. 33	First Revision of Sheet No. 33	Residential Fire Sprinkler Service Installation	Added reference to Schedule 2.1; added clarifying language in condition 3
Original Sheet No. 35	First Revision of Sheet No. 35	Residential Fire Sprinkler Service Installation	Added reference to Schedule 2.1; deleted duplicative word





WASHINGTON WATER SERVICE

Original Tariff Sheet No.	Revised Tariff Sheet No.	Description of Tariff/Rule	Reason for Revision
Original Sheet No. 36	First Revision of Sheet No. 36	Residential Fire Sprinkler Service Installation	Added reference to Schedule 2.1
First Revision of Sheet No. 37	Second Revision of sheet No. 37	Fire Hydrant Installation	Added reference to Schedules 1.1 and 2.1
Third Revision of Sheet No. 38	Fourth Revision of Sheet No. 38	Service Connection Charge	Additional time to install service connection in condition 6
First Revision of Sheet No. 43	Second Revision of Sheet No. 43	Wholesale Water – City of Tacoma	Added footer; footer inadvertently excluded in previous filing
First Revision of Sheet No. 44	Second Revision of Sheet No. 44	Capital Improvement Surcharge	Added surcharge pursuant to UW-141301
N/A	Original Sheet No. 45	Ancillary Charges	Moved due to addition of Capital Improvement Surcharge

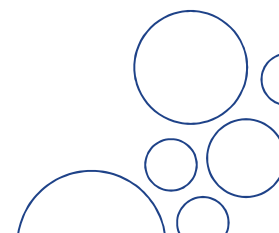
Discussion

Post-Acquisition Revisions

Upon completion of the asset purchase between WWSC and Rainer View Water Company (RVWC), it was discovered that WWSC's existing tariffs needed to be revised to reference tariffs that were recently added. Specifically, a reference to Schedule 2.1 was added to any tariff that referenced Schedule 2. Additionally, a correction to Schedule 3.1 was made after it was discovered that two numbers in the base charge for a 1 inch meter were transposed. The corrected amount (\$2,587) is lower than what was originally adopted, incorrect amount (\$2,857).

Combination of Cristalina LLC Tariff with WWSC Tariff

In Docket UW-141301, the Commission approved the transfer of assets of Cristalina LLC to WWSC. Paragraphs 34 and 35 of Order 01 ordered WWSC to begin providing water service to former Cristalina LLC customers under the rates, terms, and conditions in WWSC's tariff; and to continue to collect from former Cristalina LLC customers the surcharge the Commission Ordered in Order 01 in Docket UW-090516 under the terms and conditions specified in that order. In compliance with Paragraphs 34 and 35 of UW-141301, Order 01, WWSC filed an Adoption Notice with the Commission notifying the Commission that WWSC would be adopting Original Sheet No. 20 (Service Area) and First Revision Sheet No. 24 Cancelling Original Sheet No. 24 Cancelling Original Sheet No. 24 (Capital Improvement Surcharge) of Cristalina LLC's tariff. The adoption notice was filed on October 23, 2014 and became effective October 24, 2014. Due to an administrative oversight, the tariffs adopted from Cristalina LLC were never combined into WWSC's full tariff. The current filing serves as the consolidation of Cristalina LLC's previous tariffs with WWSC's existing tariff.





WASHINGTON WATER SERVICE

Other Tariff Revisions

Other revisions to language are proposed and described in the table above. The revisions are meant to add clarifying language or revise language that reflects WWSC's actual practices. Additional details regarding each revision are provided in the table above.

If there are any questions concerning this tariff update, please do not hesitate to contact me.

Sincerely,

A handwritten signature in black ink, appearing to read "Julian Gandara".

Julian Gandara
Regulatory Program Manager
(408) 472 – 5677
jgandara@calwater.com

