



PO BOX 609
MOUNT VERNON, OR 97865-0609
1-888-383-4132

Received
Records Management
07/22/20 14:12
State Of WASH.
UTIL. AND TRANSP.
COMMISSION

July 22, 2020

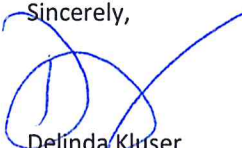
Mr. Mark L. Johnson, Executive Director and Secretary
Washington Utilities and Transportation Commission
621 Woodland Square Loop SE
Lacey, WA 98503

RE: Petition to Receive Support from the State Universal Communications Program
Program Year 2021

Pursuant to WAC 480-123-110 on behalf of Skyline Telecom ("Company"), attached herewith for filing with the Washington Utilities and Transportation Commission ("Commission") is the Company's Petition to receive support from the state universal communication services program established by RCW 80.36.650 ("Petition").

If the Commission has any questions regarding the filing, please feel free to contact me at 541-932-4411 or deedeek@otconnections.net.

Sincerely,



Delinda Kluser
Vice-Pres, Manager

1
2
3
4
5
6
7
8
9
10
11
12
13
14
15
16
17
18
19
20
21
22
23
24
25
26

**BEFORE THE WASHINGTON
UTILITIES AND TRANSPORTATION COMMISSION**

IN RE

PETITION OF SKYLINE TELECOM INC
TO RECEIVE SUPPORT FROM THE
UNIVERSAL SERVICE
COMMUNICATIONS PROGRAM

DOCKET NO.

PETITION FOR SUPPORT

COMES NOW Skyline Telecom Inc. (the "Company") and, pursuant to Chapter 480-123 of the Washington Administrative Code ("WAC"), including, but not limited to, WAC 480-123-110, hereby petitions the Washington Utilities and Transportation Commission (the "Commission") to receive support from the Universal Service Communications Program (the "Program") for the Program year 2021.

I. Demonstration of Eligibility under WAC 480-123-100

1. WAC 480-123-100(1)(a): The Company is a local exchange company as defined in WAC 480-120-021 that serves fewer than forty thousand access lines within the state.

- 1 2. WAC 480-123-100(1)(b): The Company is an incumbent local exchange carrier as defined
2 in 47 U.S.C. Sec. 251(h) The Company has been designated as an incumbent local
3 exchange carrier by the Federal Communications Commission.
- 4 3. WAC 480-123-100(1)(c): The Company offers basic residential and business exchange
5 telecommunications services as set forth in WAC 480-120-021 and RCW 80.36.630.
- 6 4. WAC 480-123-100(1)(d): The Company has established a plan, as described in WAC 480-
7 123-110, to provide, maintain or enhance broadband service (See II.4, below).
- 8 5. WAC 480-123-100(1)(e): The Company has been designated by the Commission as an
9 eligible telecommunications carrier ("ETC") for purposes of receiving federal universal
10 services support pursuant to 47 C.F.R. Part 54 Subpart D - Universal Service Support for
11 High Cost Areas with respect to the service areas for which the Company is seeking
12 Program support.

13 **II. Demonstration of Eligibility under WAC 480-123-110**

- 14 1. WAC 480-123-110(1)(a): The name of the legal entity that provides communications
15 services and is seeking Program support is as follows: Skyline Telecom Inc.
- 16 2. WAC 480-123-110(1)(b): A corporate organization chart showing the relationship between
17 the Company and affiliates as defined in RCW 80.16.010 is attached hereto as Exhibit 1. ¹
18 A detailed description of any transactions between the Company and the affiliates named in
19 Exhibit 1 recorded in the Company's operating accounts is attached hereto as Exhibit 2. ²
20

21
22
23 ¹ Pursuant to agreement with Commission Staff, Exhibit 1 is limited to those affiliates having transactions
with the Company that are to be identified in Exhibit 2.

24 ² Exhibit 2 also includes transactions between the Company and affiliates. Pursuant to agreement with the
25 Commission Staff, Exhibit 2 is limited to transactions other than employment compensation and benefits
26

- 1 3. WAC 480-123-110(1)(c): A service area map for the Company can be found at Sheet Nos.
2 49 and 63 of the Company's Tariff WN U-2.
- 3 4. WAC 480-123-110(1)(d): The Company's broadband plan to provide, maintain, or enhance
4 broadband services in its service area is attached hereto as Exhibit 3.
- 5 5. WAC 480-123-110(1)(f): A sworn statement by a Company officer certifying that the
6 Company complies with state and federal accounting, cost allocation, and cost adjustment
7 rules pertaining to incumbent local exchange carriers is attached as Exhibit 4.
- 8 6. WAC 480-123-110(1)(g): The number of residential local exchange access lines served by
9 the Company as of December 31, 2019, was 87. The number of residential local exchange
10 access lines served by the Company as of December 31, 2018, was 87. The number of
11 business local exchange access lines served by the Company as of December 31, 2019, was
12 15. The number of business local exchange access lines served by the Company as of
13 December 31, 2018, was 15. The number of broadband connections served by the Company
14 as of December 31, 2019, was 33. The number of broadband connections served by the
15 Company as of December 31, 2018, was 31. The unbundled monthly recurring rate charged
16 by the Company for residential local exchange access service on December 31, 2019, was
17 \$25.00 for Silverton and \$19.50 for Mt Hull. The unbundled monthly recurring rate charged
18 by the Company for residential local exchange access service on December 31,
19 2018, was \$25.00 for Silverton and \$19.50 for Mt Hull. The unbundled monthly rate
20 charged by the Company for single line business local exchange access service on December
21 31, 2019, was \$35.00 for Silverton and \$25.00 for MT Hull. The
22 unbundled monthly rate charged by the Company for single line business local exchange
23 access service on December 31, 2018, was \$35.00 for Silverton and \$25.00 for MT Hull.
24
25
26

1 The unbundled monthly rate charged for broadband service as of December 31, 2019, and as
2 of December 31, 2018, is set out in the attached Exhibit 5.

3 7. WAC 480-123-110(1)(h): The requested statements are attached as Exhibit 6.

4 8. WAC 480-123-110(1)(h)(i): A sworn statement by a Company officer certifying that the
5 Company is in compliance with the Federal Communications Commission's obligation for
6 deployment of broadband at speeds specified by the Federal Communications Commission
7 applicable to the Company and that the Company meets one of the eligibility criteria set out
8 in WAC 480-123-110(1)(j)(ii), (iii) or (iv) is attached at Exhibit 7.

9 9. All exhibits attached hereto are incorporated into this Petition as though fully set forth.

10
11 Respectfully submitted this 22nd day of July, 2020.

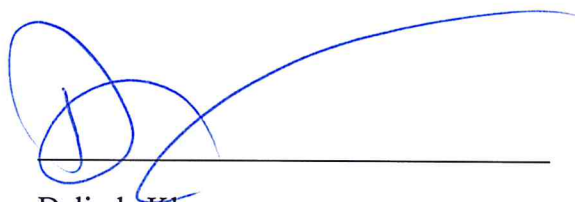
12
13 SKYLINE TELECOM INC

14 By 

15 Delinda Kluser
16 Vice-Pres, Manager

CERTIFICATION

I Delinda Kluser, an officer of the Company that is responsible for the Company's business and financial operations, hereby certify under penalty of perjury that the information and representations set forth in the Petition, above, are accurate and the Company has not knowingly withheld any information required to be provided to the Commission pursuant to the rules governing the Program.

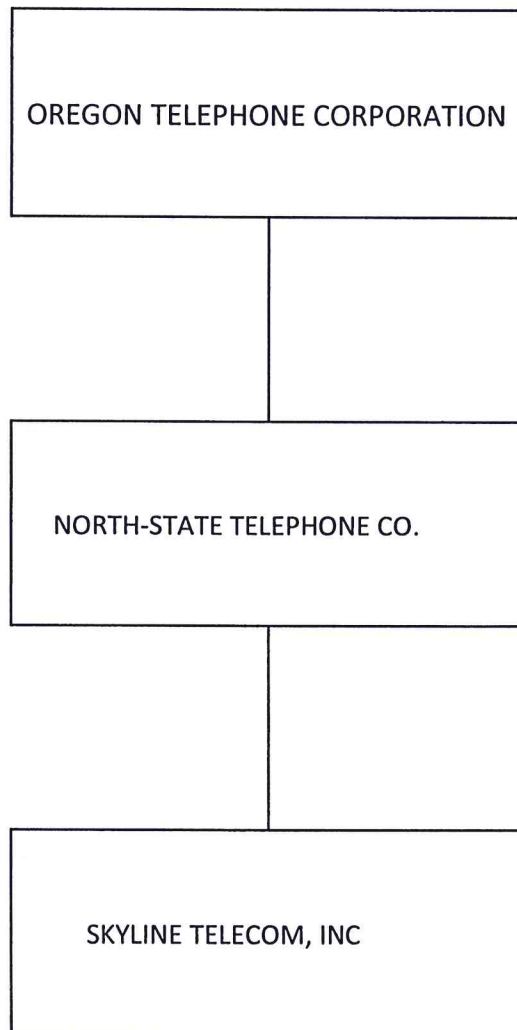


Delinda Kluser

Vice-Pres, Manager

EXHIBIT 1

CORPORATE ORGANIZATION CHART



PETITION OF SKYLINE TELECOM, INC TO
RECEIVE SUPPORT FROM THE UNIVERSAL
SERVICE COMMUNICATIONS PROGRAM –

EXHIBIT 1 – 1

EXHIBIT 2

AFFILIATED TRANSACTIONS

Affiliated Transactions

Oregon Telephone Corporation is the managing company for Skyline Telecom Inc. The business office is located in MT Vernon, OR. All billing, customer support, technical support and financial reporting are performed by the staff of Oregon Telephone Corporation. All labor expenses are direct coded to Skyline. A management agreement is in place which identifies how expenses are allocated between companies. Skyline currently has no employees on staff. All labor is charged through the management agreement. Skyline has a contract employee paid directly by the company for locates, trouble reports and installs.

At times it is necessary for the combo tech employed by North-State Telephone to assist with construction projects or cover for absences. This employee also directly codes labor and expenses to Skyline Telecom.

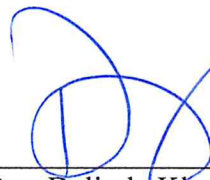
EXHIBIT 3

Broadband Plan

Skyline Telecom Inc. offers broadband services to both of its exchanges, Silverton and Mt Hull. Skyline incurs considerable monthly costs to maintain the backbone connection to the world for each of these areas. In fact, Skyline's broadband operations operate in a net loss position each year due to these costs. Skyline is however committed to continuing to provide quality broadband service to its subscribers and continues to maintain all plant necessary to provide these necessary services.

Beginning in 2020, Skyline has a three-phase fiber to the home build planned for the Mt Hull exchange. Phase 1 will begin in the late third quarter of 2020. Skyline has plans to construct fiber to fourteen subscribers. This will not only allow for a considerable increase in broadband speeds, but will also improve the reliability of service when compared to aging copper.

Phase 2 for the Mt Hull exchange will occur in 2021 and will bring fiber to the home to fifteen additional subscribers. Phase 3 is planned for 2022 and brings 9 additional subscribers fiber to the home. Skyline could offer speeds up to 1Gig for these fiber subscribers. Maps as well as costs for all three phases have been included as part of this exhibit.



By: Delinda Kluser
Title: Vice-Pres, Manager

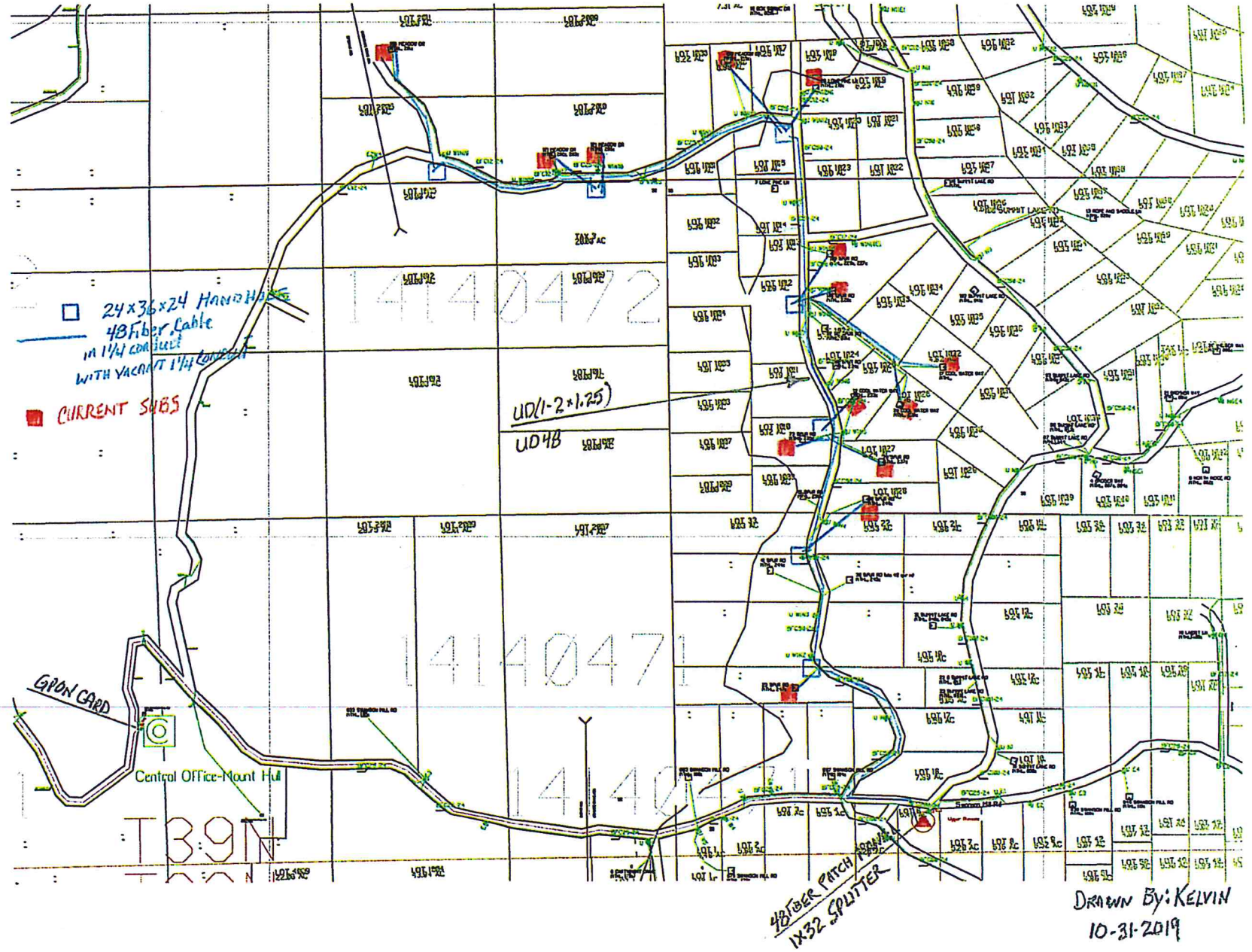
Mt Hull FTTH Phase 1

Unit	Number of Units	Labor	Material	Labor & Materials	Total Cost	
BM53F	6	\$15.000	\$28.500	\$43.50	\$261.00	marker signs
BM61(4)	0	\$30.000	\$0.000	\$30.00	\$0.00	directional bore
BM66(1.25)	0	\$1.500	\$2.500	\$4.00	\$0.00	bridge attachment
BM71	0	\$9.850	\$0.000	\$9.85	\$0.00	rock trench
BM83	0	\$45.000	\$10.000	\$55.00	\$0.00	riser conduit at nid
UO144	0	\$1.250	\$1.180	\$2.43	\$0.00	144 fiber
NID(4)	14	\$96.000	\$325.000	\$421.00	\$5,894.00	house terminal
NID(7)	0	\$0.000	\$0.000	\$0.00	\$0.00	multi dwelling/buisness terminal
HO1	0	\$3.380	\$2.000	\$5.38	\$0.00	fiber splice
HUO(96)	7	\$4.140	\$268.980	\$273.12	\$1,911.84	splice case
"HORSE SHOE"	0	\$7.560	\$65.000	\$72.56	\$0.00	
PM22	7	\$210.000	\$8.560	\$218.56	\$1,529.92	grounding for manholes
SEB021	4800	\$0.250	\$0.700	\$0.95	\$4,560.00	drop fiber
SEBV (1.00)	3200	\$1.000	\$0.490	\$1.49	\$4,768.00	drop conduit 1"
SEBV(1.25)	0	\$0.000	\$0.000	\$0.00	\$0.00	drop conduit 1 1/4"
UD(1X2-1.25)	8600	\$2.250	\$0.980	\$3.23	\$27,778.00	2-1 1/4 inch conduits
UHF(24x36x24)	6	\$211.000	\$457.930	\$668.93	\$4,013.58	larger handhole
UHF(24X13X18)	0	\$211.000	\$182.680	\$393.68	\$0.00	small handhole
UM-XB (30)	0	\$552.000	\$1,600.000	\$2,152.00	\$0.00	manhole
UO48	9200	\$0.250	\$0.544	\$0.79	\$7,300.20	48 fiber cable

TOTAL \$58,016.54

<u>Electronics</u>			
1 C7 OLTG card	\$	3,196.00	\$ 3,196.00
1 OIM SFP	\$	500.00	\$ 500.00
			<u>\$ 3,696.00</u>
<u>Fiber Frame</u>			
2 1x32 splitter	\$	86.00	\$ 172.00
144 SCAPC barrels	\$	0.46	\$ 66.24
12 SCAPC 12 fiber fanou	\$	14.00	\$ 168.00
1 panel	\$	150.00	\$ 150.00
0 rack	\$	-	\$ -
			<u>\$ 556.24</u>
			<u>\$ 4,252.24</u>

SKYLINE TELECOM MT HULL 2020 UPGRADES

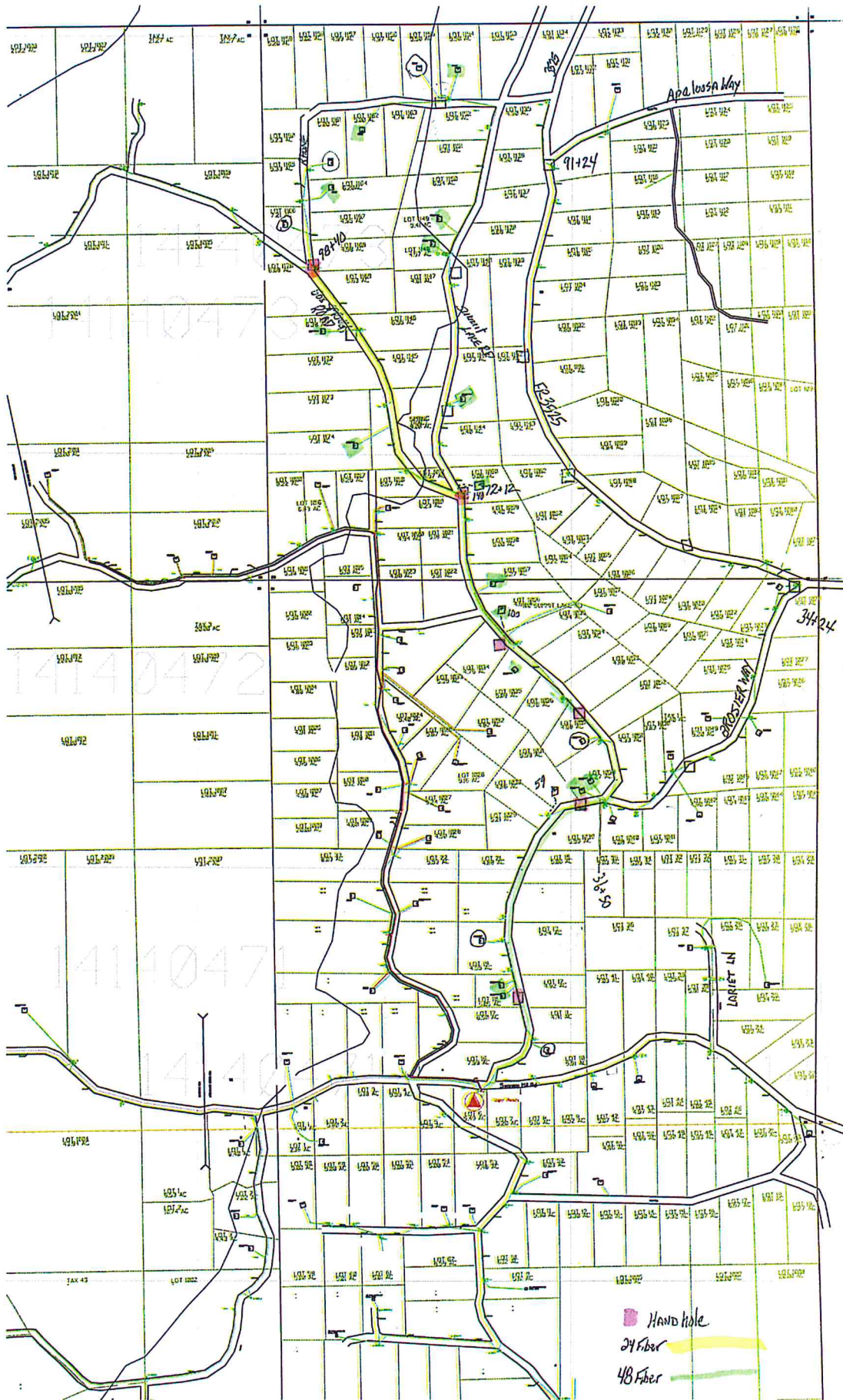


Mt Hull FTTH Phase 2

Unit	Number of Units	Labor	Material	Labor & Materials	Total Cost	
BM53F	7	\$15.000	\$28.500	\$43.50	\$304.50	marker signs
BM61(4)	0	\$30.000	\$0.000	\$30.00	\$0.00	directional bore
BM66(1.25)	0	\$1.500	\$2.500	\$4.00	\$0.00	bridge attachment
BM71	0	\$9.850	\$0.000	\$9.85	\$0.00	rock trench
BM83	15	\$45.000	\$10.000	\$55.00	\$825.00	riser conduit at nid
UO144	0	\$1.250	\$1.180	\$2.43	\$0.00	144 fiber
NID(4)	15	\$96.000	\$325.000	\$421.00	\$6,315.00	house terminal
NID(7)	0	\$0.000	\$0.000	\$0.00	\$0.00	multi dwelling/buisness terminal
HO1	0	\$3.380	\$2.000	\$5.38	\$0.00	fiber splice
HUO(96)	7	\$4.140	\$268.980	\$273.12	\$1,911.84	splice case
"HORSE SHOE"	0	\$7.560	\$65.000	\$72.56	\$0.00	
PM22	7	\$210.000	\$8.560	\$218.56	\$1,529.92	grounding for manholes
SEB02I	5250	\$0.250	\$0.700	\$0.95	\$4,987.50	drop fiber
SEBV (1.00)	3750	\$1.000	\$0.490	\$1.49	\$5,587.50	drop conduit 1"
SEBV(1.25)	0	\$0.000	\$0.000	\$0.00	\$0.00	drop conduit 1 1/4"
UD(1X2-1.25)	9840	\$2.250	\$0.980	\$3.23	\$31,783.20	2-1 1/4 inch conduits
UHF(24x36x24)	7	\$211.000	\$457.930	\$668.93	\$4,682.51	larger handhole
UHF(24X13X18)	0	\$211.000	\$182.680	\$393.68	\$0.00	small handhole
UM-XB (30)	0	\$552.000	\$1,600.000	\$2,152.00	\$0.00	manhole
UO24	2830	\$0.350	\$0.377	\$0.73	\$2,057.41	
UO48	7720	\$0.350	\$0.544	\$0.89	\$6,897.82	48 fiber cable

TOTAL \$66,882.20

<u>Electronics</u>		
0 C7 OLTG card	\$ 3,196.00	\$ -
1 OIM SFP	\$ 500.00	\$ 500.00
		<u>\$ 500.00</u>
<u>ONT</u>		
15 711 GE	\$ 235.00	\$ 3,525.00
15 UPS	\$ 81.00	\$ 1,215.00
		<u>\$ 4,740.00</u>
		<u>\$ 5,240.00</u>



Hand hole
 24 Fiber
 48 Fiber

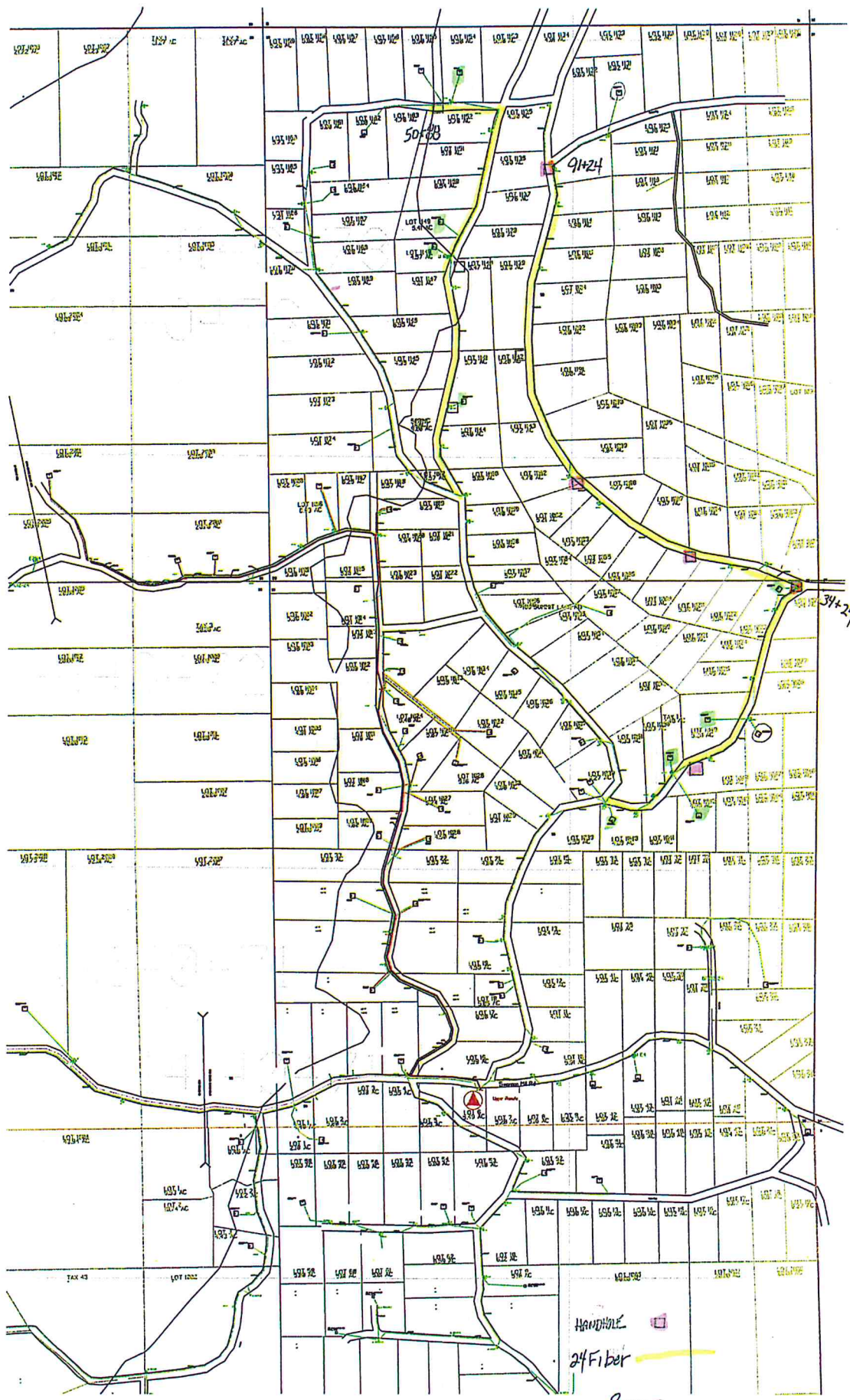
PHASE 2

Mt Hull FTTH Phase 3

Unit	Number of Units	Labor	Material	Labor & Materials	Total Cost	
BM53F	9	\$15.000	\$28.500	\$43.50	\$391.50	marker signs
BM61(4)	0	\$30.000	\$0.000	\$30.00	\$0.00	directional bore
BM66(1.25)	0	\$1.500	\$2.500	\$4.00	\$0.00	bridge attachment
BM71	0	\$9.850	\$0.000	\$9.85	\$0.00	rock trench
BM83	9	\$45.000	\$10.000	\$55.00	\$495.00	riser conduit at nid
UO144	0	\$1.250	\$1.180	\$2.43	\$0.00	144 fiber
NID(4)	9	\$96.000	\$325.000	\$421.00	\$3,789.00	house terminal
NID(7)	0	\$0.000	\$0.000	\$0.00	\$0.00	multi dwelling/buisness terminal
HO1	0	\$3.380	\$2.000	\$5.38	\$0.00	fiber splice
HUO(96)	9	\$4.140	\$268.980	\$273.12	\$2,458.08	splice case
"HORSE SHOE"	0	\$7.560	\$65.000	\$72.56	\$0.00	
PM22	9	\$210.000	\$8.560	\$218.56	\$1,967.04	grounding for manholes
SEB02I	3150	\$0.250	\$0.700	\$0.95	\$2,992.50	drop fiber
SEBV (1.00)	2250	\$1.000	\$0.490	\$1.49	\$3,352.50	drop conduit 1"
SEBV(1.25)	0	\$0.000	\$0.000	\$0.00	\$0.00	drop conduit 1 1/4"
UD(1X2-1.25)	14220	\$2.250	\$0.980	\$3.23	\$45,930.60	2-1 1/4 inch conduits
UHF(24x36x24)	6	\$211.000	\$457.930	\$668.93	\$4,013.58	larger handhole
UHF(24X13X18)	0	\$211.000	\$182.680	\$393.68	\$0.00	small handhole
UM-XB (30)	0	\$552.000	\$1,600.000	\$2,152.00	\$0.00	manhole
UO24	15120	\$0.350	\$0.377	\$0.73	\$10,992.24	
UO48	0	\$0.350	\$0.544	\$0.89	\$0.00	48 fiber cable

TOTAL \$76,382.04

<u>Electronics</u>		
0 C7 OLTG card	\$ 3,196.00	\$ -
1 OIM SFP	\$ 500.00	\$ 500.00
		<u>\$ 500.00</u>
<u>ONT</u>		
9 711 GE	\$ 235.00	\$ 2,115.00
9 UPS	\$ 81.00	\$ 729.00
		<u>\$ 2,844.00</u>
		<u>\$ 3,344.00</u>



HANDLING
24 Fiber

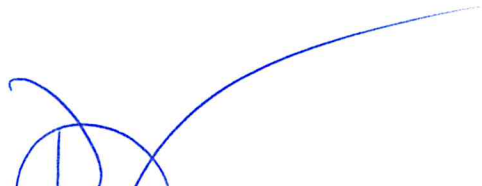
PHASE 3

EXHIBIT 4

Certification Relating to Accounting Standards

I, Delinda Kluser, am an officer of Skyline Telecom Inc. (the Company as set out in the Petition to which this is an Exhibit). Thereby, I certify that the Company complies with state and federal accounting, cost allocation, and cost adjustment rules pertaining an incumbent local exchange carrier for the period of time that the Company will receive support under the Petition to which this is an Exhibit.

This Certification is a sworn statement made under the penalty of perjury as set forth in RCW 9A.72.085 and is made this 22nd day of July, 2020.



By: Delinda Kluser
Title: Vice-Pres, Manager

ST (556 only)

BUNDLE PACKAGES - RESIDENCE ONLY (PHONE, INTERNET, TECH TALK & CUSTOM CALLING FEATURES)				
	VALUE	CLASSIC	IDEAL	EXCEPTIONAL
	6 MEG**	15 MEG	30 MEG	50 MEG
Bundle Includes:				
Residence Line				
TDN (optional)				
CWT				
Caller ID				
Tech Talk				
DSL				
TOTAL MONTHLY BUNDLE CHARGES (plus applicable taxes and surcharges)	75.95	85.95	90.95	95.95
Residential bundle - phone, internet, custom calling features & tech talk.				

ELINE (556 Residence only)				
	VALUE	CLASSIC	IDEAL	EXCEPTIONAL
	6 MEG**	15 MEG	30 MEG	50 MEG
Bundle Includes:				
Residence Line				
TDN (optional)				
DSL				
TOTAL MONTHLY BUNDLE CHARGES (plus applicable taxes and surcharges)	50.00	60.00	70.00	80.00
E-Line Bundle includes TDN, but customer can add LD and custom calling features.				
Residential customers only				

INTERNET PACKAGES (556 only)				
	6 MEG**	15 MEG	30 MEG	50 MEG
Bus - add \$10				
TOTAL MONTHLY CHARGES (plus applicable taxes and surcharges)	49.95	59.95	69.95	79.95

804 - GRANITE FALLS	
Residence Line	25.00
512K Meg (only package available)	39.95
TOTAL MONTHLY CHARGES (plus applicable taxes and surcharges)	64.95

EXHIBIT 5
 PETITION OF Skyline Telecom Inc.
 TO RECEIVE SUPPORT FROM THE UNIVERSAL
 SERVICE COMMUNICATIONS PROGRAM

	ST 556	ST 804
Service Order	10.00	8.00
Line Connection	15.00	8.00
Bundle Downgrade Charge**	10.00	8.00
Internet Activation	15.00	15.00
** Applicable anytime a customer downgrades to a bundle with less features or lower speeds.		
DSL **		
1 year contract w/ managed WiFi	0.00	0.00
No Contract w/ managed WiFi	40.00	40.00 Plus T/M charges
CPE Equipment		
	40.00	40.00
T & M charges will apply if customer requires tech's help in setting up CPE equipment or for any future internet trouble the customer might have that is not related to our service or trouble.		
**See Misc Charges for leased equipment options		
Premise Visits		
	40.00*	69.00**
*\$40.00 - flat charge		
*\$69.00 per hour - min. \$24.00 for 1st 15 minutes. Each add'l 15 minutes \$15.00		
Required Prepayments		
Deposit	75.00	75.00 Deposit is held for 1 year or until D/C
Phone	25.00	16.00
Internet	Min 15.00 plus applicable installation fees if any	
Pre-payments required for new or returning customers.		
No pre-payments required for existing customers who are upgrading to bundles, unless they require a high powered router, then equipment pre-payment would apply.		
** 556 (Mt. Hull) - 6 meg packages are only available to customers who can't get minimum 15 meg package. These customers are only to be offered their maximum speed available as per the MACC plant records or a tech.		
Misc Charges		
	MRC	MRC
Oretelco Mailbox	2.00	2.00
Static IP's - each	20.00	20.00
Managed WiFi Residential	10.95	10.95
Managed Wifi Business	14.95	14.95
	NRC	NRC
Non-returned/damaged lease router	250.00	250.00

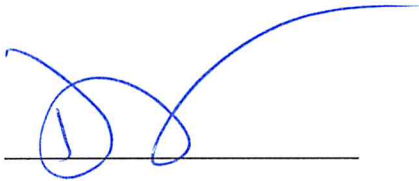
EXHIBIT 6

STATEMENT REQUIRED BY WAC 480-123-110(1)(h)

I, Delinda Kluser, am an officer of Skyline Telephone Company ("Skyline") and make this statement in that capacity. I hereby certify that if Skyline receives program support it will continue to provide communications services throughout its service territory in Washington for which it is seeking and receives program support for the entirety of the year for which Skyline is applying for support from the program. In addition, if Skyline receives program support, I certify that Skyline will continue to provide broadband services throughout its service territory in Washington, as it is or becomes available, during the entirety of the year in which Skyline is applying for support from the program.

This statement is provided under the penalty of perjury as set forth in RCW 9A.72.085.

By: _____



Its: _____

vice-pres, manager

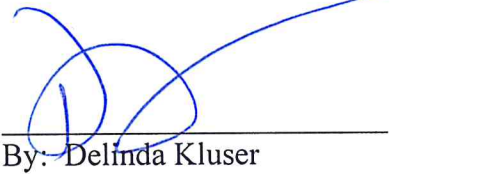
EXHIBIT 7

Certification of Eligibility

I, Delinda Kluser, am an officer of Skyline Telecom Inc. (the Company as set out in the Petition to which this is an Exhibit) and thereby certify that the Company is in compliance with the Federal Communications Commission's obligation for deployment of broadband at speeds specified by the Federal Communications Commission that apply to the Company.

For (j)(iii): Further, I certify that the Company has already met the Federal Communications Commission's total deployment obligations associated with federal high-cost program support as of the date of the Petition to which this is an Exhibit. Further, I certify that the Company has since January 1, 2018, deployed broadband to the number of locations that Washington Utilities and Transportation Commission has determined by order.

This Certification is a sworn statement made under the penalty of perjury as set forth in RCW 9A.72.085 and is made this 22nd day of July, 2020.



By: Delinda Kluser
Title: Vice-Pres, Manager