

NATIONAL RAILROAD PASSENGER CORPORATION

187 South Holgate, Bldg A Seattle, WA 98134



February 15, 2019

Washington Utility Transportation Committee
1300 S. Evergreen Park Drive SW
PO Box 47250
Olympia, WA 98504
Attn: Betty Young
Transportation Planning Specialist

Subject: Amtrak Seattle King St Coach Yard Locomotive Shop, Rule Exemption Request, WAC 480-60-050. Amtrak is requesting a track clearance exemption to WAC 480-60-050 regarding horizontal clearances as described below. **This request supersedes request dated 2-7-19**

Amtrak King Street Coach Yard tracks 200, 201, 202 and 203 as shown in the attached drawing(s). These tracks are to be established as NO Clearance for the following reasons.

- 1- Locomotive Service platforms 69.25 inches from Center of track
- 2- Drop table 71.5 inches from center of track
- 3- Drop table jacking pad 58.25 from center of track
- 4- Locomotive servicing handrail 66.5 inches from center of track
- 5- Water hydrants required to service trains – 80 inches from center of track

Numbered yellow diamonds with black outline on the attached drawing(s) indicate location and provide additional detail.

KSCY tracks 200, 201, 202 and 203 will be placarded with NO Clearance signs. Further, tracks 200, 201, and 202 are to be designated as mechanical tracks – train crews will require permission from the designated mechanical department representative in order to enter. KSCY tracks 200, 201 and 202 will be NOT be used by Sound Transit or BNSF crews. Amtrak general orders for Seattle KSCY will designate KSCY tracks 200, 201 and 202 will be listed as no clearance – no riding on side of equipment at any time. KSCY track 203 to be posted and listed as no side clearance on east side.

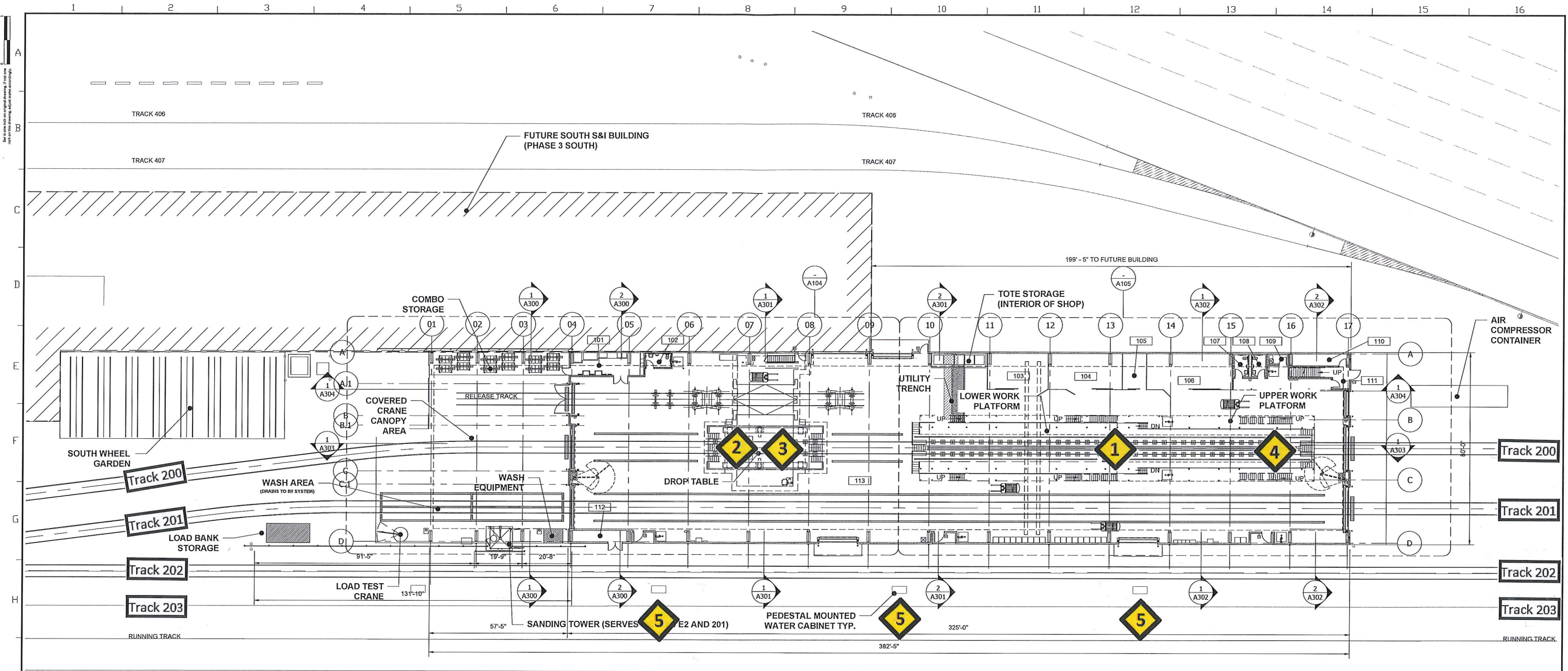
KSCY tracks 200, 201 and 202 designated Mechanical servicing tracks and will be used by Amtrak's mechanical department to service and repair locomotive and other passenger equipment. All moves are to be coordinated with Amtrak mechanical personnel.

If you need any additional information, I can be reached via phone at 206 396 4089 or email at radeked@amtrak.com. Thank you for your time and assistance with this matter.

Sincerely,

A handwritten signature in blue ink that reads "Daniel D. Radeke".

Daniel D. Radeke
Sr. Project Manager
Amtrak Engineering



NOTES:

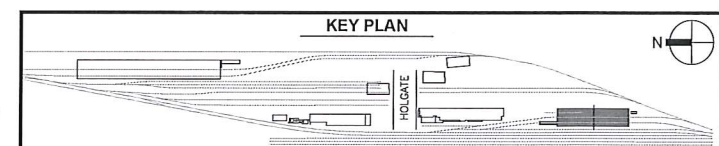
1. FUTURE SERVICE AND INSPECTION FACILITY WILL BE CONSTRUCTED TO THE EAST OF THE LOCOMOTIVE SHOP AND WILL ABUT A PORTION OF THE EAST FOUNDATION WALL.
2. DROP TABLE RAIL, PLATES, MOUNTING, EMBEDS AND BEAMS TO BE SUPPLIED AND INSTALLED BY DROP TABLE MANUFACTURER. DROP TABLE RAILS AND PLATES ARE SHOWN FOR REFERENCE ONLY, REFER TO MANUFACTURERS DRAWINGS, SPECIFICATIONS AND INSTRUCTIONS FOR PLACEMENT AND INSTALLATION.
3. DROP TABLE SUMP TO CONNECT TO EXISTING IW SYSTEM PIPING. REFER TO APPROPRIATE MECHANICAL DRAWINGS.
4. THIS DRAWING ILLUSTRATES CONDITIONS AT ELEVATION 100'-0" AND ABOVE OR BELOW. SOME CONDITIONS THAT OCCUR AT ELEVATION 100'-0" MAY ALSO BE ILLUSTRATED ON THE CORRESPONDING FLOOR PLAN.
5. TOP OF RAIL □ 100'-0" WHICH CORRESPONDS TO THE CIVIL T.O.R. AT 20.20'.

ROOM LEGEND:

A-101	ELECTRICAL ROOM	A-112	WATER & FIRE RISER
A-102	RESTROOM	A-113	MAINTENANCE AREA
S-1	STAIRS (TO DROP TABLE PIT)		
A-103	MACHINIST SHOP	A-200	STAIR
A-104	MACHINIST STORAGE AREA	A-201	UTILITY
A-105	TOOLING AREA	A-202	BREAK AREA
A-106	MACHINE PRESS AREA	A-203	HALL
A-107	RESTROOM	A-204	OFFICE
A-108	RESTROOM		
A-109	JANITOR		
A-110	TELECOM		
A-111	ENTRY		



SCALE : 1" = 20'-0"
0 10' 20' 40'

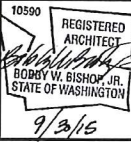


No.	Revisions	Date	By
7	100% SUBMITTAL	09/30/2015	GAC
6	90% SUBMITTAL	04/22/2015	GAC
5	60% SUBMITTAL	09/17/2014	GAC
4	45% SUBMITTAL	06/25/2014	GAC
2	30% SUBMITTAL	06/17/2011	BWB
1	15% SUBMITTAL	04/13/2011	BWB



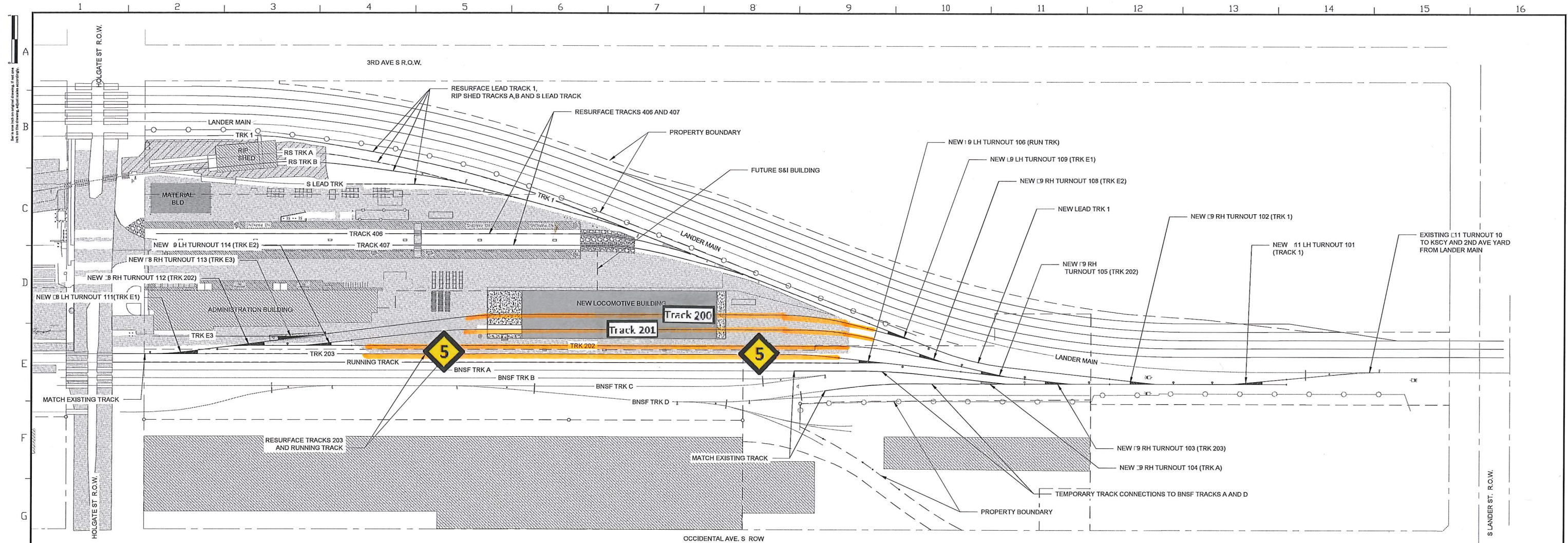
This material is owned by and is the sole and exclusive property of the National Railroad Passenger Corporation (Amtrak), Office of Engineering, and is supplied on a confidential basis solely for use in connection with the design and construction of Amtrak facilities and equipment. The reproduction, display, sale or other disposition of this document without the express written consent of the National Railroad Passenger Corporation, Office of Engineering, is prohibited.

Office of Chief Engineer
STRUCTURES
National Railroad Passenger Corporation
30th Street Station, Philadelphia, Pennsylvania 19104



SEATTLE WASHINGTON
AMTRAK PACIFIC NORTHWEST
BID PACKAGE 01 - LOCOMOTIVE SHOP
OVERALL FIRST FLOOR PLAN
Designed GAC Drawn GAC Checked BWB Date 04/22/2015
File No: C.TR.100057.0001
Work Elem. No: 273491
Sheet No. OF
A103

DATE PLOTTED: 10/06/2015 5:12:53 PM
FILE NAME: K:\p\Amtrak\14432020\03_Production Documents\01_2015\03_Construction Documents\BIF Package 01 - (Phase 0)\A103.dwg



BID PACKAGE 1 NEW TRACK SUMMARY	
TRACK □	APPROX. NEW TRACK
TRACK 1 (CONC TIES)	372 T.F.
TRACK E1 (CONC TIES)	930 T.F.
TRACK E2 (CONC TIES)	950 T.F.
TRACK E3 (CONC TIES)	200 T.F.
TRACK 202 (CONC TIES)	1050 T.F.
TRACK 203	100 T.F.
TEMP TRACK A CONNECTION	250 T.F.
TEMP TRACK D CONNECTION	250 T.F.
NEW TRACK TOTAL	4150 T.F.

TOTAL INCLUDES TRACK INSIDE LOCOMOTIVE BUILDING

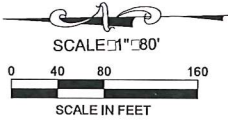
BID PACKAGE 1 NEW TURNOUT SUMMARY		
TRACK □	TURNOUT	TYPE
TRACK 1	101,102	11 LH, 9 RH
TRACK E1	109, 111	9 LH, 9 LH
TRACK E2	114, 108	9 LH, 9 RH
TRACK E3	113	9 RH
TRACK 202	105,112	9 RH, 18 RH
TRACK 203	103	9 RH
RUNNING TRACK	106	9 LH
TRACK A	104	9 RH
TOTALS	TYPE	QTY
	11 LH	1
	9 RH	5
	9 LH	3
	18 RH	2
18 LH	1	

BID PACKAGE 1 RESURFACE SUMMARY	
TRACK □	APPROX. TRACK RESURFACE
LEAD TRACK 1	1230 T.F.
TRACK 203	1135 T.F.
RUNNING TRACK	1500 T.F.
S LEAD TRACK	300 T.F.
RIP SHED TRACK A	500 T.F.
RIP SHED TRACK B	300 T.F.
TRACK 406	900 T.F.
TRACK 407	1000 T.F.
APPROX. RESURFACE TOTAL	5702 T.F.

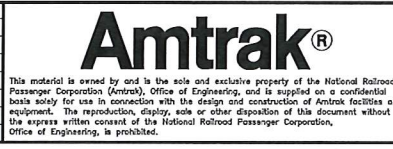
NOTES

- ALL TRACK WORK MUST CONFORM TO AMTRAK STANDARDS AND TRACK DESIGN SPECIFICATIONS.
- DESIGN SPEED IS 5 MPH.
- SEE DRAWING C010 FOR GENERAL CONSTRUCTION NOTES.
- CONTRACTOR RESPONSIBLE FOR PROVIDING DEWATERING AND TEMPORARY SHORING AS NECESSARY.
- NEW TRACKS SHALL BE 136I RAIL AND CONCRETE TIES. SEE AMTRAK STANDARD PLANS 76008B SHEETS 1 AND 2 IN SPECS. CONTRACTOR SHALL FIELD VERIFY EXISTING RAIL WEIGHTS AT TIE-IN POINTS WITH NEW RAIL AND INSTALL TRANSITION RAIL AS NECESSARY.
- DARKER SOLID TRACK LINE WEIGHTS SHOW NEW TRACKS.
- DARKER DASHED TRACK LINES SHOW RESURFACED TRACKS.
- LIGHTER TRACK LINE WEIGHTS SHOW EXISTING TRACK.
- 11 AND 9 TURNOUTS ARE BNSF-UP STANDARD.
- 18 TURNOUTS ARE AMTRAK STANDARD. SEE AMTRAK STANDARD PLAN 73184-H SHEET 1 IN SPECS.

TRACK PLAN 1 T102



No.	Revisions	Date	By
7	100% SUBMITTAL	09/30/2015	GAC
6	90% SUBMITTAL	04/22/2015	GAC
5	60% SUBMITTAL	09/17/2014	GAC
4	45% SUBMITTAL	06/25/2014	GAC
2	30% SUBMITTAL	05/17/2011	BWB
1	15% SUBMITTAL	04/13/2011	BWB



Office of Chief Engineer
STRUCTURES
National Railroad Passenger Corporation
30th Street Station, Philadelphia, Pennsylvania 19104



SEATTLE WASHINGTON
AMTRAK PACIFIC NORTHWEST
BID PACKAGE 01 - LOCOMOTIVE SHOP
TRACK PLAN

File No: C.TR.100057.0001
Work Elem. No: 273491
Sheet No. OFXXX
Dwg. No: T102

Designed	MGM	Drawn	MGM	Checked	AJW	Date
----------	-----	-------	-----	---------	-----	------

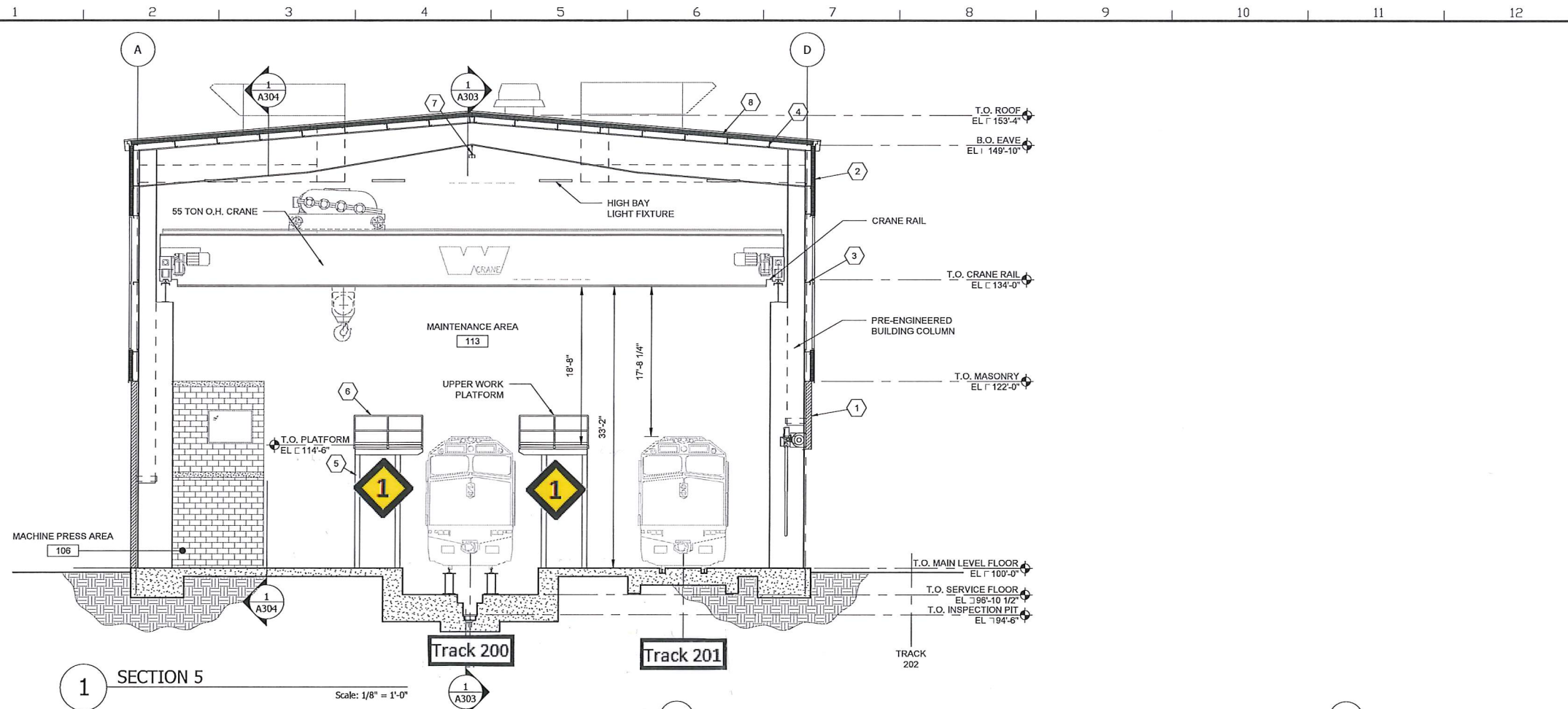
DATE: 03/02/2015 12:46:55 PM
FILE NAME: K:\p\amtrak\1432008\03\production\Documents\01_L0103\03_Construction\Documents\BID Package 01 - (Phase 4)\T102.dwg

NOTES:

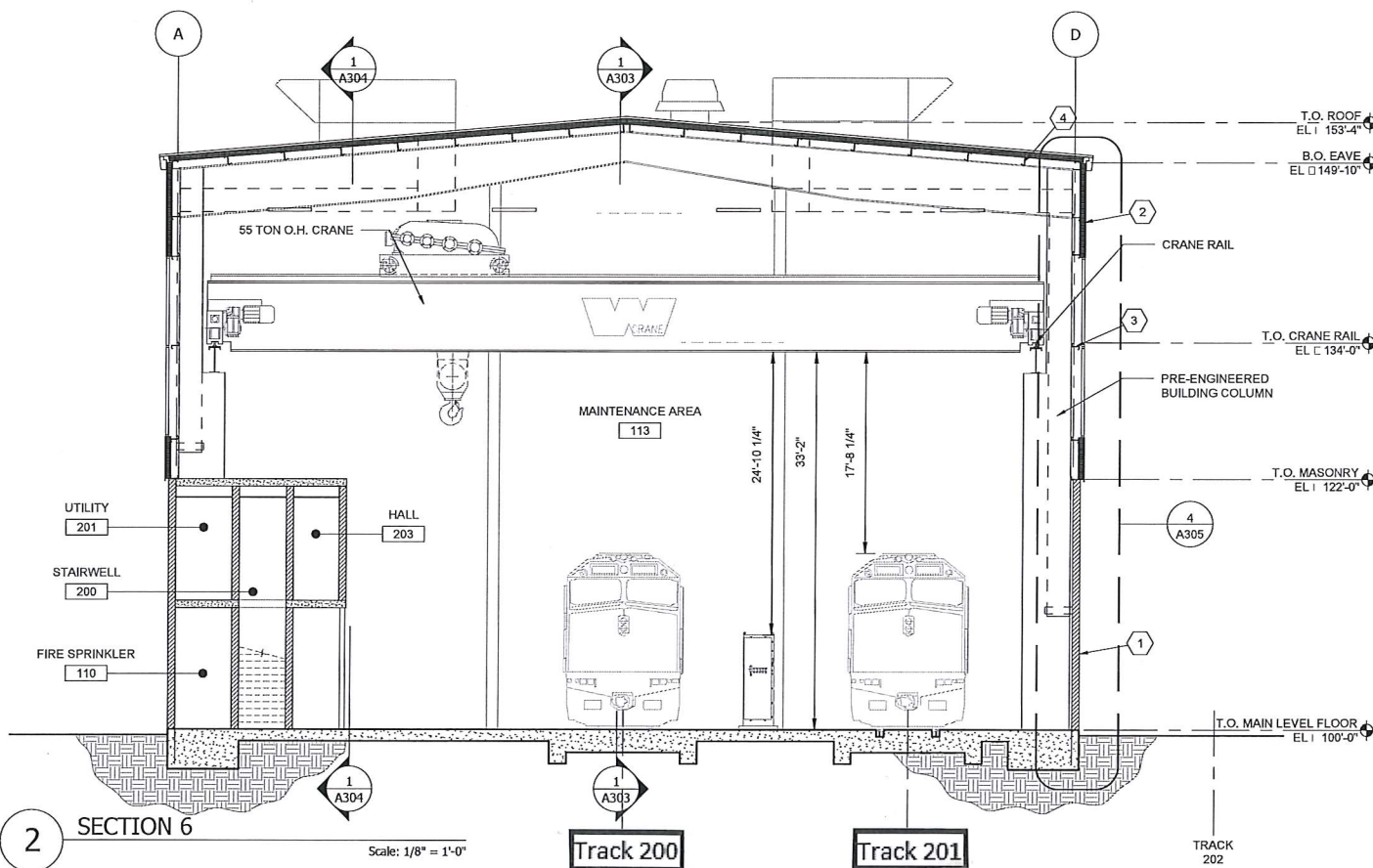
1. WALL AND ROOF METAL INSULATED PANELS TO HAVE A WHITE OR LIGHT COLORED FINISH.
2. PROVIDE ADEQUATE CLEARANCE BETWEEN THE CRANE RAIL AND THE EXTERIOR WALL FOR MECHANICAL DUCTWORK.

KEYNOTES:

1. ROUGH FACED CONCRETE MASONRY UNITS.
2. PRE-FINISHED INSULATED METAL WALL PANELS.
3. METAL WALL GIRTS PER PRE-ENGINEERED METAL BUILDING MANUFACTURER.
4. METAL ROOF PURLINS, PER PRE-ENGINEERED METAL BUILDING MANUFACTURER.
5. WORK PLATFORM COLUMN, REFER TO S510.
6. METAL HANDRAIL WITH INTEGRATED TOE BOARD.
7. FALL PROTECTION RAIL.
8. PRE-FINISHED INSULATED METAL ROOF PANELS.



1 SECTION 5
Scale: 1/8" = 1'-0"



2 SECTION 6
Scale: 1/8" = 1'-0"

No.	Revisions	Date	By
7	100% SUBMITTAL	09/30/2015	GAC
6	90% SUBMITTAL	04/22/2015	GAC
5	60% SUBMITTAL	09/17/2014	GAC
4	45% SUBMITTAL	06/25/2014	GAC
2	30% SUBMITTAL	06/17/2011	BWB
1	15% SUBMITTAL	04/13/2011	BWB

Amtrak®
This material is owned by and is the sole and exclusive property of the National Railroad Passenger Corporation (Amtrak). Office of Engineering, and is supplied on a confidential basis solely for use in connection with the design and construction of Amtrak facilities and equipment. The reproduction, display, sale or other disposition of this document without the express written consent of the National Railroad Passenger Corporation, Office of Engineering, is prohibited.

Office of Chief Engineer
STRUCTURES
National Railroad Passenger Corporation
30th Street Station, Philadelphia, Pennsylvania 19104

10590 REGISTERED ARCHITECT
BOBBY W. BISHOP, JR.
STATE OF WASHINGTON
9/23/15
HANSON
Hanson Professional Services Inc.

CSA Cedar Street ARCHITECTURE
5151 Macdonald Drive, Suite 205 | Denver, CO 80251
Phone: (303) 429-4110 | Fax: (303) 429-4119

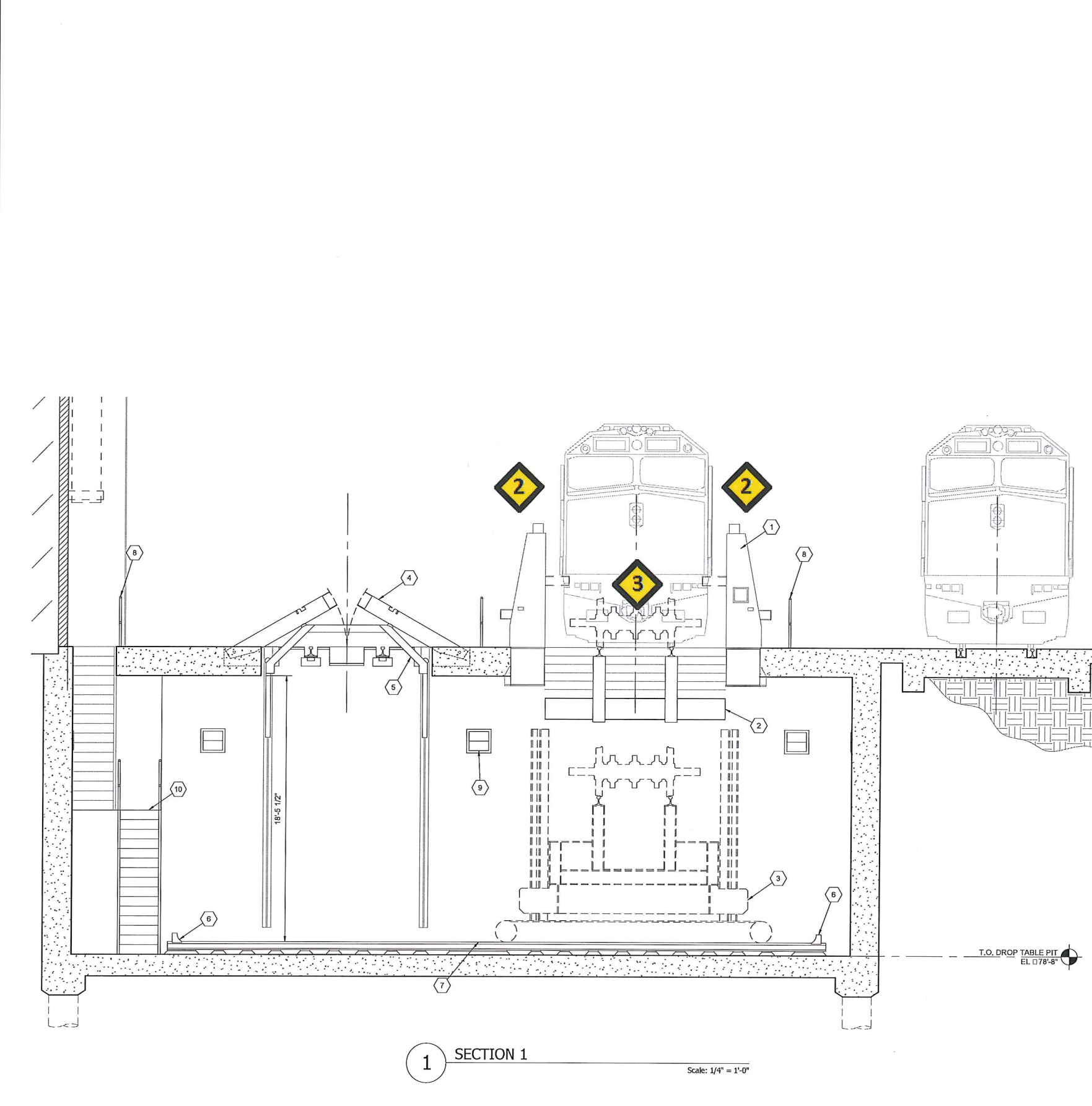
TKDA
444 Cedar Street, Suite 1500
St. Paul, MN 55101
Phone: (651) 292-4400
Fax: (651) 292-0083
tkda.com
TKDA# 0014435.008

SEATTLE WASHINGTON
AMTRAK PACIFIC NORTHWEST
BID PACKAGE 01 - LOCOMOTIVE SHOP
BUILDING SECTIONS 3
Designed GAC Drawn GAC Checked BWB Date 04/22/2015

File No: C.TR.100057.0001
Work Elem. No: 273491
Sheet No. OF
A302

DATE PLOTTED: 10/22/2015 3:15:46 PM
FILE: \\p1\work\1453205\303_Production Documents\01_CAD\03_Construction Documents\Bld Package 01 - (Phase 4)\A302.dwg

DATE: 04/22/2015 5:19:25 PM
 FILE NAME: C:\p\Amtrak\14050003_Production Documents\01_CAD\03_Construction Documents\Bid Package 01 - (Phase 4)\M01.dwg
 X



- KEYNOTES:**
1. BODY SUPPORT BEAM, COORDINATE WITH DROP TABLE MANUFACTURER. WHITING IS BASIS OF DESIGN.
 2. SERVICE TABLE TOP.
 3. DROP TABLE.
 4. HINGED RELEASE TRACK TOP (FLAT).
 5. HINGED RELEASE TRACK SUPPORT.
 6. DROP TABLE RAIL END PLATE TYP. REFER TO MANUFACTURER DRAWINGS FOR INSTALLATION.
 7. DROP TABLE RAIL TYP. REFER TO DROP TABLE MANUFACTURER DRAWINGS.
 8. METAL HANDRAIL WITH INTEGRATED TOE BOARD.
 9. WALL-PAK LIGHTING FIXTURE. SEE ELECTRICAL DRAWINGS.
 10. PRE-FORMED METAL STAIRS WITH CONCRETE PAN, NO SLIP TREAD AND HANDRAIL.

- NOTES:**
1. DROP TABLE IS TO BE A 125 TON FULL TRUCK DROP TABLE WITH SPLIT TOP FOR SINGLE AXLE SERVICE. WHITING IS THE BASIS OF DESIGN.
 2. COORDINATE EMBEDDED ELECTRICAL AND SIGNAL CONDUITS FOR OPERATION OF THE DROP TABLE. MANUFACTURER TO SPECIFY NUMBER AND SIZE OF CONDUITS, CONTRACTOR TO INSTALL.
 3. COORDINATE DROP TABLE EQUIPMENT AND FIXTURES WITH MECHANICAL AIR SUPPLY/EXHAUST DUCTWORK.
 4. LOCOMOTIVES, TRUCKS AND WHEEL SETS ARE SHOWN FOR REFERENCE ONLY.
 5. AUXILIARY SERVICE TOP SHALL BE LOCATED ON THE NORTH END OF THE DROP TABLE. REFER TO MANUFACTURERS DRAWINGS.
 6. RAIL, SUPPORTS AND ATTACHMENT ON DROP TABLE AND RELEASE TRACK PROVIDED BY DROP TABLE MANUFACTURER.

1 SECTION 1
Scale: 1/4" = 1'-0"

No.	Revisions	Date	By
7	100% SUBMITTAL	09/30/2015	GAC
6	90% SUBMITTAL	04/22/2015	GAC
5	60% SUBMITTAL	09/17/2014	GAC
4	45% SUBMITTAL	06/25/2014	GAC
2	30% SUBMITTAL	06/17/2011	BWB
1	15% SUBMITTAL	04/13/2011	BWB

Amtrak®
 This material is owned by and is the sole and exclusive property of the National Railroad Passenger Corporation (Amtrak), Office of Engineering, and is supplied on a confidential basis solely for use in connection with the design and construction of Amtrak facilities and equipment. The reproduction, display, sale or other disposition of this document without the express written consent of the National Railroad Passenger Corporation, Office of Engineering, is prohibited.

**Office of Chief Engineer
 STRUCTURES**
 National Railroad Passenger Corporation
 30th Street Station, Philadelphia, Pennsylvania 19104

10590 REGISTERED ARCHITECT
BOBBY W. BISHOP, JR.
 STATE OF WASHINGTON
 9/3/15

HANSON
 Hanson Professional Services Inc.

CSA Cedar Street ARCHITECTURE
 5151 Market Drive, Suite 202 | Downtown Grove, IL 60515
 Phone (833) 499-4110 | Fax (833) 499-4119

TKDA
 444 Cedar Street, Suite 1500
 St. Paul, MN 55101
 Phone (651) 292-4400
 Fax (651) 292-0083
 tkda.com
 TKDA# 0014435.008

SEATTLE WASHINGTON
**AMTRAK PACIFIC NORTHWEST
 BID PACKAGE 01 - LOCOMOTIVE SHOP**
 DROP TABLE SECTIONS
 Designed GAC Drawn GAC Checked BWB Date 04/22/2015

File No: C.TR.100057.0001
 Work Elem. No: 273491
 Sheet No. OF
A804

