

September 26, 2016

Washington Utilities and Transportation Commission
1300 S. Evergreen Park
Drive S.W.
PO Box 47205
Olympia, WA 98504-7250

Attn: Bob Boston

Subject: Tessengerlo Kerley: Rule Exemption Request, WAC 480-60-050

Dear Bob,

Tessengerlo Kerley is requesting exemption to railroad horizontal clearance rules in WAC 480-60-050 as described below. Please find attached exhibit of existing industry tracks 1226 and 1222 in the Tessengerlo Kerley facility located in Finley, Washington. These tracks are currently served by BNSF. WAC 480-60-050 generally requires a minimum horizontal clearance of 8'-6".

We are requesting a variance for the horizontal clearance on Track 1222 of 7.1' and on Track 1226 of 8.0' including any permanent structures that are between these clearances and the standard 8.5' clearances.

The minimum existing horizontal clearance for Track 1226 is 7.1' to a steel beam column that supports their existing infrastructure. The minimum existing horizontal clearance for Track 1222 is 7.2' to a similar steel beam. We are proposing to increase clearance for Track 1222 to 8.0' by realigning this track. The proposed track centers between these two tracks will be 13'. The existing track centers for these two tracks range from 13.9' to 13.5' and then to 14.7'.

The BNSF Railway Company (BNSF), as the primary rail operator within this facility, has reviewed this concept and has tentatively approved this concept pending receipt of variance from the WUTC.

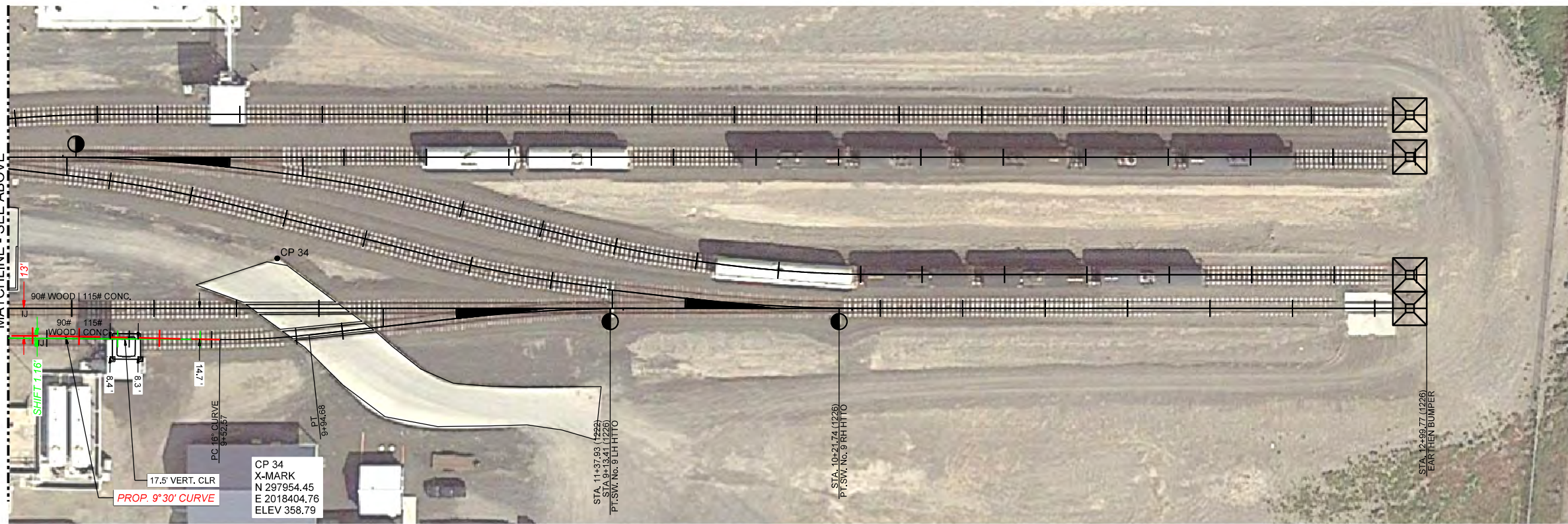
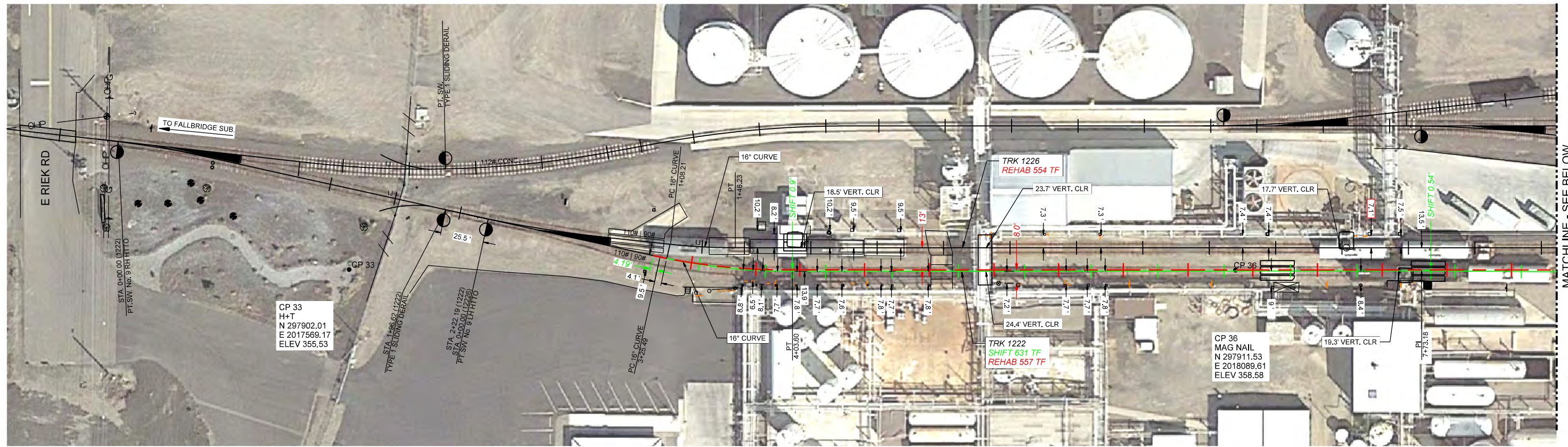
Tessengerlo Kerley, with the direction from the BNSF, will clearly mark and provide "No Clearance" signs per BNSF STD DWG 3044 (App. I) identifying the location of impaired clearances on both of these tracks.

We appreciate your review of this project and these clearances. If you have any questions, please feel free to contact me.

Thank you,

Sam Shihada
Projects Manager
Tessengerlo Kerley Inc.
Phone: 602-889-8328
Fax: 602-889-6376
Cell: 602-317-4348

R:\Engineering\6F5009 - Railworks - TKI - Finley WA\CAD\CAD Exhibits\2016-08-16 TKI\Finley Concept Layout.dgn 9/6/2016



PROJECT VARIANCES

1. HORIZONTAL IMPAIRED CLEARANCE OF 7.1' MIN. ON TRK 1226 AND 8.0' ON TRK 1222.
2. 13' TRACK CENTERS PER WAC 296-860-20060 (INDUSTRY TRACK).
3. FACE POINT DISTANCE BETWEEN DERAIL AND TRACK 1226 POINT OF SWITCH IS 25.5'.
4. MAINTAIN USE OF EXISTING 16° CURVES.

ALL EXIST. CURVES ARE 9°-30' UNLESS OTHERWISE SHOWN
ALL EXIST. TURNOUTS ARE No. 9 TURNOUTS

NOTE:
TKI HAS AN EXISTING EXEMPTION TO VERTICAL CLEARANCE
REQUIRED FROM BNSF & MUTC PER DOCKET No. TR-091344
DATED SEPTEMBER 24, 2009.

CONCEPT DESIGN

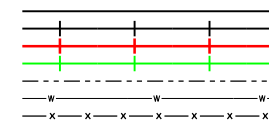


360 S. FORT LN, STE. # 3A - LAYTON, UTAH 84041
www.railpros.com

REVISION #	BY	DATE	DESCRIPTION	STAMP
PRELIMINARY				
NOT FOR CONSTRUCTION				

LEGEND:

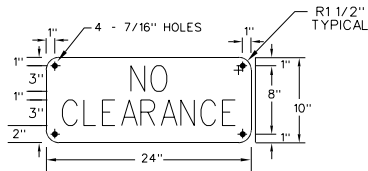
- EXISTING MAINLINE TRACKAGE
- EXISTING INDUSTRY OWNED TRACKAGE
- PROPOSED INDUSTRY OWNED TRACKAGE
- EXISTING TRACKAGE TO BE SHIFTED
- EXISTING RIGHT-OF-WAY / PROPERTY LINE
- EXISTING WATERLINE
- EXISTING FENCE



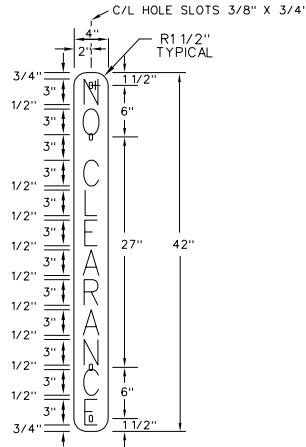
DRAWN BY:	RH
CHECKED BY:	SM
SCALE:	AS SHOWN
DATE:	9/6/2016
SHEET NUMBER	1 of 1

LOCATION & DESCRIPTION:	TESSENDERLO KERLEY FINLEY, BENTON COUNTY, WA MP 223.09, FALLBRIDGE SUBDIVISION
TRACK CONCEPT LAYOUT	

EXAMPLE 1



EXAMPLE 2



SIGNS:

NO. 44 - "NO CLEARANCE"

PLACE NO CLEARANCE SIGN ON BUILDING STRUCTURE OVER C/L TRACK WHERE VERTICAL CLEARANCE IS LESS THAN REQUIRED. LETTERED AND MOUNTED AS SHOWN IN EXAMPLE 1.

NO. 44A - "NO CLEARANCE"

PLACE NO CLEARANCE SIGN ON BUILDING STRUCTURE OR POST WHERE HORIZONTAL CLEARANCE IS LESS THAN REQUIRED. LETTERED AND MOUNTED AS SHOWN IN EXAMPLE 2.

NOTES:

1. THE SIGNS LISTED IN THIS PLAN ARE 10" X 24" AND 4" X 42" SIZED WITH WHITE BACKGROUND AND BLACK LETTERS, ONE SIDE ONLY, AS SHOWN IN EXAMPLES 1 AND 2.
2. SEE PLAN 3000.01 FOR ADDITIONAL SPECIFICATIONS AND INFORMATION CONCERNING THE REFLECTIVE AND PANEL MATERIAL.
3. FOR USE IN THE STATE OF MINNESOTA AS ORDERED BY THE PUB. SERV. COMM. AT POINTS WHERE CLEARANCE IS LESS THAN THE LEGAL REQUIREMENT.

BILL OF MATERIALS

QUANTITY	SIGN PANEL
1 EA.	SIGN NO. 44-NO CLEARANCE ITEM NO. 047220983
1 EA.	SIGN NO. 44A-NO CLEARANCE ITEM NO. 047220984
	OPTIONAL HARDWARE
1 EA.	2 LB. PER LIN. FT. GALVANIZED FLANGED CHANNEL STEEL POST, 8'-0" LONG WITH 3/8"Ø MONTING HOLES, 1" CENTERS, WITH POINTED END.
2 EA.	5/16" DIA. X 2" GALVANIZED ROUND HEAD SQUARE NECK MACHINE BOLT, ALL THREAD, WITH LOCK NUT AND WASHER.

BURLINGTON NORTHERN SANTA FE STANDARD PLAN ENGINEERING DEPT., FORT WORTH, TEXAS	
CLEARANCE SIGNS	
RAIL:	
DATE: 06/10/96	SCALE:
DWG. NO. 3044	SHEET NO. 01
REV. NO. 04	
USE OF THIS DRAWING IS LIMITED TO BURLINGTON NORTHERN SANTA FE AND THE PARTY DESIGNATED ON THE ATTACHED SHEET. NO USE MAY BE MADE BY ANY THIRD PARTY WITHOUT THE WRITTEN CONSENT OF BURLINGTON NORTHERN SANTA FE.	