

TG-143457



# Community Planning Department

210 West 6th Avenue, P.O. Box 6108, Kennewick, WA 99336

Phone: (509) 585-4280 | Fax: (509) 585-4442 | Email: [cedinfo@ci.kennewick.wa.us](mailto:cedinfo@ci.kennewick.wa.us)

September 8, 2014

## DISTRIBUTION LIST – UTILITIES

Re: Annexation 13-02

On September 2, 2014, the Kennewick City Council adopted Ordinance 5567, annexing a portion of the County located south of Canyon Lakes and Zintel Canyon Dam. The annexation contains 13 parcels and 318 acres. The full version of the ordinance can be found on the City's website at [www.go2kennewick.com](http://www.go2kennewick.com).

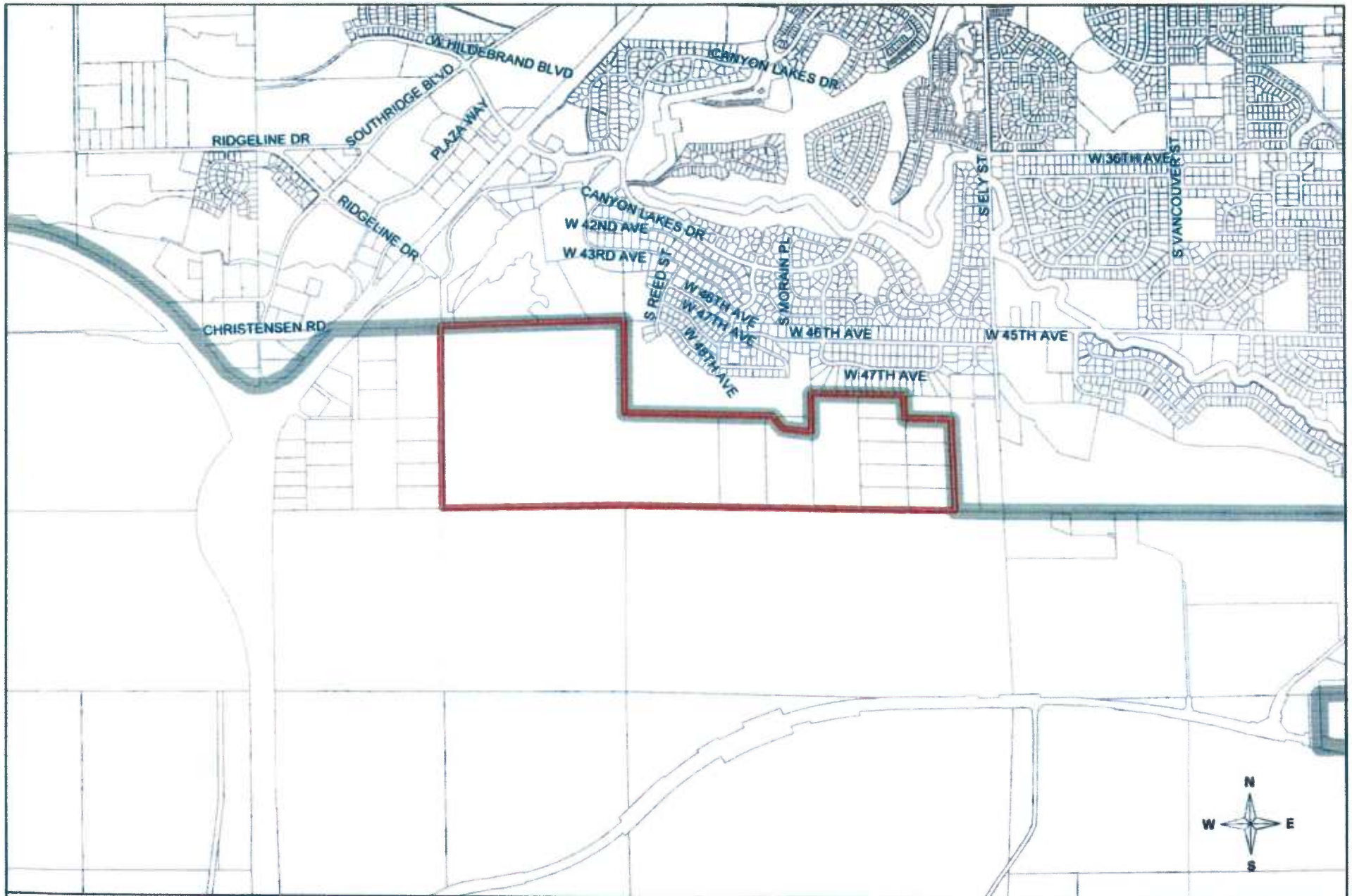
Enclosed is a list of property addresses for the annexation. Please note that utility taxes will be due on usage on or after the effective date of the annexation. The annexations will be effective September 7, 2014.

Sincerely,

Anthony Muai, AICP  
Planner

Enclosure – Map AZ 13-02, Property Listing

RECEIVED  
RECORDS MANAGEMENT  
2014 SEP 11 PM 2:10  
STATE OF WASH.  
UTIL. AND TRANSP.  
COMMISSION



**AZ 13-02 (Nowak Trustees)**  
**Annexation Boundary**  
 318 acres +/-



Annexation Boundary

City Limits

**Annexation 13-02 – South Kennewick (Nowak Trustees)**

<b>PARCEL NUMBER</b>	<b>ADDRESS*</b>
1-2189-100-0001-000	UNASSIGNED
1-2289-200-0004-000	UNASSIGNED
1-2289-200-0005-002	UNASSIGNED
1-2289-100-0003-000	UNASSIGNED
1-2289-100-0004-000	UNASSIGNED
1-2289-100-0005-000	UNASSIGNED
1-2289-100-0006-000	UNASSIGNED
1-2289-100-0007-000	UNASSIGNED
1-2289-100-0008-000	UNASSIGNED
1-2289-100-0010-000	UNASSIGNED
1-2289-100-0011-000	UNASSIGNED
1-2289-100-0012-000	UNASSIGNED
1-2289-100-0013-000	UNASSIGNED

\*All parcels within the boundary of this annexation are undeveloped and lack public access. As such, the parcels have not yet been assigned an address.