

Univar USA Inc.
6100 Carillon Point
Kirkland, WA 98033
PO Box 34325
Seattle, WA
98124-1325 USA

T 425 889 3400
F 425 889 4100
www.univarusa.com



2013 OCT -3 AM 8:29

Washington Utilities and Transportation Commission
1300 S. Evergreen Park
Drive S.W.
PO Box 47205
Olympia, WA 98504-7250

September 23, 2013

RE: Olympic Chemical: Rule Exemption Request, WAC-480-60-40, WAC-480-60-50

Olympic Chemical Corporation
1002 E. D Street
Tacoma, WA 98421

Phone: 253-572-4215
Contact: Geoff Black

As required under WAC 480-60-20(4) Olympic Chemical Corporation (a wholly owned subsidiary of Univar USA Inc.) is requesting a rule exemption as described below.

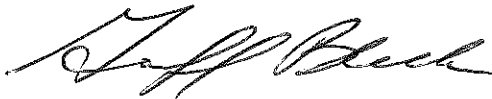
Rule Exemption Request:

- 1) Written request to the Commission requesting exemption from railroad clearance rules in WAC 480-60.
- 2) WAC 480-60-040 generally requires an overhead clearance of at least 22'-6" measured from the top of the track. Although the rules provide for exceptions, the structure associated with Olympic Chemical Corporation's (OP's) request is subject to the general rule.
- 3) WAC 480-60-050 generally requires a side clearance of at least 8'-6", measured from the centerline of the track. Although the rules provide for exceptions, the structure associated with Olympic Chemical Corporation's (OP's) request is subject to the general rule.
- 4) The BNSF Railway Company (BNSF), as the primary rail operator within the OP facility, has tentatively approved our facility improvement requiring the proposed exemption. BNSF's support is conditional upon the Commission granting an exception for the proposed clearances.

- 5) The request relates to the installation of a tracking railcar unloading rack which will provide additional safety / fall protection for personnel while unloading railcars. Reference attachment "A" OP Railcar Unloading Rack and Attachment "B" OP Railcar Unloading Rack Description.
 - 6) The overhead track clearance attained by the proposed railcar unloading design is less than that required by WAC-480-60-40. The overhead clearance under the rack safety cage (in stored position) would be reduced to 18'-0" for the length of the 8' x 8' horizontal safety cage.
 - 7) The lateral track clearance attained by the proposed railcar unloading design is less than that required by WAC-480-60-50. The side clearance between the three foot wide unloading rack (in stored position) would be a minimum of 7'-0".
 - 8) The proposed overhead track clearance exception is as follows: Clearance below the loading rack (in stored position) to be reduced to 18'-0" for the length of 8'-0" directly below the horizontally stored rack with safety cage.
 - 9) The proposed side clearance exception is as follows: Clearance between the face of the tracking unloading rack to be reduced to a minimum clearance of 7'-0".
- 10) Olympic Chemical, with direction from the BNSF, will clearly mark and sign the structure identified above as having substandard clearances.

I look forward to your response to our rule exemption request. Please contact me at the above number or my mobile number 253-219-9186 should you have any questions or require further clarification.

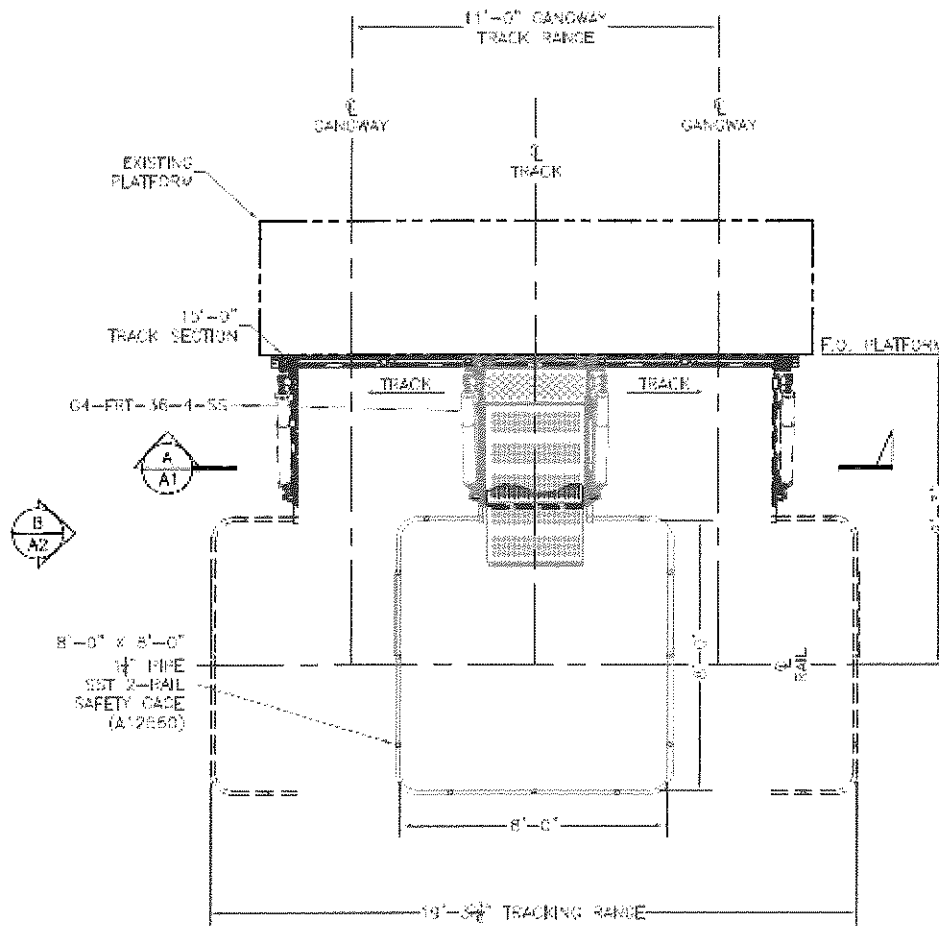
Sincerely,



Geoff Black
Operations Supervisor

cc: Mark Rogers

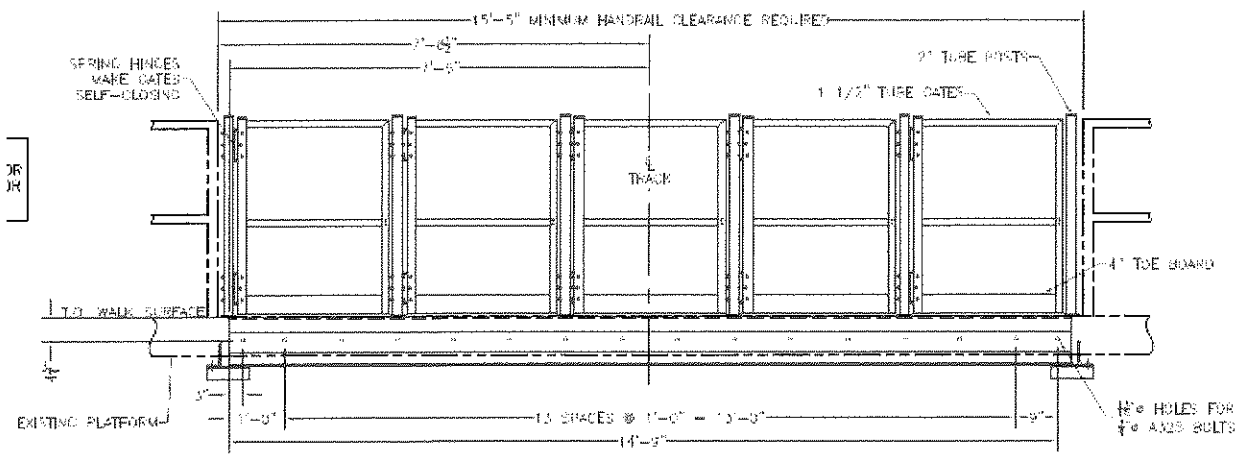
Attachment A – OP Railcar Unloading Rack (Drawings)



PLAN VIEW
(GANGWAY SHOWN @ HORIZONTAL)

REVISIONS CUSTOMER INFORMATION: OLYMPIC CHEMICAL 1002 EAST 10 TH STREET TACOMA, WA 98421 ATTN: ERICH BAUER 509.229.8448		UNLESS OTHERWISE SPECIFIED TOLERANCES: LINEAR ± .005 ANGULAR ± .5°	DIMENSIONS:
DRAWN: BAH 8-21-13 CHECKED: JWC ENG: WM 8-21-13 APP'D: KE			
HOME OFFICE: 730 ELECTRA DRIVE, SUMMER, SC 29166 DESCRIPTION: GENERAL ARRANGEMENT G4-FRT STYLE GANGWAY & TRACK FOR RAILCAR ACCESS			
DRAWING NO: 212348-A1	SHEET: 1 OF 2	REV: —	
PROJ: 60156301	SCALE: 3/8" = 1'-0"	SIZE: D	

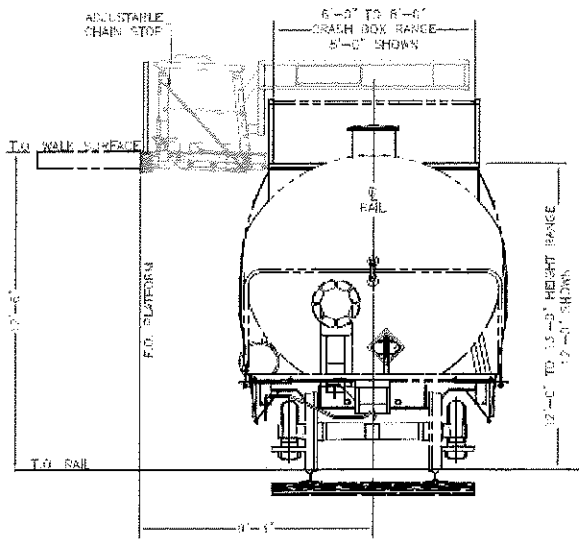
ALL INFORMATION CONTAINED HEREIN IS CONFIDENTIAL AND PROPRIETARY AND MAY NOT BE DISCLOSED IN ANY FORM WITHOUT PRIOR WRITTEN CONSENT OF SAFERACK LOADING RACK TECHNOLOGIES



SECTION



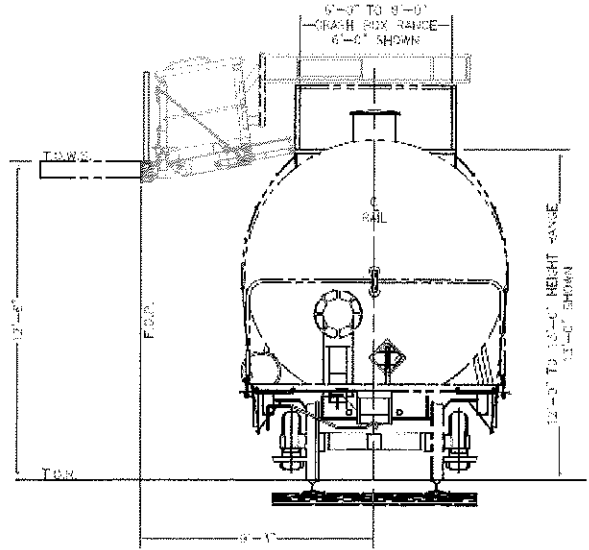
SCALE 3/4" = 1'-0" (A)



VIEW

(B)
A1

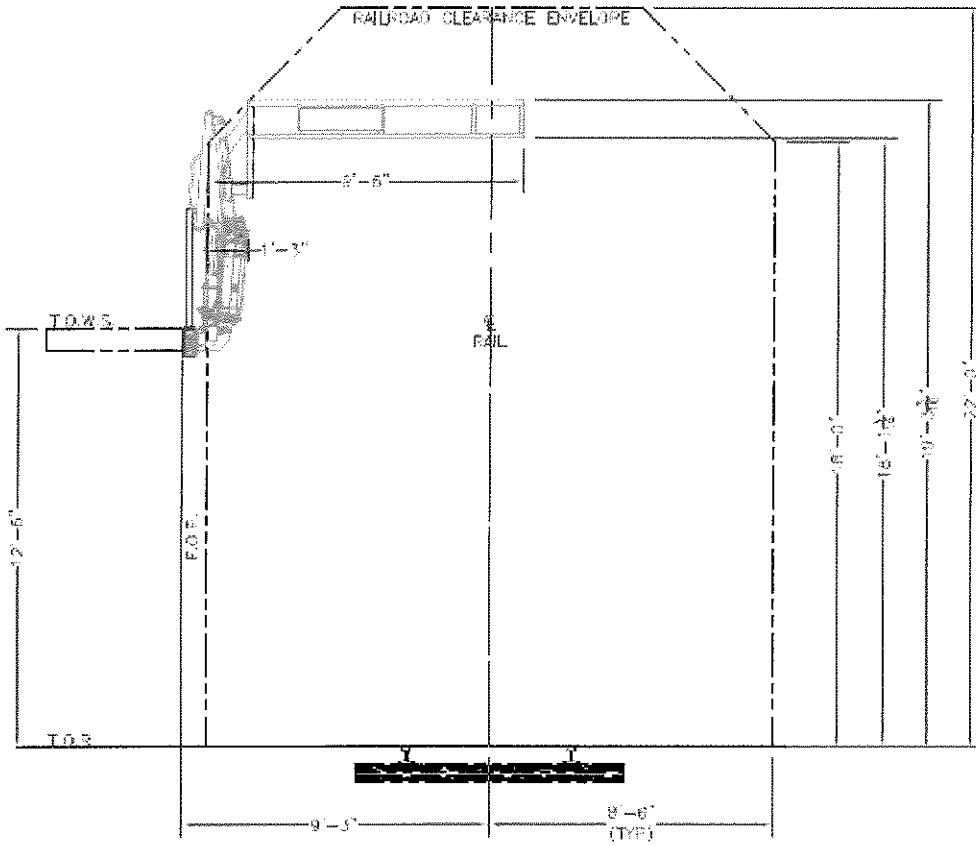
(GANGWAY SHOWN IN WORKING POSITION)



VIEW

(B)
A1

(GANGWAY SHOWN IN WORKING POSITION)



VIEW

(B)
A1

(GANGWAY SHOWN STORED @ 85° ABOVE HORIZONTAL POSITION)

Attachment B – OP Railcar Unloading Rack (Description)

RE: FLAT RAMP GANGWAY WITH TRACK

- 1 **(G4) FRT TRACKING FLAT RAMP WITH TELESCOPING END SAFE ACCESS GANGWAY (3 feet wide) STAINLESS STEEL**
- * SINGLE PIECE PATENTED “U” body frame support design is stamped and formed from one integral, continuous unbroken piece of stainless steel – all structural welding eliminated in areas of high load concentration no structural welds that could break
 - * Centerline 8’-6”
 - * Molded ergonomically crafted handle allows for easy positioning of the 11” or 21” extension which eliminates gaps
 - * Two (2) oversized 1” diameter solid stainless steel pivot rods with pivoting bushings at all load bearing pivots for unmatched strength, long life and a more solid walk surface
 - * High strength spring counterbalance mechanism ensures easy operation of system for any and all operators
 - * Over travel stops with rubber bumpers provide a “smooth, soft, and buffered” return of the gangway if retracted with strong force.
 - * Outboard gangway uprights are 2” x 4” tube that increases load bearing capabilities which provides a stronger, safer support for the cage assembly
 - * Manufactured, stamped and formed components along with CNC machined pivot points with .004 tolerances ensures reduced wear and repeatable quality
 - * Patented foot lock design offers improved reliability over other designs for many years of trouble free operation
 - * Base tread uprights come standard with hot dipped Galvanized steel construction, but is also available in stainless steel
 - * Laser keyed upright chain stay design helps keep chains untangled around foot lock and lift rope along with increasing the systems strength.
 - * Unit is self supporting and has a 500 lb load capacity
- 1 **36” WIDE TRACK MOUNT CARRIAGE**
- * Allows gangway to track left or right along the face of the platform.
- 1 **TRACK SECTION**
- * 15’ - 0” track with uprights
 - * 3’ - 0” wide, self – closing swing gates (some assembly required)
 - * Galvanized steel construction
- 1 **SAFETY CAGE**
- * 8’-0” x 8’-0” Two (2) rail safety cage (12”) deep
 - * Stainless steel construction