

The Burlington Northern & Santa Fe Railway Company

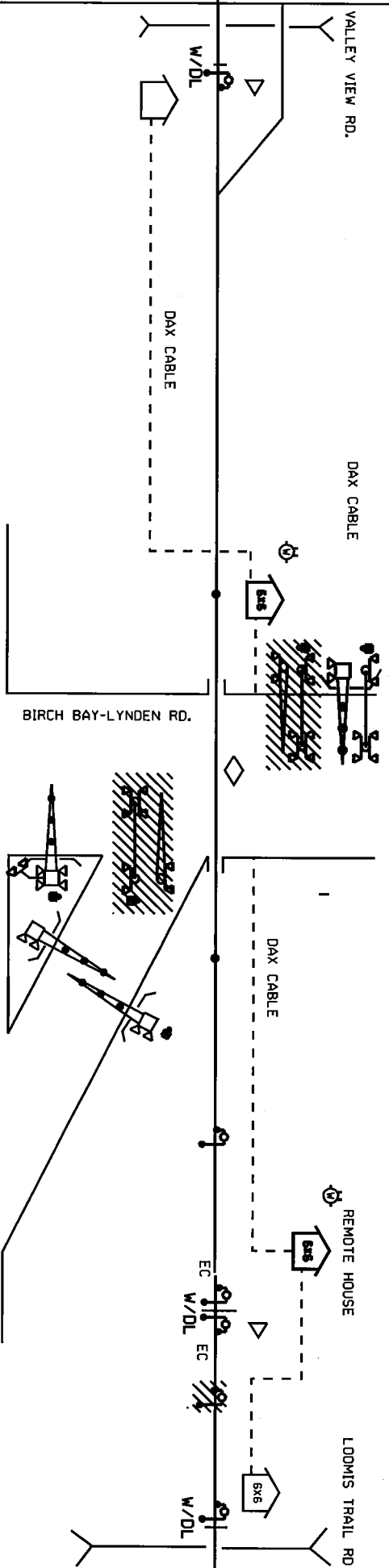
TO SEATTLE

TO CANADA

EASTWARD APPR. 4175'

WESTWARD APPR. 4175'

79 MPH



BIRCH BAY-LYNDEN RD.

DOT # 084 545 A

PORTAL WAY

INSTALL: GATES, FLASHERS, CANTILEVER AND REMOTE HOUSE
 CONTROL DEVICES: CONSTANT WARNING

BOLD - IN
 SALVAGE: NONE

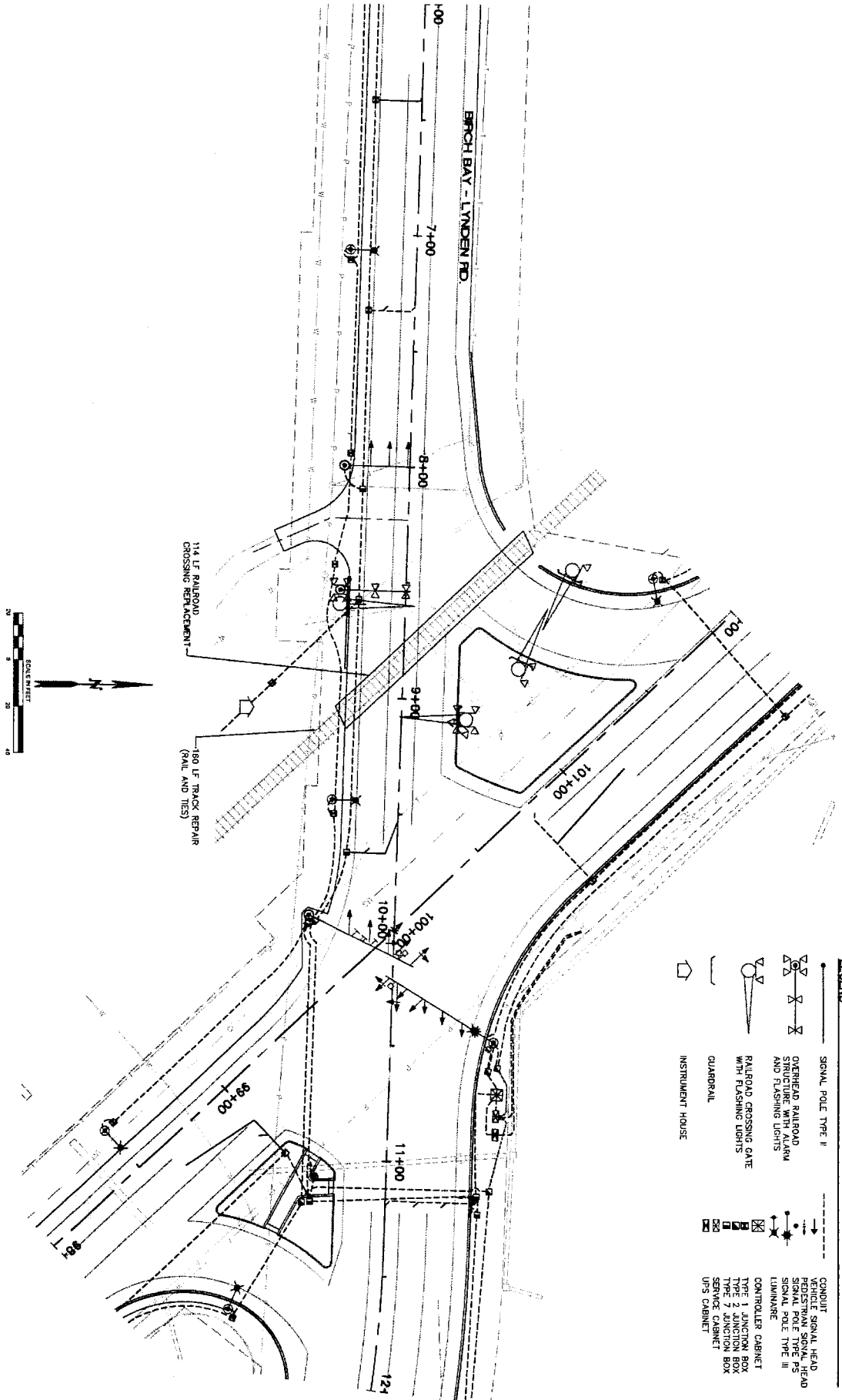


- INSTRUMENT HOUSE
- BELL
- METER
- CROSSING CONTROL CONNECTIONS
- BIDIRECTIONAL CROSSING CONTROL
- UNIDIRECTIONAL CROSSING CONTROL
- COUPLER OR TERMINATION
- GUARD RAIL

Warning device placement:
 Clearance to C.L. Track = Min. 12'
 Edge of Road to C.L. Foundation:
 Min. 4'3" with curb.
 Min. 8'3" without curb.
 Max. 12'
 House Clearance:
 25' Min. to Near Rail
 30' Min. to Edge of Road
 ALL LIGHTS TO BE LED

BNSF RAILWAY CO.
 LOCATION: LYNDEN, WA.
 STREET: BIRCH BAY-LYNDEN RD
 LS: 0050
 M.P. 113.60
 DOT # 084 545 A
 DIVISION: NORTHWEST
 SUBDIVISION: BELLINHAM
 KANSAS CITY
 NO SCALE
 DATE: 01/07/2013
 FILE: 0050113.60.dgn
 JWM

EXHIBIT B



- LEGEND**
- SIGNAL POLE TYPE II
 - VEHICLE SIGNAL HEAD
 - FOOTSTRAIN SIGNAL HEAD
 - SIGNAL POLE TYPE I
 - SIGNAL POLE TYPE III
 - LUMINAIRE
 - CONTROLLER CABINET
 - TYPE 1 JUNCTION BOX
 - TYPE 2 JUNCTION BOX
 - SERVICE CABINET
 - UPS CABINET
 - CONDUIT
 - OVERHEAD RAILROAD STRUCTURE WITH ALARM AND FLASHING LIGHTS
 - RAILROAD CROSSING GATE WITH FLASHING LIGHTS
 - GARDERAIL
 - INSTRUMENT HOUSE