



T6-121700-CT

October 23, 2012

State of Washington
Utilities and Transportation Commission
P. O. Box 47250
Olympia, WA 98504-7250

RECEIVED
RECORDS MANAGEMENT
2012 OCT 25 AM 8:05
STATE OF WASH
UTIL. AND TRANSP
COMMISSION

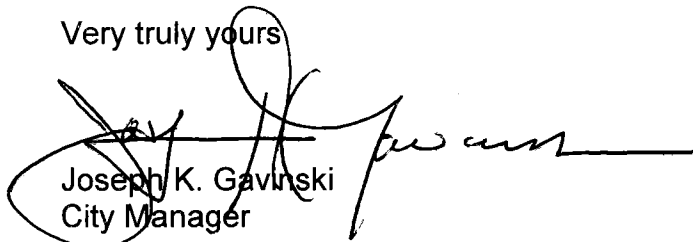
RE: City of Moses Lake
Wiser Commercial Park - Annexation of Territory
Regulation of Solid Waste Collection

Gentlemen:

Please be advised that the City of Moses Lake annexed certain territory, commonly known as the "Wiser Commercial Park Annexation," effective October 17, 2012. Enclosed is a copy of the City's annexation ordinance. Also enclosed is a copy of a letter sent to Consolidated Disposal Service, Inc. granting it a franchise for garbage service.

With this letter, the city provides notice to the WUTC of its decision to contract for solid waste collection in the "Wiser Commercial Park Annexation". By law, RCW 35A.14.900, with the city's decision to contract for solid waste collection in the "Wiser Commercial Park Annexation" area, the City grants a statutory franchise to the state's certificate holder in the "Wiser Commercial Park Annexation" area, Consolidated Disposal Service, Inc., to continue its solid waste collection business in the "Wiser Commercial Park Annexation" area for 10 years from the effective date of the annexation.

Very truly yours


Joseph K. Gavinski
City Manager

JKG:jt

Enclosure

Posted
RMS


ORDINANCE NO. 2660

AN ORDINANCE ANNEXING PROPERTY COMMONLY KNOWN AS THE WISER COMMERCIAL PARK ANNEXATION TO THE CITY OF MOSES LAKE, WASHINGTON, AND INCORPORATING THE SAME WITHIN THE CORPORATE LIMITS OF THE CITY OF MOSES LAKE

THE CITY COUNCIL OF THE CITY OF MOSES LAKE, WASHINGTON DO ORDAIN AS FOLLOWS:

Section 1. The following described real estate, as shown on the attached map marked Exhibit A which by this reference is incorporated within this ordinance, situated in Grant County is hereby annexed to and incorporated in the City of Moses Lake:

Lot 11 less west 60', Wiser Commercial Park Plat as per plat recorded in Volume 11 of Plats, page 14, records of Grant County, Washington

Parcel # 121138011 (less 60')

Total acreage 2.29 acres

Section 2. All property within the territory annexed shall hereinafter be assessed and taxed at the same rate and on the same basis as other property within the city.

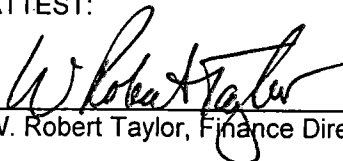
Section 3. The area annexed will be zoned L-I, Light Industrial.

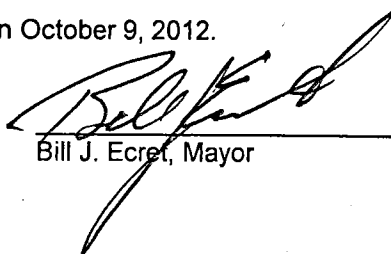
Section 4. That a copy of this ordinance shall be filed with the Board of County Commissioners of Grant County, Washington.

Section 5. This ordinance shall take effect and be in force five (5) days after its passage and publication of its summary as provided by law.

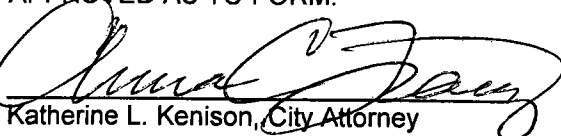
Adopted by the City Council and signed by its Mayor on October 9, 2012.

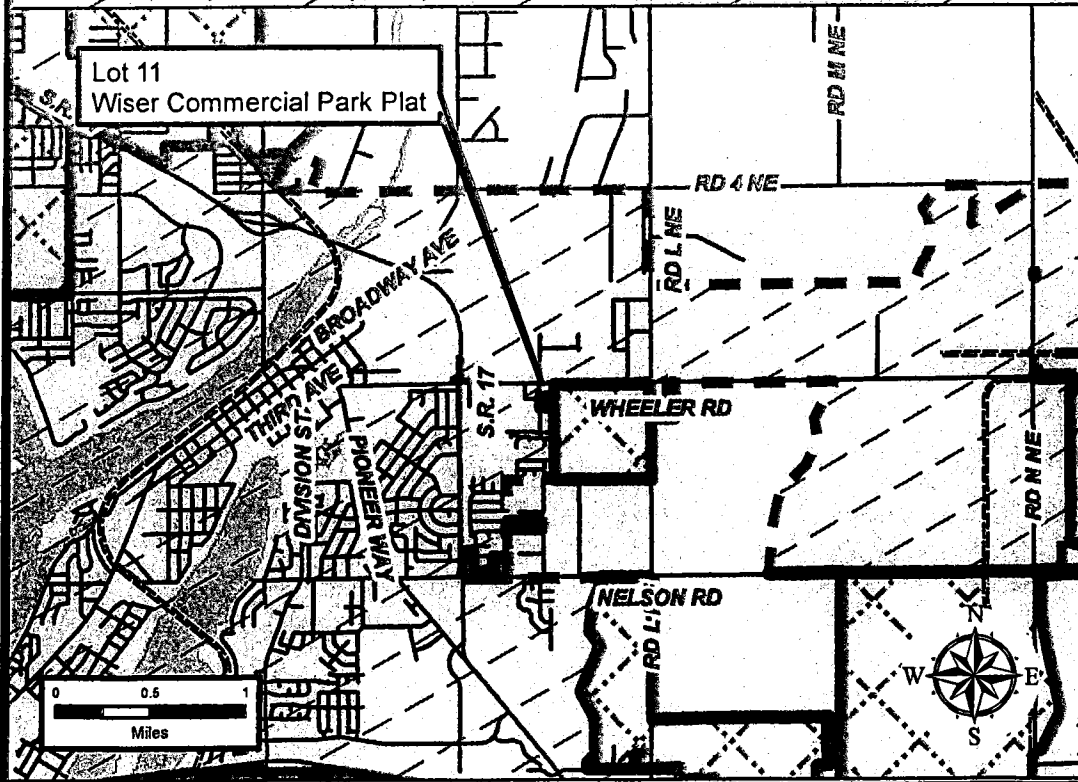
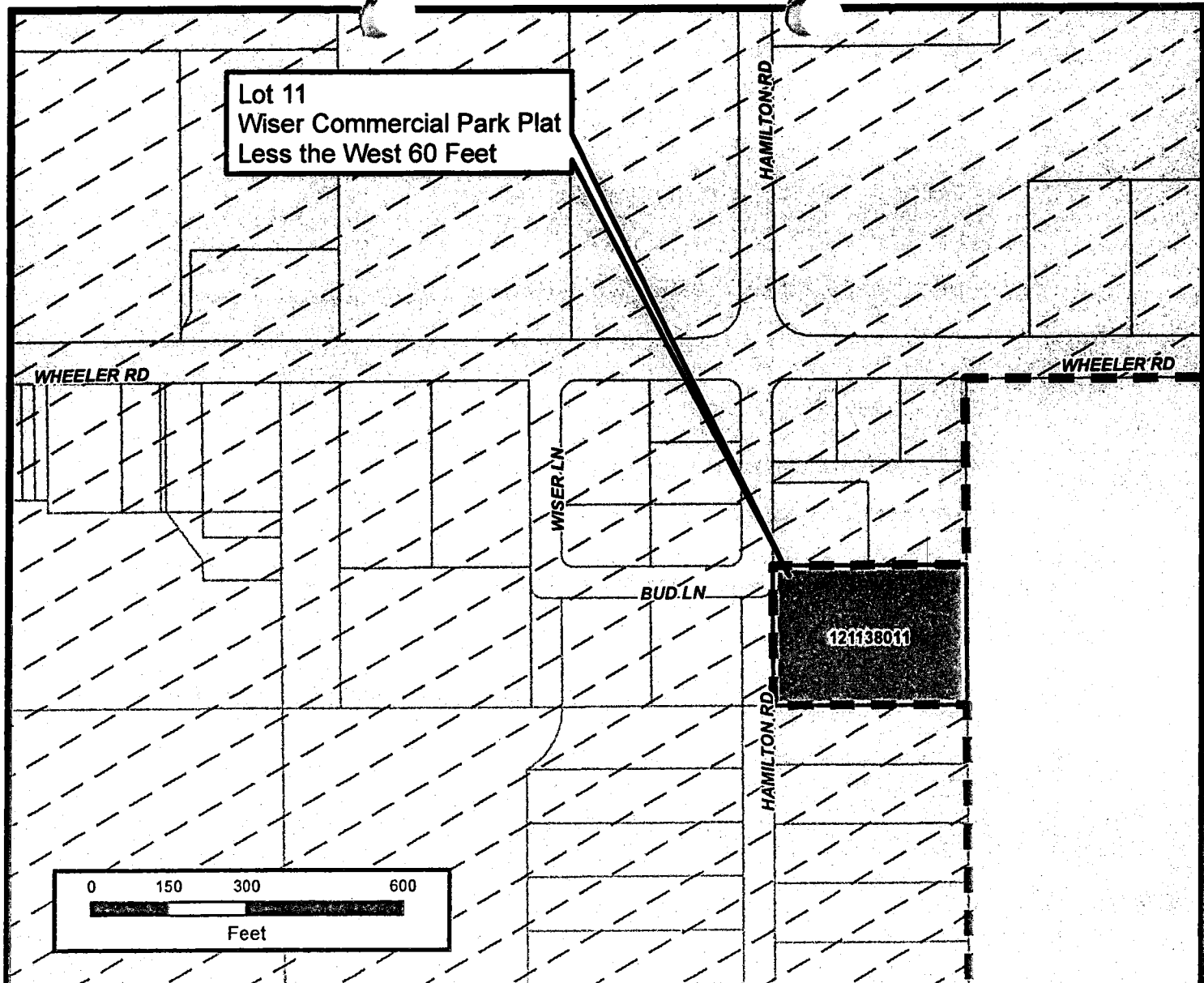
ATTEST:


W. Robert Taylor, Finance Director


Bill J. Ecret, Mayor

APPROVED AS TO FORM:


Katherine L. Kenison, City Attorney



- CITY LIMITS
- UGA BOUNDARY
- ALDER STREET NAMES
- LOTS
- LAKE
- GANT Annexation

Exhibit A



CITY OF MOSES LAKE
COMMUNITY DEVELOPMENT
PLANNING DIVISION

DRAWN: BKP

DATE: JULY 31, 2012



October 23, 2012

Dan Dietrich
Consolidated Disposal Service
P. O. Box 1154
Ephrata, WA 98823

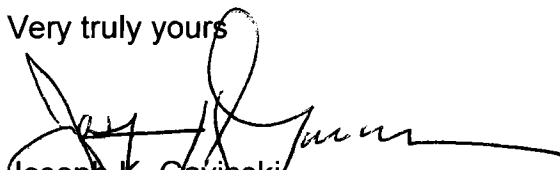
RE: Lot 11, Wisner Commercial Park Annexation

Dear Mr. Dietrich

On October 9, 2012 the City of Moses Lake adopted Ordinance No. 2660 which provided for the annexation of 2.29 acres of property located at 2826 NE Wisner Lane. The property is contiguous to the City of Moses Lake's corporate limits. The ordinance became effective on October 17, 2012. Pursuant to RCW 35A.14.900 the City grants Consolidated Disposal a franchise to continue collecting the solid waste from that area for ten years from October 17, 2012. Enclosed is a map showing the annexed area.

If you have any questions or comments, please do not hesitate to contact me.

Very truly yours



Joseph K. Gavinski
City Manager

JKG:jt

Enclosure

cc: Finance Director
Utility Account Technician
Lakeside Disposal, 2000 W. Broadway, Moses Lake, WA 98837