



TR-060428 (?)

RECEIVED  
RECORDS MANAGEMENT

06 MAR 17 PM 4:17

STATE OF WASH.  
UTIL. AND TRANSP.  
COMMISSION

March 13, 2006

Ms. Vicki Elliott  
Utilities and Transportation Commission  
Transportation Safety Section  
P.O. Box 47250  
Olympia, WA 98504-7250

**RE: Request for close clearance exemption for addition of rail dock shelters and awning under WAC 480-60-050**

Sheets Unlimited at 301 SW 27<sup>th</sup> St in Renton unloads a good percentage of raw material from railcars on a rail line bordering its' West side. During rainy weather conditions, the dock plates become very slick and water is tracked into the facility. The large clamp trucks used to unload large paper rolls, when carrying a full load can weigh as much as 28,000 lbs. The wet surface causes slipping and sliding of the trucks as they negotiate their way around the warehouse and in the railcars themselves. This makes for a very concerning situation and per rational requires prevention. For this reason we wish to apply a for close clearance exemption in order to install rail weather shelters on our building.

The center of the rail line itself at its closest sits 9' from the building. The dock shelters retracted project 9" from the building. This makes us only 3" over the 8'6" guideline for this addition on the door that is closest to the line. However, in order to make the rail shelter completely effective it also requires the installation of an awning which projects 18" from the top of the shelter at approximately 15' from the ground.

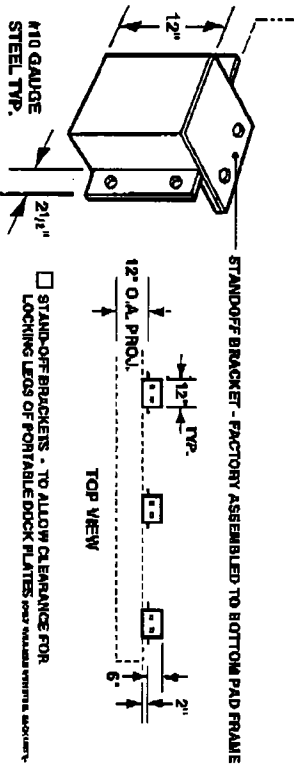
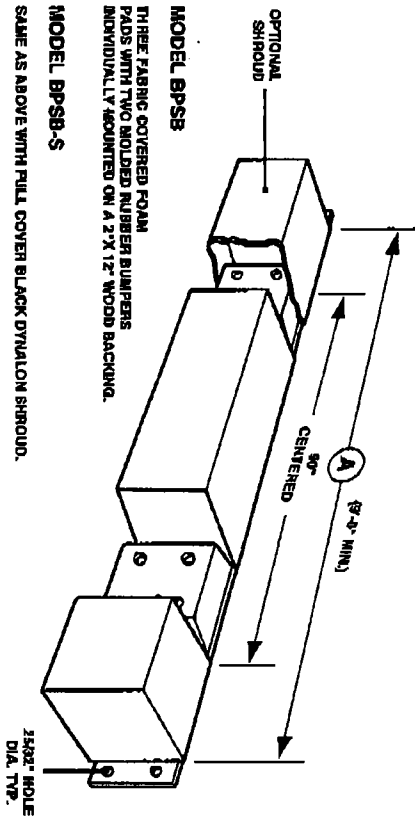
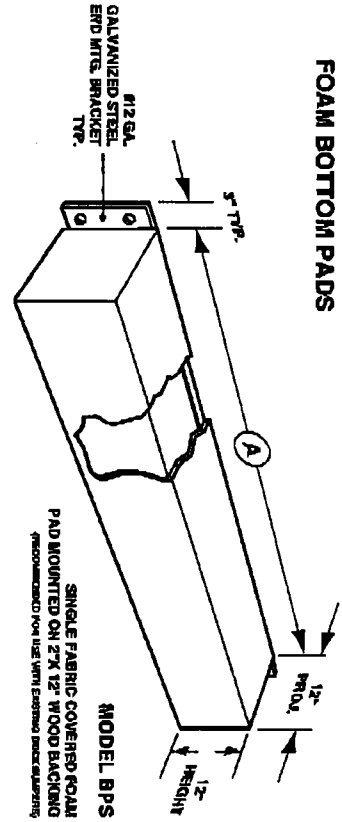
Attached are some specification sheets for the rail shelters and awnings we are considering installing. There will be 5 in all. Please consider our request for this exemption with the knowledge that the safety of our employees is our greatest concern. If you or anyone on your staff have the need for additional information or a site evaluation then please contact me at (425) 291-3474.

Please send any correspondences or information to myself, Dina Carnes - C/O Alliance Packaging LLC, 1000 SW 43<sup>rd</sup> St, Renton, WA 98055.

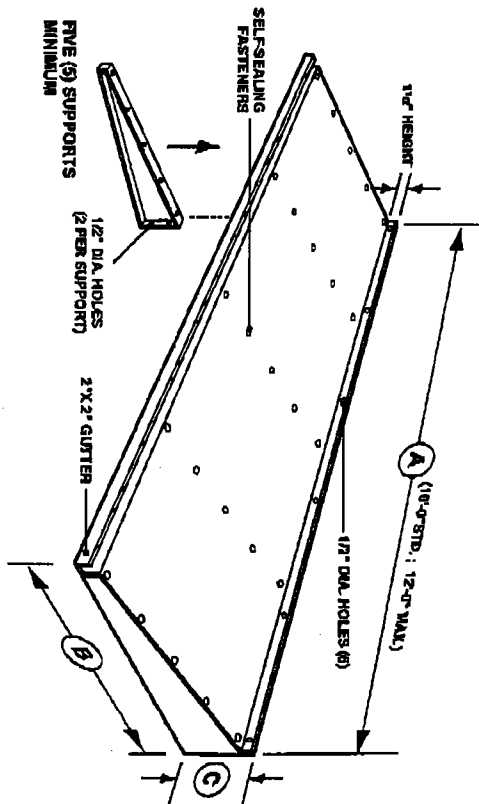
Sincerely,

*Dina M. Carnes*  
Dina M. Carnes  
Corporate Maintenance Manager

**FOAM BOTTOM PADS**



**METAL HOODS**  
(PRE-ASSEMBLED AT FACTORY)



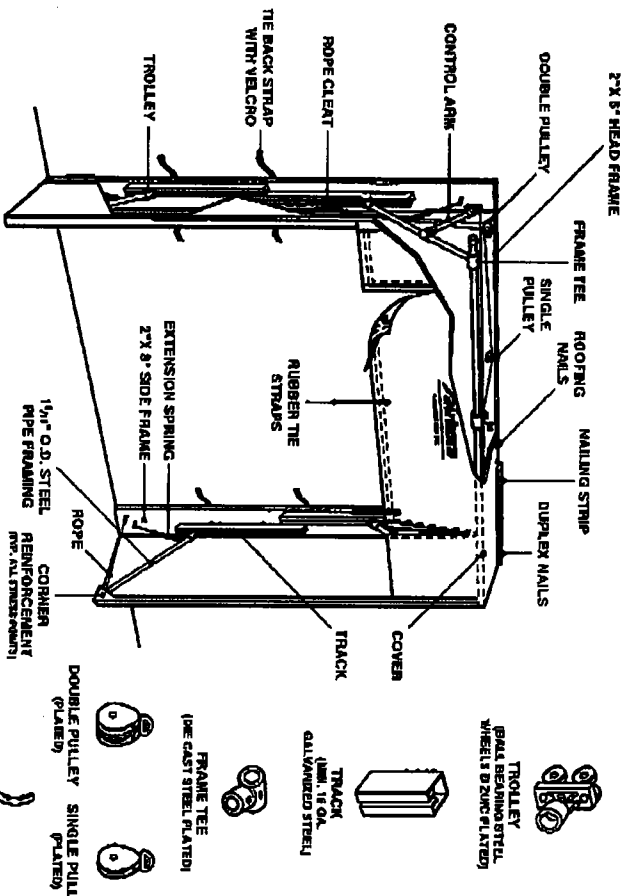
**OPTIONAL EQUIPMENT**  
ALL SERIES

<input type="checkbox"/> MODEL MH1600	16"	7'	18	528
<input type="checkbox"/> MODEL MH2400	24"	9'	18	848
<input type="checkbox"/> MODEL MH3600	36"	11'	14	1324

- MODEL BPS
- MODEL BPSB
- MODEL BPSB-S
- MODEL BPSB
- DYNALON
- DYNALON
- NOISHT BACK
- FORMED STEEL BACK
- MODEL BPSB-S
- "A" WIDTH
- BASE FABRIC
- 63 40 OZ. VINYL
- 63 40 OZ. VINYL
- COLOR
- OPTIONS
- FORMED STEEL BACK
- (PAINTED)

**Fairborn**  
FAIRBORN USA, INC.  
P.O. BOX 931 • 305 BROADVIEW STREET  
UPPER SANDUSKY, OHIO 44881  
800-352-1188 • 419-234-9817 • FAX 419-234-4880  
VISIT US AT: WWW.FAIRBORNU.SA.COM

JOB: \_\_\_\_\_  
LOCATION: \_\_\_\_\_  
CONTRACTOR: \_\_\_\_\_  
APPROVED BY SIGNATURE: \_\_\_\_\_  
ARCHITECT: \_\_\_\_\_



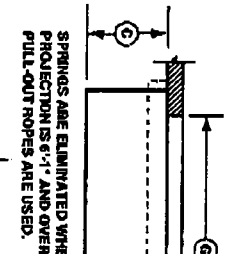
**SERIES 4000**  
3-SIDED FRAME, 3-SIDED COVER

**SERIES 4200**  
4-SIDED FRAME, 4-SIDED COVER

**SERIES 4100**  
4-SIDED FRAME, 3-SIDED COVER

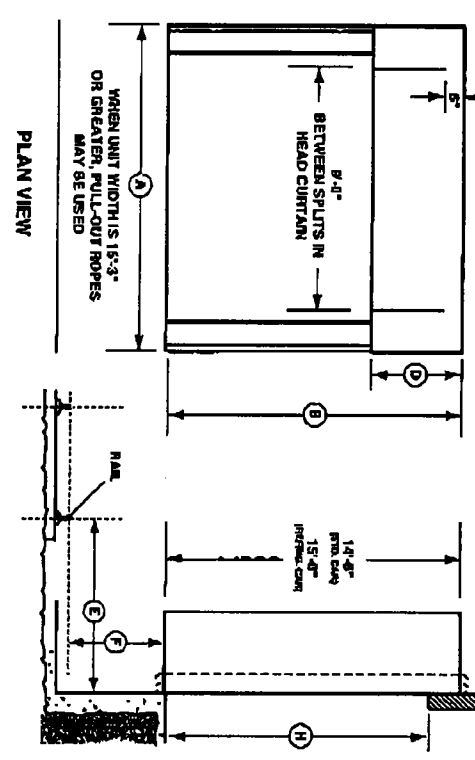
**SERIES 4100**  
4-SIDED FRAME, 3-SIDED COVER

SERIES 4100 AND 4200: RECOMMENDED BOTTOM TO BE 1'-0" BELOW DOCK LEVEL



**SERIES 4000**  
RAIL SHELTER

4000  4100  4200



**GENERAL INFORMATION**

- \*E\* DISTANCE BETWEEN CENTER LINE NEAREST RAIL AND BUILDING FACE
  - \*F\* DOCK HEIGHT FROM TOP OF RAIL
  - \*G\* DOOR WIDTH
  - \*H\* DOOR HEIGHT
  - DISTANCE BETWEEN DOORS
  - CLEARANCE ABOVE DOOR
  - PERMANENT RAIL RAMP
  - CANTILEVER DOCK
  - PULL
  - OUTSIDE SLIDING DOCK DOOR
- FABRIC
- 1001  1005  1008
- 1004  1006
- UNIT DATA
- \*K\* UNIT WIDTH
- (RECOMMENDED, \*L\* INCREMENTS) DISTANCE BETWEEN UNIT WIDTHS

**\*B\* UNIT HEIGHT**

- RECOMMENDED: \*L\* INCREMENTS
- DISTANCE BETWEEN UNIT HEIGHTS
- \*C\* UNIT PROJECTION
- DISTANCE BETWEEN UNIT PROJECTIONS
- \*D\* HEAD CURTAIN LENGTH

**OPTIONAL EQUIPMENT**

- FORMED STEEL FRAMING (SEE 10000)
- PAINTED  GALVANIZED
- RECESSED HARDWARE
- PULL ROPE ASSEMBLY D HEAD CURTAIN
- COVERED ROOF FACE
- NON-ROT WOOD PRESERVATIVE
- BLOW OUT BOTTOM (SEE 10000)



Fairborn USA INC.  
P.O. BOX 151 - 245 BROADVIEW STREET  
UPPER SANDUSKY, OHIO 44851  
419-292-3198 • 419-294-1987 • FAX: 419-294-1180  
VISIT US AT: WWW.FAIRBORNU.SA.COM

JOB: \_\_\_\_\_

LOCATION: \_\_\_\_\_

CONTRACTOR: \_\_\_\_\_

APPROVED BY SIGNATURE: \_\_\_\_\_

ARCHITECT: \_\_\_\_\_