

**BEFORE THE WASHINGTON  
UTILITIES & TRANSPORTATION COMMISSION**

WASHINGTON UTILITIES AND TRANSPORTATION COMMISSION,

Complainant,

v.

PUGET SOUND ENERGY

Respondent.

---

DOCKET NOS. UE-190529 and UG-190530 (*Consolidated*)

**J. RANDALL WOOLRIDGE ON BEHALF OF PUBLIC COUNSEL UNIT**

**EXHIBIT JRW-7**

Utility Capital Cost Indicators

November 22, 2019

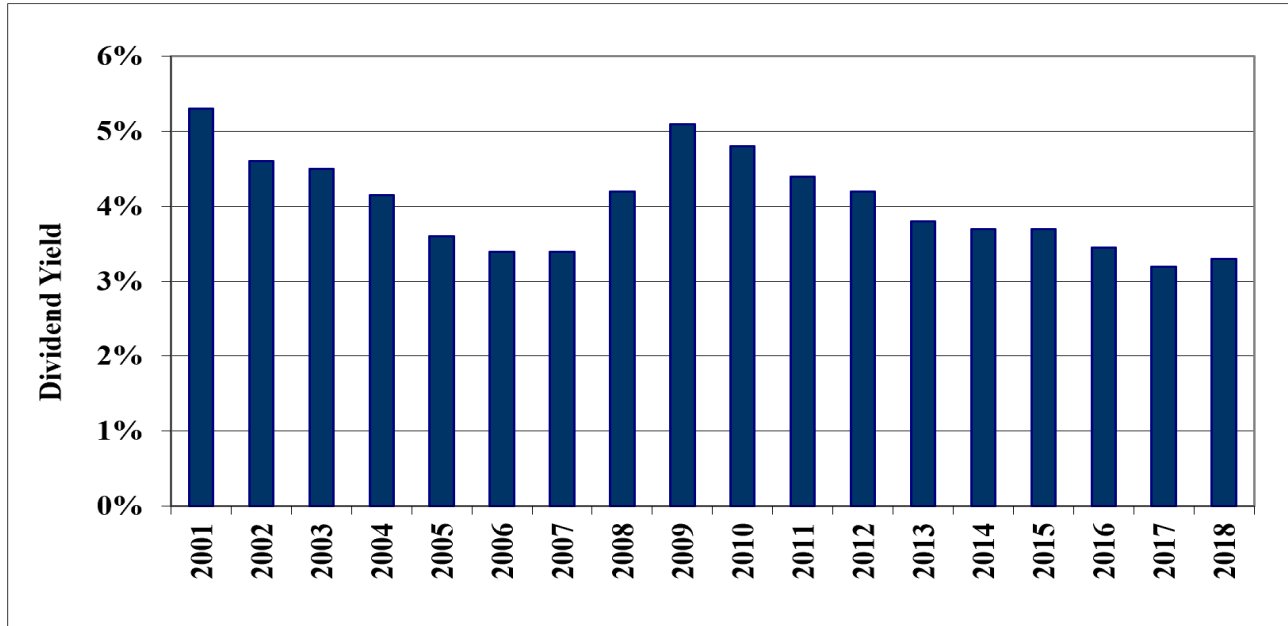
Exhibit JRW-7  
Long-Term 'A' Rated Public Utility Bonds



Data Source: Mergent Bond Record

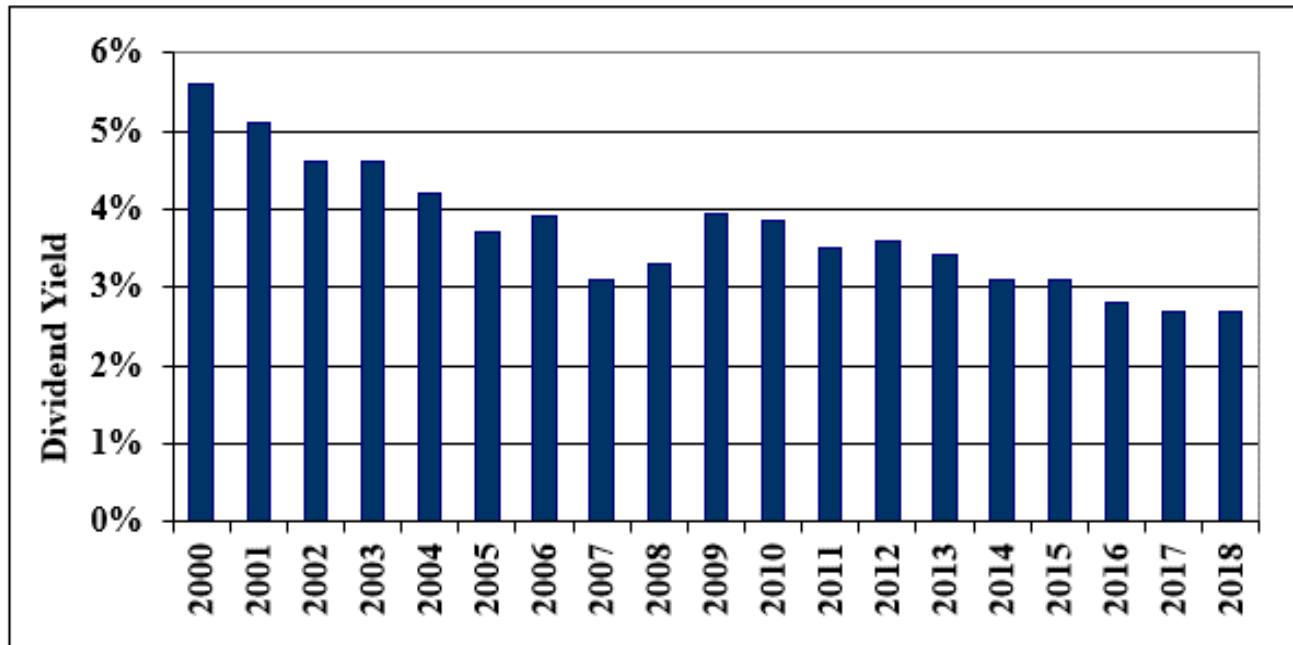
Exhibit JRW-7

Panel A  
Electric Utility Average Dividend Yield



Data Source: Value Line Investment Survey.

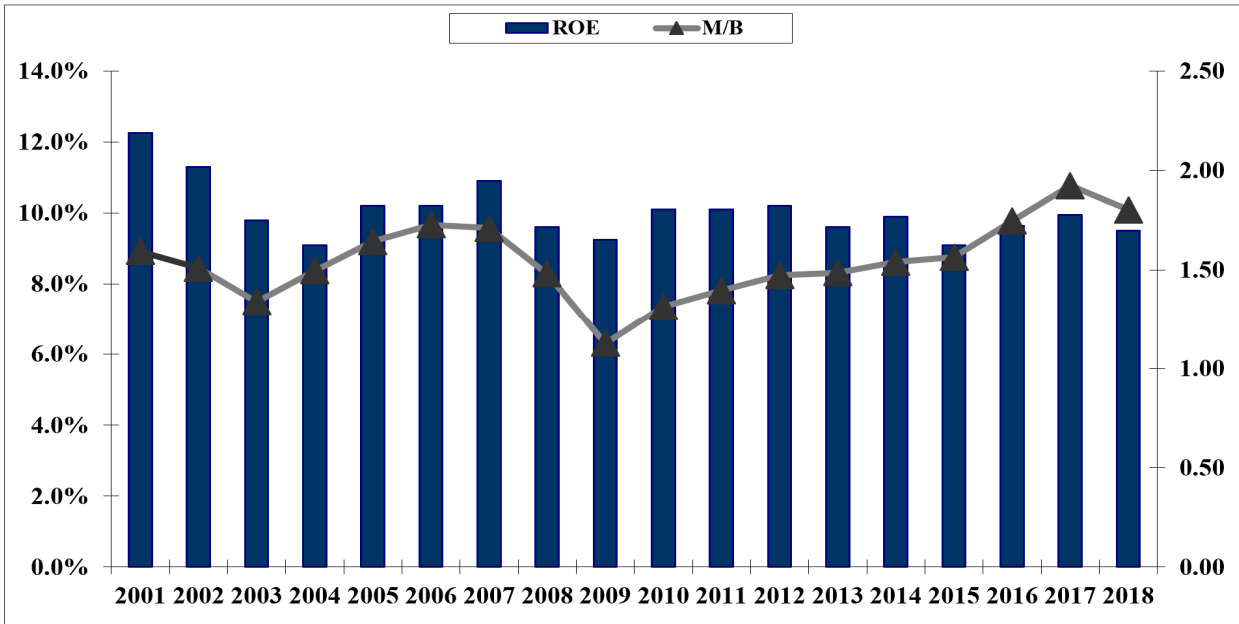
Panel B  
Gas Distribution Company Average Dividend Yield



Data Source: Value Line Investment Survey.

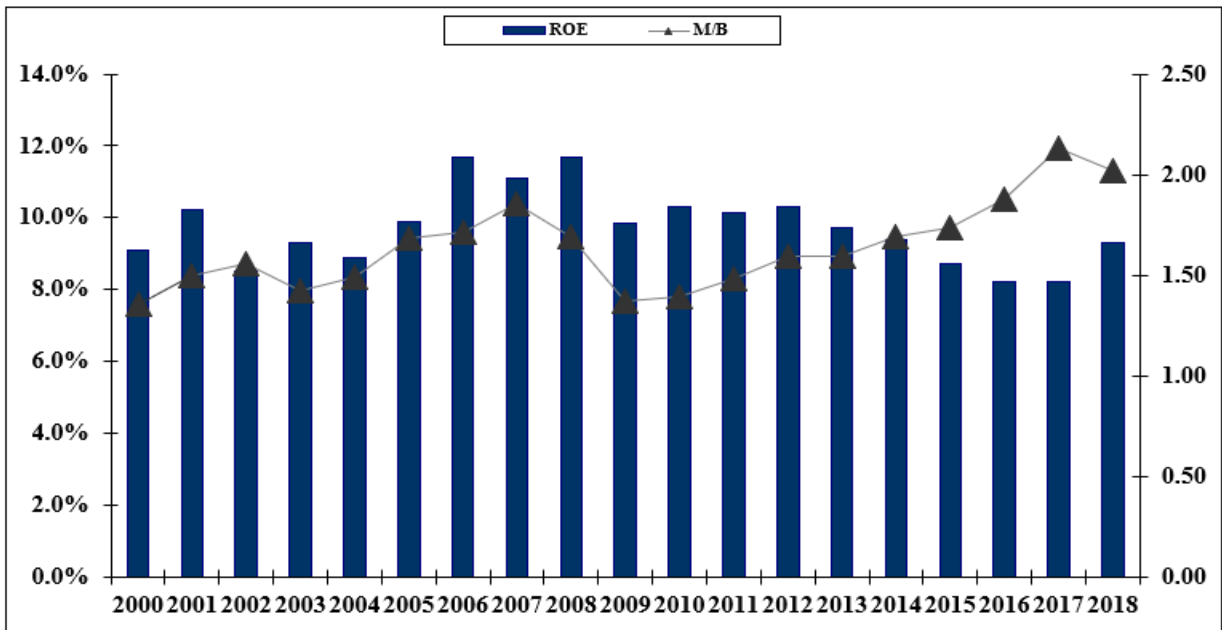
Exhibit JRW-7

Panel A  
 Electric Utility Average Return on Equity and Market-to-Book Ratios



Data Source: Value Line Investment Survey.

Panel B  
 Gas Distribution Company Average Return on Equity and Market-to-Book Ratios



Data Source: Value Line Investment Survey.

Exhibit JRW-7  
Industry Average Betas\*  
Value Line Investment Survey Betas\*\*  
22-Jan-19

Rank	Industry	Beta	Rank	Industry	Beta	Rank	Industry	Beta
1	Petroleum (Producing)	1.71	34	Telecom. Equipment	1.15	67	Medical Services	1.01
2	Metals & Mining (Div.)	1.64	35	Internet	1.15	68	Recreation	1.01
3	Natural Gas (Div.)	1.63	36	Financial Svcs. (Div.)	1.15	69	IT Services	1.01
4	Oilfield Svcs/Equip.	1.61	37	Retail (Hardlines)	1.14	70	Med Supp Non-Invasive	0.99
5	Maritime	1.51	38	Semiconductor Equip	1.14	71	Telecom. Services	0.99
6	Steel	1.49	39	Entertainment Tech	1.13	72	Retail Store	0.98
7	Oil/Gas Distribution	1.40	40	Publishing	1.13	73	Pharmacy Services	0.98
8	Metal Fabricating	1.37	41	Computer Software	1.13	74	Information Services	0.97
9	Chemical (Specialty)	1.34	42	Paper/Forest Products	1.13	75	Investment Co.(Foreign)	0.96
10	Chemical (Diversified)	1.33	43	Precision Instrument	1.12	76	Healthcare Information	0.96
11	Pipeline MLPs	1.33	44	Public/Private Equity	1.12	77	Funeral Services	0.95
12	Heavy Truck & Equip	1.31	45	Retail Automotive	1.12	78	Med Supp Invasive	0.95
13	Chemical (Basic)	1.30	46	Power	1.12	79	Reinsurance	0.92
14	Building Materials	1.30	47	Wireless Networking	1.12	80	Environmental	0.91
15	Petroleum (Integrated)	1.30	48	Retail Building Supply	1.11	81	Cable TV	0.90
16	Homebuilding	1.28	49	Bank (Midwest)	1.11	82	Insurance (Prop/Cas.)	0.90
17	Railroad	1.27	50	Packaging & Container	1.11	83	Thrift	0.89
18	Auto Parts	1.27	51	Furn/Home Furnishings	1.11	84	Restaurant	0.88
19	Biotechnology	1.27	52	Human Resources	1.10	85	Tobacco	0.88
20	Engineering & Const	1.25	53	Drug	1.10	86	Household Products	0.86
21	Office Equip/Supplies	1.24	54	Advertising	1.10	87	Investment Co.	0.85
22	Hotel/Gaming	1.24	55	Shoe	1.09	88	Beverage	0.83
23	Automotive	1.24	56	Bank	1.09	89	Food Processing	0.82
24	Insurance (Life)	1.24	57	Newspaper	1.08	90	R.E.I.T.	0.82
25	Semiconductor	1.21	58	Toiletries/Cosmetics	1.08	91	Precious Metals	0.82
26	Machinery	1.20	59	Entertainment	1.07	92	Retail/Wholesale Food	0.80
27	Air Transport	1.20	60	Telecom. Utility	1.07	93	Water Utility	0.70
28	Electrical Equipment	1.20	61	Foreign Electronics	1.07	94	Natural Gas Utility	0.67
29	Electronics	1.20	62	Aerospace/Defense	1.05	95	Electric Util. (Central)	0.63
30	Trucking	1.19	63	Industrial Services	1.05	96	Electric Utility (West)	0.62
31	E-Commerce	1.18	64	Apparel	1.05	97	Electric Utility (East)	0.55
32	Computers/Peripherals	1.16	65	Educational Services	1.03			
33	Diversified Co.	1.16	66	Retail (Softlines)	1.02		Mean	1.10

\* Industry averages for 97 industries using *Value Line*'s database of 1,710 companies.

\*\* *Value Line* computes betas using monthly returns regressed against the New York Stock Exchange Index for five years.

These betas are then adjusted as follows:  $VL \text{ Beta} = \{(2/3) * \text{Regressed Beta}\} + \{(1/3) * (1.0)\}$  to account to tendency for Betas to regress toward average of 1.0. See M. Blume, "On the Assessment of Risk," *Journal of Finance*, March 1971.