

**Exhibit No. \_\_\_ C (KMR-5C)  
Docket No. UT-061625  
Witness: Kristen M. Russell  
REDACTED VERSION**

**BEFORE THE WASHINGTON  
UTILITIES AND TRANSPORTATION COMMISSION**

**In the Matter of the Petition of**

**QWEST CORPORATION**

**To be Regulated Under an Alternative  
Form of Regulation Pursuant to RCW  
80.36.135**

**DOCKET NO. UT-061625**

**EXHIBIT TO  
TESTIMONY OF**

**Kristen M. Russell**

**STAFF OF  
WASHINGTON UTILITIES AND  
TRANSPORTATION COMMISSION**

**Performance Measure Line Graphs and Source Document**

**January 29, 2007**

**REDACTED PER PROTECTIVE ORDERS IN DOCKET NO. UT-061625**

5-day rule

Company	July 2005	Aug 2005	Sept 2005	Oct 2005	Nov 2005	Dec 2005	Jan 2006	Feb 2006	Mar 2006	Apr 2006	May 2006	Jun 2006	July 2006	Aug 2006	Sept 2006	Oct 2006	Simple Avg
CenturyTel	97.96	98.44	98.81	98.65	98.79	99.14	98.55	97.99	98.89	99.11	pend	99.77	99.76	99.58	99.63	99.95	99.00
Verizon	87.76	92.83	94.66	94.29	93.89	93.38	93.93	95.51	96.55	96.02	97.41	96.61	95.51	95.96	95.98	92.79	94.57
Qwest	98.37	98.00	98.49	98.32	98.18	98.02	97.72	98.39	98.72	98.89	98.96	98.79	98.80	98.91	98.93	98.92	98.53
AT&T																	
MCImetro																	
SBC																	
Embarq																	

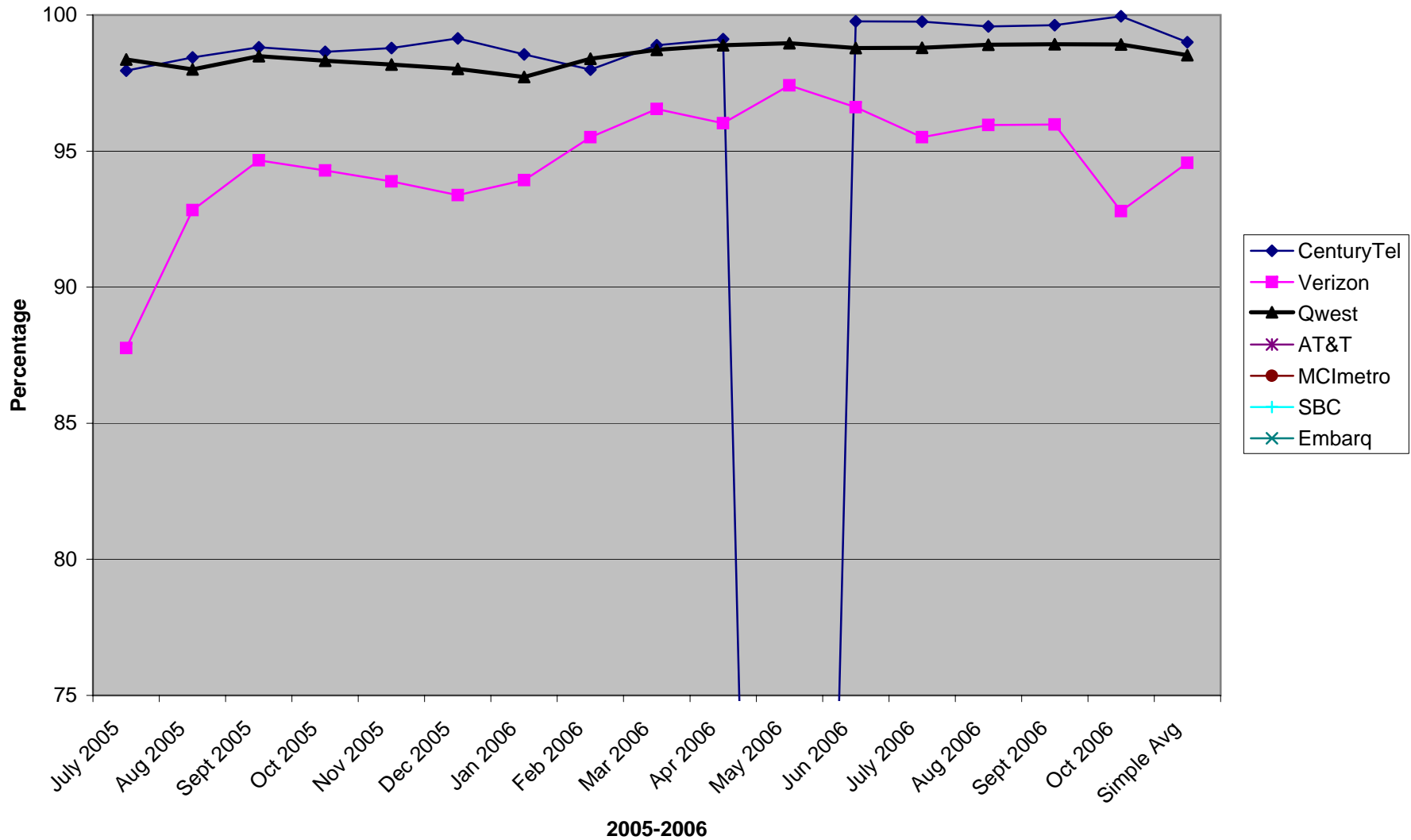
48-hour rule

Company	July 2005	Aug 2005	Sept 2005	Oct 2005	Nov 2005	Dec 2005	Jan 2006	Feb 2006	Mar 2006	Apr 2006	May 2006	Jun 2006	July 2006	Aug 2006	Sept 2006	Oct 2006	Simple Avg
CenturyTel	98.37	99.17	99.75	98.32	96.75	97.16	97.80	97.77	97.10	98.49	97.58	97.79	97.71	95.88	98.71	98.30	97.92
Verizon	98.66	98.96	99.38	98.54	98.19	96.37	93.93	99.31	98.43	98.92	98.73	98.53	98.63	98.96	98.69	98.68	98.31
Qwest	98.96	98.17	99.00	98.24	98.46	97.33	93.62	97.82	99.33	99.40	99.17	99.33	98.60	99.41	99.30	99.51	98.48
AT&T																	
MCImetro																	
SBC																	
Embarq																	

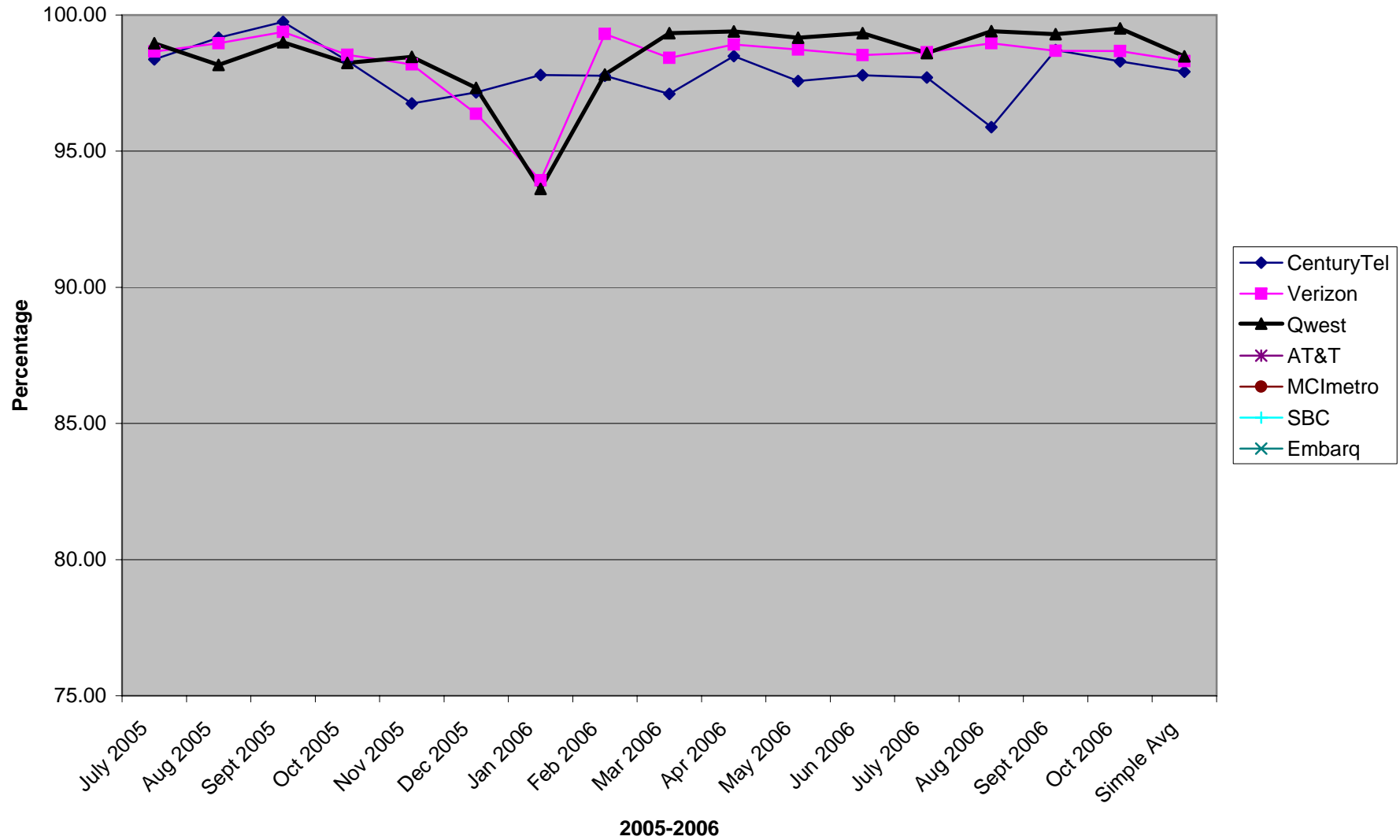
72-hour rule

Company	July 2005	Aug 2005	Sept 2005	Oct 2005	Nov 2005	Dec 2005	Jan 2006	Feb 2006	Mar 2006	Apr 2006	May 2006	Jun 2006	July 2006	Aug 2006	Sept 2006	Oct 2006	Simple Avg
CenturyTel	98.84	99.57	98.31	99.23	98.55	98.84	98.78	98.96	98.88	99.16	97.02	97.34	94.72	96.51	97.09	98.42	98.14
Verizon	98.56	99.08	98.85	98.39	98.36	98.99	93.63	99.44	99.44	99.23	99.28	99.42	98.71	98.80	99.06	98.99	98.64
Qwest	99.46	98.45	99.54	98.94	99.4	98.34	95.32	98.56	99.47	99.58	99.61	99.63	99.44	99.49	99.61	99.70	99.03
AT&T																	
MCImetro																	
SBC																	
Embarq																	

**5-day Installation**



### 48 Hour Repair Rule



### 72-Hour Repair Rule

