

**EXHIBIT NO. \_\_\_(RJA-6)**  
**DOCKET NO. UE-06 \_\_\_/UG-06 \_\_\_**  
**2006 PSE GENERAL RATE CASE**  
**WITNESS: RONALD J. AMEN**

**BEFORE THE  
WASHINGTON UTILITIES AND TRANSPORTATION COMMISSION**

**WASHINGTON UTILITIES AND  
TRANSPORTATION COMMISSION,**

**Complainant,**

**v.**

**PUGET SOUND ENERGY, INC.,**

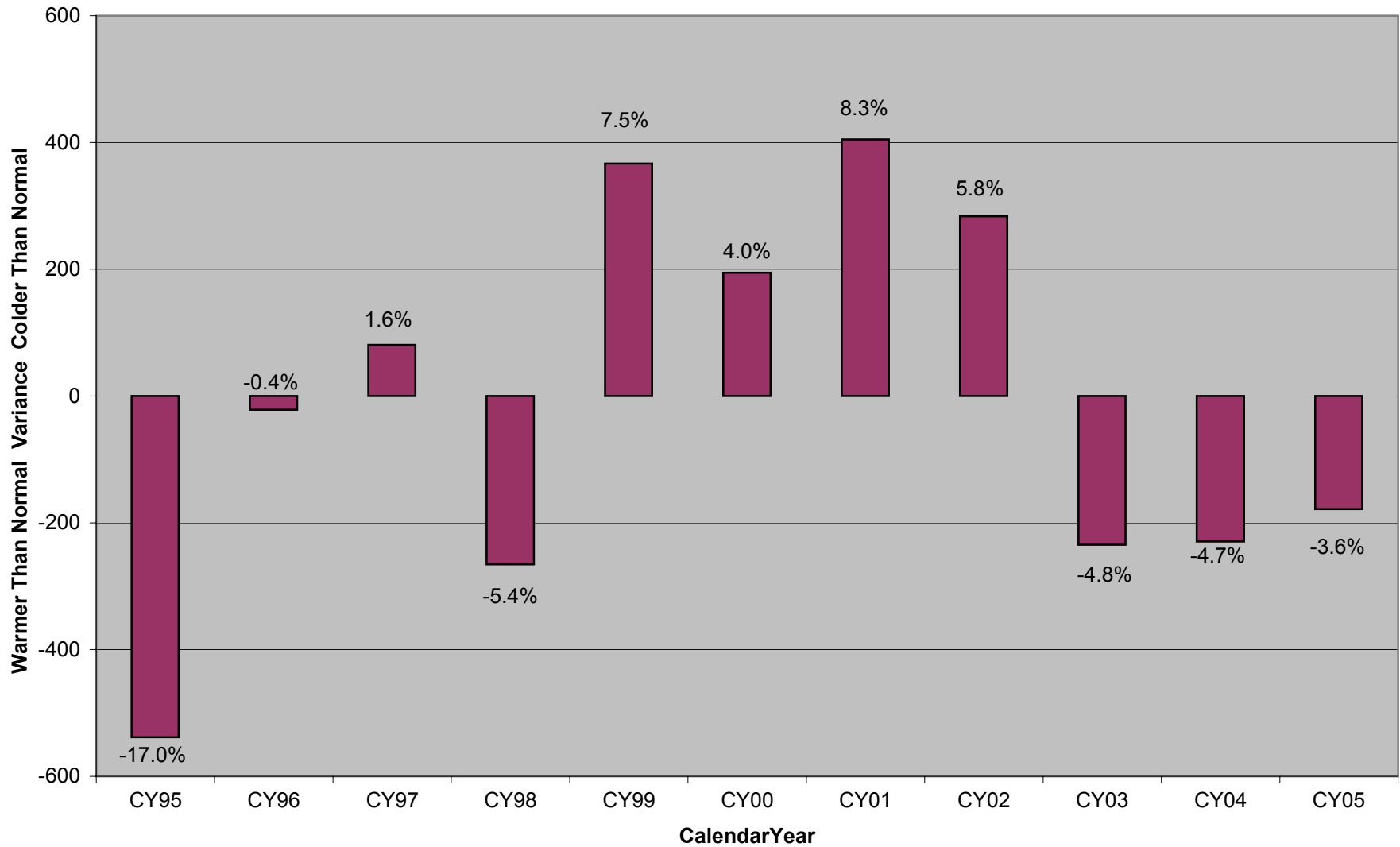
**Respondent.**

**Docket No. UE-06 \_\_\_**  
**Docket No. UG-06 \_\_\_**

**FIFTH EXHIBIT (NONCONFIDENTIAL)  
TO THE PREFILED DIRECT TESTIMONY OF  
RONALD J. AMEN  
ON BEHALF OF PUGET SOUND ENERGY, INC.**

**FEBRUARY 15, 2006**

### Annual Heating Degree Day Variance from Normal



### Puget Sound Energy Monthly Heating Degree Day Variance from Normal

