

## Enhanced Extended Loop Diagram

Figure 1: Point to Point EEL

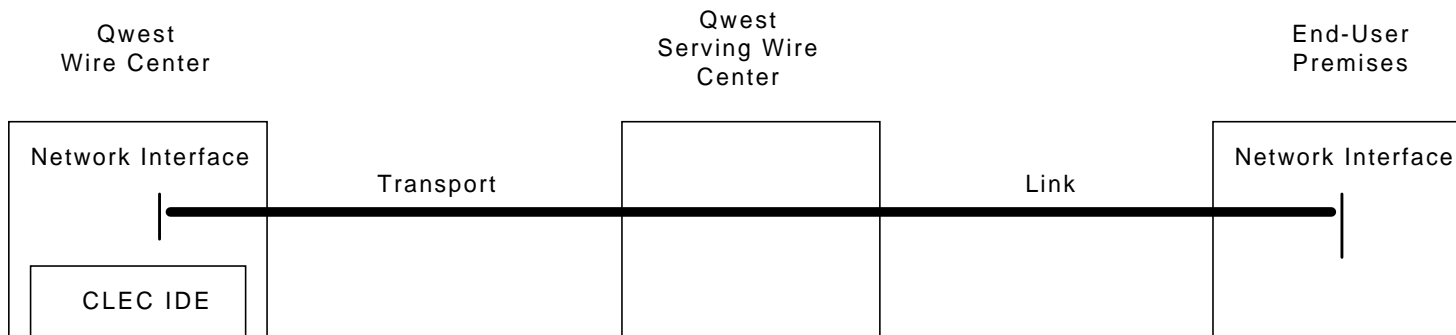
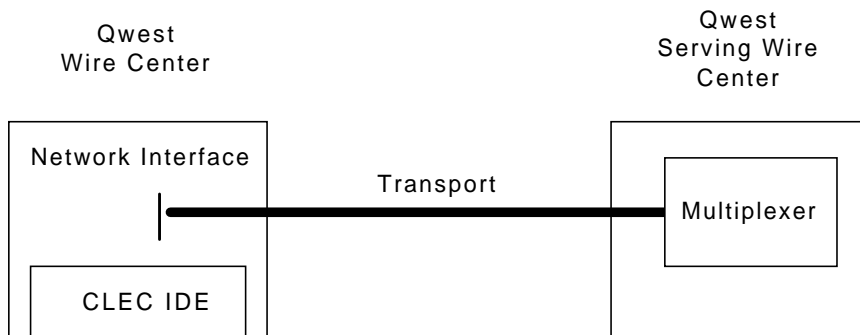
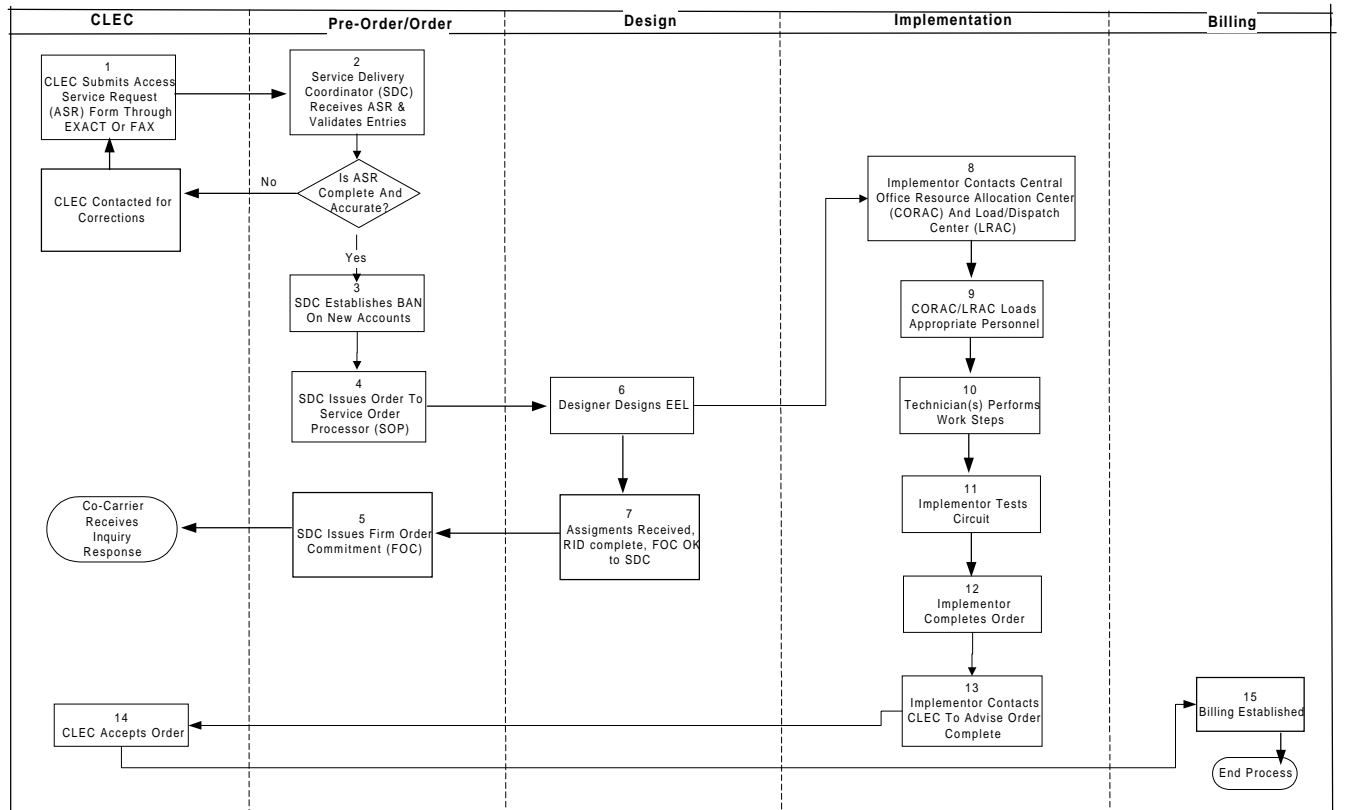


Figure 2: Multiplexed EEL



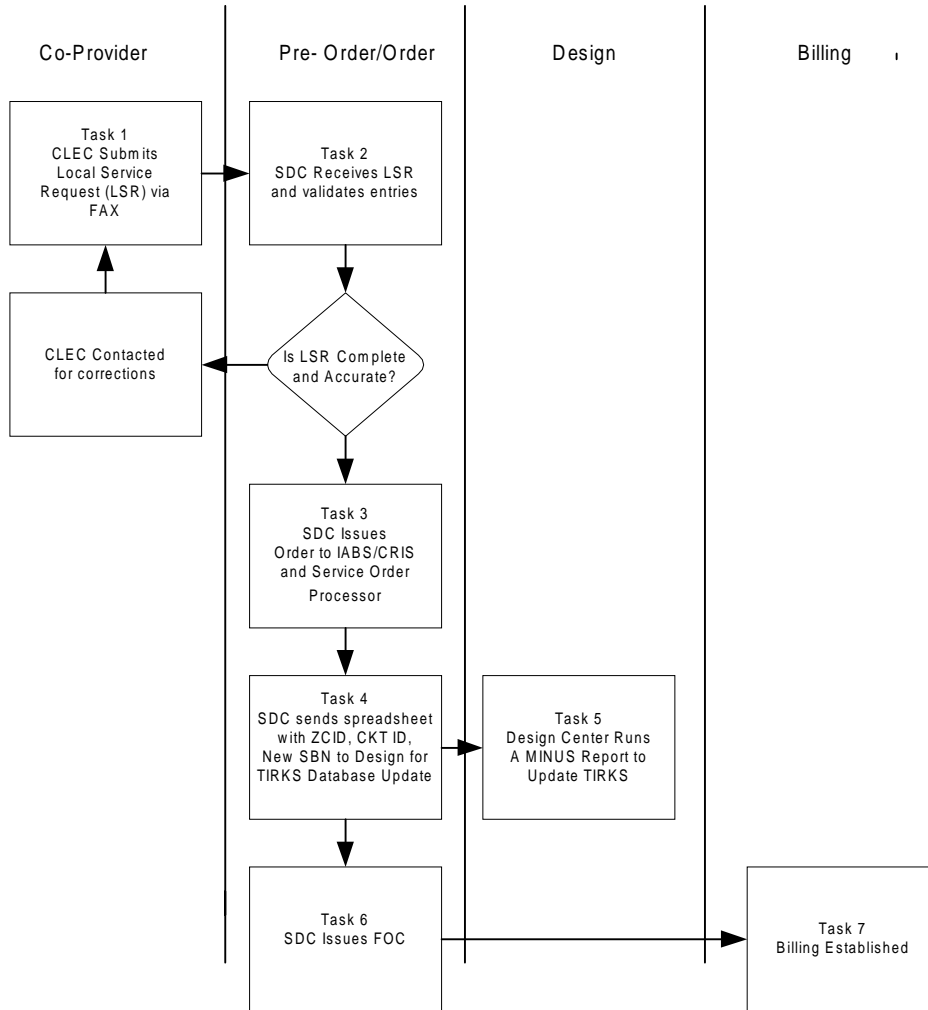
### Enhanced Extended Loop (EEL-P) Provisioning Process



## Enhanced Extended Loop (EEL-P) Provisioning Task List

Assoc. Task #	Process
1	Co-Provider Issues complete and accurate Access Service Request. These requests are issued through EXACT or by fax.
2	ASR and associated forms reviewed for completeness and accuracy by Service Delivery Coordinator (SDC). Contacts CLEC if necessary for corrections.
3	SDC establishes Billing Account Number (BAN) if necessary.
4	SDC issues order into the service order processor using appropriate intervals.
5	SDC receives OK from Designers (RID complete) and issues Firm Order Confirmation (FOC).
6	Unbundled Loop is designed in TIRKS
7	Design Center ensures Assignments are received, completes RID, and authorizes the SDC to issue FOC.
8	Implementor contacts Central Office Resource Allocation Center (CORAC) and the Load and Resource Allocation Center (LRAC).
9	CORAC/LRAC loads appropriate field personnel to perform work steps.
10	LNO, COT Technician(s) receive work request and complete work steps.
11	Implementor tests circuit
12	Implementor completes order and completes in WFA/C
13	Implementor contacts Co-Provider to advise order complete. CLEC accepts circuit.
14	Service orders completes and posts to begin billing.

### EEL-C Conversion Process Flow



## **EEL-C Conversion Task List**

<b>Task #</b>	<b>Activity</b>
1	Co_provider issues complete and accurate Local Service Request (LSR) via fax or IMA
2	Service Delivery Coordinator (SDC) receives LSR and validates entries.
3	SDC issues orders for records only for billing. One record order issued to stop billing of the existing circuit in IABS. A second record order establish billing for the circuit in CRIS.
4	SDC sends creates and sends spreadsheet containing ZCID, circuit ID, new special billing number (SBN) to Design Center to update TIRKS database.
5	SDC issues Firm Order Confirmation (FOC) to CLEC.
6	Designer runs a MINUS report to update SBN in TIRKS
7	Billing established in CRIS only.