



# Gasco Sediments Cleanup Action 2020 Pre-Design Investigation CDM Smith Kickoff



April 17, 2020

# Key PDI Field Staff Introductions (CDM Smith and Anchor QEA)

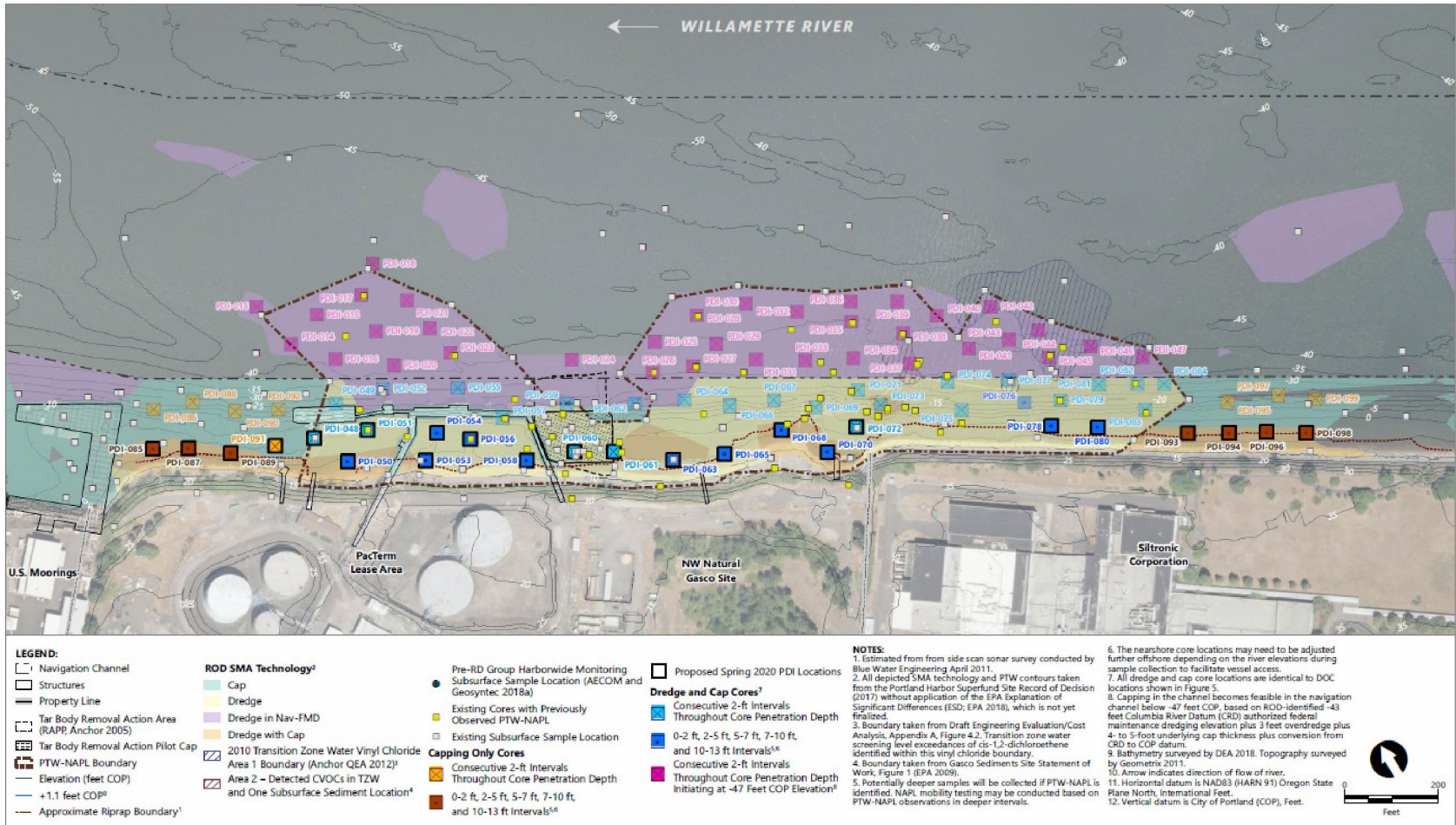
Name	Project Role	Cell	Email
<b>CDM Smith (Oversight on behalf of Hunter Young, EPA PM)</b>			
Lance Peterson	EPA Project Coordinator	(425) 417-5946	PetersonLE@cdmsmith.com
Jonni Wallingford	Oversight	(503) 320-6407	wallingfordjb@cdmsmith.com
Louisa Orr	Oversight	(503) 781-5044	orrlm@cdmsmith.com
<b>Anchor QEA</b>			
Ryan Barth	Project Manager	(206) 719-3605	rbarth@anchorqea.com
Nik Bacher	Field Manager	(206) 351-0951	nbacher@anchorqea.com
Cheronne Oreiro	Core Processing Lead	(206) 334-4992	coreiro@anchorqea.com
Calvin Douglas	Core Collection Lead	(206) 498-5398	cdouglas@anchorqea.com

# Overview of Remaining PDI Sampling Program

- Remaining PDI subsurface sediment: 24 locations (15-foot cores)
  - Principal threat waste nonaqueous phase liquid (PTW-NAPL) refinement and depth of contamination (DOC; 16 locations)
  - Capping demonstration (24 locations)
  - Additional analyses (24 locations)
  - Biogas generation potential (3 locations)
  - Barge dewatering and dredge material stabilization (4 locations), separate core
  - Disposal suitability (4 locations), separate core
  - Additional PTW-NAPL mobility (up to 6 locations determined in the field), to be submitted in forthcoming Field Change Request Form No. 11



# Subsurface Sediment Program



**Figure A-4**  
**Proposed Subsurface Capping Demonstration Cores**  
 Pre-Remedial Design Data Gaps Field Sampling Plan  
 Gasco Sediments Cleanup Action

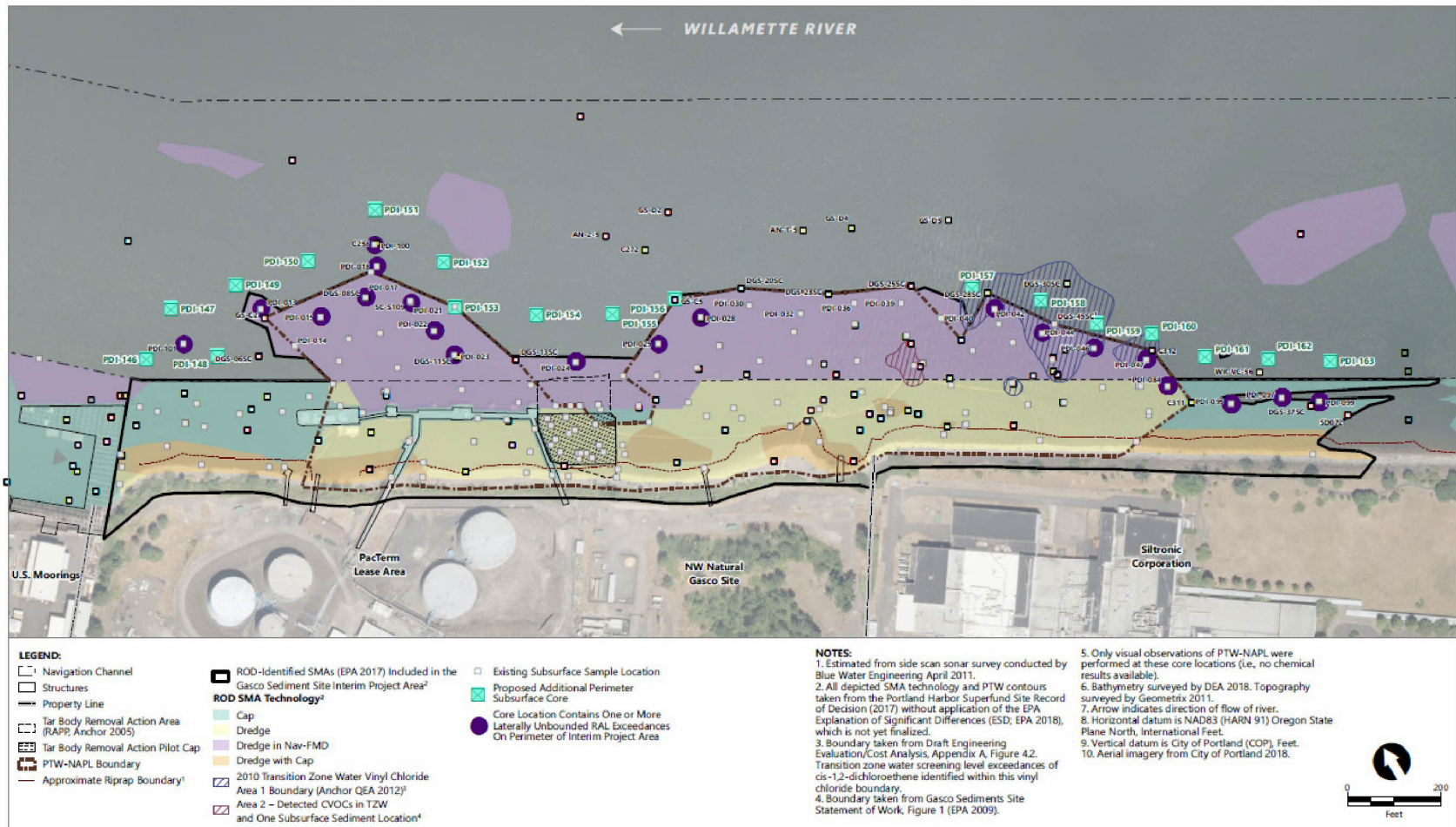




# Overview of Addition to PDI Sampling Program

- Additional perimeter subsurface sediment: 18 locations (20-foot cores)
  - PTW-NAPL refinement and DOC (all locations)
  - Capping demonstration (all locations)
  - Will analyze 0 to 1 foot (as surface sediment analyzed per plan)

# Additional Perimeter Subsurface Sediment Program



Publish Date: 2020/04/15, 1:35 PM | User: alexseur  
 Filepath: \\corca\gis\Jobs\NW\_Natural\_Gas\_0029\Gasco\_Sediments\Maps\Reports\POD2020SpringPlan\FSP\AQ\_Fig1\_AdditionalSampling.mxd



**Figure 1**  
 Proposed Additional Subsurface Sediment Core Locations to Laterally Bound ROD Table 21 Exceedances on Perimeter of Interim Project Area

Field Change Request No. 10  
 Gasco Sediments Cleanup Action



# Health and Safety



# Health and Safety

- Always keep TWIC card and Essential Services Documentation on you
  - If you do not have a TWIC, you will have to be with a TWIC card holder at all times
- Standard Level D Modified PPE: Gloves, PFD (if on/near water), hard hat (on boat when coring), rubber steel-toed boots, and safety glasses
  - COVID-19-specific PPE discussed on next slide
- A copy of the HASP (including the Anchor QEA Field Program COVID-19 Management Plan) will be on board the boat and in the processing area

# COVID-19 Health and Safety – General

- Adhere to the Anchor QEA Field Program COVID-19 Management Plan
  - Practice social distancing
  - Wash hands often and do not touch face
    - Sanitize work areas per the Anchor QEA Field Program COVID-19 Management Plan
  - Daily self-monitoring and documentation
  - Special COVID-19 PPE
    - Face shields
    - Personal digital thermometers
    - Face covering
    - Tyvek, replaced daily
    - Hand sanitizer, wipes, and bleach solution

# COVID-19 Health and Safety – Processing Area

- Create individual sections inside processing tent
  - Decon section, core processing section(s), bottle/labeling/packing section, Field Scribe section
  - Only one person in each section at a time
  - Face covering and gloves inside the tent
- Create individual sections inside processing tent
- Sanitize workspace often per the Anchor QEA Field Program COVID-19 Management Plan
- Set up individual areas in the field office trailer for each staff member's personal gear

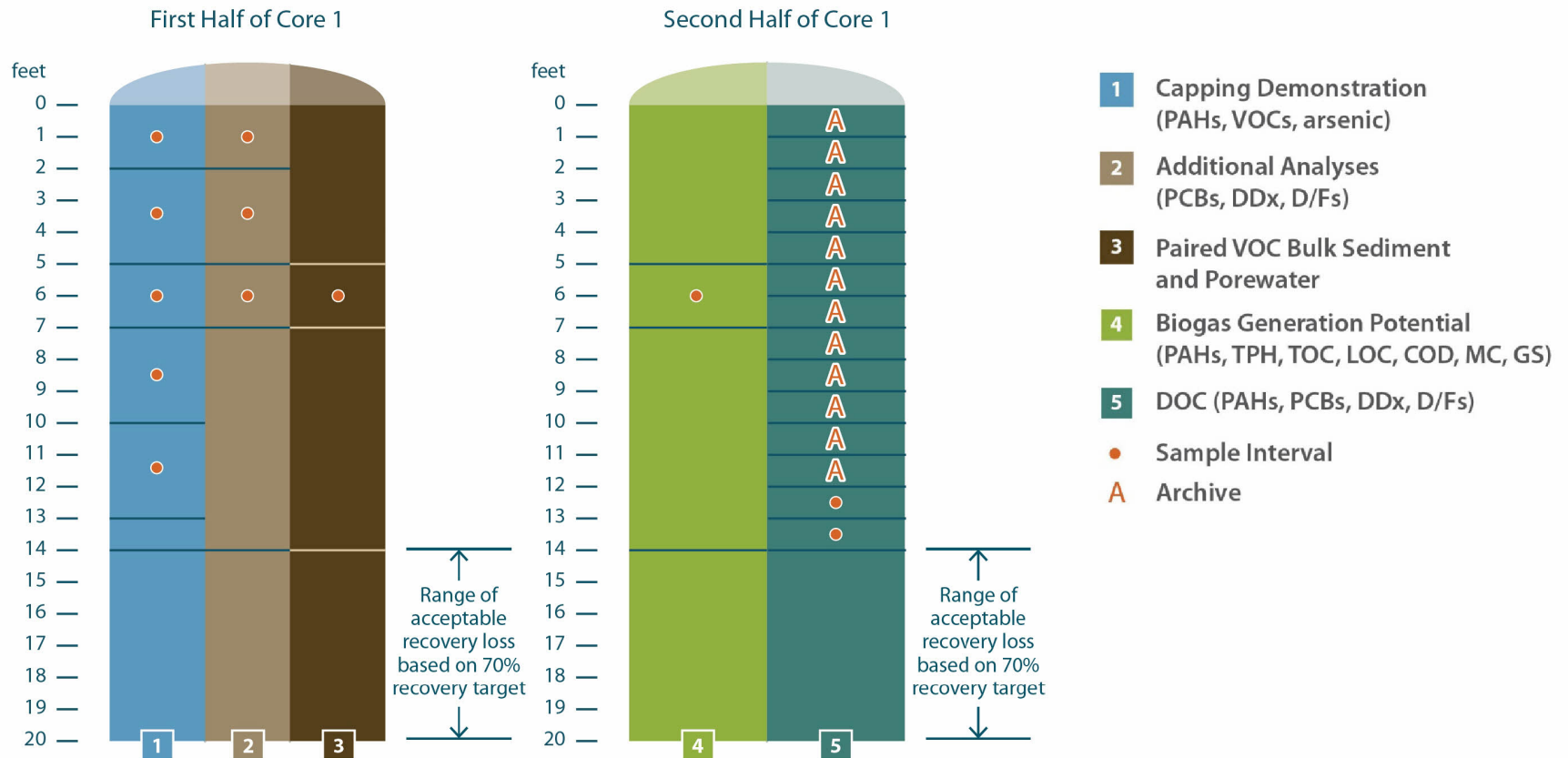


# COVID-19 Health and Safety – Boat-Specific

- Staff positioned to maintain social distancing, when possible
- There will be short periods of time where 6-foot separation will not be possible (moving core tube and sectioning)
  - Use face shields, surgical masks, and/or bandanas
- Tyvek and gloves as outer layer, replaced daily
- Daily lunch breaks at Cathedral Park
  - Honey Bucket and wash station will be available

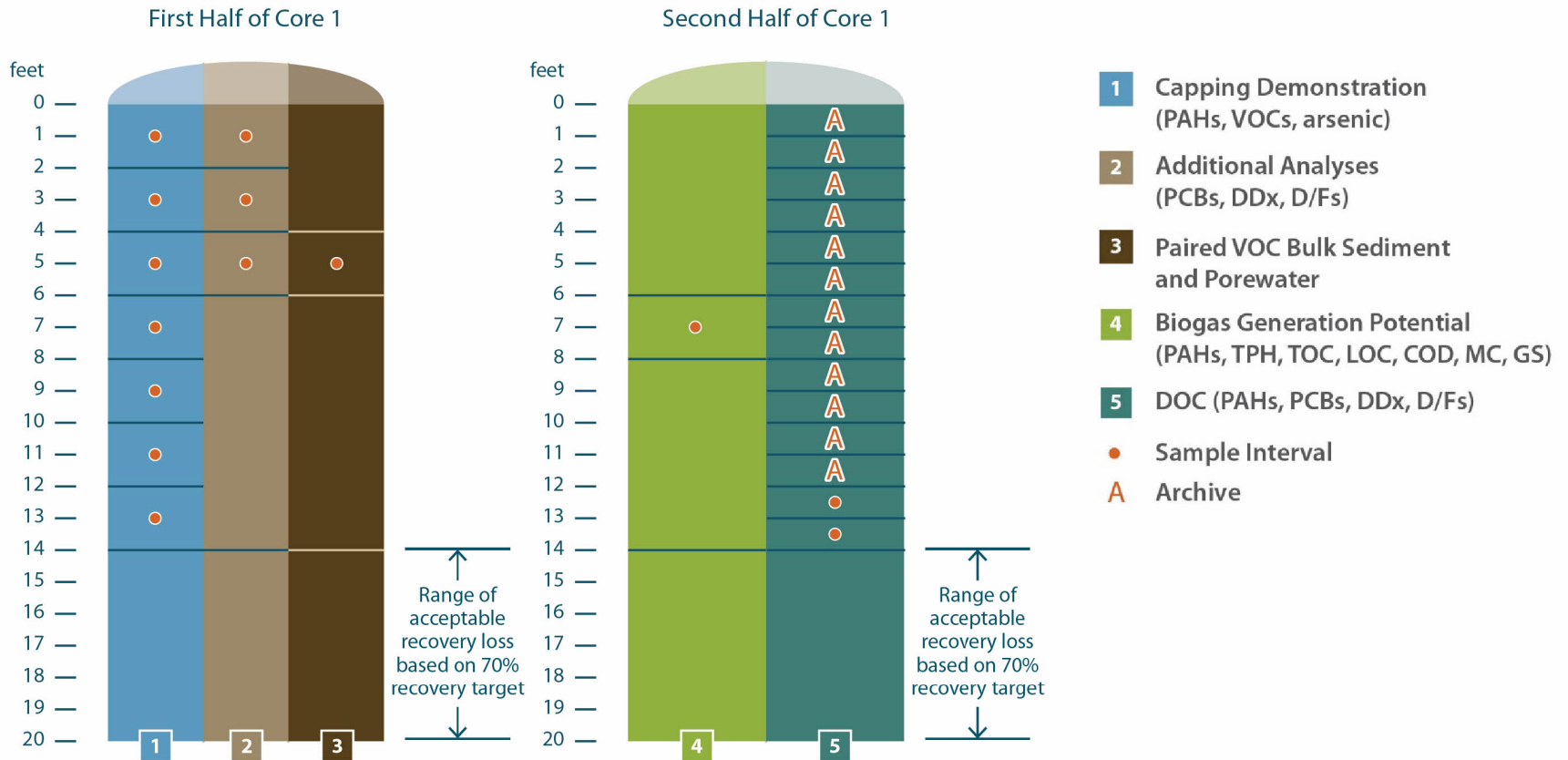
# Complexity of Sampling Program

# Core Processing: Nearshore Transect Outside of Navigation Channel (Shallow Region)

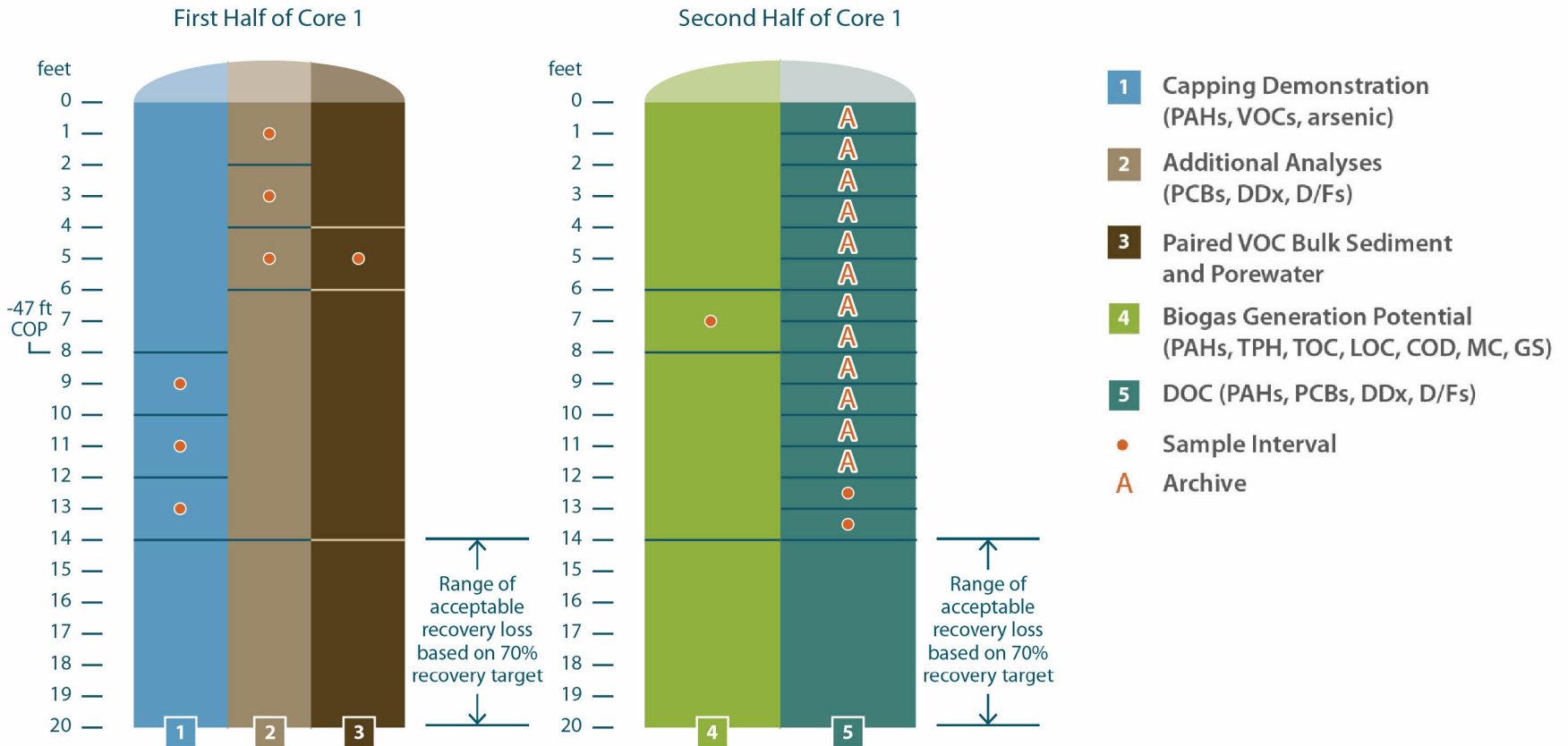




# Core Processing: Offshore Transect Outside of Navigation Channel (Intermediate Region)

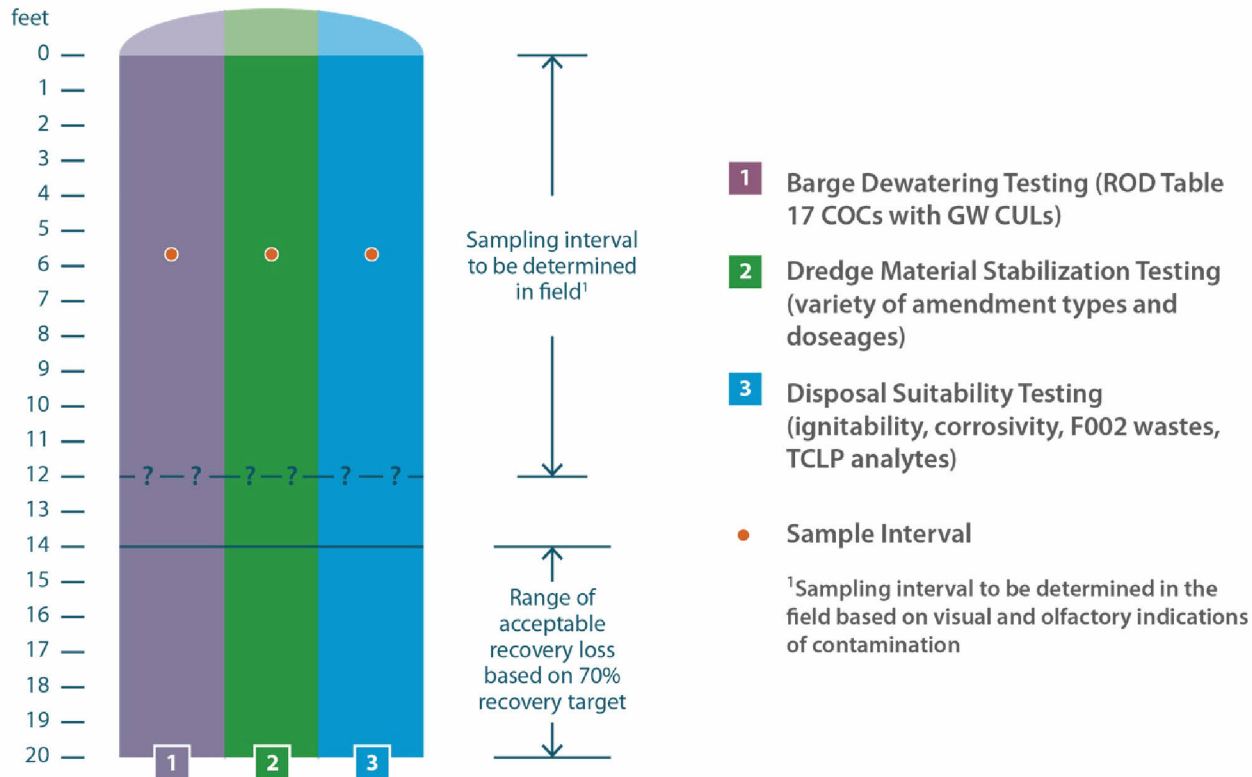


# Core Processing: Inside Navigation Channel



# Core Processing: Barge Dewatering/Dredge Material Stabilization and Dredge Suitability Locations

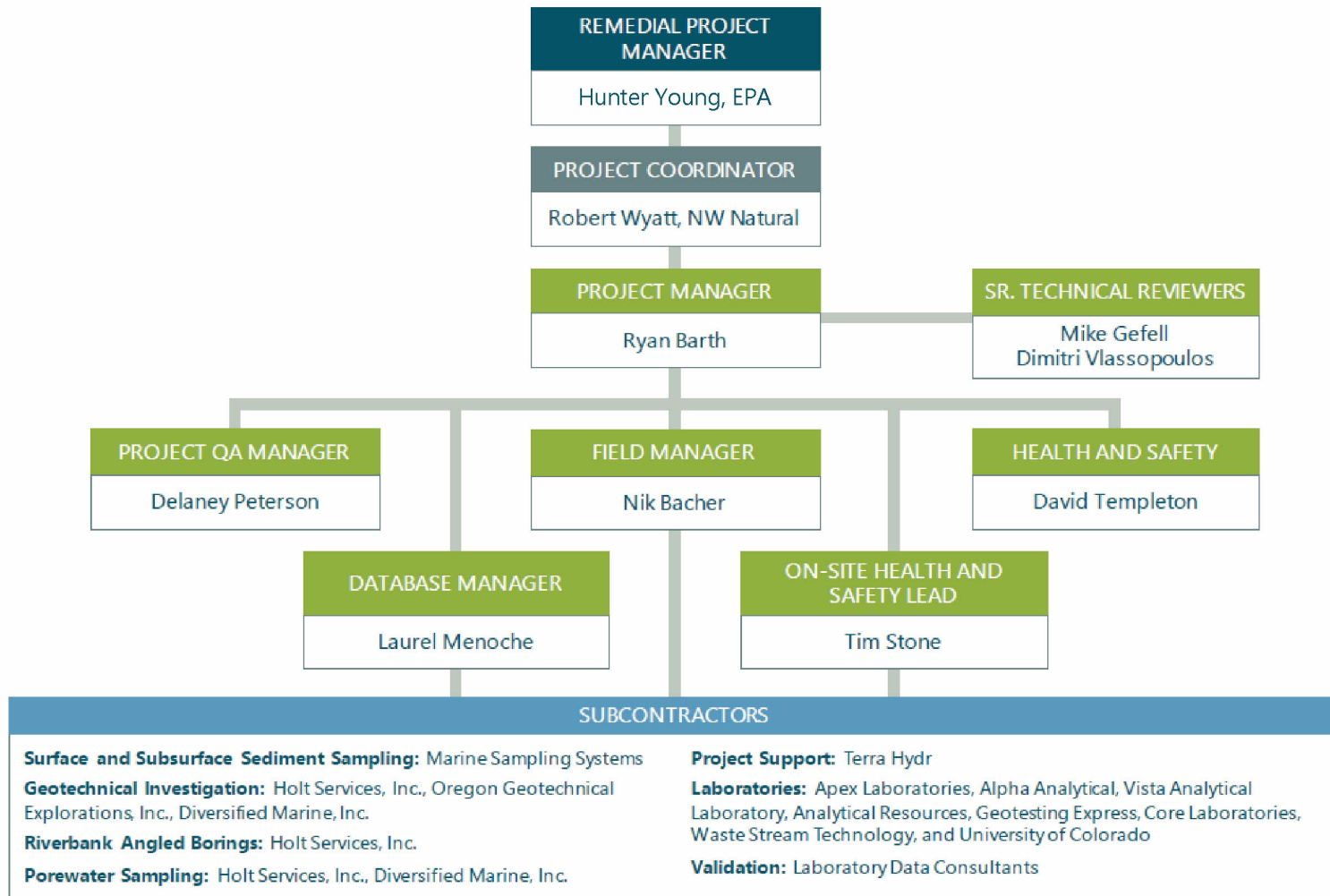
Core 2 – Co-located with Core 1





# Communications

# Lines of Communication



# Daily Reports

- The content of daily reports will be consistent with those developed during the fall 2019
  - Brief Introduction with Daily Activity by Program
  - Personnel On Site
  - Subsurface Sediment Sampling Program – Collection
  - Subsurface Sediment Sampling Program – Processing
  - Health and Safety
  - Samples Shipped
  - Substantive Discussions with EPA Oversight
  - Deviations
- The distribution list for daily reports will be as follows:
  - To: Hunter Young, Lance Peterson, and Dana Bayuk (any others?)
  - Cc: Bob Wyatt, Patty Dost, Ryan Barth, Jen Mott, and Joe Smith

# Proposed Schedule of Activities





# Questions/Discussion

