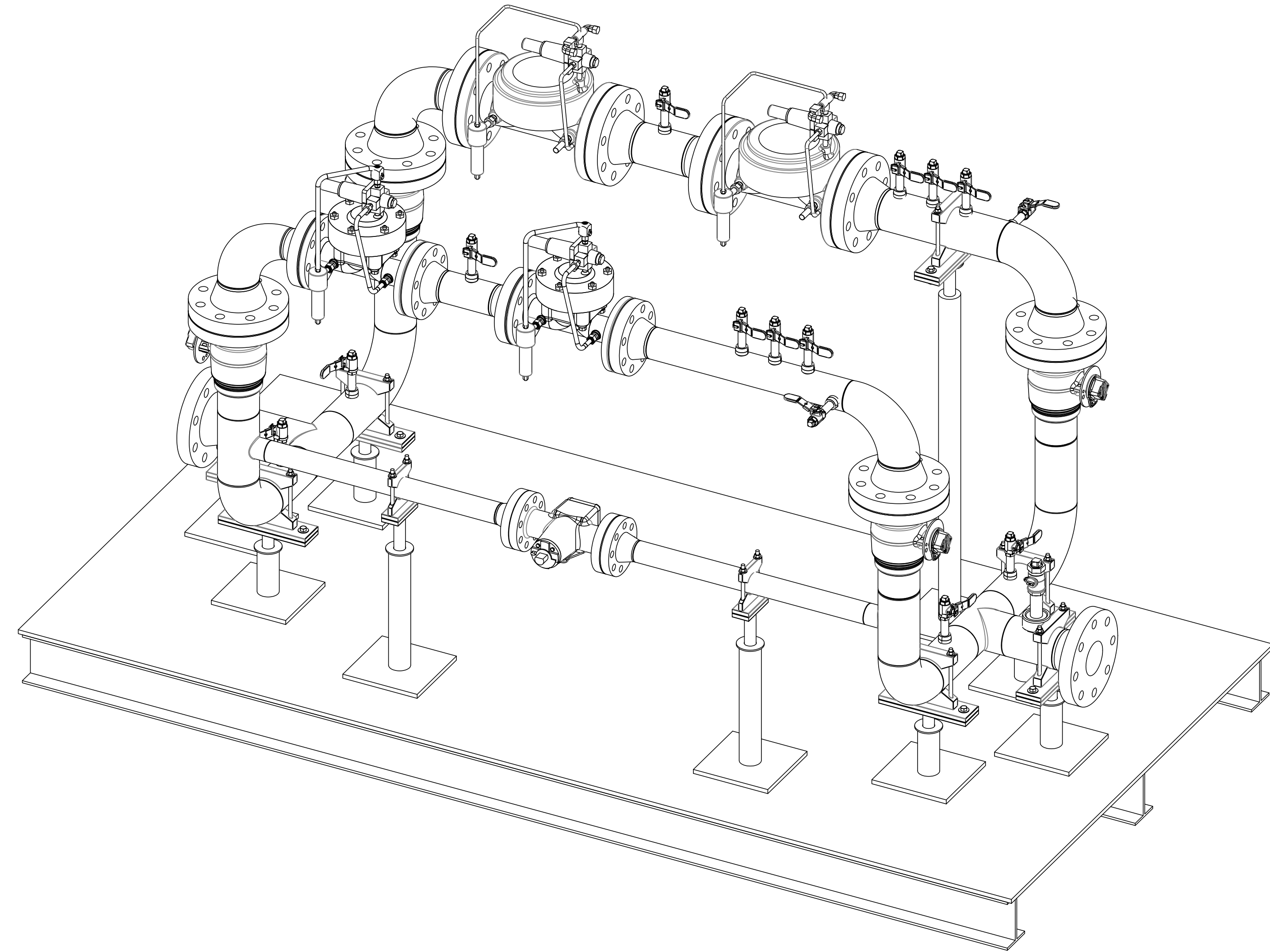


MATERIAL LIST – REG

ITEM	QUANTITY	UNIT	STOCK NO.	DESCRIPTION
1	40	FT	3003800	PIPE, 4IN, X52, 0.237WT, STD, BARE STEEL
2	10	FT	3003858	PIPE, 3IN, X52, 0.216WT, STD, BARE STEEL
3	10	FT	3003829	PIPE, 2IN, X52, 0.154WT, STD, BARE STEEL
4	2	EA	SPECIAL ORDER	4" STD, SINGLE PORT FLANGED – 600 ANSI; FG-41
5				100% ORIFICE, PURPLE SPRING: 60-200 PSIG
6				S20 PILOT W/PURPLE SPRING: 60-200 PSIG
7	2	EA	SPECIAL ORDER	3" STD, SINGLE PORT FLANGED – 600 ANSI; FG-18
8				100% ORIFICE, PURPLE SPRING: 60-200 PSIG
9				S20 PILOT W/PURPLE SPRING: 60-200 PSIG
10	6	EA	3001903	4IN, STD, Y52, LR 90DEG ELB
11	10	EA	SPECIAL ORDER	4IN, STD BORE A105 600 ANSI RFWN FLANGE
12	2	EA	3001941	4IN, STD Y52 STRAIGHT TEE
13	2	EA	3003623	4INX3IN, STD Y52, LR 90DEG, REDUCING ELBOW
14	2	EA	3003399	4IN X 2IN, STD Y52, REDUCING TEE
15	4	EA	SPECIAL ORDER	3IN, STD BORE A105 600 ANSI RFWN FLANGE
16	2	EA	SPECIAL ORDER	2IN, STD BORE A105 600 ANSI RFWN FLANGE
17	4	EA	3002798	4IN 600 ANSI CAMERON BALL VALVE 0.237 FULL PORT
18	1	EA	3002344	2IN ROCKWELL FIG. 2245 DYNAMIC BALANCE PLUG VALVE Fx F
19	1	EA	3000226	2IN LOCKING DEVICE
20	14	EA	3003246	1/2INM X 1/4INF BALL VALVE 1500 PSI
21	1	EA	SPECIAL ORDER	1IN Mx1INF BALL VALVE THREADED SS 1500 PSIG RATED
22	160	EA	3003965	7/BINx5 3/4IN BY LONG STUD W/2 2H NUTS
23	64	EA	3003962	3/4IN x5IN B7 LONG STUD W/2 2H NUTS
24	32	EA	3003961	5/8IN x 4 1/2IN BY LONG STUD W/2 2H NUTS
25	20	EA	SPECIAL ORDER	GASKET, 4" TYPE E, 600#, G-10
26	8	EA	SPECIAL ORDER	GASKET, 3" TYPE E, 600#, G-10
27				
28	2	EA	3002295	INSULATOR, FLG, 4IN, ANSI600, G10, TYPE E, NITRILE SEAL
29	4	EA	3002134	INSULATOR, FLG, 2IN, ANSI600, G10, TYPE E, NITRILE SEAL
30	1	EA	3003389	TOL, 36-2x1/2IN, A105, 3M, FPT, DOM
31	14	EA	3002368	TOL, 8-3x1/2IN, A105, 3M, FPT, DOM
32	1	EA	3003347	PLUG, 1IN, A105, 3M, MPT, SQ HD, SOLID, DOM
33	14	EA	3002406	PLUG, 1/2IN, A105, 3M, MPT, SQ HD, SOLID, DOM
34	32	EA	SPECIAL ORDER	7/8" INSULATOR-WASHER SLEEVE G10 KITS
35	16	EA	SPECIAL ORDER	3/4" INSULATOR-WASHER SLEEVE G10 KITS
36	1	EA	3003643	NIPPLE, 1X4IN, A106B, TBE, XS, BLK, DOM
37	14	EA	3003536	NIPPLE, 1/2X3IN, A106B, TBE, XS, BLK, DOM

Regulator Run 1 Serial Numbers	
Regulator	
Inlet Valve	
Outlet Valve	

Regulator Run 2 Serial Numbers	
Regulator	
Inlet Valve	
Outlet Valve	



NOTES:

1. All flanges and valves shall be 600 ANSI or equivalently rated.
2. All pipe will be Grade X52.
3. Field will install item (5) into item (8), and verify prior to the commissioning of the new station.
4. All points on the fabrication that will be supported on the skid shall be insulated at any metal-metal connections.

"REDLINE"

RETURN THIS PRINT TO DRAFTING SERVICES

CONSTRUCTED BY _____ DATE _____

MEASURED BY _____ DATE _____

CERTIFIED BY _____ (GENERAL MGR, DISTRICT OPERATIONS)

FABRICATION SHOP

TESTED CLEANED INSPECTED PRIMED

TYPE TEST: AIR NITROGEN OTHER _____

TEST PRESSURE (PSIG) _____

COMPLETION DATE _____

BY _____

APPROVED FOR CONSTRUCTION

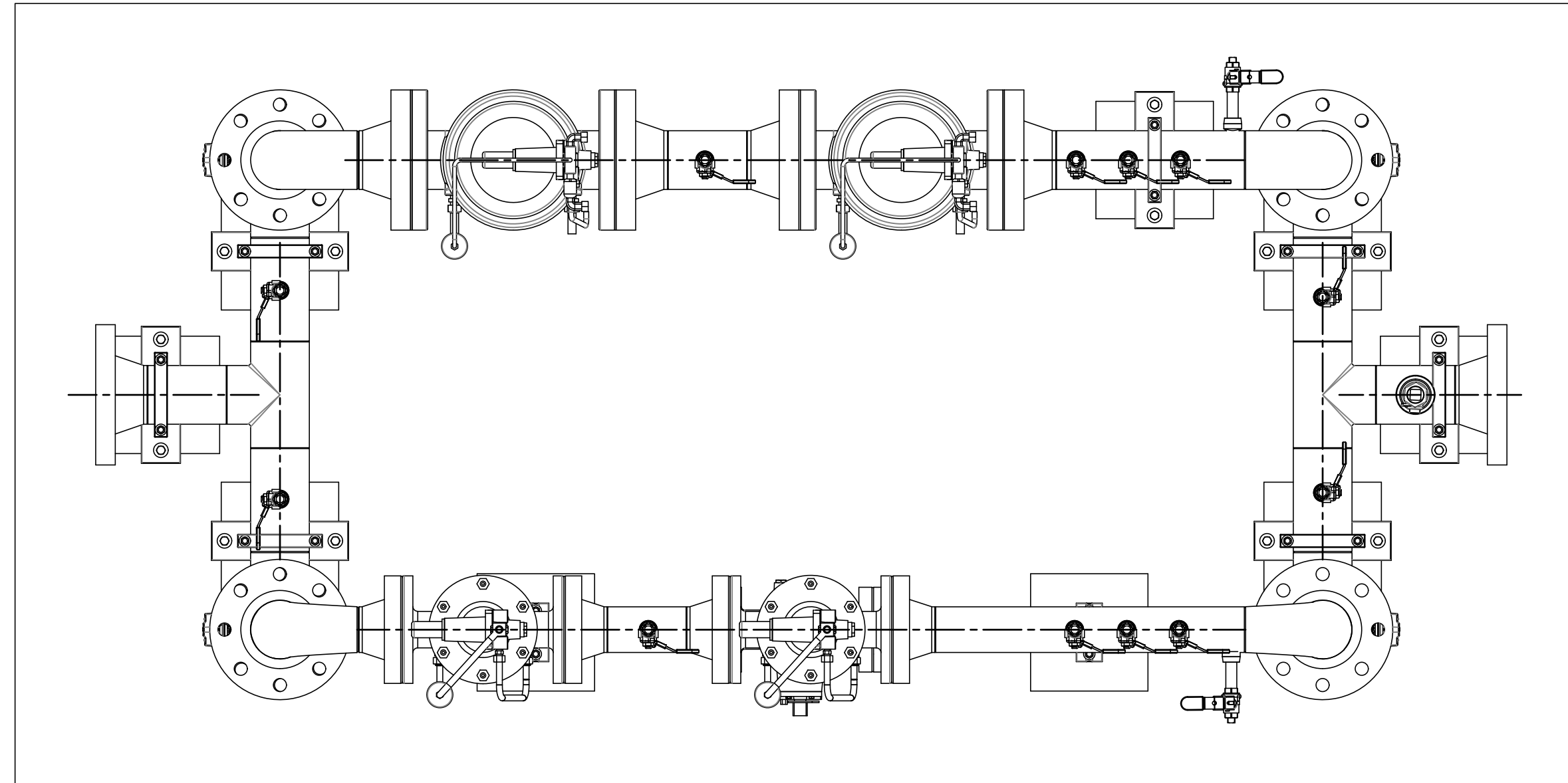
Regulator WO# 298356

Scale	NONE	Drawn	M. GIRARD
Date	7-11-2023	Check	CAD REVIEW
Proj. Eng.	M. HUNT	Grid No.	GRID
Rev. Eng	ENGINEER REV	Meas.	MEASUREMENT



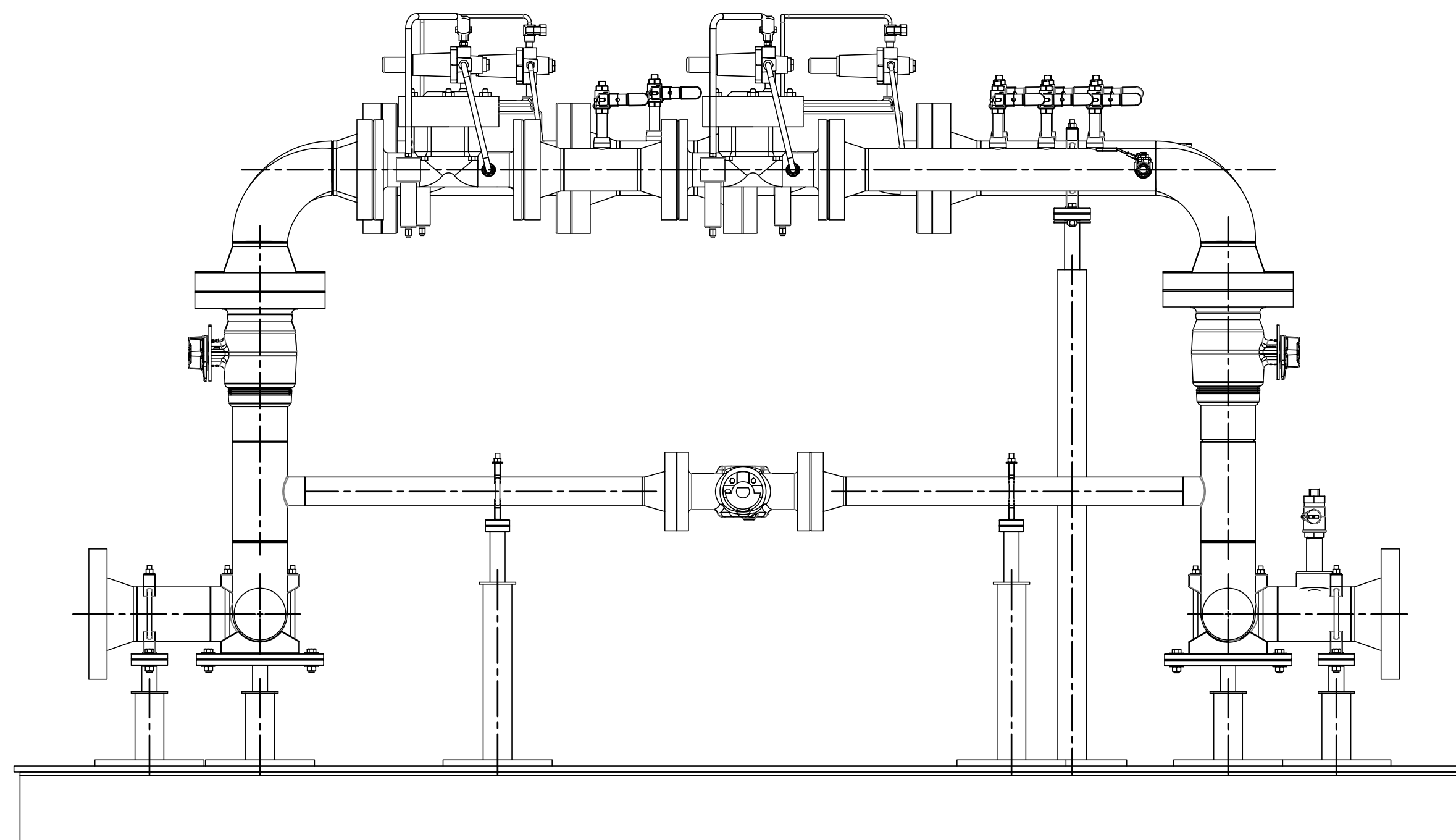
TEMPORARY GATE STATION
Address WALLA WALLA, WA

Dwg No. 298356 TEMP GATE STA WALLA WALLA 2/4



Regulator Run 1 Serial Numbers	
Regulator	
Inlet Valve	
Outlet Valve	

Regulator Run 2 Serial Numbers	
Regulator	
Inlet Valve	
Outlet Valve	



"REDLINE"
RETURN THIS PRINT TO
DRAFTING SERVICES

CONSTRUCTED BY _____ DATE _____

MEASURED BY _____ DATE _____

CERTIFIED BY _____
(GENERAL MGR, DISTRICT OPERATIONS)

FABRICATION SHOP

TESTED CLEANED INSPECTED PRIMED

TYPE TEST: AIR NITROGEN OTHER _____

TEST PRESSURE (PSIG) _____

COMPLETION DATE _____

BY _____

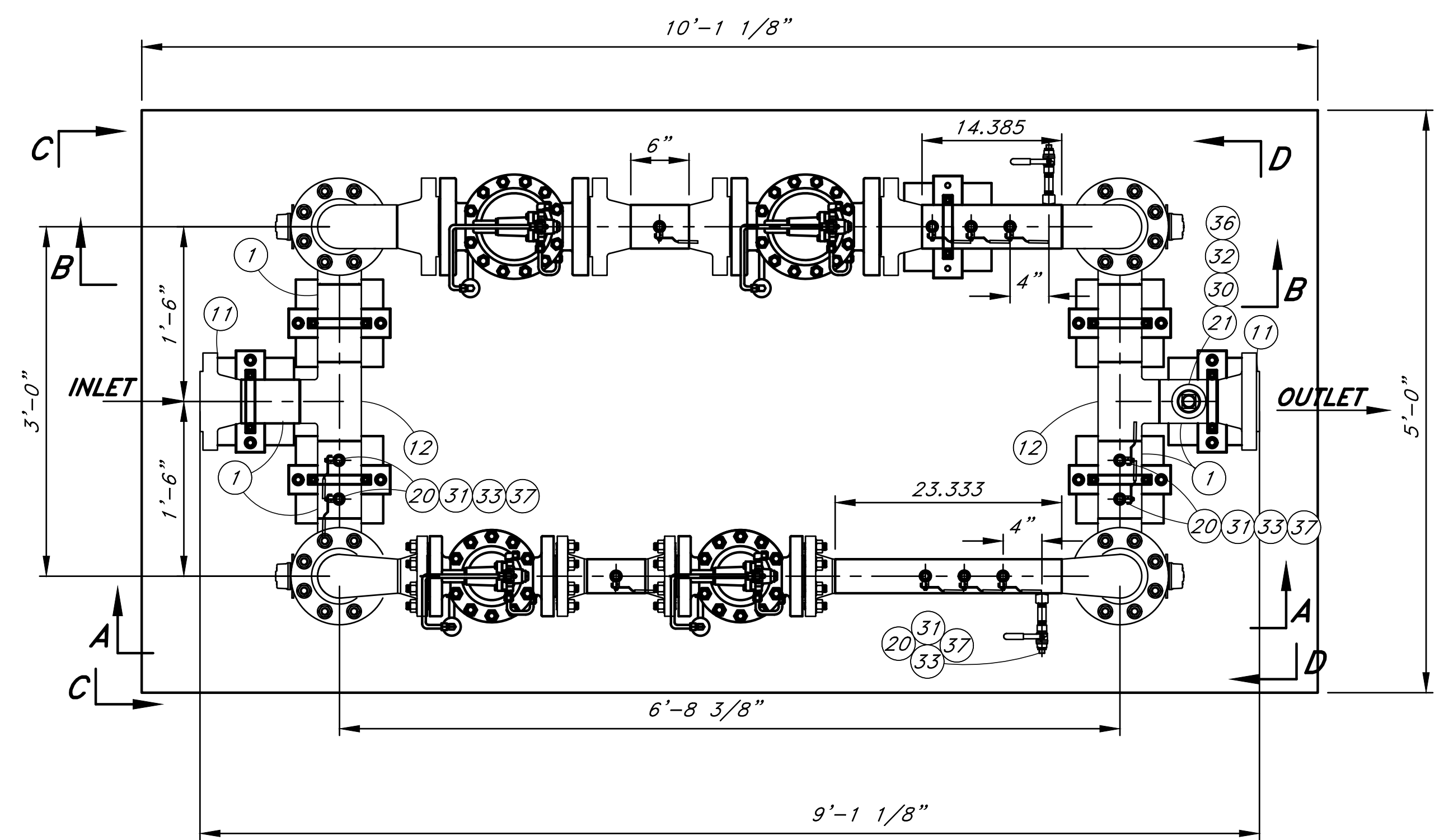
APPROVED FOR CONSTRUCTION

Regulator WO# 298356

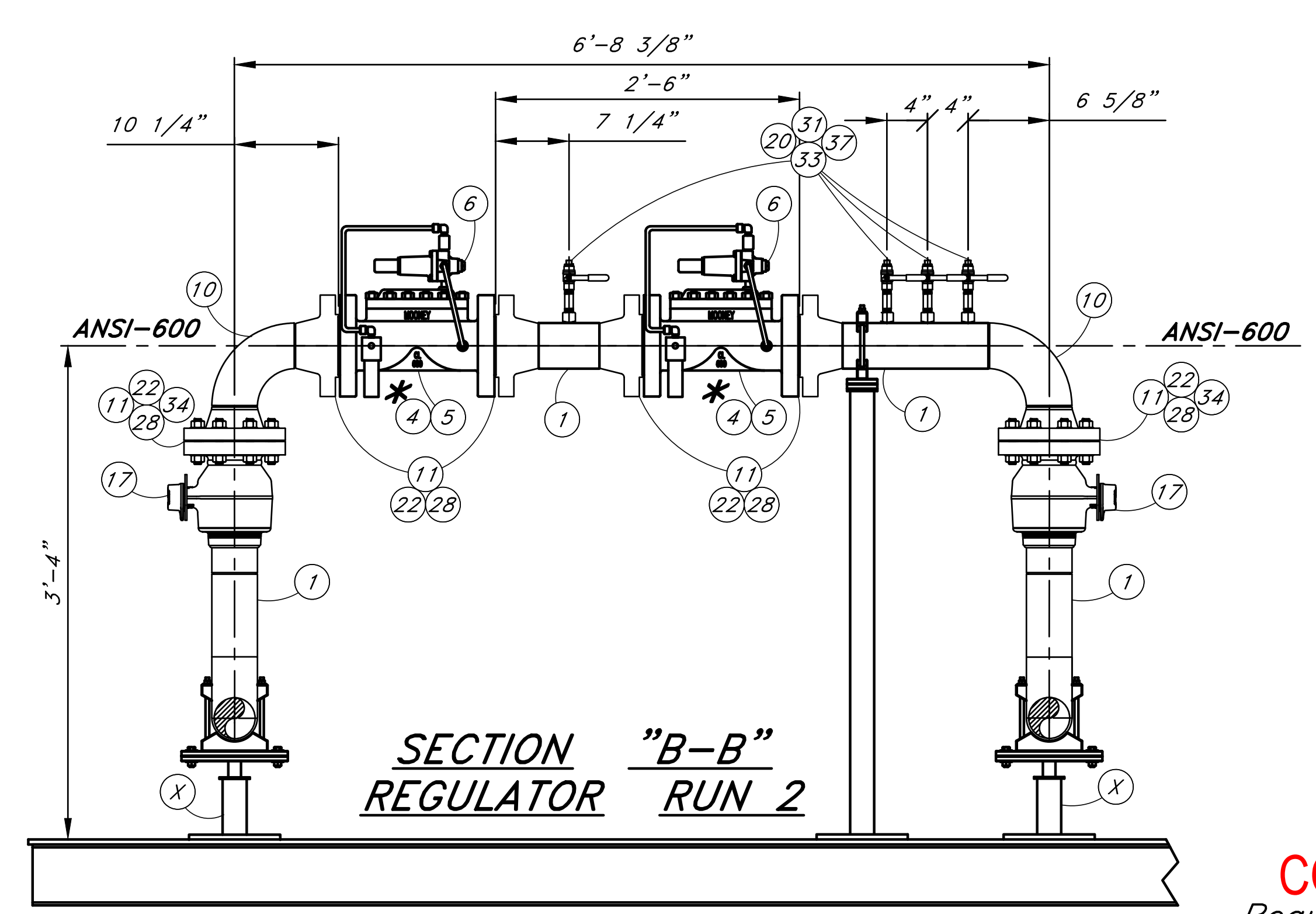
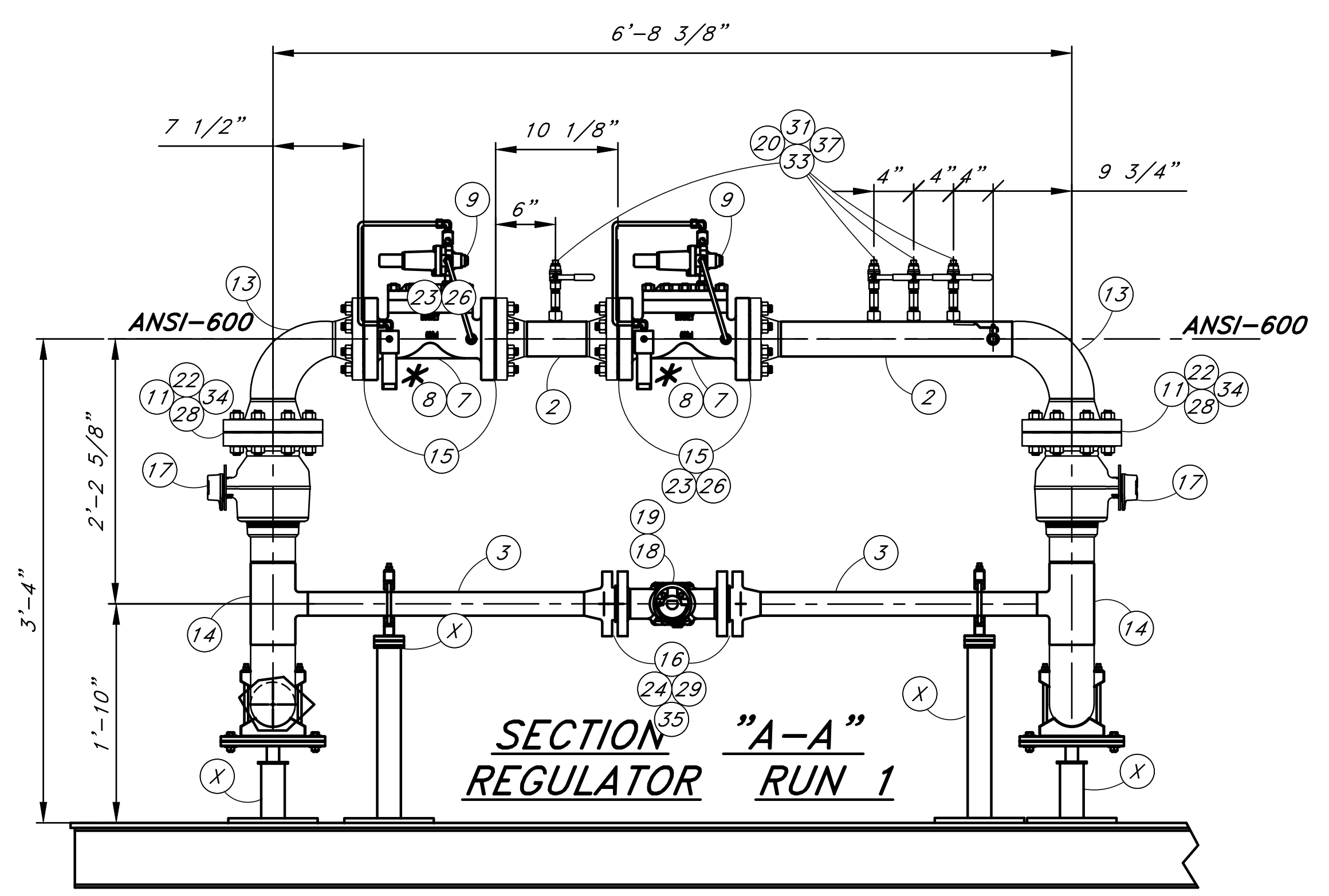
Scale	NONE	Drawn	M. GIRARD
Date	7-11-2023	Check	CAD REVIEW
Proj. Eng.	M. HUNT	Grid No.	GRID
Rev. Eng.	ENGINEER REV	Meas.	MEASUREMENT
Dwg No. 298356 TEMP GATE STA WALLA WALLA 2/4			



TEMPORARY GATE STATION
Address WALLA WALLA, WA



"REDLINE"		FABRICATION SHOP	
RETURN THIS PRINT TO DRAFTING SERVICES			
CONSTRUCTED	BY _____	DATE _____	TESTED <input type="checkbox"/> CLEANED <input type="checkbox"/> INSPECTED <input type="checkbox"/> PRIMED <input type="checkbox"/>
MEASURED	BY _____	DATE _____	TYPE TEST: AIR <input type="checkbox"/> NITROGEN <input type="checkbox"/> OTHER <input type="checkbox"/> _____
CERTIFIED BY _____	(GENERAL MGR, DISTRICT OPERATIONS)		TEST PRESSURE (PSIG) _____
			COMPLETION DATE _____
			BY _____

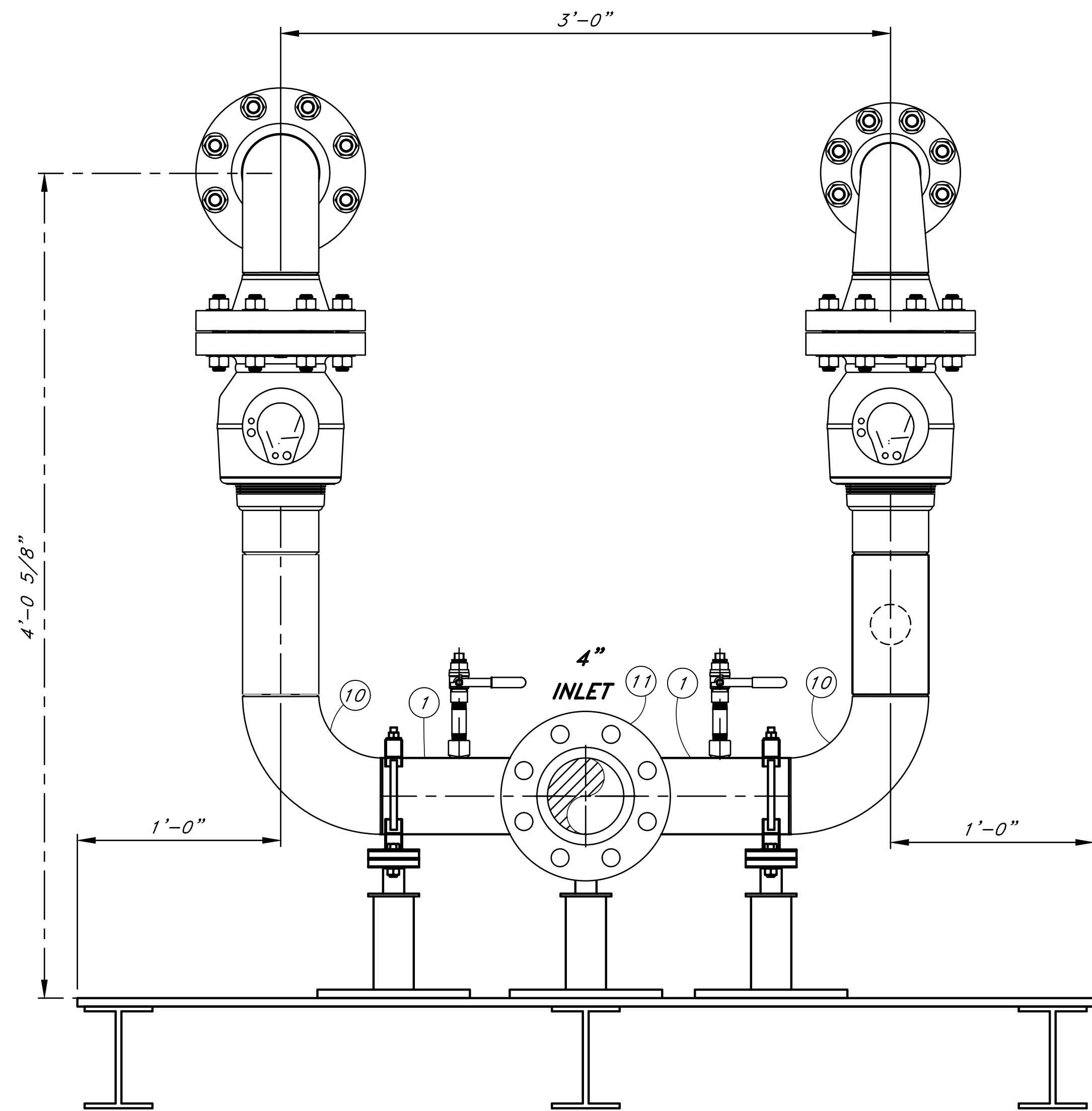


APPROVED FOR CONSTRUCTION
Regulator WO# 298356

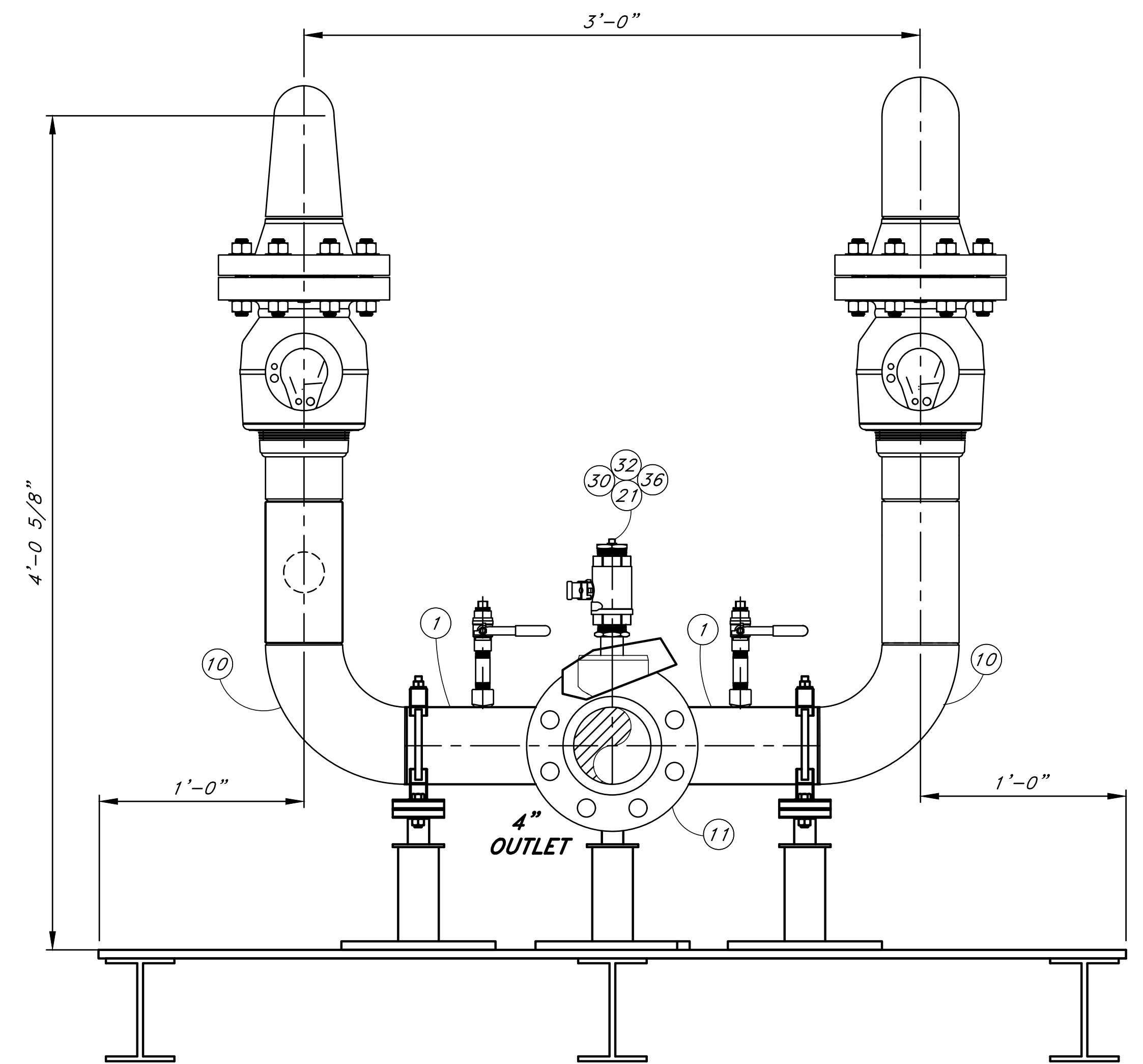
*Field to install throttle plate item ⑤
Field to route control lines as required

Scale	NONE	Drawn	M. GIRARD
Date	7-11-2023	Check	CAD REVIEW
Proj. Eng.	M. HUNT	Grid No.	GRID
Rev. Eng	ENGINEER REV	Meas.	MEASUREMENT
Dwg No. 298356 TEMP GATE STA WALLA WALLA 3/4			

CASCADE NATURAL GAS CORPORATION
A Subsidiary of MDU Resources Group, Inc.
TEMPORARY GATE STATION
Address WALLA WALLA, WA



SECTION "C-C"
INLET HEADER



SECTION "D-D"
OUTLET HEADER

"REDLINE"
RETURN THIS PRINT TO
DRAFTING SERVICES

CONSTRUCTED BY _____ DATE _____

MEASURED BY _____ DATE _____

CERTIFIED BY _____
(GENERAL MGR, DISTRICT OPERATIONS)

FABRICATION SHOP

TESTED CLEANED INSPECTED PRIMED

TYPE TEST: AIR NITROGEN OTHER _____

TEST PRESSURE (PSIG) _____

COMPLETION DATE _____

BY _____

**APPROVED
FOR
CONSTRUCTION**
Regulator WO# 298356

Scale	NONE	Drawn	M. GIRARD
Date	7-11-2023	Check	CAD REVIEW
Proj. Eng.	M. HUNT	Grid No.	GRID
Rev. En	ENGINEER REV	Meas.	MEASUREMENT
Dwg No. 298356 TEMP GATE STA WALLA WALLA 4/4			



TEMPORARY GATE STATION
Address WALLA WALLA, WA