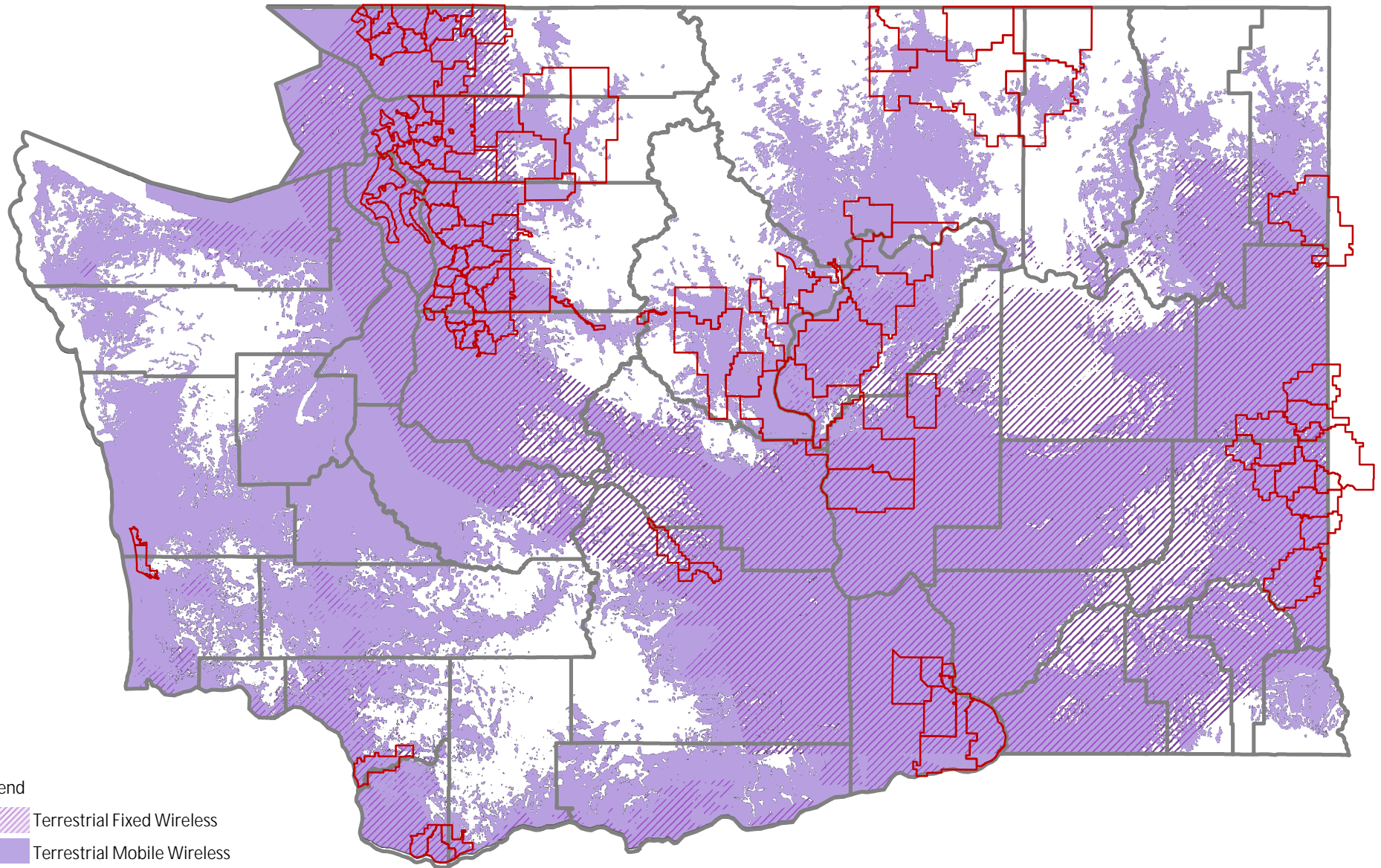


DOCKET No. UT-_____



Frontier Communications Petition for Competitive Classification

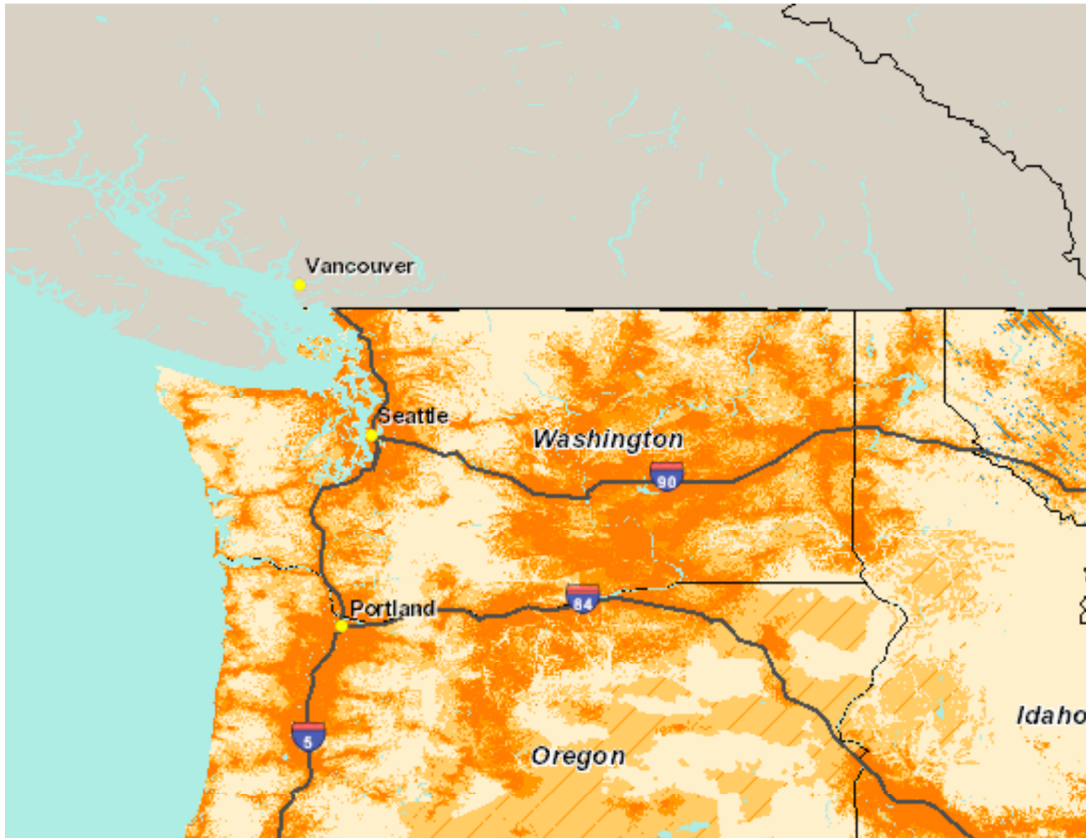
Exhibit 9

Washington Wireless Availability and Major Wireless Provider Coverage Maps








Legend

-  Terrestrial Mobile Wireless
-  Terrestrial Fixed Wireless



Voice Coverage Legend

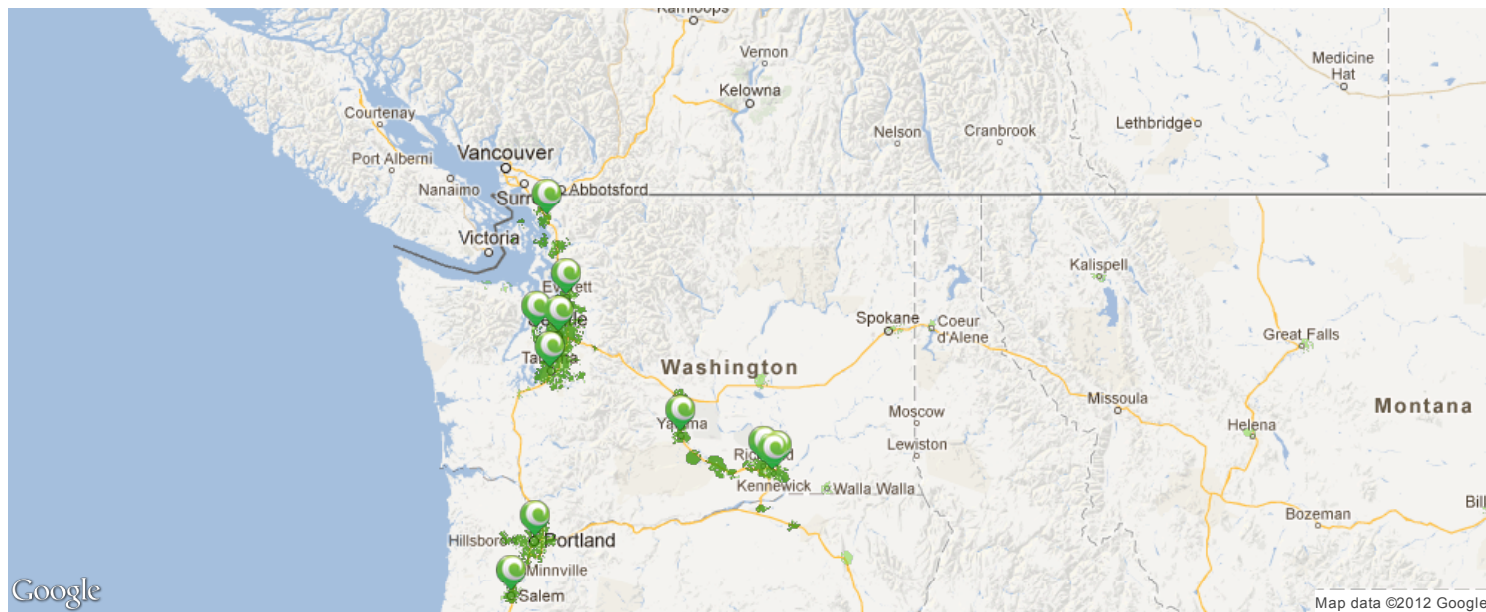
-  Best
-  Good
-  Moderate
-  Partner
-  No Service Available

3G Voice and Mobile Broadband Coverage

 Show 3G Voice and Mobile Broadband Coverage

Important Information About the Coverage Map

Map may include areas served by unaffiliated carriers, and may depict their licensed area rather than an approximation of the coverage there. Actual coverage area may differ substantially from map graphics, and coverage may be affected by such things as terrain, weather, foliage, buildings and other construction, signal strength, customer equipment and other factors. AT&T does not guarantee coverage. Charges will be based on the location of the site receiving and transmitting the call, not the location of the subscriber.



Coverage Check

Enter an address [en español](#)

Street, city, state and/or ZIP or an intersection Map it!

Voice coverage experience [en español](#)

- Sprint coverage
- Sprint coverage - signal strength varies
- Off-network roaming
- No coverage

Coverage updated on: 11/29/12

This tool provides high-level estimates of our wireless coverage. Coverage is not available everywhere and varies based on a number of factors. [>> Learn more](#)

Our coverage maps provide high-level estimates of our coverage areas when using your device outdoors under optimal conditions. Coverage isn't available everywhere. Estimating wireless coverage and signal strength is not an exact science.

There are gaps in coverage within our estimated coverage areas that, along with other factors both within and beyond our control (network problems, software, signal strength, your wireless device, structures, buildings, weather, geography, topography, etc.), will result in dropped and blocked connections, slower data speeds, or otherwise impact the quality of services.

Services that rely on location information, such as E911 and GPS navigation, depend on your device's ability to acquire satellite signals (typically not available indoors) and network coverage. E911 services also depend on local emergency service provider systems/support. Estimated future coverage subject to change.

THE ONLY NETWORK WITH TRULY UNLIMITED DATASM

Sprint is the only national carrier with no throttling, no metering and no overages, all while on the Sprint network.

SHOP UNLIMITED PLANS



We've got you covered where you live, work, and play.

Street: City: State: Zip:

[Prepaid and FlexPay coverage map](#)

[Learn more about T-Mobile's expanded coverage](#)

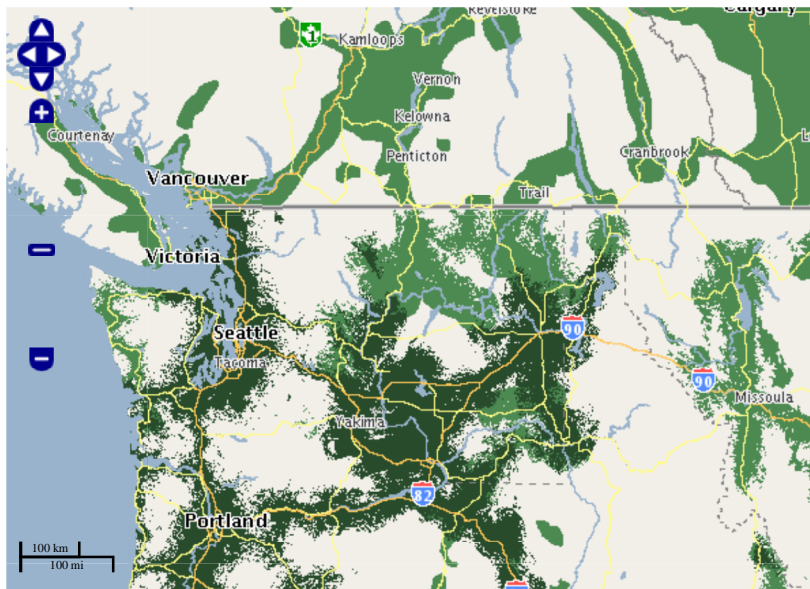
3G/4G smartphone

2G/voice

3G/4G smartphone signal strength* ?

See your smartphone coverage on T-Mobile's network.

Coverage Service partner No Coverage



Address location New cell site T-Mobile HotSpot Find a T-Mobile HotSpot

*The definitions and user experience may differ for dedicated Mobile Internet devices such as Mobile HotSpots, Tablets, and Laptop Sticks. For more details, see a Retail Associate at the nearest T-Mobile Retail Store.

MAP INFORMATION: Capable device required for network connection and 3G and 4G speeds. Roaming and on-network data allotments may differ. Maps approximate anticipated coverage outdoors, based on a variety of factors, and do not guarantee service availability. [Learn more](#)

