



June 5, 2012

Via Electronic Filing

Mr. David W. Danner, Executive Director and Secretary
Washington Utilities and Transportation Commission
P.O. Box 47250
1300 S. Evergreen Park Drive SW
Olympia, WA 98504-7250

RE: Advice No. WA CT 12-04 for CenturyTel of Washington, Inc. d/b/a CenturyLink

Dear Mr. Danner:

Enclosed for filing please find revisions to the CenturyTel of Washington, Inc. d/b/a CenturyLink WN U-2. This filing is submitted with a proposed effective date of June 15, 2012. Tariffs are available on CenturyLink's website at www.centurylink.com/tariffs. The tariff sheets enclosed for review and approval are as follows:

Preface	Second Revised Sheet No. 2
Schedule 3	Second Revised Sheet No. 3
Rate center Maps-Index	Third Revised Sheet No. M1
	Second Revised Sheet No. M2
Rate center Maps	Second Revised Sheet No. M6
	Second Revised Sheet No. M10
	Second Revised Sheet No. M20
	Second Revised Sheet No. M29
	Second Revised Sheet No. M30

This filing incorporates the necessary changes to CenturyLink's WN-U2 to complete documentation of the consolidation of:

- the Chewelah and Hunters rate centers (surviving rate center of Chewelah).
- the Eltopia and Mathews Corner rate centers (surviving rate center of Mathews Corner).
- the Twisp and Winthrop rate centers (surviving rate center of Twisp).
- the Basin City, Connell, Kahlotus and Mesa rate centers (surviving rate center of Connell).

All activities associated with these rate center consolidations have been completed and this filing updates the Company's tariff to reflect the previously completed rate center consolidations. This filing is being made in compliance with Condition 28(c) of the Settlement Agreement between CenturyLink, the Commission Staff and Public Counsel in the CenturyLink/Qwest merger case, Docket UT-100820.

I, Debra Levy, in compliance with WAC 480-80-103, certify that I have authority to issue tariff revisions on behalf of CenturyTel of Washington, Inc. d/b/a CenturyLink.



Page 2
Mr. David W. Danner
June 5, 2012

Commission consideration and timely approval of these pages are respectfully requested. Please feel free to contact me if you have any questions regarding this filing.

Sincerely,

A handwritten signature in cursive script that reads "Debra Levy".

Debra Levy

Enclosures

pc: Lisa Anderl
Mark Reynolds
John Felz

WA CT 12-04

Debra Levy
Tariff Analyst
Debra.Levy@CenturyLink.com
5454 West 110th Street
Overland Park, KS 66211
Tel: 913-345-7571
Fax: 913-345-6756
www.centurylink.com/tariffs

PRELIMINARY STATEMENT (Continued)

III. EXCHANGES

Telephone service is provided in the following exchanges as authorized by the Washington Utilities and Transportation Commission:

Arletta	Fall City	McCleary	Reardan	(C)
Ames Lake	Fox Island	Medical Lake	San Juan [5]	(T)
Carnation	Forks [6]	Mineral	Snoqualmie Pass	(T)
Cheney	Gig Harbor	Montesano	South Prairie	
Chewelah [1]	Glenoma	Morton	Spangle	(T)
Clearwater	Kettle Falls	North Bend	Twisp [2]	(T)
Connell [4]	Kingston [7]	Orting	Vashon	(T)
Creston	Lakebay	Packwood	Washtucna	
Davenport	Long Beach [8]	Puget Island [9]		(T)
Elma	Mathews Corner [3]	Randle		(T) (C)

- [1] **Chewelah** designation includes the geographical area formerly served by the Hunters exchange. (N)
- [2] **Twisp** designation includes the geographical area formerly served by the Winthrop exchange. (N)
- [3] **Mathews Corner** designation includes the geographical area formerly served by the Eltopia exchange. (N)
- [4] **Connell** designation includes the geographical areas formerly served by the Basin City, Kahlotus and Mesa exchanges. (N)
- [5] San Juan **designation** includes the geographical areas formerly served by the Friday Harbor, Lopez, East Sound and Blakely exchanges. (T)
- [6] **Forks** includes the geographical areas formerly served by the Beaver, Clallam Bay and Neah Bay exchanges. (N)
- [7] **Kingston** includes the geographical areas formerly served by the Hansville exchange. (N)
- [8] **Long Beach** includes the geographical areas formerly served by the Ocean Park and Chinook exchanges. (N)
- [9] **Puget Island** includes the geographical area formerly served by the Cathlamet exchange (N)

BASIC EXCHANGE SERVICE

Classification of Exchanges in Accordance with Total Central Office
Exchange Access Lines and Equivalents in the Local Service Calling Area

Group I
(1 to 5,000 Access Lines)

Connell		Puget Island (Cathlamet)	(D)
Creston		Randle	(D)
Davenport	Mineral	Twisp	
Glenoma	Morton	Washtucna	(D)
	Packwood		

Group II
(5,001 to 20,000 Access Lines)

Chewelah	Forks	Mathews Corner	
Clearwater		McCleary	(D)
Elma	Kettle Falls	San Juan	
	Long Beach		(D)

Group III
(20,001-100,000 Access Lines)

Kingston
Montesano

Group IV
(100,001 to Unlimited Access Lines)

Ames Lake	Gig Harbor	Snoqualmie Pass
Arletta	Lakebay	South Prairie
Carnation	Medical Lake	Spangle
Cheney	North Bend	Vashon
Fall City	Orting	
Fox Island	Reardan	

EXCHANGE MAPS - INDEX

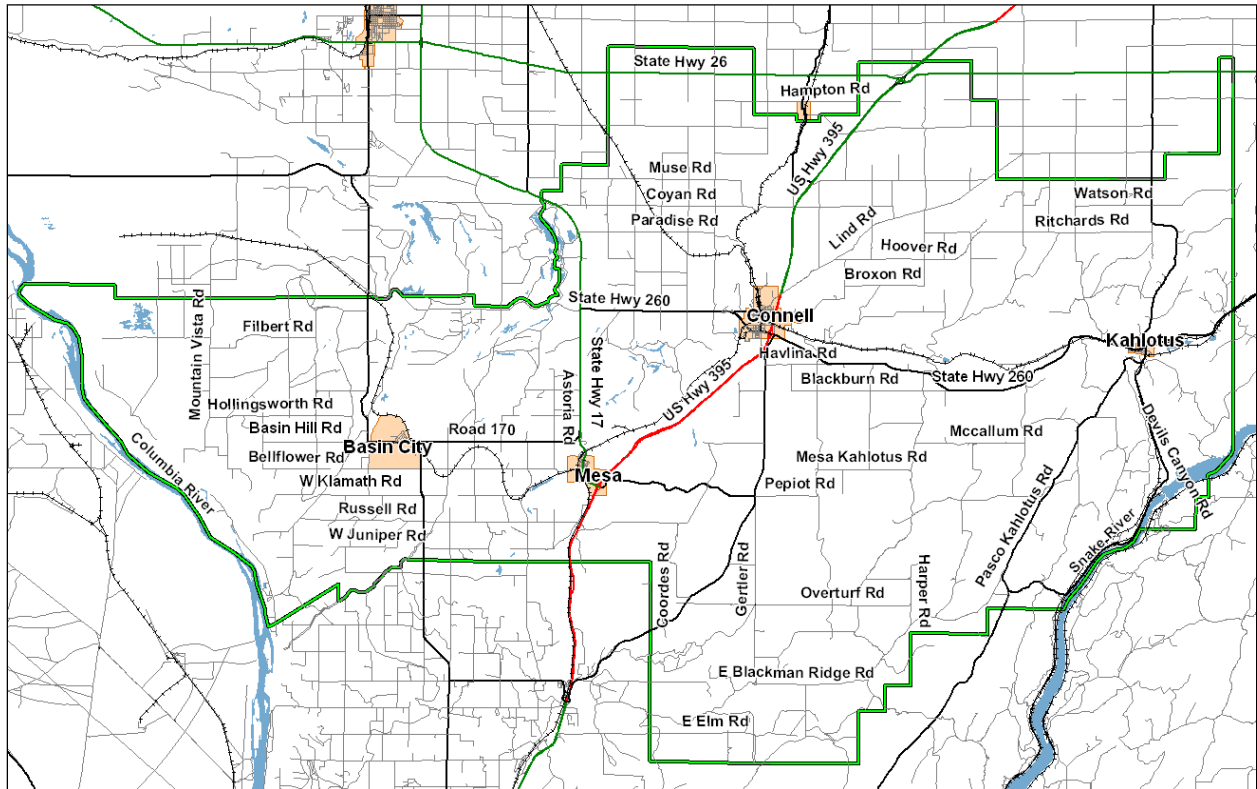
All references herein to "Telephone Utilities of Washington"; "Pacific Telecom Inc. and subsidiaries"; "Telephone Utilities of WA PTI Communications"; and "PTI Communications", hereby refer to and are replaced by "CenturyTel of Washington, Inc."

<u>Exchange</u>	<u>Map Number</u>	
Arletta	M 3	
Ames Lake	M33	(D)
Reserved for Future Use	M34	
Carnation	M32	
Cheney	M23	
Chewelah (includes former Hunters exchange)	M30	(C)
Reserved For Future Use	M35	
Clearwater	M36	
Connell (includes former Basin City, Mesa and Kahlotus exchanges)	M 6	(C)
Creston	M28	
Davenport	M27	
Elma	M17	(D)
Fall City	M32	
Forks	M37	
Fox Island	M 3	
Glenoma	M 4	
Gig Harbor	M 3	
Reserved for Future Use	M29	(C)
		(D)
Kettle Falls	M31	
Kingston	M19	
Lakebay	M15	
Long Beach	M 2	
Mathews Corner (includes former Eltopia exchange)	M10	(C)
McCleary	M16	
Medical Lake	M26	(D)
Mineral	M 4	
Montesano	M18	
Morton	M4	
Reserved For Future Use	M38	
North Bend	M32	
Orting	M 5	
Packwood	M 4	
Puget Island (Cathlamet)	M14	

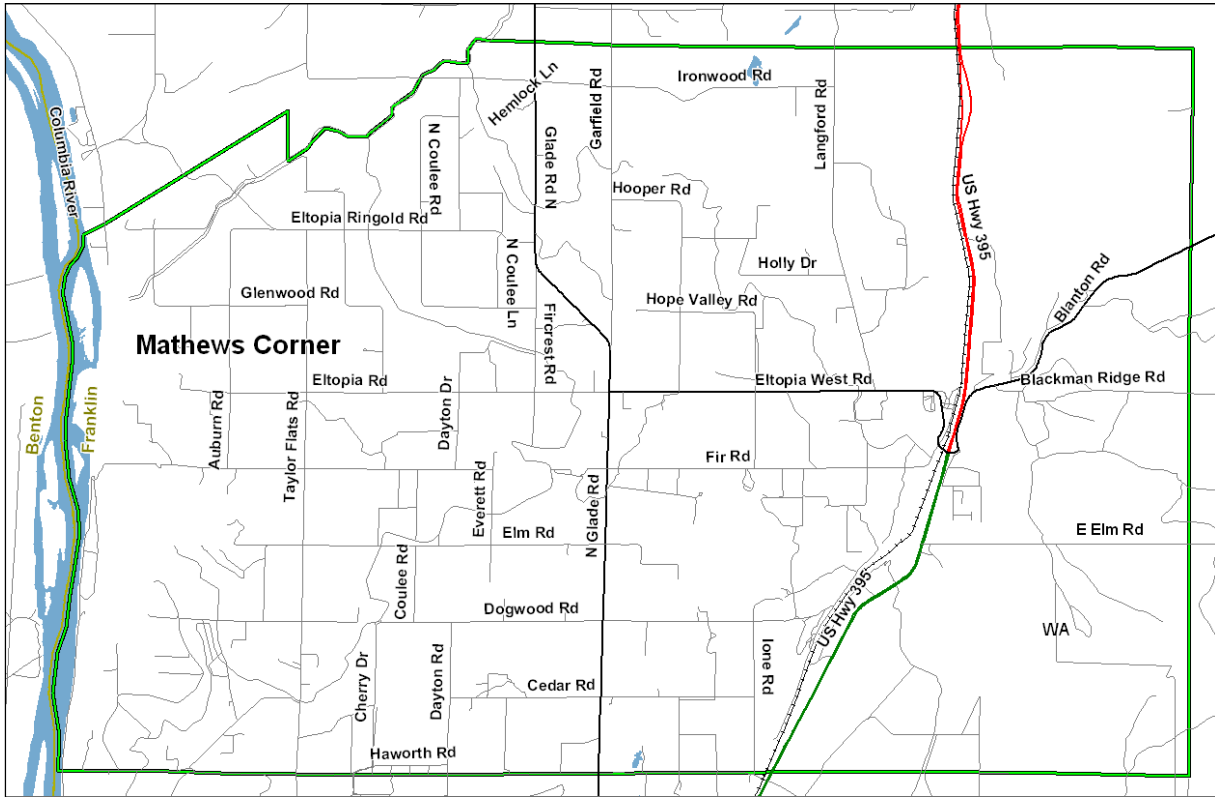
EXCHANGE MAPS - INDEX

<u>Exchange</u>	<u>Map Number</u>	
Randle	M 4	
Reardan	M25	
San Juan (formerly Blakely, East Sound, Friday Harbor, Lopez)	M38.1	
Snoqualmie Pass	M32	
South Prairie	M 5	
Spangle	M24	
Twisp (includes former Winthrop exchange)	M20	(C)
Vashon	M22	
Washtucna	M12	(D)
Reserved for Future Use	M39	
Reserved for Future Use	M40	
Reserved for Future Use	M41	
Reserved for Future Use	M42	

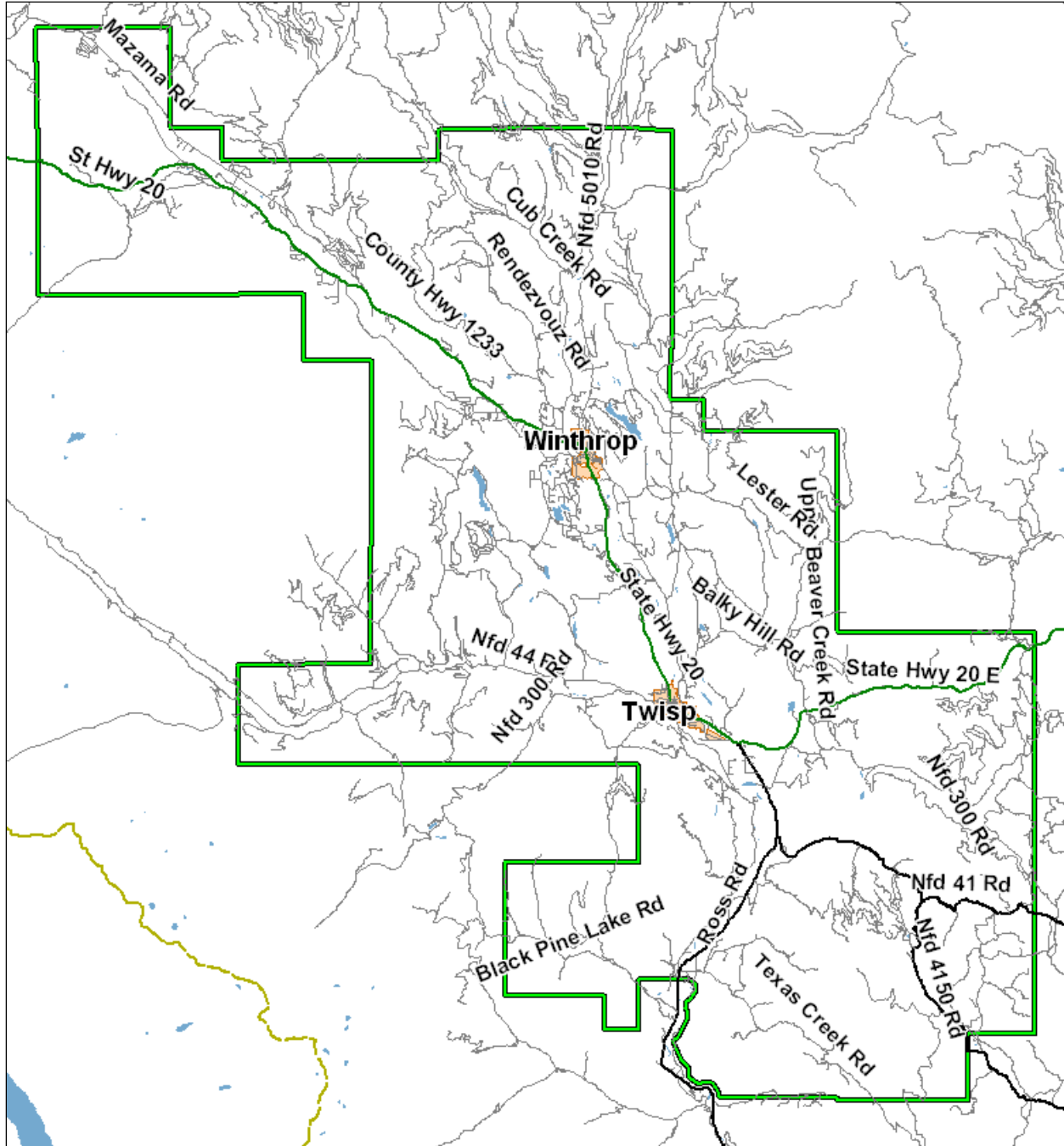
EXCHANGE MAPS
Connell



EXCHANGE MAPS
Mathews Corner



EXCHANGE MAPS
Twisp



EXCHANGE MAPS
Reserved For Future Use

(C)
(D)

(D)

EXCHANGE MAPS
Chewelah

