

ONITA R. KING
Rates & Regulatory Affairs
Tel: 503.721.2452
Fax: 503.721.2516
email: ork@nwnatural.com



September 11, 2015

NWN Advice No. WUTC 15-09 / UG _____

VIA ELECTRONIC FILING

Steven V. King, Executive Director and Secretary
WASHINGTON UTILITIES &
TRANSPORTATION COMMISSION
1300 S Evergreen Park Drive, SW
Post Office Box 47250
Olympia, Washington 98504-7250

Re: Combined Effects: November 1, 2015 Adjustments to Rates
NW Natural WUTC Advice Nos. 15-06 through 15-08.

Northwest Natural Gas Company, dba NW Natural (NWN or the "Company") files revisions to its Tariff WN U-6, as listed in the attached Table of Tariff Sheet Revisions. The proposed tariff sheets are stated to become effective with service on and after November 1, 2015.

The purpose of this filing is to revise the tariff sheets listed in the attached Table of Tariff Sheet Revisions to reflect: (1) the removal of temporary adjustments that were placed into rates effective November 1, 2014 and the application of the proposed temporary adjustments identified in the Company's filings NWN WUTC Advice No. 15-6, 15-7, and 15-8, respectively, and (2) the application of the proposed Annual WACOG and demand charges identified in NWN WUTC Advice No. 15-8, to customer rates proposed to be effective November 1, 2014.

The Company revises rates for these purposes annually; the last such filing was effective on November 1, 2013.

The combined effect of the rate changes proposed to become effective November 1, 2015 is a decrease to the average monthly bills in the primary rate schedules as follows: Residential bills will decrease by 14.4% and commercial bills will decrease 15.2%. If the effects of the temporary rate adjustments were permanent, the combined result of all components of the rate changes would be a decrease in the Company's revenues from its Washington operations of \$11,906,405.

In addition to the supporting materials submitted as part of this filing, the Company will separately submit work papers in electronic format, all of which are incorporated herein by reference.

In accordance with WAC 480-90-198, the Company declares that because the proposed changes are coincident with the Company's annual purchased gas cost filing, notice to customers is made in accordance with WAC 480-90-194(5). A copy of this notice is included with the Company's annual PGA filing, NWN WUTC Advice No. 15-8.

Included with this filing is a copy of the Company's customer newsletter that includes a discussion of the rate changes proposed with this 2015-2016 annual purchased gas cost adjustment cycle, and a copy of the Company's press release which will be issued coincident with the submission of this advice filing.

This rate change affects all of NW Natural's Washington customers. NW Natural currently serves approximately 69,413 residential customers and 6,279 business and industrial customers in the Company's Washington service territory.

The Company respectfully requests that the tariff sheets filed herewith be approved to become effective with service on and after November 1, 2015.

As required by WAC 480-80-103(4)(a), I certify that I have authority to issue tariff revisions on behalf of NW Natural.

Copies of this letter and the attached filing are available in the Company's main office in Portland, Oregon, and on its website at www.nwnatural.com.

Please address correspondence on this matter to me at ork@nwnatural.com, with copies to the following:

eFiling
Rates & Regulatory Affairs
NW Natural
220 NW Second Avenue
Portland, Oregon 97209
Telecopier: (503) 721-2516
Telephone: (503) 226-4211, ext. 3589
eFiling@nwnatural.com

Sincerely,

NW NATURAL

/s/ Onita R. King

Onita R. King
Rates & Regulatory Affairs

Attachments: Supporting Materials

TABLE OF TARIFF SHEET REVISIONS
 PROPOSTED TO BECOME EFFECTIVE NOVEMBER 1, 2015

PROPOSED REVISION	CANCELS REVISION	SCHEDULE TITLE
Effective November 1, 2015	Effective November 1, 2014	Summary of Monthly Sales Service Billing Rates
Effective November 1, 2015	Effective November 1, 2014	Summary of Monthly Transportation Service Billing Rates
Twenty-Fourth Revision of Sheet 101.1	Twenty-Third Revision of Sheet 101.1	Schedule 1 "General Sales Service"
Twenty-Fourth Revision of Sheet 102.1	Twenty-Third Revision of Sheet 102.1	Schedule 2 "Residential Sales Service"
Twelfth Revision of Sheet 103.3	Eleventh Revision of Sheet 103.3	Schedule 3 "Basic Firm Sales Service – Non-Residential (continued)"
Twenty-Fourth Revision of Sheet 127.1	Twenty-Third Revision of Sheet 127.1	Schedule 27 "Residential Heating Dry-Out Service"
Tenth Revision of Sheet 141.9	Ninth Revision of Sheet 141.9	Schedule 41 "Non-Residential Sales and Transportation Service (continued)"
Fifth Revision of Sheet 141.10	Fourth Revision of Sheet 141.10	Schedule 41 "Non-Residential Sales and Transportation Service (continued)"
Eleventh Revision of Sheet 142.10	Tenth Revision of Sheet 142.10	Schedule 42 "Large Volume Non-Residential Sales and Transportation Service (continued)"
Sixth Revision of Sheet 142.10.1	Fifth Revision of Sheet 142.10.1	Schedule 42 "Large Volume Non-Residential Sales and Transportation Service (continued)"
Eleventh Revision of Sheet 142.11	Tenth Revision of Sheet 142.11	Schedule 42 "Large Volume Non-Residential Sales and Transportation Service (continued)"
Tenth Revision of Sheet 143.6	Ninth Revision of Sheet 143.6	Schedule 43 "High-Volume Non-Residential Firm and Interruptible Transportation Service (continued)"
Twenty-First Revision of Sheet 201.1	Twentieth Revision of Sheet 201.1	Schedule 201 "Temporary (Technical) Adjustments to Rates"
Twelfth Revision of Sheet 201.2	Eleventh Revision of Sheet 201.2	Schedule 201 "Temporary (Technical) Adjustments to Rates (continued)"
Twenty-Third Revision of Sheet 203.1	Twenty-Second Revision of Sheet 203.1	Schedule 203 "Purchased Gas Cost Adjustments to Rates"

WASHINGTON

SUMMARY OF MONTHLY SALES SERVICE BILLING RATES

**EFFECTIVE:
November 1, 2015**

SCHEDULE 1 GENERAL SALES SERVICE	SCHEDULE 2 RESIDENTIAL SALES SERVICE	SCHEDULE 3 BASIC FIRM SALES SERVICE	SCHEDULE 10 SPECIAL METERING EQUIPMENT
<p>Usage Charges: Customer Charge \$3.47 Res'l Usage Charge (per therm): \$1.13448 Com'l Usage Charge (per therm): \$1.12725 Minimum Monthly Bill \$3.47</p>	<p>Usage Charges: Customer Charge \$7.00 All therms \$0.84733 Minimum Monthly Bill \$7.00</p>	<p>Usage Charges: Customer Charge \$15.00 Commercial All therms \$0.84836 Industrial All therms \$0.82839 Minimum Monthly Bill \$15.00</p>	<p>Meter Size: First 150 CF/hr./mo. Capacity \$0.40628 Next 800 CF/hr./mo. Capacity \$0.00165 All add'l CF/hr./mo. Capacity \$0.00241 Minimum Monthly Rental \$0.40628 Charge for Meter Reading \$0.36</p>
<p>SCHEDULE 27 RESIDENTIAL HEATING DRY-OUT SERVICE</p> <p>Usage Charge: Customer Charge \$6.00 Per therm, all therms \$0.67818 Minimum Monthly Bill: \$6.00</p>	<p>SCHEDULE 41 NON-RESIDENTIAL SALES SERVICE</p> <p>Customer Charge: \$250.00 Volumetric Charges: Commercial Firm Service: 1st 2,000 therms: \$0.60450 All additional therms: \$0.56630 Industrial Firm Service: 1st 2,000 therms: \$0.58997 All additional therms: \$0.55347 Plus Pipeline Capacity Charges*: Firm (MDDV): \$1.81 Firm (per therm): \$0.12112 Commercial Interruptible Service: 1st 2,000 therms: \$0.60380 All additional therms: \$0.56568 Industrial Interruptible Service: 1st 2,000 therms: \$0.58964 All additional therms: \$0.55320 Plus Pipeline Capacity Charge (per therm): \$0.04231</p>	<p>SCHEDULE 42 LARGE VOLUME NON-RESIDENTIAL FIRM SALES SERVICE</p> <p>Customer Charge: \$1,300.00 Commercial Volumetric Charges: 1st 10,000 therms: \$0.41525 Next 20,000 therms: \$0.40140 Next 20,000 therms: \$0.37379 Next 100,000 therms: \$0.35563 Next 600,000 therms: \$0.33142 All additional therms: \$0.30115 Industrial Volumetric Charges: 1st 10,000 therms: \$0.40472 Next 20,000 therms: \$0.39195 Next 20,000 therms: \$0.36656 Next 100,000 therms: \$0.34985 Next 600,000 therms: \$0.32757 All additional therms: \$0.29970 Plus Storage Charge (per MDDV): \$0.20415 Distribution Capacity Chg. (MDDV): \$0.15748 Firm Pipeline Capacity Charges*: Per MDDV: \$1.81 Per therm: \$0.12112</p>	<p>SCHEDULE 42 LARGE VOLUME NON-RESIDENTIAL INTERRUPTIBLE SALES SERVICE</p> <p>Customer Charge: \$1,300.00 Volumetric Charges: Industrial 1st 10,000 therms: \$0.40619 Next 20,000 therms: \$0.39329 Next 20,000 therms: \$0.36764 Next 100,000 therms: \$0.35076 Next 600,000 therms: \$0.32826 All additional therms: \$0.30014 Volumetric Charges: Commercial 1st 10,000 therms: \$0.41022 Next 20,000 therms: \$0.39690 Next 20,000 therms: \$0.37040 Next 100,000 therms: \$0.35297 Next 600,000 therms: \$0.32974 All additional therms: \$0.30069 Plus Pipeline Capacity Chg. per therm: \$0.04231 Plus Storage Charge per MDDV: \$0.10208 Minimum Monthly Bill: Customer Charge, plus Volumetric Charges, plus Pipeline Capacity Charge, plus Storage Charge.</p>
	<p>SCHEDULE 42 LARGE VOLUME NON-RESIDENTIAL FIRM SALES SERVICE</p> <p>Customer Charge, plus Volumetric Charges, plus applicable Pipeline Capacity Charge, plus the Storage and Distribution Charges.</p>	<p>Minimum Monthly Bill: Customer Charge, plus Volumetric Charges, plus applicable Pipeline Capacity Charge, plus the Storage and Distribution Charges.</p>	<p>OTHER CHARGES: Telemetry Charge (per month) \$127.00 Standard Unauthorized Use: \$ 2.00/wh Unauthorized Use - Violation of Curtailment Order \$10.00/wh</p>

RATE SUMMARY

**SUMMARY OF MONTHLY TRANSPORTATION SERVICE
BILLING RATES**

WASHINGTON

**EFFECTIVE:
November 1, 2015**

<p align="center">SCHEDULE 41 NON-RESIDENTIAL TRANSPORTATION SERVICE</p>	<p align="center">SCHEDULE 42 LARGE VOLUME NON-RESIDENTIAL FIRM TRANSPORTATION SERVICE</p>	<p align="center">SCHEDULE 43 HIGH-VOLUME NON-RESIDENTIAL TRANSPORTATION SERVICE</p>	<p align="center">OTHER CHARGES:</p>
<p>Customer Charge: \$250.00 Transportation Charge: \$250.00</p> <p>Volumetric Charges: 1st 2,000 therms: \$0.30077 All additional therms: \$0.26500</p> <p>Minimum Monthly Bill: \$500.00</p>	<p>Customer Charge: \$1,300.00 Transportation Charge: \$250.00</p> <p>Volumetric Charges: 1st 10,000 therms: \$0.11818 Next 20,000 therms: \$0.10579 Next 20,000 therms: \$0.08112 Next 100,000 therms: \$0.06490 Next 600,000 therms: \$0.04327 All additional therms: \$0.01622</p> <p>Firm Distribution Capacity Chg. (MDDV) \$0.15748</p> <p>Minimum Monthly Bill: \$1,550.00 Plus for Firm Service: Distribution Capacity Charge</p>	<p>Customer Charge: \$38,000.00 Transportation Charge: \$250.00</p> <p>Volumetric Charges: All therms: \$0.00499</p> <p>If Firm Service, ADD: Distribution Capacity Chg. (MDDV) \$0.15748</p> <p>Minimum Monthly Bill: \$38,250.00 Plus for Firm Service: Distribution Capacity Charge</p>	<p>Monthly Telemetry Charge: \$127.00 Standard Unauthorized Use: \$2.00/th Unauthorized Use - Violation of Curtailment Order: \$10.00/th</p> <p>Annual Sales WACOG: \$0.32160 Winter Sales WACOG: \$0.33253</p>
<p align="center">SCHEDULE 42 LARGE VOLUME NON-RESIDENTIAL INTERRUPTIBLE TRANSPORTATION SERVICE</p> <p>Customer Charge: \$1,300.00 Transportation Charge: \$250.00</p> <p>Volumetric Charges: 1st 10,000 therms: \$0.11818 Next 20,000 therms: \$0.10579 Next 20,000 therms: \$0.08112 Next 100,000 therms: \$0.06490 Next 600,000 therms: \$0.04327 All additional therms: \$0.01622</p> <p>Minimum Monthly Bill: \$1,550.00</p>	<p align="center">SCHEDULE 42 LARGE VOLUME NON-RESIDENTIAL INTERRUPTIBLE TRANSPORTATION SERVICE</p> <p>Customer Charge: \$1,300.00 Transportation Charge: \$250.00</p> <p>Volumetric Charges: 1st 10,000 therms: \$0.11818 Next 20,000 therms: \$0.10579 Next 20,000 therms: \$0.08112 Next 100,000 therms: \$0.06490 Next 600,000 therms: \$0.04327 All additional therms: \$0.01622</p> <p>Minimum Monthly Bill: \$1,550.00</p>	<p align="center">PENALTY CHARGES:</p> <p>Balancing Charge (excess over 5%) \$1.00/therm Entitlement Overrun Charges: Excess < threshold + 2% \$0.50/therm Excess > threshold + 2% \$1.00/therm Entitlement Underrun Charges: 5% to 10% Over 10% \$0.50/therm Underrun not cleared \$1.00/therm</p>	

Effective with service on
and after November 1, 2015

Issued September 11, 2015
NWN WUTC Advice No. 15-09

NORTHWEST NATURAL GAS COMPANY

WN U-6

Twenty-Fourth Revision of Sheet 101.1

Cancels Twenty-Third Revision of Sheet 101.1

RATE SCHEDULE 1 GENERAL SALES SERVICE

AVAILABLE:

To all Residential and Commercial Customer classes in all territory served by the Company under the Tariff of which this Rate Schedule is a part, except that service under this Rate Schedule is not available for Standby Service to Commercial Customers. Seasonal or temporary Discontinuance of Service is allowed subject to Special Provision 1 of this Rate Schedule. The installation of Distribution Facilities, when required before service can be provided to equipment served under this Rate Schedule, is subject to the provisions of **SCHEDULE E**.

SERVICE DESCRIPTION:

Service under this Rate Schedule is Firm Sales Service to gas-fired equipment, including but not limited to one or any multiple or combination of the following:

- (a) Non-ducted space heating equipment that does not qualify as primary heating systems under Rate Schedule 2, including but not limited to fireplace inserts, free standing gas stoves, and room heaters;
- (b) Supplemental or Standby space heating equipment including but not limited to natural gas back-up to electric heat pumps, used in residential applications;
- (c) Water heating equipment used to serve single-family residential swimming pools, spas, and hot tubs;
- (d) Other equipment including, but not limited to, log lighter, gas log, gas barbecue, tiki torch, Bunsen burner, Domestic cooking equipment, hobby kilns, refrigeration or Domestic clothes drying;
- (e) Equipment installed for use in detached garages, shops, or outbuildings.

MONTHLY RATE: Effective: November 1, 2015

(T)

The rates shown in this Rate Schedule may not always reflect actual billing rates. See **SCHEDULE 200** for a list of applicable adjustments. Rates are subject to charges for purchased gas costs and technical rate adjustments.

	Base Rate	Pipeline Capacity Rate	Commodity Rate	Temporary Adjustment	Billing Rate
Customer Charge	\$3.47	----	----	----	\$3.47
Volumetric Charge (per therm)					
Residential	\$0.68448	\$0.12112	\$0.32160	\$0.00728	\$1.13448
Commercial	\$0.68407	\$0.12112	\$0.32160	\$0.00046	\$1.12725

(R)

(R)

Minimum Monthly Bill: Customer Charge, plus charges under **SCHEDULE C** and **SCHEDULE 10** (if applicable)

(continue to Sheet 101.2)

Issued September 11, 2015
NWN WUTC Advice No. 15-09

Effective with service on
and after November 1, 2015

Issued by: **NORTHWEST NATURAL GAS COMPANY**
d.b.a. NW Natural
220 N.W. Second Avenue
Portland, Oregon 97209-3991

NORTHWEST NATURAL GAS COMPANY

WN U-6

Twenty-Fourth Revision of Sheet 102.1

Cancels Twenty-Third Revision of Sheet 102.1

RATE SCHEDULE 2 RESIDENTIAL SALES SERVICE

AVAILABLE:

To Residential Customers, in all territory served by the Company under the Tariff of which this Rate Schedule is a part. Seasonal or temporary Discontinuance of Service is allowed subject to Special Provision 1 of this Rate Schedule. The installation of Distribution Facilities, when required before service can be provided to equipment served under this Rate Schedule, are subject to the provisions of **SCHEDULE E**.

SERVICE DESCRIPTION:

Service under this Rate Schedule is Firm Sales Service to gas-fired equipment used in Residential dwellings that provide complete family living facilities in which the occupant normally cooks, eats, sleeps, and carries on the household operations incident to Domestic life, for at least one of the following purposes:

- (a) Operation of ducted forced air Natural Gas space heating equipment that is the primary source for space heating requirements;
- (b) Operation of a gas-fired hearth product or wall heater as the primary source for space heating requirements where the hearth or wall heater has a verified nameplate rating of 20,000 BTUs or greater, and is installed in a primary residence defined as a dwelling that is occupied year-round, and where that dwelling is 1,500 square feet or less; and, or
- (c) Operation of fully automatic water heating equipment for primary water heating requirements.

Service under this Rate Schedule includes the use of gas for equipment installed in addition to (a) and (b).

MONTHLY RATE: Effective: November 1, 2015

(T)

The rates shown in this Rate Schedule may not always reflect actual billing rates. See **SCHEDULE 200** for a list of applicable adjustments. Rates are subject to changes for purchased gas costs and technical rate adjustments.

	Base Rate	Pipeline Capacity Rate	Commodity Rate	Temporary Adjustment	Billing Rate
Customer Charge:	\$7.00	---	---	---	\$7.00
Volumetric Charge (per therm)	\$0.41454	\$0.12112	\$0.32160	(\$0.00993)	\$0.84733

(R)

Minimum Monthly Bill: Customer Charge, plus charges under **SCHEDULE C** and **SCHEDULE 10** (if applicable)

(continue to Sheet 102.2)

Issued September 11, 2015
NWN WUTC Advice No. 15-09

Effective with service on
and after November 1, 2015

NORTHWEST NATURAL GAS COMPANY

WN U-6

Twelfth Revision of Sheet 103.3

Cancels Eleventh Revision of Sheet 103.3

RATE SCHEDULE 3 BASIC FIRM SALES SERVICE - NON-RESIDENTIAL (continued)

MONTHLY RATE: Effective: November 1, 2015

(T)

The rates shown in this Rate Schedule may not always reflect actual billing rates. See **SCHEDULE 200** for a list of applicable adjustments. Rates are subject to changes for purchased gas costs and technical rate adjustments.

FIRM SALES SERVICE CHARGES (03 SF):					Billing Rates
					[1]
Customer Charge (per month):					\$15.00
	Base Rate	Pipeline Capacity	Commodity Component [2]	Temporary Adjustment	
Volumetric Charges (per therm):					
Commercial	\$0.41858	\$0.12112	\$0.32160	(\$0.01294)	\$0.84836
Industrial	\$0.41845	\$0.12112	\$0.32160	(\$0.03278)	\$0.82839
Standby Charge (per therm of MHDV) [3]:					\$5.00

(R)

(R)

[1] **SCHEDULE C** and **SCHEDULE 10** Charges shall apply, if applicable.

[2] The Commodity Component will be either Annual Sales WACOG or Monthly Incremental Cost of Gas.

[3] Applies to Standby Sales Service only.

Minimum Monthly Bill. The Minimum Monthly Bill shall be any **SCHEDULE C** and **SCHEDULE 10** Charges, plus:

- (a) **Firm Sales Service.** Customer Charge
- (b) **Firm Sales Standby Service.** Customer Charge, plus Standby Service Charge

Issued September 11, 2015
NWN WUTC Advice No. 15-09

Effective with service on
and after November 1, 2015

NORTHWEST NATURAL GAS COMPANY

WN U-6

Twenty-Fourth Revision of Sheet 127.1

Cancels Twenty-Third Revision of Sheet 127.1

RATE SCHEDULE 27 RESIDENTIAL HEATING DRY-OUT SERVICE

AVAILABLE:

To Residential home builders, developers, and contractors during the period that a Residential dwelling is under construction, in all territory served by the Company under the Tariff of which this schedule is a part.

SERVICE DESCRIPTION:

Service under this Rate Schedule is restricted to the use of gas in approved permanently-installed gas heating equipment in place during the period the dwelling is under construction. Upon occupancy of the dwelling, service under this Rate Schedule shall terminate automatically. In no event will service under this Rate Schedule continue for more a period of time greater than twelve (12) months from the date the gas meter is set at the dwelling. Upon termination of service under this Rate Schedule, gas service shall transfer to **SCHEDULE 1** or **SCHEDULE 2**, whichever is applicable.

MONTHLY RATE: Effective: November 1, 2015

(T)

The rates shown in this Rate Schedule may not always reflect actual billing rates. See **SCHEDULE 200** for a list of applicable adjustments. Rates are subject to charges for purchased gas costs and technical rate adjustments.

	Base Rate	Pipeline Capacity Rate	Commodity Rate	Temporary Adjustment	Billing Rate
Customer Charge:	\$6.00	---	---	---	\$6.00
Volumetric Charge (per therm)					
All therms	\$0.25420	\$0.12112	\$0.32160	(\$0.01874)	\$0.67818

(R)

Minimum Monthly Bill: Customer Charge, plus charges under **SCHEDULE C** and **SCHEDULE 10** (if applicable)

GENERAL TERMS:

Service under this Rate Schedule is governed by the terms of this Rate Schedule, the General Rules and Regulations contained in this Tariff and by all rules and regulations prescribed by regulatory authorities, as amended from time to time.

Issued September 11, 2015
NWN WUTC Advice No. 15-09

Effective with service on
and after November 1, 2015

NORTHWEST NATURAL GAS COMPANY

WN U-6

Fifth Revision of Sheet 141.10

Cancels Fourth Revision of Sheet 141.10

RATE SCHEDULE 41 NON-RESIDENTIAL SALES AND TRANSPORTATION SERVICE (continued)

MONTHLY RATES FOR INDUSTRIAL CUSTOMER CLASS:

Effective: November 1, 2015

(T)

The rates shown in this Rate Schedule may not always reflect actual billing rates. **SEE SCHEDULE 200** for a list of applicable adjustments. Rates are subject to changes for purchased gas costs and technical rate adjustments.

FIRM SALES SERVICE CHARGES (I41SF) [1]:					Billing Rates
Customer Charge (per month):					\$250.00
Volumetric Charges (per therm)	Base Rate		Commodity Component [2]	Total Temporary Adjustments [3]	
Block 1: 1st 2,000 therms	\$0.30168		\$0.32160	(\$0.03331)	\$0.58997 (R)
Block 2: All additional therms	\$0.26582		\$0.32160	(\$0.03395)	\$0.55347 (R)
Pipeline Capacity Charge Options (select one):					
Firm Pipeline Capacity Charge - Volumetric option (per therm):					\$0.12112 (R)
Firm Pipeline Capacity Charge - Peak Demand option (per therm of MDDV):					\$1.81 (R)
INTERRUPTIBLE SALES SERVICE CHARGES (I41SI) [1]:					
Customer Charge (per month):					\$250.00
Volumetric Charges (per therm)	Base Rate		Commodity Component: [2]	Total Temporary Adjustments [3]	
Block 1: 1st 2,000 therms	\$0.30141		\$0.32160	(\$0.03337)	\$0.58964 (R)
Block 2: All additional therms	\$0.26556		\$0.32160	(\$0.03396)	\$0.55320 (R)
Plus: Interruptible Pipeline Capacity Charge - Volumetric (per therm):					\$0.04231 (R)
FIRM TRANSPORTATION SERVICE CHARGES (I41TF):					
Customer Charge (per month):					\$250.00
Transportation Charge (per month):					\$250.00
Volumetric Charges (per therm)	Base Rate			Total Temporary Adjustments [4]	
Block 1: 1st 2,000 therms	\$0.30077			\$0.00000	\$0.30077
Block 2: All additional therms	\$0.26500			\$0.00000	\$0.26500

[1] The Monthly Bill shall equal the sum of the Customer Charge, plus the Volumetric Charges, plus the Pipeline Capacity Charge selected by the Customer, plus any other charges that may apply from Schedule C and Schedule 10.

[2] The stated rate is the Company's Annual Sales WACOG. However, the Commodity Component to be billed will be dependent on Customer's Service Type Selection and may instead be Winter Sales WACOG, or Monthly Incremental Cost of Gas.

[3] Where applicable, as set forth in this rate schedule, the Account 191 portion of the Temporary Adjustments as set forth in Schedule 201 may not apply.

[4] Where applicable, as set forth in this rate schedule, the Account 191 portion of the Sales Service Temporary Adjustments as set forth in Schedule 201 may also apply.

Issued September 11, 2015
NWN WUTC Advice No. 15-09

Effective with service on
and after November 1, 2015

NORTHWEST NATURAL GAS COMPANY

WN U-6

Tenth Revision of Sheet 141.9

Cancels Ninth Revision of Sheet 141.9

RATE SCHEDULE 41 NON-RESIDENTIAL SALES AND TRANSPORTATION SERVICE (continued)

MONTHLY RATES FOR COMMERCIAL CUSTOMER CLASS:

Effective: November 1, 2015

(T)

The rates shown in this Rate Schedule may not always reflect actual billing rates. **SEE SCHEDULE 200** for a list of applicable adjustments. Rates are subject to changes for purchased gas costs and technical rate adjustments.

FIRM SALES SERVICE CHARGES (C41SF) [1]:					Billing Rates
Customer Charge (per month):					\$250.00
Volumetric Charges (per therm)	Base Rate		Commodity Component [2]	Total Temporary Adjustments [3]	
Block 1: 1st 2,000 therms	\$0.30164		\$0.32160	(\$0.01874)	\$0.60450
Block 2: All additional therms	\$0.26579		\$0.32160	(\$0.02109)	\$0.56630
Pipeline Capacity Charge Options (select one):					
Firm Pipeline Capacity Charge - Volumetric option (per therm):					\$0.12112
Firm Pipeline Capacity Charge - Peak Demand option (per therm of MDDV):					\$1.81
INTERRUPTIBLE SALES SERVICE CHARGES (C41SI) [1]:					
Customer Charge (per month):					\$250.00
Volumetric Charges (per therm)	Base Rate		Commodity Component [2]	Total Temporary Adjustments [3]	
Block 1: 1st 2,000 therms	\$0.30141		\$0.32160	(\$0.01921)	\$0.60380
Block 2: All additional therms	\$0.26556		\$0.32160	(\$0.02148)	\$0.56568
Plus: Interruptible Pipeline Capacity Charge - Volumetric (per therm):					\$0.04231
FIRM TRANSPORTATION SERVICE CHARGES (C41TF):					
Customer Charge (per month):					\$250.00
Transportation Charge (per month):					\$250.00
Volumetric Charges (per therm)	Base Rate			Total Temporary Adjustments [4]	
Block 1: 1st 2,000 therms	\$0.30077			\$0.00000	\$0.30077
Block 2: All additional therms	\$0.26500			\$0.00000	\$0.26500

(R)

(R)

(R)

(R)

(R)

(R)

(R)

[1] The Monthly Bill shall equal the sum of the Customer Charge, plus the Volumetric Charges, plus the Pipeline Capacity Charge selected by the Customer, plus any other charges that may apply from Schedule C and Schedule 10.

[2] The stated rate is the Company's Annual Sales WACOG. However, the Commodity Component to be billed will be dependent on Customer's Service Type Selection and may instead be Winter Sales WACOG, or Monthly Incremental Cost of Gas.

[3] Where applicable, as set forth in this rate schedule, the Account 191 portion of the Temporary Adjustments as set forth in Schedule 201 may not apply.

[4] Where applicable, as set forth in this rate schedule, the Account 191 portion of the Sales Service Temporary Adjustments as set forth in Schedule 201 may also apply.

(continue to Sheet 141.10)

Issued September 11, 2015
NWN WUTC Advice No. 15-09

Effective with service on
and after November 1, 2015

NORTHWEST NATURAL GAS COMPANY

WN U-6

Sixth Revision of Sheet 142.10.1

Cancels Fifth Revision of Sheet 142.10.1

RATE SCHEDULE 42 LARGE VOLUME NON-RESIDENTIAL SALES AND TRANSPORTATION SERVICE (continued)

MONTHLY SALES RATES – INTERRUPTIBLE SERVICE:

Effective: November 1, 2015

(T)

The rates shown in this Rate Schedule may not always reflect actual billing rates. See **SCHEDULE 200** for a list of applicable adjustments. Rates are subject to changes for purchased gas costs and technical rate adjustments.

INTERRUPTIBLE SALES SERVICE CHARGES [4]: (C42SI)					Billing Rates
Customer Charge (per month):					\$1,300.00
	Base Rate		Commodity Component [2]	Total Temporary Adjustments [3]	
Volumetric Charges (per therm):					
Block 1: 1st 10,000 therms	\$0.11856		\$0.32160	(\$0.02994)	\$0.41022
Block 2: Next 20,000 therms	\$0.10612		\$0.32160	(\$0.03082)	\$0.39690
Block 3: Next 20,000 therms	\$0.08138		\$0.32160	(\$0.03258)	\$0.37040
Block 4: Next 100,000 therms	\$0.06510		\$0.32160	(\$0.03373)	\$0.35297
Block 5: Next 600,000 therms	\$0.04340		\$0.32160	(\$0.03526)	\$0.32974
Block 6: All additional therms	\$0.01628		\$0.32160	(\$0.03719)	\$0.30069
Interruptible Pipeline Capacity Charge (per therm):					\$0.04231
Interruptible Sales Service Storage Charge (per therm of MDDV per month)					\$0.10208
INTERRUPTIBLE SALES SERVICE CHARGES [4]: (I42SI)					
Customer Charge (per month):					\$1,300.00
Volumetric Charges (per therm)					
Block 1: 1st 10,000 therms	\$0.11870		\$0.32160	(\$0.03411)	\$0.40619
Block 2: Next 20,000 therms	\$0.10625		\$0.32160	(\$0.03456)	\$0.39329
Block 3: Next 20,000 therms	\$0.08148		\$0.32160	(\$0.03544)	\$0.36764
Block 4: Next 100,000 therms	\$0.06518		\$0.32160	(\$0.03602)	\$0.35076
Block 5: Next 600,000 therms	\$0.04345		\$0.32160	(\$0.03679)	\$0.32826
Block 6: All additional therms	\$0.01630		\$0.32160	(\$0.03776)	\$0.30014
Interruptible Pipeline Capacity Charge (per therm):					\$0.04231
Interruptible Sales Service Storage Charge (per therm of MDDV per month)					\$0.10208

(R)

(R)

(R)

(R)

(R)

(R)

[2] Where applicable, as set forth in this rate schedule, the Account 191 portion of the Sales Service Temporary Adjustments as set forth in Schedule 201 may also apply.

[3] Where applicable, as set forth in this rate schedule, the Account 191 portion of the Temporary Adjustments as set forth in Schedule 201 may not apply.

[4] For Interruptible Sales Service, the Monthly Bill shall equal the sum of the Customer Charge, plus the Volumetric Charges, plus the Pipeline Capacity Charge, plus any other charges that apply from Schedule C or Schedule 10.

(continue to Sheet 142.11)

Issued September 11, 2015
NWN WUTC Advice No. 15-09

Effective with service on
and after November 1, 2015

NORTHWEST NATURAL GAS COMPANY

WN U-6

Eleventh Revision of Sheet 142.10

Cancels Tenth Revision of Sheet 142.10

RATE SCHEDULE 42 LARGE VOLUME NON-RESIDENTIAL SALES AND TRANSPORTATION SERVICE (continued)

MONTHLY SALES RATES - FIRM SERVICE:

Effective: November 1, 2015

(T)

The rates shown in this Rate Schedule may not always reflect actual billing rates. See **SCHEDULE 200** for a list of applicable adjustments. Rates are subject to changes for purchased gas costs and technical rate adjustments.

FIRM SALES SERVICE CHARGES [1]:					Billing Rates
Customer Charge (per month, all service types):					\$1,300.00
	Base Rate		Commodity Component [2]	Total Temporary Adjustments [3]	
42 CSF Volumetric Charges (per therm):					
Block 1: 1st 10,000 therms	\$0.11877		\$0.32160	(\$0.02512)	\$0.41525
Block 2: Next 20,000 therms	\$0.10632		\$0.32160	(\$0.02652)	\$0.40140
Block 3: Next 20,000 therms	\$0.08154		\$0.32160	(\$0.02935)	\$0.37379
Block 4: Next 100,000 therms	\$0.06523		\$0.32160	(\$0.03120)	\$0.35563
Block 5: Next 600,000 therms	\$0.04348		\$0.32160	(\$0.03366)	\$0.33142
Block 6: All additional therms	\$0.01630		\$0.32160	(\$0.03675)	\$0.30115
42 ISF Volumetric Charges (per therm):					
Block 1: 1st 10,000 therms	\$0.11871		\$0.32160	(\$0.03559)	\$0.40472
Block 2: Next 20,000 therms	\$0.10626		\$0.32160	(\$0.03591)	\$0.39195
Block 3: Next 20,000 therms	\$0.08149		\$0.32160	(\$0.03653)	\$0.36656
Block 4: Next 100,000 therms	\$0.06519		\$0.32160	(\$0.03694)	\$0.34985
Block 5: Next 600,000 therms	\$0.04347		\$0.32160	(\$0.03750)	\$0.32757
Block 6: All additional therms	\$0.01629		\$0.32160	(\$0.03819)	\$0.29970
Firm Service Distribution Capacity Charge (per therm of MDDV per month):					\$0.15748
Firm Sales Service Storage Charge (per therm of MDDV per month):					\$0.20415
Pipeline Capacity Charge Options (select one):					
Firm Pipeline Capacity Charge - Volumetric option (per therm):					\$0.12112
Firm Pipeline Capacity Charge - Peak Demand option (per therm of MDDV per month):					\$1.81

(R)

(R)

(R)

(R)

(R)

(R)

[1] For Firm Sales Service, the Monthly Bill shall equal the sum of the Customer Charge, plus the Volumetric Charges, plus the Distribution Capacity Charge, plus the Storage Capacity Charge, plus the Pipeline Capacity Charge selected by the Customer, plus any other charges that may apply from Schedule C or Schedule 10.

[2] The stated rate is the Company's Annual Sales WACOG. However, the Commodity Component to be billed will be dependent on Customer's Service Type Selection and may instead be Winter Sales WACOG or Monthly Incremental Cost of Gas.

[3] Where applicable, as set forth in this rate schedule, the Account 191 portion of the Temporary Adjustments as set forth in Schedule 201 may not apply.

(continue to Sheet 142.10.1)

Issued September 11, 2015
NWN WUTC Advice No. 15-09

Effective with service on
and after November 1, 2015

NORTHWEST NATURAL GAS COMPANY

WN U-6

Eleventh Revision of Sheet 142.11

Cancels Tenth Revision of Sheet 142.11

RATE SCHEDULE 42 LARGE VOLUME NON-RESIDENTIAL SALES AND TRANSPORTATION SERVICE (continued)

MONTHLY TRANSPORTATION RATES:

Effective: November 1, 2015

(T)

The rates shown in this Rate Schedule may not always reflect actual billing rates. See **SCHEDULE 200** for a list of applicable adjustments. Rates are subject to changes for purchased gas costs and technical rate adjustments.

FIRM TRANSPORTATION SERVICE CHARGES (I42TF and C42TF) [1]:					Billing Rates
Customer Charge (per month):					\$1,300.00
Transportation Charge (per month):					\$250.00
Volumetric Charges (per therm)	Base Rate			Total Temporary Adjustments [2]	
Block 1: 1st 10,000 therms	\$0.11818			\$0.00000	\$0.11818
Block 2: Next 20,000 therms	\$0.10579			\$0.00000	\$0.10579
Block 3: Next 20,000 therms	\$0.08112			\$0.00000	\$0.08112
Block 4: Next 100,000 therms	\$0.06490			\$0.00000	\$0.06490
Block 5: Next 600,000 therms	\$0.04327			\$0.00000	\$0.04327
Block 6: All additional therms	\$0.01622			\$0.00000	\$0.01622
Firm Service Distribution Capacity Charge (per therm of MDDV per month):					\$0.15748
INTERRUPTIBLE TRANSPORTATION SERVICE CHARGES (I42TI and C42TI) [3]:					
Customer Charge (per month):					\$1,300.00
Transportation Charge (per month):					\$250.00
Volumetric Charges (per therm)	Base Rate			Temporary Adjustments [2]	
Block 1: 1st 10,000 therms	\$0.11818			\$0.00000	\$0.11818
Block 2: Next 20,000 therms	\$0.10579			\$0.00000	\$0.10579
Block 3: Next 20,000 therms	\$0.08112			\$0.00000	\$0.08112
Block 4: Next 100,000 therms	\$0.06490			\$0.00000	\$0.06490
Block 5: Next 600,000 therms	\$0.04327			\$0.00000	\$0.04327
Block 6: All additional therms	\$0.01622			\$0.00000	\$0.01622

[1] For Firm Transportation Service, the Monthly Bill shall equal the sum of the Customer Charge, plus Transportation Charge, plus the Volumetric Charges, plus the Distribution Capacity Charge, plus any other charges that may apply from Schedule C or Schedule 10.

[2] Where applicable, as set forth in this rate schedule, the Account 191 portion of the Sales Service Temporary Adjustments as set forth in Schedule 201 may also apply.

[3] For Interruptible Transportation Service, the Monthly Bill shall equal the sum of the Customer Charge, plus Transportation Charge, plus the Volumetric Charges, plus any other charges that may apply from Schedule C or Schedule 10.

Issued September 11, 2015
NWN WUTC Advice No. 15-09

Effective with service on
and after November 1, 2015

NORTHWEST NATURAL GAS COMPANY

WN U-6

Tenth Revision of Sheet 143.6

Cancels Ninth Revision of Sheet 143.6

RATE SCHEDULE 43 HIGH VOLUME NON-RESIDENTIAL FIRM AND INTERRUPTIBLE TRANSPORTATION SERVICE (continued)

MONTHLY RATE:

Effective November 1, 2015

(T)

The rates shown below may not always reflect actual billing rates. See **Schedule 200** for a list of applicable adjustments. Rates are subject to changes for purchased gas costs and technical rate adjustments.

FIRM TRANSPORTATION SERVICE CHARGES (C43TF and I43TF)				
				Billing Rates
Customer Charge:				\$38,000.00
Transportation Charge:				\$250.00
Volumetric Charge	Base Rate		Total Temporary Adjustment [1]	
Per therm, all therms	\$0.00499		\$0.00000	\$0.00499
Firm Service Distribution Capacity Charge: Per therm of MDDV per month				\$0.15748
Minimum Monthly Bill: Customer Charge, plus Transportation Charge, plus Firm Service Distribution Capacity Charge, plus any other charges that may apply from Schedule C and Schedule 10 .				

INTERRUPTIBLE TRANSPORTATION SERVICE CHARGES (C43TI and I43TI)				
				Billing Rates
Customer Charge:				\$38,000.00
Transportation Charge:				\$250.00
Volumetric Charge:	Base Rate		Total Temporary Adjustment [1]	
Per therm, all therms	\$0.00499		\$0.00000	\$0.00499
Minimum Monthly Bill: Customer Charge, plus Transportation Charge, plus any other charges that may apply from Schedule C and Schedule 10 .				

[1] Where applicable, as set forth in this rate schedule, the Account 191 portion of the Temporary Adjustments as set forth in Schedule 201 shall apply.

Issued September 11, 2015
NWN WUTC Advice No. 15-09

Effective with service on
and after November 1, 2015

BEFORE THE
WASHINGTON UTILITIES & TRANSPORTATION COMMISSION

NW NATURAL
SUPPORTING MATERIALS

Combined Effects

NWN WUTC Advice No. 15-09 / UG-_____

September 11, 2015

NW NATURAL

EXHIBIT A

Supporting Material

Combined Effects

NWN WUTC ADVICE NO. 15-09 / UG-_____

Description	Page
Change in Average Bill by Rate Schedule	1
Calculation of Proposed Rates – Summary	2
Calculation of Proposed Rates – Detail	3
Combined Effects on Revenue	4
Comfort Zone – September 2015	5
NW Natural Press Release – Falling As Prices Mean Lower Bills This Winter	7

NW Natural
Rates & Regulatory Affairs
2015-2016 PGA Filing - Washington: September Filing
PGA Effects on Average Bill by Rate Schedule

Calculation of Effect on Customer Average Bill by Rate Schedule [1]

	Washington PGA Normalized Volumes page, Column D	Therms in Block	Normal Therms Monthly Average use	Minimum Monthly Charge	Current 11/1/2014 Billing Rates	11/1/2014 Current Average Bill	Proposed 11/1/2015 Total Rates	Proposed 11/1/2015 Total Average Bill	Proposed 11/1/2015 Total % Bill Change	
					F=D+(C * E)		H=D+(C * G)		I=(H - F)/F	
Schedule	Block	A	B	C	D	E	F	G	H	I
1R		195,073	N/A	20.0	3.47	1.29732	29.42	1.13448	26.16	-11.1%
1C		33,275	N/A	75.0	3.47	1.28886	100.13	1.12725	88.01	-12.1%
2R		47,349,001	N/A	58.0	7.00	1.01057	65.61	0.84733	56.15	-14.4%
3 CFS		16,528,921	N/A	245.0	15.00	1.01161	262.84	0.84836	222.85	-15.2%
3 IFS		494,140	N/A	2,167.0	15.00	0.99181	2,164.25	0.82839	1,810.12	-16.4%
27		292,826	N/A	51.0	6.00	0.84196	48.94	0.67818	40.59	-17.1%
41C Firm Sales	Block 1	2,304,186	2,000	3,785.0	250.00	0.76423		0.60450		
	Block 2	1,829,429	all additional			0.72611		0.56630		
	TOTAL						3,074.57		2,469.85	-19.7%
41C Interr Sales	Block 1	0	2,000	0.0	250.00	0.78165		0.60380		
	Block 2	0	all additional			0.74363		0.56568		
	TOTAL						250.00		250.00	0.0%
41 Firm Trans	Block 1	146,151	2,000	3,041.0	500.00	0.30077		0.30077		
	Block 2	182,278	all additional			0.26500		0.26500		
	TOTAL						1,377.41		1,377.41	0.0%
41I Firm Sales	Block 1	197,178	2,000	3,115.0	250.00	0.74924		0.58997		
	Block 2	176,667	all additional			0.71289		0.55347		
	TOTAL						2,543.35		2,047.06	-19.5%
41I Interr Sales	Block 1	0	2,000	0.0	250.00	0.76749		0.58964		
	Block 2	0	all additional			0.73116		0.55320		
	TOTAL						250.00		250.00	0.0%
42C Firm Sales	Block 1	527,889	10,000	10,034.0	1,300.00	0.57511		0.41525		
	Block 2	193,130	20,000			0.56130		0.40140		
	Block 3	1,433	20,000			0.53384		0.37379		
	Block 4	0	100,000			0.51575		0.35563		
	Block 5	0	600,000			0.49166		0.33142		
	Block 6	0	all additional			0.46152		0.30115		
	TOTAL						7,070.18		5,466.15	-22.7%
42I Firm Sales	Block 1	1,069,486	10,000	13,432.0	1,300.00	0.56438		0.40472		
	Block 2	653,627	20,000			0.55170		0.39195		
	Block 3	49,887	20,000			0.52646		0.36656		
	Block 4	0	100,000			0.50986		0.34985		
	Block 5	0	600,000			0.48774		0.32757		
	Block 6	0	all additional			0.46004		0.29970		
	TOTAL						8,837.23		6,692.37	-24.3%
42 Firm Trans	Block 1	1,203,966	10,000	38,977.0	1,550.00	0.11818		0.11818		
	Block 2	1,247,863	20,000			0.10579		0.10579		
	Block 3	960,088	20,000			0.08112		0.08112		
	Block 4	1,401,040	100,000			0.06490		0.06490		
	Block 5	331,993	600,000			0.04327		0.04327		
	Block 6	0	all additional			0.01622		0.01622		
	TOTAL						5,575.81		5,575.81	0.0%
42C Interr Sales	Block 1	241,648	10,000	38,930.0	1,300.00	0.58869		0.41022		
	Block 2	468,617	20,000			0.57539		0.39690		
	Block 3	190,313	20,000			0.54896		0.37040		
	Block 4	33,749	100,000			0.53156		0.35297		
	Block 5	0	600,000			0.50838		0.32974		
	Block 6	0	all additional			0.47941		0.30069		
	TOTAL						23,596.91		16,647.87	-29.4%
42I Interr Sales	Block 1	151,102	10,000	7,139.0	1,300.00	0.58345		0.40619		
	Block 2	105,893	20,000			0.57071		0.39329		
	Block 3	0	20,000			0.54537		0.36764		
	Block 4	0	100,000			0.52870		0.35076		
	Block 5	0	600,000			0.50646		0.32826		
	Block 6	0	all additional			0.47868		0.30014		
	TOTAL						5,465.25		4,199.79	-23.2%
42 Inter Trans	Block 1	947,868	10,000	76,085.0	1,550.00	0.11818		0.11818		
	Block 2	1,645,477	20,000			0.10579		0.10579		
	Block 3	1,229,017	20,000			0.08112		0.08112		
	Block 4	3,810,108	100,000			0.06490		0.06490		
	Block 5	2,410,781	600,000			0.04327		0.04327		
	Block 6	0	all additional			0.01622		0.01622		
	TOTAL						8,162.92		8,162.92	0.0%
43 Firm Trans		0	N/A	0.0	38,000.00	0.00499	38,000.00	0.00499	38,000.00	N/A
43 Interr Trans		0	N/A	0.0	38,000.00	0.00499	38,000.00	0.00499	38,000.00	N/A
	Intentionally blank									

[1] Rate Schedule 41 and 42 customers may choose demand charges at a volumetric rate or based on MDDV. For convenience of presentation, demand charges are not included in the calculations for those schedules.

Sources:

Direct Inputs	per Tariff	per Tariff
Rates in summary	Column A	

NW Natural
Rates & Regulatory Affairs
2015-2016 PGA Filing - Washington: September Filing
Calculation of Proposed Rates - SUMMARY

		11/1/2014	Net change	Net change	Proposed	Net change	Change due to	Proposed
		Billing	WACOG	Demand [1]	Rates	Temporary	Storage Recall	11/1/2015
		Rates			PGA Only [1]	Increments	for Core	Billing
								Rates [1]
					D=A+B+C			G=D+E+F
Schedule	Block	A	B	C	D	E	F	G
1R		1.29732	(0.10713)	(0.00405)	1.18614	(0.05244)	0.00078	1.13448
1C		1.28886	(0.10713)	(0.00405)	1.17768	(0.05109)	0.00066	1.12725
2R		1.01057	(0.10713)	(0.00405)	0.89939	(0.05255)	0.00049	0.84733
3 CFS		1.01161	(0.10713)	(0.00405)	0.90043	(0.05251)	0.00044	0.84836
3 IFS		0.99181	(0.10713)	(0.00405)	0.88063	(0.05263)	0.00039	0.82839
27		0.84196	(0.10713)	(0.00405)	0.73078	(0.05294)	0.00034	0.67818
41C Firm Sales	Block 1	0.76423	(0.10713)	0.00000	0.65710	(0.05294)	0.00034	0.60450
	Block 2	0.72611	(0.10713)	0.00000	0.61898	(0.05298)	0.00030	0.56630
41C Interr Sales	Block 1	0.78165	(0.10713)	0.00000	0.67452	(0.07105)	0.00033	0.60380
	Block 2	0.74363	(0.10713)	0.00000	0.63650	(0.07111)	0.00029	0.56568
41 Firm Trans	Block 1	0.30077	0.00000	0.00000	0.30077	0.00000	0.00000	0.30077
	Block 2	0.26500	0.00000	0.00000	0.26500	0.00000	0.00000	0.26500
41I Firm Sales	Block 1	0.74924	(0.10713)	0.00000	0.64211	(0.05249)	0.00035	0.58997
	Block 2	0.71289	(0.10713)	0.00000	0.60576	(0.05260)	0.00031	0.55347
41I Interr Sales	Block 1	0.76749	(0.10713)	0.00000	0.66036	(0.07105)	0.00033	0.58964
	Block 2	0.73116	(0.10713)	0.00000	0.62403	(0.07112)	0.00029	0.55320
42C Firm Sales	Block 1	0.57511	(0.10713)	0.00000	0.46798	(0.05296)	0.00023	0.41525
	Block 2	0.56130	(0.10713)	0.00000	0.45417	(0.05298)	0.00021	0.40140
	Block 3	0.53384	(0.10713)	0.00000	0.42671	(0.05308)	0.00016	0.37379
	Block 4	0.51575	(0.10713)	0.00000	0.40862	(0.05312)	0.00013	0.35563
	Block 5	0.49166	(0.10713)	0.00000	0.38453	(0.05319)	0.00008	0.33142
	Block 6	0.46152	(0.10713)	0.00000	0.35439	(0.05327)	0.00003	0.30115
42I Firm Sales	Block 1	0.56438	(0.10713)	0.00000	0.45725	(0.05273)	0.00020	0.40472
	Block 2	0.55170	(0.10713)	0.00000	0.44457	(0.05280)	0.00018	0.39195
	Block 3	0.52646	(0.10713)	0.00000	0.41933	(0.05291)	0.00014	0.36656
	Block 4	0.50986	(0.10713)	0.00000	0.40273	(0.05299)	0.00011	0.34985
	Block 5	0.48774	(0.10713)	0.00000	0.38061	(0.05311)	0.00007	0.32757
	Block 6	0.46004	(0.10713)	0.00000	0.35291	(0.05324)	0.00003	0.29970
42 Firm Trans	Block 1	0.11818	0.00000	0.00000	0.11818	0.00000	0.00000	0.11818
	Block 2	0.10579	0.00000	0.00000	0.10579	0.00000	0.00000	0.10579
	Block 3	0.08112	0.00000	0.00000	0.08112	0.00000	0.00000	0.08112
	Block 4	0.06490	0.00000	0.00000	0.06490	0.00000	0.00000	0.06490
	Block 5	0.04327	0.00000	0.00000	0.04327	0.00000	0.00000	0.04327
	Block 6	0.01622	0.00000	0.00000	0.01622	0.00000	0.00000	0.01622
42C Interr Sales	Block 1	0.58869	(0.10713)	0.00000	0.48156	(0.07148)	0.00014	0.41022
	Block 2	0.57539	(0.10713)	0.00000	0.46826	(0.07149)	0.00013	0.39690
	Block 3	0.54896	(0.10713)	0.00000	0.44183	(0.07153)	0.00010	0.37040
	Block 4	0.53156	(0.10713)	0.00000	0.42443	(0.07154)	0.00008	0.35297
	Block 5	0.50838	(0.10713)	0.00000	0.40125	(0.07156)	0.00005	0.32974
	Block 6	0.47941	(0.10713)	0.00000	0.37228	(0.07161)	0.00002	0.30069
42I Interr Sales	Block 1	0.58345	(0.10713)	0.00000	0.47632	(0.07041)	0.00028	0.40619
	Block 2	0.57071	(0.10713)	0.00000	0.46358	(0.07054)	0.00025	0.39329
	Block 3	0.54537	(0.10713)	0.00000	0.43824	(0.07079)	0.00019	0.36764
	Block 4	0.52870	(0.10713)	0.00000	0.42157	(0.07096)	0.00015	0.35076
	Block 5	0.50646	(0.10713)	0.00000	0.39933	(0.07117)	0.00010	0.32826
	Block 6	0.47868	(0.10713)	0.00000	0.37155	(0.07145)	0.00004	0.30014
42 Inter Trans	Block 1	0.11818	0.00000	0.00000	0.11818	0.00000	0.00000	0.11818
	Block 2	0.10579	0.00000	0.00000	0.10579	0.00000	0.00000	0.10579
	Block 3	0.08112	0.00000	0.00000	0.08112	0.00000	0.00000	0.08112
	Block 4	0.06490	0.00000	0.00000	0.06490	0.00000	0.00000	0.06490
	Block 5	0.04327	0.00000	0.00000	0.04327	0.00000	0.00000	0.04327
	Block 6	0.01622	0.00000	0.00000	0.01622	0.00000	0.00000	0.01622
43 Firm Trans		0.00499	0.00000	0.00000	0.00499	0.00000	0.00000	0.00499
43 Interr Trans		0.00499	0.00000	0.00000	0.00499	0.00000	0.00000	0.00499

Intentionally blank

Sources:

Direct Inputs	12-13 PGA
Rates in detail	Column F - B Column G+H-C-D Column K - J Column N

[1] Rate Schedule 41 and 42 customers may choose demand charges at a volumetric rate or based on MDDV.

NW Natural
Rates & Regulatory Affairs
2015-16 Combined Effects - Washington: September Filing
Tariff Advice 15-9: Combined Effects on Revenue

	<u>Amount</u>
1	
2	<u>Purchased Gas Cost Adjustment (PGA)</u>
3	
4	Gas Cost Change (\$7,830,145)
5	
6	Capacity Cost Change <u>(273,782)</u>
7	
8	Total PGA Change <u>(8,103,927)</u>
9	
10	<u>Temporary Rate Adjustments</u>
11	
12	Proposed Temporary Increments (918,199)
13	
14	Removal of Current Temporary Increments <u>(2,917,355)</u>
15	
16	Total Net Temporary Rate Adjustment <u>(3,835,554)</u>
17	
18	<u>Permanent Rate Adjustments</u>
19	
20	Storage Recall for Core <u>33,076</u>
21	
22	TOTAL OF ALL COMPONENTS OF ALL RATE CHANGES <u><u>(\$11,906,405)</u></u>
23	
24	
25	
26	2013 Washington CBR Normalized Total Revenues \$73,292,422
27	
28	Effect of this filing, as a percentage change -16.25%

Comfort Zone



WASHINGTON NATURAL GAS SAFETY AND CONSUMER INFORMATION • SEPTEMBER 2015 • NWNATURAL.COM

Falling Gas Prices Mean **LOWER BILLS THIS WINTER**

For the fifth time in seven years, NW Natural is requesting a rate reduction for Washington customers. If approved by the Washington Utilities and Transportation Commission (WUTC), your rates will **decrease by more than 14 percent** starting Nov. 1. This means you'll be paying less for natural gas now than you did 15 years ago.

HOW THE RATE FILING PROCESS WORKS

Each year, NW Natural files its purchased gas adjustment (PGA) with the WUTC. The purpose of the filing is to true-up differences between estimated and actual gas costs and to establish the cost of gas to be applied

to customer bills for the Nov. through Oct. PGA cycle.

The company adjusts for gas cost changes each year. NW Natural does not profit from increases in gas costs. When it files the PGA, NW Natural typically files to revise rates for other annual adjustments based on ongoing agreements with the WUTC.

Regulators will issue a final decision on rates by the end of October, with new rates effective Nov. 1.

WHAT YOU CAN EXPECT

The filing calls for a **14.4 percent drop** in residential rates and a **15.2 percent**



reduction for commercial customers. That means the typical residential customer using an average of 58 therms per month would pay **about \$9.46 less**, and the typical commercial customer would pay **about \$40.00 less** per month.

For more information, visit the Rates & Regulations section of nwnatural.com or call us at **503-226-4211** and ask for the Rates & Regulatory Department.

Get **EARTHQUAKE-READY**

September is National Preparedness Month, a time to make sure your home and gas equipment are secure in case an earthquake or other natural disaster occurs.

BEFORE AN EARTHQUAKE

Reduce potential damage by securing your natural gas equipment. Replace semi-rigid gas connectors with flexible connectors. Store combustible items like paint cans and rags away from your furnace and water heater.



AFTER AN EARTHQUAKE

- Check to see that no flammable items have fallen or spilled near natural gas equipment.
- If you detect a strong natural gas odor, it's always safest to leave the area on foot and then call NW Natural at **800-882-3377**.
- **DO NOT** turn off your natural gas unless you smell gas, hear gas blowing or see other signs of a leak **AND ONLY** if you can do so safely.

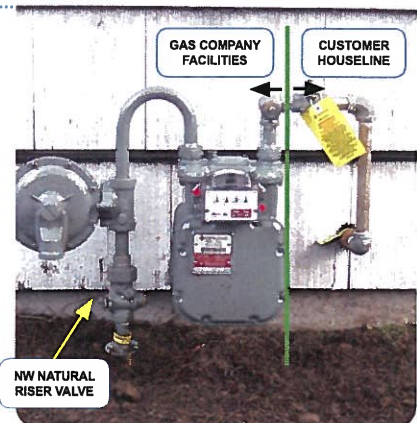
- **DO NOT** turn your gas back on. Call NW Natural. We'll need to inspect appliances and pipelines to ensure that it is safe to restore service. In the event of a major emergency, this could take several days.

WHAT ABOUT SHUT-OFF VALVES?

NW Natural has thousands of emergency shut-off valves to control our system. Some close automatically if there is a change in pressure; some are controlled remotely from our Gas Control Center; and others are manually operated.

NW Natural has installed more than 200,000 excess flow valves (EFVs) throughout our system that should automatically shut off gas if the service line is damaged.

If you are considering installing an earthquake shut-off valve at your home, carefully evaluate the pros



and cons beforehand. If you choose to install one, be sure to use a qualified, licensed contractor, and make sure they place it on your side of the meter. Please note, NW Natural cannot install, maintain, service or reset your earthquake shut-off valve if it shuts off inadvertently.

If your shut-off valve turns off the gas, **DO NOT** attempt to turn it back on yourself. Call your installation contractor to reset it and restore service.

LEARN MORE AT NWNatural.com/Residential/Safety/EarthquakePreparedness

Fall DEALS

Visit NWNatural.com/offers and check out the deals available for two ways to keep your home comfortable this fall.

UP TO \$550 BACK

Efficiently heat your home for years to come with this special offer.

Get up to \$550 back in rebates and incentives when you upgrade your home with a new 95 percent high-efficiency natural gas furnace installed by a NW Natural Preferred Contractor.



UP TO \$500 BACK

Take the chill out of the air with the warm glow and efficient zone heating of a new natural gas fireplace.

Get up to \$500 back when you install a qualifying natural gas fireplace, insert or free-standing stove. Experience easy installation through a single recommended hearth retailer.

Take advantage of one or both of these offers now as they expire on Dec. 31, 2015. Details are located at NWNatural.com/offers.



Energy Savings WITH A VIEW!

New high-efficiency windows not only look good, they can help you save on energy costs and make your home more comfortable year-round. Decrease drafts and air leaks, reduce condensation and increase your home's value by upgrading to ENERGY STAR® qualified windows. Plus, when you replace your old windows, your heating and cooling costs could shrink by up to 12 percent.



Upgrading your windows is easy with help from Energy Trust of Oregon. You can get **cash incentives** of up to \$4 per square foot of windows installed to make your upgrade more affordable, and access a network of local contractors who can install your new windows. Plus, you can receive an additional **\$100 cash back** when you install a second qualifying energy-saving home improvement.*



Visit energytrust.org/windows or call **866-368-7878** to find a contractor today.

* Incentives are subject to funding availability and may change. See website for qualifications.

In Our COMMUNITY



Join us at Friends of the Children's annual **Holidays with the Trail Band** and support a cause that makes a difference in the lives of children facing the highest risk.

The Trail Band is a collection of some of Portland's best-known musicians who come together each year to celebrate the holidays and boost the spirit of all who get to hear them. Join us, and see for yourself why this event has become a new holiday tradition for so many Oregonians.

SHOW SCHEDULE

Friday • Dec. 11 • 7pm

Saturday • Dec. 12 • 3pm and 7pm

Sunday • Dec. 13 • 3pm and 7pm

LOCATION

The Aladdin Theatre
3017 SE Milwaukie Avenue
Portland, OR 97202

Tickets on sale October 5:
FriendsPDX.org/trailband

Use presale promo code:
FriendsNWN

FOLLOW US:





For Immediate Release

Sept. 11, 2015

Media Contact: Melissa Moore, 503-220-2436, msm@nwnatural.com

Falling Gas Prices Mean Lower Bills This Winter
Washington Gas Customers to See a 14% Reduction

PORTLAND, Ore. —For the fifth time in seven years, NW Natural (**NYSE:NWN**), is requesting a rate reduction for Washington customers. If approved by the Washington Utilities and Transportation Commission (WUTC), customer rates will decrease by more than 14% starting Nov. 1.

This means customers will be paying less for natural gas than they did 15 years ago.

“This is great news for customers,” said Randy Friedman, director of NW Natural gas supply. “The cost of natural gas has continued to drop this year and is expected to remain low for the next few years.”

What customers can expect

The filing calls for a 14.4% drop in residential rates and a 15.2% reduction for commercial customers. That means the typical residential customer using an average of 58 therms per month would pay about \$9.46 less, and the typical commercial customer would pay about \$40 less per month.

How the rate filing process works

Each year, NW Natural files its purchased gas adjustment (PGA) with the WUTC. The purpose of the filing is to true-up differences between estimated and actual gas costs and to establish the cost of gas to be applied to customer bills for the Nov. through Oct. PGA cycle.

The company adjusts for gas cost changes each year. NW Natural does not profit from increases in gas costs. When it files the PGA, NW Natural typically files to revise rates for other annual adjustments based on ongoing agreements with the WUTC.

Regulators will issue a final decision on rates by the end of October, with new rates effective Nov. 1. For more information, visit the Rates & Regulations section of nwnatural.com or call 503.226.4211 and ask for the Rates & Regulatory Department.

About NW Natural

NW Natural (NYSE:NWN) is headquartered in Portland, Ore., and provides natural gas service to about 707,000 residential, commercial, and industrial customers in Oregon and Southwest Washington. It is the largest independent natural gas utility in the Pacific Northwest. Additional information is available at nwnatural.com.