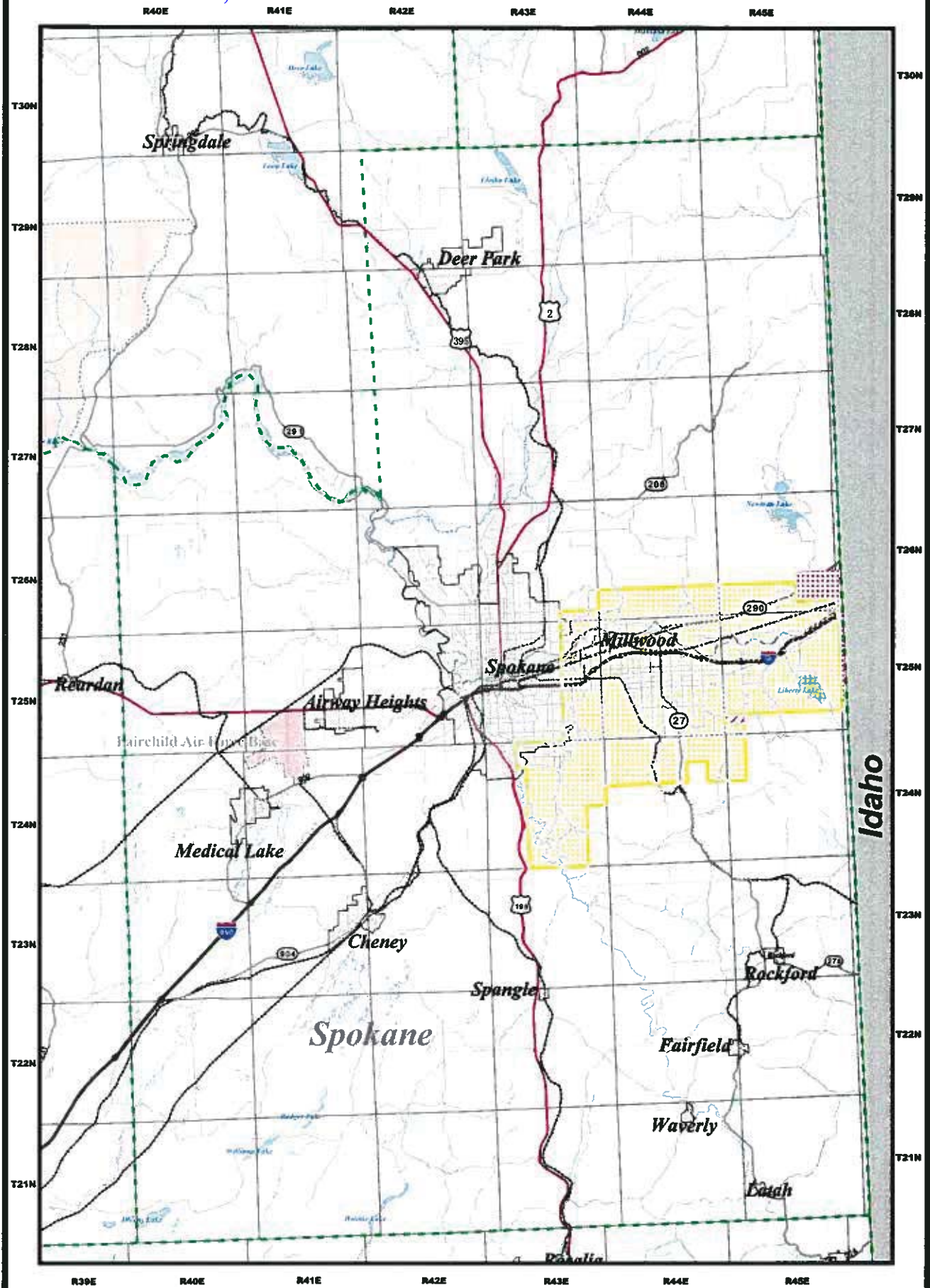
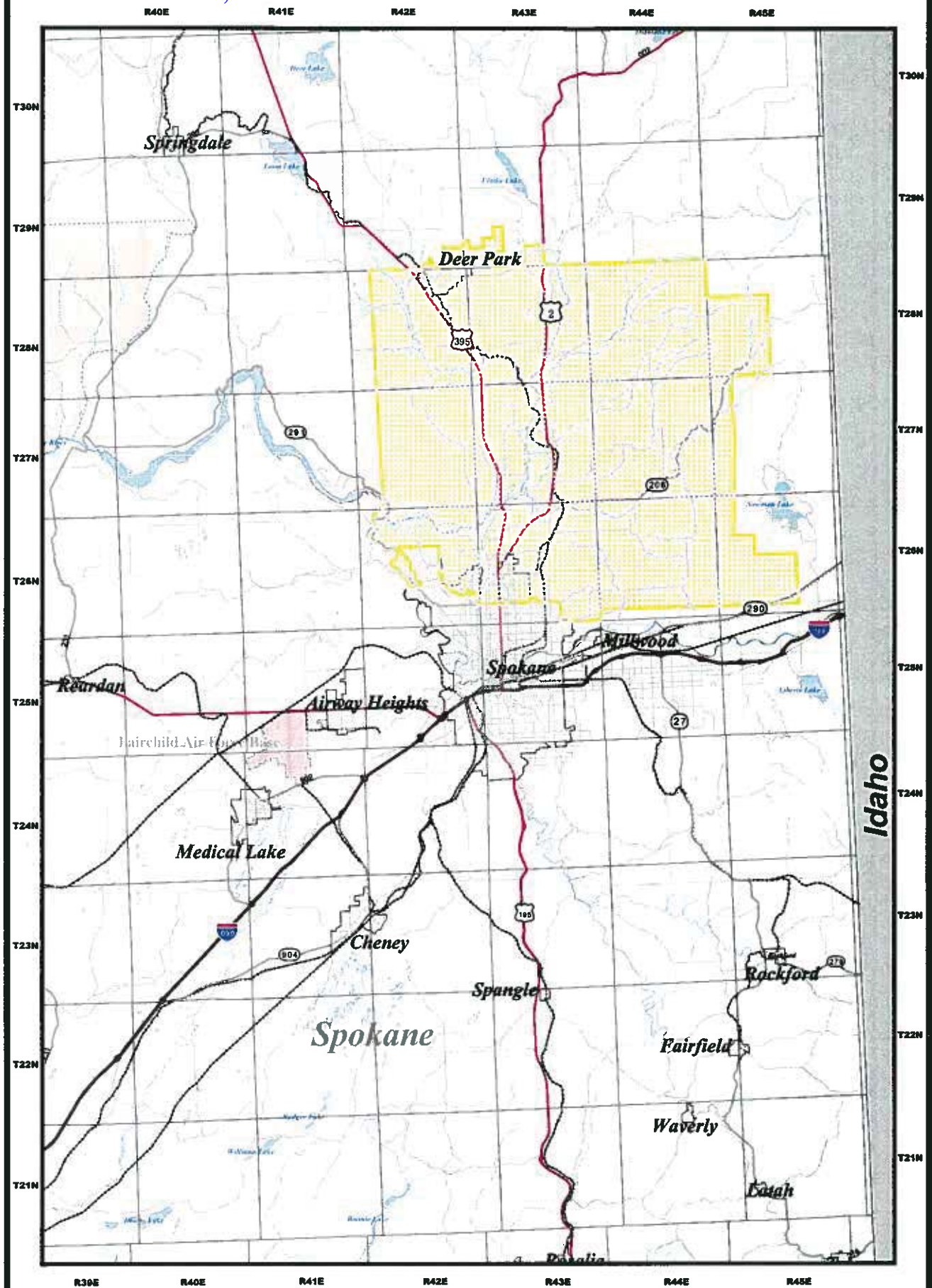


<p>Scale: 1 : 225,000</p>	<p><b>PID410 Solid Waste Service</b></p> <p><b>PID411 Solid Waste Svcs., Excluding Service in Cont. 28 cu. yds. &gt;</b></p> <p><b>PID412 Solid Waste Svcs., Excluding Service in Cont. 28 cu. yds. &gt;</b></p>	<p><b>Cities</b></p> <p><b>County Lines</b></p> <p><b>Interstate Highway</b></p> <p><b>Local Roads</b></p>	<p><b>Rail Lines</b></p> <p><b>State Highway</b></p> <p><b>Township Lines</b></p> <p><b>U.S. Highway</b></p> <p><b>Water (River, Creek)</b></p>	<p><b>National Forest</b></p> <p><b>National Park Service</b></p> <p><b>Military Installations</b></p> <p><b>Native American Lands</b></p> <p><b>Water (Ocean, Lake)</b></p>	<p><b>UTILITIES AND TRANSPORTATION COMMISSION</b>  <b>WASHINGTON STATE SOLID WASTE CERTIFICATE AUTHORITY</b>          April 2007  <b>Waste Management of WA, Inc. G-237</b>  <b>Application No. TG-070410 Effective 04/30/07</b>  <b>Service Area Map - Spokane County</b>  <b>Tariff's Appendix A Map</b></p>	<p><b>WASHINGTON STATE</b>  <b>UTC</b>  <small>UTILITY AND TRANSPORTATION COMMISSION</small></p> <p>For information contact:          Amy Deaton          Solid Waste Section          (509) 486-1300</p>
---------------------------	--	--	---	--	--	---





	<p><b>PID410 Solid Waste Service (Rates Service Area)</b></p>	<p><b>PID411 Solid Waste Svcs., Eudging Service in Cont. 20 cu. yds. (Rates Service Area)</b></p>	<p><b>PID411 Solid Waste Svcs., Exc. Service in Cont. 20 cu. yds. (Rates Service Area)</b></p>	<p><b>UTILITIES AND TRANSPORTATION COMMISSION</b>  <b>WASHINGTON STATE SOLID WASTE CERTIFICATE AUTHORITY</b>          April 2007</p> <p>Waste Management of WA, Inc. G-237</p> <p>Application No. TG-070410 Effective 04/30/07          Service Area Map - Spokane County          Tariff's Appendix B</p>	<p><b>UTC</b>          U.T. &amp; TRANS. COMM.          2007 004-1240</p> <p>For information contact:          Ray Deane          Solid Waste Section          (509) 864-1240</p>
	<p><b>City</b></p> <p><b>County Lines</b></p> <p><b>Interstate Highway</b></p> <p><b>Local Roads</b></p>	<p><b>Rail Lines</b></p> <p><b>State Highway</b></p> <p><b>Township Lines</b></p> <p><b>U.S. Highway</b></p> <p><b>Water (River, Creek)</b></p>	<p><b>National Forest</b></p> <p><b>National Park Service</b></p> <p><b>Military Installations</b></p> <p><b>Native American Lands</b></p> <p><b>Water (Ocean, Lake)</b></p>		



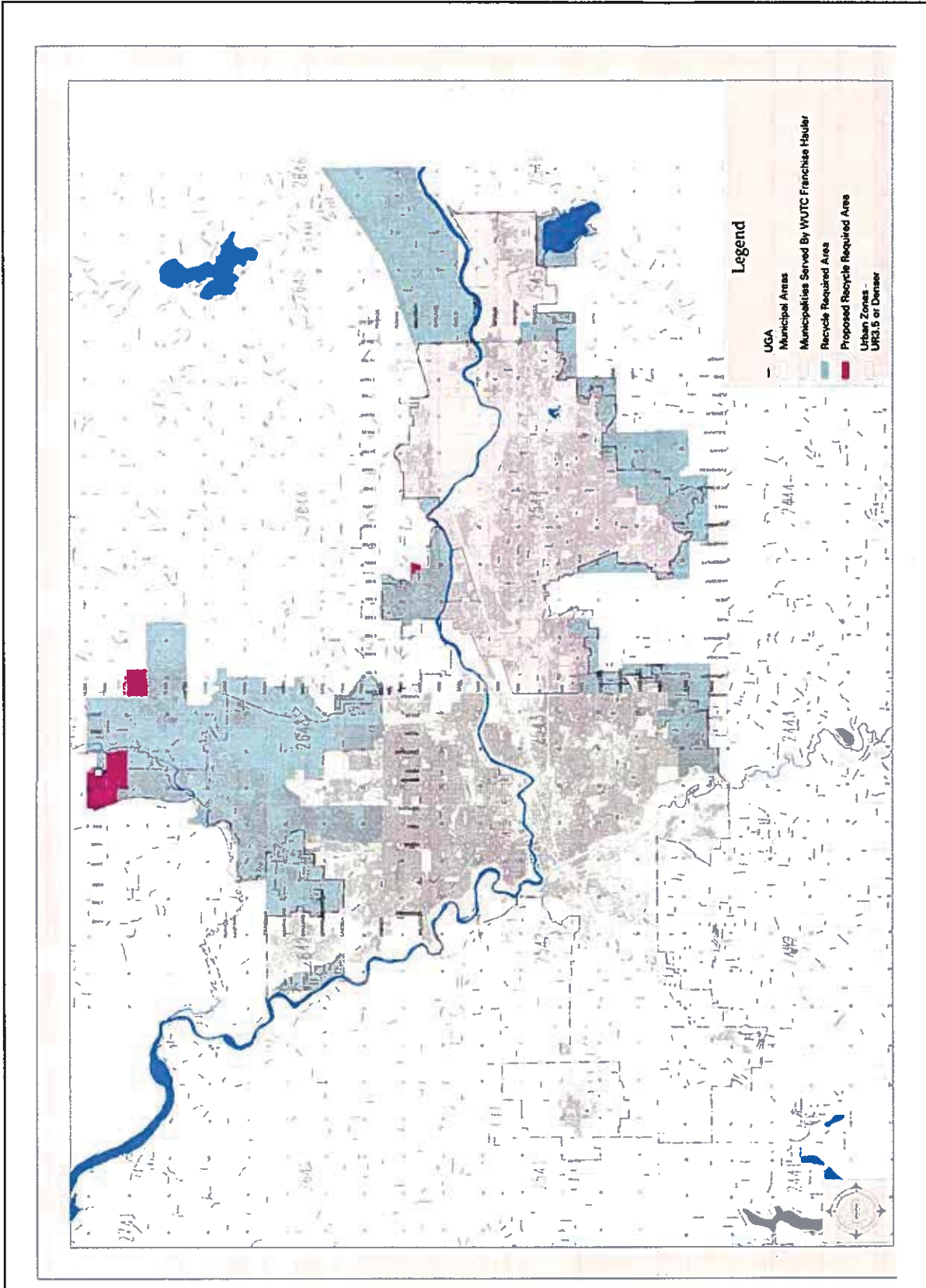
PID410 Solid Waste Service (Rates Service Area)	City	Rail Lines	National Forest
County Lines	Interstate Highway	State Highway	National Park Service
Local Roads	U.S. Highway	Township Lines	Military Installations
	Water (River, Creek)	U.S. Highway	Native American Lands
	Water (Ocean, Lake)	Water (River, Creek)	Water (Ocean, Lake)

Data used to create this map were generated at a scale of 1:22,500. Use of this information for purposes requiring a greater accuracy is not recommended.

UTILITIES AND TRANSPORTATION COMMISSION  
 WASHINGTON STATE SOLID WASTE CERTIFICATE AUTHORITY  
 April 2007  
 Waste Management of WA, Inc. G-237  
 Application No. TG-070410 Effective 04/30/07  
 Service Area Map - Spokane County  
 Tariff's Appendix C

For information contact:  
 Perry Dalton  
 Solid Waste Division  
 (206) 464-1248





Tariff 15, Appendix D