

PRELIMINARY STATEMENT (Continued)

III. EXCHANGES

Telephone service is provided in the following exchanges as authorized by the Washington Utilities and Transportation Commission:

Arletta	Kingston	
Ames Lake	Lakebay	
Basin City	Long Beach	(D)
		(D)
	Mathews Corner	(D)
Carnation	McCleary	
Cheney	Medical Lake	
Chewelah	Mesa	
	Mineral	(D)
	Montesano	(D)
Clearwater	Morton	
Connell		(D)
Creston	North Bend	
Davenport		(D)
	Orting	(D)
Elma	Packwood	
Eltopia	Puget Island (Cathlamet)	
Fall City	Randle	
Fox Island	Reardan	
Forks	San Juan**	(N)
	Snoqualmie Pass	(D)
Gig Harbor	South Prairie	
Glenoma	Spangle	
	Twisp	(D)
Hunters	Vashon	
Kahlotus	Washtucna	
Kettle Falls	Winthrop	

**** San Juan includes the geographical areas formerly served by the Friday Harbor, Lopez, East Sound and Blakely exchanges.**

(N)
(N)

BASIC EXCHANGE SERVICE

Classification of Exchanges in Accordance with Total Central Office
 Exchange Access Lines and Equivalents in the Local Service Calling Area

Group I
(1 to 5,000 Access Lines)

Basin City	Kahlotus	Puget Island (Cathlamet)	(T)
Connell	Mesa	Randle	
Creston	Mineral	Twisp	
Davenport	Morton	Washtucna	
Glenoma	Packwood	Winthrop	(T)

Group II
(5,001 to 20,000 Access Lines)

Chewelah	Forks	Mathews Corner	(T)(D)
Clearwater	Hunters	McCleary	
Elma	Kettle Falls	San Juan	(N)
Eltopia	Long Beach		(T)
			(D)

Group III
(20,001-100,000 Access Lines)

Kingston	(D)
Montesano	(T)
	(T)

Group IV
(100,001 to Unlimited Access Lines)

Ames Lake	Gig Harbor	Snoqualmie Pass
Arletta	Lakebay	South Prairie
Carnation	Medical Lake	Spangle
Cheney	North Bend	Vashon
Fall City	Orting	
Fox Island	Reardan	

BASIC EXCHANGE SERVICE

EXTENDED AREA SERVICE

1. Extended Area Service, herein termed as EAS, is provided by means of special EAS trunks between the subscribers home exchange to other exchanges for the purpose of extending the local calling areas of such exchanges.
2. Exchanges with Extended Area Service are placed into rate groups on the basis of the effective combination of the home exchange and EAS exchange's local calling area.

EXTENDED AREA SERVICE EXCHANGES

HOME EXCHANGE

EAS COMMUNITY

Arletta

Bremerton
Gig Harbor
Fox Island
Lakebay
Port Orchard
Tacoma

Ames Lake

Carnation
Fall City
North Bend
Bellevue
Bothell
Duval
Kirkland-Redmond
Mercer Island
Seattle

Basin City

Mesa
Connell
Eltopia
Kahlotus
Mathews Corner

(D)

(D)

BASIC EXCHANGE SERVICE

EXTENDED AREA SERVICE (Continued)

EXTENDED AREA SERVICE EXCHANGES

HOME EXCHANGE

EAS COMMUNITY

Carnation

Ames Lake
Bellevue
Duval
Fall City
Issaquah
Kirkland-Redmond
North Bend
Snoqualmie Pass

Cheney

Edwall/Tyler
Spangle
Spokane
Sprague

Chewelah

Colville
Hunters
Kettle Falls

(D)

(D)

Clearwater

Forks

(D)

(D)

Connell

Basin City
Kahlotus
Mathews Corner
Mesa
Eltopia

Creston

Almira
Wilbur
Coulee City

BASIC EXCHANGE SERVICE

EXTENDED AREA SERVICE (Continued)

EXTENDED AREA SERVICE EXCHANGES

HOME EXCHANGE

EAS COMMUNITY

Davenport

Harrington

(D)
|
(D)

Elma

Montesano
McCleary

Eltopia

Basin City
Connell
Kahlotus
Mathews Corner
Mesa
Pasco

Fall City

Bellevue
Carnation
Issaquah
Kirkland-Redmond
North Bend
Snoqualmie Pass

Forks

Clearwater

(D)
|
(D)

Fox Island

Arletta
Bremerton
Gig Harbor
Lakebay
Port Orchard
Tacoma

(D)
|
(D)

BASIC EXCHANGE SERVICE

EXTENDED AREA SERVICE (Continued)

EXTENDED AREA SERVICE EXCHANGES

HOME EXCHANGE

EAS COMMUNITY

Glenoma

Mineral
Morton
Packwood
Randle

Gig Harbor

Arletta
Bremerton
Fox Island
Lakebay
Port Orchard
Tacoma

(D)
|
(D)

Hunters

Chewelah
Colville
Kettle Falls

Kahlotus

Basin City
Connell
Eltopia
Mathews Corner
Mesa

Kettle Falls

Colville
Chewelah
Hunters

Kingston

Poulsbo
Silverdale
Suquamish

(D)

Lakebay

Arletta
Bremerton
Fox Island
Gig Harbor
Port Orchard
Tacoma

BASIC EXCHANGE SERVICE

EXTENDED AREA SERVICE (Continued)

EXTENDED AREA SERVICE EXCHANGES

HOME EXCHANGE

EAS COMMUNITY

Long Beach

None**

(C)
 (D)
 |
 (D)

Mathews Corners

Basin City
 Connell
 Eltopia
 Kahlotus
 Mesa
 Pasco

Medical Lake

Spokane
 Edwall-Tyler

Mesa

Basin City
 Connell
 Eltopia
 Kahlotus
 Mathews Corner

McCleary

Elma
 Montesano

Mineral

Glenoma
 Morton
 Packwood
 Randle

Montesano

Elma
 Aberdeen
 Hoquiam
 McCleary

Morton

Glenoma
 Mineral
 Packwood
 Randle

****Long Beach includes former EAS exchanges Chinook and Ocean Park.**

(N)

BASIC EXCHANGE SERVICE

EXTENDED AREA SERVICE (Continued)

EXTENDED AREA SERVICE EXCHANGES

HOME EXCHANGE

EAS COMMUNITY

North Bend

Ames Lake
 Bellevue
 Carnation
 Fall City
 Issaquah
 Kirkland-Redmond
 Snoqualmie Pass

(D)
 |
 (D)

Orting

Buckley
 Enumclaw
 Graham
 Puyallup
 South Prairie
 Sumner
 Tacoma

(D)
 (D)

Packwood

Glenoma
 Mineral
 Morton
 Randle

Randle

Glenoma
 Mineral
 Morton
 Packwood

Reardan

Spokane

San Juan

None**

(N)

Snoqualmie Pass

Bellevue
 Carnation
 Fall City
 Issaquah

**** San Juan consists of former EAS exchanges Blakely, East Sound, Friday Harbor and Lopez.**

(N)
 (N)

FOREIGN EXCHANGE SERVICE

(Except Clearwater and Forks exchanges)

(C)

RATES

Rates specified herein apply in the Company serving areas for foreign exchange service between exchanges of the Company and other companies.

Where EAS is provided, Foreign Exchange service will be limited to existing customers only.

The monthly rate for each foreign exchange business and residence one-party exchange access line will be determined as specified herein.

I. Contiguous Exchanges - Rates for contiguous foreign exchange service will be determined in accordance with either Plan A or Plan B as specified below. The rate is determined under each plan and the customer will be billed the lesser rate of the two plans.

A. Plan A, the monthly rate for each foreign exchange central office access line will be the sum of items 1, 2 and 3.

1. The monthly rate of the serving exchange for the class and grade of access line service provided, plus the appropriate suburban or off-premises mileage rate of the serving exchange where applicable.

	<u>Rate Per Month</u>
2. Local exchange charge	
a. Business 1-party	\$ 15.00
b. Residence 1-party	10.00
c. Residence 2-party*	7.50
d. Residence suburban*	5.00
e. Off-premises extension	10.00

* Applicable to existing services only. No new services will be furnished nor will supersede existing services be allowed.

3. Foreign exchange mileage.
The airline distance from the customer's station location to the nearest point on the common boundary of the local and serving exchanges

	<u>Rate Per Month</u> <u>Per 1/4 Mile</u>
a. Business or residence 1-party access line or off-premises extension	\$ 2.50
b. Two-party residence *	1.50
c. Residence suburban access line. *	1.00

* Applicable to existing services only. No new services will be furnished nor will supersede existing services be allowed except Paradise Estates.

**Non-recurring charge, per each foreign exchange service ordered in Paradise Estates will be waived.

4. Non-recurring charge, per each foreign exchange service.**	\$ 180.00
---	-----------

FOREIGN EXCHANGE SERVICE

(Except Clearwater and Forks exchanges)

(C)

RATES (Continued)

B.	Plan B, the monthly rate for each foreign exchange business and residence one-party exchange access line will be the sum of items 1 and 2.	
1.	The monthly rate of the serving (foreign) exchange for the class and grade of service provided.	
2.	Foreign Exchange Channel For business or residence service between contiguous exchanges	
		<u>Rate Per Month</u>
a.	Interexchange channel, between rate centers of the local and foreign exchanges, per airline mile	\$ 2.75
b.	Interexchange channel terminal, applies at the rate center of the local and the foreign exchange Each	10.25
a.	Service area function, applies in the local exchange at each customer location Each	2.00
		<u>Non-recurring Charge</u>
3.	Non-Recurring Charge Service connection, rearrangement or change of each foreign exchange channel	\$180.00

FOREIGN EXCHANGE SERVICE

(Except Clearwater and Forks exchanges)

(C)

RATES (Continued)

II. Non-Contiguous Exchanges

A. The monthly rate for each foreign exchange access line, will be the sum of items 1, 2, 3, 4 and 5, where applicable.

1. The monthly rate of the serving exchange for the class and grade of access line service provided.

2. Local charges Rate Per Month

a. Interexchange channel terminal – each exchange \$ 24.50

b. Service function - each location 2.00

3. Interexchange mileage - The airline distance between the rate centers of the local and serving exchange, per mile, each \$ 4.00

4. Suburban mileage, if applicable - The airline distance from the customer's station location to the nearest point on the local exchange base rate area boundary, per 1/4 mile, each facility. \$ 1.00

5. Interoffice mileage, where applicable, per route mile or fraction thereof between central offices within the same company exchange. 7.20

6. Non-recurring charge Non-recurring charge
Service connection, rearrangement or change of each foreign exchange facility. \$180.00

FOREIGN EXCHANGE SERVICE

(Except Clearwater and Forks exchanges)

(C)

CONDITIONS

1. Foreign exchange service is service furnished from an exchange other than the one from which it would normally be furnished. The local exchange (local company) is the exchange in which the subscriber is located. The foreign exchange (serving company) is the exchange from which service is furnished.
2. Foreign Exchange Service is furnished from the central office in the Foreign Exchange to the subscriber's premises in the Local Exchange in connection with:
 - a. Residence one-party flat rate exchange access lines; or
 - b. Business one-party flat rate access lines
3. The monthly rate for business or residence exchange access lines are those of the foreign exchange for the class of service provided. For Company exchanges, see Preface.
4. In addition to the initial nonrecurring charge, I.A.4, I.B.3 and II.A.6 preceding, the service connection, move or change charges of the local exchange also apply. For non-recurring charges see Schedule 4.
5. The nonrecurring charges will apply for connection of service, rearrangements or change of the Foreign Exchange Channel. Move of a customer's location in the local exchange within the same serving central office is considered a change in the Foreign Exchange Service.
6. The rates for interexchange channel mileage, interexchange channel terminal and service function apply to all classes of service.
7. Interexchange mileage is the airline distance between rate centers as calculated for private line service, WN U-31, of U S WEST. Only applicable to non-contiguous and Plan B.
8. When a foreign exchange channel is furnished jointly by the Company and another company, the Company's interexchange channel rates apply to the portion of the rate center to rate center miles, in full miles, provided by the Company. The portion of the circuit provided by the connecting company is provided at their prevailing rates.
9. Interexchange channel terminal rates I.B. preceding apply at rate center of the Company only.
10. Service function rate I.B. preceding applies at a Company local exchange only
11. The rates for foreign paid directory listings in the local exchange directory and other supplemental services will be those of the local exchange.

FOREIGN EXCHANGE SERVICE

(Except Clearwater and Forks exchanges)

(C)

CONDITIONS (Continued)

12. Business foreign exchange service will be furnished for the exclusive use of the subscriber and his employees in the conduct of the subscriber's business. Residence foreign exchange service will be furnished for the use of the subscriber and members of his household only.
13. Suburban mileage rates apply, where appropriate, for the class of service furnished if the subscriber's location is outside the base rate area of a Company local exchange.
14. Long distance message toll over foreign exchange channels will be charged for at the rates in effect for the class of call from the foreign exchange.
15. Foreign exchange service will be listed in the directory of the foreign exchange. Listings in the local exchange directory, additional listings, joint user or additional lines of information will be furnished at the rates in effect for the directory containing such listings.
16. Foreign exchange service over any route is available under the conditions, rates and charges specified in this schedule, only when facilities and operating conditions permit.

Where unusual costs are involved to provide foreign exchange service, additional charges based on costs of providing service may apply.
17. Where foreign exchange service is provided in a contiguous exchange by means of a channel directly from the foreign exchange central office to the subscriber's premises, the following provisions apply.
 - a. Extensions of plant required in a Company local or foreign exchange will be provided as specified in Schedule 13.
18. A Foreign Exchange Channel may be utilized with customer-provided terminal equipment, protective circuitry which are connected to the exchange telephone service associated with such channels, subject to the provision of Schedule 19 of this tariff.
19. Party-line foreign exchange service is available only to a subscriber having this service, at a location where such service was established prior to the effective date of this tariff and no supersedure of such service is permitted.
20. Joint user service will not be established in connection with foreign exchange service.
21. Foreign exchange payphone coin station service will not be furnished with foreign exchange service.
22. Non-recurring charges are waived for those subscribers to foreign exchange service who place an order for local exchange service in lieu of the foreign exchange service within sixty (60) days after the effective date of this Tariff.

FOREIGN EXCHANGE SERVICE

(Except Clearwater and Forks exchanges)

(C)

CONDITIONS (Continued)

23. Within sixty (60) days after the effective date of this Tariff, if the Company cannot provide local service to existing customers when requested or to new subscribers, temporary local service will be provided if facilities and operating conditions permit from a contiguous foreign exchange at the rates and charges of the servicing exchange. If applicable, tariffed Line Extension and mileage charges, as specified in Schedule 13 of this Tariff, may also apply.
24. When facilities become available to provide local service, and the subscriber elects to retain the temporary local service, the rules, regulations, and monthly rates for the foreign exchange service will apply.
25. Definitions applicable to foreign exchange service.

Another Company

A telephone company other than CenturyTel of Washington, Inc. d/b/a CenturyLink.

Company

CENTURYTEL OF WASHINGTON, INC.

Extended Area Service (EAS)

Telephone service that allows customers in one exchange area local calling access to other exchanges without applying long distance charges.

Foreign Exchange

The exchange from which the service is furnished (serving exchange).

Interexchange Channel

Channel between the rate centers of the foreign and local exchanges.

Interexchange Channel Terminal

Termination of an interexchange channel at a rate center.

Local Exchange

Exchange in which the customer's primary telephone station is located.

Service Function

Electronic apparatus required to meet system standards when service is furnished from an exchange other than the normal exchange. Suburban Mileage Air line mileage from the customer's premises located outside the base rate area of a Company Local Exchange to the nearest point on the base rate boundary of that exchange.

Temporary Local Service

Local exchange rated service provided from a contiguous exchange when local exchange service is not available.

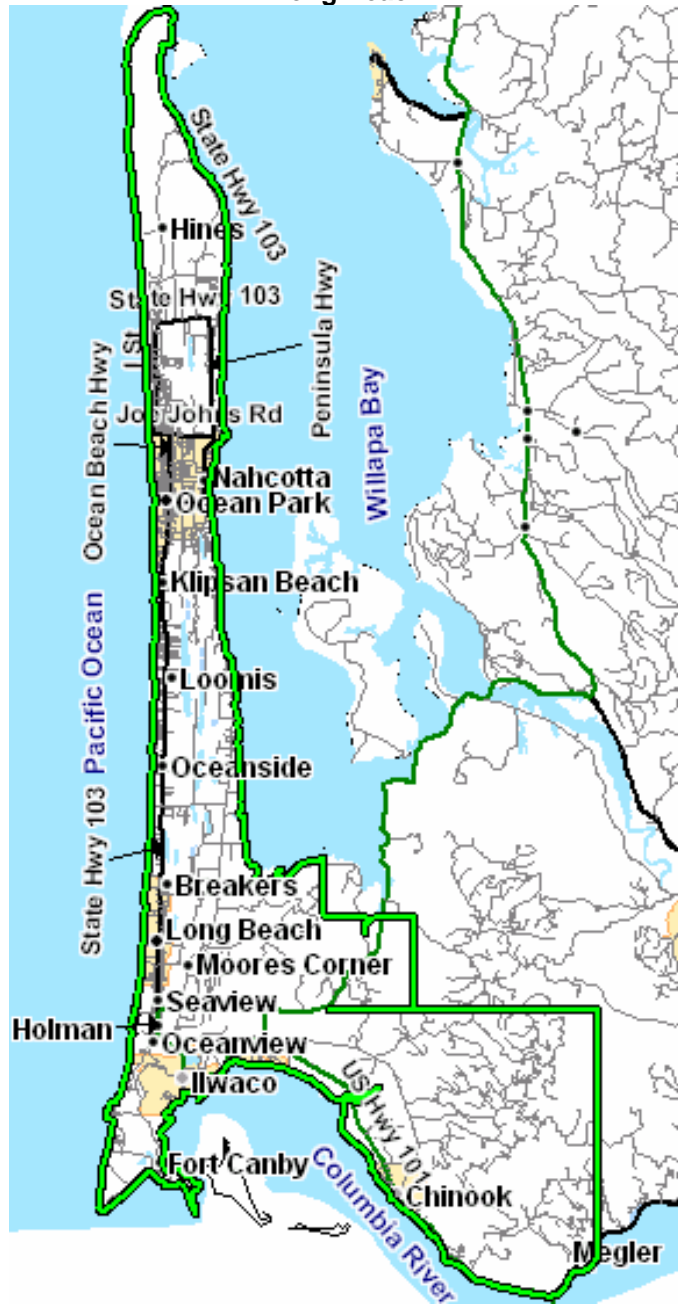
EXCHANGE MAPS - INDEX

<u>Exchange</u>	<u>Map Number</u>	
Arletta	M 3	(D)
Ames Lake	M33	
Basin City	M 8	(D)
Reserved for Future Use	M34	(C)
Carnation	M32	
Cheney	M23	
Chewelah	M30	
Reserved For Future Use	M35	(D)
Clearwater	M36	(C)
Connell	M 6	
Creston	M28	
Davenport	M27	
Elma	M17	
Eltopia	M 9	
Fall City	M32	
Forks	M37	
Fox Island	M 3	
Glenoma	M 4	
Gig Harbor	M 3	
Hunters	M29	(D)
Kahlotus	M11	
Kettle Falls .	M31	
Kingston	M19	
Lakebay	M15	
Long Beach	M 2	
Mathews Corner	M10	
McCleary	M16	
Medical Lake	M26	
Mesa	M 7	
Mineral	M 4	
Montesano	M18	
Morton	M4	
Reserved For Future Use	M38	(C)
North Bend	M32	
Orting	M 5	(D)
Packwood	M 4	
Puget Island (Cathlamet)	M14	

EXCHANGE MAPS - INDEX

<u>Exchange</u>	<u>Map Number</u>	
Randle	M 4	
Reardan	M25	
San Juan (formerly Blakely, East Sound, Friday Harbor, Lopez)	M38.1	(N)
Snoqualmie Pass	M32	
South Prairie	M 5	
Spangle	M24	
Twisp	M20	
Vashon	M22	
Washtucna	M12	
Winthrop	M21	
Reserved for Future Use	M39	(C)
Reserved for Future Use	M40	
Reserved for Future Use	M41	
Reserved for Future Use	M42	(C)

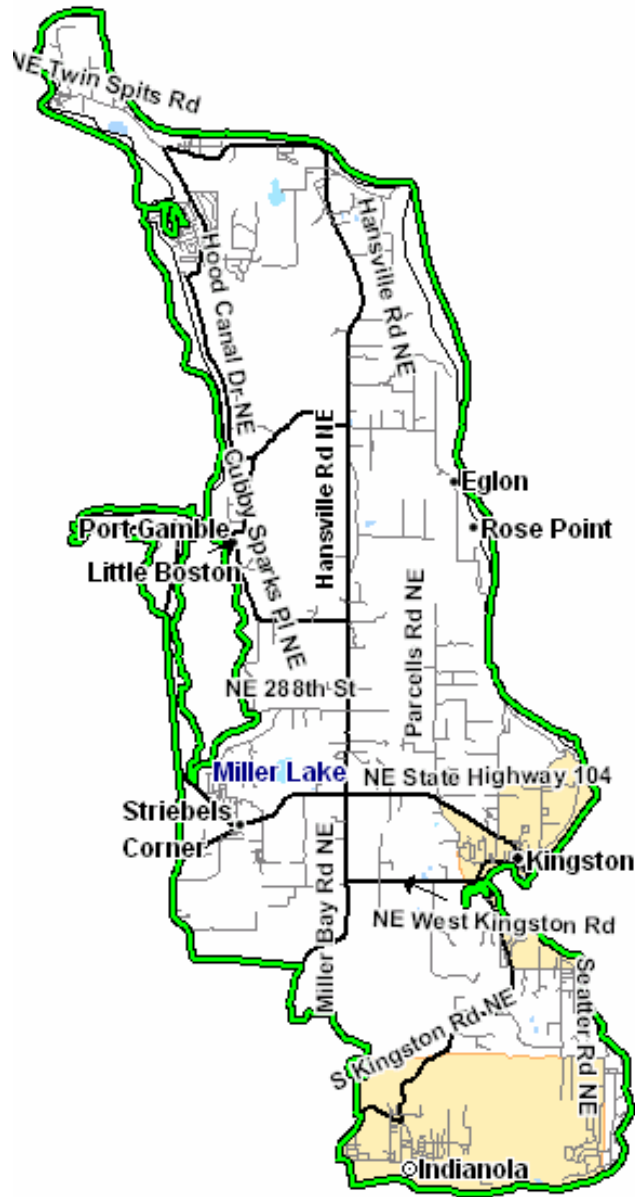
EXCHANGE MAPS
Long Beach



(C)

(C)

EXCHANGE MAPS
Kingston



(C)

(C)

EXCHANGE MAPS
Reserved For Future Use

(C)
(D)

(D)

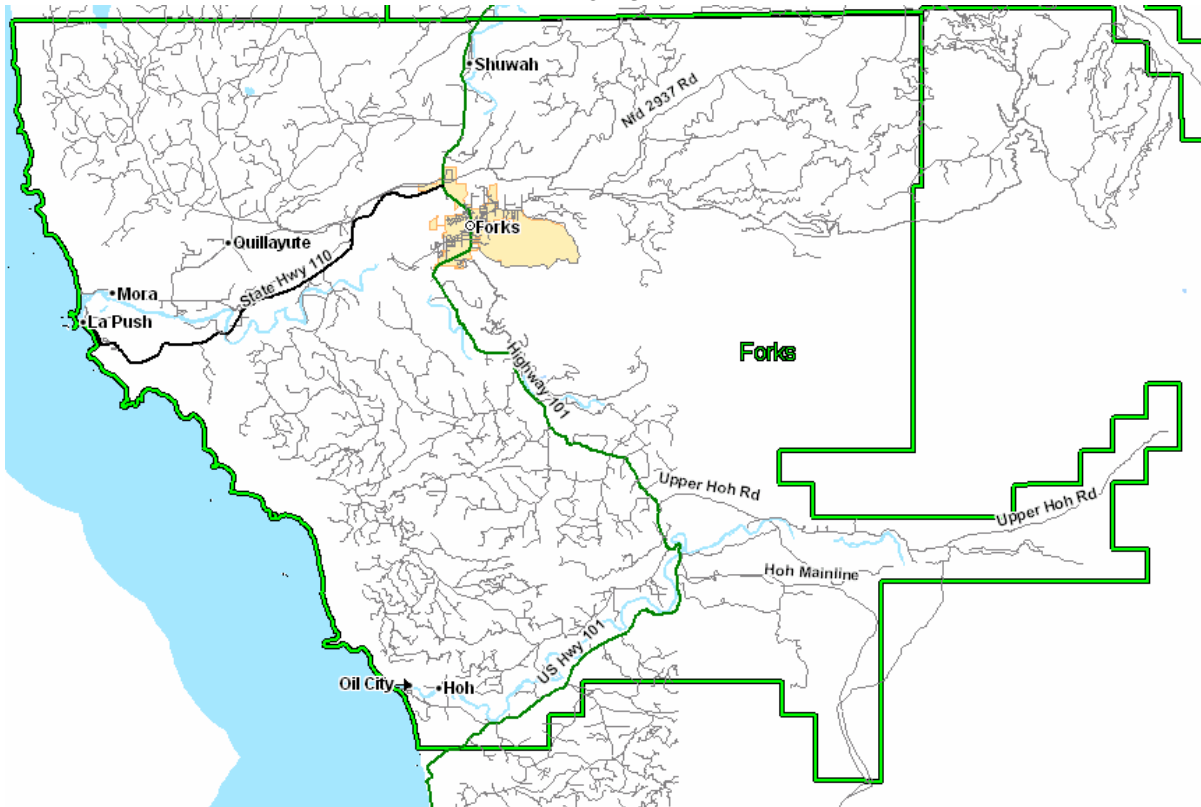
EXCHANGE MAPS
Reserved For Future Use

(C)
(D)

(D)

EXCHANGE MAPS

Forks



(C)

(C)

EXCHANGE MAPS
Reserved For Future Use

(C)
(D)

(D)

EXCHANGE MAPS
San Juan



EXCHANGE MAPS
Reserved For Future Use

(C)
(D)

(D)

EXCHANGE MAPS
Reserved For Future Use

(C)
(D)

(D)

EXCHANGE MAPS
Reserved For Future Use

(C)
(D)

(D)

WN U-2
CenturyTel of Washington, Inc.

First Revised Sheet No.M42
Cancels Original Sheet No. M42

EXCHANGE MAPS
Reserved For Future Use

(C)
(D)

(D)