

STRAIT OF JUAN DE FUCA - WEST 18465 #1

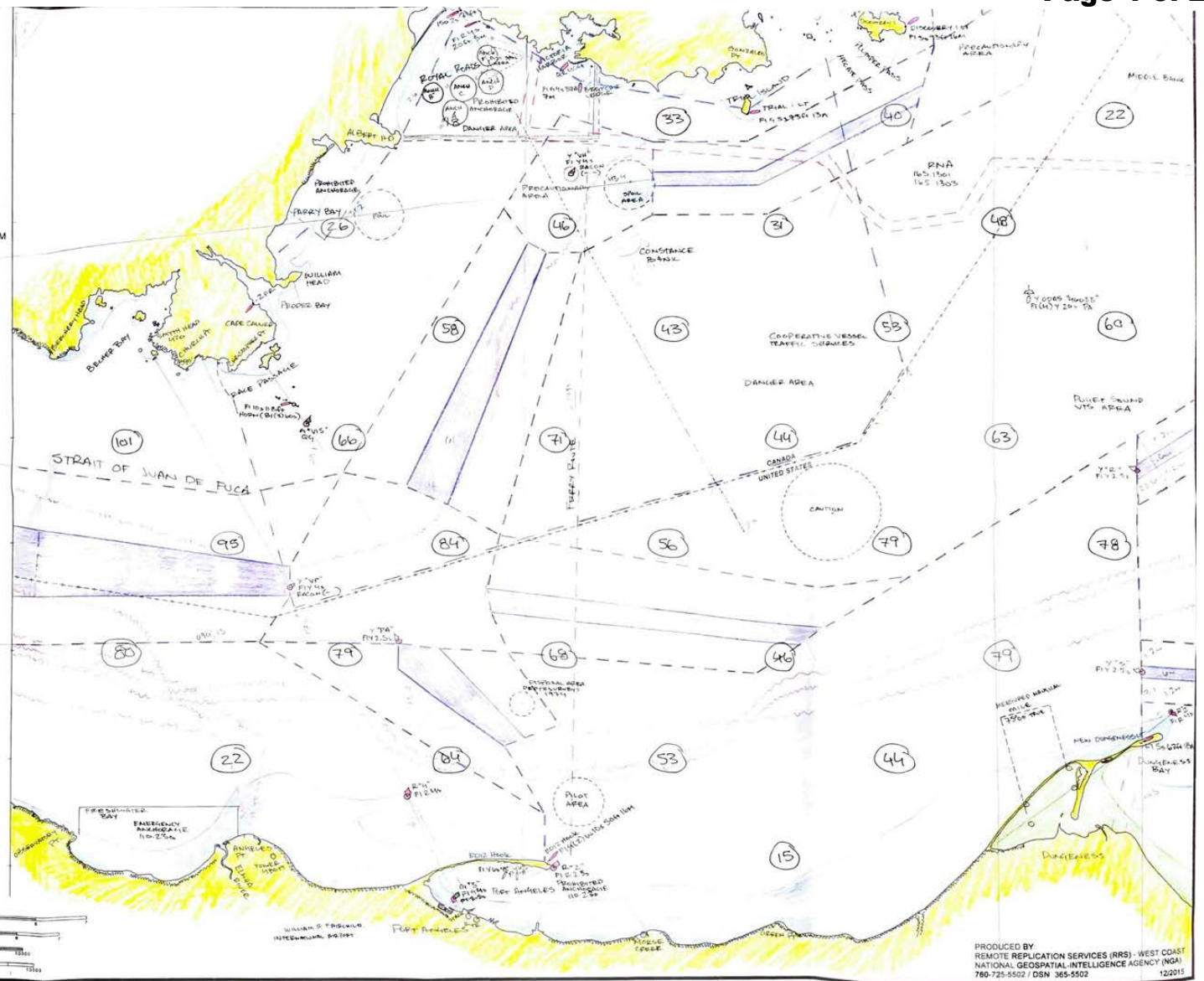
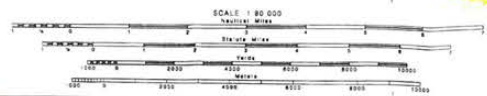
PUGET SOUND REGIONAL EXAMINATION CENTER
PILOTAGE EXAMINATION
INSTRUCTIONS FOR CHART SKETCHES

CHART SKETCHES MUST BE COMPLETED IN ONE SETTING. MAXIMUM ALLOWABLE TIME IS AS PER SESSION TIME SCHEDULE. SESSIONS FROM 0800 TO 1130 AND DURING THE AFTERNOON FROM 1230 TO 1600

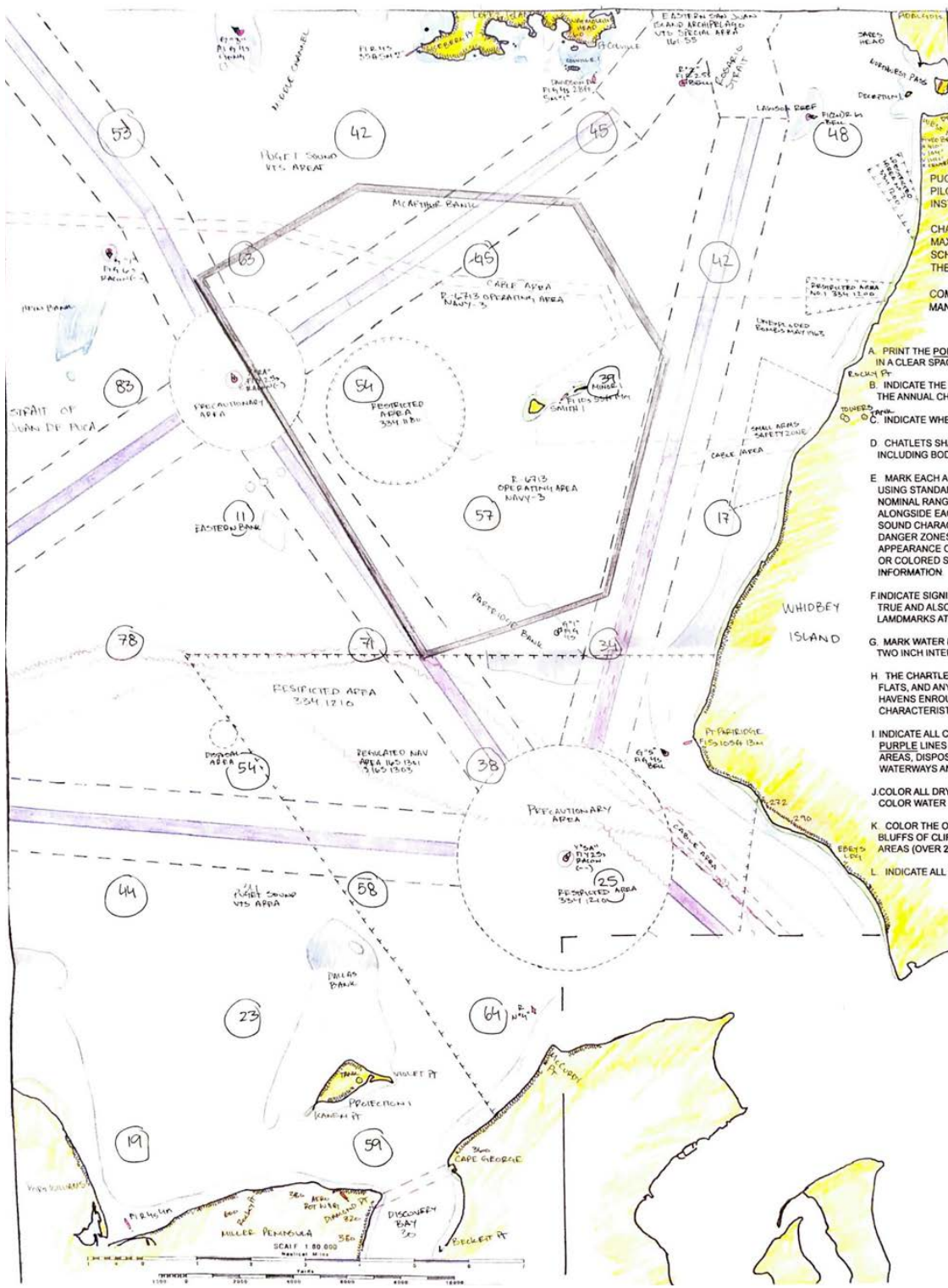
COMPLETE THE BLANK CHARTLET IN THE FOLLOWING MANNER:

- A. PRINT THE PORT, DATE, REFERENCE #, AND YOUR NAME IN A CLEAR SPACE NEAR THE CHART LEGEND.
- B. INDICATE THE MAGNETIC VARIATION, THE YEAR COMPUTED, AND THE ANNUAL CHANGE, ALSO TRUE AND MAGNETIC NORTH.
- C. INDICATE WHETHER SOUNDINGS ARE IN FEET OR FATHOMS.
- D. CHARTLETS SHALL SHOW THE NAMES OF GEOGRAPHIC FEATURES INCLUDING BODIES OF WATER.
- E. MARK EACH AID TO NAVIGATION IN ITS PRESENT CHARTED LOCATION USING STANDARD CHART SYMBOLS (PRIVATE AID 'LIGHTS' WITH NOMINAL RANGES OF LESS THAN 3 MILES MAY BE OMITTED). ALONGSIDE EACH AID SHOW ITS NAME, LIGHT CHARACTERISTICS (AND SOUND CHARACTERISTICS, IF APPLICABLE). MARK ANY OBSCURE OR DANGER ZONES WITH SOLID RED LINES. HEIGHT ABOVE WATER, APPEARANCE OF DAYMARK, TRUE BEARINGS OF RANGES, OBSCURED OR COLORED SECTORS, DEPTH OF WATER AND OTHER PERTINENT INFORMATION.
- F. INDICATE SIGNIFICANT, PRUDENT COURSES AND REACHES IN DEGREES TRUE AND ALSO INDICATE DISTANCES AND BEARINGS TO AIDS OR LANDMARKS AT COURSE CHANGE POSITION.
- G. MARK WATER DEPTHS ALONG YOUR TRACKLINE AND AT APPROXIMATELY TWO INCH INTERVALS OVER THE ENTIRE AREA OF THE CHARTLET.
- H. THE CHARTLET SHALL SHOW SHOALS, PROMINENT LANDMARKS, MUD FLATS, AND ANY OTHER NAVIGATIONAL HAZARDS AS WELL AS POSSIBLE HAVING ENROUTE AND GOOD ANCHORAGES ALONG WITH BOTTOM CHARACTERISTICS.
- I. INDICATE ALL CABLE AREAS AND VESSEL TRAFFIC LANES IN BROKEN PURPLE LINES AND SHOW GENERAL ANCHORAGE AREAS, RESTRICTED AREAS, DISPOSAL AREAS IN BLACK LINES. INDICATE ALL BRIDGES OVER WATERWAYS AND GIVE THEIR APPROPRIATE CLEARANCE.
- J. COLOR ALL DRYING SANDS EXPOSED AT MLW IN LIGHT GREEN AND COLOR WATER DEPTHS OF LESS THAN 10 FATHOMS IN LIGHT BLUE.
- K. COLOR THE OUTLINE OF THE SHORES IN YELLOW. MARK PROMINENT BLUFFS OF CLIFFS WITH BLACK HATCHINGS. INDICATE ALL HIGH LAND AREAS (OVER 250') IN LIGHT BROWN OR GRAY.
- L. INDICATE ALL ESTABLISHED FERRY CROSSINGS BY GREEN LINES.

SOUNDINGS IN FATHOMS



**Strait Of Juan De Fuca
 East New Dungeness
 Point Wilson
 18465 - 18441 - 18421
 Chartlet #2**



PUGET SOUND REGIONAL EXAMINATION CENTER
 PILOTAGE SOUND EXAMINATION
 INSTRUCTIONS FOR CHART SKETCHES

CHART SKETCHES MUST BE COMPLETED IN ONE SETTING
 MAXIMUM ALLOWABLE TIME IS AS PER SESSION TIME
 SCHEDULE. SESSIONS FROM 0800 TO 1130 AND DURING
 THE AFTERNOON FROM 1230 TO 1600.

COMPLETE THE BLANK CHARTLET IN THE FOLLOWING
 MANNER:

- A. PRINT THE PORT, DATE, REFERENCE #, AND YOUR NAME
 IN A CLEAR SPACE NEAR THE CHART LEGEND
- B. INDICATE THE MAGNETIC VARIATION, THE YEAR COMPUTED, AND
 THE ANNUAL CHANGE, ALSO TRUE AND MAGNETIC NORTH.
- C. INDICATE WHETHER SOUNDINGS ARE IN FEET OR FATHOMS
- D. CHARTLETS SHALL SHOW THE NAMES OF GEOGRAPHIC FEATURES
 INCLUDING BODIES OF WATER
- E. MARK EACH AID TO NAVIGATION IN ITS PRESENT CHARTED LOCATION
 USING STANDARD CHART SYMBOLS (PRIVATE AID 'LIGHTS' WITH
 NOMINAL RANGES OF LESS THEN 3 MILES MAY BE OMITTED)
 ALONGSIDE EACH AID SHOW ITS NAME, LIGHT CHARACTERISTICS (AND
 SOUND CHARACTERISTICS, IF APPLICABLE) MARK ANY OBSCURE OR
 DANGER ZONES WITH SOLID RED LINES. HEIGHT ABOVE WATER,
 APPEARANCE OF DAYMARK, TRUE BEARINGS OF RANGES, OBSCURED
 OR COLORED SECTORS, DEPTH OF WATER AND OTHER PERTINENT
 INFORMATION
- F. INDICATE SIGNIFICANT, PRUDENT COURSES AND REACHES IN DEGREES
 TRUE AND ALSO INDICATE DISTANCES AND BEARINGS TO AIDS OR
 LANDMARKS AT COURSE CHANGE POSITION
- G. MARK WATER DEPTHS ALONG YOUR TRACKLINE AND AT APPROXIMATELY
 TWO INCH INTERVALS OVER THE ENTIRE AREA OF THE CHARTLET
- H. THE CHARTLET SHALL SHOW SHOALS, PROMINENT LANDMARKS, MUD
 FLATS, AND ANY OTHER NAVIGATIONAL HAZARDS AS WELL AS POSSIBLE
 HAVENS ENROUTE AND GOOD ANCHORAGES ALONG WITH BOTTOM
 CHARACTERISTICS
- I. INDICATE ALL CABLE AREAS AND VESSEL TRAFFIC LANES IN BROKEN
 PURPLE LINES AND SHOW GENERAL ANCHORAGE AREAS, RESTRICTED
 AREAS, DISPOSAL AREAS IN BLACK LINES. INDICATE ALL BRIDGES OVER
 WATERWAYS AND GIVE THEIR APPROPRIATE CLEARANCE
- J. COLOR ALL DRYING SANDS EXPOSED AT MLW IN LIGHT GREEN AND
 COLOR WATER DEPTHS OF LESS THAN 10 FATHOMS IN LIGHT BLUE
- K. COLOR THE OUTLINE OF THE SHORES IN YELLOW. MARK PROMINENT
 BLUFFS OF CLIFFS WITH BLACK HATCHINGS. INDICATE ALL HIGH LAND
 AREAS (OVER 250') IN LIGHT BROWN OR GRAY
- L. INDICATE ALL ESTABLISHED FERRY CROSSINGS BY GREEN LINES

↑
 MAGNETIC VARIATION
 VARIATION 16' 15" (2015)
 ANNUAL DECREASE 9'

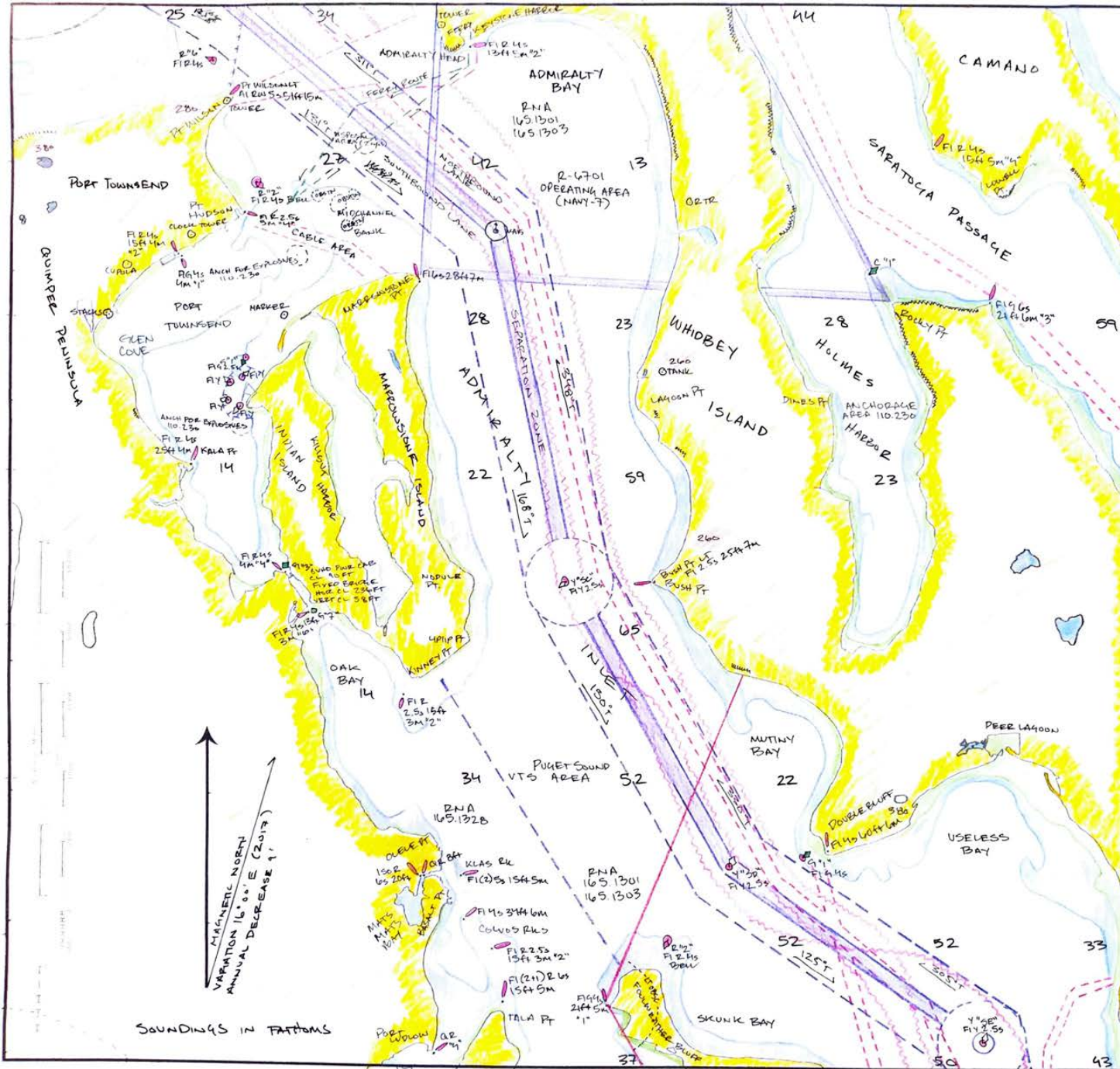
SOUNDINGS IN FATHOMS

ADMIRALTY INI

Chart #18441
Chartlet #3

PUGET SOUND REGIONAL EXAMINATIVE
PILOTAGE EXAMINATION
INSTRUCTIONS FOR CHART SKETCH

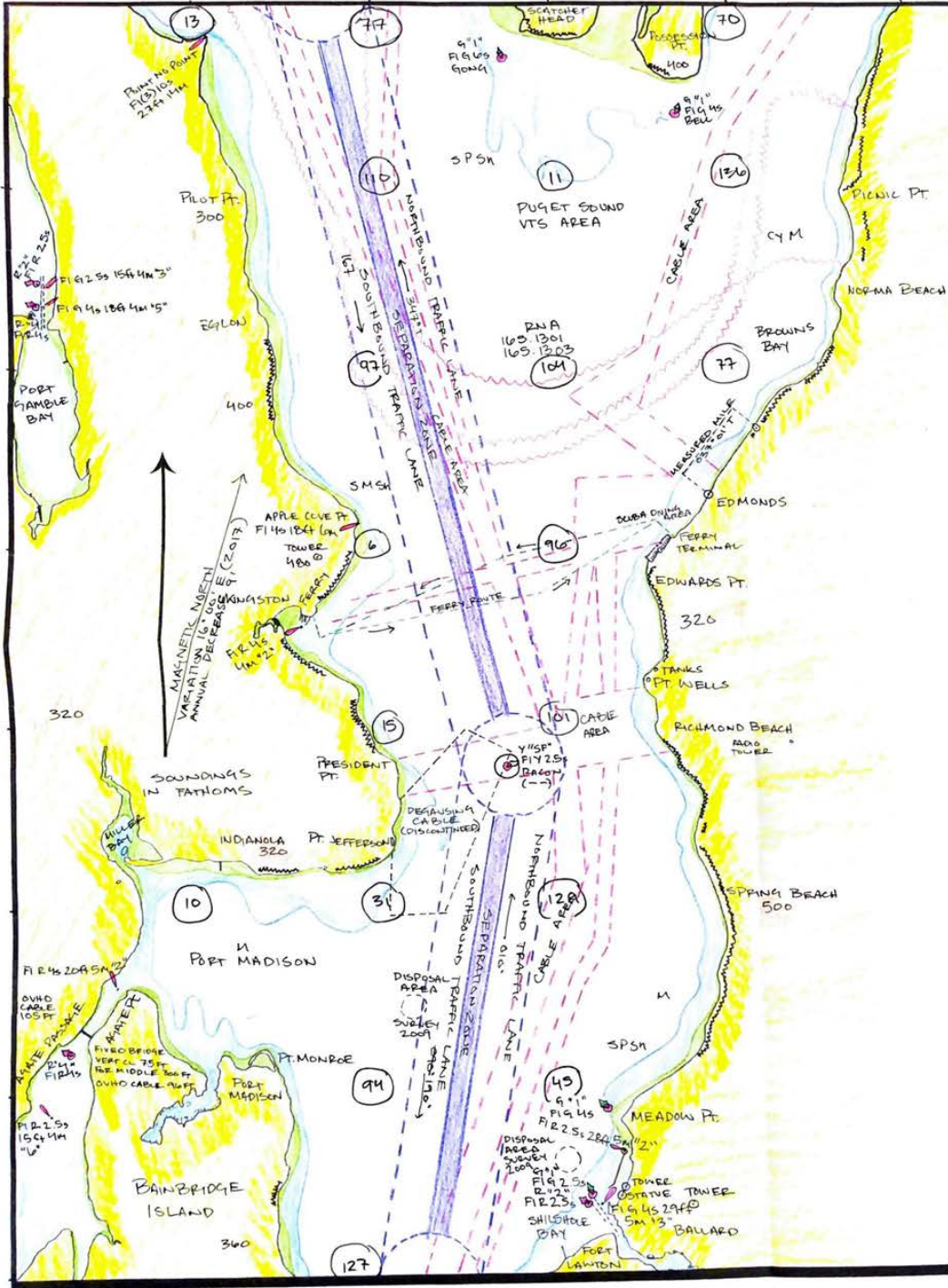
CHART SKETCHES MUST BE COMPLETED IN ONE
ALLOWABLE TIME IS AS PER SESSION TIME SCHED
0800 TO 1130 AND DURING THE AFTERNOON FI
COMPLETE THE BLANK CHARTLET IN THE FOL



- A. PRINT THE PORT, DATE, REFERENCE #, AND YOU IN A CLEAR SPACE NEAR THE CHART LEGEND.
- B. INDICATE THE MAGNETIC VARIATION, THE YEAR OF THE ANNUAL CHANGE, ALSO TRUE AND MAGNETIC
- C. INDICATE WHETHER SOUNDINGS ARE IN FEET OR FATHOMS
- D. CHARTLETS SHALL SHOW THE NAMES OF GEOGRAPHICAL BODIES OF WATER.
- E. MARK EACH AID TO NAVIGATION IN ITS PRESENT USING STANDARD CHART SYMBOLS (PRIVATE AID 11 NOMINAL RANGES OF LESS THEN 3 MILES MAY BE 1 ALONGSIDE EACH AID SHOW ITS NAME, LIGHT CHARACTERISTICS, IF APPLICABLE). MARK DANGER ZONES WITH SOLID RED LINES. HEIGHT, APPEARANCE OF DAYMARK, TRUE BEARINGS OF R OR COLORED SECTORS, DEPTH OF WATER AND OTHER INFORMATION.
- F. INDICATE SIGNIFICANT, PRUDENT COURSES AND ROUTES AND ALSO INDICATE DISTANCES AND BEARING LANDMARKS AT COURSE CHANGE POSITION.
- G. MARK WATER DEPTHS ALONG YOUR TRACKLINE AT TWO INCH INTERVALS OVER THE ENTIRE AREA OF THE CHARTLET.
- H. THE CHARTLET SHALL SHOW SHOALS, PROMINENT FLATS, AND ANY OTHER NAVIGATIONAL HAZARDS A HAVENS ENROUTE AND GOOD ANCHORAGES ALONG CHARACTERISTICS.
- I. INDICATE ALL CABLE AREAS AND VESSEL TRAFFIC LANE PURPLE LINES AND SHOW GENERAL ANCHORAGE AREAS, DISPOSAL AREAS IN BLACK LINES. INDICATE WATERWAYS AND GIVE THEIR APPROPRIATE CLEARANCE.
- J. COLOR ALL DRYING SANDS EXPOSED AT MLW IN LIGHT BROWN OR COLOR WATER DEPTHS OF LESS THAN 10 FATHOMS IN LIGHT BROWN OR GRAY.
- K. COLOR THE OUTLINE OF THE SHORES IN YELLOW BLUFFS OF CLIFFS WITH BLACK HATCHINGS. INDICATE AREAS (OVER 250') IN LIGHT BROWN OR GRAY.
- L. INDICATE ALL ESTABLISHED FERRY CROSSINGS BY

PRODUCED BY:
REMOTE REPLICATION SERVICES (RRS) - WE
NATIONAL GEOSPATIAL-INTELLIGENCE AGENCY
780-725-5502 / DSN: 365-5502

TREVOR BOZINA 2018



PUGET SOUND NORTH

Chart #18441 Chartlet #4

PUGET SOUND REGIONAL EXAMINATION CENTER
PILOTAGE EXAMINATION
INSTRUCTIONS FOR CHART SKETCHES

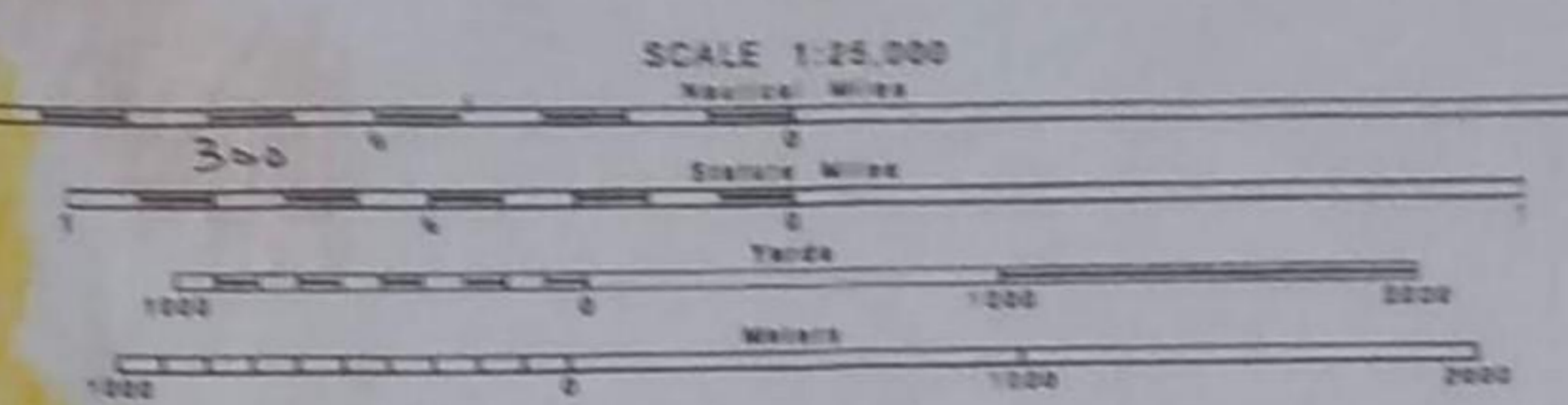
CHART SKETCHES MUST BE COMPLETED IN ONE SETTING. MAXIMUM ALLOWABLE TIME IS AS PER SESSION TIME SCHEDULE. SESSIONS FROM 0800 TO 1130 AND DURING THE AFTERNOON FROM 1230 TO 1500.

- COMPLETE THE BLANK CHARTLET IN THE FOLLOWING MANNER:
- A. PRINT THE PORT, DATE, REFERENCE #, AND YOUR NAME IN A CLEAR SPACE NEAR THE CHART LEGEND
 - B. INDICATE THE MAGNETIC VARIATION, THE YEAR COMPUTED, AND THE ANNUAL CHANGE, ALSO TRUE AND MAGNETIC NORTH
 - C. INDICATE WHETHER THE SOUNDINGS ARE IN FEET OR FATHOMS
 - D. CHARTLETS SHALL SHOW THE NAMES OF GEOGRAPHIC FEATURES INCLUDING BODIES OF WATER.
 - E. MARK EACH AID TO NAVIGATION IN ITS PRESENT CHARTED LOCATION USING STANDARD CHART SYMBOLS (PRIVATE AID "LIGHTS" WITH NOMINAL RANGES OF LESS THAN 3 MILES MAY BE OMITTED) ALONGSIDE EACH AID SHOW ITS NAME. LIGHT CHARACTERISTICS (AND SOUND CHARACTERISTICS, IF APPLICABLE). MARK ANY OBSCURE OR DANGER ZONES WITH SOLID RED LINES. HEIGHT ABOVE WATER, APPEARANCE OF DAYMARK, TRUE BEARINGS OF RANGES, OBSCURED OR COLORED SECTORS, DEPTH OF WATER AND OTHER PERTINENT INFORMATION.
 - F. INDICATE SIGNIFICANT PRUDENT COURSES AND REACHES IN DEGREES TRUE AND ALSO INDICATE DISTANCES AND BEARINGS TO AIDS OR LANDMARKS AT COURSE CHANGE POSITION
 - G. MARK WATER DEPTHS ALONG YOUR TRACKLINE AND AT APPROXIMATELY TWO INCH INTERVALS OVER THE ENTIRE AREA OF THE CHARTLET
 - H. THE CHARTLET SHALL SHOW SHOALS, PROMINENT LANDMARKS, MUD FLATS, AND ANY OTHER NAVIGATIONAL HAZARDS AS WELL AS POSSIBLE HAVENS ENROUTE AND GOOD ANCHORAGES ALONG WITH BOTTOM CHARACTERISTICS
 - I. INDICATE ALL CABLE AREAS AND VESSEL TRAFFIC LANES IN BROKEN PURPLE LINES AND SHOW GENERAL ANCHORAGE AREAS, RESTRICTED AREAS, DISPOSAL AREAS IN BLACK LINES. INDICATE ALL BRIDGES OVER WATERWAYS AND GIVE THEIR APPROPRIATE CLEARANCE.
 - J. COLOR ALL DRYING SANDS EXPOSED AT MLW IN LIGHT GREEN AND COLOR WATER DEPTHS OF LESS THAN 10 FATHOMS IN LIGHT BLUE
 - K. COLOR THE OUTLINE OF THE SHORES IN YELLOW. MARK PROMINENT BLUFFS OF CLIFFS WITH BLACK HATCHINGS. INDICATE ALL HIGH LAND AREAS (OVR R 250') IN LIGHT BROWN OR GRAY.
 - L. INDICATE ALL ESTABLISHED FERRY CROSSINGS BY GREEN LINES.



Central Puget Sound / West Point Alki Point / Seattle Terminal Port

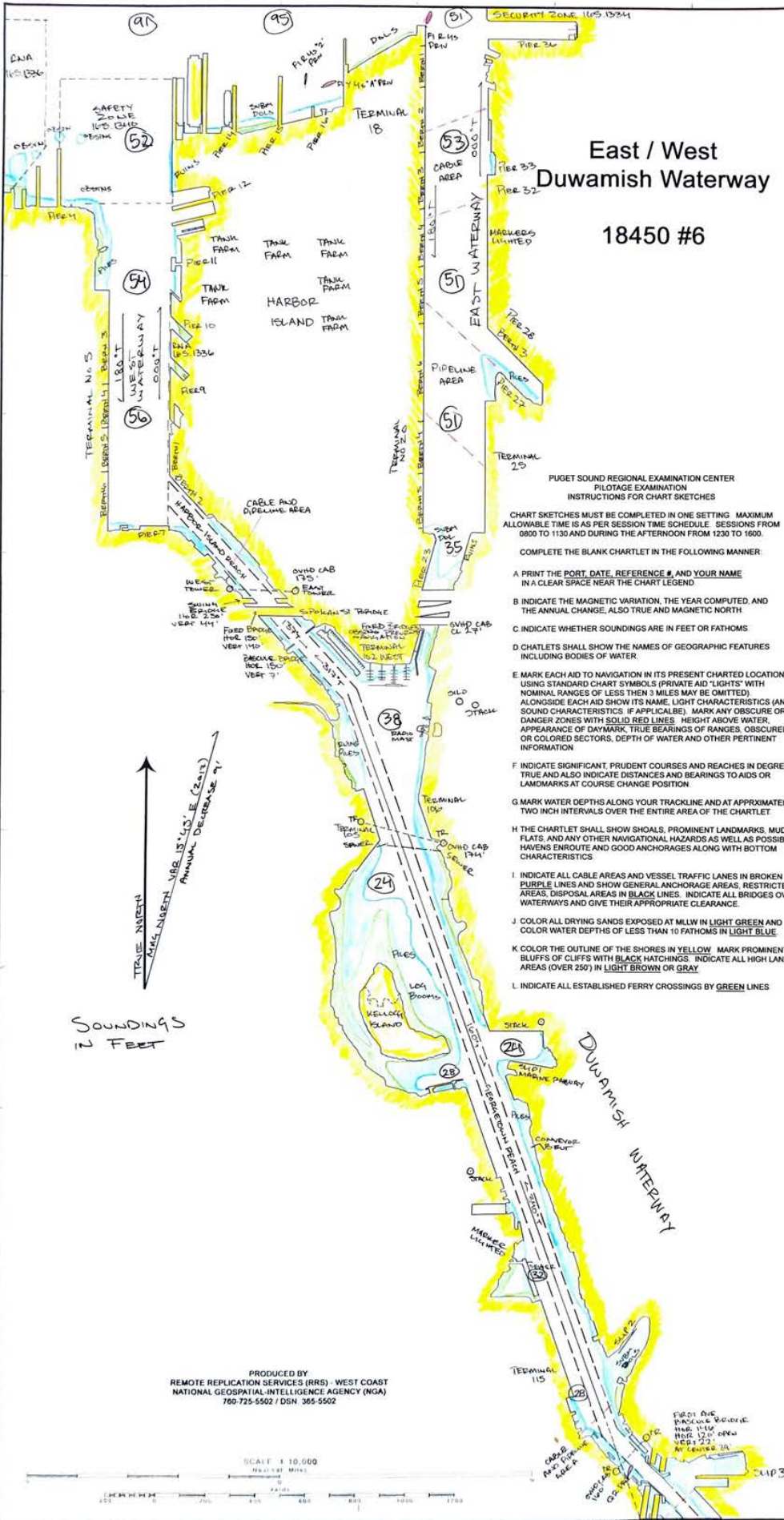
18449 #5



- PUGET SOUND REGIONAL EXAMINATION CENTER
PILOTAGE EXAMINATION
INSTRUCTIONS FOR CHART SKETCHES
- CHART SKETCHES MUST BE COMPLETED IN ONE SITTING. MAXIMUM ALLOWABLE TIME IS AS PER SESSION TIME SCHEDULE. SESSIONS FROM 0800 TO 1130 AND DURING THE AFTERNOON FROM 1230 TO 1800.
- COMPLETE THE BLANK CHARTLET IN THE FOLLOWING MANNER:
- PRINT THE PORT, DATE, REFERENCE, AND YOUR NAME IN A CLEAR SPACE NEAR THE CHART LEGEND.
 - INDICATE THE MAGNETIC VARIATION, THE YEAR COMPUTED, AND THE ANNUAL CHANGE. ALSO TRUE AND MAGNETIC NORTH.
 - INDICATE WHETHER SOUNDINGS ARE IN FEET OR FATHOMS.
 - CHARTLETS SHALL SHOW THE NAMES OF GEOGRAPHIC FEATURES INCLUDING BODIES OF WATER.
 - MARK EACH AID TO NAVIGATION IN ITS PRESENT CHARTED LOCATION USING STANDARD CHART SYMBOLS. PRIVATE AID "LIGHTS" WITH NOMINAL RANGES OF LESS THAN 3 MILES MAY BE OMITTED. ALONGSIDE EACH AID SHOW ITS NAME, LIGHT CHARACTERISTICS (AND SOUND CHARACTERISTICS, IF APPLICABLE). MARK ANY OBSCURE OR DANGER ZONES WITH SOLID RED LINES. HEIGHT ABOVE WATER, APPEARANCE OF DAYMARK, TRUE BEARINGS OF RANGES, OBSCURED OR COLORED SECTORS, DEPTH OF WATER AND OTHER PERTINENT INFORMATION.
 - INDICATE SIGNIFICANT PRUDENT COURSES AND REACHES IN DEGREES TRUE AND ALSO INDICATE DISTANCES AND BEARINGS TO AIDS OR LANDMARKS AT COURSE CHANGE POSITION.
 - MARK WATER DEPTHS ALONG YOUR TRACKLINE AND AT APPROXIMATELY TWO INCH INTERVALS OVER THE ENTIRE AREA OF THE CHARTLET.
 - THE CHARTLET SHALL SHOW SHOALS, PROMINENT LANDMARKS, MUD FLATS, AND ANY OTHER NAVIGATIONAL HAZARDS AS WELL AS POSSIBLE HAVENS ENROUTE AND GOOD ANCHORAGE ALONG WITH BOTTOM CHARACTERISTICS.
 - INDICATE ALL CABLE AREAS AND VESSEL TRAFFIC LINES IN BROWN PURPLE LINES AND SHOW GENERAL ANCHORAGE AREAS, RESTRICTED AREAS, DISPOSAL AREAS IN BLACK LINES. INDICATE ALL BRIDGES OVER WATERWAYS AND GIVE THEIR APPROPRIATE CLEARANCE.
 - COLOR ALL DRYING SANDS EXPOSED AT LOW IN LIGHT GREEN AND COLOR WATER DEPTHS OF LESS THAN 10 FATHOMS IN LIGHT BLUE.
 - COLOR THE OUTLINE OF THE SHORES IN YELLOW. MARK PROMINENT BLUFFS OF CLIFFS WITH BLACK HATCHING. INDICATE ALL HIGH LAND AREAS (OVER 250') IN LIGHT BROWN OR GRAY.
 - INDICATE ALL ESTABLISHED FERRY CROSSINGS BY GREEN LINES. SPACE 5/8" BEETWEEN.

East / West
Duwamish Waterway

18450 #6



PUGET SOUND REGIONAL EXAMINATION CENTER
PILOTAGE EXAMINATION
INSTRUCTIONS FOR CHART SKETCHES

CHART SKETCHES MUST BE COMPLETED IN ONE SETTING. MAXIMUM ALLOWABLE TIME IS AS PER SESSION TIME SCHEDULE. SESSIONS FROM 0800 TO 1130 AND DURING THE AFTERNOON FROM 1230 TO 1600.

COMPLETE THE BLANK CHARTLET IN THE FOLLOWING MANNER:

- A PRINT THE PORT, DATE, REFERENCE #, AND YOUR NAME IN A CLEAR SPACE NEAR THE CHART LEGEND.
- B INDICATE THE MAGNETIC VARIATION, THE YEAR COMPUTED, AND THE ANNUAL CHANGE, ALSO TRUE AND MAGNETIC NORTH.
- C INDICATE WHETHER SOUNDINGS ARE IN FEET OR FATHOMS.
- D CHARTLETS SHALL SHOW THE NAMES OF GEOGRAPHIC FEATURES INCLUDING BODIES OF WATER.
- E MARK EACH AID TO NAVIGATION IN ITS PRESENT CHARTED LOCATION USING STANDARD CHART SYMBOLS (PRIVATE AID "LIGHTS" WITH NOMINAL RANGES OF LESS THAN 3 MILES MAY BE OMITTED). ALONGSIDE EACH AID SHOW ITS NAME, LIGHT CHARACTERISTICS (AND SOUND CHARACTERISTICS IF APPLICABLE), MARK ANY OBSCURE OR DANGER ZONES WITH SOLID RED LINES. HEIGHT ABOVE WATER, APPEARANCE OF DAYMARK, TRUE BEARINGS OF RANGES, OBSCURE OR COLORED SECTORS, DEPTH OF WATER AND OTHER PERTINENT INFORMATION.
- F INDICATE SIGNIFICANT PRUDENT COURSES AND REACHES IN DEGREE, TRUE AND ALSO INDICATE DISTANCES AND BEARINGS TO AIDS OR LANDMARKS AT COURSE CHANGE POSITION.
- G MARK WATER DEPTHS ALONG YOUR TRACKLINE AND AT APPROXIMATELY TWO INCH INTERVALS OVER THE ENTIRE AREA OF THE CHARTLET.
- H THE CHARTLET SHALL SHOW SHOALS, PROMINENT LANDMARKS, MUD FLATS, AND ANY OTHER NAVIGATIONAL HAZARDS AS WELL AS POSSIBLE. HAVENS ENROUTE AND GOOD ANCHORAGES ALONG WITH BOTTOM CHARACTERISTICS.
- I INDICATE ALL CABLE AREAS AND VESSEL TRAFFIC LANES IN BROKEN PURPLE LINES AND SHOW GENERAL ANCHORAGE AREAS, RESTRICTED AREAS, DISPOSAL AREAS IN BLACK LINES. INDICATE ALL BRIDGES OVER WATERWAYS AND GIVE THEIR APPROPRIATE CLEARANCE.
- J COLOR ALL DRYING SANDS EXPOSED AT MLW IN LIGHT GREEN AND COLOR WATER DEPTHS OF LESS THAN 10 FATHOMS IN LIGHT BLUE.
- K COLOR THE OUTLINE OF THE SHORES IN YELLOW. MARK PROMINENT BLUFFS OF CLIFFS WITH BLACK HATCHINGS. INDICATE ALL HIGH LAND AREAS (OVER 250') IN LIGHT BROWN OR GRAY.
- L INDICATE ALL ESTABLISHED FERRY CROSSINGS BY GREEN LINES.

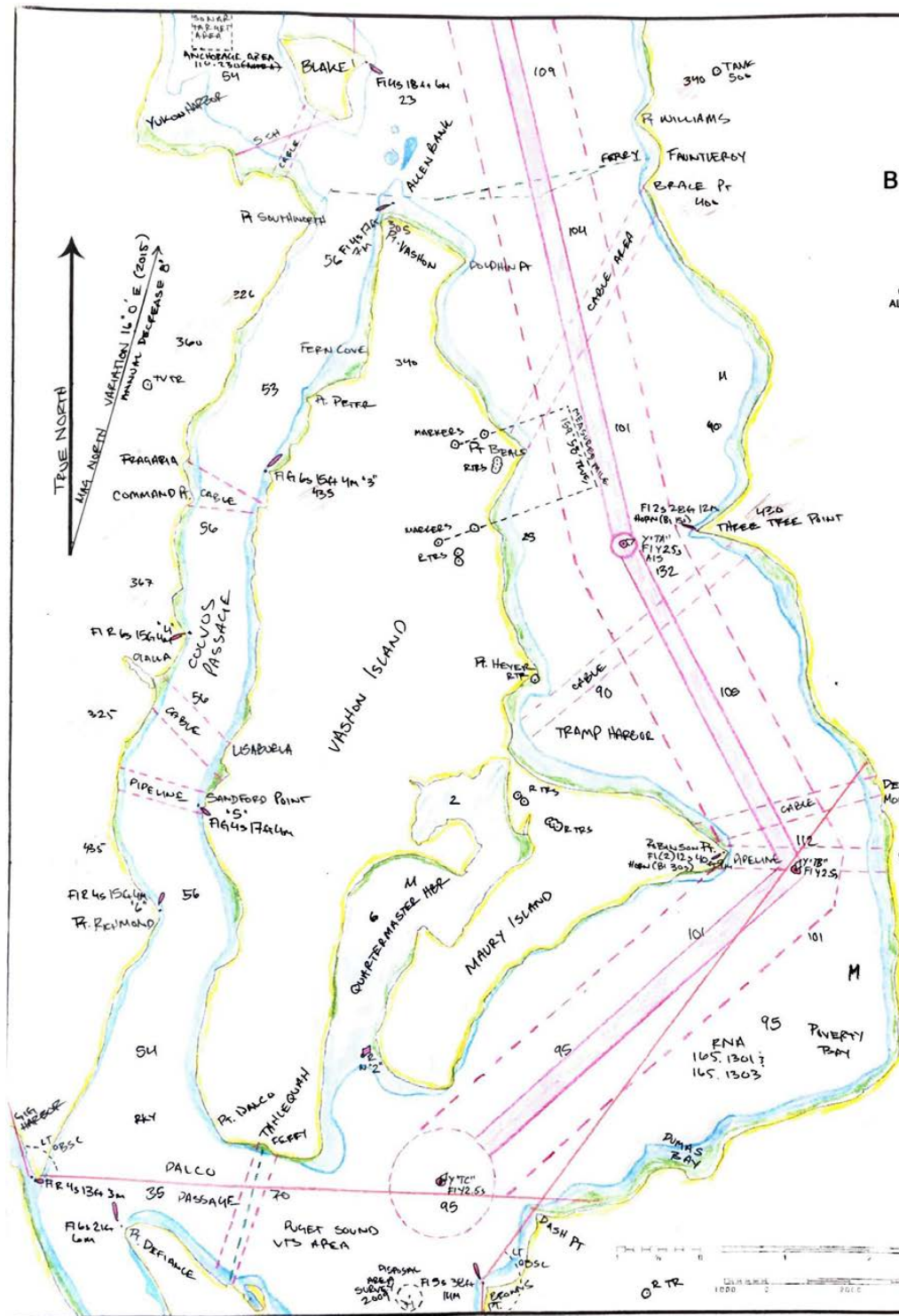
SOUNDINGS
IN FEET

Duwamish Waterway

TREVOR BOYNA
AUG. 2018

CHART #18448
CHARTLET #7

SOUTH PUGET SOUND
BLAKE ISLAND - POINT DEFIANCE



PUGET SOUND REGIONAL EXAMINATION CENTER
PILOTAGE EXAMINATION
INSTRUCTIONS FOR CHART SKETCHES

CHART SKETCHES MUST BE COMPLETED IN ONE SETTING. MAXIMUM ALLOWABLE TIME IS AS PER SESSION TIME SCHEDULE. SESSIONS FROM 0800 TO 1130 AND DURING THE AFTERNOON FROM 1230 TO 1600.

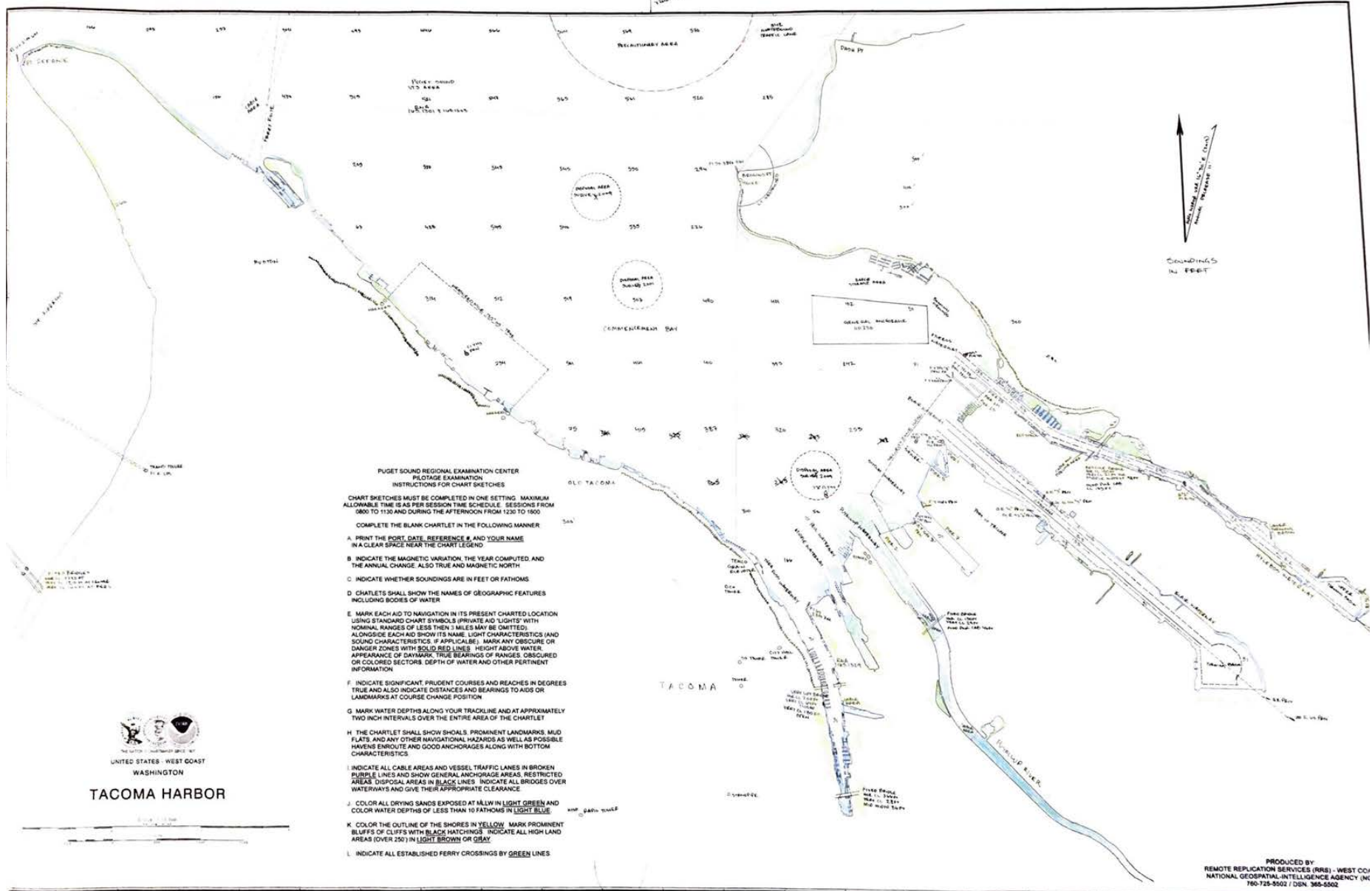
COMPLETE THE BLANK CHARTLET IN THE FOLLOWING MANNER:

- A. PRINT THE PORT, DATE, REFERENCE # AND YOUR NAME IN A CLEAR SPACE NEAR THE CHART LEGEND.
- B. INDICATE THE MAGNETIC VARIATION, THE YEAR COMPUTED, AND THE ANNUAL CHANGE, ALSO TRUE AND MAGNETIC NORTH.
- C. INDICATE WHETHER SOUNDINGS ARE IN FEET OR FATHOMS.
- D. CHARTLETS SHALL SHOW THE NAMES OF GEOGRAPHIC FEATURES INCLUDING BODIES OF WATER.
- E. MARK EACH AID TO NAVIGATION IN ITS PRESENT CHARTED LOCATION USING STANDARD CHART SYMBOLS (PRIVATE AID 'LIGHTS' WITH NOMINAL RANGES OF LESS THAN 3 MILES MAY BE OMITTED). ALONGSIDE EACH AID SHOW ITS NAME, LIGHT CHARACTERISTICS (AND SOUND CHARACTERISTICS, IF APPLICABLE). MARK ANY OBSCURE OR DANGER ZONES WITH SOLID RED LINES. HEIGHT ABOVE WATER, APPEARANCE OF DAYMARK, TRUE BEARINGS OF RANGES, OBSCURED OR COLORED SECTORS, DEPTH OF WATER AND OTHER PERTINENT INFORMATION.
- F. INDICATE SIGNIFICANT, PRUDENT COURSES AND REACHES IN DEGREES TRUE AND ALSO INDICATE DISTANCES AND BEARINGS TO AIDS OR LANDMARKS AT COURSE CHANGE POSITION.
- G. MARK WATER DEPTHS ALONG YOUR TRACKLINE AND AT APPROXIMATELY TWO INCH INTERVALS OVER THE ENTIRE AREA OF THE CHARTLET.
- H. THE CHARTLET SHALL SHOW SHOALS, PROMINENT LANDMARKS, MUD FLATS, AND ANY OTHER NAVIGATIONAL HAZARDS AS WELL AS POSSIBLE HAVENS ENROUTE AND GOOD ANCHORAGES ALONG WITH BOTTOM CHARACTERISTICS.
- I. INDICATE ALL CABLE AREAS AND VESSEL TRAFFIC LANES IN BROKEN PURPLE LINES AND SHOW GENERAL ANCHORAGE AREAS, RESTRICTED AREAS, DISPOSAL AREAS IN BLACK LINES. INDICATE ALL BRIDGES OVER WATERWAYS AND GIVE THEIR APPROPRIATE CLEARANCE.
- J. COLOR ALL DRYING SANDS EXPOSED AT MLW IN LIGHT GREEN AND COLOR WATER DEPTHS OF LESS THAN 10 FATHOMS IN LIGHT BLUE.
- K. COLOR THE OUTLINE OF THE SHORES IN YELLOW. MARK PROMINENT BLUFFS OR CLIFFS WITH BLACK HATCHINGS. INDICATE ALL HIGH LAND AREAS (OVER 250') IN LIGHT BROWN OR GRAY.
- L. INDICATE ALL ESTABLISHED FERRY CROSSINGS BY GREEN LINES.

PRODUCED BY:
REMOTE REPLICATION SERVICES (RRS) - WEST COAST
NATIONAL GEOSPATIAL-INTELLIGENCE AGENCY (NGA)
760-725-5502 / DSN: 365-5502

SCALE 1:80,000

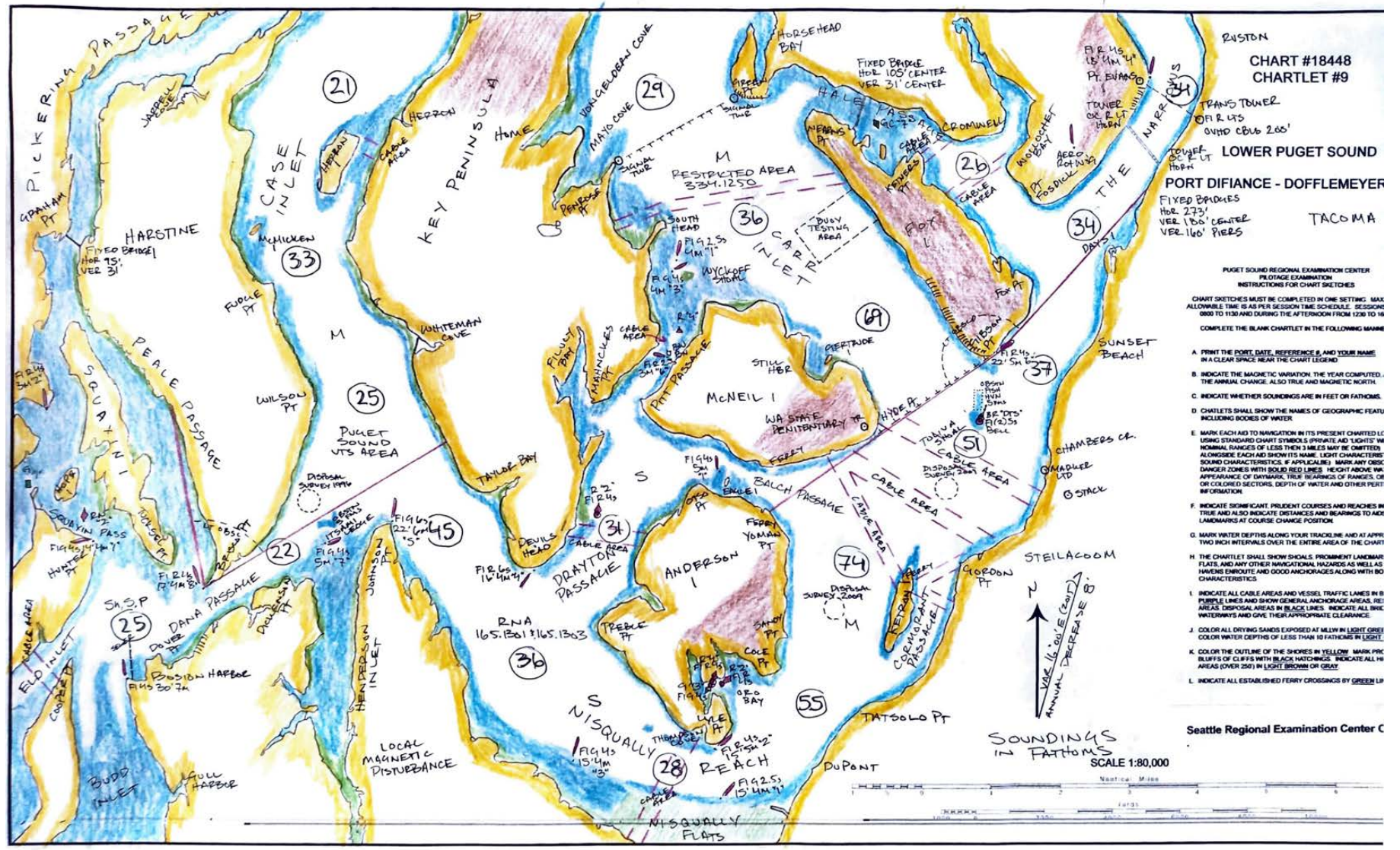




TACOMA HARBOR



PRODUCED BY
REMOTE REPLICATION SERVICES (RRS) - WEST COAST
NATIONAL GEOSPATIAL INTELLIGENCE AGENCY (NGA)
760-725-9502 / DSN 365-5502



Seattle Regional Examination Center Original

Olympia Terminal Port

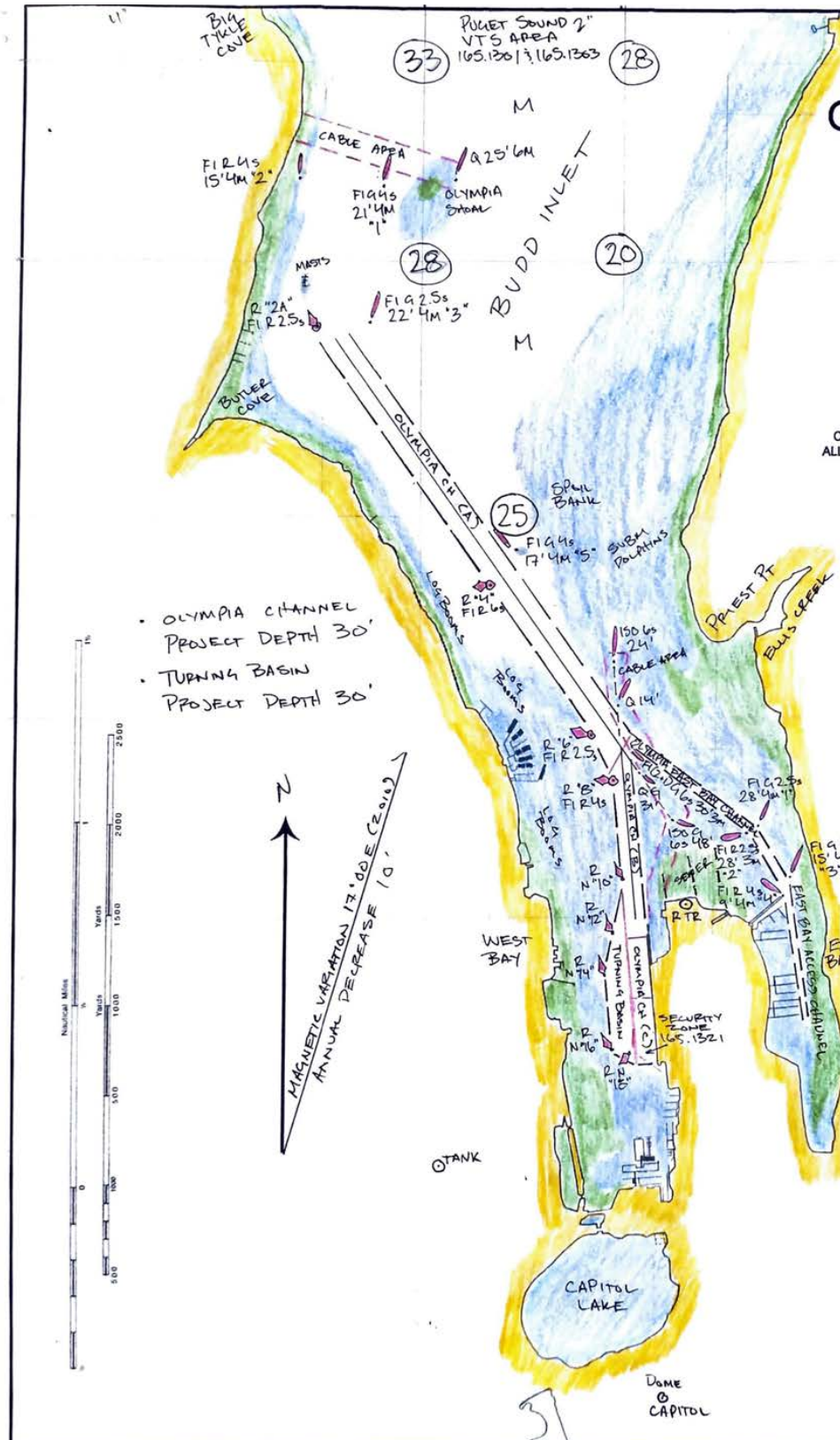
Chart #18456
Chartlet #10

PUGET SOUND REGIONAL EXAMINATION CENTER
PILOTAGE EXAMINATION
INSTRUCTIONS FOR CHART SKETCHES

CHART SKETCHES MUST BE COMPLETED IN ONE SETTING. MAXIMUM ALLOWABLE TIME IS AS PER SESSION TIME SCHEDULE. SESSIONS FROM 0800 TO 1130 AND DURING THE AFTERNOON FROM 1230 TO 1600.

COMPLETE THE BLANK CHARTLET IN THE FOLLOWING MANNER:

- A. PRINT THE PORT, DATE, REFERENCE #, AND YOUR NAME IN A CLEAR SPACE NEAR THE CHART LEGEND.
- B. INDICATE THE MAGNETIC VARIATION, THE YEAR COMPUTED, AND THE ANNUAL CHANGE; ALSO TRUE AND MAGNETIC NORTH.
- C. INDICATE WHETHER SOUNDINGS ARE IN FEET OR FATHOMS.
- D. CHARTLETS SHALL SHOW THE NAMES OF GEOGRAPHIC FEATURES INCLUDING BODIES OF WATER.
- E. MARK EACH AID TO NAVIGATION IN ITS PRESENT CHARTED LOCATION USING STANDARD CHART SYMBOLS (PRIVATE AID 'LIGHTS' WITH NOMINAL RANGES OF LESS THEN 3 MILES MAY BE OMITTED). ALONGSIDE EACH AID SHOW ITS NAME, LIGHT CHARACTERISTICS (AND SOUND CHARACTERISTICS, IF APPLICABLE). MARK ANY OBSCURE OR DANGER ZONES WITH SOLID RED LINES. HEIGHT ABOVE WATER, APPEARANCE OF DAYMARK, TRUE BEARINGS OF RANGES, OBSCURED OR COLORED SECTORS, DEPTH OF WATER AND OTHER PERTINENT INFORMATION.
- F. INDICATE SIGNIFICANT, PRUDENT COURSES AND REACHES IN DEGREES TRUE AND ALSO INDICATE DISTANCES AND BEARINGS TO AIDS OR LANDMARKS AT COURSE CHANGE POSITION.
- G. MARK WATER DEPTHS ALONG YOUR TRACKLINE AND AT APPROXIMATELY TWO INCH INTERVALS OVER THE ENTIRE AREA OF THE CHARTLET.
- H. THE CHARTLET SHALL SHOW SHOALS, PROMINENT LANDMARKS, MUD FLATS, AND ANY OTHER NAVIGATIONAL HAZARDS AS WELL AS POSSIBLE HAVENS ENROUTE AND GOOD ANCHORAGES ALONG WITH BOTTOM CHARACTERISTICS.
- I. INDICATE ALL CABLE AREAS AND VESSEL TRAFFIC LANES IN BROKEN PURPLE LINES AND SHOW GENERAL ANCHORAGE AREAS, RESTRICTED AREAS, DISPOSAL AREAS IN BLACK LINES. INDICATE ALL BRIDGES OVER WATERWAYS AND GIVE THEIR APPROPRIATE CLEARANCE.
- J. COLOR ALL DRYING SANDS EXPOSED AT MLLW IN LIGHT GREEN AND COLOR WATER DEPTHS OF LESS THAN 10 FATHOMS IN LIGHT BLUE.
- K. COLOR THE OUTLINE OF THE SHORES IN YELLOW. MARK PROMINENT BLUFFS OF CLIFFS WITH BLACK HATCHINGS. INDICATE ALL HIGH LAND AREAS (OVER 250') IN LIGHT BROWN OR GRAY.
- L. INDICATE ALL ESTABLISHED FERRY CROSSINGS BY GREEN LINES.



OLYMPIA CHANNEL
PROJECT DEPTH 30'

TURNINA BASIN
PROJECT DEPTH 30'

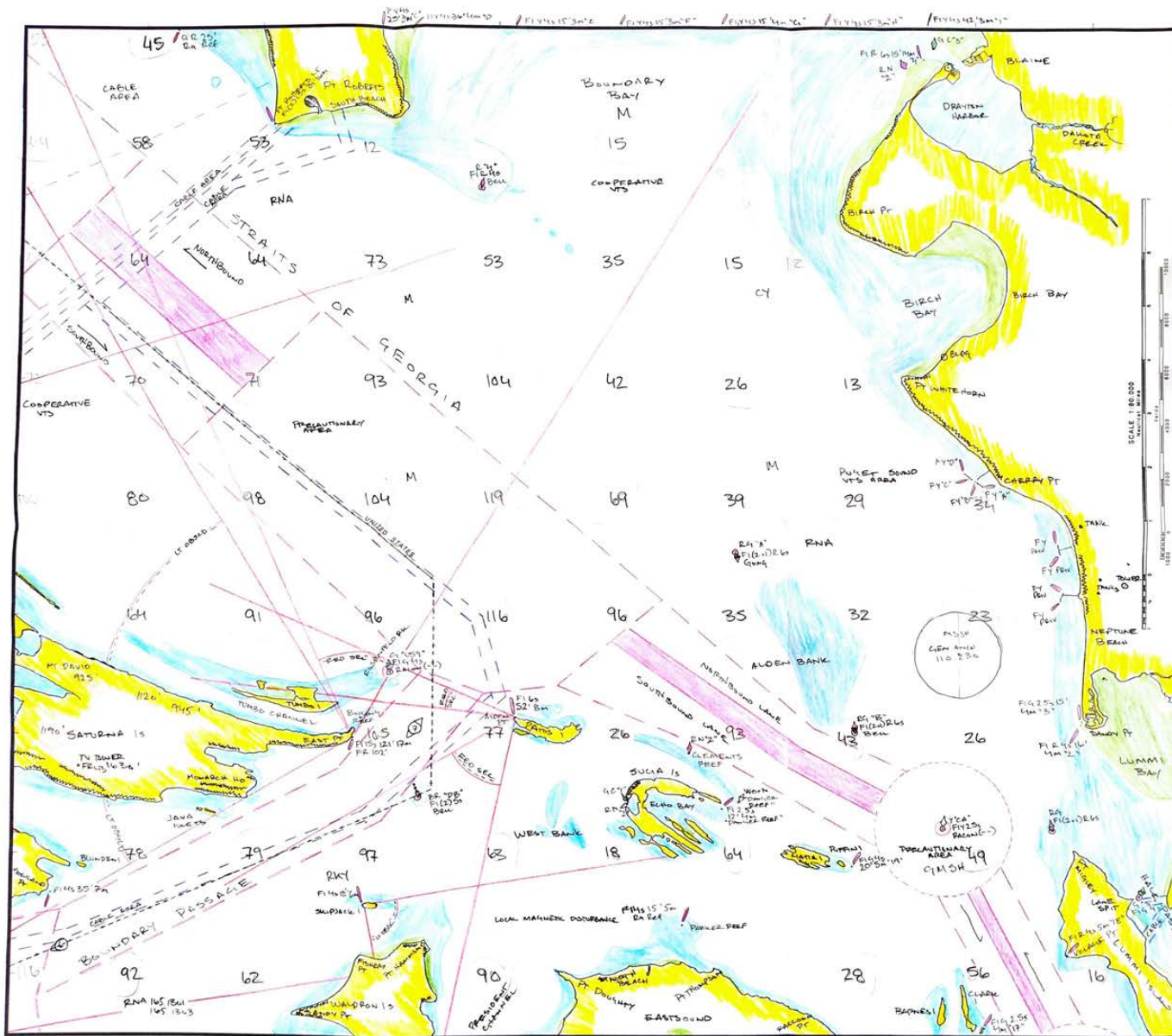
MAGNETIC VARIATION 17.00E (2016)
ANNUAL DECREASE 1.0'



EAST BAY CHANNEL PROJECT DEPTH 13'

OLYMPIA

PRODUCED BY:
REMOTE REPLICATION SERVICES (RRS) - WEST COAST
NATIONAL GEOSPATIAL-INTELLIGENCE AGENCY (NGA)
760-725-5502 / DSN: 365-5502



Straights of Georgia Chart 18421 #11

PUGET SOUND REGIONAL EXAMINATION CENTER
PILOTAGE EXAMINATION
INSTRUCTIONS FOR CHART SKETCHES

CHART SKETCHES MUST BE COMPLETED IN ONE SETTING. MAXIMUM ALLOWABLE TIME IS AS PER SESSION TIME SCHEDULE. SESSIONS FROM 0800 TO 1130 AND DURING THE AFTERNOON FROM 1230 TO 1600.

COMPLETE THE BLANK CHARTLET IN THE FOLLOWING MANNER:

- PRINT THE PORT, DATE, REFERENCE #, AND YOUR NAME IN A CLEAR SPACE NEAR THE CHART LEGEND
- INDICATE THE MAGNETIC VARIATION, THE YEAR COMPUTED, AND THE ANNUAL CHANGE, ALSO TRUE AND MAGNETIC NORTH.
- INDICATE WHETHER SOUNDINGS ARE IN FEET OR FATHOMS.
- CHARTLETS SHALL SHOW THE NAMES OF GEOGRAPHIC FEATURES INCLUDING BODIES OF WATER.
- MARK EACH AID TO NAVIGATION IN ITS PRESENT CHARTED LOCATION USING STANDARD CHART SYMBOLS (PRIVATE AID 'LIGHTS' WITH NOMINAL RANGES OF LESS THAN 3 MILES MAY BE OMITTED) ALONGSIDE EACH AID SHOW ITS NAME. LIGHT CHARACTERISTICS (AND SOUND CHARACTERISTICS, IF APPLICABLE). MARK ANY OBSCURE OR DANGER ZONES WITH SOLID RED LINES. HEIGHT ABOVE WATER, APPEARANCE OF DAYMARK, TRUE BEARINGS OF RANGES, OBSCURED OR COLORED SECTORS, DEPTH OF WATER AND OTHER PERTINENT INFORMATION.
- INDICATE SIGNIFICANT, PRUDENT COURSES AND REACHES IN DEGREES TRUE AND ALSO INDICATE DISTANCES AND BEARINGS TO AIDS OR LANDMARKS AT COURSE CHANGE POSITION.
- MARK WATER DEPTHS ALONG YOUR TRACKLINE AND AT APPROXIMATELY TWO INCH INTERVALS OVER THE ENTIRE AREA OF THE CHARTLET.
- THE CHARTLET SHALL SHOW SHOALS, PROMINENT LANDMARKS, MUD FLATS, AND ANY OTHER NAVIGATIONAL HAZARDS AS WELL AS POSSIBLE HAVENS ENROUTE AND GOOD ANCHORAGES ALONG WITH BOTTOM CHARACTERISTICS.
- INDICATE ALL CABLE AREAS AND VESSEL TRAFFIC LANES IN BROKEN PURPLE LINES AND SHOW GENERAL ANCHORAGE AREAS, RESTRICTED AREAS, DISPOSAL AREAS IN BLACK LINES. INDICATE ALL BRIDGES OVER WATERWAYS AND GIVE THEIR APPROPRIATE CLEARANCE.
- COLOR ALL DRYING SANDS EXPOSED AT MLW IN LIGHT GREEN AND COLOR WATER DEPTHS OF LESS THAN 10 FATHOMS IN LIGHT BLUE
- COLOR THE OUTLINE OF THE SHORES IN YELLOW. MARK PROMINENT BLUFFS OF CLIFFS WITH BLACK HATCHINGS. INDICATE ALL HIGH LAND AREAS (OVER 250') IN LIGHT BROWN OR GRAY.
- INDICATE ALL ESTABLISHED FERRY CROSSINGS BY GREEN LINES.



SOUNDINGS IN
FATHOMS

PRODUCED BY
REMOTE REPLICATION SERVICES (RRS) - WEST COAST
NATIONAL GEOSPATIAL INTELLIGENCE AGENCY (NGA)
760-725-5922 / ODN 365-5922

ROSARIO STRAIT

CHART # 18421

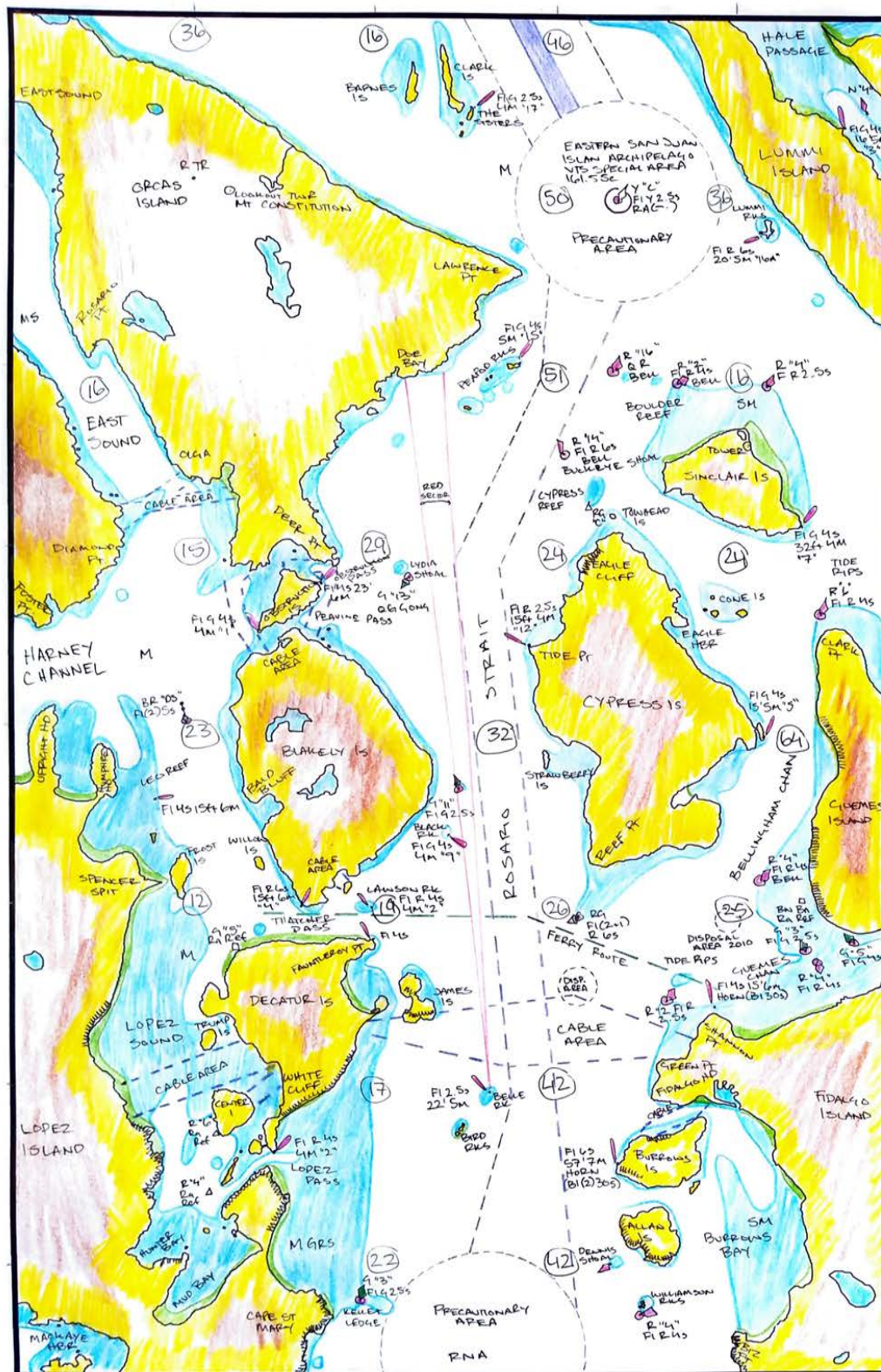
CHARTLET #12

PUGET SOUND REGIONAL EXAMINATION CENTER
PILOTAGE EXAMINATION
INSTRUCTIONS FOR CHART SKETCHES

CHART SKETCHES MUST BE COMPLETED IN ONE SETTING. MAXIMUM ALLOWABLE TIME IS AS PER SESSION TIME SCHEDULE. SESSIONS FROM 0800 TO 1130 AND DURING THE AFTERNOON FROM 1230 TO 1600.

COMPLETE THE BLANK CHARTLET IN THE FOLLOWING MANNER:

- PRINT THE PORT, DATE, REFERENCE #, AND YOUR NAME IN A CLEAR SPACE NEAR THE CHART LEGEND.
- INDICATE THE MAGNETIC VARIATION, THE YEAR COMPUTED AND THE ANNUAL CHANGE. ALSO TRUE AND MAGNETIC NORTH.
- INDICATE WHETHER SOUNDINGS ARE IN FEET OR FATHOMS.
- CHARTLETS SHALL SHOW THE NAMES OF GEOGRAPHIC FEATURES INCLUDING BODIES OF WATER.
- MARK EACH AID TO NAVIGATION IN ITS PRESENT CHARTED LOCATION USING STANDARD CHART SYMBOLS (PRIVATE AND "LIGHTS" WITH NOMINAL RANGES OF LESS THAN 1 MILES MAY BE OMITTED) ALONGSIDE EACH AID SHOW ITS NAME, LIGHT CHARACTERISTICS (AND SOUND CHARACTERISTICS IF APPLICABLE). MARK ANY OBSCURE OR DANGER ZONES WITH SOLID RED LINES. HEIGHT ABOVE WATER, APPEARANCE OF DAYMARK, TRUE BEARINGS OF RANGES, OBSERVED OR COLORED SECTORS, DEPTH OF WATER AND OTHER PERTINENT INFORMATION.
- INDICATE SIGNIFICANT, PRUDENT COURSES AND REACHES IN DEGREES TRUE AND ALSO INDICATE DISTANCES AND BEARINGS TO AIDS OR LANDMARKS AT COURSE CHANGE POSITION.
- MARK WATER DEPTHS ALONG YOUR TRACKING LINE AND AT APPROXIMATELY TWO INCH INTERVALS OVER THE ENTIRE AREA OF THE CHARTLET.
- THE CHARTLET SHALL SHOW SHOALS, PROMINENT LANDMARKS, MUD FLATS, AND ANY OTHER NAVIGATIONAL HAZARDS AS WELL AS POSSIBLE MARKS ENROUTE AND GOOD ANCHORAGE ALONG WITH BOTTOM CHARACTERISTICS.
- INDICATE ALL CABLE AREAS AND VESSEL TRAFFIC LANS IN BROKEN PURPLE LINES AND SHOW GENERAL ANCHORAGE AREAS, RESTRICTED AREAS, DISPOSAL AREAS IN BLACK LINES; INDICATE ALL BRIDGES OVER WATERWAYS AND GIVE THEIR APPROPRIATE CLEARANCE.
- COLOR ALL DRYING SANDS EXPOSED AT MLW IN LIGHT GREEN AND COLOR WATER DEPTHS OF LESS THAN 10 FATHOMS IN LIGHT BLUE.
- COLOR THE OUTLINE OF THE SHORES IN YELLOW. MARK PROMINENT BLUFFS OF CLIFFS WITH BLACK HATCHINGS. INDICATE ALL HIGH LAND AREAS (OVER 200') IN LIGHT BROWN OR GRAY.
- INDICATE ALL ESTABLISHED FERRY CROSSINGS BY GREEN LINES.



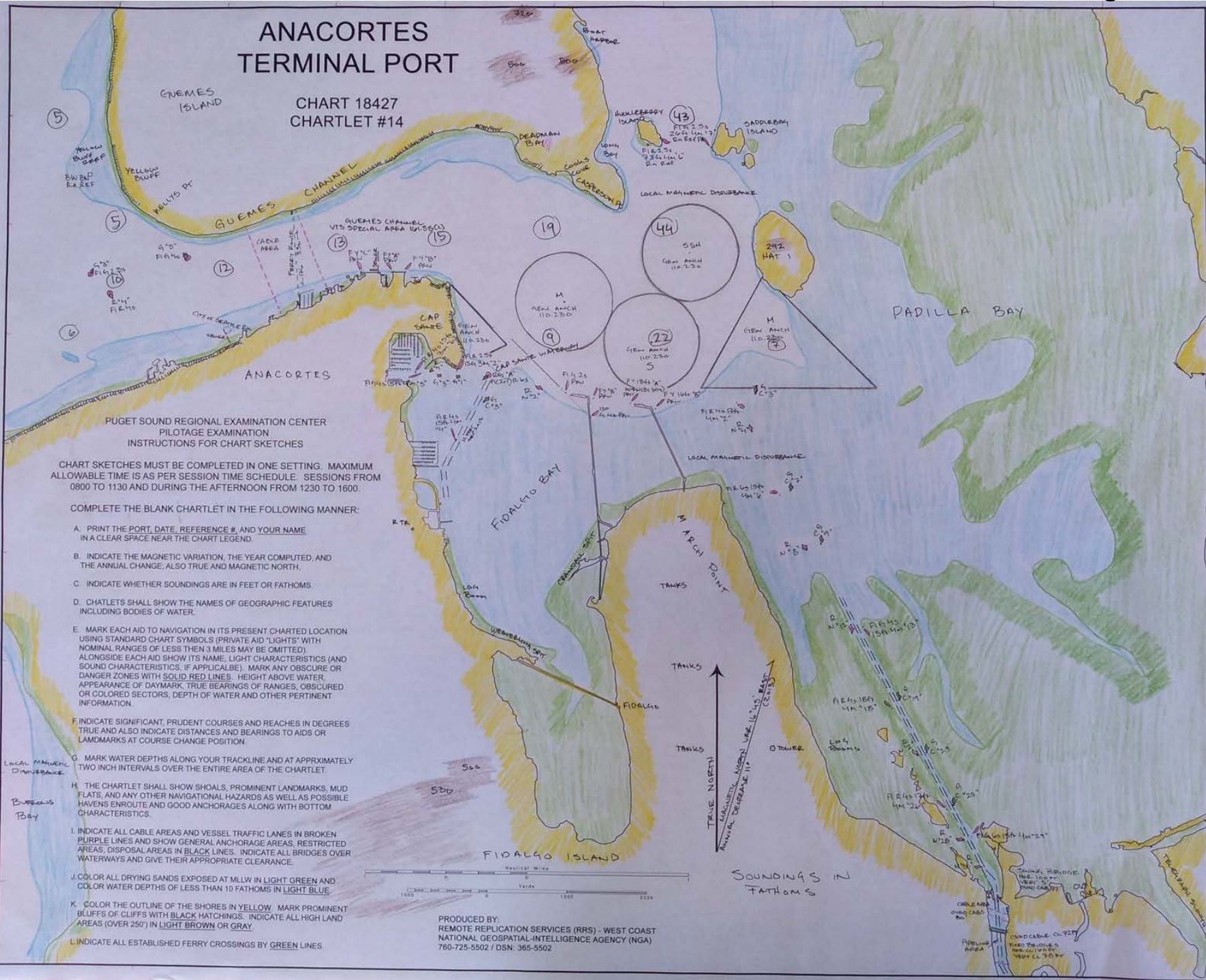
SCALE 1:80,000
Nautical Miles



PRODUCED BY:
REMOTE REPLICATION SERVICES (RRS) - WEST COAST
NATIONAL GEOSPATIAL-INTELLIGENCE AGENCY (NGA)
760-725-5502 / DSN: 365-5502 012/016

ANACORTES TERMINAL PORT

CHART 18427
CHARTLET #14



PUGET SOUND REGIONAL EXAMINATION CENTER
PILOTAGE EXAMINATION
INSTRUCTIONS FOR CHART SKETCHES

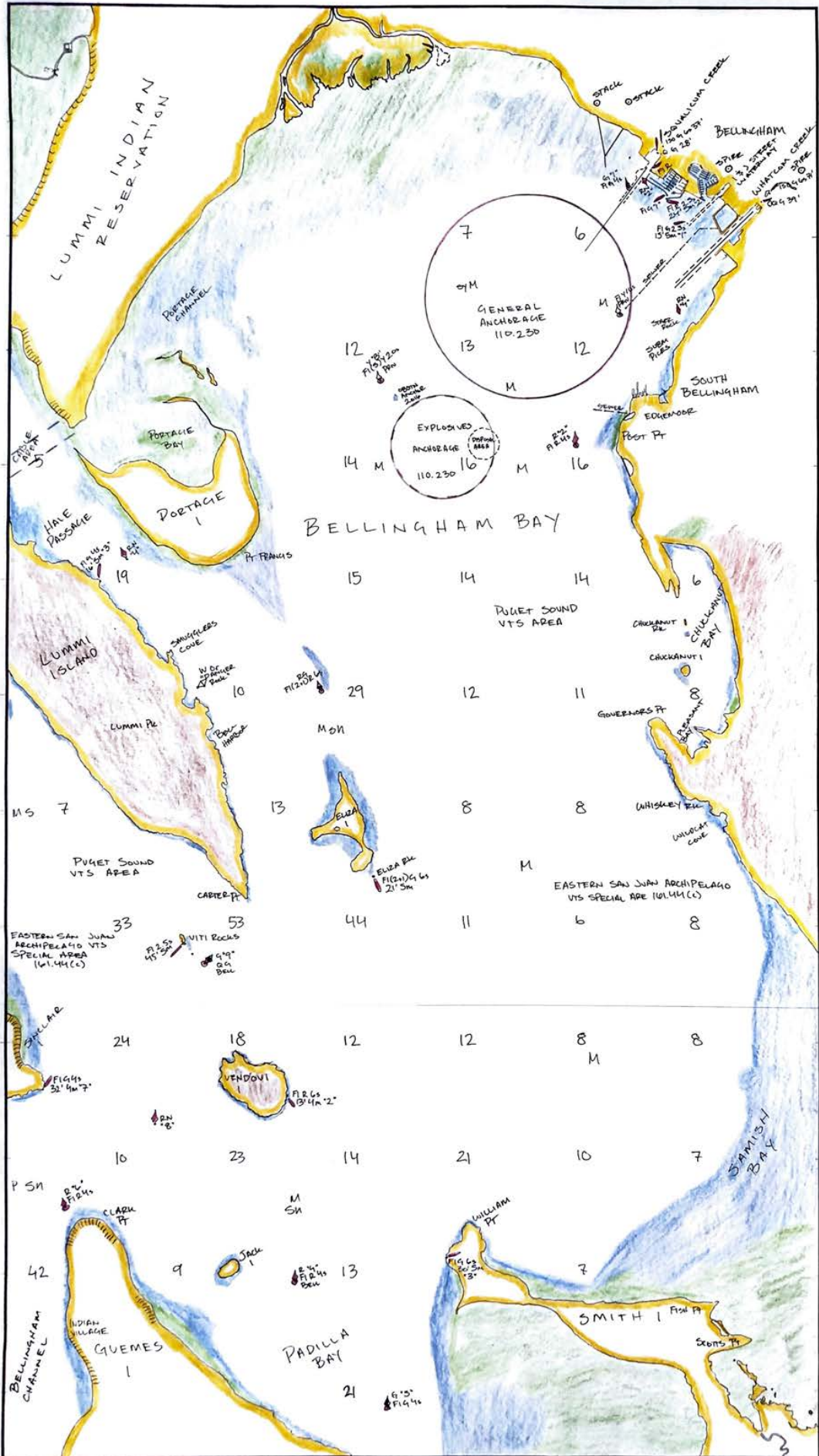
CHART SKETCHES MUST BE COMPLETED IN ONE SETTING. MAXIMUM ALLOWABLE TIME IS AS PER SESSION TIME SCHEDULE. SESSIONS FROM 0800 TO 1130 AND DURING THE AFTERNOON FROM 1230 TO 1600.

COMPLETE THE BLANK CHARTLET IN THE FOLLOWING MANNER:

- A. PRINT THE PORT, DATE, REFERENCE #, AND YOUR NAME IN A CLEAR SPACE NEAR THE CHART LEGEND.
- B. INDICATE THE MAGNETIC VARIATION, THE YEAR COMPUTED, AND THE ANNUAL CHANGE. ALSO TRUE AND MAGNETIC NORTH.
- C. INDICATE WHETHER SOUNDINGS ARE IN FEET OR FATHOMS.
- D. CHARTLET SHALL SHOW THE NAMES OF GEOGRAPHIC FEATURES INCLUDING BODIES OF WATER.
- E. MARK EACH AID TO NAVIGATION IN ITS PRESENT CHARTED LOCATION USING STANDARD CHART SYMBOLS (PRIVATE AID "LIGHTS" WITH NOMINAL RANGES OF LESS THEN 3 MILES MAY BE OMITTED) ALONGSIDE EACH AID SHOW ITS NAME, LIGHT CHARACTERISTICS (AND SOUND CHARACTERISTICS, IF APPLICABLE). MARK ANY OBSCURE OR DANGER ZONES WITH SOLID RED LINES. HEIGHT ABOVE WATER, APPEARANCE OF DAYMARK, TRUE BEARINGS OF RANGES, OBSCURED OR COLORED SECTORS, DEPTH OF WATER AND OTHER PERTINENT INFORMATION.
- F. INDICATE SIGNIFICANT PRUDENT COURSES AND REACHES IN DEGREES TRUE AND ALSO INDICATE DISTANCES AND BEARINGS TO AIDS OR LANDMARKS AT COURSE CHANGE POSITION.
- G. MARK WATER DEPTHS ALONG YOUR TRACKLINE AND AT APPROXIMATELY TWO INCH INTERVALS OVER THE ENTIRE AREA OF THE CHARTLET.
- H. THE CHARTLET SHALL SHOW SHOALS, PROMINENT LANDMARKS, MUD FLATS, AND ANY OTHER NAVIGATIONAL HAZARDS AS WELL AS POSSIBLE HAVENS ENROUTE AND GOOD ANCHORAGES ALONG WITH BOTTOM CHARACTERISTICS.
- I. INDICATE ALL CABLE AREAS AND VESSEL TRAFFIC LANES IN BROKEN PURPLE LINES AND SHOW GENERAL ANCHORAGE AREAS, RESTRICTED AREAS, DISPOSAL AREAS IN BLACK LINES. INDICATE ALL BRIDGES OVER WATERWAYS AND GIVE THEIR APPROPRIATE CLEARANCE.
- J. COLOR ALL DRYING SANDS EXPOSED AT MLW IN LIGHT GREEN AND COLOR WATER DEPTHS OF LESS THAN 10 FATHOMS IN LIGHT BLUE.
- K. COLOR THE OUTLINE OF THE SHORES IN YELLOW. MARK PROMINENT BLUFFS OF CLIFFS WITH BLACK HATCHINGS. INDICATE ALL HIGH LAND AREAS (OVER 250') IN LIGHT BROWN OR GRAY.
- L. INDICATE ALL ESTABLISHED FERRY CROSSINGS BY GREEN LINES.

PRODUCED BY:
REMOTE REPLICATION SERVICES (RRS) - WEST COAST
NATIONAL GEOSPATIAL-INTELLIGENCE AGENCY (NGA)
760-725-5502 / DSN: 365-5502

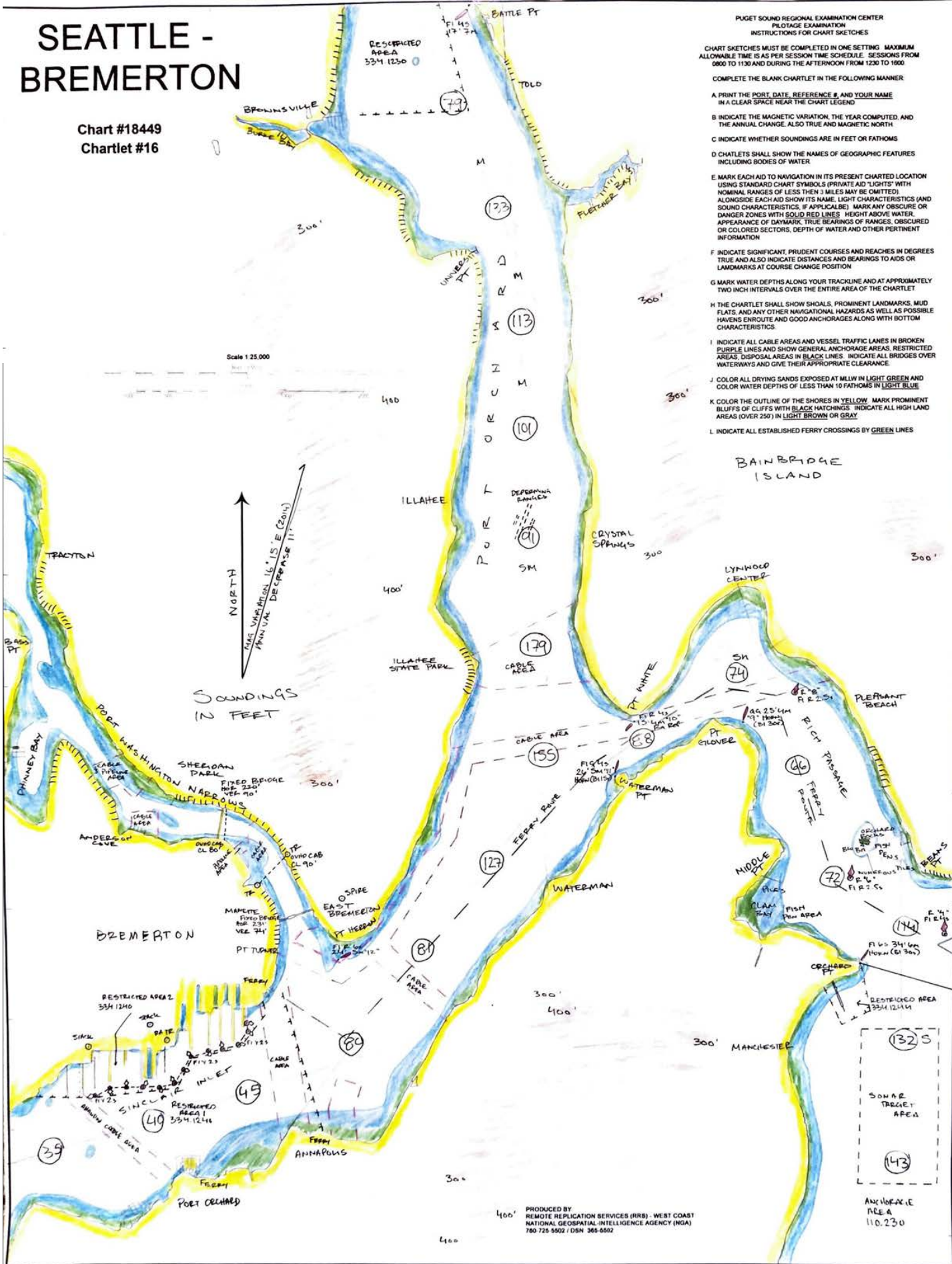
SOUNDINGS IN
FATHOMS



SEATTLE - BREMERTON

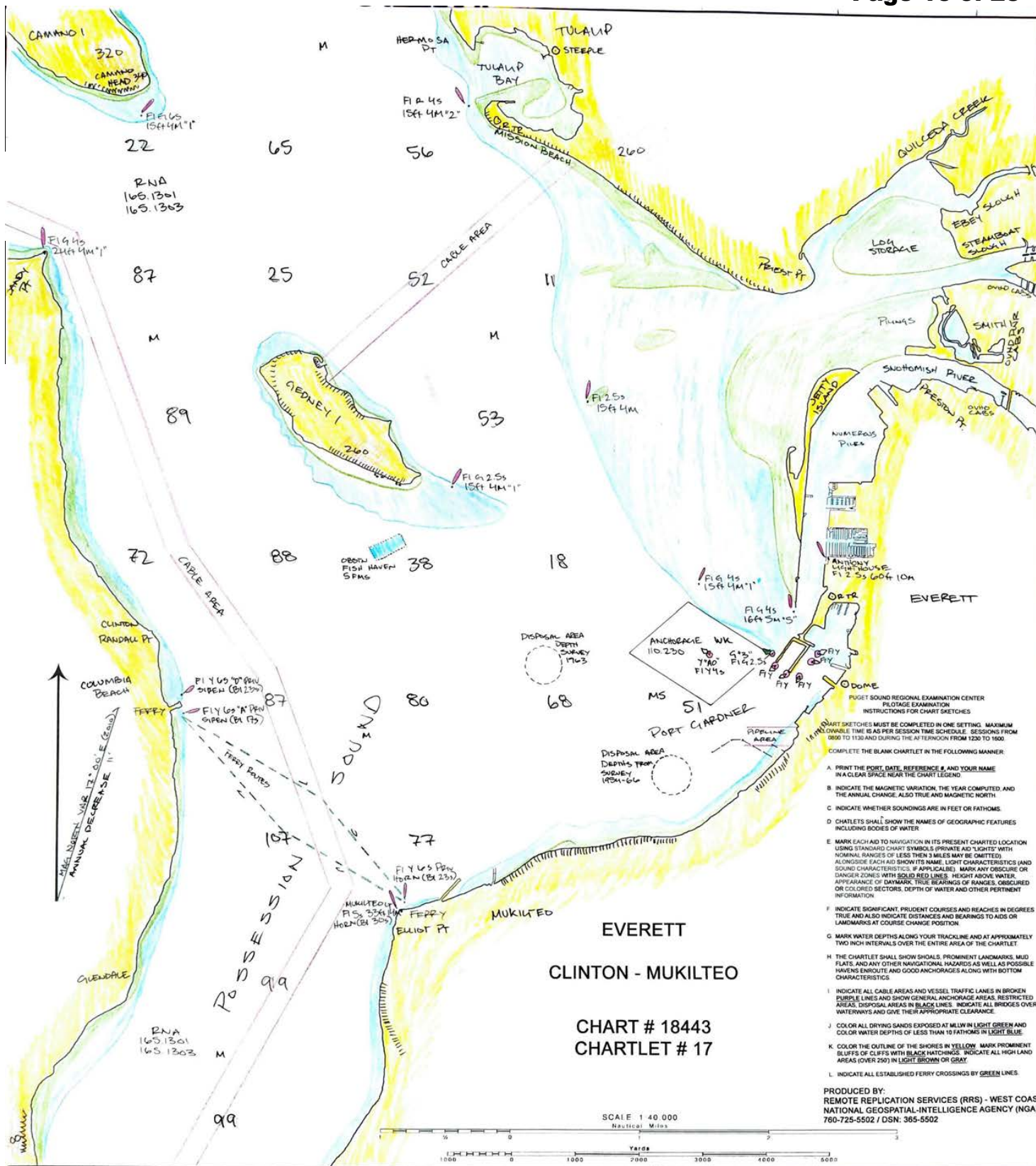
Chart #18449
Chartlet #16

- PUGET SOUND REGIONAL EXAMINATION CENTER
PILOTAGE EXAMINATION
INSTRUCTIONS FOR CHART SKETCHES
- CHART SKETCHES MUST BE COMPLETED IN ONE SETTING. MAXIMUM ALLOWABLE TIME IS AS PER SESSION TIME SCHEDULE. SESSIONS FROM 0800 TO 1130 AND DURING THE AFTERNOON FROM 1200 TO 1600
- COMPLETE THE BLANK CHARTLET IN THE FOLLOWING MANNER:
- PRINT THE PORT, DATE, REFERENCE # AND YOUR NAME IN A CLEAR SPACE NEAR THE CHART LEGEND
 - INDICATE THE MAGNETIC VARIATION, THE YEAR COMPUTED, AND THE ANNUAL CHANGE, ALSO TRUE AND MAGNETIC NORTH
 - INDICATE WHETHER SOUNDINGS ARE IN FEET OR FATHOMS
 - CHARTLETS SHALL SHOW THE NAMES OF GEOGRAPHIC FEATURES INCLUDING BODIES OF WATER
 - MARK EACH AID TO NAVIGATION IN ITS PRESENT CHARTED LOCATION USING STANDARD CHART SYMBOLS (PRIVATE AID "LIGHTS" WITH NOMINAL RANGES OF LESS THAN 3 MILES MAY BE OMITTED) ALONGSIDE EACH AID SHOW ITS NAME, LIGHT CHARACTERISTICS (AND SOUND CHARACTERISTICS, IF APPLICABLE) MARK ANY OBSCURE OR DANGER ZONES WITH SOLID RED LINES. MARK ANY OBSCURE OR APPEARANCE OF DAYMARK, TRUE BEARINGS OF RANGES, OBSCURED OR COLORED SECTORS, DEPTH OF WATER AND OTHER PERTINENT INFORMATION
 - INDICATE SIGNIFICANT, PRUDENT COURSES AND REACHES IN DEGREES TRUE AND ALSO INDICATE DISTANCES AND BEARINGS TO AIDS OR LANDMARKS AT COURSE CHANGE POSITION
 - MARK WATER DEPTHS ALONG YOUR TRACKLINE AND AT APPROXIMATELY TWO INCH INTERVALS OVER THE ENTIRE AREA OF THE CHARTLET
 - THE CHARTLET SHALL SHOW SHOALS, PROMINENT LANDMARKS, MUD FLATS, AND ANY OTHER NAVIGATIONAL HAZARDS AS WELL AS POSSIBLE HAVING ENROUTE AND GOOD ANCHORAGE ALONG WITH BOTTOM CHARACTERISTICS
 - INDICATE ALL CABLE AREAS AND VESSEL TRAFFIC LANES IN BROKEN PURPLE LINES AND SHOW GENERAL ANCHORAGE AREAS, RESTRICTED AREAS, DISPOSAL AREAS IN BLACK LINES. INDICATE ALL BRIDGES OVER WATERWAYS AND GIVE THEIR APPROPRIATE CLEARANCE
 - COLOR ALL DRYING SANDS EXPOSED AT MLW IN LIGHT GREEN AND COLOR WATER DEPTHS OF LESS THAN 10 FATHOMS IN LIGHT BLUE
 - COLOR THE OUTLINE OF THE SHORES IN YELLOW. MARK PROMINENT BLUFFS OF CLIFFS WITH BLACK HATCHINGS. INDICATE ALL HIGH LAND AREAS (OVER 250') IN LIGHT BROWN OR BDAY
 - INDICATE ALL ESTABLISHED FERRY CROSSINGS BY GREEN LINES



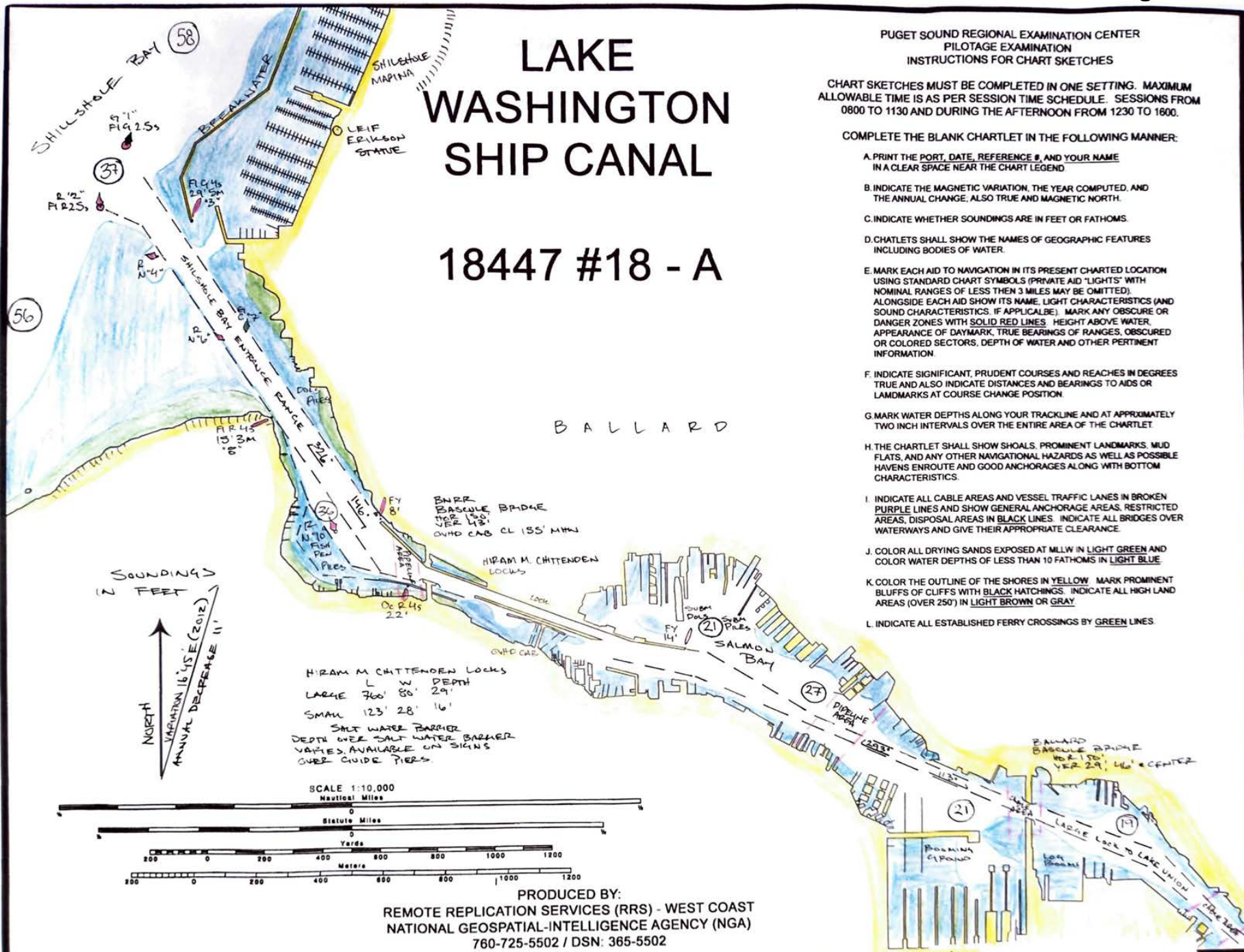
PRODUCED BY
REMOTE REPLICATION SERVICES (RRS) - WEST COAST
NATIONAL GEOSPATIAL-INTELLIGENCE AGENCY (NGA)
760 725 5502 / DSN 365 5502

AMMOBILE
AREA
110.230



LAKE WASHINGTON SHIP CANAL

18447 #18 - A



PUGET SOUND REGIONAL EXAMINATION CENTER
PILOTAGE EXAMINATION
INSTRUCTIONS FOR CHART SKETCHES

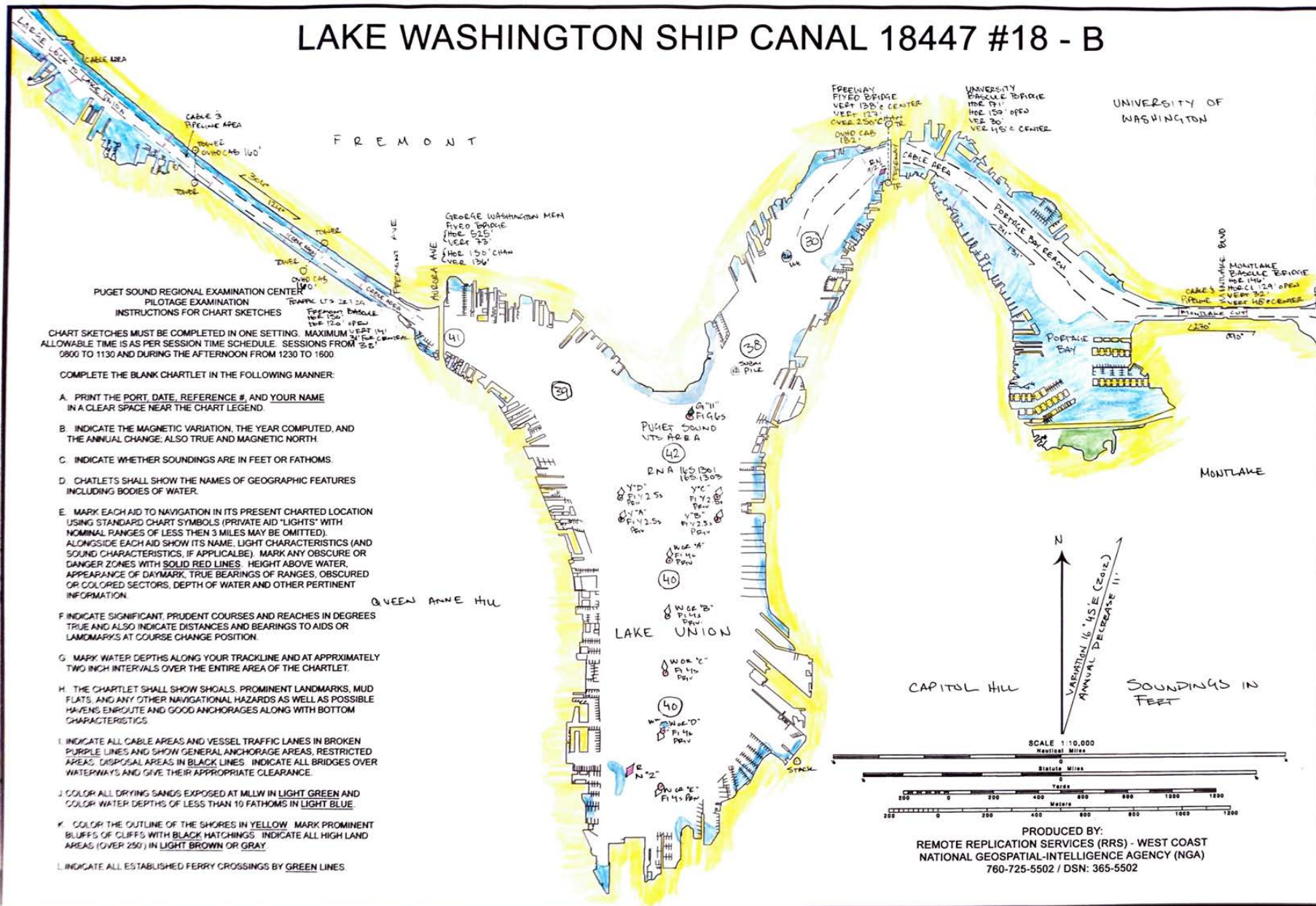
CHART SKETCHES MUST BE COMPLETED IN ONE SETTING. MAXIMUM ALLOWABLE TIME IS AS PER SESSION TIME SCHEDULE. SESSIONS FROM 0800 TO 1130 AND DURING THE AFTERNOON FROM 1230 TO 1600.

COMPLETE THE BLANK CHARTLET IN THE FOLLOWING MANNER:

- A. PRINT THE PORT, DATE, REFERENCE #, AND YOUR NAME IN A CLEAR SPACE NEAR THE CHART LEGEND
- B. INDICATE THE MAGNETIC VARIATION, THE YEAR COMPUTED, AND THE ANNUAL CHANGE, ALSO TRUE AND MAGNETIC NORTH.
- C. INDICATE WHETHER SOUNDINGS ARE IN FEET OR FATHOMS.
- D. CHARTLETS SHALL SHOW THE NAMES OF GEOGRAPHIC FEATURES INCLUDING BODIES OF WATER.
- E. MARK EACH AID TO NAVIGATION IN ITS PRESENT CHARTED LOCATION USING STANDARD CHART SYMBOLS (PRIVATE AID "LIGHTS" WITH NOMINAL RANGES OF LESS THAN 3 MILES MAY BE OMITTED). ALONGSIDE EACH AID SHOW ITS NAME, LIGHT CHARACTERISTICS (AND SOUND CHARACTERISTICS, IF APPLICABLE); MARK ANY OBSCURE OR DANGER ZONES WITH SOLID RED LINES. HEIGHT ABOVE WATER, APPEARANCE OF DAYMARK, TRUE BEARINGS OF RANGES, OBSCURED OR COLORED SECTORS, DEPTH OF WATER AND OTHER PERTINENT INFORMATION.
- F. INDICATE SIGNIFICANT, PRUDENT COURSES AND REACHES IN DEGREES TRUE AND ALSO INDICATE DISTANCES AND BEARINGS TO AIDS OR LANDMARKS AT COURSE CHANGE POSITION.
- G. MARK WATER DEPTHS ALONG YOUR TRACKLINE AND AT APPROXIMATELY TWO INCH INTERVALS OVER THE ENTIRE AREA OF THE CHARTLET.
- H. THE CHARTLET SHALL SHOW SHOALS, PROMINENT LANDMARKS, MUD FLATS, AND ANY OTHER NAVIGATIONAL HAZARDS AS WELL AS POSSIBLE HAVENS ENROUTE AND GOOD ANCHORAGES ALONG WITH BOTTOM CHARACTERISTICS.
- I. INDICATE ALL CABLE AREAS AND VESSEL TRAFFIC LANES IN BROKEN PURPLE LINES AND SHOW GENERAL ANCHORAGE AREAS, RESTRICTED AREAS, DISPOSAL AREAS IN BLACK LINES. INDICATE ALL BRIDGES OVER WATERWAYS AND GIVE THEIR APPROPRIATE CLEARANCE.
- J. COLOR ALL DRYING SANDS EXPOSED AT MLLW IN LIGHT GREEN AND COLOR WATER DEPTHS OF LESS THAN 10 FATHOMS IN LIGHT BLUE.
- K. COLOR THE OUTLINE OF THE SHORES IN YELLOW. MARK PROMINENT BLUFFS OF CLIFFS WITH BLACK HATCHINGS. INDICATE ALL HIGH LAND AREAS (OVER 250') IN LIGHT BROWN OR GRAY.
- L. INDICATE ALL ESTABLISHED FERRY CROSSINGS BY GREEN LINES.

PRODUCED BY:
REMOTE REPLICATION SERVICES (RRS) - WEST COAST
NATIONAL GEOSPATIAL-INTELLIGENCE AGENCY (NGA)
760-725-5502 / DSN: 365-5502

LAKE WASHINGTON SHIP CANAL 18447 #18 - B



PUGET SOUND REGIONAL EXAMINATION CENTER
PILOTAGE EXAMINATION
INSTRUCTIONS FOR CHART SKETCHES

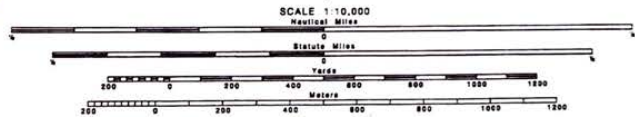
CHART SKETCHES MUST BE COMPLETED IN ONE SETTING. MAXIMUM PERMITTED ALLOWABLE TIME IS AS PER SESSION TIME SCHEDULE. SESSIONS FROM 0800 TO 1130 AND DURING THE AFTERNOON FROM 1230 TO 1800

COMPLETE THE BLANK CHARTLET IN THE FOLLOWING MANNER:

- PRINT THE PORT, DATE, REFERENCE #, AND YOUR NAME IN A CLEAR SPACE NEAR THE CHART LEGEND.
- INDICATE THE MAGNETIC VARIATION, THE YEAR COMPUTED, AND THE ANNUAL CHANGE. ALSO TRUE AND MAGNETIC NORTH.
- INDICATE WHETHER SOUNDINGS ARE IN FEET OR FATHOMS.
- CHARTLETS SHALL SHOW THE NAMES OF GEOGRAPHIC FEATURES INCLUDING BODIES OF WATER.
- MARK EACH AID TO NAVIGATION IN ITS PRESENT CHARTED LOCATION USING STANDARD CHART SYMBOLS (PRIVATE AID "LIGHTS" WITH NOMINAL RANGES OF LESS THEN 3 MILES MAY BE OMITTED). ALONGSIDE EACH AID SHOW ITS NAME, LIGHT CHARACTERISTICS (AND SOUND CHARACTERISTICS, IF APPLICABLE). MARK ANY OBSCURE OR DANGER ZONES WITH SOLID RED LINES. HEIGHT ABOVE WATER, APPEARANCE OF DAYMARK, TRUE BEARINGS OF RANGES, OBSCURED OR COLORED SECTORS, DEPTH OF WATER AND OTHER PERTINENT INFORMATION.
- INDICATE SIGNIFICANT PRUDENT COURSES AND REACHES IN DEGREES TRUE AND ALSO INDICATE DISTANCES AND BEARINGS TO AIDS OR LANDMARKS AT COURSE CHANGE POSITION.
- MARK WATER DEPTHS ALONG YOUR TRACKLINE AND AT APPROXIMATELY TWO INCH INTERVALS OVER THE ENTIRE AREA OF THE CHARTLET.
- THE CHARTLET SHALL SHOW SHOALS, PROMINENT LANDMARKS, MUD FLATS, AND ANY OTHER NAVIGATIONAL HAZARDS AS WELL AS POSSIBLE HAVENS ENROUTE AND GOOD ANCHORAGES ALONG WITH BOTTOM CHARACTERISTICS.
- INDICATE ALL CABLE AREAS AND VESSEL TRAFFIC LANES IN BROKEN PURPLE LINES AND SHOW GENERAL ANCHORAGE AREAS, RESTRICTED AREAS, DISPOSAL AREAS IN BLACK LINES. INDICATE ALL BRIDGES OVER WATERWAYS AND GIVE THEIR APPROPRIATE CLEARANCE.
- COLOR ALL DRYING SANDS EXPOSED AT MLW IN LIGHT GREEN AND COLOR WATER DEPTHS OF LESS THAN 10 FATHOMS IN LIGHT BLUE.
- COLOR THE OUTLINE OF THE SHORES IN YELLOW. MARK PROMINENT BLUFFS OF CLIFFS WITH BLACK HATCHINGS. INDICATE ALL HIGH LAND AREAS (OVER 250') IN LIGHT BROWN OR GRAY.
- INDICATE ALL ESTABLISHED FERRY CROSSINGS BY GREEN LINES.

CAPITOL HILL

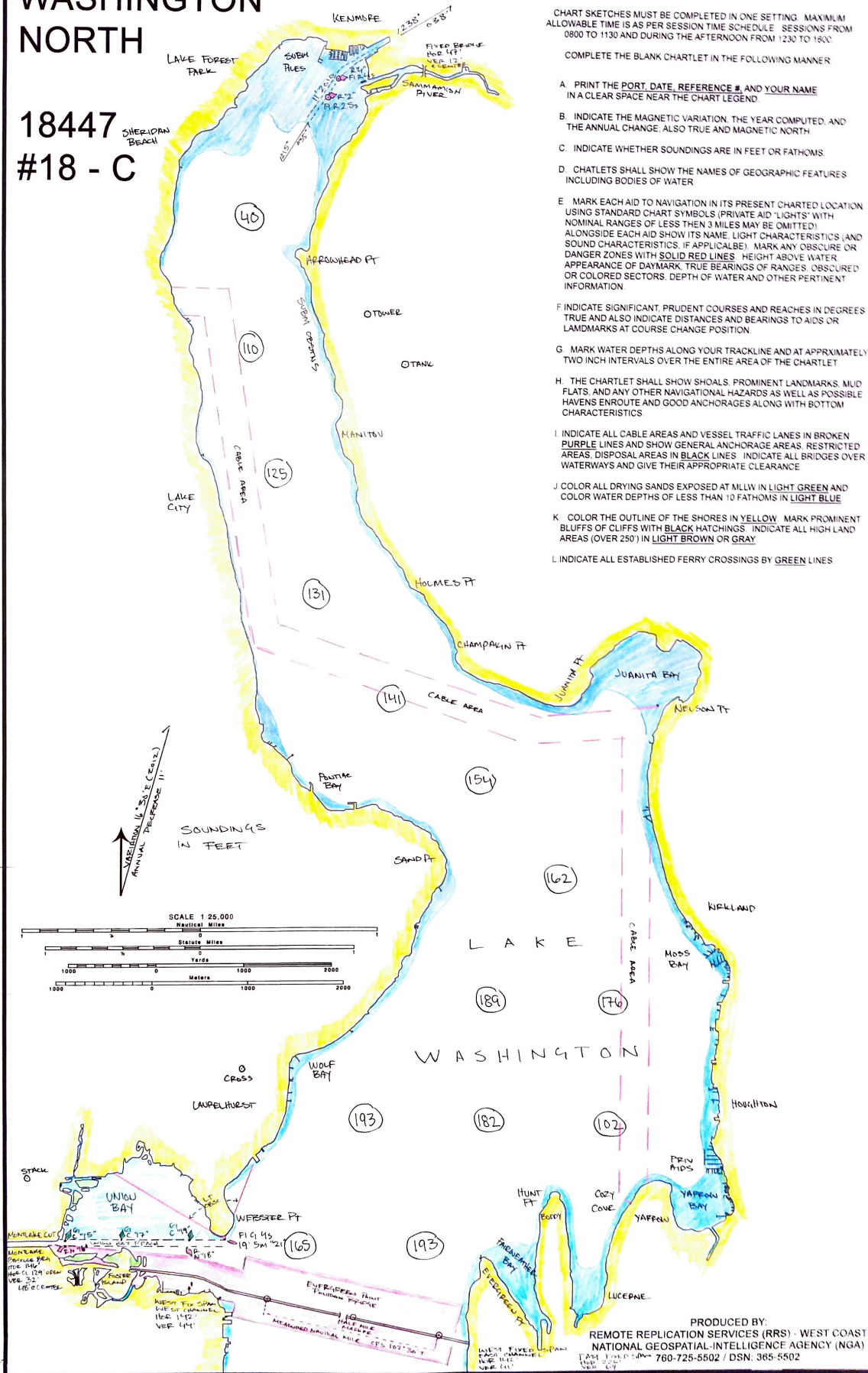
SOUNDINGS IN FEET



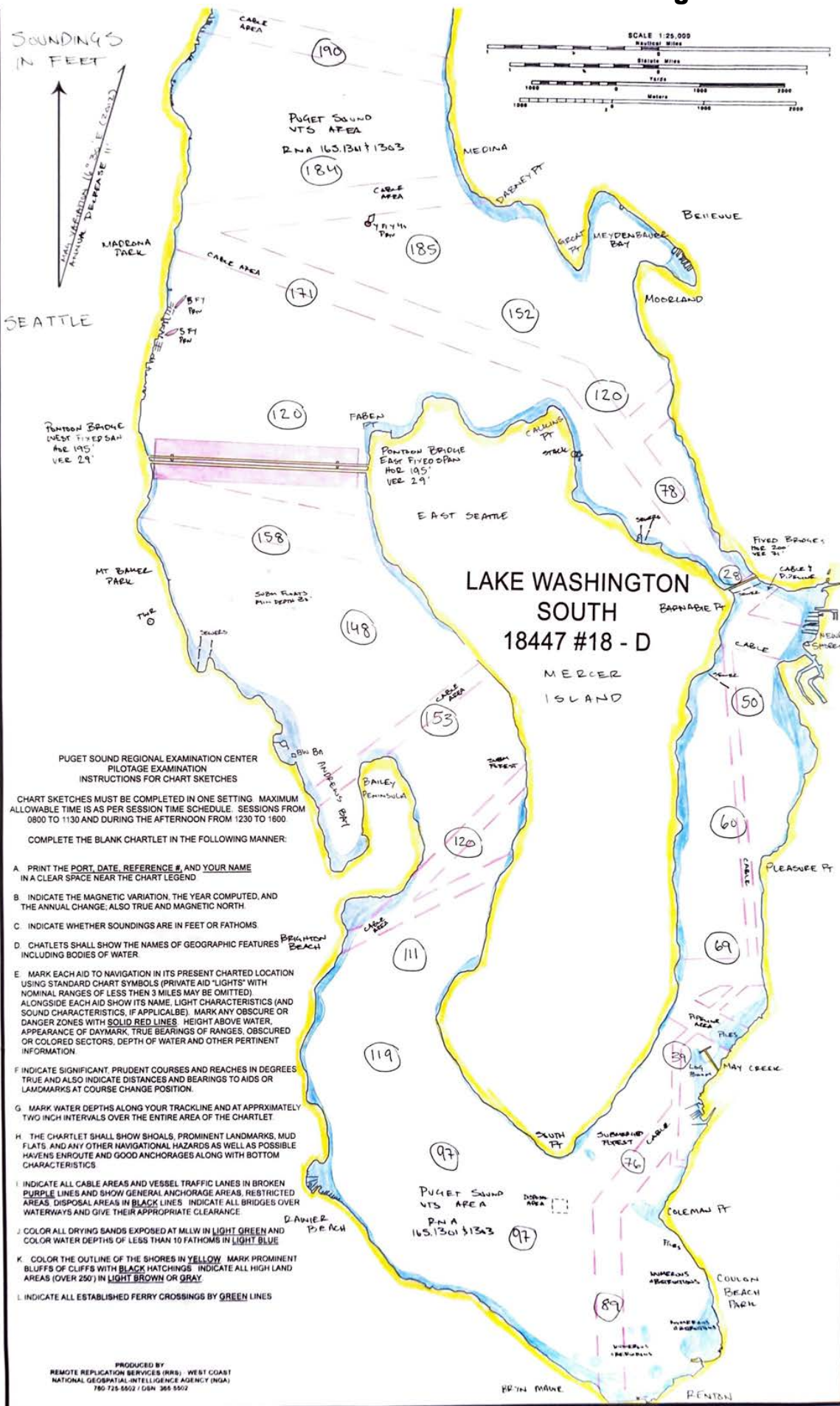
PRODUCED BY:
REMOTE REPLICATION SERVICES (RRS) - WEST COAST
NATIONAL GEOSPATIAL-INTELLIGENCE AGENCY (NGA)
760-725-5502 / DSN: 365-5502

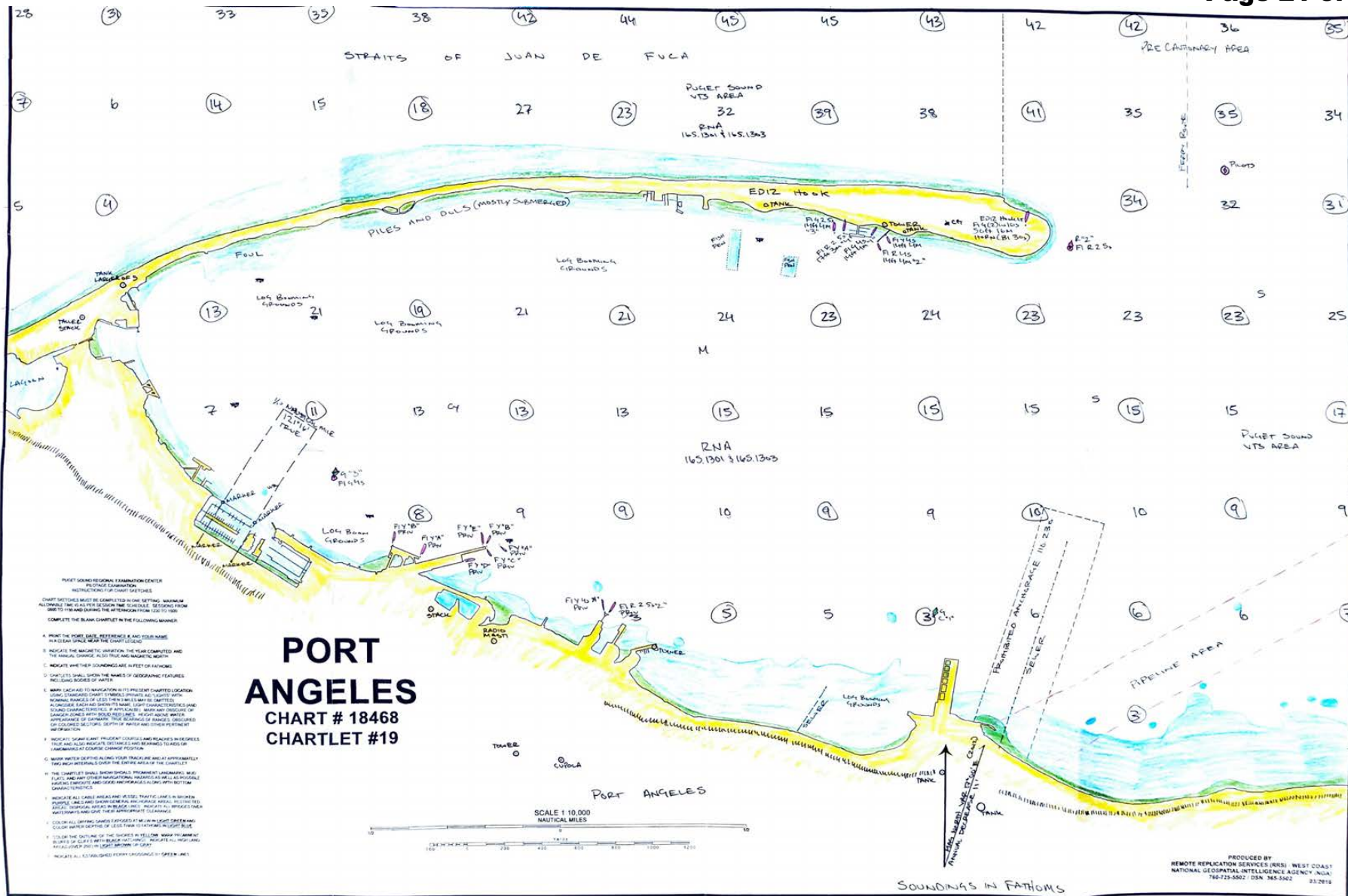
LAKE WASHINGTON NORTH

18447
#18 - C

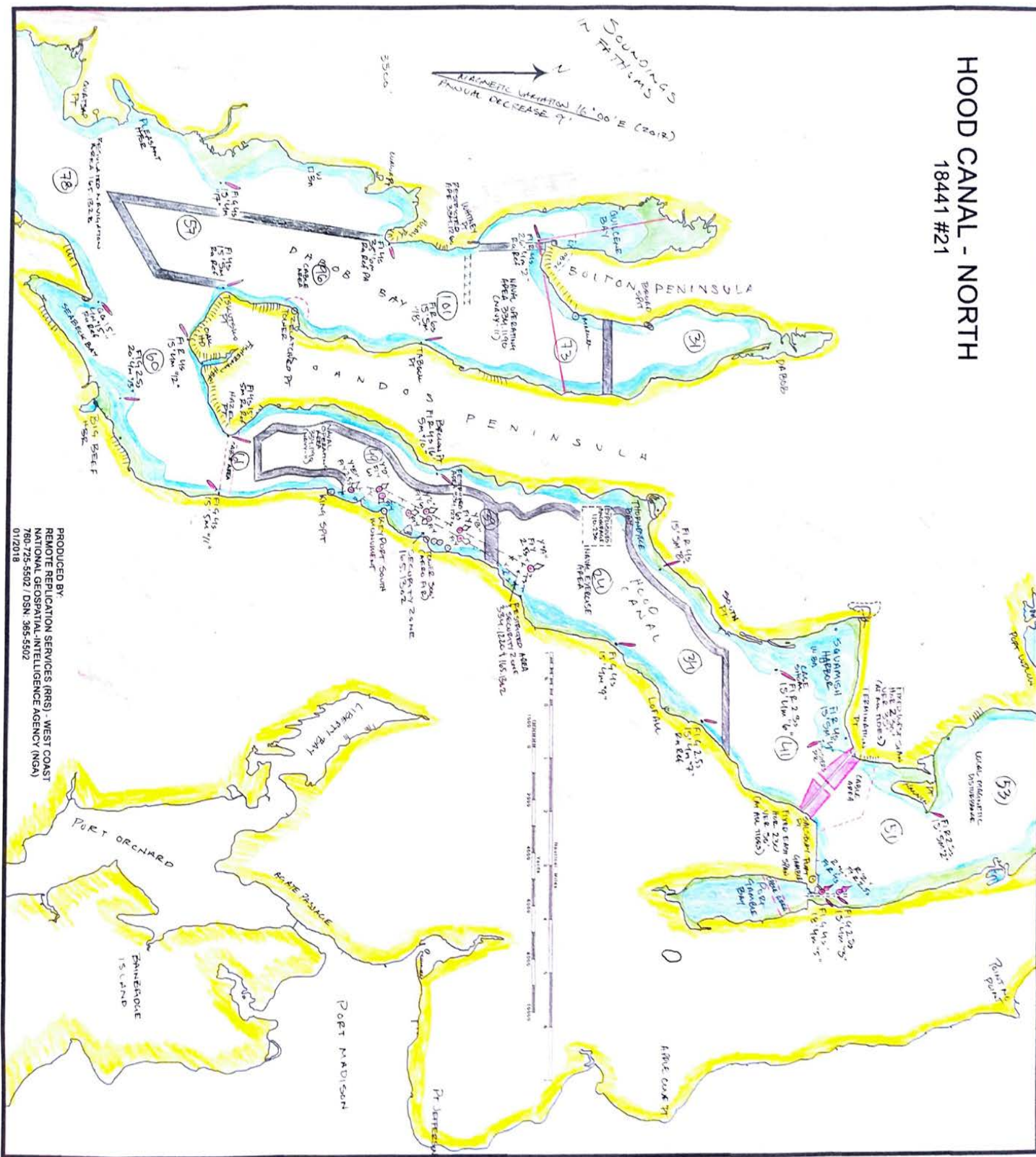


- PUGET SOUND REGIONAL EXAMINATION CENTER
PILOTAGE EXAMINATION
INSTRUCTIONS FOR CHART SKETCHES
- CHART SKETCHES MUST BE COMPLETED IN ONE SETTING. MAXIMUM ALLOWABLE TIME IS AS PER SESSION TIME SCHEDULE. SESSIONS FROM 0800 TO 1130 AND DURING THE AFTERNOON FROM 1230 TO 1800.
- COMPLETE THE BLANK CHARTLET IN THE FOLLOWING MANNER:
- A. PRINT THE PORT, DATE, REFERENCE #, AND YOUR NAME IN A CLEAR SPACE NEAR THE CHART LEGEND.
 - B. INDICATE THE MAGNETIC VARIATION, THE YEAR COMPUTED, AND THE ANNUAL CHANGE. ALSO TRUE AND MAGNETIC NORTH.
 - C. INDICATE WHETHER SOUNDINGS ARE IN FEET OR FATHOMS.
 - D. CHARTLETS SHALL SHOW THE NAMES OF GEOGRAPHIC FEATURES INCLUDING BODIES OF WATER.
 - E. MARK EACH AID TO NAVIGATION IN ITS PRESENT CHARTED LOCATION USING STANDARD CHART SYMBOLS (PRIVATE AID "LIGHTS" WITH NOMINAL RANGES OF LESS THAN 3 MILES MAY BE OMITTED) ALONGSIDE EACH AID SHOW ITS NAME, LIGHT CHARACTERISTICS (AND SOUND CHARACTERISTICS, IF APPLICABLE). MARK ANY OBSCURE OR DANGER ZONES WITH SOLID RED LINES. HEIGHT ABOVE WATER, APPEARANCE OF DAYMARK, TRUE BEARINGS OF RANGES, OBSCURED OR COLORED SECTORS, DEPTH OF WATER AND OTHER PERTINENT INFORMATION.
 - F. INDICATE SIGNIFICANT, PRUDENT COURSES AND REACHES IN DEGREES TRUE AND ALSO INDICATE DISTANCES AND BEARINGS TO AIDS OR LANDMARKS AT COURSE CHANGE POSITION.
 - G. MARK WATER DEPTHS ALONG YOUR TRACKLINE AND AT APPROXIMATELY TWO INCH INTERVALS OVER THE ENTIRE AREA OF THE CHARTLET.
 - H. THE CHARTLET SHALL SHOW SHOALS, PROMINENT LANDMARKS, MUD FLATS, AND ANY OTHER NAVIGATIONAL HAZARDS AS WELL AS POSSIBLE. HAVENS ENROUTE AND GOOD ANCHORAGES ALONG WITH BOTTOM CHARACTERISTICS.
 - I. INDICATE ALL CABLE AREAS AND VESSEL TRAFFIC LANES IN BROKEN PURPLE LINES AND SHOW GENERAL ANCHORAGE AREAS, RESTRICTED AREAS, DISPOSAL AREAS IN BLACK LINES. INDICATE ALL BRIDGES OVER WATERWAYS AND GIVE THEIR APPROPRIATE CLEARANCE.
 - J. COLOR ALL DRYING SANDS EXPOSED AT MLLW IN LIGHT GREEN AND COLOR WATER DEPTHS OF LESS THAN 10 FATHOMS IN LIGHT BLUE.
 - K. COLOR THE OUTLINE OF THE SHORES IN YELLOW. MARK PROMINENT BLUFFS OF CLIFFS WITH BLACK HATCHINGS. INDICATE ALL HIGH LAND AREAS (OVER 250') IN LIGHT BROWN OR GRAY.
 - L. INDICATE ALL ESTABLISHED FERRY CROSSINGS BY GREEN LINES.





HOOD CANAL - NORTH
 18441 #21

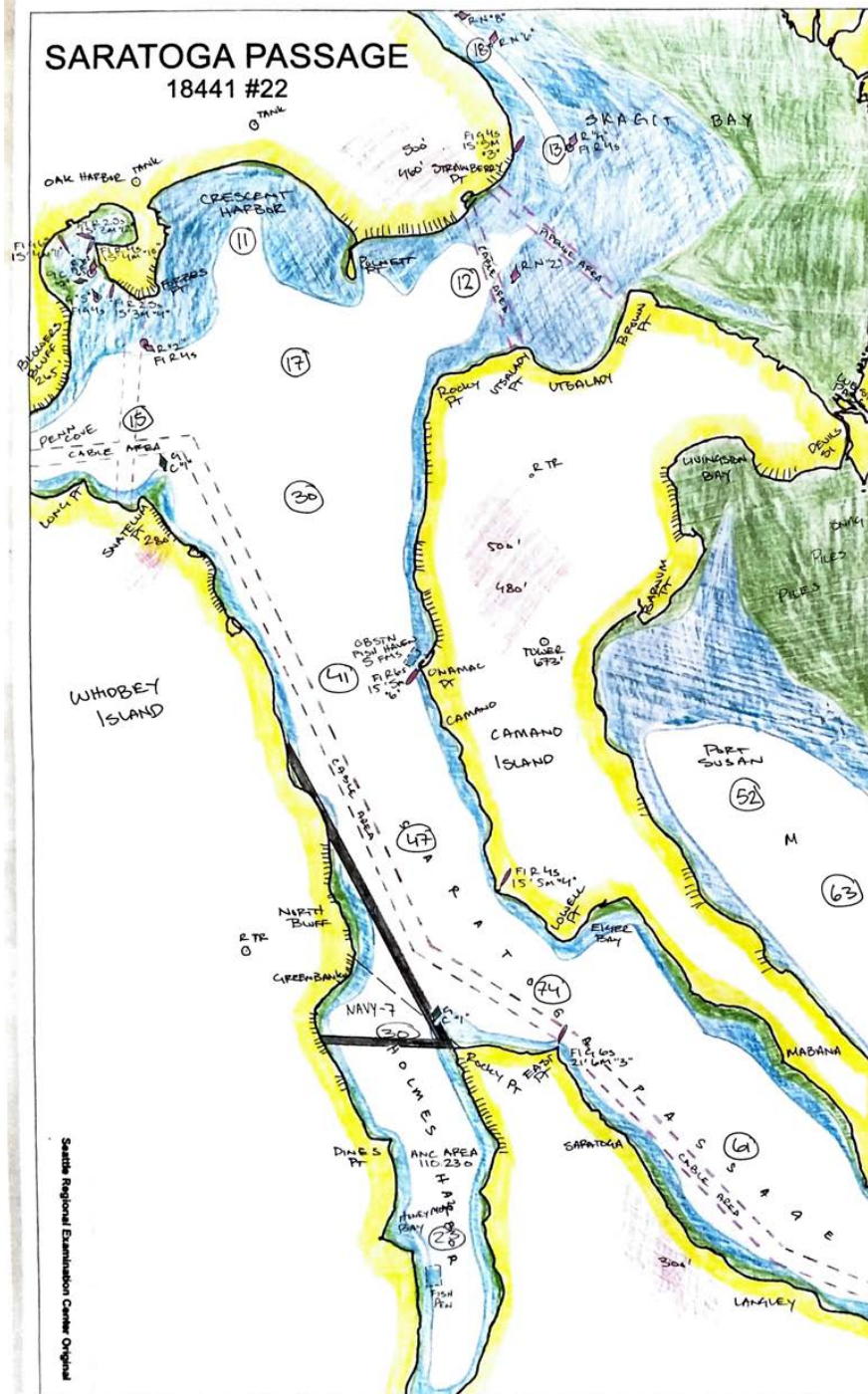


PRODUCED BY:
 REMOTE REPLICATION SERVICES (RRS) - WEST COAST
 NATIONAL GEOSPATIAL-INTELLIGENCE AGENCY (NGA)
 760-725-5502 / DSN 385-5502
 01/2018

AI
 C

SARATOGA PASSAGE

18441 #22



PUGET SOUND REGIONAL EXAMINATION CENTER
PILOTAGE EXAMINATION
INSTRUCTIONS FOR CHART SKETCHES

CHART SKETCHES MUST BE COMPLETED IN ONE SETTING. MAXIMUM ALLOWABLE TIME IS AS PER SESSION TIME SCHEDULE. SESSIONS FROM 0800 TO 1130 AND DURING THE AFTERNOON FROM 1230 TO 1600.

COMPLETE THE BLANK CHARTLET IN THE FOLLOWING MANNER:

- A. PRINT THE PORT, DATE, REFERENCE #, AND YOUR NAME IN A CLEAR SPACE NEAR THE CHART LEGEND.
- B. INDICATE THE MAGNETIC VARIATION, THE YEAR COMPUTED, AND THE ANNUAL CHANGE, ALSO TRUE AND MAGNETIC NORTH.
- C. INDICATE WHETHER SOUNDINGS ARE IN FEET OR FATHOMS.
- D. CHATLETS SHALL SHOW THE NAMES OF GEOGRAPHIC FEATURES INCLUDING BODIES OF WATER.
- E. MARK EACH AID TO NAVIGATION IN ITS PRESENT CHARTED LOCATION USING STANDARD CHART SYMBOLS (PRIVATE AID 'LIGHTS' WITH NOMINAL RANGES OF LESS THAN 3 MILES MAY BE OMITTED) ALONGSIDE EACH AID SHOW ITS NAME, LIGHT CHARACTERISTICS (AND SOUND CHARACTERISTICS, IF APPLICABLE). MARK ANY OBSCURE OR DANGER ZONES WITH SOLID RED LINES. HEIGHT ABOVE WATER, APPEARANCE OF DAYMARK, TRUE BEARINGS OF RANGES, OBSCURED OR COLORED SECTORS, DEPTH OF WATER AND OTHER PERTINENT INFORMATION.
- F. INDICATE SIGNIFICANT, PRUDENT COURSES AND REACHES IN DEGREES TRUE AND ALSO INDICATE DISTANCES AND BEARINGS TO AIDS OR LANDMARKS AT COURSE CHANGE POSITION.
- G. MARK WATER DEPTHS ALONG YOUR TRACKLINE AND AT APPROXIMATELY TWO INCH INTERVALS OVER THE ENTIRE AREA OF THE CHARTLET.
- H. THE CHARTLET SHALL SHOW SHOALS, PROMINENT LANDMARKS, MUD FLATS, AND ANY OTHER NAVIGATIONAL HAZARDS AS WELL AS POSSIBLE HAVENS ENROUTE AND GOOD ANCHORAGES ALONG WITH BOTTOM CHARACTERISTICS.
- I. INDICATE ALL CABLE AREAS AND VESSEL TRAFFIC LANES IN BROKEN PURPLE LINES AND SHOW GENERAL ANCHORAGE AREAS, RESTRICTED AREAS, DISPOSAL AREAS IN BLACK LINES. INDICATE ALL BRIDGES OVER WATERWAYS AND GIVE THEIR APPROPRIATE CLEARANCE.
- J. COLOR ALL DRYING SANDS EXPOSED AT MLLW IN LIGHT GREEN AND COLOR WATER DEPTHS OF LESS THAN 10 FATHOMS IN LIGHT BLUE.
- K. COLOR THE OUTLINE OF THE SHORES IN YELLOW. MARK PROMINENT BLUFFS OF CLIFFS WITH BLACK HATCHINGS. INDICATE ALL HIGH LAND AREAS (OVER 250') IN LIGHT BROWN OR GRAY.
- L. INDICATE ALL ESTABLISHED FERRY CROSSINGS BY GREEN LINES.

SCALE 1:80,000



MAGN. VARIATION 16.5° (2000)
ANNUAL CHANGE 0.1°

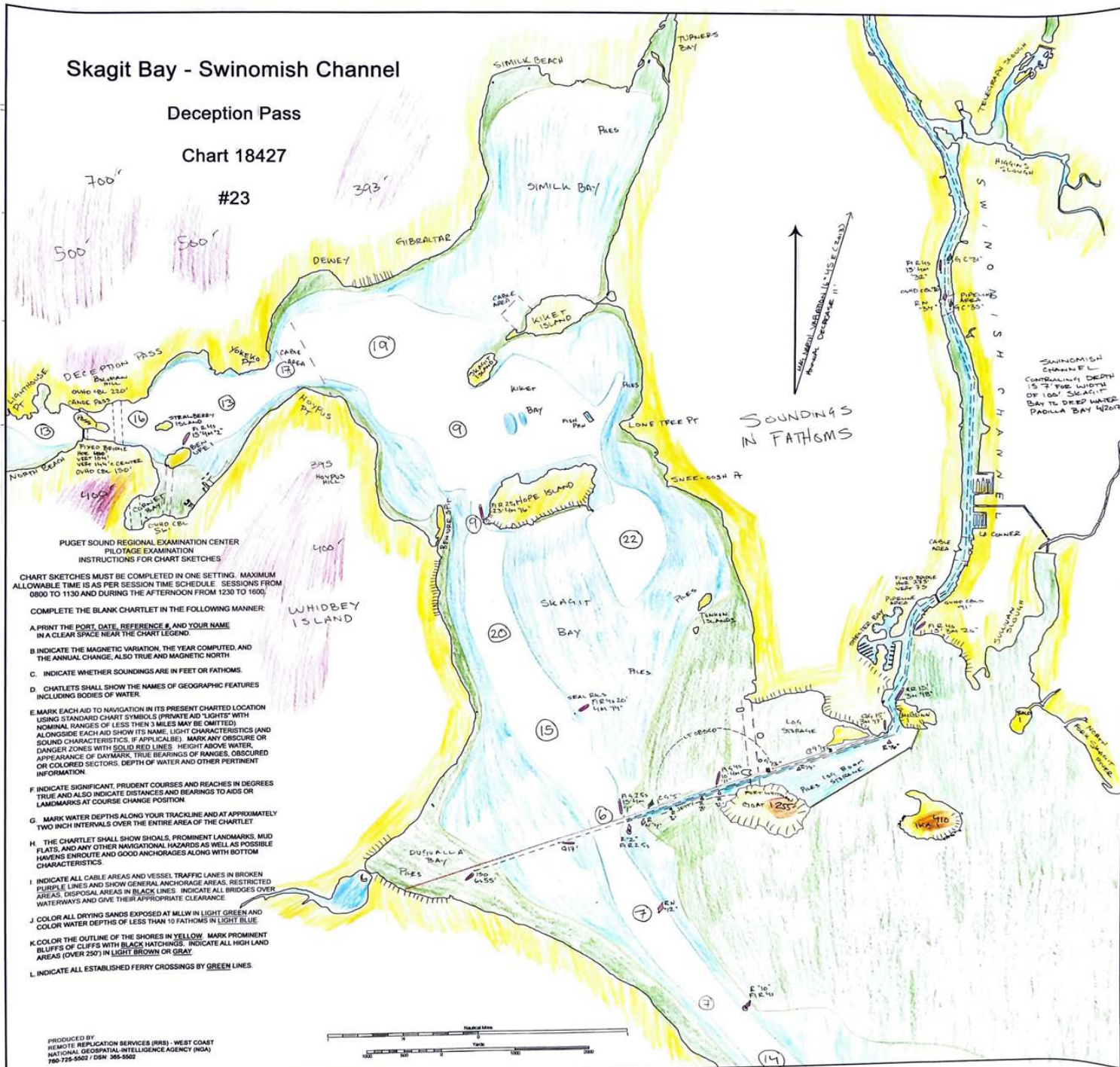
SOUNDINGS IN
FATHOMS

Skagit Bay - Swinomish Channel

Deception Pass

Chart 18427

#23



- PUGET SOUND REGIONAL EXAMINATION CENTER
PILOTAGE EXAMINATION
INSTRUCTIONS FOR CHART SKETCHES
- CHART SKETCHES MUST BE COMPLETED IN ONE SETTING. MAXIMUM ALLOWABLE TIME IS AS PER SESSION TIME SCHEDULE. SESSIONS FROM 0800 TO 1130 AND DURING THE AFTERNOON FROM 1230 TO 1600.
- COMPLETE THE BLANK CHARTLET IN THE FOLLOWING MANNER:
- PRINT THE PORT, DATE, REFERENCE #, AND YOUR NAME IN A CLEAR SPACE NEAR THE CHART LEGEND.
 - INDICATE THE MAGNETIC VARIATION, THE YEAR COMPUTED, AND THE ANNUAL CHANGE, ALSO TRUE AND MAGNETIC NORTH.
 - INDICATE WHETHER SOUNDINGS ARE IN FEET OR FATHOMS.
 - CHARTLETS SHALL SHOW THE NAMES OF GEOGRAPHIC FEATURES INCLUDING BODIES OF WATER.
 - MARK EACH AID TO NAVIGATION IN ITS PRESENT CHARTED LOCATION USING STANDARD CHART SYMBOLS (PRIVATE AID "LIGHTS" WITH NOMINAL RANGES OF LESS THAN 3 MILES MAY BE OMITTED) ALONGSIDE EACH AID SHOW ITS NAME, LIGHT CHARACTERISTICS (AND SOUND CHARACTERISTICS, IF APPLICABLE). MARK ANY OBSCURE OR DANGER ZONES WITH SOLID RED LINES. HEIGHT ABOVE WATER, OR COLORED SECTORS, DEPTH OF WATER AND OTHER PERTINENT INFORMATION.
 - INDICATE SIGNIFICANT, PRUDENT COURSES AND REACHES IN DEGREES TRUE AND ALSO INDICATE DISTANCES AND BEARINGS TO AIDS OR LANDMARKS AT COURSE CHANGE POSITION.
 - MARK WATER DEPTHS ALONG YOUR TRACKLINE AND AT APPROXIMATELY TWO INCH INTERVALS OVER THE ENTIRE AREA OF THE CHARTLET.
 - THE CHARTLET SHALL SHOW SHOALS, PROMINENT LANDMARKS, MUD FLATS, AND ANY OTHER NAVIGATIONAL HAZARDS AS WELL AS POSSIBLE CHANNELS, ENROUTE AND GOOD ANCHORAGES ALONG WITH BOTTOM CHARACTERISTICS.
 - INDICATE ALL CABLE AREAS AND VESSEL TRAFFIC LANES IN BROWN PURPLE LINES AND SHOW GENERAL ANCHORAGE AREAS, RESTRICTED AREAS, DISPOSAL AREAS IN BLACK LINES. INDICATE ALL BRIDGES OVER WATERWAYS AND GIVE THEIR APPROPRIATE CLEARANCE.
 - COLOR ALL DRYING SANDS EXPOSED AT MLW IN LIGHT GREEN AND COLOR WATER DEPTHS OF LESS THAN 10 FATHOMS IN LIGHT BLUE.
 - COLOR THE OUTLINE OF THE SHORES IN YELLOW. MARK PROMINENT BLUFFS OF CLIFFS WITH BLACK HATCHINGS. INDICATE ALL HIGH LAND AREAS (OVER 250') IN LIGHT BROWN OR GRAY.
 - INDICATE ALL ESTABLISHED FERRY CROSSINGS BY GREEN LINES.

PRODUCED BY
REMOTE REPLICATION SERVICES (RRS) - WEST COAST
NATIONAL GEOGRAPHIC-INTELLIGENCE AGENCY (NGA)
780-728-5522 / DSN: 385-5502



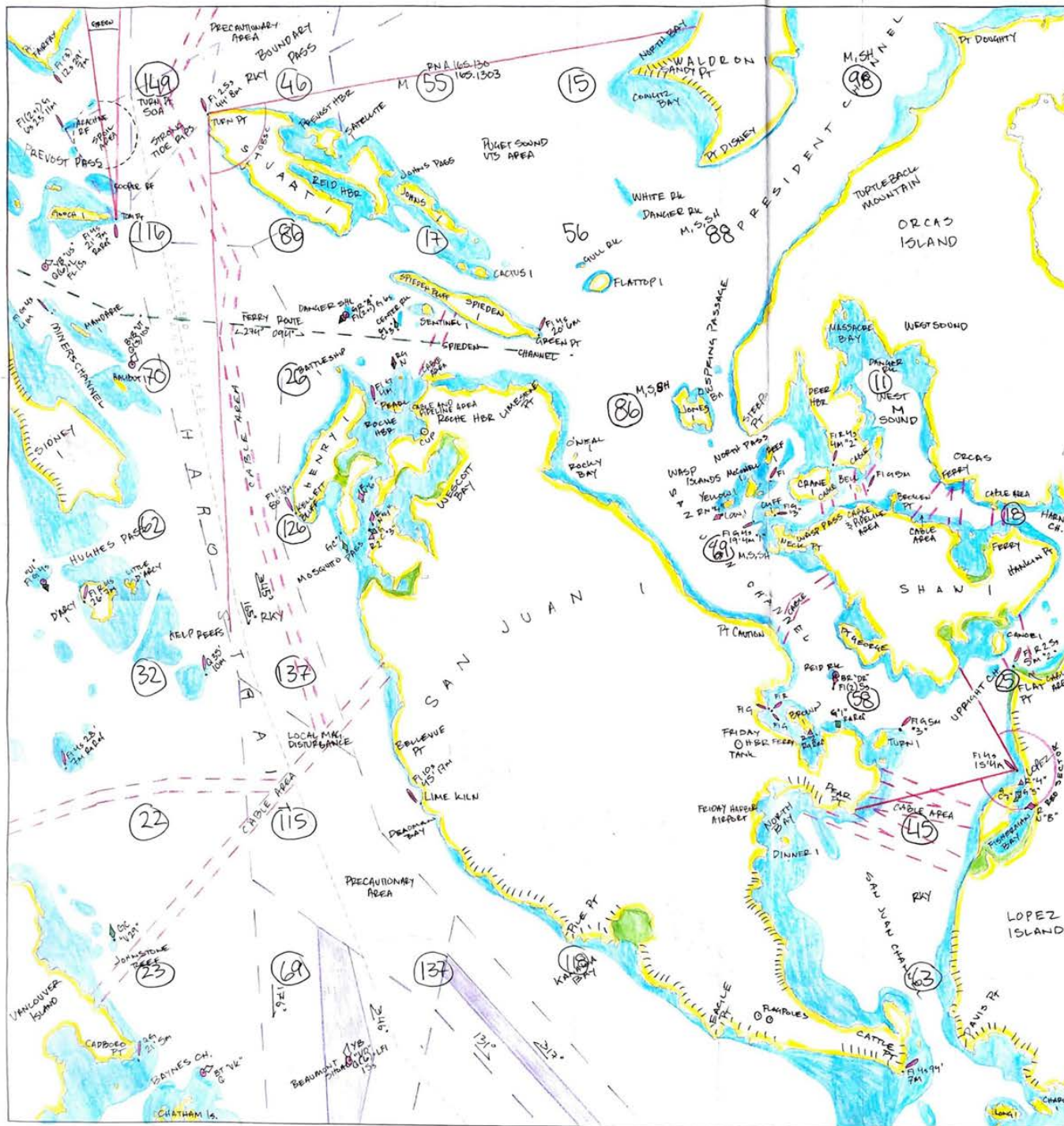
Haro Strait 18421 #24

PUGET SOUND REGIONAL EXAMINATION CENTER
PILOTAGE EXAMINATION
INSTRUCTIONS FOR CHART SKETCHES

CHART SKETCHES MUST BE COMPLETED IN ONE SETTING. MAXIMUM ALLOWABLE TIME IS AS PER SESSION TIME SCHEDULE. SESSIONS FROM 0800 TO 1130 AND DURING THE AFTERNOON FROM 1230 TO 1600

COMPLETE THE BLANK CHARTLET IN THE FOLLOWING MANNER:

- PRINT THE PORT, DATE, REFERENCE #, AND YOUR NAME IN A CLEAR SPACE NEAR THE CHART LEGEND.
- INDICATE THE MAGNETIC VARIATION, THE YEAR COMPUTED, AND THE ANNUAL CHANGE, ALSO TRUE AND MAGNETIC NORTH.
- INDICATE WHETHER SOUNDINGS ARE IN FEET OR FATHOMS.
- CHARTLETS SHALL SHOW THE NAMES OF GEOGRAPHIC FEATURES INCLUDING BODIES OF WATER.
- MARK EACH AID TO NAVIGATION IN ITS PRESENT CHARTED LOCATION USING STANDARD CHART SYMBOLS (PRIVATE AID "LIGHTS" WITH NOMINAL RANGES OF LESS THAN 3 MILES MAY BE OMITTED). ALONGSIDE EACH AID SHOW ITS NAME, LIGHT CHARACTERISTICS (SOUND CHARACTERISTICS, IF APPLICABLE). MARK ANY OBSCURE DANGER ZONES WITH SOLID RED LINES. HEIGHT ABOVE WATER, APPEARANCE OF DAYMARK, TRUE BEARINGS OF RANGES, OBSCURE OR COLORED SECTORS, DEPTH OF WATER AND OTHER PERTINENT INFORMATION.
- INDICATE SIGNIFICANT, PRUDENT COURSES AND REACHES IN DEGREE TRUE AND ALSO INDICATE DISTANCES AND BEARINGS TO AIDS OR LANDMARKS AT COURSE CHANGE POSITION.
- MARK WATER DEPTHS ALONG YOUR TRACKLINE AND AT APPROXIMATE TWO INCH INTERVALS OVER THE ENTIRE AREA OF THE CHARTLET.
- THE CHARTLET SHALL SHOW SHOALS, PROMINENT LANDMARKS, FLATS, AND ANY OTHER NAVIGATIONAL HAZARDS AS WELL AS POSSIBLE HAVENS ENROUTE AND GOOD ANCHORAGES ALONG WITH BOTTOM CHARACTERISTICS.
- INDICATE ALL CABLE AREAS AND VESSEL TRAFFIC LANES IN BROKEN PURPLE LINES AND SHOW GENERAL ANCHORAGE AREAS, RESTRICTED AREAS, DISPOSAL AREAS IN BLACK LINES. INDICATE ALL BRIDGES OR WATERWAYS AND GIVE THEIR APPROPRIATE CLEARANCE.
- COLOR ALL DRYING SANDS EXPOSED AT MLLW IN LIGHT GREEN AND COLOR WATER DEPTHS OF LESS THAN 10 FATHOMS IN LIGHT BLUE.
- COLOR THE OUTLINE OF THE SHORES IN YELLOW. MARK PROMINENT BLUFFS OF CLIFFS WITH BLACK HATCHINGS. INDICATE ALL HIGH LAND AREAS (OVER 250') IN LIGHT BROWN OR GRAY.
- INDICATE ALL ESTABLISHED FERRY CROSSINGS BY GREEN LINES.



N
↑
MAGNETIC VARIATION 16.1° E (2017)
ANNUAL DECREASE 9'

SOUND
IN FATH