

Washington Labor Market Update

Utilities and Transportation Commission
COVID-19 Equity, Customer Communications and
Outreach Technical Workshop
June 15, 2022

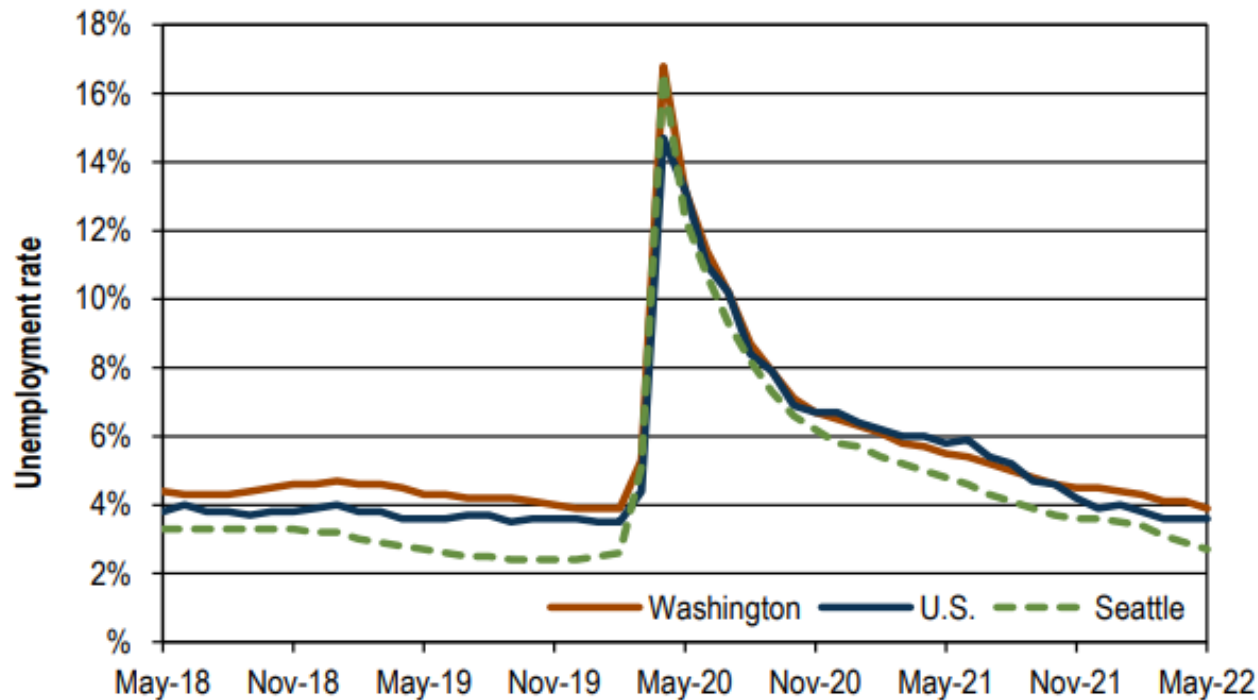
Anneliese Vance-Sherman, Ph.D.
Regional Labor Economist
Washington Employment Security Department
Anneliese.Vance-Sherman@esd.wa.gov

In May 2022, Washington's unemployment rate was 3.9 percent

Unemployment rates, seasonally adjusted

U.S., Washington and Seattle, May 2018 through May 2022

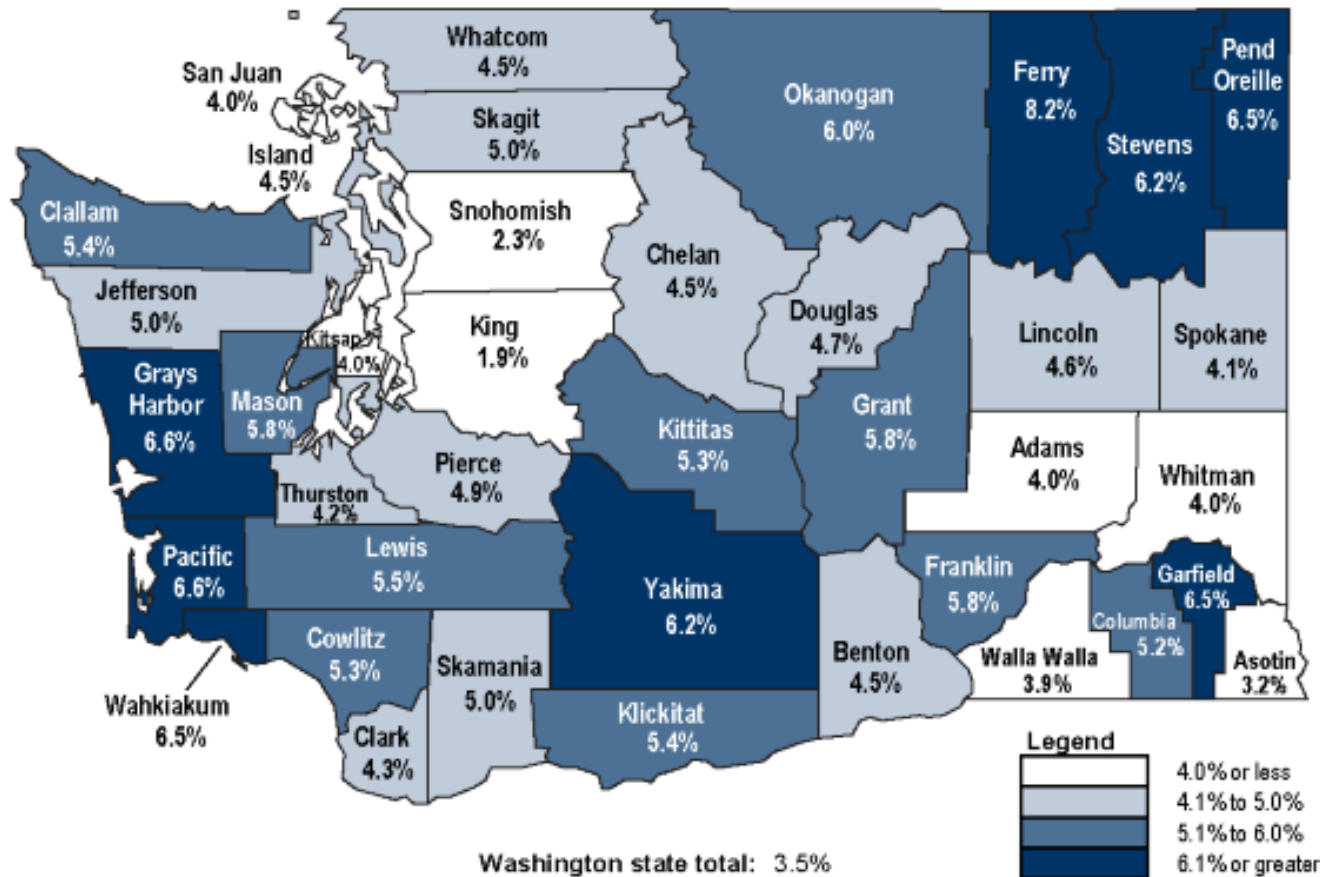
Source: Employment Security Department/DATA Division; U.S. Bureau of Labor Statistics, Local Area Unemployment Statistics



The unemployment rate tells us how well people are connecting with work

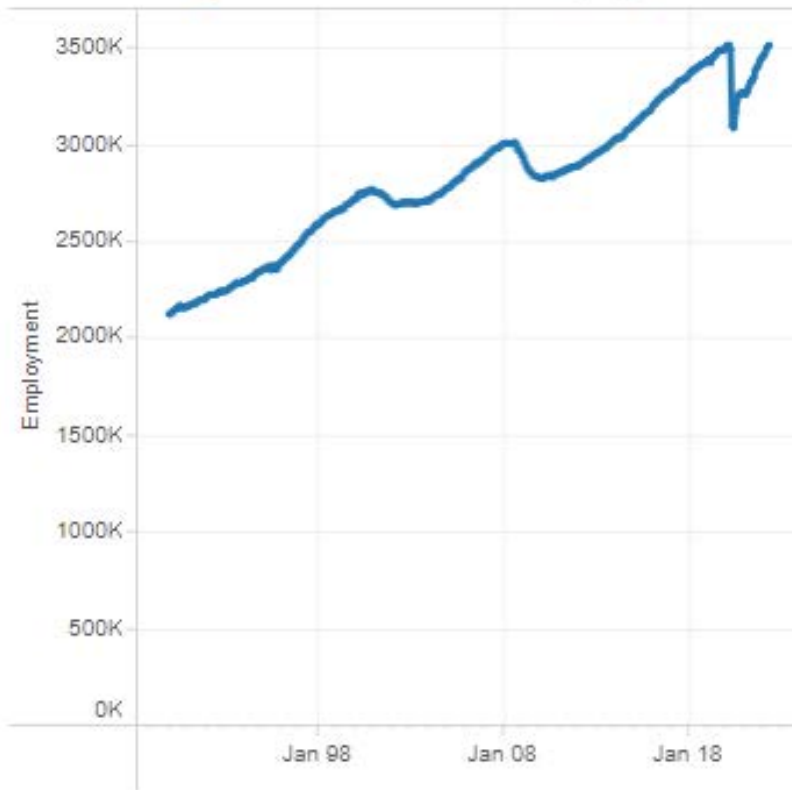
April 2022

County unemployment rates, not seasonally adjusted

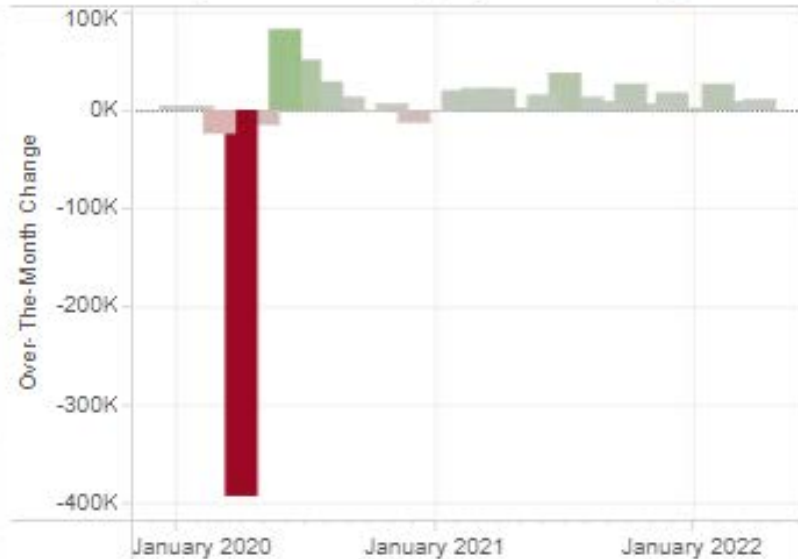


Washington's economy added 12,300 jobs in April 2022

Washington state nonfarm employment



Monthly nonfarm employment change*



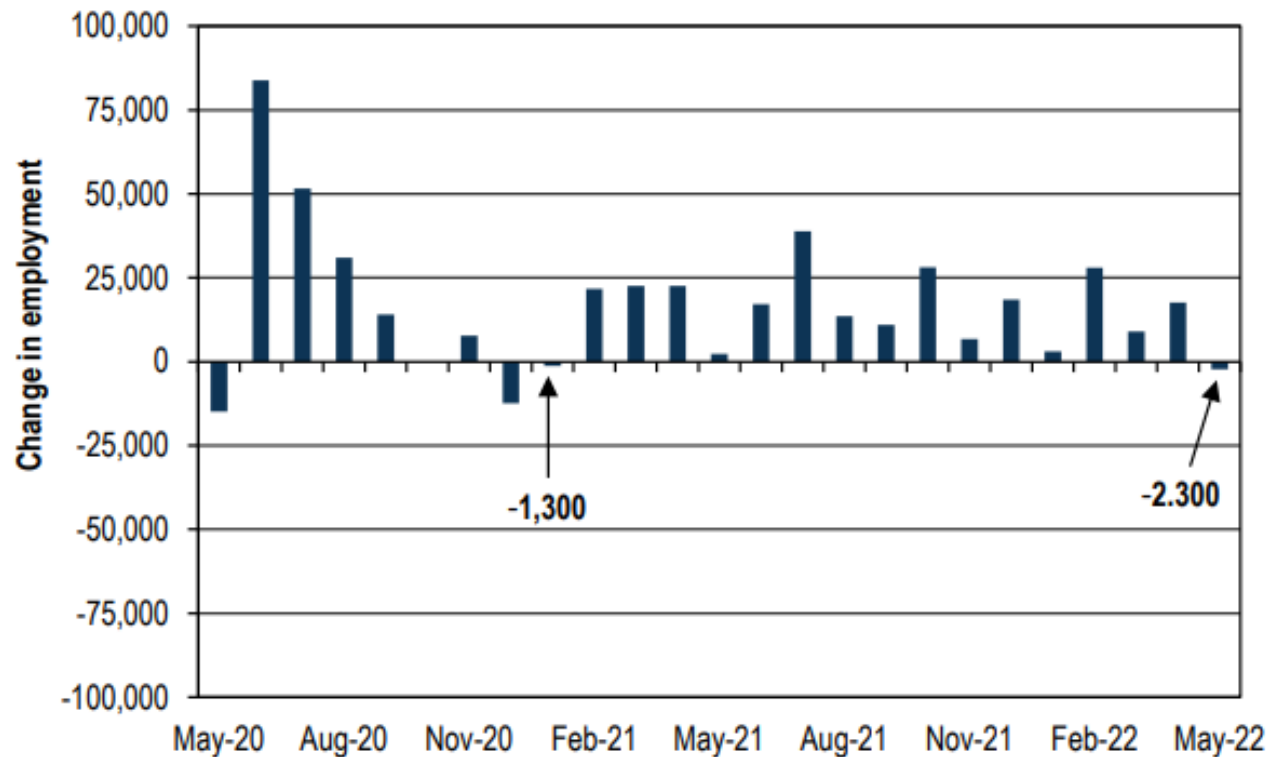
*Due to the COVID-19 outbreak there was a significant decrease in jobs in April 2020 for nonfarm employment that does not lend itself to be graphed with the historical data. Therefore, we have reduced the over-the-month employment change figure to the past few months to visualize

In May 2022, Washington payrolls dipped by 2,300

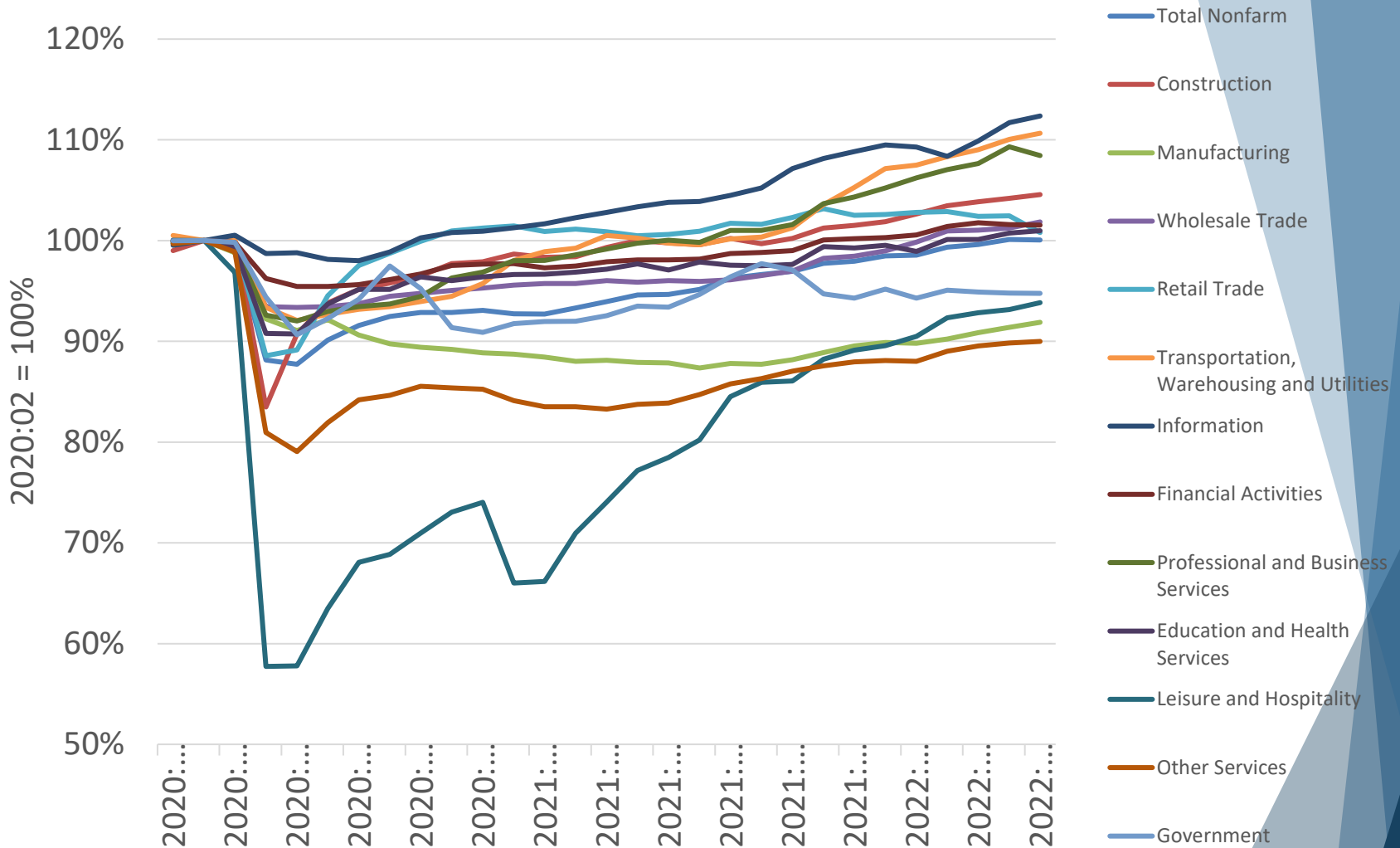
Monthly employment change, seasonally adjusted

Washington state, May 2020 through May 2022

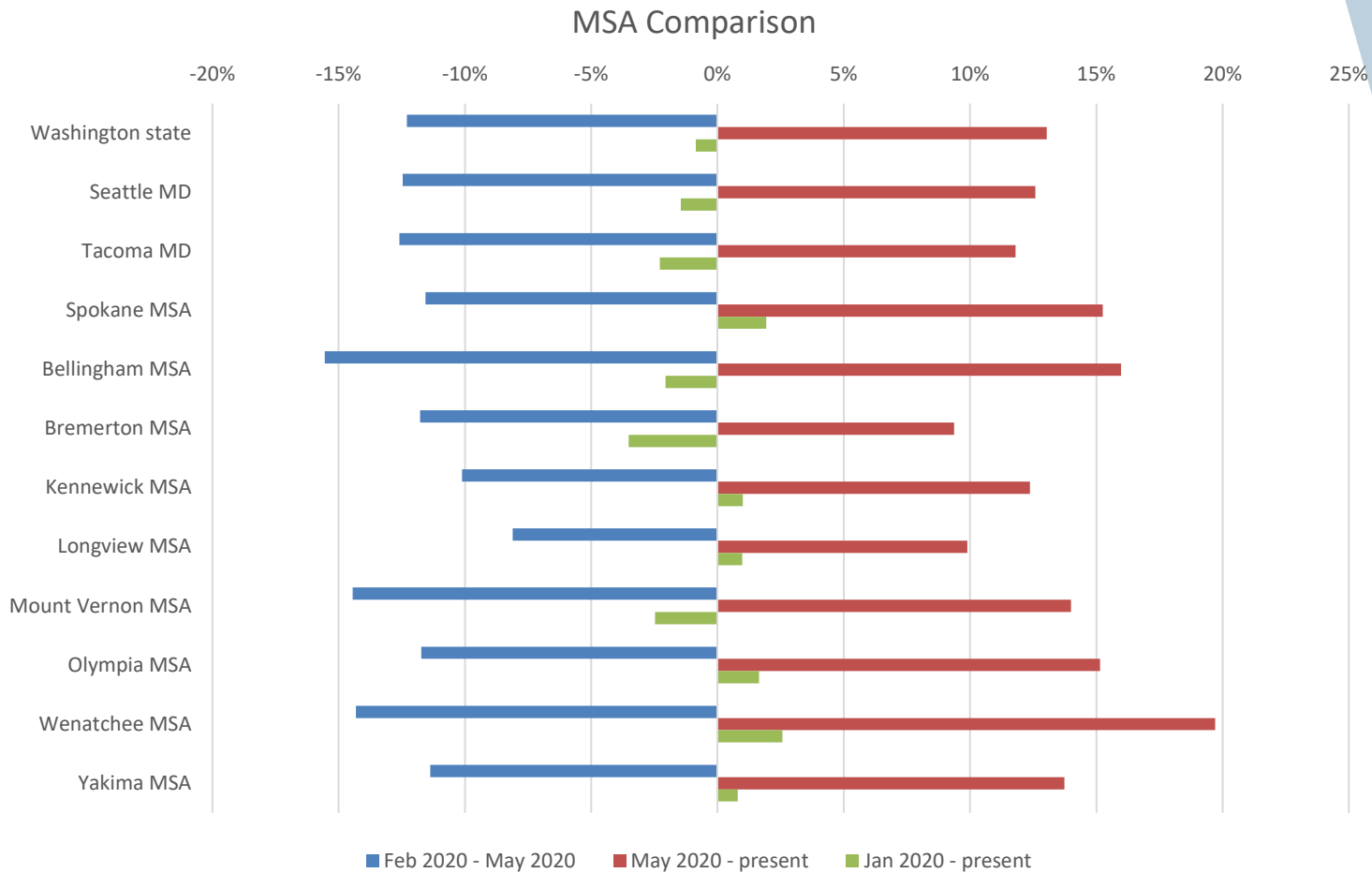
Source: Employment Security Department/DATA Division; U.S. Bureau of Labor Statistics, Current Employment Statistics



Statewide, most sectors are recovering



Recovery has been geographically uneven



ESD Labor Market Information

- ▶ [Esd.wa.gov/labormarketinfo](https://esd.wa.gov/labormarketinfo)
 - ▶ Monthly Employment Report
 - ▶ Industry employment
 - ▶ Labor force and unemployment
 - ▶ Occupational employment and wages
 - ▶ Employment projections
 - ▶ Regional labor economist contact information