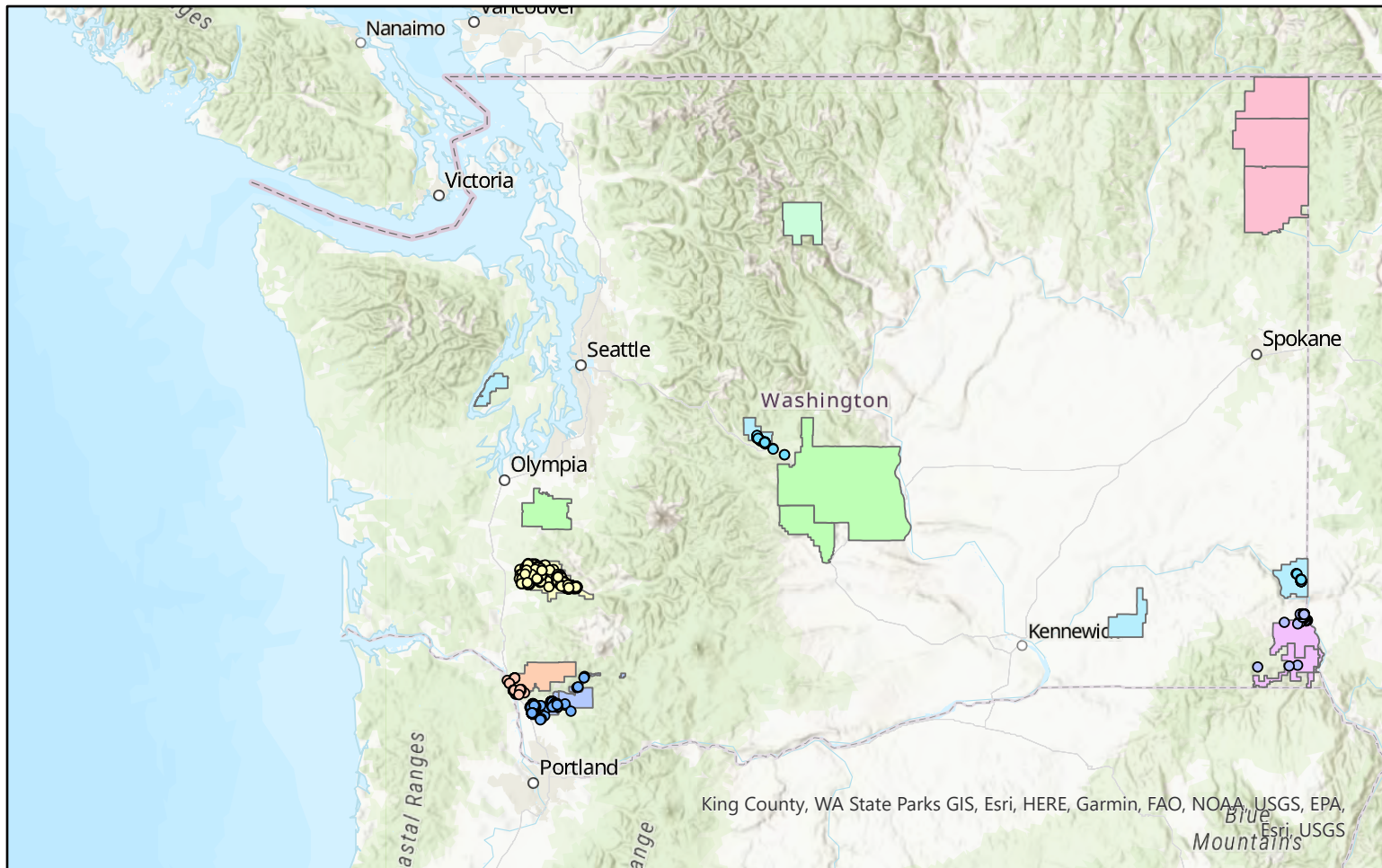


SUSF Criterion Two Supported Broadband Locations



Deployed Broadband FY2021

Company

- Asotin
- Inland
- Kalama
- Lewis River
- McDaniel

Study Area

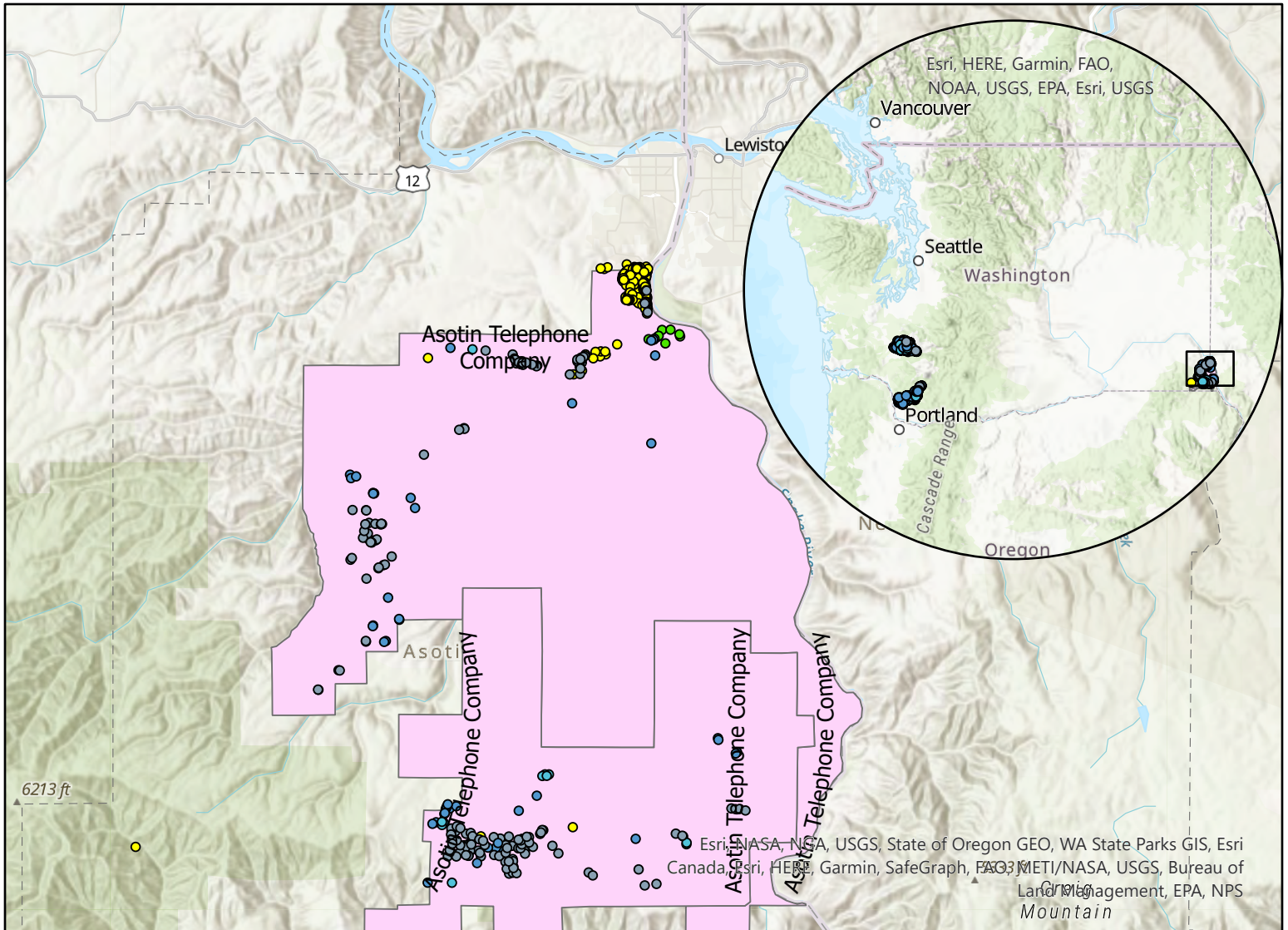
- Asotin Telephone Company
- Consolidated Communications of WA Co., LLC
- Inland Telephone Company
- Kalama Telephone Company
- Lewis River Telephone Company, Inc.
- McDaniel Telephone Company
- Pend Oreille Telephone Company
- Westgate Communications LLC

Eight Companies have petitioned the UTC for Support under eligibility criterion two. Each company has committed to deploying 25/3 Mbps (or faster) broadband speed capability consistent with UTC Broadband Buildout requirement by June 30, 2024.

Three companies (Consolidated, Pend Oreille, and Westgate) do not have locations for the 2021 FY.

- Consolidated expects to deploy broadband to a significant number of its UTC Broadband Buildout requirement during 2022 fiscal year.
- Pend Oreille has deployed 25/3 Mbps to all of the locations as required by the UTC Broadband Buildout requirement. However, they do not have the geolocated information and will provide it by the 2022 fiscal year report.
- Westgate does not have any locations with 25/3 Mbps capability due to satellite backhaul limitations. However, the company will have increased satellite backhaul during the 2022 fiscal year and will deploy 25/3 Mbps to a significant number of its required locations during this time.

Asotin's SUSF Supported Broadband Locations



Asotin Deployed FY2021

Broadband Speed

- 25/3 Mbps
- 25/5 Mbps

Asotin Study Area

COMPANY

- Asotin Telephone Company

TDS FUSF Locations*

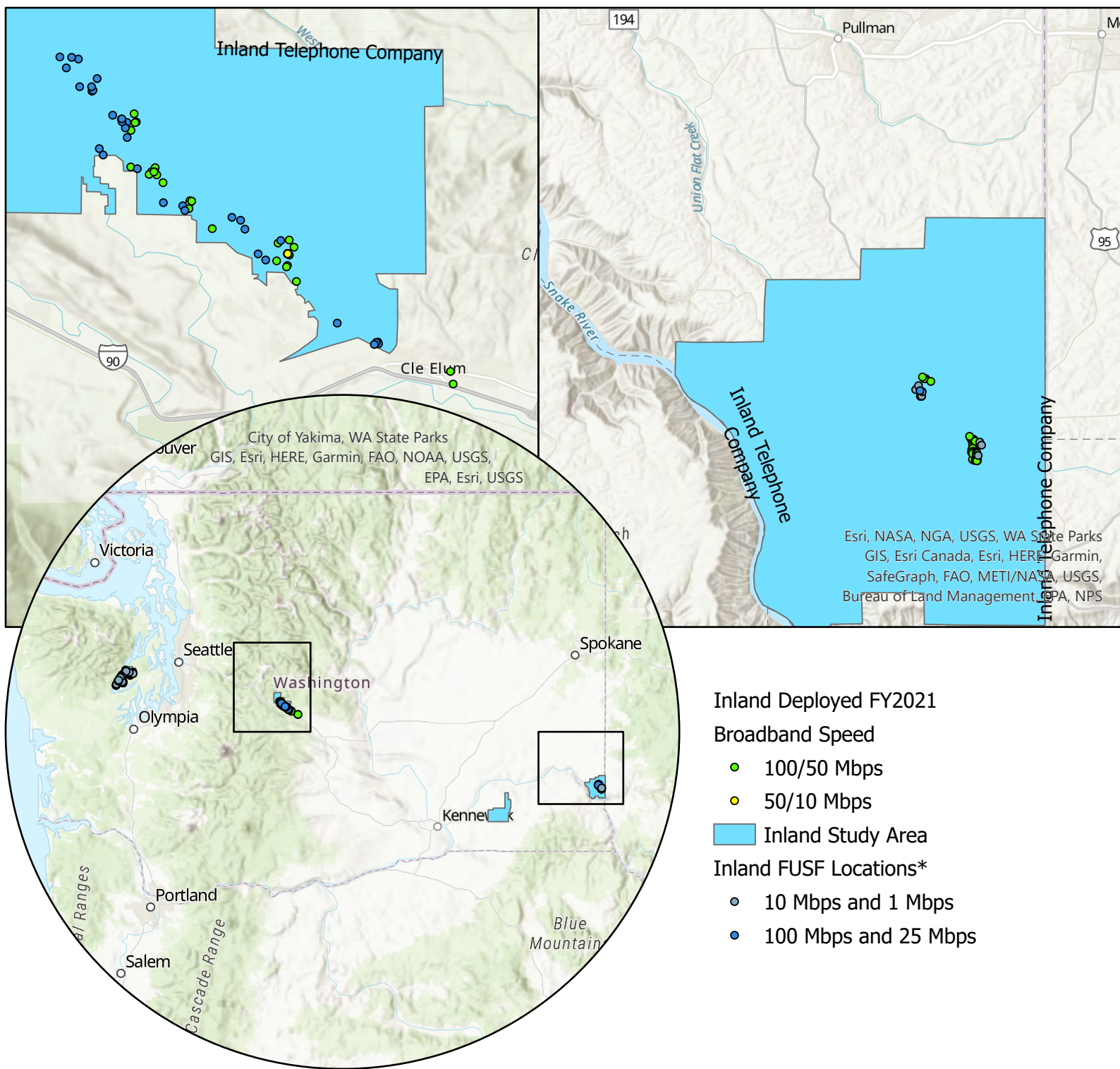
- 10 Mbps and 1 Mbps
- 100 Mbps and 25 Mbps
- 25 Mbps and 3 Mbps
- 25 Mbps and 5 Mbps

Asotin has a SUSF UTC Broadband Buildout requirement of 26 locations by June 30, 2024. Asotin has provided coordinates for 326 locations where it has deployed 25/3 Mbps (or faster) broadband speed capability during the 2021 fiscal year. This consist of eight locations with 25/3 Mbps capability and 318 with 25/5 Mbps capability.

As this is not a grant program, these locations are not explicitly funded with SUSF support, however, SUSF support helps make it possible for these companies to deploy broadband.

*Federal Universal Service Funds (FUSF) locations are a requirement of receiving federal high-cost support.

Inland's SUSF Supported Broadband Locations

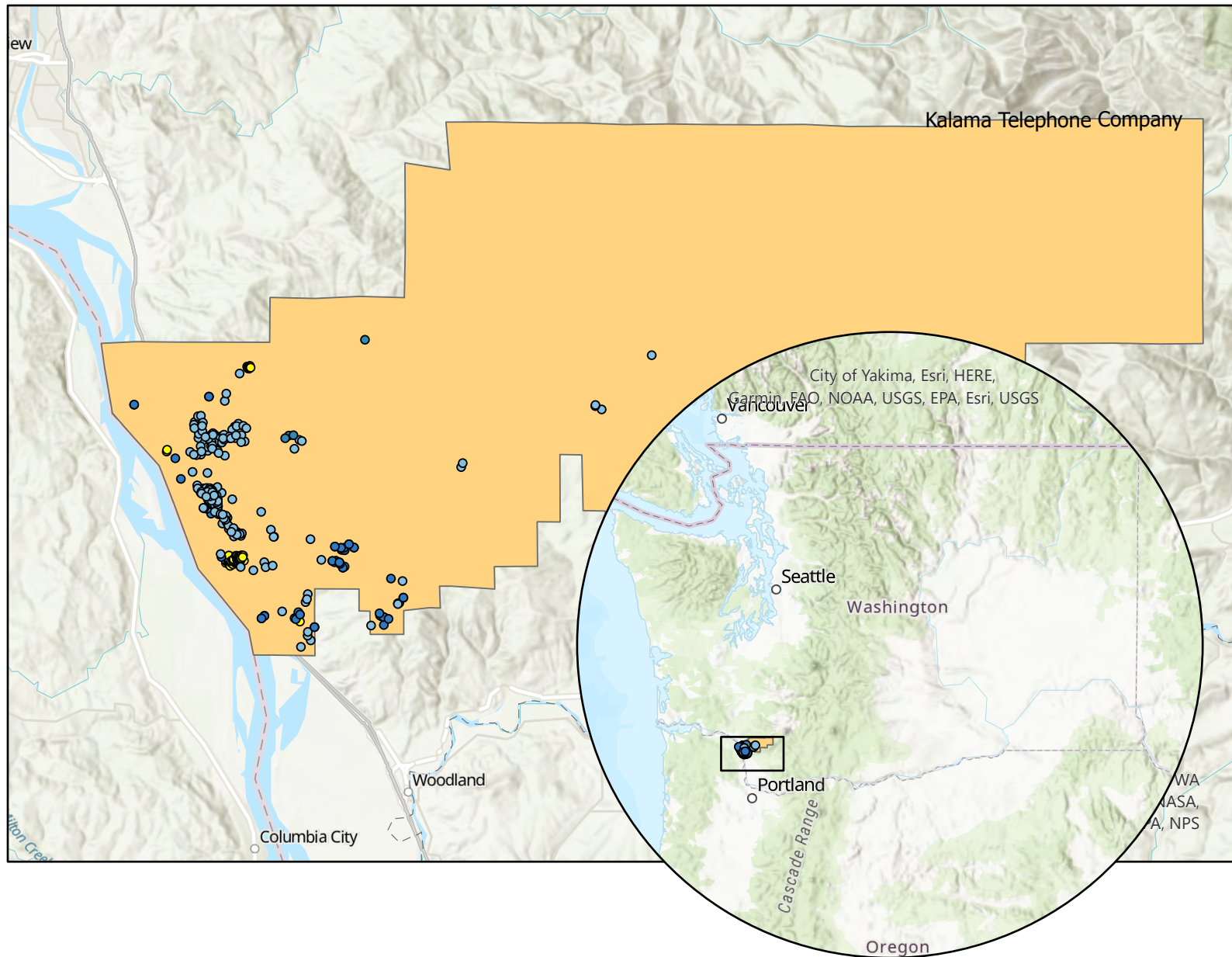


Inland has a SUSF UTC Broadband Buildout requirement of 254 locations by June 30, 2024. Inland has provided coordinates for 108 locations where it has deployed 25/3 Mbps (or faster) broadband speed capability during the 2021 fiscal year. This consists of 31 locations with 50/10 Mbps capability and 77 with 100/50 Mbps capability.

As this is not a grant program, these locations are not explicitly funded with SUSF support, however, SUSF support helps make it possible for these companies to deploy broadband.

*Federal Universal Service Funds (FUSF) locations are a requirement of receiving federal high-cost support.

Kalama's SUSF Supported Broadband Locations



Kalama Deployed FY2021

Broadband Speed

- 100/25 Mbps

Kalama Study Area

Kalama FUSF Locations*

Download and Upload Speed

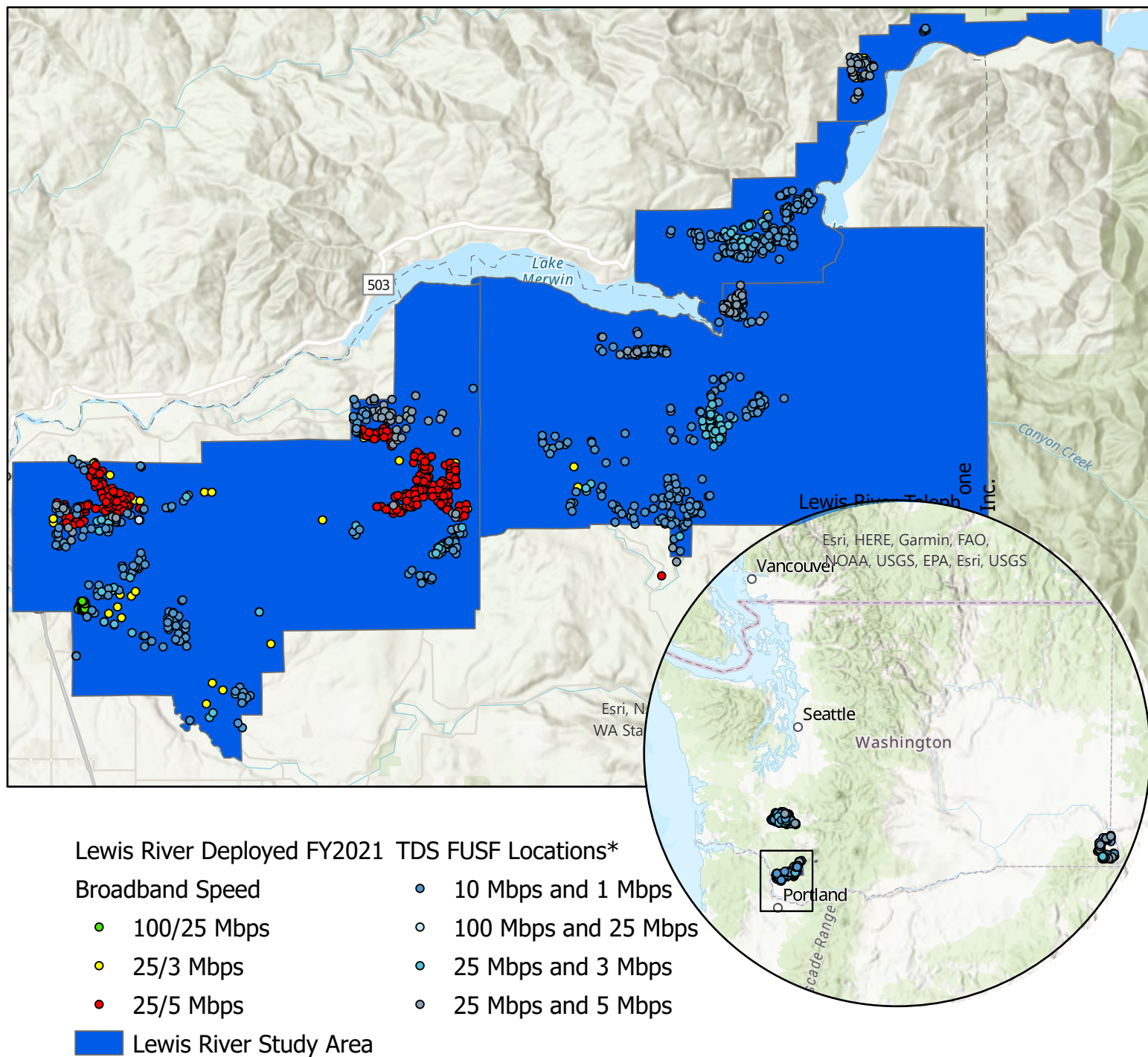
- 10 Mbps and 1 Mbps
- 100 Mbps and 25 Mbps
- 4 Mbps and 1 Mbps

Kalama has a SUSF UTC Broadband Buildout requirement of 122 locations by June 30, 2024. Kalama has provided coordinates for 71 locations where it has deployed broadband to during the 2021 fiscal year. The Company deployed to an additional 48 locations do not have coordinates at this time. All locations have 100/25 Mbps broadband speed capability. Coordinates will be provided during the next company report.

As this is not a grant program, these locations are not explicitly funded with SUSF support, however, SUSF support helps make it possible for these companies to deploy broadband.

*Federal Universal Service Funds (FUSF) locations are a requirement of receiving federal high-cost support.

Lewis River's SUSF Supported Broadband Locations

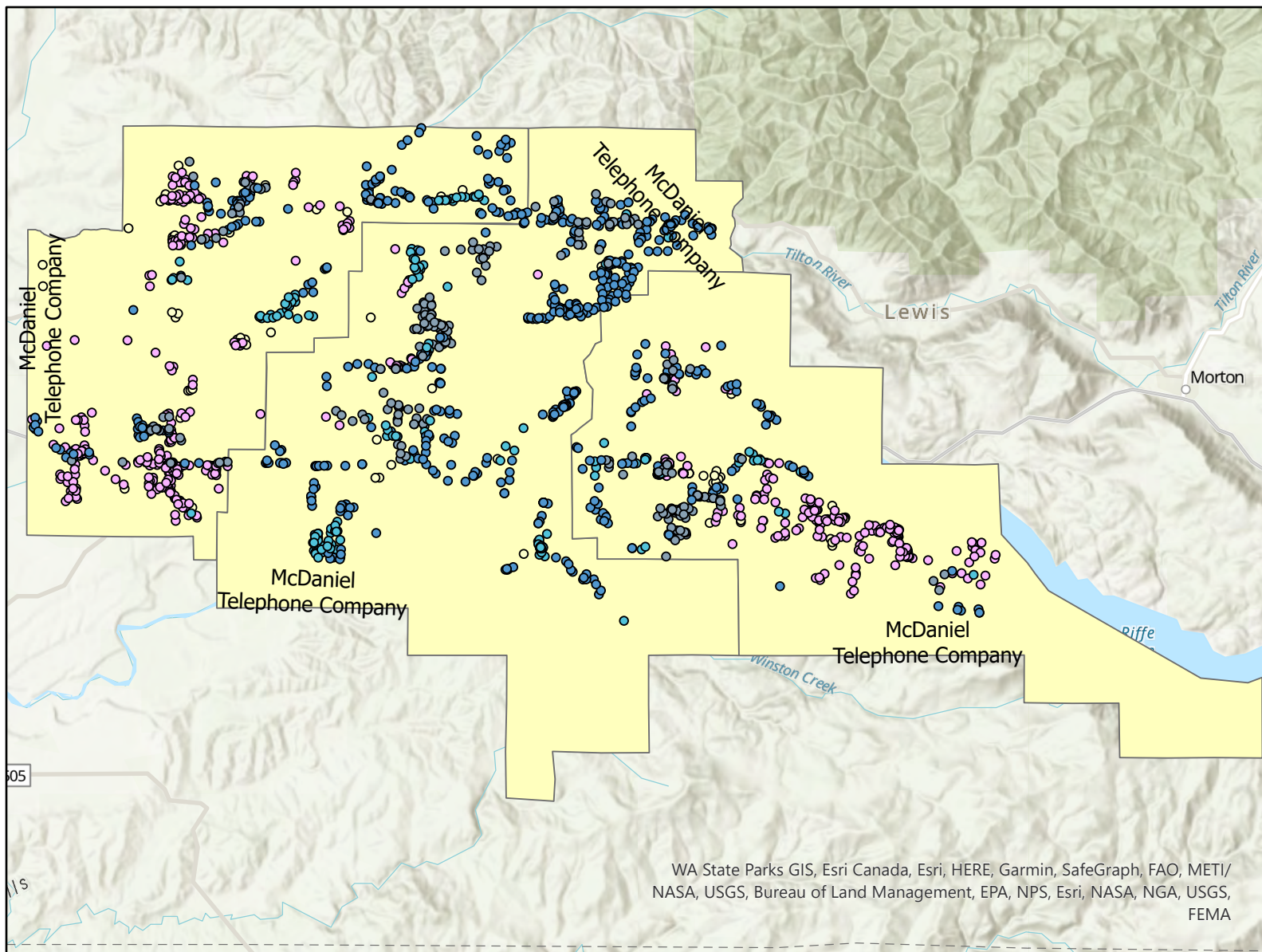


Lewis River has a SUSF UTC Broadband Buildout requirement of 264 locations by June 30, 2024. Lewis River has provided coordinates for 411 locations to where has deployed 25/3 Mbps (or faster) broadband speed capability during the 2021 fiscal year. This consist of 36 locations with 25/3 Mbps capability, 248 with 25/5 Mbps capability, and 127 with 100/25 Mbps capability.

As this is not a grant program, these locations are not explicitly funded with SUSF support, however, SUSF support helps make it possible for these companies to deploy broadband.

*Federal Universal Service Funds (FUSF) locations are a requirement of receiving federal high-cost support.

McDaniel's SUSF Supported Broadband Locations



McDaniel Deployed FY2021 TDS FUSF Locations*

Broadband Speed

- 25/3 Mbps
 - 25/5 Mbps
 - 10 Mbps and 1 Mbps
 - 100 Mbps and 25 Mbps
 - 25 Mbps and 3 Mbps
 - 25 Mbps and 5 Mbps
- McDaniel Study Area

McDaniel has a SUSF UTC Broadband Buildout requirement of 350 locations by June 30, 2024. McDaniel has provided coordinates for 577 locations where it has deployed 25/3 Mbps (or faster) broadband speed capability during the 2021 fiscal year. This consist of 74 locations with 25/3 Mbps capability and 503 locations with 25/5 Mbps capability.

As this is not a grant program, these locations are not explicitly funded with SUSF support, however, SUSF support helps make it possible for these companies to deploy broadband.

*Federal Universal Service Funds (FUSF) locations are a requirement of receiving federal high-cost support.